

patterns

december 2014

Bing Crosby Rediscovered

American Masters





Illinois Public Media™

WILL radio.tv.online

Membership Hotline: 800-898-1065

WILL AM-FM-TV: 217-333-7300

Campbell Hall for Public Telecommunication
300 N. Goodwin Ave., Urbana, IL 61801-2316

Mailing List Exchange

Donor records are proprietary and confidential.
WILL will not sell, rent or trade its donor lists.

Patterns

Friends of WILL Membership Magazine

Editor: Cyndi Pacey
Art Director: Michael Thomas
Designer: Laura Adams-Wiggs

Printed by Premier Print Group.



Printed with SOY INK
on RECYCLED,
RECYCLABLE paper.

Radio

90.9 FM: A mix of classical music and NPR information programs, including local news. (Also heard at 106.5 in Danville and with live streaming on will.illinois.edu.) See pages 4-5.

101.1 FM and 90.9 FM HD2: Locally produced music programs and classical music from C24. (101.1 is available in the Champaign-Urbana area.) See page 6.

580 AM: News and information, NPR, BBC, news, agriculture, talk shows. (Also heard on 90.9 FM HD3 with live streaming on will.illinois.edu.) See page 7.

Television

WILL Create

Cooking, travel, gardening and home improvement, arts and crafts. 12.3; also available on Comcast and Mediacom. See page 8.

WILL World

PBS documentaries, news and public affairs. 12.2; also available on Comcast and Mediacom. See page 8.

WILL-HD

All your favorite PBS and local programming, in high definition when available. 12.1; Contact your cable or satellite provider for channel information. See pages 9-16.

Online

will.illinois.edu



facebook.com/WILLradiotvonline



@willpublicmedia

Get WILL eNews

Video previews, behind-the-scenes information, program schedule updates and more, delivered every Wednesday to your email inbox.

go.illinois.edu/WILLsubscribe

patterns

december 2014 Volume XLII, Number 6



Gathering around shared experiences

July 20, 1969. With emotions ranging from awe to anxiety, we watched as something almost incomprehensible took place—the Apollo 11 landing on the moon, and Neil Armstrong's first steps onto the lunar surface.

I watched too, and even at my young age, I was fascinated with the power of television to deliver such an experience. That moment—shared by an estimated 500 million people around the world—may have planted the seed for my career in public media.

I still believe in what all of us gain when we connect around inspiring content from PBS, NPR and local member stations such as ours. This month, you'll find a mix of new specials and PBS core programs, including **Nature**, **NOVA**, **American Masters** and **Antiques Roadshow** featured during our WILL-TV pledge drive Dec. 1-14. Based on viewer feedback, PBS is making a commitment to including the shows you enjoy throughout the year in the pledge drive schedule. Among them is **NOVA: First Man on the Moon**, offering a first-time portrait of Neil Armstrong, a private Midwesterner made famous by the Apollo 11 mission. See page 2 for details.

Thank you for your support of programs on WILL-TV, WILL Radio and online at will.illinois.edu. If you'd like to renew your support or give an additional gift, we've included a gift envelope, or you can make your gift online at willpledge.org. Thank you also for believing in our mission as we continue building the future of Illinois Public Media.

Happy holidays and best wishes for 2015!

Moss Bresnahan, President and CEO
Twitter: @MossILMedia

A man for all seasons

Legendary crooner Bing Crosby may be best known for singing Irving Berlin's *White Christmas*, but his career of nearly 400 hit songs makes him the most recorded performer in history—an achievement unmatched by any other individual singer or group, including The Beatles, Elvis Presley or Frank Sinatra.

A brilliant entrepreneur, Crosby played an important role in the development of the postwar recording industry. As one of Hollywood's most popular actors, he won the Oscar for 1944's *Going My Way* and starred in the iconic "Road" films with Bob Hope.

Now a new **American Masters** documentary, *Bing Crosby Rediscovered*, offers fresh insight on Crosby when it premieres at 7 pm Tuesday, Dec. 2, on WILL-TV. Crosby's estate granted **American Masters** unprecedented access to the entertainer's personal and professional archives, including never-before-seen home movies, dictated recordings, photos and more.

The film features new interviews with all surviving members of Crosby's immediate family—wife Kathryn, daughter Mary and sons Harry and Nathaniel. It also reveals Crosby's struggles with his first wife, Dixie Lee, and their sons Gary, Dennis, Phillip and Lindsay. Mary addresses accusations of abuse first published in Gary's 1983 memoir, which tarnished their father's legacy. Gary speaks candidly about both his and his mother's alcoholism, as well as his difficulties with his father in a never-before-seen 1987 interview. Other new interviews include singers Tony Bennett and Michael Feinstein, record producer Ken Barnes, biographer Gary Giddins, and writers Buz Kohan and Larry Grossman, who share the story behind Crosby's Christmas special duet with David Bowie.

Bonus:

Complete list of Bing Crosby's top hits.

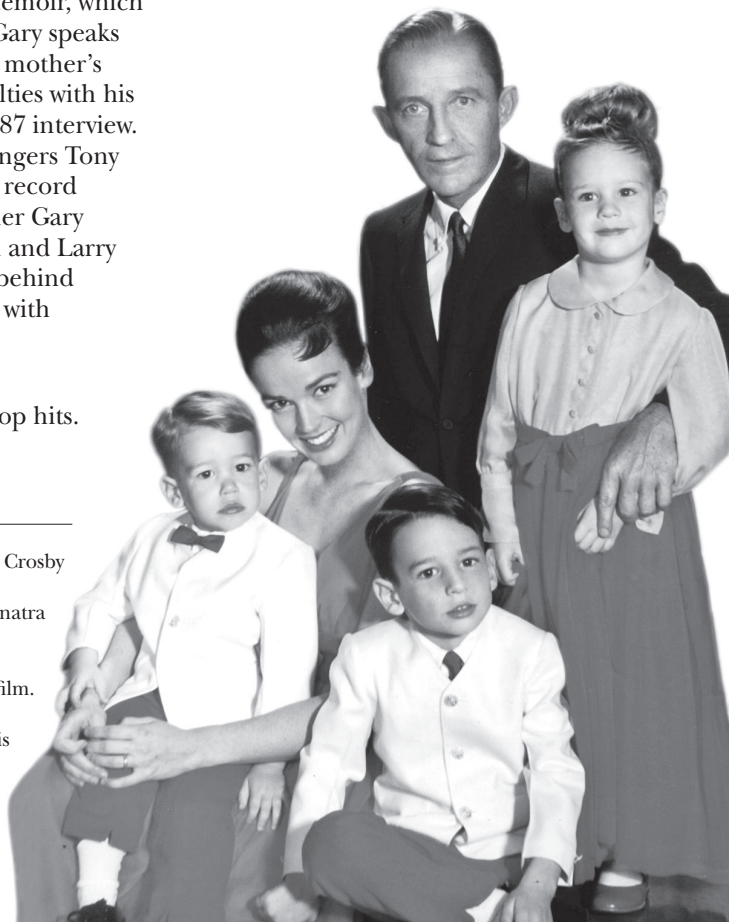
will.illinois.edu/patterns

Photos, top to bottom, all courtesy Bing Crosby Enterprises:

Bing Crosby collaborating with Frank Sinatra (left) and Judy Garland (right).

Frolicking with Bob Hope on a "Road" film.

Clockwise from top: Bing Crosby with his children Mary, Harry and Nathaniel, and second wife Kathryn, also on the cover.



WILL-TV pledge drive offers all-new specials



Photo: Courtesy of Warner Home

▲ Experiences that draw farm families together

Share warm winter memories of growing up on a farm with award-winning storyteller and author Jerry Apps. In this follow-up to his 2013 **Farm Story**, Apps shares his wit, wisdom and stories of family, neighbors and communities that worked together to survive the long winters that enveloped his rural boyhood home in central Wisconsin. **Farm Winter with Jerry Apps** airs at 7 pm Tuesday, Dec. 9.



Photo: Courtesy of Gail "Hal" Halvorsen

◀ The man known for taking one giant leap

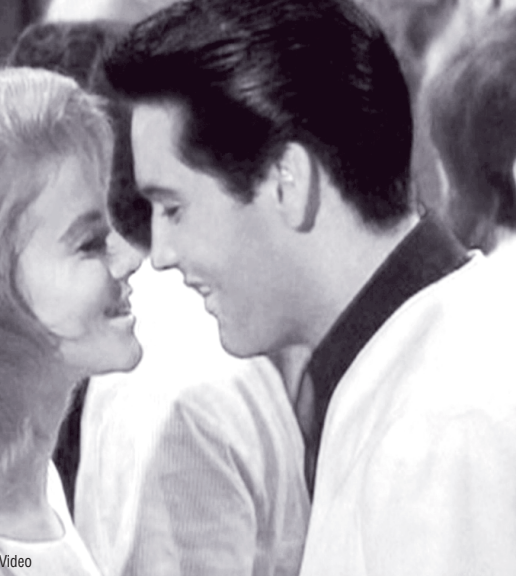
When Neil Armstrong set foot on the moon in 1969, he won instant fame. Yet this accomplished engineer and test pilot was so determined to stay out of the limelight that few know the personal story of how his rare combination of talent, luck and experience led to his successful command of Apollo 11. Through interviews with Armstrong's family and friends, **NOVA: First Man on the Moon** (8 pm Wednesday, Dec. 3) tells his story.

Video bonus: Watch the three-hour moon landing video from NASA. (Armstrong's famous words come at about the 3:30 mark.)

will.illinois.edu/patterns



Yes, we have more Pioneers! It's been a great season of Illinois Pioneers so far and we're not stopping yet.



◀ The inspiration of movie musicals

Take a journey across movie musicals' Golden Age, spanning from the Great Depression to the Civil Rights Movement, through in-depth looks at *The Wizard of Oz*, *Yankee Doodle Dandy*, *Singin' in the Rain*, *Seven Brides for Seven Brothers*, and *Viva Las Vegas*. Discover how these films overcame ballooning budgets, life-threatening injuries, inexperienced actors, dueling egos and a declaration of war to become among the most treasured movies in history. **Classic Hollywood Musicals** airs at 9 pm Tuesday, Dec. 2.



◀ One pilot's efforts to spread goodwill

Gail "Hal" Halvorsen was a C-54 pilot in the summer of 1948 when a Soviet blockade left the vanquished citizens of Berlin's Western zone without food and supplies. As two million people faced starvation, Halvorsen took part in the American-British-French operation that airlifted in food and coal. He took the goodwill gesture a step further as he dropped candy for the German children, telling them to watch for a plane that wiggled its wings. This touching story is told through first-hand stories from two of those Berlin children, now in their 70s, Halvorsen's friend and fellow airlift pilot, and Halvorsen himself. **The Candy Bomber** comes to WILL-TV at 8:30 pm Wednesday, Dec. 10.

Photo: Courtesy of ©Nick Briggs/Carnival Films 2014 for MASTERPIECE



◀ Free preview: **Downton Abbey Season 5**

Will Lady Mary choose Gillingham or Blake? Will Edith's secret be revealed? Will Tom Branson return to politics?

Join WILL at the historic Virginia Theatre, 203 W. Park Ave., in Champaign, from 7-9:30 pm Friday, Dec. 12, to watch the first hour of the two-hour Season 5 **Downton Abbey** premiere coming to WILL-TV in January. Gather a group of friends, put on your finest Downton attire and join the fun! Doors open at 6:30 pm. The theater's concession snacks and beverages will be for sale and a cash bar will be available. Get more event details and let us know you're coming at will.illinois.edu/downton. You may also call 217-333-7300 to register. Registrations close at noon Friday, Dec. 12.

If you're in the Bloomington area, another WILL preview with our sister station WTVP will take place at the Normal Theatre, 209 W. North St., in uptown Normal, from 7-9 pm Wednesday, Dec. 10. More details are at will.illinois.edu/downton.

Turn to page 17 to find out more about the next two installments in the WILL-TV production.

weekdays

6 am**NPR Morning Edition**

with Renee Montagne, Steve Inskeep and David Greene

9 am**Classic Mornings with Vic Di Geronimo**

Join Vic for music and companionship and make each morning a classic morning!

Noon**Afternoon Classics**

Jeff Esworthy, Julie Amacher, Lynn Warfel and Mindy Ratner keep you company throughout the afternoon. Garrison Keillor's **The Writer's Almanac** is at 1:01. **NPR News Headlines** at 3:01.

5 pm**NPR All Things Considered**

with Robert Siegel, Melissa Block and Audie Cornish

7 pm**The Evening Concert**

Great performances from the great concert venues. Also on Sundays from 7-9 pm. *Listings are subject to change.*

Monday:**The 2013 Deutsche Welle Festival Concerts (DWF)**

- 12/1 **"TENSIONS" in HEIMBACH**
Lars Vogt, piano; Heimbach Strings
Britten: Young Apollo, Op. 16
Dvorák: Dumky for Piano Trio, Op. 90
- 12/8 **MUSIC DAYS in HITZACKER**
Academy of Early Music Berlin
Mozart: "Eine kleine Nachtmusik"
Benda: Violin Concerto in A
- 12/15 **HOLIDAY SPECIALS:**
Hanukkah Lights 2014 and
Candles Burning Brightly
- 12/22 **HOLIDAY SPECIAL:**
And Glory Shone Around:
An Early American Christmas
with the Rose Ensemble
- 12/29 **DWF:** London Symphony Orchestra; Daniel Harding, conductor; Christian Tetzlaff, violin
Tchaikovsky: Violin Concerto
Mussorgsky: Night on Bald Mountain

Tuesday:**Chicago Symphony Orchestra (CSO)**

- 12/2 **Michael Tilson Thomas conducts Mahler 9**
Mahler: Symphony No. 9
Mahler: Blumine
- 12/9 **Bernard Labadie and Marc André Hamelin play Haydn and Beethoven**
Haydn: Piano Concerto in D major
Beethoven: Symphony No. 1 in C major
- 12/16 **Charles Dutoit and Mathieu Dufour**
Connesson: pour sortir au jour
Mathieu Dufour, flute [CSO commission]
Saint-Saens: Symphony No. 3 (Organ)
- 12/23 **HOLIDAY SPECIALS:**
Jonathan Winters' "A Christmas Carol" and
Festivo Alt.Latino with Coral Contigas
- 12/30 **CSO: William Walton's First Symphony**
Walton: Symphony No. 1

Wednesday:**Cleveland Orchestra**

- 12/3 Bramwell Tovey, conductor
Baba Skride, violin
Mendelssohn: Midsummer Night's Dream
Bruch: Violin Concerto No. 1
- 12/10 Jahja Ling, conductor
Yuja Wang, piano
Rachmaninoff: Symphonic Dances
Prokofiev: Piano Concerto No. 3
- 12/17 Franz Welser-Möst, conductor
Wagner: "Tannhäuser" Overture
Bruckner: Symphony No. 8
- 12/24 **HOLIDAY SPECIAL:**
A Festival of Nine Lessons and Carols
- 12/31 **HOLIDAY SPECIALS:**
Aspen Music Festival and
Toast of the Nation

Thursday:**The New York Philharmonic This Week**

- 12/4 Leonard Slatkin, conductor
Rouse: Flute Concerto (New York Premiere)
Ravel: Boléro
- 12/11 Alan Gilbert, conductor
Stravinsky: The Fairy's Kiss
Stravinsky: Petrushka
- 12/18 Alan Gilbert, conductor
Turnage: Frieze
Beethoven: Symphony No. 9
- 12/25 **HOLIDAY SPECIALS:**
Messiah from Washington National Cathedral
and A Baroque Christmas from the New World

Friday:**Prairie Performances and Holiday Specials**

Concerts are subject to availability.

- 12/5 **Millikin-Decatur Symphony** (10/25/14)
Michael Luxner, conductor
Mozart: Overture to Don Giovanni
Beethoven: Piano Concerto No. 5 in E-Flat ("Emperor")
Silvan Negrutiu, piano
Dvorak: Symphony No. 9 in E Minor ("From the New World")
- 12/12 **Champaign-Urbana Symphony Voyages** (10/25/14)
Stephen Alltop, conductor
Mendelssohn: Hebrides Overture, Op. 26
Corigliano: Voyage for Flute and Strings
Mary Leathers Chapman, flute
Williams: Escapades for Alto Saxophone and Orchestra from the film score *Catch Me if You Can*
Debra Richtmeyer, saxophone
Rimsky-Korsakov: Scheherazade, Op. 35
- 12/19 **HOLIDAY SPECIALS:**
An Afro-Blue Christmas and
Jazz Piano Christmas XXX
- 12/26 **HOLIDAY SPECIALS:**
Christmas With Morehouse and Spelman Glee Clubs and A Season's Griot 2014

9 pm**Night Music**

Gillian Martin, Bob Christiansen, Ward Jacobson, Scott Blankenship or John Zech keep you company through the night and into the morning. **NPR News Headlines** at 9:01.

saturdays

7 am

NPR Weekend Edition

with Scott Simon

9 am

Classics By Request

Submit requests to John Frayne at clasreq@illinois.edu or 217-300-4319.

Garrison Keillor's **The Writer's Almanac** at 9:01.

NPR News Headlines at 10:01.

11 am

Classics of the Phonograph

John Frayne's weekly exploration of memorable recordings from the 20th century. **Note: 10 am start.*

12/6 Famous Recordings of Beethoven's Violin Concerto

12/13 *Historic Recordings of Handel's "Messiah"

12/20 Famous Holiday Recordings

12/27 Stravinsky Conducts Stravinsky

Noon

Afternoon at the Opera

The live Met Season begins this month.

**Note: 11 am start.*

12/6 **THE BARBER OF SEVILLE** (Rossini). Michele Mariotti, cond, with Isabel Leonard (Rosina), Lawrence Brownlee (Almaviva), Christopher Maltman (Figaro), and the Met Opera Chorus and Orchestra.

12/13 ***DIE MEISTERSINGER VON NÜRNBERG** (Wagner). James Levine, cond, with Michael Voile (Sachs), Johan Botha (Walter), Anette Dasch (Eva), and the Met Opera Chorus and Orchestra.

12/20 **THE MARRIAGE OF FIGARO** (Mozart). Edo de Waart, cond, with Erwin Schrott (Figaro), Danielle de Niese (Susanna), Rachel Willis-Sorensen (Countess), Mariusz Kwiecien (Count), Serena Malfi (Cherubino), and the Met Opera Chorus and Orchestra.

12/27 **LA TRAVIATA** (Verdi). Marco Armiliato, cond, with Marina Rebeka (Violetta), Stephen Costello (Alfredo), Ludovic Tézier (Germont), and the Met Opera Chorus and Orchestra.

4 pm

NPR All Things Considered

5 pm

A Prairie Home Companion

Garrison Keillor and friends present music, skits, and the latest news from Lake Wobegon. **[Also Sundays at 2 pm]**

7 pm

The Midnight Special

Rich Warren presents folk music and farce, show tunes and satire, traditional and contemporary with gentle irreverence and candid observation.

9 pm

Classics All Night

Bob Christiansen and Scott Blankenship keep you company Saturday night and into Sunday morning. **NPR News Headlines** at 10:01.

sundays

7 am

NPR Weekend Edition

with Rachel Martin

9 am

Sunday Baroque

With host Suzanne Bona

Garrison Keillor's **The Writer's Almanac** at 9:01.

1 pm

The Record Shelf

Host Jim Svejda presents the best classical CDs and discusses the lives of some of the most famous composers and performers of classical music.

2 pm

A Prairie Home Companion

Garrison Keillor and friends present music, skits and the latest news from Lake Wobegon.

4 pm

NPR All Things Considered

5 pm

Classical Music

Mindy Ratner and Valerie Kahler are your hosts.

7-8 pm

The Evening Concert

Chamber Music Society of Lincoln Center and a Holiday Special

12/7 Poulenc: Trio for Oboe, Bassoon & Piano
Stephen Taylor, oboe

12/14 Mozart: Sonata for Piano, Four Hands, K. 521.
Juho Pohjonen, Wu Han, piano duet

12/21 **HOLIDAY SPECIAL: A Paul Winter Solstice Concert (Hour 1)**

12/28 Ravel: Quartet in F Major
Parisii Quartet

8-9 pm

The Evening Concert

The Spoleto Chamber Music Festival and a Holiday Special

12/7 Chausson: Piano Trio in G Minor, Op. 3
Pavel Kaleskinov, piano

12/14 Vivaldi: Chamber Concerto for Flute, Oboe,
Bassoon, and Violin in G Minor, RV 107

12/21 **HOLIDAY SPECIAL: A Paul Winter Solstice Concert (Hour 2)**

12/28 Ginastera: Duo for Flute and Oboe, Op. 13
Tara Helen O' Connor, flute

10 pm

Harmonia

Angela Mariani presents Baroque and early music. **NPR News Headlines** at 10:01.

11 pm

The Romantic Hours

Music, poetry and romance with Mona Golabek.

midnight

Classical Music

willfm
101.1 and 90.9 HD2

weekdays

6-9 am

Classical Music

9 am-noon

**Classic Mornings
with Vic Di Geronimo**

Join Vic for music and companionship and make each morning a classic morning!

Noon-overnight

Classical Music;

Fridays 7-9,

Prairie Performances

(see listings page 4)

Saturdays

7-9 am

Classical Music

9-11 am

Classics by Request

John Frayne plays requests at this time each Saturday. Submit requests at classreq@illinois.edu or 217-300-4319.

11 am-Noon

Classics of the

Phonograph

John Frayne's weekly exploration of memorable recordings from the 20th century. See page 5 for listings.

Noon-overnight

Classical Music

Sundays

all day

Classical Music



Programs on WILL Radio are partially sponsored by a grant from the Illinois Arts Council, a state agency.

New programs combine with holiday specials



WILL-AM

Following up on the popularity of Ken Burns' September 2014 PBS documentary series about the Roosevelts, an hour-long special from American RadioWorks features historic radio broadcasts from Eleanor and FDR. The rarely heard archival audio in the **First Family of Radio: Franklin and Eleanor Roosevelt's Historic Broadcasts**, as well as oral histories and contempo-

rary interviews, explores how the Roosevelts revolutionized political communication in America. The program comes to WILL-AM at 10 am Friday, Dec. 5.

At 10 am Friday, Dec. 12, **Breaking Ground—Military Children** covers how nearly two million U.S. children are affected by having at least one parent deployed to a war zone.

Innovation Hub (10 am Friday, Dec. 19, WILL-AM) looks at how innovations are reshaping our holidays by altering approaches to travel, family gatherings, food and more. Then at 10 am Dec. 26, **Innovation Hub's New Year's Special** looks at the research, industries, gadgets and more that will change our world.

Other WILL-AM specials include:

- **All Songs Considered for the Holidays**, 1-2 pm Sunday, Dec. 20
- **St. Olaf Christmas Festival**, 7-9 pm Wednesday, Dec. 24
- **Tinsel Tales 3**, 10-11 am Thursday, Dec. 25
- **A Christmas Carol**, reading of Dickens' story by the late U of I professor Paul Landis, 2-3 pm Thursday, Dec. 25

WILL-FM

Hanukkah Lights 2014 features new stories from acclaimed authors Debra Ginsberg, Anne Burt, Lesley Hyatt, Andrew Borowitz and Theodore Bikel at 7 pm Monday, Dec. 15.

Airing on WILL Radio for the first time is **An Afro-Blue Christmas** at 7 pm Friday, Dec. 19. The concert features Howard University's premier vocal ensemble and special guest pianist Cyrus Chestnut. It's followed by NPR's **Jazz Piano Christmas XXX**, the annual concert from the John F. Kennedy Center for the Performing Arts.

Then at 7 pm Thursday, Dec. 25, the **Messiah from Washington National Cathedral** is followed by **A Baroque Christmas in the New World**. This special, on WILL Radio for the first time, offers music from 17th- and 18th-century Mexico, Peru and Bolivia, including three free-standing works by Sumaya.

See the FM listings on pages 4-5 for the schedule of all holiday programs.

Monday - Friday		Saturday	Sunday
NPR Morning Edition with Jeff Bossert	5:00	BBC Overnight Continued	BBC World Service
	6:00	Commodity Week	Inside Europe
	6:30	Mid-American Gardener	
	7:00	NPR Weekend Edition	NPR Weekend Edition
	9:00	Car Talk	
See below	10:00	Wait Wait ... Don't Tell Me	Says You
Fresh Air NPR News 11:01	11:00	Ask Me Another	Car Talk
Here & Now hosted by Jason Croft NPR News 12:01	Noon	This American Life	Wait, Wait... Don't Tell Me
Science Friday (F)	1:00	The Moth Radio Hour	All Songs Considered/All Songs Considered for the Holidays (12/20)
	1:30		State Week in Review/All Songs Considered for the Holidays (12/20)
The Closing Market Report NPR News 2:01/ A Christmas Carol (12/25)	2:00	Radiolab	The Tavis Smiley Show
BBC Business Daily/ Commodity Week (F)/ A Christmas Carol (12/25)	2:30		
The World	3:00	TED Radio Hour	On the Media
All Things Considered with Jim Meadows	4:00	All Things Considered	All Things Considered
	5:00	Big Picture Science	The People's Pharmacy
	6:00	Commonwealth Club	Travel with Rick Steves
Fresh Air/St. Olaf Christmas Special (12/24)	7:00	Living on Earth	To the Best of Our Knowledge
See below (repeat of 10 am program/St. Olaf Christmas Special (12/24))	8:00	Latino USA	
BBC World Service	9:00	Alternative Radio	New Dimensions
	10:00	Bookworm	Le Show
	10:30	New Letters on the Air	
	11:00	Left, Right & Center	BBC World Service
	11:30- 6 am	BBC World Service	

10 am weekdays lineup

Monday: On the Media (repeat of previous Sunday)
 Tuesday: The Moth Radio Hour
 Wednesday: Big Picture Science (repeat of previous Saturday)
 Thursday: The TED Radio Hour (repeat of previous Saturday)/Tinsel Tales 3 (12/25)

Bold Listing = National/International News

Friday: The First Family of Radio: Franklin and Eleanor Roosevelt's Historic Broadcasts (12/5); Breaking Ground—Military Children (12/12); Innovation Hub: Unwrapping the Future (12/19); Innovation Hub: New Year's Special (12/26)

Agriculture

Dave Dickey, agriculture director;
Todd Gleason, host, Closing Market Report & Commodity Week

Opening Market Report: 8:49 am; **Mid-Morning Market Report:** 9:49 am; **Market Update:** 10:58 and 11:58 am; **Midday Market Report:** 12:55 pm; **Closing Market Report:** 2:06 pm. To listen to archived ag reports, sign up for the Illinois Public Media Ag E-newsletter, or download our agricultural podcasts, visit www.willag.org. Call 217-333-3434 for market analysis, updated at 9:15 am and 3:15 pm daily.

Illinois Public Media News

Scott Cameron, news and public affairs director

The news from Illinois Public Media's award-winning staff of reporters—Jim Meadows, Hannah Meisel and Jeff Bossert—can be heard during **Morning Edition**, **Here & Now** and **All Things Considered**.

Weather

Monday-Friday

AM: 6:09, 6:20, 6:35, 6:50, 7:09, 7:20, 7:35, 7:50, 8:09, 8:20, 8:35, 8:50 **PM:** 12:37, 4:06, 4:35, 5:06, 5:35

Saturday and Sunday

Occasional updates

Arts and Crafts—6-7 am; noon-1 pm

Sun and Wed: It's Sew Easy; Beauty of Oil Painting with Gary Jenkins

Mon and Fri: Lap Quilting with Georgia Bonesteel; Paint This with Jerry Yarnell

Tue and Thu: Knit and Crochet Now; Best of the Joy of Painting

Cooking—7-9 am; 1-3 pm

Sun and Wed: Hubert Keller: Secrets of a Chef/French Chef Classics (begins 12/31); Neven Maguire: Home Chef; Pati's Mexican Table; Eat! Drink! Italy! with Vic Rallo

Mon and Fri: New Scandinavian Cooking; P. Allen Smith's Garden to Table; Ciao Italia; Joanne Weir's Cooking Class/Joanne Weir's Cooking Confidence (begins 12/29)

Tue and Thur: Chef John Besh's New Orleans/Chef John Besh's Family Table (begins 12/9); George Hirsch Lifestyles; Healthy Indian Flavors/Jazzy Vegetarian (begins 12/11); Clodagh's Irish Food Trails/Joy of Kosher with Jamie Geller: Hanukkah Special (12/16 & 12/18)/Chef's Life (begins 12/23)

Travel—9-10 am; 3-4:30 pm

Sun and Wed: Journeys in India/Islands Without Cars (begins 12/10); Journeys in Africa/Travel with Kids (begins 12/10)

Mon and Fri: Travel Specials

Tue and Thu: Smart Travels—Europe with Rudy Maxa; In the Americas with David Yetman

Gardening/Home Improvement—10-noon; 4:30-6:30 pm

Mon and Fri: This Old House; Rough Cut—Woodworking with Tommy Mac; P. Allen Smith's Garden Home; Vintage/Winemakers (begins 12/5)

Tue and Thu: Hometime; Woodsmith Shop; Victory Garden; For Your Home

Wed: Ask This Old House; American Woodshop; Garden Smart; Katie Brown Workshop

Sun: Ask This Old House; American Woodshop; Growing a Greener World; Katie Brown Workshop

Saturday Marathons—5-11 am; 5-11 pm**Dec 6/7: Gift Giving**

Add extra detail to homemade gifts.

Dec 13/14: Globe Trekker: Around the World
Start in the U.S. and see the world.

Dec 20/21: Joy to the World
Chefs and lifestyle experts help you celebrate the holidays.

Dec 27/28: Midnight Celebrations
Get everything you need to ring in 2015.

See the full Create schedule at will.illinois.edu/tv/schedule

WORLD Primetime Schedule

12.2

Monday-Friday

9:00 PBS NewsHour

10:00 Nightly Business Report

10:30 Journal

Mondays

7:00 Jews & Christians: A Journey of Faith (12/8); Three Faiths, One God (12/15); Mysteries of the Jesus Prayer (12/29)

8:00 Local USA

8:30 Film School Shorts

11:00 POV (12/1); Jews & Christians: A Journey of Faith (12/8); Three Faiths, One God (12/15); Asian and Abrahamic Religions: A Divine Encounter in America (12/22); Beyond Theology: What Would Jesus Do? (12/29)

11:30 Independent Lens (12/1)

Tuesdays

7:00 America Reframed

8:00 The Story of Adventist Education (12/23)

8:30 New Metropolis (12/2); Seaside Story (12/9); Serving America: Memories of Peace Corps (12/16); Living Courageously: The Spirit of Women (12/30)

11:00 America Reframed

Wednesdays

7:00 Independent Lens (12/10); Cafeteria Man (12/17); Frontline (12/24, 12/31)

8:00 POV (12/3); Frontline

11:00 Crisis of Faith (12/3); Independent Lens (12/10); Cafeteria Man (12/17); Frontline (12/24, 12/31)

Thursdays

7:00 Global Health Frontiers: Foul Water, Fiery Serpent (12/4); Nazi Mega Weapons (12/11); NOVA (12/18, 12/25)

8:00 America by the Numbers with Maria Hinojosa

8:30 America by the Numbers with Maria Hinojosa

11:00 Global Health Frontiers: Dark Forest, Black Fly (12/4); NOVA

Fridays

7:00 Life of Muhammad (12/5); Sacred Journeys with Bruce Feiler (12/19, 12/26)

8:00 Life of Muhammad (12/5); In My Lifetime (12/12); Martin Luther (12/19, 12/26)

11:00 Life of Muhammad (12/5); Rickover: The Birth of Nuclear Power (12/12); Sacred Journeys with Bruce Feiler (12/19, 12/26)

Saturdays

7:00 Washington Week

7:30 McLaughlin Group

8:00 Charlie Rose: The Week

8:30 European Journal

9:00 Buddha (12/6); American Experience: The Amish (12/13); American Experience: The Amish Shunned (12/20); Jerusalem: Center of the World (12/27)

11:00 Moyers & Company

11:30 Asia This Week

Sundays

7:00 Sky Island (12/7); Nature

7:30 Katmai: Alaska's Wild Peninsula (12/7)

8:00 Finding Your Roots (12/7); The Story of the Jews with Simon Schama

9:00 Global Voices

10:00 Little League: A History (12/14); Fire in the Forest: The Life and Legacy of the Ba'al Shem Tov (12/21)

10:30 Emery Blagdon and His Healing Machine (12/7); In the Wild: Edison, Ford & Friends (12/28)

11:00 Sky Island (12/7); Nature

11:30 Katmai: Alaska's Wild Peninsula (12/7)

See the full World schedule at will.illinois.edu/tv/schedule

Monday - Friday		Saturday	Sunday	
Market to Market (M) Nightly Business Report (T-F)	5:00	Barney & Friends	Sid the Science Kid	
Body Electric (M,W,F) Sit and Be Fit (T, Th)	5:30	Angelina Ballerina	Peg + Cat	
Odd Squad	6:00	Curious George	Curious George	
Wild Kratts	6:30	Curious George	Curious George	
Curious George	7:00	Daniel Tiger	Daniel Tiger	
Curious George	7:30	Daniel Tiger	Daniel Tiger	
Daniel Tiger's Neighborhood	8:00	Sesame Street	Sesame Street	
Daniel Tiger's Neighborhood	8:30	Dinosaur Train	Dinosaur Train	
Sesame Street/Elmo's Christmas Countdown (12/22-12/25)	9:00	Thomas and Friends	Cyberchase	
	9:30	Bob the Builder	Space Racers	
Dinosaur Train	10:00	Motorweek	Charlie Rose: The Week	
Dinosaur Train	10:30	Growing a Greener World	Moyers & Company	
Peg + Cat	11:00	Mid-American Gardener	America's Heartland	
Peg + Cat	11:30	Victory Garden	Market to Market	
Super WHY!	Noon	America's Test Kitchen	The McLaughlin Group	
Thomas & Friends	12:30	Cook's Country	Religion + Ethics Newsweekly	
Sewing Programs ▼	1:00	Lidia's Kitchen	Specials 12/7 1:00, 50 Years with Peter, Paul and Mary 3:00, 1965-1967 Rock Rewind 4:30, Victor Borge's Timeless Comedy 5:00, Doc Martin Behind the Scenes 6:00, Being Poirot 12/14 1:00, Jackie Evancho—Awakening: Live in Concert 2:30, Christmas with the Mormon Tabernacle Choir 4:00, Victor Borge's Timeless Comedy 5:30, Downton Abbey Rediscovered 12/21 1:00, Downton Abbey Seas. 4, P1 3:00, Downton Abbey Seas. 4, P2 4:00, Downton Abbey Seas. 4, P3 12/28 1:00, Downton Abbey Seas. 4, P4 2:00, Downton Abbey Seas. 4, P5 3:00, Downton Abbey Seas. 4, P6 4:00, Downton Abbey Seas. 4, P7	
Painting and How To Programs ▼	1:30	Simply Ming		
Sesame Street/ Curious George (12/17)	2:00	Martha Stewart's Cooking School		
Curious George	2:30	Martha Bakes		
Arthur	3:00	Mind of a Chef		
Odd Squad	3:30	Hometime		
Wild Kratts	4:00	This Old House Hour		
Wild Kratts	4:30			
BBC World News	5:00	PBS NewsHour Weekend		PBS NewsHour Weekend
Nightly Business Report	5:30	Rick Steves' Europe		America by the Numbers with Maria Hinojosa
PBS NewsHour	6:00	Lawrence Welk	Doc Martin	

Daytime schedules will vary during the WILL-TV pledge drive Dec. 1-14. Please see listings.

1:00 pm Sewing

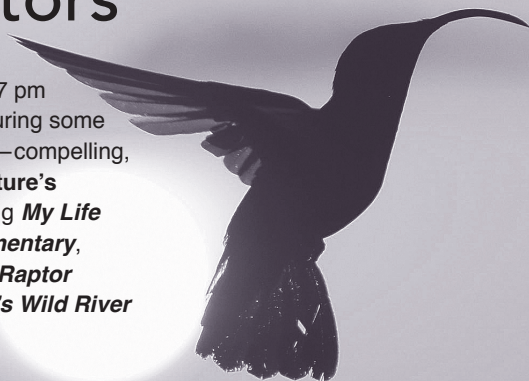
M: Fons & Porter's Love of Quilting
 Tu: Sewing with Nancy
 W: Knitting Daily
 Th: Fit 2 Stitch
 F: Quilting Arts

1:30 pm Painting and How To

M: Rough Cut
 Tu: Paint This with Jerry Yarnell
 W: Woodsmith Shop
 Th: Garden Smart
 F: Woodwright's Shop

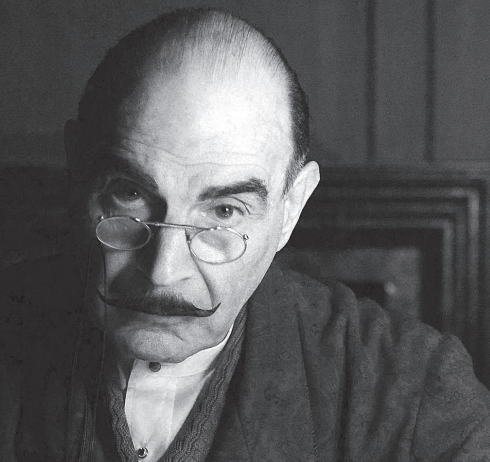
All kinds of natural aviators

Don't miss **Nature: Best of Birds** (7 pm Wednesday, Dec. 3), a special featuring some of the most memorable bird stories—compelling, emotional and humorous—from **Nature's** award-winning productions, including *My Life as a Turkey*, *An Original DUCKumentary*, *Hummingbirds: Magic in the Air*, *Raptor Force*, *Birds of the Gods*, *Ireland's Wild River* and many others.



Challenging Poirot's little grey cells

Confined to a wheelchair and crippled with arthritis, the now elderly Hercule Poirot is reunited with his old friend Captain Hastings at Styles, the large country house where they met 30 years ago and solved their first murder investigation together. As Poirot's health deteriorates and their fellow guests begin to fall victim to confounding attacks, the great detective must summon the last of his strength to battle his ultimate nemesis. **Curtain: Poirot's Last Case** airs at 8 pm Sunday, Dec. 7.



The music of change

50 Years with Peter, Paul and Mary (8:30 pm Monday, Dec. 1) celebrates this trio's impact in bringing folk music to America's mass audiences while combining artistry, activism and inspiration. It features powerful, moving

performances starting with the group's emergence in Greenwich Village and continuing through the Civil Rights and anti-war eras, showing how the music that became the soundtrack of social and political change still resonates today.

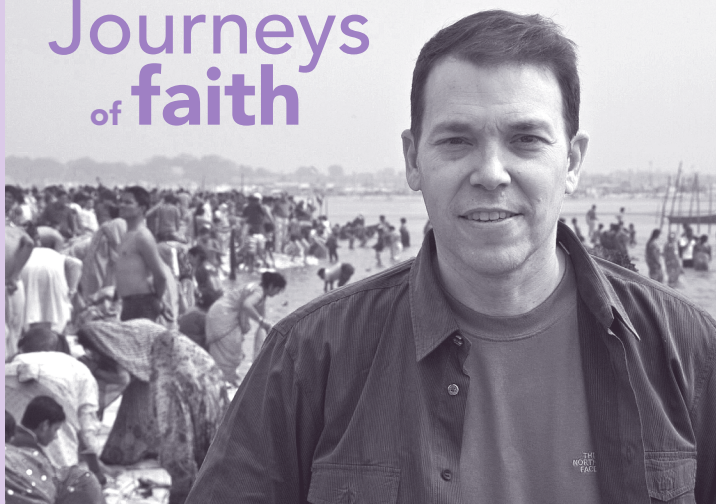
Going on the rails



Come along with historian Julian Davidson as he travels from Norway to the Italian Adriatic coast, sampling the delights of some of the most dramatic and fascinating railway journeys in Europe. In addition to the breathtaking scenery, Davison provides insight into culture and history in **Great Railway Journeys of Europe** at 7 pm Wednesday, Dec. 10.

Join *New York Times* best-selling author Bruce Feiler (right) on a journey to six of the world's most rigorous religious pilgrimages, all undertaken in one remarkable year. The six-part **Sacred Journeys with Bruce Feiler** opens a window into the human quest for meaning while also including world history and personal stories of faith exploration. The first two episodes air at 7 pm and 8 pm Tuesday, Dec. 16, followed by more installments on Dec. 23 and 30. See listings for individual program descriptions.

Journeys of faith



The party is at Joshua's!

In celebration of the release of his 2013 album, *Musical Gifts*, world-renowned violinist Joshua Bell welcomed cameras into his home for a rare and intimate concert. The result is **Joshua Bell Presents Musical Gifts** (9 pm Wednesday, Dec. 24), a salon-style performance of holiday standards featuring Renee Fleming, Michael Feinstein, the Young People's Chorus of New York and others.



WILL-TV

Friday Night Public Affairs

- 7:00 Washington Week
- 7:30 Charlie Rose: The Week

BritCom Saturday Night

- 8:00 As Time Goes By
- 8:30 Moone Boy
- 9:00 To the Manor Born
- 9:30 After You've Gone
- 10:00 Red Green Show
- 10:30 Doctor Who

On pledge drive days with this symbol, program start and end times may vary.

1 Monday

- 1:00 **Aging Backwards with Miranda Esmonde-White**
- 7:00 **Antiques Roadshow** (TV-G)
Junk in the Trunk 4. Part 1 of 2. New appraisals from all eight cities of the 2014 season. Highlights include a Steiff Pushmi-Pullyu Doctor Dolittle character; a Pablo Picasso linocut; and a pair of Italian carved door panels. *Repeated 2 am Friday; 11:30 am Saturday; and 3 am Sunday.*
- 8:30 **50 Years with Peter, Paul and Mary** (TV-G)
See article page 10. *Repeated midnight Tuesday; and 1 pm Sunday.*
- 10:30 **Newsline**
- 11:00 **Charlie Rose**

2 Tuesday

- 1:00 **Sewing with Nancy 30th Anniversary Special**
- 7:00 **American Masters** (TV-G)
Bing Crosby Rediscovered. See article page 1. *Repeated midnight Wednesday; 1 pm Saturday; 8 pm 12/26; 1 am 12/27; and 2:30 am 12/29.*
- 9:00 **Classic Hollywood: Musicals**
See article page 3. *Repeated 3 pm Saturday.*
- 10:30 **Newsline**
- 11:00 **Charlie Rose**

3 Wednesday

- 1:00 **Painting the Wyland Way 2: Sea Turtle Rising**
- 7:00 **Nature**
Best of Birds. See article page 10.
- 8:00 **NOVA** (TV-G)
First Man on the Moon. See article page 2. *Repeated midnight Thursday; 4 am Friday; 2 am Saturday; and 3 am Monday.*
- 9:30 **Downton Abbey Rediscovered** (TV-G)
A look back at the first four seasons through cast interviews, video clips and behind-the-scenes footage, plus a preview of season 5. *Repeated 1:30 am Friday; 9 pm Monday; 2:30 am 11:30 am 12/13; 5:30 pm 12/14; 3:30 am 12/15; 1 am 12/19; 4:30 am 12/23; 4:30 am 12/24; 4 am 12/29; and 4:30 am 12/30.*
- 11:00 **Charlie Rose**

4 Thursday

- 1:00 **Joel Harper's Firming After 50**
- 7:00 **Mid-American Gardener** (TV-G)
- 8:00 **Doc Martin** (TV-PG)
On The Edge. Part 1 of 2. Martin fails to restart his relationship with Louisa; meanwhile, her father arrives in Portwenn with a criminal scheme that affects Martin and Louisa.
- 9:00 **Doc Martin: Behind The Scenes**
Get an inside look at the early episodes of the popular show. *Repeated 5 pm Sunday.*
- 10:00 **Last of the Summer Wine**
- 10:30 **Newsline**
- 11:00 **Charlie Rose**

5 Friday

- 1:00 **Easy Yoga for Easing Pain**
- 7:00 **Tribute to Bruce Springsteen** (TV-G)
Recorded at the 2013 MusiCare's Man of the Year benefit, this concert features some of music's biggest stars—including Alabama Shakes, John Legend, Patti Smith, the Zac Brown Band and Mavis Staples—performing Springsteen's hits. *Repeated 9:30 pm Saturday; and midnight Sunday.*
- 10:00 **Illinois Lawmakers**
- 10:30 **Newsline**
- 11:00 **Charlie Rose**

6 Saturday

- am
- 10:00 **Great Railway Journeys of Europe**
- 11:30 **Antiques Roadshow**
Junk in the Trunk 4. Part 1 of 2.
- pm
- 1:00 **American Masters: Bing Crosby Rediscovered**
- 3:00 **Classic Hollywood Musicals**
- 4:30 **Great Moments and Memories: The Lawrence Welk Holiday Special**
- 7:00 **Renee Fleming – Christmas in New York**
- 8:00 **Last of the Summer Wine** (TV-G)
Last Post and Pigeon. In this last episode with Compo, he's selected travel to France with a group of local WWII veterans. *Repeated 9:30 pm Wednesday.*
- 9:30 **Tribute to Bruce Springsteen** (TV-G)
Repeated from 7 pm Friday.

7 Sunday

- 1:00 **50 Years with Peter, Paul and Mary**
- 3:00 **1965-1967 Rock Rewind (My Music)**
- 4:30 **Victor Borge's Timeless Comedy**
- 5:00 **Doc Martin: Behind the Scenes**
- 6:00 **Being Poirot**
After 25 years of playing Hercule Poirot, David Suchet looks into the mysterious appeal of the great detective. *Repeated 1 pm Saturday.*
- 8:00 **Agatha Christie's Poirot** (TV-PG)
Curtain: Poirot's Last Case. See article page 10. *Repeated 10 pm; midnight Monday; and 3 pm Saturday.*
- 10:00 **Agatha Christie's Poirot** (TV-PG)
Curtain: Poirot's Last Case. *Repeated from 8 pm.*

8 Monday

- 7:00 Suze Orman's Financial Solutions for You (TV-G)**
This newest special focuses on helping individuals get a critical understanding of how money is tied to their unique emotional needs, then applying those "goals of money" to personal financial decision-making.
- 9:00 Downton Abbey Rediscovered (TV-G)**
Repeated from 9:30 pm Wednesday.
- 10:30 Newsline**
- 11:00 Charlie Rose**

9 Tuesday

- 7:00 Farm Winter with Jerry Apps (TV-G)**
See article page 2.
- 8:30 Christmas with the Mormon Tabernacle Choir featuring Alfie Boe and Tom Brokaw**
- 10:00 Last of the Summer Wine**
- 10:30 Newsline**
- 11:00 Charlie Rose**

10 Wednesday

- 7:00 Great Railway Journeys of Europe (TV-G)**
See article page 11.
- 8:30 The Candy Bomber**
See article page 3.
- 9:30 Last of the Summer Wine (TV-G)**
Last Post and Pigeon. Repeated from 8:30 pm Saturday.
- 11:00 Charlie Rose**

11 Thursday

- 7:00 Mid-American Gardener (TV-G)**
- 7:30 Illinois Pioneers**
Jeff Perkins. See article page 17.
- 8:00 Doc Martin (TV-PG)**
On The Edge. Part 2 of 2. Martin fails to restart his relationship with Louisa; meanwhile, her father arrives in Portwenn with a criminal scheme that affects Martin and Louisa.
- 9:00 Father Brown (TV-PG)**
The Prize of Colonel Gerard. Ex-colonel Gerard is poisoned after arguing with his nephew, Edward, a former Korean War POW.
- 10:00 Last of the Summer Wine**
- 10:30 Newsline**
- 11:00 Charlie Rose**

12 Friday

- 7:00 Friday Night Public Affairs**
See page 12.
- 8:00 Live from Lincoln Center (TV-G)**
Curtain Up: The School of American Ballet Workshop. For the first time, an inside look at one of the world's premier ballet academies, plus the school's 50th annual performance from June 2014, featuring an all-Balachine program. *Repeated 1 am Saturday; and 2 am Monday.*
- 9:30 Victor Borge's Timeless Comedy (TV-G)**
A retrospective of Borge's comedy and music selected from global archives, featuring recently rediscovered material from *The Tonight Show*, *The Hollywood Palace* and other variety programs. *Repeated 4 pm Sunday.*
- 10:00 Last of the Summer Wine**

- 10:30 Newsline**
- 11:00 Charlie Rose**

13 Saturday

- am
- 10:00 Farm Story with Jerry Apps**
- 11:30 Downton Abbey Rediscovered**
- pm
- 1:00 Being Poirot**
- 3:00 Agatha Christie's Poirot**
Curtain: Poirot's Last Case
- 5:00 Renee Fleming – Christmas in New York**
- 6:00 Big Band Years**
- 8:00 Viewer Favorite from the Fund Drive**

14 Sunday

- 1:00 Jackie Evancho – Awakening: Live in Concert**
- 2:30 Christmas with the Mormon Tabernacle Choir**
- 4:00 Victor Borge's Timeless Comedy**
- 5:30 Downton Abbey Rediscovered**
- 7:00 Masterpiece Classic (TV-PG) (DVS)**
Downton Abbey Season 4. Part 1 of 8. Six months after Matthew's death, family and servants try to cure Mary and Isobel of their deep depression. Meanwhile, O'Brien causes a final crisis. *Repeated 1 pm 12/21.*
- 9:00 Masterpiece Classic (TV-14) (DVS)**
Downton Abbey Season 4. Part 2 of 8. The fates of several characters converge at a house party; Gregson impresses Robert; Anna faces trouble. *Repeated 3 pm 12/21.*
- 10:00 Masterpiece Classic (TV-PG) (DVS)**
Downton Abbey Season 4. Part 3 of 8. Love is in the air at Downton Abbey, and darker emotions too, as Mary, Edith, Tom and Anna each struggle with a dilemma. *Repeated 2 am Tuesday; and 4 pm 12/21.*
- 11:00 Woodsongs (TV-G)**
Amy Ray and John Fullbright.

15 Monday

- 7:00 Antiques Roadshow (TV-G)**
Junk in the Trunk 4. Part 2 of 2. New appraisals from all eight cities of the 2014 season. Highlights include a Steiff Pushmi-Pullyu Doctor Dolittle character; a Pablo Picasso linocut; and a pair of Italian carved door panels. *Repeated 1 am Tuesday; and 7 pm Saturday.*
- 8:00 Antiques Roadshow (TV-G)**
Denver, Colo. Part 3 of 3. Highlights include two circa 1958 prototype modernist chairs; a turn-of-the-century salesman's sample canoe; and a 1941 Martin guitar. *Repeated midnight; and 4 am Wednesday.*
- 9:00 Journey to Planet Earth (TV-PG)**
Extreme Realities: Severe Weather, Climate Change, and Our National Security. At a time of fierce partisan debates about climate change, this new series hosted by Matt Damon makes a strong case for finding ways to cope with the challenges of a rapidly changing planet. *Repeated 3 am Wednesday; and 3 am Saturday.*
- 10:00 Last of the Summer Wine**
- 10:30 Newsline**
- 11:00 Charlie Rose**

WILL-TV

16 Tuesday

- 7:00 Sacred Journeys with Bruce Feiler (TV-PG) (DVS)**
Lourdes. Part 1 of 6. See article page 11. A group of wounded U.S. military travels to the famous Catholic shrine in southwest France in search of healing. *Repeated midnight; 3 am Thursday; and 2 am Sunday.*
- 8:00 Sacred Journeys with Bruce Feiler (TV-PG) (DVS)**
Shikoku. Part 2 of 6. See article page 11. People from Japan and around the world take part in a 750-mile pilgrimage that includes 88 temples and shrines with a connection to Buddhist monk Kobo Daishi. *Repeated 1 am Wednesday; 4 am Thursday; and 3 am Sunday.*
- 9:00 Rick Steves Special (TV-G)**
The Holy Land, Israelis and Palestinians Today. See article page 16.
- 10:00 Last of the Summer Wine**
- 10:30 Newsline**
- 11:00 Charlie Rose**

17 Wednesday

- 7:00 Nature (TV-PG) (DVS)**
Elsa's Legacy: The Born Free Story. A look back at what has happened to the lions and people featured in the book since it was published in 1960. *Repeated midnight.*
- 8:00 NOVA (TV-PG)**
Making Stuff Wilder. From underwater wi-fi based on dolphin communication, to robotic "mules" for the military, *New York Times* technology correspondent David Pogue showcases new inventions and technologies. *Repeated 1 am Thursday; and 3 am Friday.*
- 9:00 NOVA (TV-PG)**
Making Stuff Colder. David Pogue explores the frontiers of cold science, from saving the lives of severe trauma patients to ultracold physics, where bizarre new properties of matter are the basis of new technologies like levitating trains and quantum computers. *Repeated 2 am Thursday; 4 am Friday; and 1 am Sunday.*
- 10:00 Last of the Summer Wine**
- 10:30 Newsline**
- 11:00 Charlie Rose**

18 Thursday

- 7:00 Mid-American Gardener (TV-G)**
Repeated 11 am Saturday.
- 7:30 Illinois Pioneers**
Mark Rubel. See article page 17.
- 8:00 Doc Martin (TV-PG)**
The Apple Doesn't Fall. Portwenn's new police officer has narcolepsy; village plumber Bert Large is having a midlife crisis.
- 9:00 Father Brown (TV-PG)**
The Grim Reaper. Farmer John Tatton's son, Alfred, is found dead after being caught in farm machinery; soon after, anonymous letters accuse Dr. Crawford of the crime.
- 10:00 Last of the Summer Wine**
- 10:30 Newsline**
- 11:00 Charlie Rose**

19 Friday

- 7:00 Friday Night Public Affairs**
See page 12.
- 8:00 Christmas with the Mormon Tabernacle Choir featuring Deborah Voigt and John Rhys-Davies**
Soprano Deborah Voigt and British actor John Rhys-Davies join the choir for holiday favorites, including "The Holly and the Ivy" and "The Twelve Days of Christmas." *Repeated 1 am Saturday; 3 am Monday; 7 pm Wednesday; 2 am Friday; and 3 am 12/28.*
- 9:00 Christmas in Norway with the St. Olaf Choir (TV-G)**
Filmed in one of the oldest Gothic cathedrals in the world (Nidaros Dom), this music special features the St. Olaf College Choir from Northfield, Minn. *Repeated 2 am Saturday; and 4 am Monday.*
- 10:00 Last of the Summer Wine**
- 10:30 Newsline**
- 11:00 Charlie Rose**

20 Saturday

- 7:00 Antiques Roadshow (TV-G)**
Junk in the Trunk 4. Part 2 of 2. *Repeated from 7 pm Monday.*
- 8:00 Britcom Saturday Night**
See page 12.
- 10:00 It's a Wonderful Red Green Christmas**
- 11:00 Doctor Who Series**
The Runaway Bride.

21 Sunday

- 6:00 Masterpiece Classic (TV-PG) (DVS)**
Downton Abbey Season 4. Part 4 of 8. Bates tries to learn what's troubling Anna. Meanwhile, Thomas installs a new ally and Alfred takes up cooking. *Repeated 1 pm Sunday.*
- 7:00 Masterpiece Classic (TV-PG) (DVS)**
Downton Abbey Season 4. Part 5 of 8. Rose's surprise party for Robert risks scandal. Mary meets an old suitor while Edith gets troubling news. *Repeated 2 pm Sunday.*
- 8:00 Masterpiece Classic (TV-14) (DVS)**
Downton Abbey Season 4. Part 6 of 8. When Robert and Thomas make a sudden trip, everyone's life becomes more complicated. Mary and Blake come together over pigs. An unwelcome visitor appears. *Repeated 12:30 am Monday; 2 am Tuesday; and 3 pm Sunday.*
- 9:00 Masterpiece Classic (TV-PG) (DVS)**
Downton Abbey Season 4. Part 7 of 8. Robert and Thomas return from America; Bates disappears for a day; Edith prepares to go abroad; suitors flock to Mary; and Rose makes her move. *Repeated 1:30 am Monday; 3 am Tuesday; and 4 pm Sunday.*
- 10:00 Globe Trekker (TV-G) (DVS)**
Delhi & Rajasthan, India.
- 11:00 Woodsongs (TV-G)**
David Broza and Mike Stevens & Okaidja Afroso with Raymond McLain.

22 Monday

- 7:00 Antiques Roadshow (TV-G)**
The Boomer Years. Vintage treasures from the Baby Boom years include a 1956 Elvis "Love Me Tender" standee; a 1958 Martin Luther

King Jr. letter; and circa 1960 Charles Schulz comic strip art. *Repeated 7 pm Saturday.*

- 8:00 Antiques Roadshow** (TV-G)
Phoenix, Ariz. Part 1 of 3. Highlights include a circa 1905 advertising display for waterproof baby pants; a 1797 Chippendale marriage chest; and a collection of original Charles Schulz "Peanuts" artwork. *Repeated midnight.*
- 9:00 Tales from the Royal Bedchamber** (TV-PG)
A look at the changing fortunes of the monarchy as shown through the rise and fall of their magnificent beds. *Repeated 1 am Tuesday.*
- 10:00 Last of the Summer Wine**
- 10:30 Newsline**
- 11:00 Charlie Rose**

23 Tuesday

- 7:00 Sacred Journeys with Bruce Feiler** (TV-PG) (DVS)
Jerusalem. Part 3 of 6. See article page 11. During the week of Sukkot, Jews and Christians travel "the Jesus trail" from Galilee to Jerusalem. *Repeated midnight; and 3 am Thursday.*
- 8:00 Sacred Journeys with Bruce Feiler** (TV-PG) (DVS)
Hajj. Part 4 of 6. See article page 11. Millions gather to take part in the annual five-day pilgrimage in Saudi Arabia, an event open only to Muslims. *Repeated 1 am Wednesday; and 4 am Thursday.*
- 9:00 Frontline**
From Jesus to Christ: The First Christians. Part 1 of 2.
- 11:00 Charlie Rose**

24 Wednesday

- 7:00 Christmas with the Mormon Tabernacle Choir** featuring Deborah Voigt and John Rhys-Davies
Repeated from 8 pm Friday.
- 8:00 Purdue 80th Anniversary Christmas Show** (TV-G)
See article page 16.
- 9:00 Joshua Bell Presents Musical Gifts** (TV-G)
See article page 11.
- 10:00 National Christmas Tree Lighting 2014**
Join the nation's first family for this annual tradition.
- 11:00 First Silent Night** (TV-G)
Actor Simon Callow uncovers the moving origins of the "Silent Night" Christmas carol, now translated into 300 languages.

25 Thursday

- Noon 30th Annual Fort Lauderdale Christmas Pageant**
- 1:00 Around the World: The Crane Candlelight Concert**
- 2:00 50th Annual Holiday Wassail Concert**
- 3:00 Anderson University's Candles & Carols**
- 4:00 Holiday Handbells: The Raleigh Ringers**
- 7:00 Call The Midwife Holiday Special** (TV-14)
See article page 16. *Repeated midnight; and 1 am Tuesday.*
- 8:30 Vicious** (TV-14)
Holiday Special. Freddie and Stuart host a holiday soiree. A wicked game of Truth or Dare

brings up hidden truths. *Repeated 9:30 pm Friday.*

- 9:00 Father Brown** (TV-PG)
The Laws of Motion. Ruthless Audrey McMurray, a rally driver and property owner, is killed in a hill climb after someone tampers with her car's brakes.
- 10:00 Last of the Summer Wine**
- 10:30 Newsline**
- 11:00 Charlie Rose**

26 Friday

- 7:00 Friday Night Public Affairs**
See page 12.
- 8:00 American Masters** (TV-G)
Bing Crosby Rediscovered. *Repeated from 7 pm 12/2.*
- 9:30 Vicious** (TV-14)
Holiday Special. *Repeated from 8:30 pm Thursday.*
- 10:00 Last of the Summer Wine**
- 10:30 Newsline**
- 11:00 Charlie Rose**

27 Saturday

- 7:00 Antiques Roadshow** (TV-G)
The Boomer Years. *Repeated from 7 pm Monday.*
- 8:00 Britcom Saturday Night**
See page 12.

28 Sunday

- 7:00 The Great British Bake-Off**
In this top-rated United Kingdom program, 12 home bakers take part in a baking competition which tests every aspect of their skills in the quest to be crowned Britain's best amateur baker.
- 8:00 Masterpiece Classic** (TV-PG) (DVS)
Downton Abbey Season 4. Part 8 of 8. Lady Rose meets the Prince of Wales and faces a dilemma. Trouble also plagues Cora's mother, her brother, Edith and almost everyone else at Downton Abbey. *Repeated 12:30 am Monday; and 2:30 am Tuesday.*
- 10:00 Globe Trekker** (TV-G) (DVS)
Globe Trekker Special: Pirates, Galleons & Treasure.
- 11:00 Woodsongs** (TV-G)
Suzy Bogguss and Valerie June.

29 Monday

- 7:00 Antiques Roadshow** (TV-G)
Manor House Treasures. Inspired by the estates in period dramas such as *Downton Abbey*, this episode features a circa 1810 Lord Byron cellarette and portrait; a Louis Vuitton steamer trunk; and a 1905 Louis Comfort Tiffany necklace.
- 8:00 Antiques Roadshow** (TV-G)
Phoenix, Ariz. Part 2 of 3. Highlights include a 1982 bronze maquette by renowned sculptor Henry Moore; an heirloom amethyst jewelry collection; and an early abstract painting by noted modern artist Chuck Close. *Repeated midnight.*

WILL-TV

9:00 Independent Lens (TV-PG)
Don't Stop Believin': Everyman's Journey.
Follow the real life rock and roll fairy tale of Filipino Arnel Pineda, selected from his YouTube video to become the frontman for iconic American rock band Journey.
Repeated 3 am Wednesday.

10:30 Newline

11:00 Charlie Rose

30 Tuesday

7:00 Sacred Journeys with Bruce Feiler (TV-PG) (DVS)
Kumbh Mela. Part 5 of 6. See article page 11. A look at the Hindu festival where people come to bathe in the water where the sacred Ganges and Yamuna Rivers meet. *Repeated midnight.*

8:00 Sacred Journeys with Bruce Feiler (TV-PG) (DVS)
Osun-Osogbo. Part 6 of 6. See article page 11. A group of African Americans travels to Nigeria to attend the festival honoring the Yoruba Goddess Osun. *Repeated 1 am Wednesday.*

9:00 Frontline
From Jesus to Christ: The First Christians.
Part 2 of 2.

11:00 Charlie Rose

31 Wednesday

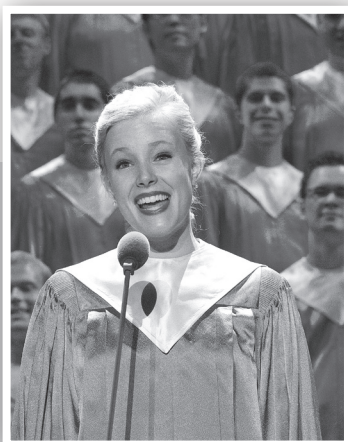
7:00 Live from Lincoln Center (TV-G)
Gershwin Celebration at The New York Philharmonic with Dianne Reeves. This annual New Year's Eve celebration rings in 2015 with George Gershwin favorites, featuring Dianne Reeves and Norm Lewis. *Repeated 10 pm.*

9:00 Michael Feinstein New Year's Eve at the Rainbow Room
Performers include Kelli O'Hara, Christine Ebersole, Darren Criss (Glee), Aaron Tveit (Graceland) and Leslie Odom (Smash).

10:00 Live from Lincoln Center (TV-G)
Gershwin Celebration at The New York Philharmonic with Dianne Reeves. *Repeated from 7 pm.*

Beautiful music from West Lafayette

More than 280 campus and community performers are featured in **Purdue University's 80th Anniversary Christmas Special** at 8 pm Wednesday, Dec. 24. The program takes viewers from the show's beginnings in 1933 up to the 2013 concert.



Holiday time at Nonnatus House

Join your favorite midwives for this third holiday special of the critically acclaimed series, which will begin its fourth full season in March 2015. **Call the Midwife 2014 Holiday Special** is at 7 pm Thursday, Dec. 25.



Gaining understanding of lands considered holy

A new **Rick Steves' Special: The Holy Land, Israelis and Palestinians Today** (9 pm Tuesday, Dec. 16) weaves together both the Israeli and the Palestinian narratives to better understand a place that is, for a third of humanity, literally holy land. Steves delves deeply to better understand and empathize with both peoples, learning about security walls, disputed settlements and the persistent challenges facing the region as Israelis and Palestinians learn to coexist peacefully.





Illinois Pioneers guests: a youth mentor and a recording studio founder

Retired electrician Jeff Perkins (above, left) founded Caring Black Men of Decatur several years ago after seeing too many news stories about young men getting into trouble. Perkins got together a group of about 20 men to begin an effort to provide mentors and role models for African American youth. “They sit down and talk with young men about what it is to be a man and about the expectations of their family and community,” said **Illinois Pioneers** host David Inge.

David’s conversation with Perkins is one of two new **Illinois Pioneers** episodes airing this month. This episode airs at 7:30 pm Thursday, Dec. 11.

Caring Black Men of Decatur now works in 13 of 22 Decatur schools and sees 300 young men a week. “Perkins says school officials have been pleased with the results pointing to improved grades and behavior



for the young men who participate,” David says.

On Dec. 18, **Illinois Pioneers** sits down with Mark Rubel (above, right), founder of the legendary Pogo Studio. “When Rubel was 8 years old, his parents gave him a little battery-powered tape machine,” David said. He experimented with recording and then splicing, cutting and altering the tape any way he could. When he was 12, he took up the bass after seeing an instrument in a store shining like it was “lit from heaven,” David said. “So it’s probably not a surprise that he became a musician.” Rubel has played bass with Captain Rat and the Blind Rivets for more than 30 years.

From the mid-1980s until last year, Rubel worked at Pogo Studio in downtown Champaign. Now he lives in Nashville, where he teaches studio technique at the Blackbird Academy, housed in one of Nashville’s and the world’s best recording studios. “He recently purchased a home that came with its own studio, where he says Pogo will rise again,” David said.



DECEMBER 31, 2014—“Decades of Song”
The Virginia Theater, 203 West Park St., Champaign

Celebrate the coming of the New Year with The CHORALE! Conducted by its founding director, Julie Beyler, and accompanied by Dr. Michael Hammer, The CHORALE will sing familiar melodies from the 40’s, 50’s and 60’s and will showcase the award winning barbershop quartet, **After Hours**. Tickets are available at the Virginia Theatre, by phone at 217-356-9063, or online at thevirginia.org.

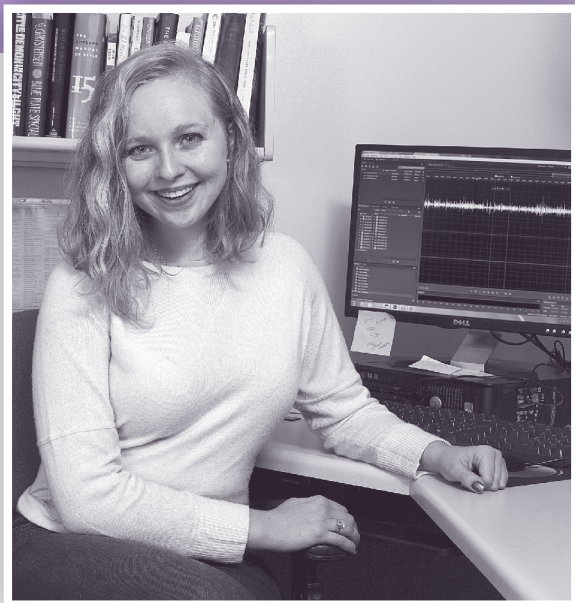
www.thechorale.org

Intern **Lise Graham** brings new **social media** perspective to **WILL**

Lise Graham sees the good side and the bad side of social media. “I think it’s the enemy sometimes, for sure,” said the University of Illinois College of Media senior in broadcast journalism. “For my generation, it so easily skews people’s perceptions of themselves. It’s not real.”

But there’s a lot that’s positive about using social media such as Twitter, Facebook and Instagram. “I think helping people find Illinois Public Media content in new ways is exciting,” she said. Her generation has to be good at social media because many careers today require it, and because it is useful in managing their social lives. “But lately, I’ve made it a point to find an application for social media in the real world—like cooking and reading and enjoying my friends,” she said.

Lise is interning in the WILL newsroom this semester, offering story ideas and



helping strategize about the use of social media. She’s researching Tumblr, another form of social media, and will report her findings to marketing director Lisa Bralts.

Many of her friends won’t listen to a long news story on the radio or online. “I believe that radios will be around as long as there are cars,” she said. “That’s great, but what are we going to do with it? How are we going to make people care?”

Public media may seem old-fashioned, Lise said, but it’s the most sincere option. “It all comes back to the honesty and transparency. It’s a liberated but unappreciated mechanism that we have.”

Lise grew up watching WTTW-TV so she learned the value of public media early. She discovered public radio when her uncle told her to listen to WBEZ Chicago’s **Wait, Wait...Don’t Tell Me**. “The first podcast I listened to was *The Moth*,” she said. “I love stories. If you have a good story, I want to hear it.”

In high school, she worked at the award-winning radio station at Lyons Township High School in La Grange. In college, she has interned at WGN Radio and Norton Advertising Agency, both in Chicago, and has been a writer, producer, social media director and on-air personality at WPGU Radio in Champaign. She spent a semester abroad at the University of Sheffield in England where she worked at Forge Student Radio. “I’d love to work overseas,” she said.

A gift for one that’s a gift for all

Did you know that you can give a one-year **WILL membership** to a friend or family member?

And if the gift to WILL is \$40 or more, that special person will be reminded of your generosity every month when he or she receives this *Patterns* member program guide.

At the \$72 level and above, your friend or family member also receives the WILL Membercard that offers 2-for-1 dining at participating restaurants as well as discounts on lodging, special attractions and online shopping retailers.

Call 217-244-9455 or 1-800-898-1065 or make the gift online at willpledge.org, then enter the recipient’s name and address in the comment section of the form.

Book Mentor Profile: Sarah Dean

Why did you become a Book Mentor?

I'm blessed that the company I work for, Rogards Office Plus in Champaign, offers paid volunteer hours every quarter. I knew I wanted to do something with literacy... then through one of our customers, Meyer Capel Law Firm, I learned from our contact about their involvement with the Book Mentor Project. I immediately thought it was a great opportunity for me. I love working with preschool and elementary school age kids and to be able to combine time with kids and literacy seemed like such a wonderful thing.

Did you love reading when you were a child?

Actually, I was a slow reader...I enjoyed reading, but really struggled with it. So it's important for me now to make reading fun for kids.

What do you enjoy about reading to the kids on Book Mentor days?

I like the theatrics of it and that they get invested in the characters. I also enjoy seeing their reactions to what's happening in the story and getting them involved with it—I like that exchange.

What was your favorite childhood book?

The one that I have the best memories of is a Dr. Seuss book called *Oh Say Can You Say?* that I read with my mom. It's a book of tongue twisters with fun characters and made-up words.

What is your favorite book you've read to the Book Mentor kids?

Not a Box. It's so simple, and it leaves so much room for generating ideas and encouraging kids' imaginations.

Amdocs, Meyer Capel, PNC and Rogards all have employees who participate in the Book Mentor Project, along with community volunteers. They visit early childhood classrooms once a month to share a book and do an activity with the children. PNC supports the Book Mentor Project with a three-year \$90,000 grant.

Book Mentor Project by the numbers

75 community volunteers

4,248 books provided
to 700 families annually

42 early childhood
classrooms served

▼ Sarah Dean (left) and Heather Culbertson of Rogards share the story *Not a Box* as volunteers through the Book Mentor Project.





▲ Left to right: Bob Swires, Danville; Susan Adams, Atlanta (secretary); Dave Krchak, Champaign (vice chair); Belinda De La Rosa (Urbana); Jan Mandermach, Decatur (chair); Jon Dietrich (Urbana); Candice Underhill (Danville); Ritchie Barnett (Decatur); Joan Friedman (Urbana); Dale Durchholz (Bloomington); Lori West (Champaign); Allan Penwell (Champaign); Lois Gullerud (Champaign); Ken Buel (Champaign); Dawn Durchholz (Bloomington); Steve Rugg (Urbana).

Not pictured: John Adams (Atlanta); Ann Beck (Charleston); Bill Black (Danville); Dave Grothe (Savoy); Joe Lewis (Champaign); George Richards (Danville).

CAC offers advice and guidance

Twenty-two individuals representing the WILL stations' geographic service areas across central Illinois comprise the Community Advisory Committee for Illinois Public Media.

The group, which reconvened this fall for the new fiscal year, gathers information and

opinions about community issues and needs; helps heighten awareness of the WILL stations and services of Illinois Public Media; advocates for broad-based support; identifies and encourages new sources of funding for specific projects; and reviews and advises on legislation designed to improve the quality of public media.

most people don't put "care" and "furniture" in the same sentence...
wedo.
 techline[®]
Functional. By design.

307 South Locust • Champaign
 217.352.5570
 Mon. – Fri. 9 am to 5 pm
 Saturdays..... by appointment

TECHLINE-CU.com

Gifts that keep on giving

We don't have a connection to the North Pole... we have something better—dedicated Program Underwriters that can make this season of gift giving like a ride in a sleigh. So as you get underway with shopping and preparing for holiday gatherings, remember to support the businesses that support your local public media.

Thanks and best wishes for healthy, happy holidays!

ALTO Vineyards

4210 N. Duncan Rd., Champaign
217-356-4784
altovineyards.net

Asahel Gridley Antique Shop

217 E. Front St., Bloomington
309-829-9615
gridleyantiques.com

Body Therapy Shop

801 W. Springfield Ave., Champaign
217-531-8287
300 S. Broadway Avenue #155b, Urbana
217-531-8287
bodytherapysshop.com

Bodywork Associates

407 Windsor Rd., Champaign
217-351-1011
bodyworkassociates.com

Champaign Cycle

506 S. Country Fair Dr., Champaign
217-352-7600
champaigncycle.com

Country Arbors Nursery

1742 County Rd. 1400 N, Urbana
217-367-1072
countryarbors.com

Danville Gardens

1307 Cleary Ave., Danville
217-442-4944
danvillegardens.com

Eastern Rug Gallery

1402 S. Neil St., Champaign
217-352-6784
easternruggallery.com

Heel to Toe

106 W. Main St., Urbana
217-367-2880
heel2toe.net

Hudson Drug and Hallmark Shop

108 N. Market St., Paxton
217-379-4858
hudsondrugshop.com

Jane Addams Book Shop

208 N. Neil St., Champaign
217-356-2555
janeaddamsbooks.com

Lincoln Square

300 S. Broadway Ave., Urbana
217-367-4092
lincolnsquareurbana.com

Pars Rug Gallery

229 E. Front St., Bloomington
309-828-1336
parsruggallery.com

Sew Sassy

156 N. Lincoln Ave., Urbana
217-328-1591
sewsassyquiltshop.com

Sweeney Brothers Rug Gallery

11 Westport Ct., Bloomington
309-662-7800
sweeneybrothers.com

Ten Thousand Villages

105 N. Walnut St., Champaign
217-352-8200
tenthousandvillages.com/champaign

These Four Walls

101 S. State St., Monticello
217-762-3500
these4walls.net

Yoga Institute of Champaign-Urbana

407 W. Springfield Ave., Urbana
217-344-9642
yoga-cu.com



THE NUTCRACKER



DECEMBER

- 2 Cantus and Theater Latté
Da: *All Is Calm: The Christmas Truce of 1914*
- 4 Krannert Uncorked
- 4-7 *The Nutcracker*
- 5 Sinfonia da Camera: *Messiah and Mendelssohn*

- 7 Winter Festival
- 11 Krannert Uncorked
- 19 Dance for People with Parkinson's



krannert center



217.333.6280 • KRANNERTCENTER.COM

MOVING?

Let your public broadcasting membership move with you.

Fill out the form below and send it with your address label to:
Friends of WILL, 300 North Goodwin Avenue, Urbana, IL 61801-2316

Let us know six weeks in advance of moving so that we can make the proper change.

- Check here if you wish to remove your name from our membership list.
- Please update my membership with this new address:

Name _____

Street _____

City _____ State _____ Zip _____

Phone day () _____ evening () _____

Friends of WILL
Campbell Hall for Public Telecommunication
300 North Goodwin Avenue
Urbana, IL 61801-2316

NONPROFIT
 ORGANIZATION
 U.S. POSTAGE PAID
 CHAMPAIGN, IL
 PERMIT NO. 453