

patterns

june 2016



**Carol Burnett's
Favorite Sketches at
8 pm Friday, June 3**



Illinois Public Media™

WILL radio.tv.online

Membership Hotline: 800-898-1065

WILL AM-FM-TV: 217-333-7300

Campbell Hall for Public Telecommunication
300 N. Goodwin Ave., Urbana, IL 61801-2316

Mailing List Exchange

Donor records are proprietary and confidential.
WILL does not sell, rent or trade its donor lists.

Patterns

Friends of WILL Membership Magazine

Editor: Sarah Whittington

Art Director: Michael Thomas

Designer: Laura Adams-Wiggs

Printed by Premier Print Group.



Printed with SOY INK
on RECYCLED,
RECYCLABLE paper.

Radio

90.9 FM: A mix of classical music and NPR information programs, including local news. (Also heard at 106.5 in Danville and with live streaming on will.illinois.edu.) See pages 4-5.

101.1 FM and 90.9 FM HD2: Locally produced music programs and classical music from C24. (101.1 is available in the Champaign-Urbana area.) See page 6.

580 AM: News and information, NPR, BBC, news, agriculture, talk shows. (Also heard on 90.9 FM HD3 with live streaming on will.illinois.edu.) See page 7.

Television

WILL Create

Cooking, travel, gardening and home improvement, arts and crafts. 12.3; also available on Comcast and Mediacom. See page 8.

WILL World

PBS documentaries, news and public affairs. 12.2; also available on Comcast and Mediacom. See page 8.

WILL-HD

All your favorite PBS and local programming, in high definition when available. 12.1; Contact your cable or satellite provider for channel information. See pages 9-16.

Online

will.illinois.edu



facebook.com/WILLradiotvonline



@willpublicmedia



@willpublicmedia

Get WILL eNews

Video previews, behind-the-scenes information, program schedule updates and more, delivered every Wednesday to your email inbox.

go.illinois.edu/WILLsubscribe

PATTERNS • JUNE 2016

patterns

June 2016 Volume XLIII, Number 12



Last June, I wrote to you about the anticipation of budget cuts from the state to both the University and the Illinois Arts Council. Here we are, a year later, and we're still reeling from the impact of a state with no budget. As if that weren't enough, we continue to wonder if a budget for FY 17 will be just as absent.

And yet, despite the chaos of our state budget, our devoted Friends continue to provide our most important, reliable support. Pledge drives in March and April exceeded our goals, including our first attempt at a "silent" radio drive. You've made it clear that WILL is an important part of your life and therefore worthy of your donations.

Now, I ask you to do it again: help us make our \$2.1 million end-of-fiscal-year pledge goal through an additional gift or membership renewal. At press time, we still need to raise more than \$300,000 to meet our target. Contributing to WILL is fast and easy: go to willpledge.org or mail in your pledge with the envelope included in this issue. Show us that the work we do matters. In return, we promise to exceed your expectations for quality programming through web, radio, and television.

Thank you for your dependability in a constantly fluctuating economic climate. Together, we create superior public broadcasting.

Moss Bresnahan, President and CEO
Twitter: @MossILMedia



Went with the wind

Join beloved funny lady Carol Burnett as she presents her own personally-selected favorite moments from her long-running variety series *The Carol Burnett Show*. Laugh along with Carol and her hilarious troupe of regulars — Harvey Korman, Tim Conway, Vicki Lawrence and Lyle Waggoner — and special guests Steve Martin and Betty White. Several of the sketches Carol selected include footage from the first five years of the series, which have never been re-aired. **Carol Burnett’s Favorite Sketches** premieres at 8 pm Friday, June 3.



From 1967 to 1978, the prime-time comedy-variety series won 25 Emmy Awards, and showcased the wonderful wacky brand of comedy that was uniquely Carol’s own. Just some of Carol’s favorite sketches include:

“As the Stomach Turns: Close Encounters”

The soap opera parody pokes fun at the alien visitation classic *Close Encounters of the Third Kind* with guests Steve Martin and Betty White.

“The Dentist”

The famous sketch with Harvey Korman as the very first patient of nervous dentist Tim Conway, who accidentally injects himself with Novocain.

“Went With the Wind”

Ranking as one of the greatest sight gags in TV history: Starlet O’Hara (Carol) appears in a dress made from curtains in this famous *Gone With The Wind* parody.

“Nora Desmond: The Commercial”

Carol satirizes Norma Desmond from *Sunset Boulevard* as an actress looking for a career via a Knock ’Em Dead bug spray commercial.

“Tudball and Wiggins”

Mr. Tudball and his secretary Mrs. Wiggins are up to their old shenanigans trying to implement a fire safety program.

“As the Stomach Turns: Mother Marcus”

A hilarious visit from Canoga Falls’ most notorious snoop.

Photo: Courtesy of T.J.L. Productions

Classic hits highlight new programming

As we approach the end of our fiscal year, we encourage you to enjoy our wonderful programming and make a pledge to sustain local public broadcasting. Through your support, we not only continue to air your favorite national shows, but we also create and produce local programs that fit the needs of our area. Our supporters make the station, whether you watch, listen, read, or all of the above.



Photo: Courtesy of Craig Bailey

Our Favorite Stories

On **Genealogy Roadshow** at 7 pm Tuesday, June 7, genealogists Mary Tedesco, Joshua Taylor, and Kenyatta Berry revisit their favorite stories from previous seasons, and three memorable guests return to share what has happened since their appearances. Tedesco reconnects with a man whose elderly mother received the gift of a lifetime when she learned about the family she never knew, while Taylor catches up with a woman whose reunion with a cousin has reshaped her life. Finally, Berry hears how the revelation of a mother's identity has extended the branches of a mystery writer's family tree.



npr ELECTION 2016 continues

WILL-AM 580 will air live coverage of the primary elections on Tuesday, June 7. NPR correspondents will provide the in-depth election coverage and analysis that you expect on the issues, debates and campaigns. Special coverage will feature candidate speeches, newsmaker interviews, and updates from NPR correspondents at key candidate headquarters as the New Jersey, North Dakota (Democratic), New Mexico, South Dakota, Montana and California primary results filter in. Additionally, we will feature political analysis from NPR's Mara Liasson and Ron Elving. Tune in to hear the latest as we march towards the conventions.

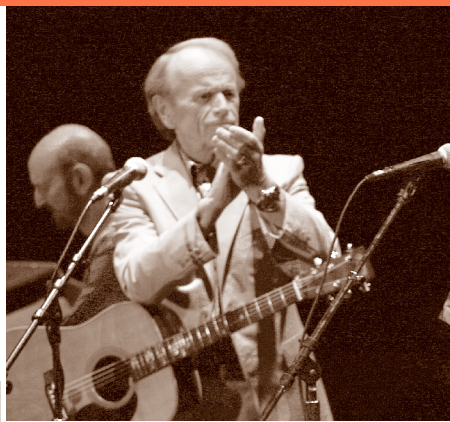


Photo: Courtesy of Joseph Sinnott/WNET



Photo: Courtesy of © Melinda Wickman 2010



Courtesy of Shari Belafonte Harper

Happy Birthday Joan

Joan Baez celebrated her 75th birthday on Saturday, January 27 at New York's historic Beacon Theatre. The special event honored her legendary 50-plus years in music with an intimate, career-spanning live performance. Baez performed alongside a remarkable array of superstar artists including: David Bromberg, Jackson Browne, Mary Chapin Carpenter, Judy Collins, David Crosby, Emmylou Harris, Indigo Girls, Damien Rice, Paul Simon, Mavis Staples, Nano Stern, and Richard Thompson. The special **Joan Baez 75th Birthday Celebration** airs at 8 pm Saturday, June 4.

Sloop John B

In 1957, The Kingston Trio emerged to take the country by storm, bringing the rich tradition of American folk music into the mainstream for the first time. The Trio quickly enjoyed unprecedented record sales and worldwide fame, while influencing the musical tastes of a generation. Through changing times and lineups, the Trio has played on, remaining popular for a simple reason — their timeless songs. And nearly 60 years after “Tom Dooley” shot to the top of the charts, today’s Trio is still on the road, bringing back all the great memories and making new ones.

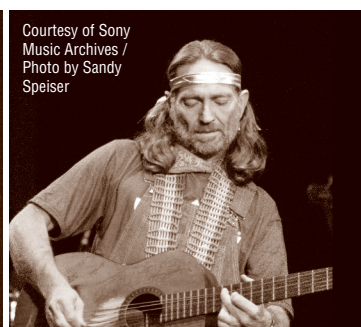
In June 2015, the once and current Trio members met to perform a once-in-a-lifetime celebration of the group and its legacy. They were joined by Timothy B. Schmit of The Eagles, Al Jardine of The Beach Boys, Trini Lopez, Barry McGuire of the New Christy Minstrels, Sana Christian, and The Limelites, along with Josh Reynolds, son of the late founding Trio member Nick Reynolds. Watch **The Kingston Trio Celebration** at 9:30 pm Tuesday, June 7.



Courtesy of Sony Music Archives / Photo by JT Phillips



Photo: Courtesy of Sony Music Archives / Photo by Sandy Speiser



Courtesy of Sony Music Archives / Photo by Sandy Speiser

Once in a lifetime concert

The Highwaymen Live at Nassau Coliseum features Willie Nelson, Kris Kristofferson, Waylon Jennings, and Johnny Cash performing a previously unreleased concert film recorded live in Uniondale, N.Y., in 1990. The concert demonstrates the group’s chemistry and the power of their combined music catalog including “Highwayman,” “Sunday Morning Coming Down,” “Folsom Prison Blues,” “Mammas Don’t Let Your Babies Grow Up To Be Cowboys,” “Always On My Mind,” “Me and Bobby McGee,” “Desperados Waiting For A Train,” “Luckenbach, Texas,” “Silver Stallion” and more.

Nelson, Jennings, Cash and Kristofferson liberated American pop and country music from record label-and-producer control to create a new musical landscape where the artists controlled their songwriting, recording and performing. Each had achieved considerable success prior to 1985, at which time they began to strategize about working together to revitalize the country music scene and satisfy their own restless creativity. This unique concert premieres at 8 pm Tuesday, June 7.



▲ National Youth Orchestra of the USA performs at 7 pm Monday, June 27



▲ Regina Rossi and Cameron D. Craig sing with the Eastern Symphony Orchestra at 7 pm Friday, June 10

weekdays

6 am

NPR Morning Edition

with Renee Montagne, Steve Inskeep and David Greene

9 am

Classic Mornings with Vic Di Geronimo

Join Vic for music and companionship and make each morning a classic morning!

Noon

Afternoon Classics

Garrison Keillor's *The Writer's Almanac* is at 1:01. **NPR News Headlines** at 3:01.

5 pm

NPR All Things Considered

with Robert Siegel, Audie Cornish, Kelly McEvers and Ari Shapiro

7 pm

The Evening Concert

Great performances from the great concert venues. Also on Sundays from 7-9 pm. *Listings are subject to change.*

Monday:

Carnegie Hall Live!

- 6/6 **Vienna Philharmonic Orchestra**
Conductor: Valery Gergiev
Debussy: *La mer*
Mussorgsky: *Pictures at an Exhibition*
- 6/13 **Bavarian Radio Symphony Orchestra**
Conductor: Mariss Jansons
Shostakovich: *Symphony No. 7 in C Major*
- 6/20 **Yuja Wang, piano**
Works by Bach, Chopin, and others
- 6/27 **National Youth Orchestra of the USA**
Conductor: Charles Dutoit
Tan Dun: *Passacaglia: The Secret of Wind and Birds* (commissioned by Carnegie Hall)
Beethoven: *Piano Concerto No. 5 in E-flat Major, "Emperor"* (Yundi, piano)
Berlioz: *Symphonie fantastique*

Tuesday:

Chicago Symphony Orchestra

- 6/7 **Salonen conducts Ravel**
Ravel: *Mother Goose Suite*
Debussy: *La damoiselle élue*
Ravel: *L'enfant et les sortilèges*

6/14 Muti conducts Schubert Unfinished

Schubert: *Symphony No. 8 (Unfinished)*
Elgar: *Cello Concerto in E Minor* (John Sharp, cello)
Schubert: *Symphony No. 2*

6/21 Muti conducts Scriabin and Beethoven

Prokofiev: *Symphony No. 1 (Classical)*
Scriabin: *Prometheus, the Poem of Fire*
Beethoven: *Symphony No. 8*
Mozart: *Symphony No. 38 (Prague)*

6/28 Muti Conducts Mahler

Schubert: *Symphony No. 5*
Mahler: *Symphony No. 1*
Haydn: *Symphony No. 48 (Maria Theresa)*

Wednesday:

San Francisco Symphony

- 6/1 Pablo Heras-Casado
Igor Levit, piano
Haydn: *Symphony No. 44 in E minor, Mourning*
Mozart: *Piano Concerto No. 9 in E-flat major*
Debussy: *Prelude à L'Après-midi d'un faune*
- 6/8 Esa-Pekka Salonen
Ravel: *Ma Mère l'Oye Suite*
Stravinsky: *The Firebird [complete]*
- 6/15 Michael Tilson Thomas
Jean-Yves Thibaudet, piano
Bernstein: *Symphony No. 2, The Age of Anxiety*
Mahler: *Symphony No. 4 in G major*
Copland: *Quiet City*
- 6/22 Michael Tilson Thomas
Alexander Barantschik, violin
Jonathan Vinocour, viola
Samuel C. Adams: *Radial Play*
Mozart: *Sinfonia concertante in E-flat major for Violin and Viola, K.364 (320d)*
Bartók: *Concerto for Orchestra*
Debussy: *Nocturnes*
- 6/29 Charles Dutoit, cond.; Gautier Capuçon, cello
Elgar: *Cello Concerto in E minor, Opus 85*
Mussorgsky/Ravel: *Pictures at an Exhibition*

Thursday:

The New York Philharmonic This Week

- 6/2 Jaap van Zweden, conductor
Yuja Wang, piano
Prokofiev: *Piano Concerto No. 3*
Mahler: *Symphony No. 1*
- 6/9 Alan Gilbert, conductor
Leonidas Kavakos, violin
Sibelius: *Violin Concerto*
Shostakovich: *Age of Gold Suite*
- 6/16 Bramwell Tovey, conductor
Joyce Yang, piano
Virginie Verrez, mezzo-soprano
Massenet: *Selections from Le Cid*

- Falla: Nights in the Gardens of Spain
 Falla: The Three-Cornered Hat
 6/23 Alan Gilbert, conductor
 Heidi Melton, soprano; Eric Owens, bass-baritone
 Sibelius: En Saga
 Wagner: Ride of the Valkyries
 Wagner: Final Scene from Act III, Die Walküre
 6/30 TBA

**Friday:
 Prairie Performances**

- Concerts are subject to availability.*
 6/3 Sinfonia da Camera
 Ian Hobson, conductor and music director
 Three's a Charm (5/3/14)
 Beethoven: Leonore Overture No. 3, Op. 72a
 Beethoven: Piano Concerto No. 3 in C Minor, Op. 37
 Ian Hobson, Piano
 Beethoven: Symphony No. 3 in E-flat Major, Op. 55 "Eroica"
 6/10 Eastern Symphony Orchestra
 Richard Robert Rossi, conductor
 Stagestruck (2/28/16)
 Von Suppe: Light Cavalry Overture
 Doppler: Fantasie Pastorale Hongroise, Op 26
 Jennifer Antkowiak, flute (Concerto Winner)
 Rebecca Carmack, graduate conductor
 Brahms: Hungarian Dances, No. 3*, 4, 5, & 6
 *Cameron Craig, graduate conductor
 Sammut: Sugaria, Concerto for Marimba and String Orchestra
 Jamie Ryan, marimba
 Eastern Symphony Chamber Orchestra
 Khachaturian: 'Sabre Dance', from "Gayneh"
 Jamie Ryan, xylophone
 6/17 Millikin-Decatur Symphony (3/5/16)
 Michael Luxner, conductor and music director
 Sergey Bogza, guest conductor
 Jared Rixstine, piano; Amy Mazzeo, soprano
 Mozart: Ov "The Abduction from the Seraglio"
 Beethoven: Piano Concerto No 2 in Bb, Op. 19- Allegro con brio
 Jared Rixstine, piano
 Handel: 'Let the Bright Seraphim' from "Samson"
 Amy Mazzeo, soprano; Phillip Tsigolaroff, trumpet
 Rossini: 'Una voce poco fa' from "The Barber of Seville"
 Amy Mazzeo, soprano
 Tchaikovsky: Symphony No. 4 in F Minor, Op 36
 6/24 Eastern Illinois University Choral Ensembles
 Richard Robert Rossi, conductor
 Timothy Renner, conductor
 Songs of Love (2/21/16)
 Morley: Now is the Month of Maying
 Michael-Brandon Morales, graduate conductor
 Arcadelt: Il Bianco e Dolci Cigno
 Rebecca Carmack, graduate conductor
 Monteverdi: Mentr'io Mirava Fiso
 Camerata Singers
 Richard Robert Rossi, conductor
 Larkin: A Shakespeare Trilogy
 Nance: Set me as a seal
 University Mixed Chorus
 Timothy Renner, conductor
 Ty Tuttle, accompanist
 Diemer: Madrigals Three
 Rebecca Carmack, graduate conductor
 Frazier: Black is the Color
 Michael-Brandon Morales, graduate conductor
 Rossi: O Mistress Mine, Where Are You Roaming
 Wilkinson: 'If' from "Four Whatever's"

EIU Concert Choir
 Richard Robert Rossi, conductor
 Zhanga Wu, accompanist

9 pm

Night Music

Gillian Martin, Bob Christiansen, Ward Jacobson, Scott Blankenship or John Zech keep you company through the night and into the morning. **NPR News Headlines** at 9:01.

saturdays

7 am

NPR Weekend Edition

with Scott Simon

9 am

Classics By Request

Submit requests to Vincent Trauth at classreq@illinois.edu or **217-265-5064**.

Garrison Keillor's **The Writer's Almanac** at 9:01.

11 am

Classics of the Phonograph

John Frayne's weekly exploration of memorable recordings from the 20th century.

- 6/4 Italian Symphonic Composers: Respighi, Malipiero, Berio
 6/11 The Philips Label's Magnum Opus: Great Pianists of the 20th Century (on 200 CDs!)
 6/18 Short Pieces for Violin and Orchestra
 6/25 Ian Hobson in the Recording Studio

Noon

Afternoon at the Opera

The Lyric Opera of Chicago Season continues.

- 6/4 **Wozzeck** (Berg). Sir Andrew Davis, cond., with Tomasz Konieczny (Wozzeck), Angela Denoke (Maria), and the Lyric Opera Ensemble.
 6/11 **The Merry Widow** (In English) (Lehar). Sir Andrew Davis, cond., with Reŕee Fleming (Hanna), Thomas Hampson (Danilo), and the Lyric Opera Ensemble.
 6/18 **Nabucco** (Verdi). Carlo Rizzi, cond., with Zeljko Lucic (Nabucco), Tatiana Serjan (Abigaille), Elizabeth DeShong (Fenena), and the Lyric Opera Ensemble.
 6/25 **Der Rosenkavalier** (R. Strauss). Edward Gardner, cond., with Amanda Majeski (Marshallin), Sophie Koch (Octavian), Matthew Rose (Ochs), Christina Landshamer (Sophie), and the Lyric Opera Ensemble.

4 pm

NPR All Things Considered

5 pm

A Prairie Home Companion

Garrison Keillor and friends present music, skits, and the latest news from Lake Wobegon. **[Also Sundays at 2 pm]**

7 pm

The Midnight Special

Rich Warren presents folk music and farce, show tunes and satire, traditional and contemporary with gentle irreverence and candid observation.

9 pm

Classics All Night

NPR News Headlines at 10:01

willfm

101.1 and 90.9 HD2

weekdays

6-9 am

Classical Music

9 am-noon

**Classic Mornings
with Vic Di Geronimo**

Join Vic for music and companionship and make each morning a classic morning!

Noon-overnight

**Classical Music;
Monday-Thursday 7-9 pm
The Evening Concert**

**Friday 7-9 pm
Prairie Performances**

(see listings page 4)

Saturdays

7-9 am

Classical Music

9-11 am

Classics by Request

Vincent Trauth plays requests at this time each Saturday. Submit requests at clasreq@illinois.edu or 217-265-5064.

11 am-Noon

**Classics of the
Phonograph**

John Frayne's weekly exploration of memorable recordings from the 20th century. See page 5 for listings.

Noon-overnight

Classical Music

Sundays

all day

Classical Music

7-9 pm

The Evening Concert



Programs on WILL Radio are partially sponsored by a grant from the Illinois Arts Council, a state agency.

sundays

7 am

NPR Weekend Edition

with Rachel Martin

9 am

Sunday Baroque

Garrison Keillor's *The Writer's Almanac*
at 9:01.

1 pm

The Record Shelf

2 pm

A Prairie Home Companion

4 pm

NPR All Things Considered

5 pm

Classical Music

7-8 pm

The Evening Concert

Chamber Music Society of Lincoln Center

6/5 Schubert: Trio No. 1 in B-flat major for Piano, Violin, and Cello, D. 898, Op. 99

Wu Han, piano; Phillip Setzer, violin; David Finckel, cello

6/12 Brahms: Sonata in G major for Violin and Piano

Benjamin Beilman, Violin; Gilbert Kalish, Piano

6/19 Bach: Brandenburg Concerto No. 5 in D major

Tara Helen O'Connor, flute solo; Daniel Phillips, violin solo; John

Gibbons, harpsichord; Ani Kavafian, violin; Mark Holloway, viola;

David Finckel, cello

6/26 Beethoven: Serenade in D major for Flute, Violin, and Viola, Op. 25

Tara Helen O'Connor, Flute; Ida Kavafian, Violin; Daniel Phillips,

Viola; Edgar Meyer, double bass

8-9 pm

The Evening Concert

Santa Fe Chamber Music Series

6/5 CÉSAR FRANCK: Piano Quintet in F Minor, M. 7

Martin Beaver, vln; Benjamin Beilman, vln; Lily Francis, viola;

Clive Greensmith, cello; Kirill Gerstein, piano

6/12 Bedřich Smetana: String Quartet No. 1 in E Minor, "From My

Life" Miami String Quartet

6/19 Mozart: Serenade No. 10 in B-flat Major for Winds, K. 361,

"Gran Partita"; Liang Wang and Robert Ingliss, oboe; et.al.; Alan

Gilbert, conductor

6/26 Franz Schubert: String Quartet No. 13 in A Minor, D. 804,

"Rosamunde"; Dover Quartet

9 pm

Classical Music

10 pm

Harmonia

Angela Mariani presents Baroque and early music.

NPR News Headlines at 10:01.

11 pm

The Romantic Hours

Music, poetry and romance with Mona Golabek.

midnight

Classical Music



Photo: Cory Weaver

▲ Elizabeth DeShong and Sergey Skorokhodov in *Nabucco* at noon Sunday, June 18

| Monday - Friday | | Saturday | Sunday |
|---|----------------|--------------------------------|---------------------------------|
| NPR Morning Edition with Brian Moline | 5:00 | BBC Overnight Continued | BBC World Service |
| | 6:00 | Commodity Week | Inside Europe |
| | 6:30 | State Week in Review | |
| | 7:00 | NPR Weekend Edition | NPR Weekend Edition |
| On Point hosted by Tom Ashbrook | 9:00 | Car Talk | Says You |
| | 10:00 | Wait Wait ... Don't Tell Me | |
| The 21st with Niala Boodhoo | 11:00 | Ask Me Another | Car Talk |
| Illinois Edition with Sean Crawford | Noon | This American Life | Wait, Wait... Don't Tell Me |
| Here & Now | 1:00 | The Moth Radio Hour | The Treatment |
| | 1:30 | | State Week in Review |
| The Closing Market Report | 2:00 | Radiolab | Reveal |
| BBC Business Daily/ Commodity Week (F) | 2:30 | | |
| Fresh Air | 3:00 | TED Radio Hour | On the Media |
| All Things Considered with Jeff Bossert | 4:00 | All Things Considered | All Things Considered |
| | 5:00 | Science Friday | The People's Pharmacy |
| | 6:00 | Big Picture Science | Travel with Rick Steves |
| The 21st (repeat) | 7:00 | Living on Earth | To the Best of Our Knowledge |
| Fresh Air (repeat) | 8:00 | Latino USA | |
| BBC World Service/ Science Friday (F) | 9:00 | Alternative Radio | New Dimensions |
| | 10:00 | Commonwealth Club | Le Show |
| | 11:00 | Left, Right, and Center | BBC World Service |
| | 11:30 | Bookworm | |
| | 12:00- 6 am | BBC World Service | |

Bold Listing = National/International News

Agriculture

Todd Gleason, host, Closing Market Report & Commodity Week

Opening Market Report: 8:50 am; **Market Update:** 10:58; **Midday Market Report:** 12:58 pm; **Closing Market Report:** 2:00 pm. To listen to archived ag reports, sign up for the Illinois Public Media Ag E-newsletter, or download our agricultural podcasts, visit www.willag.org

Illinois Public Media News

Scott Cameron, news and public affairs director

The news from Illinois Public Media's award-winning staff of reporters and producers—Niala Boodhoo, Jeff Bossert, Christine Herman, Jim Meadows, and Brian Moline—can be heard during **Morning Edition**, **The 21st**, **Illinois Edition**, **Here & Now** and **All Things Considered**.

Weather

Monday-Friday

AM: 6:09, 6:20, 6:35, 6:50, 7:09, 7:20, 7:35, 7:50, 8:09, 8:20, 8:35, 8:50 **PM:** 12:37, 4:06, 4:35, 5:06, 5:35

Arts and Crafts—5-6 am; 11 am-noon**Sun and Wed:** Fit 2 Stitch; Scheewe Art Workshop**Mon and Fri:** Fons and Porter's Love of Quilting; Paint This with Jerry Yarnell**Tue and Thu:** Knit and Crochet Now; Best of the Joy of Painting**Cooking—6-8 am; noon-2 pm****Sun and Wed:** Bake Decorate Celebrate/Lucky Chow (begins 6/15); Mexico - One Plate at a Time; Healthful Indian Flavors/The Farm with Ian Knauer (6/5); Jazzy Vegetarian**Mon and Fri:** BBQ with Franklin; Steven Raichlen's Project Smoke; Chef John Besh's New Orleans; Taste the Islands**Tue and Thur:** Cooking with Nick Stellino; P. Allen Smith's Garden to Table; Dining with the Chef; Joanne Weir's Cooking Confidence**Travel—8-9 am; 2-3 pm****Sun and Wed:** Wild Photo Adventures; Journeys in Japan**Mon and Fri:** Grannies on Safari; Joseph Rosendo's Travelscope**Tue and Thu:** Burt Wolf: Travels and Traditions; Travels with Darley**Gardening/Home Improvement—9-11; 3:30-5:30 pm****Mon and Fri:** This Old House; Rough Cut—Woodworking with Tommy Mac; P. Allen Smith's Garden Home; Start Up**Tue and Thu:** Hometown/Woodwright's Shop (begins 6/16); Woodsmith Shop; Victory Garden; In Pursuit of Passion**Wed:** Ask This Old House; American Woodshop; Garden Smart; Beads, Baubles, and Jewels**Sun:** Ask This Old House; American Woodshop; Growing a Greener World; Beads, Baubles, and Jewels**Weekend Marathons—5-11 am; 5-11 pm Saturday; 11 am-5 pm Sunday****June 4/5: Wedded Bliss**

Plan your perfect June wedding

June 11/12: Midwest Swing

Putting the spotlight on great Midwestern food

June 18/19: Men of leisure

This marathon is for the ultimate male weekend warrior.

June 25/26: Outdoor Bites

It's summertime. Let's enjoy cooking outdoors!

See the full Create schedule at will.illinois.edu/tv/schedule**WORLD** Primetime Schedule

12.2

Monday-Friday

9:00 PBS NewsHour

10:00 Nightly Business Report

Mondays

8:00 Local USA

8:30 On Story

10:30 Religion & Ethics NewsWeekly

11:00 National Parks: America's Best Idea

Tuesdays

7:00 America Reframed

8:30 Local USA (6/7); Facing Fear (6/21); Committee (6/28)

10:30 Global 3000

11:00 America Reframed

Wednesdays

7:00 POV: Out in the Night (6/8)

8:00 Frontline (6/1, 6/15, 6/22, 6/29); AfroPop: The Ultimate Cultural Exchange (6/8)

10:30 Focus On Europe

11:00 Unexpected Justice: The Rise of John Paul Stevens (6/1); Anyone and Everyone (6/8); Committee (6/15); Forensics: Beyond the CSI Effect (6/22); POV: The Look of Silence (6/29)

11:30 POV: Of Men and War (6/1); POV: After Tiller (6/15); Independent Lens: Trapped (6/22)

Thursdays

7:00 Genius By Stephen Hawking (6/2); Human Face of Big Data (6/9); Secrets of the Dead (6/16); Nazi Mega Weapons (6/23); 9 Months That Made You (6/30)

8:00 NOVA (6/2); Ted Talks (6/9); Time Scanners (6/16); Nazi Mega Weapons (6/23); Time Scanners (6/30)

10:30 Scully/The World Show

11:00 Genius By Stephen Hawking (6/2); NOVA

Fridays

7:00 Independent Lens: Limited Partnership (6/17); Twice Born-Stories from the Special Delivery Unit (6/24)

7:30 Frontline (6/3); Independent Lens: God Loves Uganda (6/10)

8:00 Independent Lens: Kumu Hina (6/17); Twice Born-Stories from the Special Delivery Unit (6/24)

10:30 Asia Insight

11:00 The Day It Snowed in Miami (6/3); Independent Lens: How to Survive a Plague (6/10); Independent Lens: The New Black (6/17); Twice Born-Stories from the Special Delivery Unit (6/24)

Saturdays

7:00 D-Day 360 (6/4); Operation Maneater (6/11); Paving the Way: The National Park-to-Park Highway (6/18); Great Polar Bear Feast (6/25)

8:00 D-Day: The Price of Freedom (6/4); Operation Maneater (6/11); Paving the Way: The National Park-to-Park Highway (6/18); Operation Maneater (6/25)

9:00 America Reframed

10:30 Unexpected Justice: The Rise of John Paul Stevens (6/4); Local USA (6/11); Facing Fear (6/25)

11:00 D-Day 360 (6/4); Operation Maneater (6/11); Paving the Way: The National Park-to-Park Highway (6/18); The Great Polar Bear Feast (6/25)

Sundays

7:00 Nature

8:00 Secrets of the Dead (6/5); Skeletons of the Sahara (6/12); Heart of the World: Colorado's National Parks (6/19); Greeks (6/26)

9:00 Global Voices

10:00 POV: Web Junkie (6/5); AfroPop: The Ultimate Cultural Exchange (6/12); Big Joy: The Adventures of James Broughton (6/19); The Campaign (6/26)

11:00 Nature

See the full World schedule at will.illinois.edu/tv/schedule

| Monday - Friday | | Saturday | Sunday | |
|---|-------|-----------------------------------|---|----------------------|
| Market to Market (M) Nightly Business Report (T-F) | 5:00 | Thomas & Friends | Sid the Science Kid | |
| Body Electric (M,W,F) Sit and Be Fit (T, Th) | 5:30 | Bob the Builder | Dinosaur Train | |
| Wild Kratts | 6:00 | Daniel Tiger | Sesame Street | |
| Ready Jet Go! | 6:30 | Daniel Tiger | Daniel Tiger | |
| Nature Cat | 7:00 | Curious George | Curious George | |
| Curious George | 7:30 | Nature Cat | Nature Cat | |
| Daniel Tiger's Neighborhood | 8:00 | Ready Jet Go! | Ready Jet Go! | |
| Daniel Tiger's Neighborhood | 8:30 | Wild Kratts | Wild Kratts | |
| Sesame Street | 9:00 | Odd Squad | Odd Squad | |
| Peg + Cat | 9:30 | Arthur | Cyberchase | |
| Dinosaur Train | 10:00 | Motorweek | Charlie Rose: The Week | |
| Dinosaur Train | 10:30 | P. Allen Smith's Garden Home | To the Contrary | |
| Super Why | 11:00 | Mid-American Gardener | America's Heartland | |
| Thomas & Friends | 11:30 | Victory Garden | Market to Market | |
| Sesame Street | Noon | America's Test Kitchen | The McLaughlin Group | |
| Cat in the Hat | 12:30 | Cook's Country | Religion + Ethics Newsweekly | |
| Sewing Programs ▼ | 1:00 | Eat! Drink! Italy! with Vic Rallo | Specials 6/5 11:00 Downton Abbey Season 6 marathon 6/12 1:00 David Holt's State of Music 1:30 Nitty Gritty Dirt Band: 50 Years and Circlin' Back 3:00 Joan Baez 75th Birthday Celebration 5:00 The Highwaymen Live at Nas- sau Coliseum 6:30 Carol Burnett's Favorite Sketches 6/19 1:00 Great Performances at the Met 3:30 Committee 4:00 Big Joy: The Adventures of James Broughton 6/26 1:00 Red Dot on the Ocean: The Matthew Rutherford Story 2:00 Grand Rescue 3:00 Panama Canal: Prized Pos- session 4:00 Panama Canal: Post-Panamax | |
| Painting and How To Programs ▼ | 1:30 | Martha Bakes | | |
| Arthur | 2:00 | Tastes of Louisiana | | |
| Nature Cat | 2:30 | Joanne Weir Gets Fresh | | |
| Ready Jet Go! | 3:00 | Jacques Pepin: Heart + Soul | | |
| Odd Squad | 3:30 | Bare Feet | | |
| Wild Kratts | 4:00 | This Old House Hour | | |
| Word Girl | 4:30 | | | |
| BBC World News | 5:00 | PBS NewsHour Weekend | | PBS NewsHour Weekend |
| Nightly Business Report | 5:30 | Rick Steves' Europe | | SciTech Now |
| PBS NewsHour | 6:00 | Lawrence Welk | Father Brown | |

1:00 pm Sewing

M: Fons & Porter's Love of Quilting
 Tu: Sewing with Nancy
 W: It's Sew Easy
 Th: Quilting Arts
 F: Knit and Crochet Now!

1:30 pm Painting and How To

M: Landscapes Through Time
 Tu: Paint This with Jerry Yarnell
 W: American Woodshop
 Th: Garden Smart
 F: Painting with Wilson Bickford

“Perhaps the end of the beginning”

In **Endeavour**'s Season 2 finale, falsely accused Endeavour Morse was last seen isolated and alone, framed for murder and languishing in prison. Will Endeavour's life get back on track? And does it resemble the life he'd known? Fans will find out as the phenomenally successful crime drama returns at 8 pm Sunday, June 19 with 4 episodes set in 1967. In the words of show creator and writer Russell Lewis, “The only constant is death... and Green Shield Stamps.”

Photo: Courtesy of © ITV for MASTERPIECE

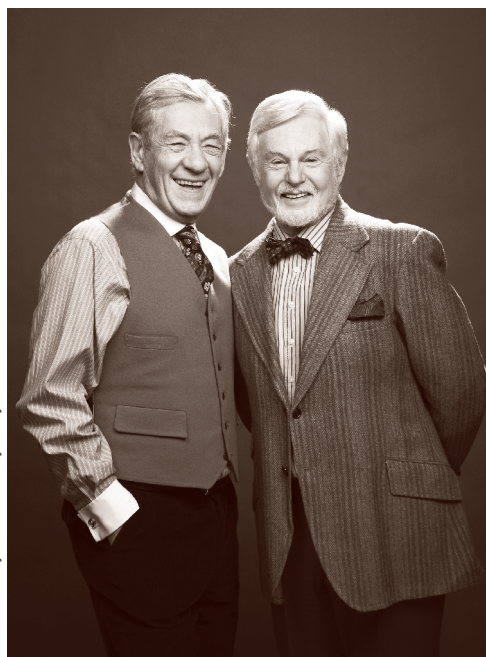
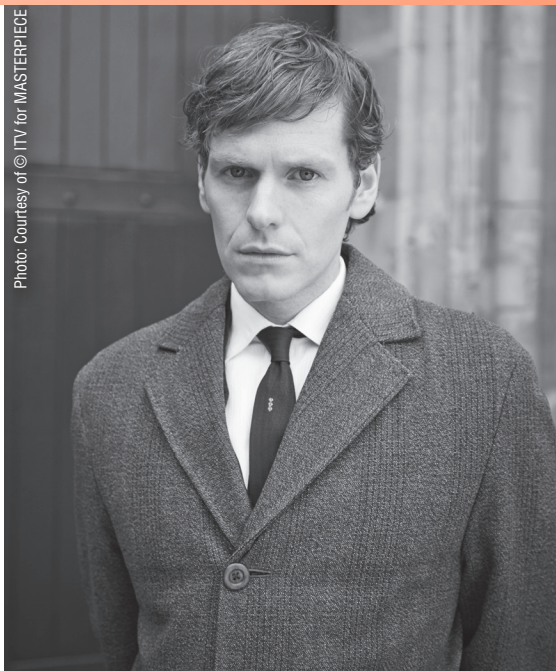


Photo: Courtesy of ITV/Brown Eyed Boy Limited

Photo: Courtesy of Andrew Graham Brown/Renegade Pictures (UK) Ltd



Viciously entertaining

Sir Ian McKellen and Sir Derek Jacobi return for one final episode of **Vicious** at 7 pm Sunday, June 19. The actors portray Freddie and Stuart, a gay couple together for over 50 years. The special will pick up where the Season 2 finale left off, right after the longtime couple were finally married. The finale was filmed in front of a live audience, and the entire cast returned to say farewell to the short-but-sweet series.

And then, we eat!

Investigate the problems facing a unique population of polar bears due to climate change. At the heart is an extraordinary event, **The Great Polar Bear Feast** — the annual gathering of up to 80 polar bears on Barter Island in the Arctic Ocean each September. Usually solitary hunters, the bears return every year to feast on hunted whale remains. The special airs at 7 pm Wednesday, June 22 and explores how climate change has influenced the polar bears' eating habits.

DANCING ON THE EDGE

In early 1930s London, the black jazz group the Louis Lester Band is on the rise. After landing a gig at the Imperial Hotel, countless aristocrats—including the royal family—ask the band to play at parties, catching the eye of the ambitious American businessman Walter Masterson and his enthusiastic employee, Julian. But just as the band's success balloons,



tragedy strikes, setting off a chain of events that may put an end to it all. At 7 pm Sunday, June 26, watch the premiere of **Dancing on the Edge**, an 8-part series.

Photo: Courtesy of Courtesy of Drafthouse Films and Participant Media



Look them in the eye

POV: *The Look of Silence* at 9 pm Monday, June 27 follows a family of survivors from the 1965 Indonesian genocide that has discovered the identities of their son's killers. The documentary focuses on the youngest son, an optometrist named Adi, who decides to do something unimaginable: he confronts the men who killed his brother and, while testing their eyesight, asks them to accept responsibility for their actions. This Oscar-nominated film, directed by Joshua Oppenheimer, was hailed as a "masterpiece" by the New York Times.

Look to the skies



Photos: Courtesy of BBC 2016

Supernature-Wild Flyers is a 3-part series that explores the wonder and science of one of nature's greatest innovations — the power of flight. Cutting-edge camera technology and computer-generated graphics explain airborne animals' remarkable powers. The first episode,



Defying Gravity, airs at 7 pm Wednesday, June 29 and investigates the basic principles of flight to see how animals become airborne. From leapers to gliders and those that effortlessly fly, each creature has special techniques. But all must overcome a powerful force — gravity.

WILL-TV

BritCom Saturday Night

- 8:00 As Time Goes By
- 8:30 Vicar of Dibley
- 9:00 Last of the Summer Wine
- 9:30 Moone Boy
- 10:00 Doctor Who



On pledge drive days with this symbol, program start and end times may vary.

1 Wednesday

- 7:00 **NOVA** (TV-G)
Invisible Universe Revealed. The remarkable story of the Hubble Space Telescope that forever changed our understanding of the cosmos and our place in it. *Repeated midnight; and 4 am 6/3.*
- 8:00 **Genius By Stephen Hawking** (TV-PG)
What Are We? See how self-assembling machines and light-up bacteria revolutionize three people's views of life. *Repeated 1 am 6/2; and 2 am 6/3.*
- 9:00 **Genius By Stephen Hawking** (TV-PG)
Where Are We? Can three ordinary people measure the earth, the solar system and even the universe - and find our true place in the cosmos? *Repeated 2 am 6/2; and 3 am 6/3.*
- 10:00 **Last of the Summer Wine**
- 10:30 **Newsline**
- 11:00 **Charlie Rose**

2 Thursday

- 7:00 **Mid-American Gardener** (TV-G)
- 7:30 **Ask This Old House** (TV-G)
Doorbell, Home Gym, Pipes.
- 8:00 **Doc Martin** (TV-PG)
On The Edge - Part 2. Martin is forced out of the picture when Louisa's dad arrives.
- 9:00 **Father Brown** (TV-PG)
The Resurrectionists. Season 4, episode 8. Father Brown is puzzled when the grave of a recent burial is opened and the body is missing, only for it to turn up at the premises of a different undertaker.
- 10:00 **Last of the Summer Wine**
- 10:30 **Newsline**
- 11:00 **Charlie Rose**

3 Friday

- 7:00 **Washington Week with Gwen Ifill and National Journal**
- 7:30 **Scitech Now**
- 8:00 **Carol Burnett's Favorite Sketches** (TV-G)
See article on page 1. *Repeated 8 pm 6/11; and 6:30 pm 6/12.*
- 9:30 **Pioneers of Television** (TV-PG)
Carol Burnett & The Funny Ladies.
Repeated 2:30 am 6/4; and 3:30 am 6/5.
- 10:00 **Song Stage Illinois**
Episode 8 of 8.
- 10:30 **Illinois Lawmakers**
- 11:00 **Charlie Rose**

4 Saturday

- 8:00 **Great Performances** (TV-G)
Joan Baez 75th Birthday Celebration. See article on page 3. *Repeated 11:30 am 6/4; 8 pm 6/7; 12 am 6/11; and 3 pm 6/12.*
- 10:00 **The Carpenters: Close To You**
A music-filled documentary that traces the Carpenters' career. Includes promotional films, concert performances, and studio recording sessions.
- 11:30 **Great Performances** (TV-G)
Joan Baez 75th Birthday Celebration.

5 Sunday

- 8:00 **Masterpiece Classic** (TV-PG) (DVS)
Downton Abbey. Season 6, episode 9 of 9. *Repeated midnight.*
- 10:00 **BAFTA Celebrates Downton Abbey** (TV-G)
- 11:00 **Tribute to Downton Abbey** (TV-G)

6 Monday

- 7:00 **Timeless Tractors: The Collection**
Learn why these mechanical beasts attract a certain breed of collector — including a father-son restoration project, tractor clubs that show off their restored works of art, and the journeys of men and women seeking that special tractor they worked with as a child. *Repeated _____.*
- 8:30 **Farmher: The Documentary**
The documentary follows seven women farmers from around the country and visits with them about what it's like to be a woman in what is typically thought of as a man's world. *Repeated _____.*
- 10:00 **Last of the Summer Wine**
- 10:30 **Newsline**
- 11:00 **Charlie Rose**

7 Tuesday

- 7:00 **Genealogy Roadshow** (TV-PG)
Our Favorite Stories. Season 3, episode 4 of 7. See article on page 2. *Repeated 4 am 6/9; 12 am 6/10; and 4 am 6/13.*
- 8:00 **The Highwaymen Live at Nassau Coliseum** (TV-G)
See article on page 3. *Repeated _____.*
- 9:30 **The Kingston Trio Celebration** (TV-G)
See article on page 3. *Repeated _____.*
- 10:00 **Last of the Summer Wine**
- 10:30 **Newsline**
- 11:00 **Charlie Rose**

8 Wednesday

- 7:00 **Chicago By Boat: The New River Tour**
- 10:00 **Last of the Summer Wine**
- 10:30 **Newsline**
- 11:00 **Charlie Rose**

9 Thursday

- 7:00 **Mid-American Gardener** (TV-G)
- 8:00 **Doc Martin** (TV-PG)
The Apple Doesn't Fall. Season 3, episode 1. Portwenn has a new police officer.

- 9:00 Doc Martin: Behind The Scenes** (TV-PG)
Go behind the camera and get an inside look at the early episodes of the show.
- 10:00 Last of the Summer Wine**
- 10:30 Newsline**
- 11:00 Charlie Rose**

10 Friday

- 7:00 Washington Week with Gwen Ifill and National Journal**
- 7:30 Nitty Gritty Dirt Band: 50 Years and Circlin' Back** (TV-G)
Celebrate the groundbreaking band's musical milestones and hits along with special guests Vince Gill, John Prine, Jackson Browne, Alison Krauss, Rodney Crowell, Jerry Jeff Walker, Jimmy Ibbotson, Sam Bush, Jerry Douglas and Byron House. *Repeated _____.*
- 9:00 Rhythm and Blues 40: A Soul Spectacular** (TV-G)
This show brings together legendary artists of the 1960s and 1970s for a once-in-a-lifetime event.
- 11:00 Charlie Rose**

11 Saturday

- 8:00 Carol Burnett's Favorite Sketches** (TV-G)
- 9:30 To Be Announced**

12 Sunday

- 8:00 Masterpiece Mystery!** (TV-14) (DVS)
Endeavour. Neverland. Season 2, episode 4. Morse investigates the cases of a missing boy, a dead journalist and an absconder from an open prison, drawing him into a chain reaction of troubling events that could reveal horrors of the past.
- 10:00 Woodsongs** (TV-G)
Elle King / David Wax Museum. Elle King's debut album *Love Stuff* marks the true arrival of the young singer/songwriter/guitarist/banjoist as a pop force to be reckoned with. David Wax Museum's new album *Guesthouse* melds the band's strong acoustic sound with synthesizers, layers of percussion, and adventurous sonic processing to create the band's boldest studio album to date.
- 11:00 Woodsongs** (TV-G)
Charlie Musselwhite/Gill Landry. Charlie Musselwhite is one of the most revered blues musicians in the world. The harmonica master is also a respected singer and songwriter in his own right. Gill Landry is a songwriter and multi-instrumentalist from Louisiana. After cutting his musical teeth busking in New Orleans and chewing up half of America, he started writing on guitar, banjo, pedal steel, and has been a contributing songwriter in Old Crow Medicine Show since 2004.

13 Monday

- 7:00 Antiques Roadshow** (TV-G)
Kansas City, Mo. Part 2 of 3. Highlights include a beauty book, ca. 1928, by entrepreneur Madam C.J. Walker, the first American female millionaire; an 1861 E.G. Wright silver cornet that was played by the owner's great-grandfather when he was part of the 15th Regiment of Indiana; and a 1920 Julian

Onderdonk oil painting. *Repeated midnight; and 7 pm 6/18.*

- 8:00 Antiques Roadshow** (TV-G)
Kansas City, Mo. Part 3 of 3. Highlights include a 1955 Elvis Presley concert poster, with Presley billed at the bottom; an 1812 Marklin 'Puritan' toy boat, used in the family pool and valued at \$20,000; and a 1919 Leon Gaspard Portrait of Young Girl oil. *Repeated 1 am 6/14.*
- 9:00 POV** (TV-14)
After Tiller. Examines the four doctors in the United States still openly performing third-trimester abortions in the wake of the 2009 assassination of Dr. George Tiller in Wichita. Explores the desperate reasons women seek late abortions and presents the complexities of these women's difficult decisions, and the compassion and ethical dilemmas of the doctors and staff who fear for their own lives as they treat their patients. *Repeated 3 am 6/15; and 2 am 6/19.*
- 10:30 Newsline**
- 11:00 Charlie Rose**

14 Tuesday

- 7:00 Genealogy Roadshow** (TV-PG)
Boston. Season 3, episode 5 of 7. Join genealogists at iconic Faneuil Hall to solve mysteries related to the Salem Witch Trials, orphan trains, the Great Boston Fire of 1872, and the small pox epidemic; and research a link to the founders of Boston. *Repeated midnight; 4 am 6/16; and 4 am 6/20.*
- 8:00 The Draft** (TV-PG)
Race, class, culture - the draft in the 1960s and 1970s was a lightning rod that lit up every schism in American society. Featuring interviews with the people who fought the draft, supported it, and lived its realities, the film tells the story of how a single, controversial issue continues to define a nation. Part of PBS Stories of Service. *Repeated 1 am 6/15; 3 am 6/16; and 3 am 6/18.*
- 9:00 Frontline**
Gunned Down. How the NRA uses its unrivaled political power to stop gun regulation in America. *Repeated 2 am 6/15.*
- 10:00 Last of the Summer Wine**
- 10:30 Newsline**
- 11:00 Charlie Rose**

15 Wednesday

- 7:00 Skeletons of the Sahara** (TV-PG)
The story of scientist Paul Sereno's amazing discovery of a prehistoric human burial ground in the middle of the world's most forbidding desert. Hear the story of this find and what it reveals to us about two civilizations that once thrived in what is now the world's largest desert.
- 8:00 NOVA** (TV-PG)
Cyberwar Threat. Delve into the chilling new reality of cyberwar, in which cyber weapons can inflict physical damage on our factories, power plants and pipelines, leaving us vulnerable to crippling attacks.
- 9:00 Ted Talks**
Science and Wonder.
- 10:00 Last of the Summer Wine**

WILL-TV

10:30 **Newsline**
11:00 **Charlie Rose**

16 Thursday

7:00 **Mid-American Gardener** (TV-G)
Repeated 11 am 6/18.

7:30 **Ask This Old House** (TV-G)
Garage Power, Chainsaw Safety.

8:00 **Doc Martin** (TV-PG)
Movement. Season 3, episode 2. Doc's office is inundated with patients with food poisoning.

9:00 **Father Brown** (TV-PG)
The Sins of the Father. Season 4, episode 9. Robert Twyman, a leading aeronautics magnate, receives a note that his son, a piano player and contestant in a local variety show, will be killed if he does not confess. *Repeated 6 pm 6/19.*

10:00 **Last of the Summer Wine**
10:30 **Newsline**
11:00 **Charlie Rose**

17 Friday

7:00 **Washington Week with Gwen Ifill and National Journal**

7:30 **Scitech Now**

8:00 **To Be Announced**

10:00 **Last of the Summer Wine**
10:30 **Newsline**
11:00 **Charlie Rose**

18 Saturday

7:00 **Antiques Roadshow** (TV-G)
Kansas City, Mo. Part 2 of 3.

8:00 **BritCom Saturday Night**
See page 12.

11:00 **Infinity Hall Live** (TV-PG)
America. Grammy winning music group America, led for four decades by Gerry Beckley and Dewey Bunnell, perform their greatest hits.

19 Sunday

7:00 **Vicious Special** (TV-14)
See article on page 10. *Repeated 1 am 6/21.*

8:00 **Masterpiece Mystery!** (TV-PG)
Endeavour. Ride. Season 3, episode 1 of 4. See article on page 10. A fair turns sinister when young Jeannie Hearne is found brutally murdered. Morse isn't part of the investigation; he's suspended from duty, pending an inquiry. When Jeannie's body turns up near his doorstep, he begins his own covert investigation. *Repeated 12:30 am 6/20; and 2 am 6/21.*

9:30 **Tunnel** (TV-14)
Season 1, episode 1 of 10. Inside the Channel Tunnel, on the borderline between Britain and France, the body of a woman is discovered. As the corpse is lifted, it becomes clear that this is no ordinary murder. A thrilling and complex cross-Channel investigation ensues. *Repeated 2 am 6/20; and 3:30 am 6/21.*

10:30 **Woodsongs** (TV-G)
Kinky Friedman/Kacey Jones. Kinky Friedman is a songwriter, musician, author, comedian, philosopher, thinker and politician. Kinky performs songs from his new album *The Loneliest Man I Ever Met.* Kacey Jones is one of America's funniest ladies of song. Her

latest song 'Donald Trump's Hair' is a hysterical song about one of the recent campaign's oddest subjects.

11:30 **Woodsongs** (TV-G)
Iris Dement/Leyla McCalla. The Trackless Woods is Iris Dement's latest original music and melodies. Leyla McCalla is a multi-instrumentalist, both a cellist and singer whose distinctive sound is impossible to replicate.

20 Monday

7:00 **Antiques Roadshow** (TV-G)
Vintage Tucson. Reappraise great finds from Tucson, Ariz. *Repeated midnight; and 7 pm 6/25.*

8:00 **Antiques Roadshow** (TV-G)
Vintage Phoenix. Reappraise great finds from Phoenix, Ariz.

9:00 **Independent Lens** (TV-PG)
Trapped. See article on page 16. *Repeated 3 am 6/22; and 2 am 6/26.*

10:30 **Newsline**
11:00 **Charlie Rose**

21 Tuesday

7:00 **Genealogy Roadshow** (TV-PG)
Providence. Season 3, episode 6 of 7. Join genealogists at the Providence Public Library to research stories about Holocaust survivors; a guest's African-American relative who served in WWI; a man's Amish ties; a woman's roots in the whaling industry; and a Rhode Island macaroni company. *Repeated midnight; 4 am 6/23; and 4 am 6/27.*

8:00 **Greeks** (TV-PG)
Cavemen to Kings. Part 1 of 3. Uncover the first draft of Western civilization, which, though it met a spectacular end, laid the groundwork for the revolution in human thought that was to come. *Repeated 1 am 6/22; 3 am 6/23; and 1 am 6/24.*

9:00 **Frontline**
Being Mortal. Surgeon and writer Atul Gawande examines how doctors struggle to care for terminally ill patients. *Repeated 2 am 6/22; and 1 am 6/26.*

10:00 **Point Taken**
10:30 **Newsline**
11:00 **Charlie Rose**

22 Wednesday

7:00 **Great Polar Bear Feast** (TV-PG)
See article on page 10. *Repeated midnight; and 3 am 6/24.*

8:00 **NOVA** (TV-PG)
Nazi Attack On America. Bob Ballard investigates U-166, a German U-boat that sank in the Gulf of Mexico. *Repeated 1 am 6/23; 4 am 6/24; and 12 am 6/26.*

9:00 **Nazi Mega Weapons** (TV-PG)
Hitler's Killer Subs. In the first years of WWII, Germany crushes its enemies in a series of offensives coined 'Blitzkrieg' or 'Lightning War.' Stuka bombers blast a path through enemy lines, then Panzer divisions cut through defenses. Together they're unstoppable. *Repeated 2 am 6/23; 2 am 6/24; 3 am 6/25; and 3 am 6/27.*

10:00 **Last of the Summer Wine**

10:30 **Newsline**
 11:00 **Charlie Rose**

23 Thursday

7:00 **Mid-American Gardener** (TV-G)
Repeated 11 am 6/25.

7:30 **Ask This Old House** (TV-G)
Driveway Patch, Shaker Table.

8:00 **Doc Martin** (TV-PG)
City Slickers. Season 3, episode 3. The Oakwoods set out to destroy the tranquility of Portwenn.

9:00 **Father Brown** (TV-PG)
The Wrath of Baron Samedi. Season 4, episode 10. Baron Samdi is the voodoo spirit of the dead that Emmanuel Jannite invokes when he follows his love, Yveline Lafond, to Kembelford. *Repeated 6 pm 6/26.*

10:00 **Last of the Summer Wine**
 10:30 **Newsline**
 11:00 **Charlie Rose**

24 Friday

7:00 **Washington Week with Gwen Ifill and National Journal**

7:30 **Scitech Now**

8:00 **To Be Announced**

10:00 **Last of the Summer Wine**
 10:30 **Newsline**
 11:00 **Charlie Rose**

25 Saturday

7:00 **Antiques Roadshow** (TV-G)
Vintage Tucson.

8:00 **BritCom Saturday Night**
 See page 12.

11:00 **Infinity Hall Live** (TV-PG)
Sadie and the Hotheads. Sadie and the Hotheads, fronted by actress Elizabeth McGovern, are a real band whose musicianship combines a world of musical influences, from 60s pop to country, esoteric folk to jazz, Celtic to torch songs. During this concert Infinity Hall Live audiences will delight in McGovern's girlish enthusiasm combined with a rock 'n' roll style that is a world away from her persona as the dignified Lady Cora in *Downton Abbey*.

26 Sunday

7:00 **Dancing on the Edge** (TV-PG)
 Part 1 of 8. See article on page 11. Chart the Louis Lester Band's ascent, with Stanley's help, from a downbeat jazz cellar to the Imperial Hotel and a party attended by an admiring prince and a moneyed American. Later, Louis helps smuggle an injured woman out of a hotel room. *Repeated 1 am 6/28.*

8:00 **Masterpiece Mystery!** (TV-PG)
Endeavour. Arcadia. Season 3, part 2 of 4. The death of an artist in a house-fire leaves Oxford police baffled. Then, when a young housewife dies seemingly of a mysterious 'tummy bug' that has sickened half the police force, Morse's investigation leads him to an inner-city supermarket. *Repeated 12:30 am 6/27; and 2 am 6/28.*

9:30 **Tunnel** (TV-14)
 Season 1, episode 2 of 10. The killer claims

to highlight the ills of contemporary European society as his second 'truth' unfolds. An enigmatic hosteler crosses the paths of Karl and Elise once more. Are they any closer to an answer? *Repeated 2 am 6/27; and 3:30 am 6/28.*

10:30 **Woodsongs** (TV-G)
The Wood Brothers/The Claudettes. Adapting the blues, folk and other roots-music sounds they loved as kids into their own evocative sound and twining their voices in a sort of high-lonesome harmony blend, The Wood Brothers have indeed become the main act. The Claudettes create their own fanatical fusion of blues and soul-jazz-like Ray Charles on a punk kick.

11:30 **Woodsongs** (TV-G)
Celebration of Woodsongs Kids. Every week a talented young performer appears on stage alongside the professional/touring artists.

27 Monday

7:00 **Antiques Roadshow** (TV-G)
Vintage New York. Reappraising great finds from New York. *Repeated midnight; and 4 am 6/29.*

8:00 **Antiques Roadshow** (TV-G)
Vintage Secaucus. Reappraising great finds from Secaucus, NJ.

9:00 **POV** (TV-14)
The Look of Silence. See article on page 11. *Repeated 2 am 6/29.*

11:00 **Charlie Rose**

28 Tuesday

7:00 **Genealogy Roadshow** (TV-PG)
Los Angeles. Season 3, episode 7 of 7. Examine a family's connection to the legendary Hollywood pharmacy, Schwab's; a link to one of the first African-American college graduates; a family tree wrapped in a genealogical web that has captivated the Roadshow team for years; and more. *Repeated midnight; and 4 am 6/30.*

8:00 **Greeks** (TV-PG)
Rise of the Individua. Part 2 of 3. Watch as ancient Greeks strive for excellence, strife proves to be an inescapable certainty, and it's not long before the rising civilization and all that it promises will face its gravest tests. *Repeated 1 am 6/29; and 3 am 6/30.*

9:00 **Frontline**
Policing the Police. Inside the Newark Police Department - one of many troubled forces in America ordered to reform. *Repeated 1 am 7/3.*

10:00 **Point Taken**
 10:30 **Newsline**
 11:00 **Charlie Rose**

29 Wednesday

7:00 **Supernature - Wild Flyers** (TV-G)
Defying Gravity. Part 1 of 3. See article on page 11. *Repeated midnight.*

8:00 **NOVA** (TV-G)
Making North America: Origins. See the epic 3-billion-year story of how our continent came to be. *Repeated 1 am 6/30.*

9:00 **9 Months That Made You** (TV-PG)
The First 8 Weeks. Part 1 of 3. See article

WILL-TV

on page 16. Follow the story of how, from a fertilized egg, you took on human form in the womb. Chart the metamorphosis from the lizard-like, mouse-like and monkey-like forms you once took on until the moment around 12 weeks when you became unmistakably human. *Repeated 2 am 6/30.*

10:00 **Last of the Summer Wine**

10:30 **Newsline**

11:00 **Charlie Rose**

30Thursday

7:00 **Mid-American Gardener (TV-G)**

Repeated _____.

7:30 **Ask This Old House (TV-G)**
Renewable Energy.

8:00 **Doc Martin (TV-PG)**
The Admirer. Season 3, episode 4. Portwenn looks set to become a hotbed of passion.

9:00 **Father Brown (TV-PG)**
The Mask of the Demon. Season 4, episode 1. Father Brown investigates the murder of a B movie director when he comes to film in Kembleford.

10:00 **Last of the Summer Wine**

10:30 **Newsline**

11:00 **Charlie Rose**



280 days

In just 280 days in the womb, you underwent a remarkable transformation: from just a single cell to over 100 trillion. **9 Months That Made You** explores the story of this metamorphosis.

See the very latest scientific understanding and secrets of the hidden transformation that we each underwent in the womb. Everything that happened there had profound effects on the creature you became - the way your cells divided, how they communicated, when hormones surged, even how tiny hairs beat in the womb - all shaped the rest of your life, long before you were even born.

Each episode follows one of the three trimesters, zeroing in on the critical moments: the moment your face forms, the first beat of your heart, or the day your nerves fire their first signals - and uses them as the springboard to wonderful and surprising human stories that show how even a small change in the womb can have life-changing consequences later in life.

The First 8 Weeks

9 pm Wednesday, June 29

One of a Kind

9 pm Wednesday, July 6

The Final Countdown

9 pm Wednesday, July 13



Abortion clinics in the south

Trapped premieres on **Independent Lens** at 9 pm Monday, June 20. The documentary goes to the front lines of the controversial battle currently being waged over so-called TRAP laws — Targeted Regulation of Abortion Providers — which reproductive rights advocates believe are designed to restrict access to abortion. Told through the eyes of doctors, clinic owners, and staff in Alabama and Texas who are fighting to keep their facilities open, the film reveals the impact of hundreds of new laws passed since 2011 that set additional standards and regulations for abortion providers. Proponents of these laws maintain that they are necessary to protect women's health. Opponents believe that the regulations are unnecessary and designed to limit access to abortion. ***Trapped*** also includes interviews with the legal team arguing before the Supreme Court that TRAP laws are designed to undermine and circumvent the right to choose granted under *Roe v. Wade*. The film provides an on-the-ground, up-to-the minute look at the latest battle in America's ongoing struggle over abortion rights.

WILL web series **ART/BTS** wins 2 Telly Awards

Illinois Public Media proudly announces that the second season of our web series **ART/BTS** has received 2 Telly Awards. The Telly Award is the premier award honoring the finest film and video productions, groundbreaking web commercials, videos and films, and outstanding local, regional, and cable TV commercials and programs. **ART/BTS** won a Silver Telly for Videography/Cinematography and a Bronze Telly for Web Series. Congratulations to Tim Meyers, producer/director; Isaac Musgrave, cinematographer/editor; and Ryan Marshall, production assistant, on a job well done!

Check out both seasons of **ART/BTS** at will.illinois.edu/artbts now.



Photo: Sarah Whittington

Isaac Musgrave and Tim Meyers

 **techline**
Functional. By design.



**A master closet project...
ends Superbly!**



307 South Locust, Champaign • 217.352.5570
Mon. – Fri. 9 am to 5 pm • Saturdays by appointment • www.TECHLINE-CU.com

Travel to P. Allen Smith's Garden Home

In its fourth year, the garden tour is a wildly successful fundraiser for Illinois Public Media. For 2016, we invite you to join WILL on a 3-day excursion to Branson, Little Rock, and Memphis. The trip is October 6-8, and features tours of the College of the Ozarks, Meramec Vineyards, Memphis Botanic Gardens, and P. Allen Smith's Garden Home. Prices start at \$748 per person and includes hotels, round trip motor coach, admissions and guided tours, and 6 meals. Find more information at will.illinois.edu/travel. Don't delay to make your reservations, as previous garden tours sold out quickly.

Thursday, October 6

Travel to St. James, Mo., where you will enjoy lunch and a wine tasting at Meramec Vineyards. Continue on to Branson to your hotel, and then visit the College of the Ozarks, where students work in lieu of paying tuition and graduate debt-free. Dinner will be served in the Dobyms Dining Room.

Friday, October 7

Head to P. Allen Smith's Garden Home in Little Rock, Ark. and feast on a luncheon prepared from produce of his farm, followed by a guided tour of his home and gardens as featured on **P. Allen Smith's Garden to Table**. Board the private motor coach to Memphis, Tenn., and enjoy dinner at your leisure.

Saturday, October 8

Drive to Memphis Botanic Gardens and explore its 28 specialty gardens on 96 acres. A box lunch is included to enjoy a picnic amongst the Butterfly or Water Gardens. Depart for home with inspirations for next spring!



**WGLT joins
WILL and WUIS as
a launch partner
for The 21st**

WGLT in Bloomington-Normal has partnered with WILL and Springfield's WUIS to carry **The 21st**, our new statewide radio talk show airing weekdays at 11 am. Scott Cameron, Illinois Public Media's Director of News and Public Affairs, said, "We're thrilled to be launching with great partners like WUIS and WGLT. The show's mission has always been to bring people together through relevant conversations about our state. We look forward to including WGLT's listeners throughout the Bloomington-Normal area in the conversation!"

"The mission of **The 21st** is to set a new standard for conversation in Illinois,"



added Niala Boodhoo, **The 21st** host and executive producer. "We're so excited to have the listeners of WGLT as a part of that, and look forward to connecting with Bloomington-Normal and bringing its people and stories to the rest of our audiences."

WILL's other launch partner, WUIS in Springfield, was announced in January 2016. As part of that partnership, WILL-AM580 also airs Springfield's midday news magazine **Illinois Edition** at 12 pm.



Sullivan, IL

Central Illinois' Premier Professional Theatre
The Little Theatre On The Square

2016 SUMMER SEASON



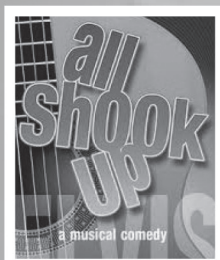
June 1 - 12



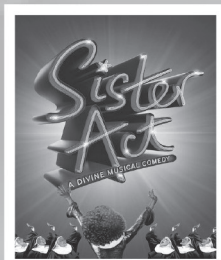
June 15 - 26



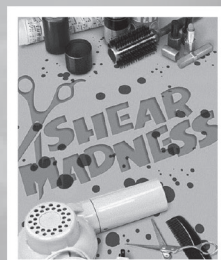
June 29 - July 10



July 13 - 24



July 27 - Aug. 7



Aug. 10 - 28

Tickets \$37.50 Adults/\$35.40 Seniors (62+) & Children (under 13)

Call (217) 728-7375 for tickets or order online at thelittletheatre.org



Photos: Bob Culkeen

52 Friends of WILL traveled to the Driehaus Museum in Chicago on April 24 to experience *Dressing Downton: Changing Fashion for Changing Times*. The tour featured nearly 40 period costumes and jewelry from the hit **Masterpiece Classic** series *Downton Abbey*. Many of the costumes on exhibit were created using original fabrics and embellishments from the early 1900s, while others were recreated from old photographs and magazine pictures from the era. After the tour, guests were treated to a proper English tea with delicious cakes and cookies.

The *Dressing Downton: Changing Fashion for Changing Times* exhibit has been so popular, it was extended at the Driehaus Museum through May 29, despite an original close date of May 8.



Monticello Railway Museum

I-72 at Exit No. 63 (877)762-9011 - www.mrym.org

Trains Run Rain or Shine Saturdays & Sundays

Exhibit Cars - Picnic Grove - Gift Shop

Dads Ride Free With Paid Child Fare on


Fathers Day Weekend June 18-19



Steam Weekend June 11-12

*“Celebrating Our
50th
Anniversary”*



Like us on: 

Thank you, Program Underwriters!

Private support accounts for the largest single source of funds necessary to make Illinois Public Media and the WILL stations great resources for communities across central Illinois. We appreciate the following organizations that have stepped forward to join the individuals and families who support award-winning public media services.

Agribile -Morning Farm Report
AgriGold
Allerton Park Conference Center
Alto Vineyard & Winery
Amasong
Archer Daniels Midland Company
Arends & Sons, Inc.
Asahel Gridley Antique Shop
Auditory Care Center
Bah Humberg Productions, Inc.
Baroque Artists of Champaign-
Urbana/InKind
Bates Commodities
Beckman Institute
Beef House
Big Grove Tavern
Birch Tree Counseling
& Consulting LLC
Breathe Day Spa & Event Center
Busey Bank
Campus Middle School
Carpet Advantage
C-D Overhead Doors Inc
Center for Advanced Study
Central Illinois Antique
Dealers Association
Central Illinois Regional Airport
Champaign Cycle
Champaign Park District/
Virginia Theatre
Champaign-Urbana MTD
Champaign-Urbana Symphony
Charleston Community Theater
Cheese & Crackers
Chorale
Christopher's Fine Jewelry Design
City of Urbana
Clark-Lindsey Village
Columbia Street Roastery
Common Ground Food Co-op
Community Foundation of
East Central Illinois
Community Shares of Illinois
Complete Care Pharmacy
Concierge Magazine
Country Financial
Craft League of
Champaign-Urbana
CU Folk and Roots Festival
CU Woodshop
Danville Gardens
Danville Symphony Orchestra
DTN/The Progressive Farmer
Eastern Rug Gallery
Exceptional Artists
Farm Credit Services of Illinois
Fein-Bursoni, Inc

First Bank (Savoy Division)
Gibson Area Hospital
Global Commodity Analytics
& Consulting LLC
Grain and Feed Association
Great Harvest Bread Company
-INK
Harper Community College
Heath and Vaughn Funeral Home
Heel to Toe
Hendrick House
Illini Pella Windows, Inc.
Illini Union Ballroom
Illinois AgriNews
Illinois Arts Council
Illinois Beef Association
Illinois Corn Growers Association
Illinois Pork Producers Association
Illinois Program for Research in
the Humanities
Illinois Shakespeare Festival
Illinois Symphony Orchestra
Illinois Times
Iowa State University
ISU School of Music
John Phipps Law Offices PC
Karen's Kloset
Krannert Art Museum
Krannert Center for the
Performing Arts
Landscape Recycling Center
Levy Company
Little Theatre on the Square
Makerspace Urbana
McKinley Church and Foundation
Meredith Foundation
Meyer Capel Law Office
Michelle Benson
Mike Weaver Ballroom Dance
Monticello Railway Museum
Natural Gourmet
NU-AG Seeds
Parkland College
Parkland College Theatre
Pars Rug Gallery
Patterson Office Supplies
Paws & Remember
Peoria International Airport
Peoria Symphony Orchestra
Pioneer Hi-Bred
Prairie Farmer Magazine
Prairie Fire Glass
Prairiefire Consulting
Pro-Soil Ag Solutions, Inc.
Radio Maria
Renewal by Andersen
Rental City

Rick Larimore
Risk Management Commodities Inc
River Valley Metro Mass
Transit District
Ruedi Wealth Management
Sangamon Auditorium, UIS
Sew Sassy
Shannon Lee Hayden
Silvercreek/Courier Cafe
Sinfonia da Camera
Sitka Salmon Shares
Smith Moore
Sonified Sustainability Festival
Spiros Law, P.C.
St Joseph Apothecary
Standard Grain, Inc.
Stewart-Peterson Group Inc.
Strategic Farm Marketing Inc
Strawberry Fields
Subaru of Champaign
Susan C. and Lewis D. Hopkins
Endowment
Sweeney Brothers Fine Floorcovering
Symphony Orchestra Guild
of Decatur
Syngenta Crop Protection
Techline
Ten Thousand Villages
That's What She Said Project
The Andersons, Inc.
The Blindman
The Mervis Family Foundation
The Organization for Transformative
Works
These Four Walls
Thomas, Mamer & Haughey
TIAA-CREF Center for Farmland
Research
Todd's Wines at Art Mart
Tom Brewer Gallery
TrophyTime
Twin City Squared
U of I College of Medicine
U of I Department of Engineering
U of I Department of Physics
U of I Library
UI College of Media
UI Global Studies
University Language Academy
for Children
University YMCA
VCA Heritage Animal Hospital
Willard Airport
World Harvest Foods
Wyffels Hybrids
Yoga Institute of Champaign-Urbana



SUMMER

JUNE

8-12

Illinois Theatre Presents
The Sullivan Project: Long Lost
by Donald Margulies

JULY

8

OUTSIDE at the Research Park
PechaKucha Night



krannert center
217.333.6280 • KRANNERTCENTER.COM

AUGUST

13

2016-17 Season Tickets
On Sale

KRANNERT UNCORKED almost every
Thursday from 5pm to 7pm.



COLLEGE OF
FINE & APPLIED
ARTS

MOVING?

Let your public broadcasting membership move with you.

Fill out the form below and send it with your address label to:
Friends of WILL, 300 North Goodwin Avenue, Urbana, IL 61801-2316

Let us know six weeks in advance of moving so that we can make the proper change.

- Check here if you wish to remove your name from our membership list.
- Please update my membership with this new address:

Name _____

Street _____

City _____ State _____ Zip _____

Phone day () _____ evening () _____

Friends of WILL

Campbell Hall for Public Telecommunication
300 North Goodwin Avenue
Urbana, IL 61801-2316

NONPROFIT
ORGANIZATION
U.S. POSTAGE PAID
CHAMPAIGN, IL
PERMIT NO. 453