

Patterns

March 2022

Friends of WILL Membership Magazine



AN EVENING WITH JUDY WOODRUFF

American broadcast legend
featured at virtual event

Tune in for
STATE
of the
UNION
coverage March 1

WILL
100

Illinois Public Media

will **npr** **PBS**

Membership Hotline: 800-898-1065
WILL AM-FM-TV: 217-333-7300
Campbell Hall
300 N. Goodwin Ave., Urbana, IL 61801-2316

Mailing List Exchange

Donor records are proprietary and confidential.
WILL does not sell, rent, or trade its donor lists.

Patterns

Friends of WILL Membership Magazine

Editor & Designer: Doris Dahl

Art Director: Kurt Bielema

Printed by Premier Print Group.



Printed with SOY INK
on RECYCLED,
RECYCLABLE paper.

RADIO

90.9 FM: A mix of classical music and NPR information programs, including local news. (Also with live streaming on will.illinois.edu.)
See pages 4-5.

101.1 FM and 90.9 FM HD2: Locally produced music programs and classical music from C24. (101.1 is available in the Champaign-Urbana area.) *See page 6.*

580 AM: News and information, NPR, BBC, news, agriculture, talk shows. (Also heard on 90.9 FM HD3 with live streaming on will.illinois.edu.) *See page 7.*

TELEVISION

WILL-HD

All your favorite PBS and local programming, in high definition when available. 12.1: Contact your cable or satellite provider for channel information. *See pages 9-16.*

WILL Kids 24/7

Around the clock, award-winning children's programming. 12.2: also available on Comcast and Mediacom.

WILL Create

Cooking, travel, gardening and home improvement, arts and crafts. 12.3: also available on Comcast and Mediacom. *See page 8.*

WILL World

PBS documentaries, news, and public affairs. 12.3: also available on Comcast and Mediacom. *See page 8.*



will.illinois.edu



facebook.com/ILPublicMedia



[@ILPublicMedia](https://twitter.com/ILPublicMedia)



[@ILPublicMedia](https://www.instagram.com/ILPublicMedia)



[@IllinoisPublicMedia](https://www.youtube.com/ILPublicMedia)

Get Aircheck

Video previews, behind-the-scenes information, program schedule updates, and more, delivered every weekend to your email inbox.

will.illinois.edu/aircheck

Patterns

March 2022 Volume XLIX, Number 9



"We only turn 100 once" has become a commonly used phrase in the halls and in meetings here at Illinois Public Media over the past 18 months. And it is true that this is a momentous occasion that will only happen once in our lifetimes. I want everyone to feel empowered to think big, and while not everything is feasible, we have already seen several exciting celebratory projects take shape. One I am particularly excited to share with you is that Illinois Public Media has commissioned a 100th anniversary fanfare. Cue the horns!

From this station's earliest days, a core part of our mission has been to share beautiful music and art with our community, starting with our very own chamber orchestra back in the 1930s, extending to what you know and love about our classical service today. And a fanfare just felt like a fitting addition to our 100th festivities. We're excited to work with local composer Randall Reyman on the piece. He is Millikin University's Director of Jazz and has an impressive resume of classical music and jazz performances.

We will welcome a group of brass musicians — University of Illinois faculty members — into our studio to record the fanfare later this month, and, of course, we will film the whole recording experience to share with you. It is one of many ways we look forward to marking our centennial with all of you over the coming months!

Moss Bresnahan, Executive Director
Twitter: @MossILMedia



Join us for an evening with Judy Woodruff

On Wednesday, March 30, at 7 pm, Illinois Public Media will host a virtual event with Judy Woodruff, anchor and managing editor of **PBS NewsHour**. The event is part of our 100th anniversary celebration as well as part of our Women's History Month programming. Brian Mackey, host of **The 21st**, will interview Woodruff about her career in journalism and how the news has changed in our digital world.

Woodruff has covered politics and other news at NBC, CNN, and PBS in her more than five decades as a broadcast journalist. In 2013, she and the late Gwen Ifill made history as the first two women to co-anchor a national news broadcast.

Woodruff has covered every presidential election and convention since 1976 and has moderated several U.S. presidential debates. She was one of the founding members of the International Women's Media Foundation.

While this event will be open to the public, current Friends of WILL get first access to register. A registration email will be sent out the first week in March. For more information, or to make sure you are on our list, email will-membership@illinois.edu or call 800-898-1065.

Coverage of the State of the Union address



On Tuesday, March 1, you can also join Judy Woodruff and the rest of the **PBS NewsHour** team on WILL-TV or via the PBS Video app for extended special coverage of President Biden's State of the Union address. We also will have live coverage from NPR on WILL-AM and streaming online at will.illinois.edu.

Indigenous women honor those missing, murdered

Bring Her Home tells the story of three Indigenous women fighting to vindicate and honor their missing and murdered relatives. An activist, an artist, and a politician each strive to find healing and hope for themselves and for their Native community. The film laces together the women's stories as they strive for awareness of an epidemic that leaves the loved ones of murdered and missing Indigenous women yearning for answers. Within the framework of marching at the Missing and Murdered Indigenous Women's Rally and March, an annual community event honoring missing Native women, the film tells the stories of how these women have brought attention to the crisis while also providing encouragement to their communities. **Bring Her Home** airs 9 pm Monday, March 21.



Becoming the first female conductor



Great Performances The Conductor follows Marin Alsop's journey to become the first female music director of a major symphony, despite repeated rejection by the classical music industry. Alsop's career is featured, including archival footage with her mentor Leonard Bernstein, set to a soundtrack of her performances. **The Conductor** airs on **Great Performances** at 8 pm Friday, March 25.

Female directors inspire, uplift

Seeing Is Believing: Women Direct focuses on inspiring and uplifting young female storytellers through the mentorship and leadership of four diverse directors. The documentary emphasizes the opportunity for women to use their voice through media to change the social and political landscape and achieve full equality. The film provides a space to discuss "What is the broader role of storytelling in our society and how can women use filmed media as a unique opportunity to catalyze progress?" Featuring important insights from male- and female-identifying filmmakers, their experiences show how collaboration, rather than oppression, can incentivize all genders to connect to our shared human experience. **Seeing is Believing: Women Direct** airs 9:30 pm Friday, March 25.



willam580 SPECIALS

Our Sunday 8 pm programming slot on WILL-AM is dedicated to bringing you radio specials that meet the moment, celebrate our history, and open our eyes and ears to new perspectives. In honor of Women's History Month, we have curated a special lineup of programs we think you will enjoy.

March 6: *Women's History Month*

This special hourlong edition of **Witness History** from the BBC World Service features remarkable stories of women's history, told by the women who were there. Selected from the BBC's **Witness History** program, we hear moving, inspiring, and even outrageous stories about a few of the most important women in living memory.

March 13: *Homeward Sound: The Lives of Women Composers*

An hour dedicated to the lives of women composers from the 17th century through the present day with a focus on their personal lives, their struggles, and what they devoted their lives to beyond music.

March 20: *Rethinking Assumptions: The Quest for Gender Equality in east central Illinois*

A radio documentary created by University High School students looks at how the fight for gender equity took place in central Illinois. The program features interviews with 13 women and two men who discuss how the struggle for gender equity has left an imprint on their lives. Students in the class of 2012 conducted the interviews.

March 27: *Higher Ground*

Climate change is already here in America's first suburb — Long Island. **Higher Ground** tells the stories of communities on Long Island preparing and adapting to extreme weather and rising tides. Produced by station partner WSHU Public Radio.

Social justice and women's experiences

In observance of Women's History Month, we would like to direct our readers to our digital Social Justice Learning space, specifically a former lesson that explores the experiences of women and the effects of sexism, which is prejudice or discrimination against an individual based on perceived gender. You can find resources around "The Experiences of Women in America" online at go.illinois.edu/SJLsexism.

This learning space explores what it means to be a woman in America, celebrating their influence, experiences, contributions, leadership, and accomplishments. From the everyday experiences of mothers, daughters, and friends, to the national impacts of notable women, we hope everyone can gain a better understanding of what being a woman in America means, and how their lasting impacts are visible all around us.

The goal of this initiative is to help us all gain a better understanding of others' experiences with the hopes of achieving a more equitable and quality society for all peoples, while also meeting their needs. The learning space provides resources (read, watch, and listen) for children, adolescents, and adults.



WEEKDAYS

6 am

NPR Morning Edition

with Leila Fadel, Steve Inskeep, Rachel Martin, and A Martinez

9 am

Classic Mornings with Vic Di Geronimo

Join Vic for music and companionship and make each morning a classic morning!

Noon

Afternoon Classics

NPR News Headlines at 12:01, 1:01, and 3:01.

5 pm

NPR All Things Considered

with Ailsa Chang, Mary Louise Kelly, and Ari Shapiro

6 pm Monday-Thursday

The 21st

with Brian Mackey

7 pm

The Evening Concert

Great performances from the great concert venues. Also on Sundays from 7-9. Listings are subject to change.

Monday:

The New York Philharmonic This Week

- 3/7 **Soloists of the New York Philharmonic**
Copland: Clarinet Concerto
Anthony McGill, clarinet
Mozart: Flute Concerto No. 2
Robert Langevin, flute
- 3/14 **Xian Zhang Conducts Haydn and Sibelius**
Haydn: Symphony No. 95 in C minor
Martinů: Incantation, Piano Concerto No. 4
Garrick Ohlsson, piano
Sibelius: Symphony No. 1 in E minor
- 3/21 **An All-Shostakovich Program**
Shostakovich: Symphony No. 6 in B minor
Shostakovich: Piano Concerto No. 2 in F Major
Helen Huang, piano
Shostakovich: Symphony No. 14 in G minor
- 3/28 **William Grant Still, Bartók, and Tchaikovsky**
Bartók: Piano Concerto No. 3 in E Major
Philippe Entremont, piano
William Grant Still: Old California
Tchaikovsky: Symphony No. 6 in B minor

Tuesday:

Chicago Symphony Orchestra

- 3/1 **Muti Conducts Beethoven's 3rd**
Bizet: Roma
Price: Andante moderato
Beethoven: Symphony No. 3 in E-flat Major
- 3/8 **Duain Wolfe and the Chicago Symphony Chorus**
Poulenc: Gloria
Handel: Three Coronation Anthems
Stravinsky: Symphony of Psalms
- 3/15 **Solti Conducts Berlioz, Weber, et.al.**
Berlioz: Overture to Les Francs-juges, Op. 3
Weber: Overture to Oberon
Del Tredici: Final Alice
- 3/22 **Muti and De Maistre**
Chabrier: España
Ginastera: Harp Concerto
Xavier De Maistre, harp

- 3/29 **Muti Conducts Beethoven and Gershwin**
Vivaldi: Piccolo Concerto in C Major, RV 444
Beethoven: Symphony No. 2 in D Major
Gershwin: An American in Paris

Wednesday:

Pittsburgh Symphony Orchestra

- 3/2 **Ax Plays Beethoven's Emperor Concerto**
Beethoven: Piano Concerto No. 5, Emperor
Emanuel Ax, piano
Berlioz: Te Deum
- 3/9 **Haydn's Mass in a Time of War**
Haydn: Mass in a Time of War
Rachele Gilmore, soprano
Corrie Stallings, mezzo-soprano
Paul Appleby, tenor
- 3/16 **Shostakovich's Cello Concerto No. 1**
Rimsky-Korsakov: Capriccio Espagnol
Shostakovich: Cello Concerto No. 1
Maximilian Hornung, cello
- 3/23 **Handel's Messiah**
Handel: Messiah
Rachele Gilmore, soprano; Andrey Nemzer, counter tenor; Werner Gura, tenor
- 3/30 **A Viennese New Year's Concert**
Suppe: Overture to Light Cavalry
Strauss Jr.: Emperor Waltzes, Op. 37
Lehar: Gold and Silver Waltz, Op. 79

Thursday:

This Week from China's National Centre for the Performing Arts

- 3/3 Beethoven: Egmont, Op. 84
Zhao Jiping: Concerto for Cello and Orchestra in D Minor, The Disillusioned Dream
Li-Wei Qin, cello; NCPA Orchestra
- 3/10 Beethoven: Symphony No. 1 in C Major
Lü Jia, conductor; NCPA Orchestra
Chen Gang: Violin Concerto: The Butterfly Lovers. Siqing Lu, violin; NCPA Orchestra
- 3/17 Zhao Jiping: Violin Concerto No. 1
Ning Feng, violin; NCPA Orchestra
Beethoven: Piano Concerto No. 5
Lang Lang, piano; NCPA Orchestra
- 3/24 Chen Qigang: Jiang Tcheng Tse for Peking Opera Style Female Singer, Mixed Chorus and Symphony Orchestra
Schubert: Symphony No. 9 in C Major, D. 944
- 3/31 Xu Changjun: Dragon Dance for Percussion Instruments and Orchestra
Beethoven: Symphony No. 9 in D Minor
NCPA Orchestra & Chorus

Friday:

Prairie Performances

Roger Cooper presents concerts from around central Illinois. Join us as we revisit some of our favorite performances from the archives.

9 pm

Night Music

Andrea Blain, Scott Blankenship, and Steve Seel keep you company through the night and into the morning. **NPR News Headlines** at 9:01.

SATURDAYS

7 am

NPR Weekend Edition

with Scott Simon

9 am

Classics By Request

Submit requests to Vincent Trauth at classreq@illinois.edu or leave a message at 217-265-5064.

11 am**Classics of the Phonograph**

John Frayne's weekly exploration of memorable recordings from the 20th century.

- 3/5 **6,000 Women Composers? Famous Women Composers**
- 3/12 **Experimental Composers of the Roaring 1920s**
- 3/19 **Violin Concertos of Max Bruch**
- 3/26 **Record Labels: The Musical Heritage Society**

Noon**Afternoon at the Opera**

- 3/5 **Listener's Choice:** The Daughter of the Regiment (in French), (Donizetti). Richard Bonyngue, cond. with Joan Sutherland (Marie), Regina Resnick (Marquise of Berkenfield), Luciano Pavarotti (Tonio), Fernando Corena (Sulpice) and the Met Ensemble. (Performance from January 6, 1973).
- 3/12 **Ariadne auf Naxos** (R. Strauss). Marek Janowski, cond., with Lise Davidsen (Ariadne), Brandon Jovanovich (Bacchus), Brenda Rae (Zerbinetta), Isabel Leonard (Composer), and the Met Ensemble.
- 3/19 **Rodelinda** (Handel). Harry Bicket, cond., with Elza van den Heever (Rodelinda), Iestyn Davies (Bertarido), Paul Appleby (Grimoaldo), Jamie Barton (Eduige), and the Met Ensemble.
- 3/26 **Don Carlo** (In French), (Verdi). Yannick Nézet-Séguin, cond., with Matthew Polenzani (Don Carlo), Sonya Yoncheva (Elizabeth), Eric Owens (Philip), Elina Garanča (Eboli), Étienne Dupuis (Rodrigo), John Relyea (Grand Inquisitor), and the Met Ensemble.

4 pm**NPR All Things Considered**

with Michel Martin

5 pm**Performance Today Weekend**

Host Fred Child presents a two-hour weekly program that features classical music in concert from American Public Media studios and sites across the nation and around the world, as well as classical music news, interviews, and features. **[Also Sundays at 2 pm]**

7 pm**The Midnight Special**

Marilyn Rea Beyer offers listeners a lively potpourri of folk, Celtic and bluegrass, show and novelty tunes, and hilarious comedy routines.

9 pm**American Parlor Songbook**

JP Houston and Julie Van Dusen feature clever songs, charming stories, and hilarious sketches every week.

NPR News Headlines at 9:01.

10 pm**Jazz Night In America**

with Christian McBride

11 pm**Atomic Age Cocktail Party**

with Jason Croft

- 3/5 **Ladies of Lounge**
Some of my favorite female singers from the hi-fi era.
- 3/12 **Outrageous Organs**
A look at some of the wild and cool organ music put out in the 1950s and 1960s.
- 3/19 **In Orbit**
Music that heads out to the stars!
- 3/26 **Musical Colors**
A full spectrum show where all the songs have colors in their titles.

midnight**Classics All Night**

SUNDAYS

7 am**NPR Weekend Edition**

9 am**Sunday Baroque**

Hosted by Suzanne Bona. **NPR News Headlines** at 9:01 and 10:01.

1 pm**The Record Shelf**

2 pm**Performance Today Weekend**

4 pm**NPR All Things Considered**

with Michel Martin

5 pm**Classical Music**

7-8 pm**The Evening Concert****Sunday:****The Chamber Music Society of Lincoln Center**

- 3/6 **Russian Romantics**
Arensky: Suite No. 1 for Two Pianos, Op. 15
Michael Brown, Piano I; Orion Weiss, Piano II
Taneyev: Quintet in G minor for Piano, Two Violins, Viola, and Cello, Op. 30
- 3/13 **Archive Treasures III**
Beethoven: Trio in B-flat major for Clarinet, Cello and Piano, Op. 11
Smetana: Piano Trio in G minor
Golub-Kaplan-Carr Trio
- 3/20 **Classical Dawn**
Mozart: Violin Sonata in C major, K. 296
Mozart: Flute Sonata in F major, K. 13
Haydn: String Quartet in C major, Hob. III:32, Op. 20, No. 2. Orion String Quartet
- 3/27 **Delightful Discoveries**
Tansman: Septet for Flute, Oboe, Clarinet, Bassoon, Trumpet, Viola and Cello
Bowen: Phantasy for Viola and Piano, Op. 54
Widmann: Jagdquartett for Strings

willfm

101.1 and 90.9-HD2

WEEKDAYS

6–9 am

Classical Music

9 am–noon

**Classic Mornings
with Vic Di Geronimo**

Join Vic for music and companionship and make each morning a classic morning!

Noon–overnight

Classical Music

Friday 7–9 pm

Prairie Performances

Roger Cooper presents regional concerts from the WILL listening area.

SATURDAYS

7–9 am

Classical Music

9–11 am

Classics by Request

Vincent Trauth plays requests at this time each Saturday. Submit requests at classreq@illinois.edu or leave a message at 217-265-5064.

11 am–noon

Classics of the Phonograph

John Frayne's weekly exploration of memorable recordings from the 20th century. See page 5 for listings.

Noon–overnight

Classical Music

SUNDAYS

All day

Classical Music



ILLINOIS
ARTS
COUNCIL
AGENCY

Programs on WILL Radio are partially sponsored by a grant from the Illinois Arts Council, a state agency.

8–9 pm

The Evening Concert

Fiesta! With Elbio Barilari

3/6 **18th Century Latino Jewels**

Colonial Latin American music is one of the hidden treasures of classical music. It's baroque and classical music that is as powerful and beautiful as what was coming from Europe at the time.

3/13 **The Music of José Pablo Moncayo**

The author of the very popular Huapango, considered as the second Mexican anthem, also composed symphonic works and chamber pieces of great importance.

3/20 **Segovia and his Disciples**

Andrés Segovia is one of the greatest modern guitarists. His style and techniques have elevated the classical guitar to new heights. His disciples include John Williams and Julian Bream.

3/27 **Violin Virtuosos**

Featured on this program are composers Jose White from Cuba, Gustavo Campa from Mexico, and Chevalier de Saint-Georges from the island of Guadeloupe.

9 pm

Jazz Night In America

with Christian McBride

10 pm

Atomic Age Cocktail Party

with Jason Croft

See Saturday at 11 pm

11 pm

Harmonia

Angela Mariani presents Baroque and early music.

NPR News Headlines at 11:01

midnight

The Romantic Hours

Music, poetry, and romance with Mona Golabek.

overnight

Classical Music



Anthony McGill, principal clarinetist and The Edna and W. Van Alan Clark Chair, is featured in ***Soloists of the New York Philharmonic*** on **The Evening Concert** airing at 7 pm Monday, March 7.

Monday - Friday			Saturday	Sunday
NPR Morning Edition with Brian Moline		5:00	BBC Overnight continued	BBC World Service
		6:00	Commodity Week	Inside Europe
		6:30	State Week in Review	
		7:00	NPR Weekend Edition	NPR Weekend Edition
1A		9:00	The Splendid Table	It's Been A Minute with Sam Sanders
		10:00	Wait Wait ... Don't Tell Me	
The 21st	Statewide (F)	11:00	Says You	Code Switch/Life Kit
Here & Now with Jason Croft		Noon	This American Life	Wait Wait ... Don't Tell Me
		1:00	The Moth Radio Hour	The Treatment
		1:30		State Week in Review
The Closing Market Report		2:00	Radiolab	Reveal
BBC Newshour	Commodity Week (F)	2:30		
Fresh Air		3:00	TED Radio Hour	On the Media
All Things Considered with Steve Morck		4:00	All Things Considered	All Things Considered
		5:00	Hidden Brain	People's Pharmacy
		6:00	Big Picture Science	Travel with Rick Steves
The 21st (repeat)	Statewide (F) (repeat)	7:00	Living on Earth	Throughline
Fresh Air (repeat)	Science Friday (F)	8:00	Latino USA	Special Programming (see page 3)
BBC World Service	Fresh Air (F) (repeat)	9:00	Alternative Radio	To the Best of Our Knowledge
		10:00	Science Friday (repeat)	
		11:00	Left, Right, and Center	Le Show
		12:00- 5 am	BBC World Service	BBC World Service

Bold Listing = National/International News



AGRICULTURE

Todd Gleason, host, Closing Market Report & Commodity Week

Opening Market Report: 8:55 am; **Market Update:** 10:58 am; **Midday Market Report:** 12:58; **Closing Market Report:** 2:06. **Fridays: Commodity Week:** 2:30; **Grain Market Summary:** 4:32.
To listen to archived Ag reports, sign up for the Illinois Public Media Ag E-newsletter, or download our agricultural podcasts. Visit www.willag.org.



ILLINOIS PUBLIC MEDIA NEWS

Reginald Hardwick, news and public affairs director, Illinois Public Media

The news from Illinois Public Media's award-winning staff of reporters, hosts, and producers — Anna Casey, Jason Croft, Dana Cronin, Emily Hays, Brian Mackey, Jim Meadows, Brian Moline, Steve Morck, and Tinisha Spain — can be heard during **Morning Edition**, **The 21st**, **Here & Now**, and **All Things Considered**.



WEATHER

Monday-Friday

Weather forecasts from meteorologist Andrew Pritchard throughout the day.

5-6 am**Mon:** Legacy List with Matt Paxton**Tue:** J. Schwanke's Life in Bloom; Growing Bolder, Make 48 (3/15)**Wed:** Make it Artsy; Modern Pioneering with Georgia Pellegrini, Urban Conversion (3/23)**Thu:** Start Up; Conscious Living**Fri:** For Your Home, My World Too (3/18); Family Plot**Sat:** Classical Stretch; Happy Yoga**Sun:** Classical Stretch; Classical Stretch**6-7 am****Mon and Fri:** Best of Sewing with Nancy;

Paint This with Jerry Yarnell

Tue: Quilting Arts; Painting and Travel with Roger & Sarah Bansemer**Wed:** Knit and Crochet Now; Painting with W. Bickford**Thu:** Quilting Arts; Painting with Paulson**Sat:** Fons & Porter's Love of Quilting; Landscapes Through Time (Dunlop), Pocket Sketching (Macaulay) (3/26)**Sun:** It's Sew Easy; Art of a Cowboy**7-8 am****Mon and Fri:** This Old House; Ask This Old House**Tue and Thu:** Craftsman's Legacy; Woodsmith Shop**Wed:** American Woodshop; Garage with Steve Butler**Sat:** Ask This Old House; This Old House**Sun:** Classical Stretch; Classical Stretch**8-9 am****Mon:** Dining with The Chef; Fit To Eat**Tue:** Ciao Italia; Lidia's Kitchen**Wed and Fri:** Chef's Life; America's Test Kitchen**Thu:** Ciao Italia, Bringing it Home with L. McIntosh (3/31); Christopher Kimball's Milk Street Television**Sat:** P. Allen Smith's Garden Home; Growing a Greener World**Sun:** Ellie's Real Good Food; The Jazzy Vegetarian, Christina Cooks (3/20)**9-10 am****Mon:** Let's Go Minnesota, Discover the Upper Cumberland; Weekends with Yankee**Tue:** Fly Brother with Ernest White II, At One With Nature: National Parks of Japan (3/8); Travelscope**Wed:** Burt Wolf; Travels with Darley**Thu:** Central Florida Roadtrip; Travelscope**Fri:** Cycle Around Japan; Samantha Brown's Places to Love**Sun:** Trails to Oishii Toyko; Journeys in Japan**10-11 am****Mon-Fri:** Rick Steves' Europe; Best of the Joy of Painting**Sun:** J. Schwanke's Life in Bloom; Garden Smart**WEEKEND MARATHONS**

9 am-2 Saturday; 11 am-4 Sunday

March 5-6: Essential Pepin; Pepin: Heart & Soul**March 12-13:** Ireland: County by County**March 19-20:** Julia Child programs**March 26-27:** Ask This Old House**Monday-Friday****9:00** PBS NewsHour**10:00** The Day**10:30** BBC World News**Mondays****7:00** 3/7 Experimental Curator: The Sally Dixon Story; 3/14 Women Outward Bound; 3/21 Independent Lens: 9to5: The Story of a Movement; 3/28 POV: Through The Night**8:00** Life on the Line: 3/7 The Hidden Pandemic; 3/14 Still the Calling**8:30** Stories from the Stage: 3/7 Women Stories; 3/14 Perfect Storm; 3/21 Unexpected; 3/28 Above and Beyond**11:00** 3/7 Aldwyth: Fully Assembled; 3/14 Pacific Heartbeat; 3/21 Independent Lens: A Woman's Work: The NFL's Cheerleader Problem; 3/28 Roadtrip Nation: A Single Mom's Story**Tuesdays****8:00** Human: 3/1 React; 3/8 Pulse; 3/15 Fuel; 3/22 Defend; 3/29 Sense**8:30** 3/3 Amazing Grace**11:00** Nova: 3/1 Augmented; 3/8 Mysteries of Sleep; 3/15 The Truth About Fat; 3/22 Looking for Life On Mars; 3/29 Secret Mind of Slime**Wednesdays****8:00** Independent Lens: 3/2 Decade of Fire; 3/9 The Interpreters; Frontline: 3/16, 3/30**11:00** 3/2 Kea's Ark; 3/9 Reel South Santuario; 3/16 POV Shorts: Familial Healing; 3/23 POV Shorts: Water Warriors; 3/30 Charlotte Mansfield: A Woman Photographer Goes To War**11:30** 3/2 POV: Unapologetic; 3/9 Independent Lens: Women in Blue; 3/16 Independent Lens: Accept the Call; 3/23 Bring Her Home; 3/30 Independent Lens: Writing with Fire**Thursdays****7:00** America ReFramed: 3/3 For the Love of Rutland, 3/10 Sisters Rising, 3/17 Busy Inside, 3/24 Finding Kukan**8:00** 3/10 Reel South: Fiesta Quinceanera; 3/17 Her Voice Carries; 3/24 Massacre River: The Woman Without a Country**11:00** America ReFramed: 3/3 For the Love of Rutland, 3/10 Sisters Rising, 3/17 Busy Inside, 3/24 Finding Kukan**Fridays****7:00** 3/4 Queen Elizabeth's Secret Agents; 3/11 Secrets of the Six Wives; 3/18 The Vote: American Experience, Part 1; 3/25 The Vote: American Experience, Part 3**8:00** 3/4 Queen Elizabeth's Secret Agents ; 3/11 Secrets of the Six Wives; 3/18 The Vote: American Experience, \ Part 2; 3/25 The Vote: American Experience, Part 4**11:00** 3/4 Queen Elizabeth's Secret Agents ; 3/11 Secrets of the Six Wives; 3/18 Unladylike2020: American Masters; 3/25 By One Vote: Woman Suffrage in the South**Saturdays****7:00** 3/5 POV: American Revolutionary: The Evolution of Grace Lee Boggs; 3/12 Independent Lens: Dolores; 3/19 American Masters Amy Tan: Unintended Memoir; 3/26 American Masters: How It Feels to Be Free**8:30** 3/5 Perfect 36: When Women Won the Vote**9:00** America ReFramed: 3/5, For the Love of Rutland;

3/12 Sisters Rising; 3/19 Busy Inside; 3/29 Finding Kukan\

10:00 3/12 Reel South: Fiesta Quinceanera; 3/19 Her Voice Carries; 3/26 Massacre River: The Woman Without a Country**10:30** 3/5 Amazing Grace**11:00** 3/5 POV: American Revolutionary: The Evolution of Grace Lee Boggs; 3/12 Independent Lens: Dolores; 3/19 American Masters Amy Tan: Unintended Memoir; 3/26 American Masters: How It Feels to Be Free**Sundays****7:00** 3/6 Nature Bears; 3/13 Nature Australian Bushfire Rescue; 3/20 Nature Pandas: Born to Be Wild; 3/27 Nature Sex, Lies and Butterflies**8:00** Finding Your Roots: 3/6 Reporting on the Reporters; 3/13 Secrets & Lies; 3/20 On Broadway; 3/27 Hollywood Royalty**9:00** 3/6, 3/13, 3/20 Eyes on the Prize**10:00** 3/6, 3/13, 3/20 Eyes on the Prize**10:30** 3/27 POV Shorts**11:00** Nature: 3/6 Bears, 3/13 Australian Bushfire Rescue, 3/30 Pandas: Born to be Wild, 3/27 Sex, Lies and Butterflies

Monday - Friday		Saturday	Sunday
Newsline	5:00	Mister Rogers' Neighborhood	Mister Rogers' Neighborhood
Classical Stretch (M,W,F) Sit and Be Fit (T, Th)	5:30	Arthur	Arthur
Molly of Denali	6:00	Molly of Denali	Molly of Denali
Wild Kratts	6:30	Wild Kratts	Wild Kratts
Hero Elementary	7:00	Hero Elementary	Hero Elementary
Alma's Way	7:30	Xavier Riddle and the Secret Museum	Xavier Riddle and the Secret Museum
Curious George	8:00	Curious George	Curious George
Daniel Tiger's Neighborhood	8:30	Daniel Tiger's Neighborhood	Daniel Tiger's Neighborhood
Donkey Hodie	9:00	Donkey Hodie	Donkey Hodie
Elinor Wonders Why	9:30	Elinor Wonders Why	Elinor Wonders Why
Sesame Street	10:00	Motorweek	Consuelo Mack WealthTrack
Pinkalicious & Peterrific	10:30	Garden Smart	To the Contrary with Bonnie Erbe
Let's Learn	11:00	Mid-American Gardener	Firing Line with Margaret Hoover
	11:30	Ireland with Michael	Market to Market
Sesame Street	Noon	America's Test Kitchen	3/6 11:00 Chopra: Path to Enlightenment 1:00 Easy Yoga for Diabetes 2:00 Suze Orman's Ultimate Retirement Guide 4:00 World of Wisdom & Wonder 5:00 PBS NewsHour Weekend 5:30 20 Things to Do In Midsomer ... Before You Die 3/13 11:00 Best of WILL 3/20 Noon L. Worsley's Royal Photo Album 1:00 Royal Wives at War 2:00 Shakespeare & Hathaway: Pl's 3:00 Amelia Earhart: American Experience 4:00 Beyond The Powder: The Legacy of the First Women's Cross-Country Air Race 5:00 PBS NewsHour Weekend 5:30 Midsomer Murders 3/27 12:00 Call The Midwife 1:00 Sanditon on MASTERPIECE 2:00 Shakespeare & Hathaway: Pl's 3:00 Mary Tyler Moore: A Celebration 4:00 Betty White: First Lady of Television 5:00 PBS NewsHour Weekend 5:30 Midsomer Murders
Donkey Hodie	12:30	Cook's Country	
Daniel Tiger's Neighborhood	1:00	Christopher Kimball's Milk Street Television	
Let's Go Luna	1:30	Pati's Mexican Table	
Nature Cat	2:00	Kevin Belton's Cookin' Louisiana	
Wild Kratts	2:30	Roadfood	
Alma's Way	3:00	Lidia's Kitchen	
Xavier Riddle and the Secret Museum	3:30	Samantha Brown Places to Love	
Odd Squad	4:00	This Old House	
Arthur	4:30	Ask This Old House	
DW News	5:00	PBS NewsHour Weekend	
BBC World News	5:30	Rick Steves' Europe	
PBS NewsHour	6:00	Antiques Roadshow	

WILL Kids 24/7 on 12.2

For the full WILL Kids 24/7 schedule, go to www.illinois.edu/tv/schedule



See the full Create & World schedules at will.illinois.edu/tv/schedule

Secrets of Ireland's Burren revealed

In the countryside of County Clare, Ireland, is the Burren, a mysterious place unlike anywhere else, with deep caves, a stony landscape, and ancient dolmens, ring forts, and castles. This two-part documentary series **Burren: Heart of Stone**, narrated by award-winning Irish actor Brendan Gleeson, unveils the secrets hidden in the stones of this dramatic wind-swept countryside.

Burren: Heart of Stone airs at 10 pm Tuesday and Wednesday, March 15 and 16.



Retrospective shows evolution of Morse

Endeavour is the third in a connected series of British detective dramas presented on **MASTERPIECE** over the past 35 years. In celebration of its 10th year, **Endeavour: The Evolution** provides a retrospective of the first seven seasons in advance of the season 8 premiere. In addition to video clips from throughout the series' history, the special includes behind-the-scenes features and interviews with the cast and creators. It also explores how DC Endeavour Morse and DI Fred Thursday have changed through the years. The program delves into the characters, themes, and techniques that make **Endeavour** such a top-notch mystery and a fan favorite on WILL-TV. **Endeavour: The Evolution** airs 9 pm Thursday, March 3.



Season 11 of Call The Midwife premieres



The multi-award-winning drama **Call The Midwife** returns for season 11. The series features the nurses, midwives, and nuns from Nonnatus House, who visit the expectant mothers of Poplar, providing the poorest women with the best possible care. Season 11 continues with an episode set in Easter 1967. Celebrations are underway for a colorful Easter Bonnet parade outside Nonnatus House. Sister Monica Joan and Reggie are excited about the Eurovision song contest and Nancy, having just passed her midwifery examinations, is about to don her red cardigan for the first time. **Call The Midwife** continues Sundays at 7 pm, with season 11 premiering March 20.

Film tells story, shows beauty of Illinois barns

In celebration of WILL's centennial year, we are revisiting some of our most popular and acclaimed locally-produced documentaries. This month, **Barns: An Illinois Story** airs at 8 pm Monday, March 28 as a part of Doc-u-Monday.

Part documentary and part regional storytelling, this film serves as an all-out love letter to the iconic structures that dot our state's landscape. Producer Oliver Peng traveled throughout the state to capture glorious images of barns that call Illinois home. Interviews with barn owners and restorers are interspersed with breathtaking time-lapse videography, aerial footage, and mini camera shots to give you a new perspective on these familiar structures.

Viewers might recognize UI Round Barns on the University of Illinois campus in Champaign County; Allerton Music Barn at the Allerton Park and Conference Center in Piatt County; Phelps Barn in Peoria County; Hammond Barn in McDonough County; or The Barn at Allen Acres in Whiteside County.



Your bucket list for Midsomer

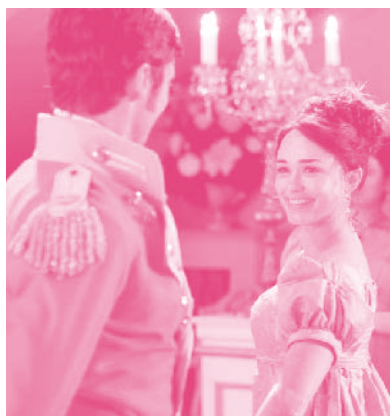


Based on the crime-novel series by Caroline Graham, **Midsomer Murders** follows the efforts of Detective Chief Inspector Tom Barnaby to solve crimes that occur in the wealthy, isolated English county of Midsomer, a picturesque and peaceful place on the outside but one filled with amoral and snobbish eccentrics with all kinds of vices.

John Nettles, who plays Barnaby, hosts **20 Things To Do in Midsomer ... Before You Die**, a 20th anniversary special that features past and present stars discussing the peculiar quirks of the delightful yet deadly Midsomer county.

20 Things To Do in Midsomer ... Before You Die airs 8 pm Saturday, March 5 and again at 5:30 pm Sunday, March 6.

Sanditon season 2 premieres



Charlotte Heywood's epic journey continues in season 2 of **Sanditon** on **MASTERPIECE**. The series picks up on the unfinished story by Jane Austen, exploring the classic quandary of how independent-minded young women can make their way in patriarchal Regency-era England. For some women in society, like Charlotte's sister Alison, love and marriage are top of mind. But others, notably Charlotte and Georgiana, have mixed feelings about matrimony.

The new season also introduces several alluring newcomers, including some military soldiers settling into town. In addition, a boycott of the sugar trade is based on real-life events of the time. Season 2 of **Sanditon** premieres at 8 pm Sunday, March 20 and is rebroadcast at 12 am Monday, March 21.

1 Tuesday

- 7:00 Finding Your Roots (TV-PG)**
Grandparents and Other Strangers. Host Henry Louis Gates Jr. helps actor Andy Samberg and author George R. R. Martin answer some family mysteries with DNA.
- 8:00 PBS NewsHour**
 State of the Union coverage.
- 10:00 Raising Ms. President (TV-G)**
 Filmmaker Kiley Lane explores why more women don't run for office. The program investigates where political ambition begins and why society should encourage more women to lead.
- 11:00 Amanpour and Company***

2 Wednesday

- 7:00 Nature (TV-G) (DVS)**
Equus: Story of the Horse: Origins.
- 8:30 Nature (TV-PG) (DVS)**
Equus: Story of the Horse: Chasing The Wind.
- 10:00 World of Wisdom & Wonder (TV-G)**
Repeated 1:30 am 3/4, 4 pm 3/6, 10 pm 3/7, and 2:30 am 3/12.
- 11:00 Amanpour and Company**

3 Thursday

- 7:00 Mid-American Gardener (TV-G)**
 See article on page 19.
- 8:00 Rick Steves Why We Travel (TV-PG)**
Repeated 12:30 am 3/5 and 2 am 3/9.
- 9:00 Endeavour: The Evolution (TV-PG)**
 See article on page 10.
- 10:30 Rick Steves Island Hopping Europe (TV-G)**
 Join Rick on a tour of four of Europe's most intriguing and surprising islands: Malta, Capri, Orkney, and Skye. This untraditional island-hopping adventure skips the hot sun and tiki drinks, but comes with remote beaches, Crusader castles, pre-historic wonders, and windswept slopes. *Repeated 1:30 am 3/7.*
- 11:00 Amanpour and Company**

4 Friday

- 7:00 Washington Week**
- 7:30 Firing Line with Margaret Hoover**
Repeated 4:30 am 3/6.
- 8:00 This Land Is Your Land (My Music) (TV-G)**
 Take a musical journey through the evolution of modern American folk music, from its roots in bluegrass to San Francisco coffee houses to clubs in Greenwich Village. The Smothers Brothers and Judy Collins host.
- 11:00 Amanpour and Company**

5 Saturday

- 8:00 20 Things to Do In Midsomer ... Before You Die**
 See article on page 11. *Repeated 5:30 pm 3/6.*
- 9:30 Classical Rewind (My Music) (TV-G)**
 Experience the beauty, romance, and dramatic power of musical masterpieces in this visual and auditory joyride through the world of classical hits. *Repeated 8:30 pm 3/7 and 12:30 am 3/10.*
- 11:00 The Rolling Stones: A Bigger Bang: Live On Copacabana Beach (TV-PG)**

6 Sunday

- 7:00 Sanditon on MASTERPIECE (TV-14)**
 Season 1, episode 3 of 8. Young Stringer presses Tom for back pay owed his builders, currently toiling under dangerous conditions. Aided by the new doctor, Charlotte and Sidney respond to an emergency.
- 8:00 Sanditon on MASTERPIECE (TV-14)**
 Season 1, episode 4 of 8. Lord Babington courts Esther, who prefers Edward. Charlotte and Sidney clash over Miss Lambe's illicit meeting with Otis.
- 9:00 Sanditon on MASTERPIECE (TV-14)**
 Season 1, episode 5 of 8. Desperate for unpaid wages, Young Stringer threatens a worker boycott of the annual cricket match with Sanditon's gentlemen.
- 10:00 Carpenters: Close to You (My Music) (TV-G)**
 This music-filled documentary traces the Carpenters' career through the eyes of Richard Carpenter and the group's friends in the music business, featuring their top recording hits. The program also contains rare footage of Richard and Karen.
- 11:30 Ed Slott's Retirement Freedom!**

7 Monday

- 7:00 From Sea to Shining Sea (TV-G)**
Repeated 12:30 am 3/9.
- 8:30 Classical Rewind (My Music) (TV-G)**
 Experience the beauty, romance, and dramatic power of musical masterpieces in this visual and auditory joyride through the world of classical hits. *Repeated 12:30 am 3/10.*
- 10:00 World of Wisdom & Wonder (TV-G)**
Repeated 1:30 am 3/4, 4 pm 3/6, 10 pm 3/7, and 2:30 am 3/12.
- 11:00 Amanpour and Company**

8 Tuesday

- 7:00 '60s Pop, Rock & Soul (My Music) (TV-G)**
- 9:00 Celtic Woman: Postcards from Ireland**
 Music and songs from Celtic Woman's latest album.
- 11:00 Amanpour and Company**

9 Wednesday

- 7:00 Nature (TV-G) (DVS)**
American Horses.
- 8:30 Great Scenic Railway Journeys: 150 Years on the Right Track (TV-G)**
 For over a quarter of a century, Great Scenic Railway Journeys and its creator, Robert Van Camp, have captured the world of Tourist Railway Adventures. This special features favorite rail journeys. Hosted by Grammy-winning musician and storyteller David Holt. *Repeated 12:30 am 3/12.*
- 10:30 Rick Steves' Tasty Europe (TV-G) (DVS)**
 Travel expert and globetrotter Rick Steves eats his merry way through Europe. One delightful taste at a time, he shows how food is a prime ingredient in what defines cultures all across the continent.
- 11:00 Amanpour and Company**

* New time for series

10 Thursday

- 7:00 Magic Moments: The Best of '50s Pop (My Music)** (TV-G)
Repeated 12:30 am 3/8.
- 9:30 Rick Steves Fascism In Europe** (TV-PG)
Rick Steves travels back a century to learn how fascism rose and then fell in Europe — taking millions of people with it. He traces fascism's history from its roots in the turbulent aftermath of World War I, when masses of angry people rose up, to the rise of charismatic leaders who manipulated that anger, and the totalitarian societies they built.
- 11:00 Amanpour and Company**

11 Friday

- 7:00 Washington Week**
- 7:30 Firing Line with Margaret Hoover**
Repeated 4:30 am 3/13.
- 8:00 Celebrating PBS NewsHour**
- 10:00 Easy Yoga: The Secret to Strength and Balance with Peggy Cappy** (TV-G)
Discover how yoga can help you increase strength and mobility, regardless of age. Cappy's gentle approach shows how yoga can increase range of motion, improve body awareness, help prevent bone loss, and keep your metabolism running efficiently.
- 11:00 Amanpour and Company**

12 Saturday

- 5:30 Best of WILL**
Viewer favorites from this month's pledge programming will be featured.

13 Sunday

- 7:00 Sanditon on MASTERPIECE** (TV-14)
Season 1, episode 6 of 8. At loggerheads over the disappearance of Miss Lambe, Charlotte and Sidney comb the London underworld to find her. Meanwhile, Tom tries to save Sanditon and his marriage, and Edward and Clara hatch a cunning plot to seize Lady Denham's legacy.
- 8:00 Sanditon on MASTERPIECE** (TV-14)
Season 1, episode 7 of 8. With the approach of Sanditon's regatta, the success of the resort hangs in the balance — as do assorted romances. How will Charlotte, Sidney and other lovers fare in the marriage game?
- 9:00 Sanditon on MASTERPIECE** (TV-14)
Season 1, episode 8 (season finale). On the night of the Midsummer Ball, romance, jealousy and betrayal fill the air. Events conspire to leave Charlotte and the Parker family facing difficult choices.
- 10:00 Best of WILL**
Viewer favorites from this month's pledge programming will be featured.

14 Monday

- 7:00 Antiques Roadshow** (TV-G)
McNay Art Museum, hour 1 of 3. It's a fiesta of fabulous finds as Roadshow visits McNay Art Museum in San Antonio. Repeated 6 pm 3/19.
- 8:00 Antiques Roadshow** (TV-G)
McNay Art Museum, hour 2 of 3. Everything is bigger in Texas, including Roadshow appraisals. Repeated 12:30 am 3/15.
- 9:00 Independent Lens** (TV-14)
Accept The Call. Yusuf Abdurahman, who left Somalia as a refugee 25 years ago, has his worst fear realized when his son is arrested in an FBI counterterrorism sting. Follow Yusuf as he strives to understand why his child would leave America and attempt to join ISIS. *Repeated 2 am 3/16 and 2 am 3/19.*
- 10:30 POV Shorts** (TV-PG) (DVS)
On Caregiving and Grace. Stories of courageous empathy in the face of loss. *Águilas.* The story of a group of searchers who volunteer to recover missing migrants crossing the southern border in Arizona. *The Hairdresser.* Kathleen reflects on her experience as a hairdresser while we bear witness to her unusual work.
- 11:00 Amanpour and Company**

15 Tuesday

- 7:00 Finding Your Roots** (TV-PG)
On Broadway. Henry Louis Gates Jr. investigates the family histories of Broadway stars Audra MacDonald and Mandy Patinkin.
- 8:00 Annie Oakley: American Experience** (TV-PG) (DVS)
Meet the Ohio female sharpshooter who won fame and fortune in a man's world for never missing a shot. Born into poverty, the self-taught Oakley picked up a gun at age 15 not to become a superstar, but to save her family from destitution. *Repeated 3 am 3/17 and 3 am 3/20.*
- 9:00 Frontline**
Sex Trafficking in America.
- 10:00 Burren: Heart of Stone** (TV-PG)
Symphony of Life. Part 1 of 2.
See article on page 10.
- 11:00 Amanpour and Company**

16 Wednesday

- 7:00 Nature** (TV-PG) (DVS)
Pandas: Born to Be Wild. Unlock the mysteries of wild pandas whose counterparts in captivity are known for their gentle image. Journey with filmmakers, scientists, and rangers to witness pandas' startling courtship and aggression behaviors. *Repeated 3 am 3/18 and 1 am 3/20.*
- 8:00 Nova** (TV-PG) (DVS)
Looking For Life on Mars.
- 9:00 Expedition with Steve Backshall: Unpacked** (TV-PG)
No Turning Back.
- 10:00 Burren: Heart of Stone** (TV-PG)
Song of our Ancestors. Part 2 of 2.
See article on page 10.
- 11:00 Amanpour and Company**

17 Thursday

- 7:00 Mid-American Gardener** (TV-G)
See article on page 19.
- 7:30 Ask This Old House** (TV-G)
Front Hall Closet, Block Retaining Wall.
Repeated 4:30 am 3/19 and 4:30 pm 3/26.
- 8:00 Father Brown** (TV-PG)
The Curse of the Aesthetic. Season 8, part 8 of 10. An artist's muse, Isabella, commits suicide, though no body is found.
Repeated 7 pm 3/19.
- 9:00 Endeavour on MASTERPIECE** (TV-14) (DVS)
Apollo. Season 6, part 2 of 4. A car accident proves to be murder, leading Endeavour to investigate suspects in the Oxford astrophysics department and a TV puppet studio.
- 10:30 Born to Riverdance** (TV-G)
- 11:00 Amanpour and Company**

18 Friday

- 7:00 Washington Week**
- 7:30 Firing Line with Margaret Hoover**
Repeated 4:30 am 3/20.
- 8:00 Great Performances** (TV-PG)
Movies for Grownups Awards with AARP the Magazine.
- 9:30 Celtic Dreams: Daniel Hope's Hidden Irish History** (TV-G)
Internationally acclaimed violinist Daniel Hope explores Ireland, music, and his family legacy.
Repeated 1 am 3/19.
- 10:30 Beyond The Canvas** (TV-PG)
Women of Wonder. This film honors five trailblazing women in the arts, including Dolly Parton, Julie Andrews, and other creative women. It reveals how the road to success wasn't just one they walked, but one they paved themselves. Repeated 3:30 am 3/21.
- 11:00 Amanpour and Company**

19 Saturday

- 7:00 Father Brown** (TV-PG)
The Curse of the Aesthetic. Season 8, part 8 of 10. An artist's muse, Isabella, commits suicide though no body is found. Father Brown, Bunty, and Mrs. McCarthy are drawn into the artist's obsessive thoughts of Isabella.
- 8:00 Midsomer Murders** (TV-PG)
Crime and Punishment, part 1 of 2. Season 19, episode 2 of 6. The Bleakridge Watch patrols the streets of their remote village, exposing anyone who steps outside the law.
Repeated 5:30 pm 3/20.
- 8:45 Midsomer Murders** (TV-PG)
Crime and Punishment, part 2 of 2. Season 19, episode 2 of 6.
- 9:30 Shakespeare & Hathaway: Private Investigators** (TV-PG)
All That Glisters. Season 3, episode 8 of 10. Frank and Lu find themselves puzzling through the world of Enigmatology as they become podcasters investigating a mysterious 20-year-old car accident that killed a young mother.
Repeated 2 pm 3/20.
- 10:30 Austin City Limits** (TV-PG)
Jackie Venson/Mavis Staples with Special Guest Bonnie Raitt.
- 11:30 David Holt's State of Music** (TV-G)
Della Mae.

20 Sunday

- 7:00 Call The Midwife** (TV-14)
See article on page 10. Season 11, episode 1.
Repeated 2 am 3/22 and 12 pm 3/27.
- 8:00 Sanditon on MASTERPIECE** (TV-14) (DVS)
See article on page 11. Season 2, episode 1 of 6. Repeated 12 am 3/21.
- 9:00 Before We Die** (Swedish) (TV-14)
Season 1, episode 1 of 6. When her lover and fellow police officer Sean goes missing, DI Hannah Laing launches an urgent manhunt.
Repeated 1 am 3/21, 4 am 3/22, 3 am 3/23.
- 10:00 Seaside Hotel** (TV-PG)
Amanda's Guests. Season 3, episode 1 of 7. The regulars are back at the hotel, and they have brought more than just their clothes with them — they packed their troubles, too.
- 11:00 A Very British Romance with Lucy Worsley** (TV-PG)
Episode 1. Celebrate love with Lucy Worsley as she delves into the seductive history of British romance, uncovering the social, political, and cultural forces that shaped ideals of romantic love during the Georgian era, including the novels of Jane Austen.

21 Monday

- 7:00 Antiques Roadshow** (TV-PG)
Repeated 1 am 3/22 and 6 pm 3/26.
- 8:00 Antiques Roadshow** (TV-G)
McNay Art Museum, hour 3 of 3. Everything is bigger in Texas, including Roadshow appraisals. Repeated 4 am 3/23.
- 9:00 Bring Her Home** (TV-PG)
See article on page 2. Repeated 2 am 3/23, 3 am 3/24, and 2 am 3/26.
- 10:00 Aldwyth: Fully Assembled**
Aldwyth, a South Carolina artist who defies categorization, is a painter, a sculptor, a box constructionist, and an intricate collagist. This film follows her remarkable creative journey, documenting her challenges and obstacles, and telling her inspiring story.
- 11:00 Amanpour and Company**

22 Tuesday

- 7:00 Finding Your Roots** (TV-PG)
Hollywood Royalty. Henry Louis Gates Jr. helps actors Isabella Rossellini, Anjelica Huston and Mia Farrow unearth surprising new revelations about their family histories.
Repeated 4 am 3/24, 3 am 3/26, and 4 am 3/28.
- 8:00 Frontline**
Pelosi's Power.
- 9:30 In Their Own Words: Angela Merkel** (TV-PG)
Repeated 1 am 3/23, 2 am 3/24, and 3 am 3/27.
- 10:30 In Their Own Words:** (TV-PG) (DVS)
Princess Diana. See how Princess Diana defied expectations and evolved into one of the most impactful icons of our time.
- 11:30 Amanpour and Company**

23 Wednesday

- 7:00 Nature** (TV-PG) (DVS)
Sex, Lies and Butterflies. Explore the astounding abilities of butterflies 360 vision, deceptive camouflage, chemical weaponry, and fantastic flight. Look beyond their bright colors and fragile beauty and follow them on one of the greatest migrations on earth. *Repeated 3 am 3/25 and 1 am 3/27.*
- 8:00 Nova** (TV-G)
Secret Mind of Slime. *Repeated 4 am 3/25 and 12 am 3/27.*
- 9:00 Expedition with Steve Backshall: Unpacked** (TV-PG)
Close Encounters. *Repeated 1 am 3/24, 2 am 3/25, and 2 am 3/27.*
- 10:00 Secrets of the Dead** (TV-PG)
The Woman in the Iron Coffin. Follow a team of forensic experts as they investigate the preserved remains of a young African American woman from 19th-century New York and reveal the little-known story of early America's free black communities.
- 11:00 Amanpour and Company**

24 Thursday

- 7:00 Mid-American Gardener** (TV-G)
 See article on page 19.
- 7:30 Ask This Old House** (TV-G)
Fireplace Repairs, Pond Maintenance. *Repeated 4:30 am 3/26.*
- 8:00 Father Brown** (TV-PG)
The Fall of the House of St Gardner. Season 8, part 9 of 10. Bunty helps her latest boyfriend, Harvey St Gardner, and his sister, fashion designer Lady Vivien St Gardner-Verde, hold a fashion show in Kempleford, housing the entourage at Montague Hall. *Repeated 7 pm 3/26.*
- 9:00 Endeavour on MASTERPIECE** (TV-14) (DVS)
Confection. Season 6, episode 3 of 4. A triple murder exposes the secrets of a village in the grip of deadly rumors.
- 10:30 Variety Studio: Actors on Actors** (TV-PG)
- 11:00 Amanpour and Company**

25 Friday

- 7:00 Washington Week**
- 7:30 Firing Line with Margaret Hoover**
Repeated 4:30 am and 11 am on 3/27.
- 8:00 Great Performances** (TV-PG)
The Conductor. See article on page 2. *Repeated 2 am 3/28.*
- 9:30 Seeing Is Believing: Women Direct** (TV-PG)
 See article on page 2.
- 10:30 Charlotte Mansfield: A Woman Photographer Goes To War** (TV-G)
 This program tells the remarkable story of the pioneering military career of Charlotte Dee Mansfield, a photographer and photo analyst in the Women's Army Corps.
- 11:00 Amanpour and Company**

26 Saturday

- 7:00 Father Brown** (TV-PG)
The Fall of the House of St Gardner. Season 8, part 9 of 10. Bunty helps her latest boyfriend, Harvey St Gardner, and his sister, fashion designer Lady Vivien St Gardner-Verde, hold a fashion show in Kempleford, housing the entourage at Montague Hall.
- 8:00 Midsomer Murders** (TV-PG)
Last Man Out, part 1 of 2. Season 19, episode 3 of 6. Tensions run high in Lower Pamplung as a new type of cricket threatens a century of tradition. When a star cricketer dies during a tournament, DCI Barnaby and DS Winter's investigation draws them into a dangerous game with a surprise visitor from Barnaby's past. Guest appearance by Jason Hughes as DI Ben Jones. *Repeated 5:30 pm 3/27.*
- 8:45 Midsomer Murders** (TV-PG)
Last Man Out, part 2 of 2. Season 19, episode 3 of 6. *Repeated 6:15 pm 3/27.*
- 9:30 Shakespeare & Hathaway: Private Investigators** (TV-PG)
O Thou Invisible Spirit of Wine. Season 3, episode 9 of 10. When paranormal activity is reported in a Tudor pub, old family feuds are brought to a head. *Repeated 2 pm 3/27.*
- 10:30 Austin City Limits** (TV-PG)
 Yola. Enjoy an hour featuring acclaimed British soul singer and songwriter Yola.
- 11:30 David Holt's State of Music** (TV-PG)
Darin and Brooke Aldridge with John Cowan. David visits with the award-winning duo Darin and Brooke Aldridge and longtime friend John Cowan at the Earl Scruggs Center in Shelby, North Carolina

27 Sunday

- 7:00 Call The Midwife** (TV-14)
 See article on page 10. Season 11, episode 2. *Repeated 1:30 am 3/29.*
- 8:00 Sanditon on MASTERPIECE** (TV-14) (DVS)
 See article on page 11. Season 2, episode 2 of 6. *Repeated 12 am 3/28 and 2:30 am 3/29.*
- 9:00 Before We Die** (Swedish) (TV-14)
 Season 1, episode 2 of 6. Hannah and her new partner Billy start investigating the Mimica family. But a shocking discovery makes Hannah want to pull the plug on the entire operation. *Repeated 1 am 3/28, 3:30 am 3/29, and 2 am 3/31.*
- 10:00 Seaside Hotel** (TV-PG)
The Tramp. Season 3, episode 2 of 7. Madsen tries to find funding for his construction project, while Frigh is becoming more and more concerned with Mr. Weyse's young student, Miss Kitty.
- 11:00 A Very British Romance with Lucy Worsley** (TV-14)
 Episode 2. Travel back to the Victorian era with Lucy Worsley as she delves into the steamy history of British romance, uncovering the social, political and cultural forces that shaped ideals of romantic love during Victoria's reign.

28 Monday

- 7:00 Antiques Roadshow** (TV-PG)
- 8:00 Barns: An Illinois Story** (TV-G)
In celebration of WILL's centennial year, we are revisiting some of our most popular and acclaimed locally-produced documentaries. See article on page 11.
- 9:00 Independent Lens** (TV-PG)
Writing with Fire. Meet the fearless women journalists of India's only all-female newspaper. *Repeated 2 am 3/30.*
- 10:30 Kea's Ark**
In the 1980s, a three-story ark was built in Newark's devastated Central Ward. Kea Tawana, a self-taught artist and builder, designed and built the massive boat, using salvaged materials. After working on it for years, city officials demanded it gone. Though it no longer exists, the ark remains a powerful symbol of hope in Newark and beyond.
- 11:00 Amanpour and Company**

29 Tuesday

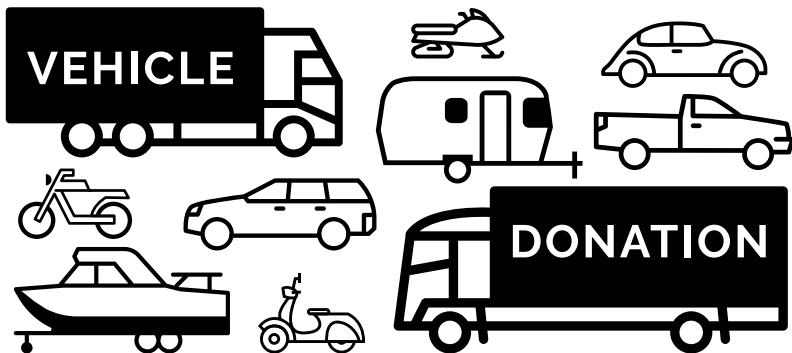
- 7:00 Finding Your Roots** (TV-PG)
Off The Farm. Henry Louis Gates Jr. explores the humble roots of comedic actors Melissa McCarthy and Eric Stonestreet, retracing the ancestral journeys that laid the groundwork for their success. *Repeated 4 am 3/31.*
- 8:00 American Experience**
Zoot Suit Riots. This powerful film explores the complicated racial tensions and the changing social and political landscape that led up to the explosion on LA's streets in the summer of 1943. *Repeated 3 am 3/31.*
- 9:00 Frontline**
Plot to Overturn the Election.
- 10:00 Rick Steves Fascism In Europe** (TV-PG)
Rick Steves travels back a century to learn how fascism rose and then fell in Europe — taking millions of people with it.
- 11:00 Amanpour and Company**

30 Wednesday

- 7:00 Nature** (TV-G) (DVS)
A Squirrel's Guide to Success. There are almost 300 species of squirrels that can glide through the air, outwit rattlesnakes, and survive the coldest temperatures of any mammal.
- 8:00 Nova** (TV-PG) (DVS)
Secrets. In Our DNA. Millions of Americans have sent their DNA to be analyzed by private companies, which are revealing customers' ancestry and family connections, and reporting health risks. But what are the pitfalls and unintended consequences of sharing genetic data?
- 9:00 Expedition with Steve Backshall: Unpacked** (TV-PG)
Teamwork.
- 10:00 Secrets of the Dead** (TV-PG)
Viking Warrior Queen. Join a team of archaeologists as they examine one of the most significant Viking graves ever found and test the DNA of the remains of the female warrior buried inside, rewriting our understanding of Viking society.
- 11:00 Amanpour and Company**

31 Thursday

- 7:00 Mid-American Gardener** (TV-G)
See article on page 19.
- 7:30 Ask This Old House** (TV-G)
Replacing A Toilet Seat, Smart Electrical Panels.
- 8:00 Father Brown** (TV-PG)
The Tower of Lost Souls. Season 8, episode 10 of 10. Reginald Brody is found dead at the bottom of a tower owned by Alistair Hemsley.
- 9:00 Endeavour on MASTERPIECE** (TV-14) (DVS)
Deguello. Season 6, episode 4 of 4. The collapse of a tower block reveals a clue that may uncover the truth behind the crime that has haunted Endeavour and the team.
- 10:30 Variety Studio: Actors On Actors** (TV-PG)
- 11:00 Amanpour and Company**



Your old vehicle can help drive great public media programs.

To learn more about donating your vehicle to WILL, call 855-845-1960 or go to will.illinois.edu/cardonation.

IPM wins two national public media awards

Illinois Public Media has been honored with two national Public Media Awards by the National Educational Telecommunications Association (NETA).

Lift Every Voice, part of our **American Portrait | Central Illinois** series, was honored for excellence in COVID 19 content. Featuring several area choirs, it's a timely look of the staying power of music and the arts in strange and uncertain times. Team members include Sarah Edwards, producer/director; DJ Roach, producer; and Lillie Duncanson, executive producer.

We also were honored for best annual report. Our 2020 report was a chance to take stock of the power of public media and the impact it had on all of our lives at the start of such a challenging and unprecedented time. Team members include Kurt Bielema, art director; Elizabeth Westfield, communications manager; and Cyndi Pacey, lead writer.

Lift Every Voice is available to stream on the PBS Video app, and the annual report is available at will.illinois.edu/about/annualreports.

NETA

« COMING AND GOING THIS MONTH TO » WILL Passport



MARCH HIGHLIGHTS

Cobra

Season 2 (above)

American Experience

- *Riveted: The History of Jeans*
- *The American Diplomat*

Independent Lens

- *Owned: A Tale of Two Americas*

Just a Mortal Man — The Jerry Lawson Story

Nature

- *Penguins: Meet the Family*
- *The Ocean's Greatest Feast*

NOVA

- *Arctic Sinkholes*
- *Great Mammoth Mystery*

LEAVING SOON

Professor T

Seasons 1 and 2 (Belgian Version)

A History of Christianity

Il Divo: Timeless — Live in Japan

Pink Floyd: Live in Venice

Child in Time

Inheritance

Nature

- *Sex Lies and Butterflies*

Mister Rogers: It's You I Like

Go to will.illinois.edu/passport to download the PBS Video app and find out how you can unlock more shows with your WILL Passport.





Jessie Heathman and guest rehearsing on the set of **Your Home and Mine**.

Early WILL home economics programming provided ‘gateway’ to higher education

Agricultural programming stretches all the way back to the beginning of WILL with the first “ag report” premiering on day one, April 6, 1922. **Turning Cream into Gold** was part of the day’s half hour of programming. By 1928, specialists from the University of Illinois College of Agriculture were recurring hosts on the air, talking about land, crops, livestock, and other issues of concern to farmers. WILL-AM would begin regular broadcasts of market prices by 1935.

Much of what was heard in those early days was educational and informative in nature, consisting mostly of talks from University of Illinois professors and lectures from courses. And these agricultural reports were critical to life in rural America, but they weren’t the whole picture on “life on the farm.”



Directors room for WILL-TV.

Women’s roles on the farm — and in the home — were not included. But that would all change with the introduction of Jessie Heathman, simply known as Miss Heathman to listeners and later viewers, as the happy homemaker’s trusted guide.

For many at the time, Miss Heathman was synonymous with WILL’s original home economics programming, created in partnership with University of Illinois Extension. By 1949 she was the host of two daily radio shows on WILL-AM, **Jessie Heathman and Homemakers Quarter Hour**, and by 1957, she was producing, writing, and starring in **Your Home and Mine** on WILL-TV.

To the world, Heathman might have just been seen as a homemaker — showing other women ways to decorate a home, raise children, and feed a family — but she was so much more than that. She was a researcher, a home economist, a lecturer, a producer, a broadcaster, a professional. She was a working woman. Ironically, she was bucking the very cultural tradition she was perpetrating. Heathman was a pioneer whether she realized it at the time.



Chief Audio Engineer Charles Kelly and journalism student Delores Kennedy.

Illinois Public Media reporter Jim Meadows recently interviewed University of Michigan media historian Susan Douglas as a part of his research for the **Illinois History Minutes** series. Douglas believes that home economics programs, such as **Your Home and Mine**, offered a gateway for women into higher education during the 20th century.

“This was one way women could be professors and enter the academy, and they took enormous pride in helping other women learn all kinds of things about health, sanitation, cooking, housekeeping, how to provide the best nutrition for their children, all of that. And there was a hunger for that, especially among women, who may have been isolated on farms, or maybe couldn’t afford certain women’s magazines that might traffic in that kind of information, but they could get it for free on the radio.”

Heathman left the University of Illinois Extension in August of 1968, continuing her career in educational television productions in Minneapolis-St. Paul — where she lived until she died in March 1981.



Audio Engineer Rod Prummel seen with tape recorders and control panel.



Getting back into the garden ... and the studio



Mid American
GARDENER

Just in time for spring, we talked to Tinisha Spain, host of **Mid-American Gardener**, about what she is planning for her garden. She also shared what it has been like to continue the show during a pandemic.

Q. We introduced you in 2018 as the new host of Mid-American Gardener. Things have certainly changed since then. Can you tell us about that?

A. Yes. Everything has changed. With short notice, the pandemic forced us to get creative if we were going to continue to have a show at all. We've tried several different styles, from Facebook Live to recording on Zoom and doing more outdoor events like farmer's markets and plant swaps. It was important to still be able to connect with people and talk about plants and gardening, and we did everything we could to keep the show in production throughout the pandemic.

Lately, we've been back in-studio with a hybrid format show, which is working out nicely. We bring one panelist on set to do a demonstration or answer questions, and a second guest joins us via Skype. Everyone feels safe and we're able to socially distance ourselves.

Q. What has the reaction been?

A. It's been incredible! A lot of people really got into plants during the pandemic, and so we've been able to expand our audience to a more diverse group. When we started using Facebook and YouTube to broadcast live, we gained a different age group and demographic, and even viewers who are outside of our television viewing area. Hundreds of people are interacting with us in our social media spaces, and we love it!

Q. Spring is just around the corner, what can we expect from Mid-American Gardener in 2022?

A. We hope to continue to think outside the studio: more plant swaps, more events, and more learning from the field. I think we've done a really good job of bringing the garden to our viewers. Many of our viewers have taken up plants and gardening for the first time, and we've been able to be on that journey with them and share successes and stumble right along with them.

Viewers can walk through the step-by-step process of starting seeds, getting the ground or outdoor containers ready, transplanting seedlings, watering, pests, and everything else you need to know to get that green bean from seed to your dinner table. Last spring, we went to several of our panelists' homes to learn how to plant, weed, and label our plants. We even visited some viewers' home gardens, and people really enjoy seeing that.

Q. Do you know what you'll be growing in your own garden this year?

A. Those seed catalogs start coming the first week in January, and I can't resist. Favorites at our house are sugar snap peas, beans, watermelon, lettuce, and spinach. This year I also want to look at my landscape and really make a concerted effort to add more native plants and pollinators to support our local ecosystem. I encourage others to do the same!

Patterns welcomes a new editor

Doris Dahl joins the Illinois Public Media team as our new Patterns editor. In this position, Doris will manage the month-to-month Patterns duties, including curating, writing, and editing article content, as well as gathering program information, photos, and other elements for our member magazine.

Doris is no stranger to publications, or even to Patterns specifically. In fact, she began her career at the University of Illinois as the Patterns editor back in 1990. In the years since then, she worked for the faculty/staff newspaper on campus, serving as the editor of Inside Illinois for more than 20 years. After the newspaper was discontinued, she continued her campus career working in communications at the Beckman Institute for Advanced Science and Technology, until her retirement in April 2021.

"I am very excited to bring my experience in publications back to my first love, Patterns magazine. After my retirement last year, this move feels like I have come full circle as I rejoin the Illinois Public Media team," said Doris.

Additionally, during her tenure at the University of Illinois, she served as the program guide editor for the Krannert Center for Performing Arts for several years. Prior to her work here on campus, Doris worked in marketing and public relations for two different fast-food franchises in central Illinois.

Doris is a lifelong listener of NPR and WILL-AM, experiencing her share of "driveway moments" with her favorites **All Things Considered** and **Wait Wait ... Don't Tell Me**. In today's current media climate, she says she finds herself appreciating public media's objective, in-depth news reporting more than ever. "I find myself turning to public broadcasting for a clear, unbiased review of the day's events and an accurate explanation of what it means."

That being said, as a mother and grandmother, her heart lies with PBS and WILL-TV. "My (now adult) children grew up with **Arthur** and **Sesame Street**, and I now find myself watching those same great PBS KIDS programs with my grandchildren," said Doris. "I mean, how can you not dance and sing during the **Arthur** theme song?"

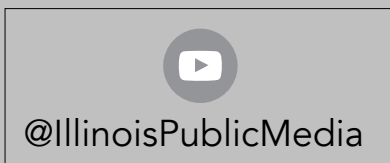
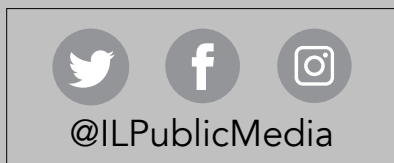
In her semi-retirement, Doris is now living in Tennessee. When she isn't working remotely with the Illinois Public Media team back here in Illinois, she hopes to combine new outdoor adventures and her love of photography as she explores her new home state.

Welcome (back) to the team, Doris!



Illinois Public Media
will **npr** **PBS**

FOLLOW US
ON OUR SOCIAL NETWORKS



Thank you, Program Underwriters!

Private support accounts for the largest single source of funds necessary to make Illinois Public Media and the WILL stations great resources for communities across central Illinois.

We appreciate the following organizations that have stepped forward to join the individuals and families who support award-winning public media services.

AARP Illinois	CU Woodshop	Prairie Rivers Network
Allerton Park and Retreat Center	Delta Dental	Pride Outdoor Services
Ameren Illinois	Farm Credit	RegCakes – Gluten Free Bakery
Beard Culture and Gallery	Great Value Storage	Rental City
Beckman Institute for Advanced Science and Technology	The Glitter Boxx MakeUp Studio	Research Park
Birch Tree Counseling	Health Alliance	Sinfonia da Camera
Busey	Humanities Research Institute	Smith Photography
CBPB Popcorn Shop	Illinois Arts Council	St. Joseph Apothecary
Center for Advanced Study	Illinois Division of Rehabilitation Services	Strategic Farm Marketing
Center for Global Studies	Illini Mattress	Sweeney Brothers Fine Flooring
Central Illinois Regional Airport	Illinois Secretary of State	Symphony Guild of Decatur
Champaign Danville Overhead Doors	Illinois State University	Techline
Champaign Public Library	Illinois Symphony Orchestra	Ten Thousand Villages
Champaign-Urbana Ballet Company	Innovation Arts and Entertainment	Thomas-Mamer, LLP
Champaign-Urbana Spinners and Weavers Guild	Krannert Art Museum	Tom Brewer Gallery
Champaign-Urbana Symphony	Kreative Vision Photography	Transformative Works and Cultures
Christian Horizon/River Birch Living	Landscape Recycling Center	True Endeavors
Christie Clinic	Leek & Sons Funeral Home	TrophyTime
City of Urbana – Market @ The Square	MedServ Equipment	University of Chicago Graham College
Clark-Lindsey Village	Midwest Renewable Energy Association	University of Chicago Professional Education
Cold Mountain Kombucha Bar	Minuteman Press	University of Illinois Physics
Columbia Street Roastery	NAI Central Illinois	Urbana Acupuncture
Common Ground	Natural Gourmet	Urbana Free Library
Community Foundation	Office of the Vice Chancellor for Diversity, Equity, and Inclusion	Urbana Park District
Community Shares of Illinois	OSF Healthcare	Urbana Parks Foundation
Craft League Art Fair	Patterson Office Supplies	Virginia Theatre
Crowley Communications	Pour Bros. Craft Taproom Champaign	Vision Point Eye Center
CU Folk and Roots Festival	Prairie Enthusiasts	Vonnora Muay Thai
		Wesley United Methodist Church
		World Harvest/Strawberry Fields

Friends of WILL
Campbell Hall
300 North Goodwin Avenue
Urbana, IL 61801-2316

MOVING?

Let your public broadcasting membership move with you.

Fill out the form below and send it with your address to:

Friends of WILL, 300 North Goodwin Avenue, Urbana, IL 61801-2316

☐ Check here if you wish to remove your name from our membership list.

☐ Please update my membership with this new address:

Name: _____

Street: _____

City: _____ State: _____ Zip: _____

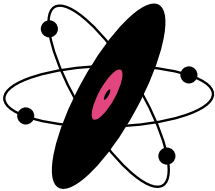
Phone: () _____ Email: _____

Go to **will.illinois.edu/optout** to go green & receive Patterns digitally.

NONPROFIT
ORGANIZATION
U.S. POSTAGE PAID
CHAMPAIGN, IL
PERMIT NO. 453

Atomic Age

COCKTAIL PARTY



Mai Tai

INGREDIENTS:

- 1 oz. aged rum
- 1 oz. white rum
- 1 oz. fresh lime juice, a squeezed lime half reserved
- ½ oz. curaçao or Grand Marnier
- ¼ oz. orgeat
- ¼ oz. simple syrup
- 1 lime wedge
- 1 large mint sprig

DIRECTIONS:

Combine both rums, lime juice, curaçao, orgeat, simple syrup, and reserved lime half in a cocktail shaker. Fill shaker with ice, cover, and shake vigorously until outside of shaker is very cold, about 20 seconds. Strain into a glass filled to the brim with crushed ice. Garnish with lime wedge and mint sprig.

Tune in 11 pm Saturdays with an encore 10 pm Sundays on FM 90.9 for a celebration of the golden age of the hi-fi and beyond.

