

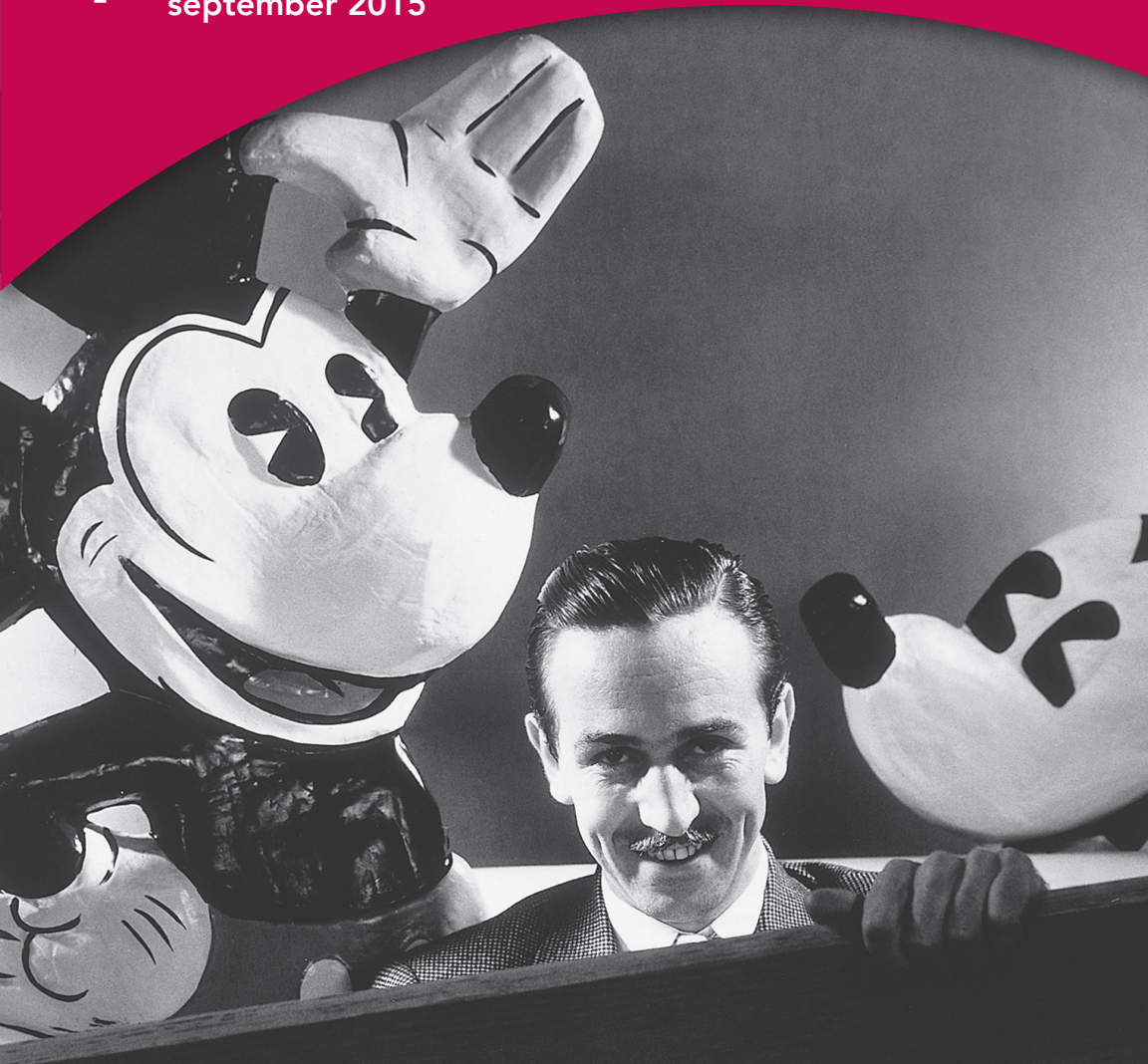
FRIENDS OF WILL MEMBERSHIP MAGAZINE

npr

PBS

patterns

september 2015



AMERICAN EXPERIENCE

WALT
DISNEY



Illinois Public Media™

WILL radio.tv.online

Membership Hotline: 800-898-1065

WILL AM-FM-TV: 217-333-7300

Campbell Hall for Public Telecommunication
300 N. Goodwin Ave., Urbana, IL 61801-2316

Mailing List Exchange

Donor records are proprietary and confidential.
WILL will not sell, rent or trade its donor lists.

Patterns

Friends of WILL Membership Magazine

Editor: Cyndi Pacey
Art Director: Michael Thomas
Designer: Laura Adams-Wigg

Printed by Premier Print Group.



Printed with SOY INK
on RECYCLED,
RECYCLABLE paper.

Radio

90.9 FM: A mix of classical music and NPR information programs, including local news. (Also heard at 106.5 in Danville and with live streaming on will.illinois.edu.) See pages 4-5.

101.1 FM and 90.9 FM HD2: Locally produced music programs and classical music from C24. (101.1 is available in the Champaign-Urbana area.) See page 6.

580 AM: News and information, NPR, BBC, news, agriculture, talk shows. (Also heard on 90.9 FM HD3 with live streaming on will.illinois.edu.) See page 7.

Television

WILL Create

Cooking, travel, gardening and home improvement, arts and crafts. 12.3; also available on Comcast and Mediacom. See page 8.

WILL World

PBS documentaries, news and public affairs. 12.2; also available on Comcast and Mediacom. See page 8.

WILL-HD

All your favorite PBS and local programming, in high definition when available. 12.1; Contact your cable or satellite provider for channel information. See pages 9-16.

Online

will.illinois.edu



facebook.com/WILLradiotvonline



@willpublicmedia



@willpublicmedia

Get WILL eNews

Video previews, behind-the-scenes information, program schedule updates and more, delivered every Wednesday to your email inbox.

go.illinois.edu/WILLsubscribe

patterns

september 2015 Volume XLIII, Number 3

Working in public media, it's common for me to hear from listeners and viewers about features, programs and news reports that have made real impact in their lives. Whether it's current content that moves someone to take action on a local or global issue...young adults who are more aware of world events because they grew up as "NPR car seat kids"... or any number of other ways that public media makes a lasting difference, I'm always pleased to get this feedback. It reaffirms that what we do offers meaning and inspiration.



That's why it's my honor to announce a major legacy gift that's coming to Illinois Public Media from a family who passed their devotion to public radio on to their next generation.

These donors especially rely on WILL News, and want to ensure its long-term viability by helping take its technological aspects to the next level—enhancing and broadening the increasingly digital ways that people find our unique content online, on mobile devices and through podcasts. It will also bolster our abilities to facilitate more robust conversations with our publics.

This family prefers to remain anonymous with their current gift of more than \$1 million that's part of a gift commitment of over \$2 million to Illinois Public Media and the WILL stations. Their incredible generosity will support the purchase and installation of new equipment and technology at a time when public media is more important than ever—and when other sources of funding are continually in flux.

We'll share more about this vital project as we move forward. I just wanted to take this opportunity to share such heartening news of how this gift is partnering with all of your crucial membership support to continue making Illinois Public Media the best it can be now and into the future.

Moss Bresnahan, President and CEO
Twitter: @MossILMedia

The magical
legacy of an
entertainment
innovator



Although a polarizing figure, Walt Disney's achievements are indisputable. He created one of the most beloved cartoon characters in history, Mickey Mouse; conceived the first ever feature-length animated film, *Snow White and the Seven Dwarfs*; pioneered the integration of media and marketing with thousands of branded products; and conceived Disneyland, the world's first theme park and a three-dimensional realization of his own utopian universe.

American Experience: Walt Disney offers an unprecedented look at his life and legacy in a new two-part film that premieres at 8 pm Monday and Tuesday, Sept. 14-15, on WILL-TV.

From *Steamboat Willie* to *Pinocchio* to *Mary Poppins*, Disney's movies grew out of his own life experiences. He told stories of outsiders struggling for acceptance and belonging, while questioning the conventions of class and authority.

Even after he became successful, Disney remained driven and restless, a demanding perfectionist who was a study in contrasts. He wanted his films to make people feel deeply, yet he often buried his own emotions. Aspiring to create great artistic films, he felt he wasn't taken seriously by the movie industry, and was stung when critics panned his productions. Never satisfied with his previous efforts, Disney always pushed forward to a "new adventure," but his attention to detail and quest for innovation frequently meant delays and cost overruns.

The film features rare archival footage from the Disney vaults, scenes from some of his greatest films, and interviews with biographers and historians, animators and artists who worked on *Snow White* and other early films, as well as family members and designers who helped create Disneyland.

AMERICAN EXPERIENCE

WALT
DISNEY

Date change for Vintage Vinyl

To get the wonderful location at Fluid Event Center with plenty of free parking meant we had to change the Vintage Vinyl sale date to Saturday, Oct. 3—the sale will *not* be Sept. 26 as announced in the August *Patterns* issue.

Please bring your donations of CDs, records and DVDs, as well as stereo equipment, turntables, speakers, CD and DVD players in working order to any of the following dropoff sites from Sept. 1-25.

Busey Bank locations during regular bank hours:

- 909 W. Kirby Ave., Champaign
- 3002 W. Windsor Rd., Champaign
- 2710 S. Philo Rd., Urbana
- 201 W. Main St., Urbana

Fluid Event Center from 10 am-5 pm weekdays

- 601 N. Country Fair Dr., Champaign



Vintage Vinyl

Each item you donate to the Vintage Vinyl sale benefits Illinois Public Media's Illinois Radio Reader, which provides news and information to blind and visually impaired residents of central Illinois. Learn more at will.illinois.edu/illinoisradioreader.

Sale hours on Oct. 3 are 8-11 am with a \$5 fee; and 11 am-6 pm with free admission. If you have questions, please contact Kathie Spegal, event organizer and Illinois Radio Reader's coordinator, at spegal@illinois.edu, or at 217-333-6503.

Now find *Environmental Almanac* online

In addition to accessing the weekly program on WILL-AM 580 (4:45 pm and 6:45 pm Thursdays) or listening live online at will.illinois.edu/am/willplayer/, you can also find the program and its archives on the WILL website.

"I'm delighted that current listeners have access to **Environmental Almanac** this way, and I'm hopeful we can reach others who have yet to discover it," said producer Rob Kanter (right), a lecturer at the U of I School of Earth, Society and Environment.

Kanter says the most gratifying feedback he receives about the show and his weekly companion column in *The News-Gazette* is when people are inspired to directly engage with the natural world, whether observing turtles at the Second Street Basin over the lunch hour or taking a trip in the fall to witness the spectacle of sandhill crane migration.



"I also find it heartening to hear from listeners and readers who feel supported in their own efforts to protect the environment by preserving prairie or promoting the use of renewable energy," Kanter said.

Getting underway with fall's new TV programs

The Great British Baking Show is back for a 10-part second season starting Sunday, Sept. 6, at 6 pm, on WILL-TV. This time, the show welcomes 13 contestants—from space engineer to student, teacher to dentist, psychologist to carpenter—to the battle to be named the U.K.'s best amateur baker. Mel Giedroyc and Sue Perkins coax them through their signature, technical and showstopper challenges under the scrutiny of judges Mary Berry and Paul Hollywood (right).



Photo: Courtesy of Des Willie; ©Love Productions

And experience the inspiring rebirth of an African wilderness through the eyes of Emmy Award-winning wildlife filmmaker Bob Poole (right) in the six-part **Gorongosa Park—Rebirth of Paradise**. Darting lions, wrestling crocs, facing down angry elephants—it's all part of a day's work as he joins the battle to renew a legendary national park. The first two parts air at 7 and 8 pm Tuesday, Sept. 22.



Photo: Courtesy of Gina Poole / Off the Fence B.V

Then, with the 150th anniversary of Abraham Lincoln's assassination and the end of the Civil War this year, PBS is broadcasting a newly restored high definition version of Ken Burns' 1990 masterpiece, **The Civil War**. The nine-part series will air at 8 pm over five consecutive nights, Sept. 7-11.

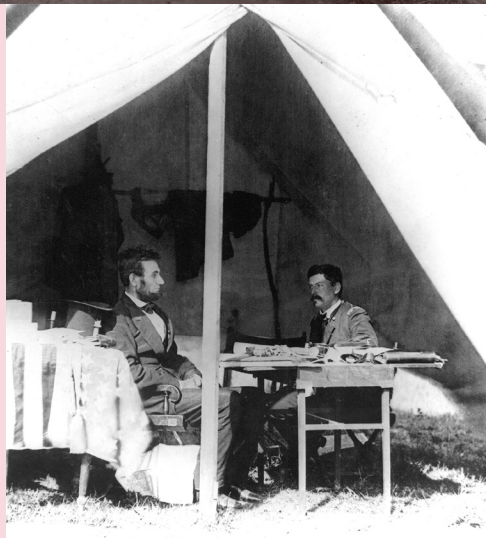


Photo: Courtesy of Library of Congress

In Their Own Words features **Jim Henson**

A new three-part series uses celebrities' most memorable quotes to frame their life stories. In addition to Queen Elizabeth II (8 pm Sept. 1) and Muhammad Ali (7 pm Sept. 8), the program features *Sesame Street*'s Jim Henson in the episode at 7 pm Sept. 15.

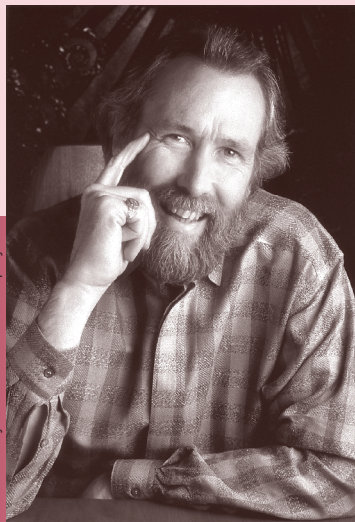


Photo: Courtesy of The Jim Henson Company

weekdays

6 am**NPR Morning Edition**

with Renee Montagne, Steve Inskeep and David Greene

9 am**Classic Mornings with Vic Di Geronimo**

Join Vic for music and companionship and make each morning a classic morning!

Noon**Afternoon Classics**

Jeff Esworthy, Julie Amacher, Lynn Warfel and Mindy Ratner keep you company throughout the afternoon. Garrison Keillor's **The Writer's Almanac** is at 1:01. **NPR News Headlines** at 3:01.

5 pm**NPR All Things Considered**

with Robert Siegel, Audie Cornish, Kelly McEvers and Ari Shapiro

7 pm**The Evening Concert**

Great performances from the great concert venues. Also on Sundays from 7-9 pm. *Listings are subject to change.*

Monday:**Music Mountain 2014**

- 9/7 **Blair String Quartet**
Haydn: String Quartet in G Major, Opus 77, No. 1
Mendelssohn: String Quartet, Opus 44, No. 1
- 9/14 **Shanghai String Quartet**
Haochen Zhang, piano
Brahms: Three Intermezzi for Piano, Op. 117
Beethoven: String Quartet, Op. 135
Brahms: Piano Quartet in G Minor, Op. 25
- 9/21 **Orion String Quartet**
Peter Serkin, piano
Haydn: String Quartet in D Major, Op. 76, No. 5
Brahms: Quintet for Piano & Strings in F minor
- 9/28 **Cassatt String Quartet**
Ursula Oppens, piano
Dvorak: String Quartet in F major, "American"
Franck: Piano Quintet in F minor

Tuesday:**Chicago Symphony Orchestra**

- 9/1 **Muti Conducts Respighi**
Martucci: Notturmo
Respighi: Feste romane Mendelssohn: Symphony No. 4 ("Italian")
- 9/8 **Salonen Conducts Tristan**
Wagner: Tristan and Isolde Introduction to Act I
Wagner: Tristan and Isolde Act II
- 9/15 **Muti Conducts the Pathétique**
Scriabin: Symphony No. 2
Tchaikovsky: Symphony No. 6 (Pathétique)
- 9/22 **Yo-Yo Ma Plays Dvorak**
Moncayo: Huapango
Beethoven: Symphony No. 2
Dvorak: Cello Concerto
- 9/29 **Muti Conducts Tchaikovsky**
Stephanie Jeong, violin; Kenneth Olsen, cello;
Jonathan Biss, piano
Beethoven: Triple Concerto
Tchaikovsky: Symphony No. 2 (Little Russian)

Wednesday:**San Francisco Symphony**

- 9/2 Michael Tilson Thomas, conductor
Gil Shaham, violin
Gamelan Sekar Jaya (gamelan ensemble)
Traditional: Lelambatan Tabuh Pat Jagul
Prokofiev: Violin Concerto No. 2 in G minor, Op. 63
- 9/9 Michael Tilson Thomas, conductor
Toby Spence, tenor; Robert Ward, horn
Copland: Danzón cubano
Britten: Serenade for Tenor, Horn, and Strings, Op. 31
Mozart: Divertimento in D major, K. 251
- 9/16 Michael Tilson Thomas, conductor
Nadine Sierra, soprano
Mozart: Three arias from Zaïde, K. 344
Schumann: Symphony No. 3
- 9/23 Michael Tilson Thomas, conductor
Gil Shaham, violin
Stravinsky: Violin Concerto in D major
Stravinsky: The Rite of Spring [1947 revision]
- 9/30 TBA

Thursday:**The New York Philharmonic This Week**

- 9/3 **The Artistry of Zubin Mehta**
Highlights from:
Mozart: Symphony No. 25
Furtwangler: Furtwangler Symphony No. 2 (Scherzo)
- 9/10 Alan Gilbert, conductor
Dorothea Röschmann, soprano; Michelle DeYoung, mezzo-soprano; New York Choral Artists, Joseph Flummerfelt, director
Mahler: Symphony No. 2, "Resurrection"
- 9/17 **Pierre Boulez at 90**
Highlights from:
Boulez: Pli selon Pli
Debussy: La Mer
- 9/24 Kurt Masur, music director emeritus
Highlights from:
Wagner: Die Meistersinger von Nuremberg (excerpts)
Mozart: Symphony No. 41
Beethoven: Leonore No. 3 Overture

Friday:**Prairie Performances**

Concerts are subject to availability.
Concerts from the University of Illinois, to be announced.

9 pm**Night Music**

Gillian Martin, Bob Christiansen, Ward Jacobson, Scott Blankenship or John Zech keep you company through the night and into the morning. **NPR News Headlines** at 9:01.

saturdays

7 am**NPR Weekend Edition**

with Scott Simon

9 am**Classics By Request**

Submit requests to John Frayne at classreq@illinois.edu or **217-300-4319**.

Garrison Keillor's **The Writer's Almanac** at 9:01.
NPR News Headlines at 10:01.

11 am

Classics of the Phonograph

John Frayne's weekly exploration of memorable recordings from the 20th century.

- 9/5 George Szell Conducts the Symphonies of Robert Schumann
- 9/12 Pablo Casals and Nathan Milstein Go Solo on Bach Suites
- 9/19 Itzak Perlman's 1980 Recording of Beethoven's Violin Concerto
- 9/26 Violist William Primrose's Recording of Walton's Concerto and Vaughan Williams "Flos Campi"

Noon

Afternoon at the Opera

The San Francisco Opera series continues. This month after the opera, we will present the Gilbert and Sullivan Festival.

- 9/5 **MADAME BUTTERFLY** (Puccini). Nicola Luisotti, cond, with Patricia Racette (Cio-Cio-San), Brian Jagde (Pinkerton), Brian Mulligan (Sharpless), and the San Francisco Opera Ensemble.
Gilbert and Sullivan: **THE GONDOLIERS**
- 9/12 **NORMA** (Bellini). Nicola Luisotti, cond, with Sondra Radvanovsky (Norma), Jamie Barton (Adalgisa), Russell Thomas (Pollione), and the San Francisco Opera Ensemble.
Gilbert and Sullivan: **IOLANTHE**
- 9/19 **SUSANNAH** (Floyd). Karen Kamensek, cond, with Patricia Racette (Susannah), Brandon Jovanovich (Polk), Raymond Aceto (Rev. Olin Blitch), and the San Francisco Opera Ensemble.
Gilbert and Sullivan: **PATIENCE**
- 9/26 **A MASKED BALL** (Verdi). Nicola Luisotti, cond, with Ramon Vargas (Riccardo), Julianna Di Giacomo (Amelia), Heidi Stober (Oscar), Thomas Hampson (Renato), Dolora Zajick (Ulrica), and the San Francisco Opera Ensemble.
Gilbert and Sullivan: **THE MIKADO**

4 pm

NPR All Things Considered

5 pm

A Prairie Home Companion

Garrison Keillor and friends present music, skits, and the latest news from Lake Wobegon. **[Also Sundays at 2 pm]**

7 pm

The Midnight Special

Rich Warren presents folk music and farce, show tunes and satire, traditional and contemporary with gentle irreverence and candid observation.

9 pm

Classics All Night

Bob Christiansen and Scott Blankenship keep you company Saturday night and into Sunday morning. **NPR News Headlines** at 10:01.

sundays

7 am

NPR Weekend Edition

with Rachel Martin

9 am

Sunday Baroque

With host Suzanne Bona
Garrison Keillor's **The Writer's Almanac** at 9:01.

1 pm

The Record Shelf

2 pm

A Prairie Home Companion

4 pm

NPR All Things Considered

5 pm

Classical Music

Mindy Ratner and Valerie Kahler are your hosts.

7-8 pm

The Evening Concert

Chamber Music Society of Lincoln Center

- 9/6 **Haydn String Quartet**
Jerusalem Quartet
Haydn: Quartet in C major for Strings, Op. 33, No. 3 "The Bird"
- 9/13 **Brahms String Quintet**
Brahms: Quintet in G major for Two Violins, Two Violas, and Cello, Op. 111
Philip Setzer, violin; Shmuel Ashkenasi, violin; Richard O'Neill, viola; Arnaud Sussmann, viola; Paul Watkins, cello
- 9/20 **Borodin**
Jerusalem Quartet
Borodin: Quartet No. 2 in D major for Strings
- 9/27 **End of Time**
Messiaen: Quatuor pour la fin du temps (Quartet for the End of Time) for Clarinet, Violin, Cello and Piano
Jörg Widmann, clarinet; Nicolas Dautricourt, violin; Nicolas Altstaedt, cello; Gilles Vonsattel, piano

8-9 pm

The Evening Concert

Spoleto Chamber Music Series (new season)

- 9/6 Brahms: Hungarian Dance No. 1 in G minor (Four Hands)
Stephen Prutsman and Pedja Muzijevic, piano
Schubert: Grand Duo for Violin and Piano in A major, D. 574
Livia Sohn, violin and Stephen Prutsman, piano
- 9/13 Golijov: String Quartet (2011); St. Lawrence String Quartet
von Weber: Grand Duo Concertante in E-flat major, Op. 48
Todd Palmer, clarinet, and Pavel Kolesnikov, piano
- 9/20 Fauré: "Élégie," Op. 24
Andres Diaz, cello, and Stephen Prutsman, piano
Ravel: La Valse
Pedja Muzijevic and Pavel Kolesnikov, piano
- 9/27 Dvořák: Piano Quintet in A major, Op. 81
Pedja Muzijevic, piano, and the Brentano String Quartet

10 pm

Harmonia

Angela Mariani presents Baroque and early music. **NPR News Headlines** at 10:01.

11 pm

The Romantic Hours

Music, poetry and romance with Mona Golabek.

midnight

Classical Music

willfm
101.1 and 90.9 HD2

weekdays

6-9 am

Classical Music

9 am-noon

**Classic Mornings
with Vic Di Geronimo**

Join Vic for music and companionship and make each morning a classic morning!

Noon-overnight

Classical Music;

Fridays 7-9,

Prairie Performances

(see listings page 4)

Saturdays

7-9 am

Classical Music

9-11 am

Classics by Request

John Frayne plays requests at this time each Saturday. Submit requests at classreq@illinois.edu or 217-300-4319.

11 am-Noon

**Classics of the
Phonograph**

John Frayne's weekly exploration of memorable recordings from the 20th century. See page 5 for listings.

Noon-overnight

Classical Music

Sundays

all day

Classical Music



Programs on WILL Radio are partially sponsored by a grant from the Illinois Arts Council, a state agency.



Photo: Courtesy of Greg Boozell

Documentary focuses on Illinois Mine War

A new radio documentary, **We Were Not Ladies. We Were Women** will air at 2 pm Sunday, Sept. 6, on WILL-AM 580. The one-hour production tells the story of 1930s labor leader Agnes Burns Wiecke (above, center) and her role in the Illinois Mine War through interviews with historians, first-person accounts, and re-enacted performances.

The 1930s were a tumultuous time for workers in the United States, and Illinois was no exception. Although the resurgence of organized labor at that time is fairly well-known, the dramatic struggle of miners in downstate Illinois is relatively obscure. Those miners were deeply divided in a bloody conflict that lasted for years and was later known as the Illinois Mine War. Instigated by John L. Lewis, a controversial figure widely regarded as a founding force of organized labor, the Mine War involved rival unions, coal companies, the state militia and even the Governor.

Through her leadership, Agnes Burns Wiecke forged a new role for women in the struggle, and confronted Lewis face-to-face to challenge the ongoing violence in Illinois' coal fields.

Expanded hosts lineup on ATC

Ari Shapiro and Kelly McEvers will join NPR **All Things Considered** veterans Robert Siegel and Audie Cornish on weekdays, and Michel Martin will become the new host of the weekend show, effective this month.

Shapiro returns from London, where he has served as a correspondent. Previously, he was NPR's White House correspondent.

McEvers has spent several years reporting from the Middle East, where she ran NPR's Beirut bureau. Most recently, she was a National Desk correspondent based on the West Coast.

Michel Martin is the former host of **Tell Me More**, a weekday show that NPR eliminated in 2014.



Photos top to bottom: Shapiro, McEvers, Martin

Monday - Friday		Saturday	Sunday
NPR Morning Edition with Brian Moline	5:00	BBC Overnight Continued	BBC World Service
	6:00	Commodity Week	Inside Europe
	6:30	State Week in Review	
	7:00	NPR Weekend Edition	NPR Weekend Edition
9:00	Car Talk		
See below	10:00	Wait Wait ... Don't Tell Me	Says You
Fresh Air NPR News 11:01	11:00	Ask Me Another	Car Talk
Here & Now hosted by Jason Croft NPR News 12:01	Noon	This American Life	Wait, Wait... Don't Tell Me
Science Friday (F)	1:00	The Moth Radio Hour	All Songs Considered
	1:30		State Week in Review
The Closing Market Report NPR News 2:01	2:00	Radiolab	51%/We Were Not Ladies; We Were Women (9/6)/Reveal (9/13)
BBC Business Daily/ Commodity Week (F)	2:30		The Treatment
The World	3:00	TED Radio Hour	On the Media
All Things Considered with Jeff Bossert	4:00	All Things Considered	All Things Considered
	5:00	Big Picture Science	The People's Pharmacy
	6:00	Commonwealth Club	Travel with Rick Steves
Fresh Air	7:00	Living on Earth	To the Best of Our Knowledge
See below (repeat of 10 am program)	8:00	Latino USA	
BBC World Service	9:00	Alternative Radio	New Dimensions
	10:00	Bookworm	Le Show
	10:30	New Letters on the Air	
	11:00	Left, Right & Center	BBC World Service
	11:30- 6 am	BBC World Service	

Bold Listing = National/International News

10 am weekdays lineup

Monday: On the Media (repeat of previous Sunday)

Tuesday: The Moth Radio Hour

Wednesday: Big Picture Science (repeat of previous Saturday)

Thursday: The TED Radio Hour (repeat of previous Saturday)

Friday: A Way with Words

Agriculture

Todd Gleason, host, Closing Market Report & Commodity Week

Opening Market Report: 8:49 am; **Mid-Morning Market Report:** 9:49 am; **Market Update:** 10:58 and 11:58 am; **Midday Market Report:** 12:55 pm; **Closing Market Report:** 2:06 pm. To listen to archived ag reports, sign up for the Illinois Public Media Ag E-newsletter, or download our agricultural podcasts, visit www.willag.org. Call 217-333-3434 for market analysis, updated at 9:15 am and 3:15 pm daily.

Illinois Public Media News

Scott Cameron, news and public affairs director

The news from Illinois Public Media's award-winning staff of reporters—Jeff Bossert, Tiffany Jolley, Jim Meadows, Hannah Meisel and Brian Moline—can be heard during **Morning Edition**, **Here & Now** and **All Things Considered**.

Weather

Monday-Friday

AM: 6:09, 6:20, 6:35, 6:50, 7:09, 7:20, 7:35, 7:50, 8:09, 8:20, 8:35, 8:50 **PM:** 12:37, 4:06, 4:35, 5:06, 5:35

Arts and Crafts—5-6 am; 11 am-noon

Sun and Wed: It's Sew Easy; Frank Clark Simply Painting Around the World

Mon and Fri: Quilting Arts; Painting the Town with Eric Dowlle

Tue and Thu: Knit and Crochet Now; Best of the Joy of Painting

Cooking—6-8 am; noon-2 pm

Sun and Wed: Mexico—One Plate at a Time; Primal Grill; Barbecue University; Ciao Italia

Mon and Fri: Sara's Weeknight Meals; Healthful Indian Flavors with Alamelu; Martin Yan's Vietnam; Taste the Islands with Chef Irie/New Scandinavian Cooking (begins 9/11)

Tue and Thur: Chef John Besh's New Orleans/ Cooking with Nick Stellino (begins 9/8); P. Allen Smith's Garden to Table; The Farm with Ian Knauer/ Dining with the Chef (begins 9/3); Christina Cooks

Travel—8-9 am; 2-3 pm

Sun and Wed: Curious Traveler; Family Travel with Colleen Kelly

Mon and Fri: Destination Anywhere Specials/Globe Trekker (begins 9/28)

Tue and Thu: Burt Wolf Travels and Traditions/Rudy Maxa's World (begins 9/17); Mineral Explorers

Gardening/Home Improvement—9-11; 3:30-5:30 pm

Mon and Fri: This Old House; Rough Cut—Woodworking with Tommy Mac; P. Allen Smith's Garden Home; Beads, Baubles and Jewels/ Craftsman's Legacy (begins 9/21)

Tue and Thu: Hometime/Woodwright's Shop (begins 9/3); Woodturning Workshop; Victory Garden; For Your Home

Wed: Ask This Old House; American Woodshop; Vintage/Scrapbook Soup (begins 9/23); Katie Brown Workshop

Sun: Ask This Old House; American Woodshop; Vintage/Scrapbook Soup (begins 9/23); Katie Brown Workshop

Weekend Marathons—5-11 am; 5-11 pm Saturday; 11 am-5 pm Sunday**Sept. 5/6 Franklin's Que**

Pitmaster Aaron Franklin offers BBQ tips.

Sept. 12/13: New York: Foods of the World

Taste the American melting pot with culinary experts.

Sept. 19/20: Hispanic Heritage

Travel to various nations for the food and music.

Sept. 26/27: On Safari

Rudy Maxa and Joseph Rosendo are your guides.

See the full Create schedule at will.illinois.edu/tv/schedule

12.2

WORLD Primetime Schedule

Monday-Friday

9:00 PBS NewsHour

10:00 Nightly Business Report

10:30 Journal

Mondays

7:00 How We Got to Now (9/7, 9/14, 9/21); Independent Lens: The Graduates (9/28)

8:00 Local USA

8:30 Film School Shorts; On Story (9/28)

11:00 How We Got to Now; Independent Lens: The Graduates (9/28)

Tuesdays

7:00 America Reframed (9/1, 9/8, 9/15, 9/29)

8:00 Global Voices (9/22)

8:30 New Environmentalists (9/1); Compadre Huashayo (9/15); Dropping Back In (9/29)

11:00 America Reframed (9/1, 9/8, 9/15, 9/29)

Wednesdays

7:00 POV (9/2); American Masters: Pedro Guerrero (9/23); 180 Days: Hartsville (9/30)

7:30 Independent Lens (9/9, 9/16)

8:00 Frontline (9/2); The Salinas Project (9/23); Schools That Change Communities (9/30)

11:00 India Awakes (9/2); Independent Lens (9/9, 9/16); Coming of Age Between Nations (9/23); 180 Days: Hartsville (9/30)

11:30 Visa Dream (9/23)

Thursdays

7:00 Skeletons of the Sahara (9/3); Chasing Shackleton (9/10); NOVA (9/17); Voces on PBS (9/24)

8:00 Rise of the Black Pharaohs (9/3); Chasing Shackleton (9/10)

8:30 Coming of Age Between Nations (9/24)

11:00 NOVA (9/3); Chasing Shackleton (9/10); Secrets of the Dead (9/17, 9/24)

Fridays

7:00 In Their Own Words: Queen Elizabeth II (9/4); American Experience: Walt Disney, part 1 (9/18); Voces on PBS (9/25)

7:30 Independent Lens: Trials of Muhammad Ali (9/11)

8:00 Secrets of Althorp—The Spencers (9/4); Voces on PBS (9/25)

11:00 Secrets of Westminster (9/4); In Their Own Words: Muhammad Ali (9/11); American Experience: Walt Disney (9/18); Pioneers of Television (9/25)

Saturdays

7:00 Pioneers of Television (9/5, 9/12); American Experience: Walt Disney, part 2 (9/19); Gorongosa Park (9/26)

8:00 Pioneers of Television (9/5, 9/12); Gorongosa Park (9/26)

9:00 America Reframed; POV: Don't Tell Anyone (9/26)

10:30 New Environmentalists (9/5); Compadre Huashayo (9/19); Coming of Age Between Nations (9/26)

11:00 Pioneers of Television (9/5, 9/12); American Experience: Walt Disney, part 2 (9/19); Gorongosa Park (9/26)

Sundays

7:00 Nature (9/13, 9/20, 9/27)

7:30 American Masters: Althea (9/6)

8:00 Hava Nagila (9/13); In Their Own Words: Jim Henson (9/20); On Two Fronts: Latinos & Vietnam (9/27)

9:00 African Americans: Many Rivers to Cross (9/6, 9/13); POV: Tea Time (9/20)

9:30 POV: Art & Craft (9/27)

10:00 India Awakes (9/6); Independent Lens: Brakeless (9/13); POV: Reportero (9/20)

11:00 One Night in March (9/6); Nature

11:30 American Masters: Althea (9/6)

See the full World schedule at will.illinois.edu/tv/schedule

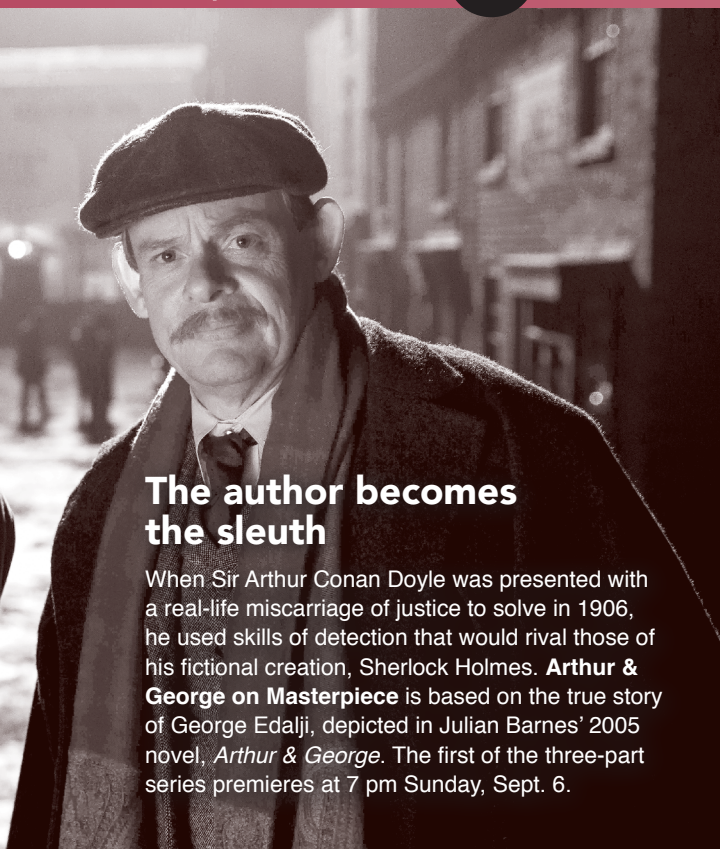
Monday - Friday		Saturday	Sunday	
Market to Market (M) Nightly Business Report (T-F)	5:00	Barney & Friends	Sid the Science Kid	
Body Electric (M,W,F) Sit and Be Fit (T, Th)	5:30	Angelina Ballerina	Peg + Cat	
Odd Squad	6:00	Curious George	Curious George	
Wild Kratts	6:30	Curious George	Curious George	
Curious George	7:00	Daniel Tiger	Daniel Tiger	
Curious George	7:30	Daniel Tiger	Daniel Tiger	
Daniel Tiger's Neighborhood	8:00	Sesame Street	Sesame Street	
Daniel Tiger's Neighborhood	8:30	Dinosaur Train	Dinosaur Train	
Sesame Street	9:00	Thomas and Friends	Cyberchase	
	9:30	Bob the Builder	Space Racers	
Dinosaur Train	10:00	Motorweek	Charlie Rose: The Week	
Dinosaur Train	10:30	Growing a Greener World	To the Contrary	
Peg + Cat	11:00	Mid-American Gardener	America's Heartland	
Peg + Cat	11:30	Victory Garden	Market to Market	
Super WHY!	Noon	America's Test Kitchen	The McLaughlin Group	
Thomas & Friends	12:30	Cook's Country	Religion + Ethics Newsweekly	
Sewing Programs ▼	1:00	Eat! Drink! Italy! with Vic Rallo	Specials 9/6 1:00 Great Performances at the Met: Cavalleria Rusticana/Pagliacci 4:00 Doc Martin: The Tameless of a Wolf 9/13 1:00 Living Dream: 100 Years of Rocky Mountain National Park 2:30 Raptors! Kings of the Sky 3:00 Great Performances: Vienna Philharmonic Summer Night Concert 4:30 Vicious 9/20 1:00 The 25,000 Mile Love Story 2:00 The Rock & Roll Hall of Fame Museum 3:00 Restoration Neon 4:00 Doc Martin 9/27 1:00 Unseen Everglades: Inside A Legendary Wilderness 2:00 Live from Lincoln Center: New York Philharmonic Opening Gala with Lang Lang 4:00 Doc Martin	
Painting and How To Programs ▼	1:30	Martin Yan's Taste of Vietnam		
Sesame Street	2:00	Cooking with Nick Stellino		
Curious George	2:30	Sara's Weeknight Meals		
Arthur	3:00	Steven Raichlen's Project Smoke		
Odd Squad	3:30	Hometime		
Wild Kratts	4:00	This Old House Hour		
Word Girl	4:30			
BBC World News	5:00	PBS NewsHour Weekend		PBS NewsHour Weekend
Nightly Business Report	5:30	Rick Steves' Europe		BBC Newsnight
PBS NewsHour	6:00	Lawrence Welk	See listings	

1:00 pm Sewing

M: Fons & Porter's Love of Quilting
 Tu: Sewing with Nancy
 W: Fit 2 Stitch
 Th: Quilting Arts
 F: It's Sew Easy

1:30 pm Painting and How To

M: Beauty of Oil Painting
 Tu: Paint This with Jerry Yarnell
 W: Wyland's Art Studio
 Th: Garden Smart
 F: Painting with Paulson



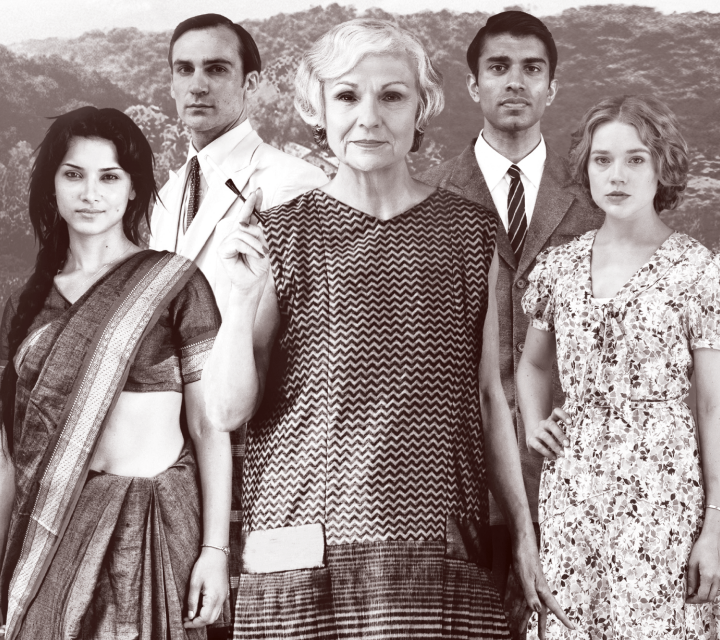
The author becomes the sleuth

When Sir Arthur Conan Doyle was presented with a real-life miscarriage of justice to solve in 1906, he used skills of detection that would rival those of his fictional creation, Sherlock Holmes. **Arthur & George on Masterpiece** is based on the true story of George Edalji, depicted in Julian Barnes' 2005 novel, *Arthur & George*. The first of the three-part series premieres at 7 pm Sunday, Sept. 6.



The Raj, romance and revolution

Set in the twilight era of British rule in India, **Indian Summers on Masterpiece** explores the collision of the high-living English ruling class with the local people agitating for Indian independence. As the drama unfolds, the two sides alternately clash and merge in an intricate game of power, politics and passion. The nine-part series begins at 8 pm Sunday, Sept. 27.



Taking opposing sides

On Two Fronts: Latinos & Vietnam (9 pm Tuesday, Sept. 22) examines the Latino experience during the Vietnam War through the eyes of two siblings, Everett and Delia Alvarez, who stood on opposite sides of the conflict, one as a prisoner of war and the other protesting at home.



Celebrating trailblazing women

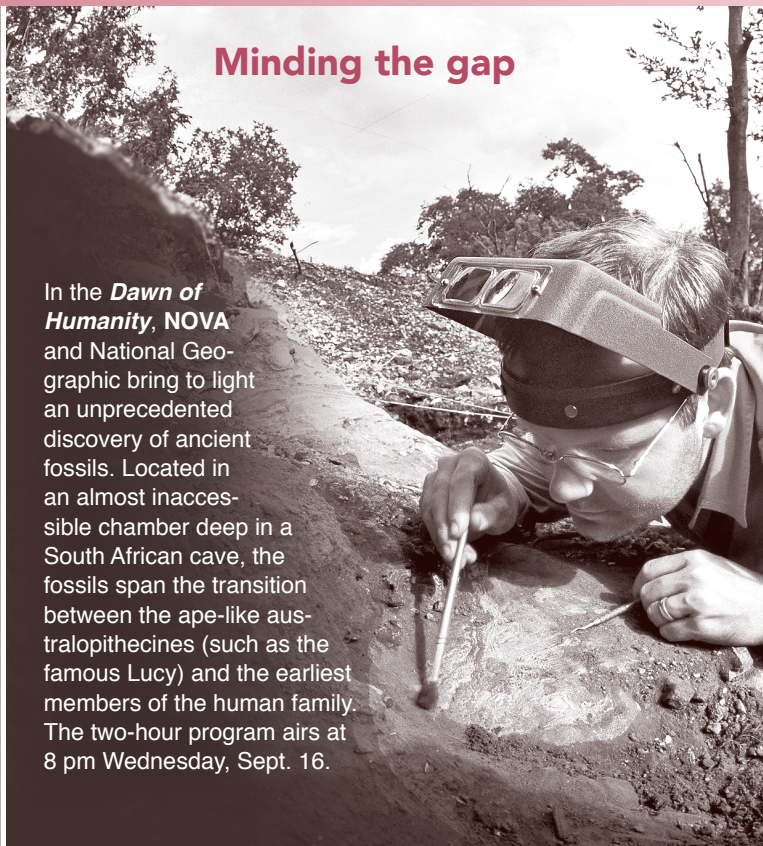
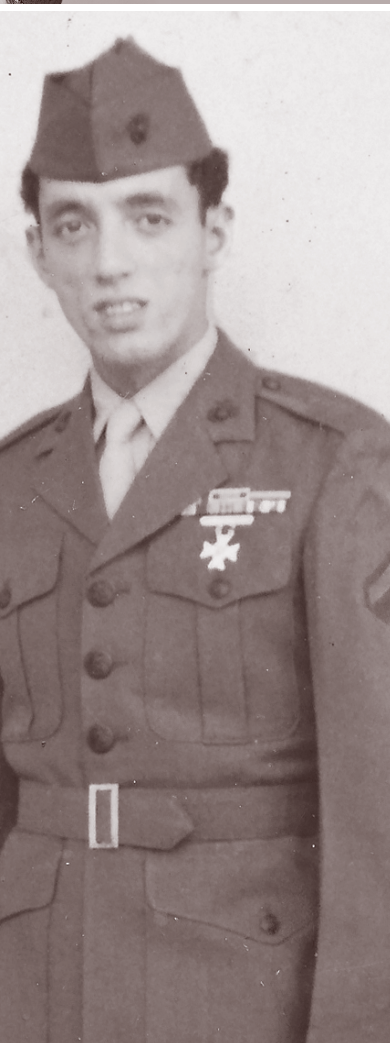
In *The Women's List*, *American Masters* interviews 15 trailblazers in their respective fields—from Margaret Cho and Betsey Johnson to Madeleine Albright (left) and Alicia Keys—to capture their struggles against discrimination and overcoming challenges to make their voices heard and their influence felt. It airs at 8 pm Friday, Sept. 25.

Minding the gap

In the *Dawn of Humanity*, NOVA and National Geographic bring to light an unprecedented discovery of ancient fossils. Located in an almost inaccessible chamber deep in a South African cave, the fossils span the transition between the ape-like australopithecines (such as the famous Lucy) and the earliest members of the human family. The two-hour program airs at 8 pm Wednesday, Sept. 16.

It's time to eat

Journey with Phil Rosenthal (below, right), creator of the TV show *Everybody Loves Raymond*, as he learns from the food style setters who keep their communities' traditions alive and also create new ones. With ample doses of his trademark humor, Rosenthal visits a variety of kitchens, from one of the least expensive Michelin-starred restaurants in Asia to a Los Angeles bakery that's training former gang members. The first episode of the six-part *I'll Have What Phil's Having* airs at 9 pm Monday, Sept. 28.



WILL-TV

Friday Night Public Affairs

- 7:00 Washington Week
7:30 Charlie Rose: The Week

BritCom Saturday Night

- 8:00 As Time Goes By
8:30 Vicar of Dibley
9:00 Moone Boy
9:30 Spy
10:00 Doctor Who

1 Tuesday

- 7:00 **Big Blue Live** (TV-PG)
Part 2 of 3. Timed to capture a once-a-year confluence of marine creatures in California's Monterey Bay, four correspondents report from aboard research vessels and the Monterey Bay Aquarium.
- 8:00 **In Their Own Words** (TV-PG)
Part 1 of 3: *Queen Elizabeth II*. Follow Elizabeth from her youth to her uncle's abdication, her father's coronation, her experience during World War II, her sudden ascension to the throne and her eventful reign of more than 60 years. *Repeated midnight; 1 am 9/2; and 3 am 9/3.*
- 9:00 **Frontline**
Putin's Way.
- 10:00 **Big Blue Live** (TV-PG)
West Coast feed.
- 11:00 **Charlie Rose**

2 Wednesday

- 7:00 **Big Blue Live** (TV-PG)
Part 3 of 3. Timed to capture a once-a-year confluence of marine creatures in California's Monterey Bay, four correspondents report from aboard research vessels and the Monterey Bay Aquarium.
- 8:00 **NOVA** (TV-PG)
Bigger Than T. Rex. Bringing together experts in paleontology, geology, climatology and paleobotany, this **NOVA**/National Geographic special brings to life the lost world over which Spinosaurus reigned more than 65 million years ago. *Repeated 1 am 9/3; 3 am 9/4; and midnight 9/5.*
- 9:00 **Earth: A New Wild** (TV-PG)
Oceans. Learn about the vibrant community that's providing solutions to help restore the oceans. *Repeated 2 am 9/3; and 4 am 9/4.*
- 10:00 **Big Blue Live** (TV-PG)
West Coast feed.
- 11:00 **Charlie Rose**

3 Thursday

- 7:00 **Mid-American Gardener** (TV-G)
Repeated 11 am Saturday.
- 7:30 **Ask This Old House** (TV-G)
Lightning Protection/Reverse Osmosis Water Filter Install.
- 8:00 **Doc Martin** (TV-PG)
The Tameness of a Wolf. Ruth is invited on Radio Portwenn and attracts an unwanted mystery admirer; Doc and Louisa find a replacement nanny; one of Louisa's pupils pens

a bad review of Bert's restaurant in the school magazine. *Repeated 4 pm 9/6.*

- 9:00 **Father Brown**
The Lair of the Libertines. Father Brown and his friends find themselves stranded with a group of hedonists at Hotel Cuba.
- 10:00 **Last of the Summer Wine**
- 10:30 **Newsline**
- 11:00 **Charlie Rose**

4 Friday

- 7:00 **Friday Night Public Affairs**
See left.
- 8:00 **American Masters** (TV-G)
Althea. Discover the story of Althea Gibson, the first African American to play and win Wimbledon and the U.S. Nationals. *Repeated 1 am 9/5; and 3 am 9/7.*
- 9:30 **American Masters** (TV-PG)
Billie Jean King. This major player in changing our cultural landscape shares her story with perspective added by Rosie Casals, Chris Evert, Venus Williams, Gloria Steinem, Elton John and others. *Repeated 2:30 am 9/5.*
- 11:00 **Charlie Rose**

5 Saturday

- 7:00 **Antiques Roadshow** (TV-G)
Myrtle Beach, S.C. Part 2 of 3. *Repeated from 8 pm 7/31.*
- 8:00 **Britcom Saturday Night**
See above left.
- 11:00 **Front and Center** (TV-PG)
Richard Thompson.

6 Sunday

- 6:00 **The Great British Baking Show**
Season 2. Part 1 of 10: *Cakes.* See article page 3. *Repeated 3 am 9/8.*
- 7:00 **Arthur & George on Masterpiece** (TV-PG)
Part 1 of 3. See article page 10. Asked to clear a man convicted of animal mutilation, Sir Arthur Conan Doyle finds there's more to the case than meets the eye. *Repeated midnight; and 4 am 9/8.*
- 8:00 **Masterpiece Mystery!** (TV-14) (DVS)
Sherlock, Series III: The Empty Hearse. When Sherlock returns, Watson may be regretting what he wished for. *Repeated 1 am 9/7.*
- 9:30 **Vicious** (TV-14)
Ballroom. When the group joins a ballroom dancing class, Stuart quickly becomes the teacher's favorite, leaving Freddie in a huff, while Violet becomes a hit with the amorous teacher in other ways. *Repeated 2:30 am and 4:30 am 9/7; 3:30 am 9/12; and 4:30 pm 9/13.*
- 10:00 **Globe Trekker** (TV-PG)
Puerto Rico.
- 11:00 **Music City Roots: Live from the Loveless Café**
Sister Sadie/The Lonely Biscuits/Striking Matches/Williams & Co./Robert Shirey Kelly.

7 Monday

- 7:00 **Antiques Roadshow** (TV-G)
Myrtle Beach, S.C. Part 3 of 3. Highlights include an 1884 Courier & Ives print; a Pennsylvania folk art whirligig; and a 1936 first edition

of *Gone With the Wind*. Repeated midnight; 4 am 9/9; 4 am 9/11; 7 pm 9/12; and 3 am 9/13; and 4 am 9/14.

8:00 The Civil War (TV-PG)

Part 1 of 9. *The Cause—1861*. Significant events include John Brown's rebellion at Harper's Ferry, the election of Abraham Lincoln in 1860, the firing on Fort Sumter and the jubilant rush to arms on both sides. Repeated 1 am 9/8.

10:00 Last of the Summer Wine

10:30 Newsline

11:00 Charlie Rose

8 Tuesday

7:00 In Their Own Words (TV-PG)

Part 2 of 3. *Muhammad Ali*. Follow the boxer's path from a gym in Louisville to success, conversion to Islam, opposition to the draft, exile from the ring, comeback fights, Parkinson's disease and his inspirational re-emergence at the Atlanta Olympics. Repeated midnight; 2 am 9/13; and 3 am 9/14.

8:00 The Civil War (TV-PG)

Part 2 of 9. *A Very Bloody Affair—1862*. The birth of modern warfare and the transformation of Lincoln's war to preserve the Union into a war to emancipate the slaves. Repeated 1 am 9/9.

The Civil War (TV-PG)

Part 3 of 9. *Forever Free—1862*. Convinced that emancipation was morally and militarily crucial to the future of the Union, Lincoln waited for a Union victory before issuing his proclamation.

10:30 Newsline

11:00 Charlie Rose

9 Wednesday

7:00 Nature (TV-PG) (DVS)

Wolverine: Chasing The Phantom. Enter the secretive world of the largest and least known member of the weasel family to learn about one of the most efficient and resourceful carnivores on Earth. Repeated midnight; and 1 am 9/13.

8:00 The Civil War (TV-PG)

Part 4 of 9. *Simply Murder—1863*. A look at the Union disaster at Fredericksburg, along with battles at Chancellorsville and Vicksburg, plus the northern opposition to Lincoln's Emancipation Proclamation. Repeated 1 am 9/9.

The Civil War (TV-PG)

Part 5 of 9. *The Universe of Battle—1863*. The Battle of Gettysburg, the fall of Vicksburg, the New York draft riots, the first use of black troops and the western battles at Chickamauga and Chattanooga.

11:00 Charlie Rose

10 Thursday

7:00 Mid-American Gardener (TV-G)

Repeated 11 am Saturday.

7:30 Ask This Old House (TV-G)

Exterior Lighting Install/Main Water Shutoff Replacement.

8:00 The Civil War (TV-PG)

Part 6 of 9. *Valley of the Shadow of*

Death—1864. A comparison of Grant and Lee; a look at the ghastly hospitals in the North and South; Sherman's march through northern Georgia. Repeated 1 am 9/11.

The Civil War (TV-PG)

Part 7 of 9. *Most Hallowed Ground—1864*. The 1864 presidential campaign; opinion in the North turns against the president and the war; Lee's Arlington mansion is turned into a Union military hospital.

10:30 Newsline

11:00 Charlie Rose

11 Friday

7:00 Friday Night Public Affairs

See page 12.

8:00 The Civil War (TV-PG)

Part 8 of 9. *War Is All Hell—1865*. Sherman's March to the Sea brings war to the heart of Georgia and the Carolinas and spells the end of the Confederacy; Petersburg and Richmond fall to Grant's army; Lee surrenders. Repeated 1 am 9/12.

The Civil War (TV-PG)

Part 9 of 9. *The Better Angels of Our Nature—1865*. Five days after Lee's surrender at Appomattox, Lincoln is assassinated; the nation mourns its leader.

10:30 Newsline

11:00 Charlie Rose

12 Saturday

7:00 Antiques Roadshow (TV-G)

Myrtle Beach, S.C. Part 3 of 3. Repeated from 7 pm 9/7.

8:00 Britcom Saturday Night

See page 12.

11:30 Front and Center (TV-PG)

Richie Sambora.

13 Sunday

6:00 The Great British Baking Show

Season 2. Part 2 of 10: *Bread*. See article page 3. Repeated 4 am 9/15.

7:00 Arthur & George on Masterpiece (TV-PG)

Part 2 of 3. See article page 10. Sir Arthur and Woodie get a shock after they order their driver to follow a particular carriage; matters reach a crisis with Jean. Repeated midnight; and 3 am 9/15.

8:00 Masterpiece Mystery! (TV-PG) (DVS)

Sherlock, Series III: The Sign of Three. Sherlock faces the challenge of delivering a speech on Watson's wedding day. Repeated 1 am 9/14; and 3 am 9/16.

9:30 Vicious (TV-14)

Stag Do. Finding themselves both single, Violet and Ash consider dating new people. Violet has already met someone on the Internet, while Ash's ex, Chloe, returns. Repeated 2:30 am 9/14; and 3:30 am 9/19.

10:00 Globe Trekker (TV-PG)

The Netherlands.

11:00 Music City Roots: Live from the Loveless Café (TV-PG)

April Verch/Black Violin/The Hillbenders/Matt Butcher/The Greencards.

WILL-TV

14 Monday

- 7:00 Antiques Roadshow** (TV-G)
Survivors. Tales of rescues and close calls for treasures that have endured wars, natural disasters, fires and more. *Repeated midnight; 4 am 9/17; and 7 pm 9/19.*
- 8:00 American Experience** (TV-PG) (DVS)
Walt Disney. Part 1 of 2. See article page 1. *Repeated 1 am 9/15; and 2 am 9/20.*
- 10:00 Last of the Summer Wine**
- 10:30 Newsline**
- 11:00 Charlie Rose**

15 Tuesday

- 7:00 In Their Own Words** (TV-PG)
Jim Henson. A look at Henson's career, from his Muppets in the 1950s to his commercial work and network appearances, his breakthrough with **Sesame Street** and *The Muppet Show*, his fantasy films and his death in 1990. *Repeated midnight.*
- 8:00 American Experience** (TV-PG) (DVS)
Walt Disney. Part 2 of 2. See article page 1. *Repeated 1 am 9/16; and 3 am 9/21.*
- 10:00 Last of the Summer Wine**
- 10:30 Newsline**
- 11:00 Charlie Rose**

16 Wednesday

- 7:00 Nature** (TV-PG) (DVS)
The Sagebrush Sea. A spartan landscape of primarily sagebrush supports an ecosystem of more than 170 species of birds and mammals, including the greater sage-grouse. *Repeated midnight; 2 am 9/18; and 1 am 9/20.*
- 8:00 NOVA** (TV-G) (DVS)
Dawn of Humanity. See article page 11. *Repeated 1 am 9/17; 3 am 9/18; and midnight 9/20.*
- 10:00 Last of the Summer Wine**
- 10:30 Newsline**
- 11:00 Charlie Rose**

17 Thursday

- 7:00 Mid-American Gardener** (TV-G)
Repeated 11 am Saturday.
- 7:30 Ask This Old House** (TV-G)
Mailbox Replacement/Window Anatomy/Old Door Re-Use.
- 8:00 Doc Martin** (TV-PG)
Nobody Likes Me. Martin is coerced into taking James to playgroup, while Ruth is having problems with her new neighbor. *Repeated 4 pm 9/20.*
- 9:00 Father Brown**
The Truth in the Wine. When a body is discovered in a vineyard, Father Brown must search for the murderer amongst a group of suspects all seeking to reinvent themselves.
- 10:00 Last of the Summer Wine**
- 10:30 Newsline**
- 11:00 Charlie Rose**

18 Friday

- 7:00 Friday Night Public Affairs**
See page 12.

- 8:00 American Masters** (TV-PG)
Pedro E. Guerrero: A Photographer's Journey. Discover the life and work of this Mexican-American photographer who collaborated with Frank Lloyd Wright and sculptors Alexander Calder and Louise Nevelson. *Repeated 1 am 9/19.*
- 9:00 POV** (TV-14)
Cutie and the Boxer. This candid New York tale explores the chaotic 40-year marriage of painter Ushio Shinohara and artist Noriko Shinohara. *Repeated 2 am 9/19.*
- 10:30 Newsline**
- 11:00 Charlie Rose**

19 Saturday

- 7:00 Antiques Roadshow** (TV-G)
Survivors. *Repeated from 7 pm 9/14.*
- 8:00 Britcom Saturday Night**
See page 12.
- 11:00 Front and Center** (TV-PG)
Hunter Hayes.

20 Sunday

- 6:00 The Great British Baking Show**
Season 2. Part 3 of 10: *Desserts.* See article page 3. *Repeated 4 am 9/22.*
- 7:00 Arthur & George On Masterpiece** (TV-PG)
Part 3 of 3. See article page 10. Sir Arthur and Woodie close in on the Wyrley Ripper; Jean makes her decision. *Repeated midnight; and 3 am 9/22.*
- 8:00 Masterpiece Mystery!** (TV-14) (DVS)
Sherlock, Series III: His Last Vow. For Sherlock, Charles Augustus Magnussen is the Napoleon of blackmail—and the one man he truly hates. *Repeated 1 am 9/21; and 1 am 9/22.*
- 9:35 Vicious** (TV-14)
Flatmates. After Freddie and Stuart have a falling out, Stuart moves in with Ash and Violet moves in with Freddie. *Repeated 2:30 am 9/21; and 2:30 am 9/22; and 3:30 am 9/27.*
- 10:03 Globe Trekker** (TV-PG)
Building England I.
- 11:00 Music City Roots: Live from the Loveless Café** (TV-PG)
Alanna Royale/Davina & The Vagabonds/Shook Twins/Wood & Wire/Stephen Sebastian.

21 Monday

- 7:00 Antiques Roadshow** (TV-G)
Rapid City, S.D. Part 1 of 3. Highlights include a suite of furniture by Thomas Molesworth from the famous "Ranch A," and signed military documents of Elvis Presley. *Repeated 7 pm 9/26.*
- 8:00 Antiques Roadshow** (TV-G)
Rapid City, S.D. Part 2 of 3. Highlights include TWA travel posters; a 1932 signed photograph of Mount Rushmore; and a Rock-Ola juke box. *Repeated midnight.*
- 9:00 POV** (TV-PG)
Don't Tell Anyone. Meet immigrant activist Angy Rivera, who shares her own experiences of being undocumented and sexually abused with today's undocumented youth.
- 10:30 Newsline**
- 11:00 Charlie Rose**

22 Tuesday

- 7:00 Gorongosa Park—Rebirth of Paradise** (TV-PG)
Part 1 of 6: Lion Mystery. See article page 3. Bob Poole joins scientist Paola Bouley as she tries to solve the baffling mystery of why Gorongosa's lion population isn't growing. *Repeated midnight; and 3 am 9/24.*
- 8:00 Gorongosa Park—Rebirth of Paradise** (TV-PG)
Part 2 of 6: Elephant Whisperer. See article page 3. Poole and his sister, Joyce, a renowned elephant expert, face charging elephants to gain insights into elephant behavior. *Repeated 1 am 9/23; and 4 am 9/24.*
- 9:00 On Two Fronts: Latinos & Vietnam** (TV-PG)
See article page 10. *Repeated 2 am and 3:30 am 9/23; and 2 am 9/27.*
- 10:30 Newsline**
- 11:00 Charlie Rose**

23 Wednesday

- 7:00 Nature** (TV-PG) (DVS)
Nature's Miracle Orphans: Second Chances. Part 1 of 2. Rescue center caregivers in Australia and Costa Rica help wild baby orphans, including koalas and three-toed sloths, get back on their feet. *Repeated midnight; 2 am 9/25; and 1 am 9/27.*
- 8:00 NOVA** (TV-PG) (DVS)
Arctic Ghost Ship. A Canadian expedition in 2014 located one of two Royal Navy ships commanded by British explorer Sir John Franklin that sunk in 1845, revealing new clues that may finally unravel what happened. *Repeated 1 am 9/24; 3 am 9/25; and midnight 9/27.*
- 9:00 Return to the Wild—The Chris McCandless Story** (TV-PG)
The story of a young American hiker, found dead in an abandoned bus in the Alaskan wilderness, who became the subject of the best-selling book, *Into the Wild*. *Repeated 2 am 9/24; and 4 am 9/25.*
- 10:00 Last of the Summer Wine**
- 10:30 Newsline**
- 11:00 Charlie Rose**

24 Thursday

- 7:00 Mid-American Gardener** (TV-G)
Repeated 11 am Saturday.
- 7:30 Ask This Old House** (TV-G)
Noisy Baseboard Heating Fix/Recessed Kitchen Lighting Install.
- 8:00 Doc Martin** (TV-PG)
The Practice Around The Corner. Mrs. Tishell returns to the village; Al and Morwenna each have an Internet dating disaster; and romance is blossoming for Bert. *Repeated 4 pm 9/27.*
- 9:00 Father Brown**
The Judgement of Man. Father Brown becomes embroiled in an audacious art heist masterminded by his adversary Flambeau, who intends to use the priest and his friends to help him settle an old score.
- 10:00 Last of the Summer Wine**
- 10:30 Newsline**
- 11:00 Charlie Rose**

25 Friday

- 7:00 Friday Night Public Affairs**
See page 12.
- 8:00 American Masters** (TV-PG)
The Women's List. See article page 11. *Repeated 1 am 9/26.*
- 9:00 POV** (TV-PG)
Art and Craft. A look at the cat-and-mouse caper of art forger Mark Landis, who has donated his expert copies to museums for 30 years, and his search for connection and respect. *Repeated 2 am 9/26.*
- 10:30 Newsline**
- 11:00 Charlie Rose**

26 Saturday

- 7:00 Antiques Roadshow** (TV-G)
Rapid City, S.D. Part 1 of 3. *Repeated from 7 pm 9/21.*
- 8:00 Britcom Saturday Night**
See page 12.
- 11:00 Front and Center** (TV-PG)
Bob DiPiero.

27 Sunday

- 6:00 The Great British Baking Show**
Season 2. Part 4 of 10: *Pies and Tarts.* See article page 3.
- 7:00 Secrets of Westminster** (TV-PG)
Go inside the hidden world of the Houses of Parliament, as well as inside Big Ben to learn more and to meet some of the people who keep the buildings running. *Repeated midnight; and 2 am 9/29.*
- 8:00 Indian Summers On Masterpiece** (TV-PG)
Part 1 of 9. See article page 10. *Repeated 1 am 9/28; and 3 am 9/29.*
- 9:30 Vicious** (TV-14)
Wedding. It's a big day, but things are far from smooth with the appearance of an unexpected guest; Penelope and Mason have difficulty with the wedding cake. *Repeated 2:30 am 9/28; and 4:30 am 9/29.*
- 10:00 Globe Trekker** (TV-PG)
Building England II.
- 11:00 Music City Roots: Live from the Loveless Café** (TV-PG)
Amos Lee/Tim O'Brien and Darrell Scott/Sam Lewis/Angel Snow/Bradford Lee Folk.

28 Monday

- 7:00 Antiques Roadshow** (TV-G)
Rapid City, S.D. Part 3 of 3. Highlights include a 1760s Chester County Pennsylvania spice chest; two sets of Frank Lloyd Wright blueprints; and a Favre Fabrique Tiffany desk lamp. *Repeated 1 am 9/29; and 4 am 9/30.*
- 8:00 Antiques Roadshow** (TV-G)
Albuquerque, N.M. Part 1 of 3. Highlights include a 1969 Woodstock jacket and program; an 1875 silk wedding gown; and a Jane Peterson oil painting. *Repeated midnight.*
- 9:00 I'll Have What Phil's Having** (TV-PG)
Tokyo. Part 1 of 6. See article page 11. Phil searches for the most delicious ramen, the sushi of his dreams and anything else that makes Tokyo a global culinary capital. *Repeated 3 am 9/30.*

WILL-TV

10:00 **Last of the Summer Wine**
10:30 **Newsline**
11:00 **Charlie Rose**

29 Tuesday

7:00 **Gorongosa Park—Rebirth of Paradise** (TV-PG)

Part 3 of 6: New Blood. See article page 3. Poole and the lion team find a cub with a grave wound and race to save her; a massive relocation mission is launched to bring back zebra and eland—Africa's largest antelope. *Repeated midnight.*

8:00 **Gorongosa Park—Rebirth of Paradise** (TV-PG)

Part 4 of 6: Hidden Worlds. See article page 3. Bob and a team of scientists estimate that the park may hold Africa's largest crocodile population; they also discover forests full of new species and unexplored caves. *Repeated 1 am 9/30.*

9:00 **Frontline**
Part 1 of 3. *My Brother's Bomber.* See article below. *Repeated 2 am 9/30.*

10:00 **Last of the Summer Wine**

10:30 **Newsline**

11:00 **Charlie Rose**

30 Wednesday

7:00 **Nature** (TV-PG) (DVS)

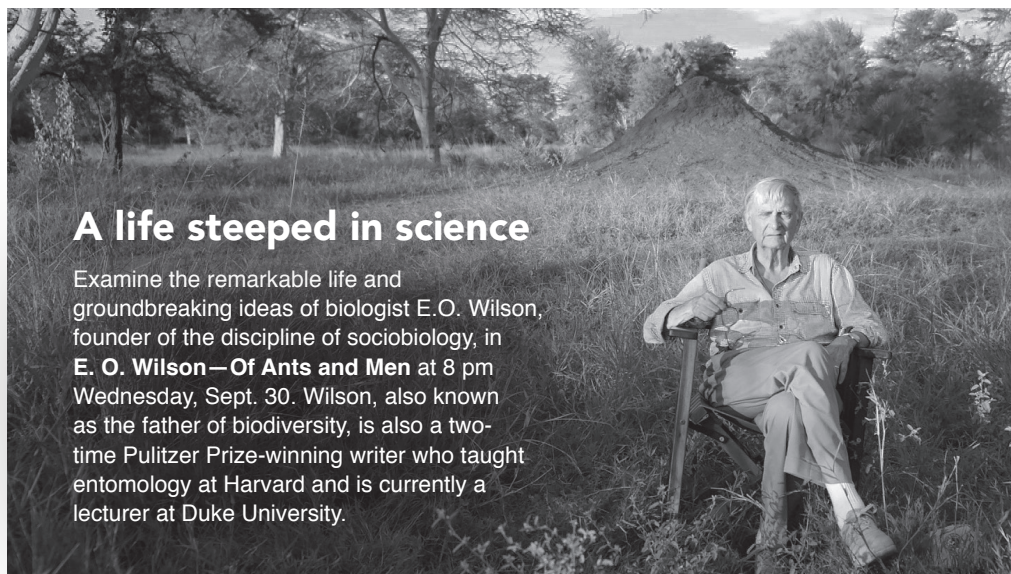
Nature's Miracle Orphans: Wild Lessons. Part 2 of 2. Watch two-toed baby sloth Pelota learn to be independent in Costa Rica, while in Australia, young kangaroo Harry must be taught to socialize with his mates.

8:00 **E.O. Wilson—Of Ants and Men** (TV-PG)
See article below.

10:00 **Last of the Summer Wine**

10:30 **Newsline**

11:00 **Charlie Rose**



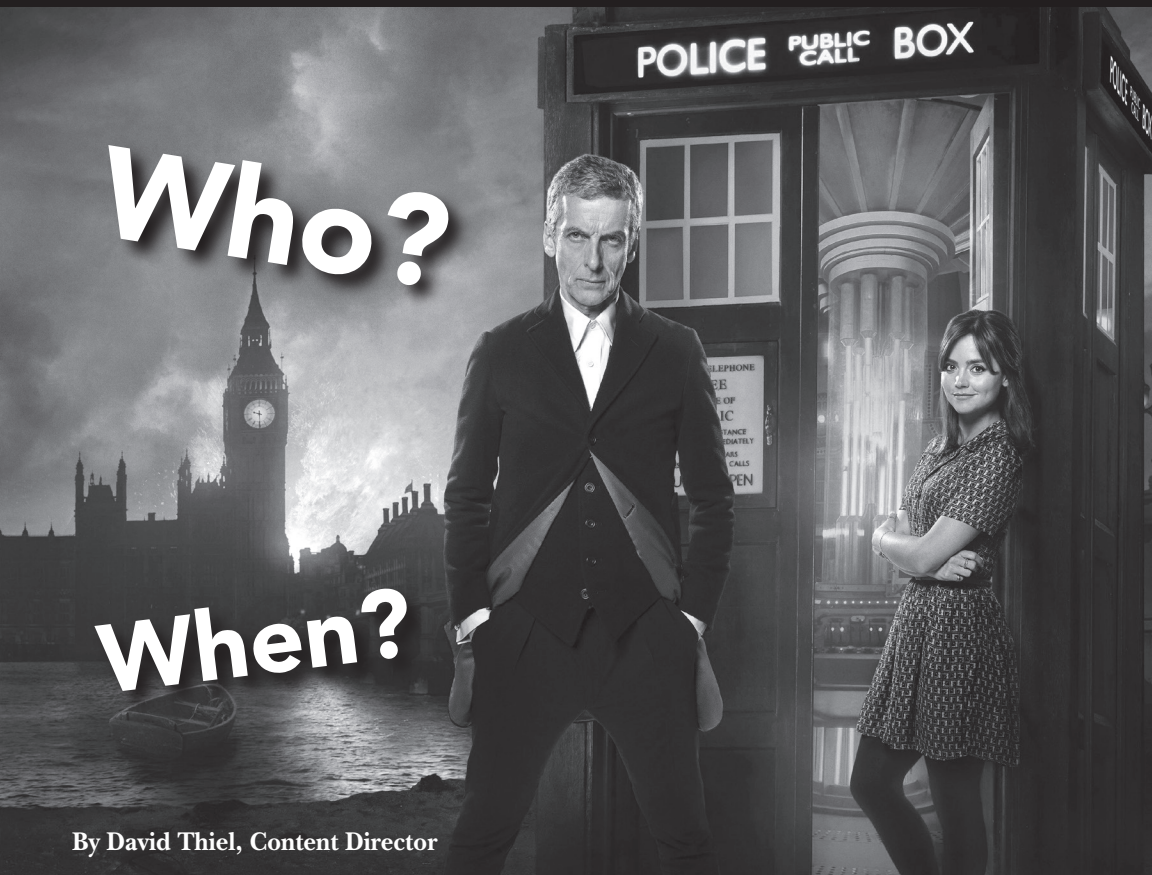
A life steeped in science

Examine the remarkable life and groundbreaking ideas of biologist E.O. Wilson, founder of the discipline of sociobiology, in **E. O. Wilson—Of Ants and Men** at 8 pm Wednesday, Sept. 30. Wilson, also known as the father of biodiversity, is also a two-time Pulitzer Prize-winning writer who taught entomology at Harvard and is currently a lecturer at Duke University.

Since 1988, **Frontline** producer Ken Dornstein has been haunted by the bombing of Pan Am Flight 103 over Lockerbie, Scotland—a terrorist act that killed 270 people, including his older brother. In ***My Brother's Bomber***, Dornstein hunts for clues to the identities and whereabouts of the suspects, whom he tracks for almost five years across the Middle East and Europe. The first of three parts airs at 9 pm Tuesday, Sept. 29.

On the trail to right a wrong





By David Thiel, Content Director

Fans of **Doctor Who** have been asking when they will be able to see new episodes of the science-fiction serial on WILL-TV. The Time Locks have opened at last, and a new Doctor is about to drop in!

At 10 pm Saturday, Sept. 5, we'll see the final stand of the 11th Doctor (Matt Smith) against the assembled armies of his greatest foes on the doomed planet Trenzalore. That episode, *The Time of the Doctor*, runs 65 minutes. Then on Sept. 12, join us

for *Deep Breath*, the 80-minute program introducing the 12th Doctor, portrayed by Peter Capaldi (above).

Accompanied once again by Jenna Coleman as his traveling companion, Clara Oswald, the eternal time traveler will encounter the dreaded Daleks, a deadly mummy and two-dimensional invaders, while a mysterious woman named Missy watches his every move. What is the Nethersphere, and why does it mean tragedy for the Doctor and his friends? Tune in Saturdays for the answers!



PARKLAND THEATRE

Neighborhood 3: Requisition of Doom October 1 - 12

Noises Off! November 12 - 22

The Curate Shakespeare As You Like It February 18 - 28

Fiddler on the Roof April 14 - May 1

2015 - 2016 Theatre Season

www.parkland.edu/theatre

Book Mentor Project has a new leader

Ana Olguin is the new manager of Illinois Public Media's Book Mentor Project, funded by PNC. A former special education teacher in the Miami-Dade County Public Schools, she will be pursuing a PhD in curriculum and instruction at the University of Illinois College of Education.

"Through our Book Mentor Project, Illinois Public Media seeks to meet the literacy needs of as many Head Start and pre-K children and their families as possible," said Kimberlie Kranich, director of community content and engagement. "Not only is Ana a fantastic early childhood educator, project organizer and emerging scholar in curriculum and instruction, she is also bilingual and bicultural and will help us better serve Spanish speakers, one of the largest language groups in our service area. She is a great addition to our team."

Ana is already working closely with our project partners, including Champaign County Head Start, the Champaign Unit 4 Early Childhood Education Center and the Parkland Planetarium.

"The project partners made great book selections, and I'm looking forward to



getting underway with them and our volunteers in the classrooms," Ana said.

"I appreciate that they welcomed my recommendations for two books, one of which relates to family night activities we're planning at the Parkland Planetarium," she added. "One of the ways we hope to make the project even more meaningful is to connect the books to other relevant learning activities."

Ana has already surveyed teachers and volunteers involved with the Book Mentor Project to uncover additional insights. She hopes this information will help guide the three teachers who plan the activities that reinforce learning themes from each of the books.

"We're looking at ways to also include activities that can be done at home and involve parents," she said.



Save the date

A wine tasting with Todd Fusco, manager of Art Mart's wine department, to benefit WILL Radio-TV-Online

Saturday, Nov. 7

Full information coming in October's *Patterns...stay tuned for details on this special afternoon event.*

Her interest in family connections was the focus of Ana's capstone project for her Education Specialist degree from the University of Florida.

"Over the three years of my project I saw results that told me what I was doing to reach families was working," she said. "I taught in a low-performing school where 99% of the students qualified for the free lunch program. It wasn't that parents weren't interested in their children; we just needed to find ways to positively engage with them instead of interacting only when there were problems. I think I can bring a lot of what I learned about those relationships to my work here."

Ana will also be sharing her insight by teaching a class—Families, Communities and Schools—this fall for early education students in the College of Education.

Big thanks!

By Bob Culkeen
Interim Chief Operations Officer



A major project to replace the transmission lines for our FM and TV infrastructure was completed July 20. These vital transmission lines run from the transmitter to the broadcast tower, and to the broadcast antenna.

We designed this project so that work would take place during the overnight hours to minimize broadcast outages; however, on a number of occasions we were required to turn off the transmitters for the safety of the tower workers and to make final connections.

We realize this was an interruption in our service to you, so I thank you for your patience over the last few months as we worked to complete this project.

CHAMPAIGN CYCLE CO.

Now with two locations!



110 South Race Street
URBANA

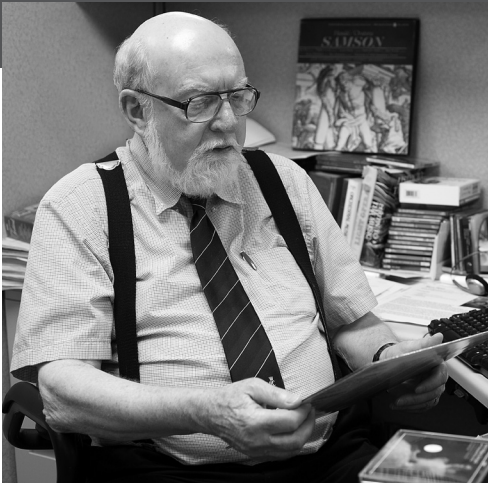


506 South Country Fair Drive
CHAMPAIGN

TREK

Electra

champaigncycle.com



Classics by Request host stepping away

After 30 years of hosting **Classics by Request** (currently 9-11 am Saturday mornings) on WILL-FM, John Frayne will bid the program farewell with the Sept. 26 broadcast. Vincent Trauth, host of WILL-FM's **The Evening Concert**, will also take on duties for **Classics** on Oct. 3.

"Most requests are for 19th and 20th Century pieces," John said. "And among American composers, George Gershwin and Aaron Copeland have reigned supreme in popularity."

John has tracked down music from movies and commercials, or rare recordings, for callers ranging from individuals just discovering classical music to members of symphony orchestras. Occasionally, he has

had to identify a request from a few notes hummed to him over the phone.

Requests are often in honor of a special occasion, such as a wedding anniversary or birthday, or as memorials for friends and family members.

"Music is a powerful memento," John said. "One of my favorite requests was from a man who had heard Rachmaninoff in concert the year before the famed pianist and conductor died. Hearing the music reminded the caller of that once-in-a-lifetime experience while he was a GI in World War II."

While he still enjoys his interactions with listeners, John asked to relinquish his **Classics by Request** host responsibilities in order to devote more time to **Classics of the Phonograph** (11 am Saturdays). He will also continue with **Afternoon at the Opera** at noon Saturdays. In addition, he will remain a concert music critic for *The News-Gazette*, and as an instructor for courses through the Osher Lifelong Learning Institute. John is also lending his expertise to help determine which of the items donated to this year's **Vintage Vinyl** sale should be included in the Collector's Corner.


"I leave **Classics by Request** with some nostalgia, but after 30 years it's time for someone else to take over the reins," he added.



RAILROAD DAYS

Sept. 19 & 20

Ride as many trains as you want with your ALL DAY TICKET
Gates open up at 9 a.m.

MONTICELLO RAILWAY MUSEUM

 I-72 at Exit No.166
(877)762-9011
website: MryM.org

Thank you, Program Underwriters!

Private support accounts for the largest single source of funds necessary to make Illinois Public Media and the WILL stations great resources for communities across central Illinois. We appreciate the following organizations that have stepped forward to join the individuals and families who support award-winning public media services.

AgriGold Hybrids
ALTO Vineyards
Amasong
The Andersons
Arends & Sons
Asabel Gridley Antique Shop
Associated Antique Dealers
Auditory Care Center
Autumn Fields
Bah Humberg Productions
Baroque Artists of Champaign-Urbana (BACH)
Bates Commodities
Beckman Institute
The Beef House
Bevier Café and Spice Box
Big Grove Tavern
Bikeworks
Black Dog Smoke and Ale House
The Blind Man
Body Therapy Shop
Bodywork Associates
The Brown Bag Deli
Busey
C-U Ballet
C-U Craft League
The Center for Advanced Study
Center for East Asian & Pacific Studies
Central Illinois Antique Dealers
Central Illinois Regional Airport
Champaign County Mental Health Board
Champaign Cycle
Champaign-Danville Overhead Doors
Champaign Park District
Champaign Public Library
Champaign-Urbana Mass Transit District
Champaign-Urbana Symphony
Charleston Community Theater
Cheese & Crackers
The Chorale
City of Urbana Market at the Square
Clark-Lindsey Village
Cline Center for Democracy
College Illinois
Columbia Street Roastery
Common Ground Food Co-op
Community Concierge Magazine
Community Foundation of East Central Illinois
Community Shares of Illinois
Country Arbors Nursery
Country Financial/ Scott Jackson
Country Insurance & Financial Services
Courage Connection
CU Ballet
CU Folk and Roots Festival
Danville Gardens
Danville Symphony
Decatur Celebration
Developmental Services Center
DOCHA
Eastern Illinois University
Eastern Rug Gallery
Enterprise Works-Research Park
Exceptional Artists
Farm Credit Illinois
Farmweek-FarmweekNow.com
Farmer City Antique Show
First Advisors Financial Group, LLC
First Bank, Savoy
First Midwest
First State Bank Corp.
Global Commodity Analytics & Consulting LLC
Grainfield Marketing
Great Harvest Bread Company
Harper College
Heel to Toe
Hendrick House
Henrichs Insurance Services
Hickory Point Bank & Trust
Hudson Drug and Hallmark Shop
Illini FS
Illini Nissan
Illini Pella Windows, Inc.
Illini Union Ballroom
Illinois Arts Council
Illinois Farm Bureau
Illinois Grape Growers Association
Illinois Pork Producers Association
Illinois Shakespeare Festival
Illinois State University School of Music
Illinois Symphony Orchestra
Illinois Times
Institute of Natural Resource Sustainability
Iowa State University
Jane Addams Book Shop
Kirby Medical Center
Kirkland Fine Arts Center
Ko-Fusion
Krannert Art Museum
Krannert Center for the Performing Arts
Kyle McGinnis, CPA
Landscape Recycling Center
Learnard Seed
Lincoln Square Village
McKinley Church & Foundation
The Meredith Foundation
The Mervis Family Foundation
Metropolitan Opera
Midwest Plastic Products
Monticello Chamber of Commerce
Monticello Railway Museum
Murray Wise Associates, LLC
Natural Gourmet
New & Vintage Art & Antiques
Outback Concerts
Owens Funeral Home
Parkland College Theatre
Pars Rug Gallery
Patterson Office Supplies
John T. Phipps Law Offices, P.C.
PNC Wealth Management
Pioneer Seeds
Prairie Fire Glass
Praeliand Feeds
Pribble Crop Insurance
Pro-Soil Ag Solutions
Radio Maria
Ratio Architects
Regent Ballroom
Renewal by Andersen
Rental City
Risk Management Commodities
River Valley Metro
St. Joseph Apothecary
Sangamon Auditorium
Sew Sassy
Silvercreek/Courier Cafe
SIU School of Law
Sinfonia da Camera
Smith Manor
Smith Moore
Spiros Law
Spurlock Museum Guild
Standard Grain
State Farm Insurance
Stewart-Peterson
Strategic Farm Marketing
Stratton Leadership & MicroSociety Magnet School
Strawberry Fields
Subaru of Champaign
Sweeney Brothers Rug Gallery
Symphony Orchestra Guild of Decatur
Techline
Ten Thousand Villages
These Four Walls
Thomas, Mamer & Haughey
Total Grain Marketing
Trophy Time
U of I Campus Recreation
U of I College of ACES
U of I College of Applied Health Sciences
U of I Center for Business and Public Policy
U of I College of Education
U of I College of Engineering
U of I College of Law
U of I Department of Electrical & Computer Engineering
U of I Employees Credit Union
U of I German Choir
U of I Graduate College
U of I International Studies
U of I Physics Department
U of I School of Music
Unitarian Universalist Church
University of Illinois
University Laboratory High School
University YMCA
Urbana Business Association
Urbana-Champaign Independent Media Center
WGLT
Mike Weaver Ballroom Dance
Wesley United Methodist Church
Women's Health Practice
Woolard Marketing Consultants, Inc.
World Harvest International & Gourmet Foods
Villas of Holly Brook
The Yoga Institute



SEPTEMBER

- 8** ELLNORA Pre-festival:
Local Heroes Night
- 9, 25** Dance for People with Parkinson's
- 9** ELLNORA Pre-festival: ELLNORA at the Art, *In Search of Blind Joe Death: The Saga of John Fahey and Sharon Isbin: Troubadour*

ELLNORA | The Guitar Festival

- 10** Opening Night Party with Terakraft, Mia Dyson, AJ Ghent Band, John Jorgenson Quintet, and North Mississippi Allstars

- 11** Valerie June / Andy McKee, Squonk's Pneumatica, ELLNORA Keynote: A Conversation with Sharon Isbin, Star Rover, David Hidalgo & Marc Ribot, Béla Fleck and Abigail Washburn, Rhonda Vincent and The Rage, Drive-By Truckers, Earth with Dylan Carlson

- 12** Dan Zanes and Friends Celebrate Lead Belly, Squonk's Pneumatica, Keola Beamer and Jeff Peterson with

- Moanani Beamer, Sharon Isbin with Colin Davin, Min Xiao-Fen: *Mao, Monk, and Me!* Simon Shaheen, Sashank Navaladi, Juan Pérez Rodriguez, and Tareq Ramtisi, Punch Brothers, Bucky and John Pizzarelli, Madisen Ward and The Mama Bear, Jessica Lea Mayfield, Los Lobos, Rodrigo y Gabriela, Steve Reich's *Electric Counterpoint* with Dither and Friends with Guest Sets by Colin Davin and Mark Stewart, John Scofield and Jon Cleary

- 15** Sinfonia da Camera: *Rush Hour* — *New Worlds*

- 16** Evalyn Parry's SPIN

- 17, 24** Krannert Uncorked

- 17-19** Julie and Nathan Gunn

- 25** The Pygmalion Festival

- 26** *Steel/Hammer*: Julia Wolfe | SITI Company | Bang on a Can All-Stars

- 27** Jupiter String Quartet with Denise Djokic, cello



MOVING?

Let your public broadcasting membership move with you. Fill out the form below and send it with your address label to:
Friends of WILL, 300 North Goodwin Avenue, Urbana, IL 61801-2316

Let us know six weeks in advance of moving so that we can make the proper change.

- Check here if you wish to remove your name from our membership list.
- Please update my membership with this new address:

Name _____ State _____ Zip _____
 Street _____
 City _____
 Phone day () _____ evening () _____

Friends of WILL
Campbell Hall for Public Telecommunication
300 North Goodwin Avenue
Urbana, IL 61801-2316

NONPROFIT ORGANIZATION
 U.S. POSTAGE PAID
 CHAMPAIGN, IL
 PERMIT NO. 453