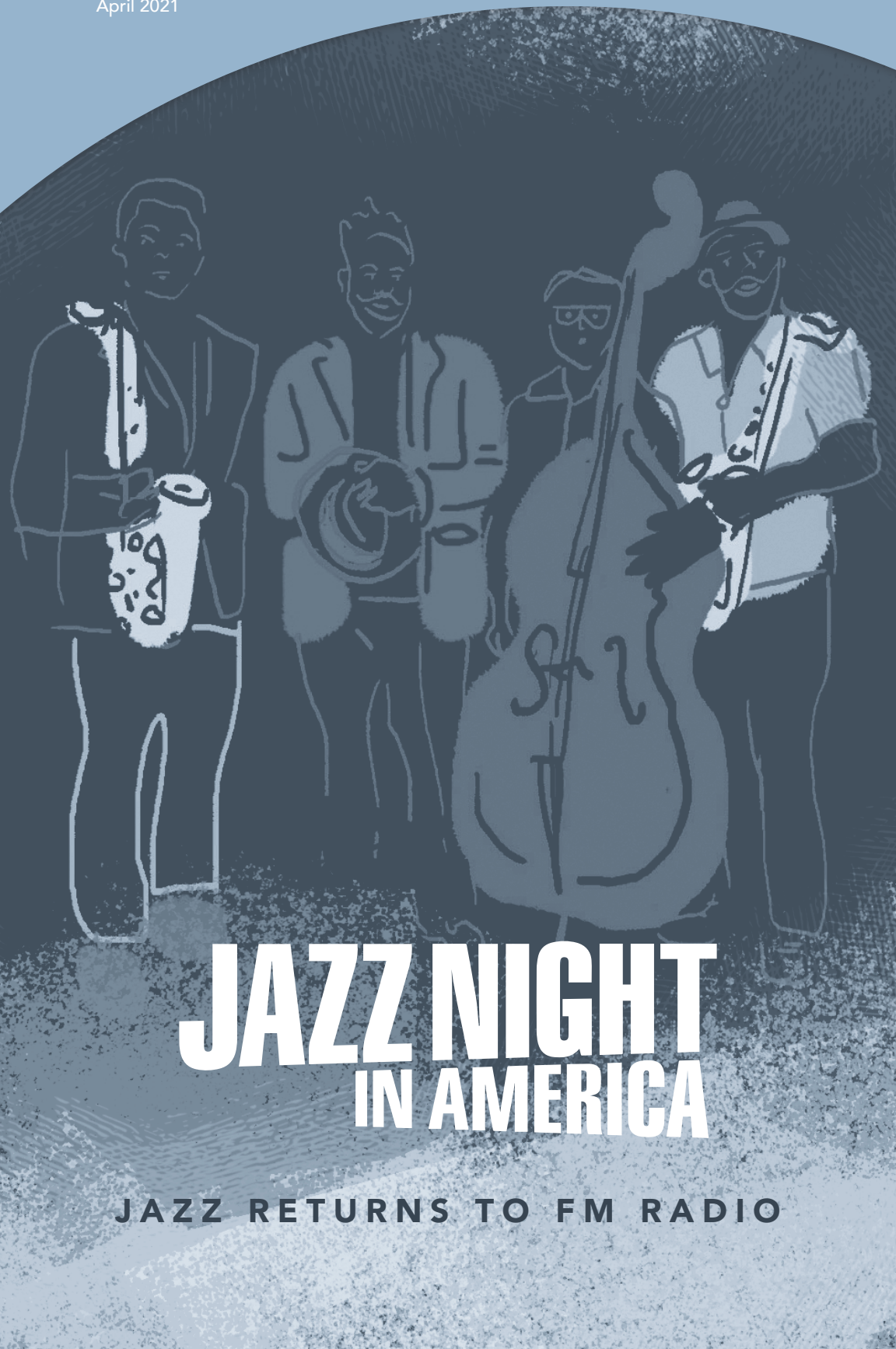


# Patterns

April 2021

Friends of WILL Membership Magazine



## JAZZ NIGHT IN AMERICA

JAZZ RETURNS TO FM RADIO

Membership Hotline: 800-898-1065  
WILL AM-FM-TV: 217-333-7300  
Campbell Hall  
300 N. Goodwin Ave., Urbana, IL 61801-2316

### Mailing List Exchange

Donor records are proprietary and confidential.  
WILL does not sell, rent or trade its donor lists.

### Patterns

*Friends of WILL Membership Magazine*  
Editor/Art Designer: Sarah Whittington  
Art Director: Kurt Bielema

Printed by Premier Print Group.



Printed with SOY INK  
on RECYCLED,  
RECYCLABLE paper.

## RADIO

**90.9 FM:** A mix of classical music and NPR information programs, including local news. (Also with live streaming on [will.illinois.edu](http://will.illinois.edu).)  
*See pages 4-5.*

**101.1 FM and 90.9 FM HD2:** Locally produced music programs and classical music from C24. (101.1 is available in the Champaign-Urbana area.) *See page 6.*

**580 AM:** News and information, NPR, BBC, news, agriculture, talk shows. (Also heard on 90.9 FM HD3 with live streaming on [will.illinois.edu](http://will.illinois.edu).) *See page 7.*

## TELEVISION

### WILL-HD

All your favorite PBS and local programming, in high definition when available. 12.1; Contact your cable or satellite provider for channel information. *See pages 9-16.*

### WILL Kids 24/7

Around the clock, award-winning children's programming. 12.2; also available on Comcast and Mediacom.

### WILL Create

Cooking, travel, gardening and home improvement, arts and crafts. 12.3; also available on Comcast and Mediacom. *See page 8.*

### WILL World

PBS documentaries, news and public affairs. 12.3; also available on Comcast and Mediacom. *See page 8.*

## ONLINE

[will.illinois.edu](http://will.illinois.edu)



[facebook.com/WILLradiotvonline](https://facebook.com/WILLradiotvonline)



[@willpublicmedia](https://twitter.com/willpublicmedia)



[@willpublicmedia](https://www.instagram.com/willpublicmedia)

### Get Aircheck

Video previews, behind-the-scenes information, program schedule updates and more, delivered every weekend to your email inbox.

[will.illinois.edu/aircheck](http://will.illinois.edu/aircheck)

# Patterns

April 2021 Volume XLVIII, Number 10



*In the interest of financial responsibility, we have condensed 2020's annual report distribution. Therefore, pages 18-19 are a summarized version, including how to access the full document online.*

As a supporter, you value Illinois Public Media as the voice of your community, your state, your nation, and your world. 2020 underscored that role and introduced a significant new audience to a diverse range of resources that embody trust, integrity, fairness, and inclusion.

Together, you experienced the power of public media—content built around serving our local communities, amplified through sharing with our national NPR and PBS media partners to document and report on our shared experiences.

During a time when many news organizations are in decline or are cutting back resources and coverage, Illinois Public Media is fulfilling its mission in more robust ways than ever before—contributing to the arts, news, education, entertainment, and local information on every content platform.

It's a role we have served proudly for 99 years, and one that we work to honor each day. As we anticipate the privilege of celebrating our century milestone on April 6, 2022, I look forward to continuing to earn the trust and support you have placed in all of us at Illinois Public Media.

Moss Bresnahan, President and CEO  
Twitter: @MossILMedia

## Celebrate Jazz Appreciation Month with Illinois Public Media

# JAZZ NIGHT IN AMERICA

**Jazz Night in America** joins the WILL-FM 90.9 schedule just in time for Jazz Appreciation Month. Hosted by Christian McBride, the show presents content from across the nation on multiple platforms, featuring concert performances as well as storytelling around amazing concert performances including the artists, the venues, the fans, and the larger dynamics at play. **Jazz Night in America** is a rich presentation of the uniquely American art form that strives to reinvigorate public media jazz programming for audiences today. The show will air at 10 pm Saturdays and repeat at 9 pm Sundays, starting April 3.



## AMERICAN MASTERS



### His passion to play

After more than 30 years as the colorful bandleader of *The Tonight Show Starring Johnny Carson*, master trumpeter Doc Severinsen continues to defy nature well into his 90s with a grueling schedule of touring, performing and teaching. An engaging new documentary, *Never Too Late: The Doc Severinsen Story*, traces the life and groundbreaking career of the unstoppable musical icon, revealing his personal trials and underscoring a remarkable journey of inspiration and obsession. The film from **American Masters** premieres at 8 pm Friday, April 2.

It features original interviews with friends, colleagues and famous fans inspired by the music icon, including *Tonight Show Starring Jimmy Fallon* bandleader Questlove, master trumpeters Chris Botti and Arturo Sandoval and comedians Bob Saget and Martin Mull, as well as intimate conversations with the irreverent, irrepressible Severinsen and his family members. Archival and vibrant new concert footage along with hilarious clips from *The Tonight Show* showcase Severinsen's unparalleled musical virtuosity and comedic flair.



## Throughline and Hidden Brain join AM radio schedule

The past is never past. Every headline has a history. The past is never past. Every headline has a history. **Throughline** takes you back in time to get at the core of what keeps our historical gears turning. Join Ramtin Arablouei and Rund Abdelfatah every week as they go back in time to understand the present. These are stories you can feel and sounds you can see from the moments that shaped our world. **Throughline** airs at 7 pm Sundays on WILL-AM 580, starting April 4.



The **Hidden Brain** helps curious people understand the world—and themselves. Using science and storytelling, **Hidden Brain's** host Shankar Vedantam reveals the unconscious patterns that drive human behavior, the biases that shape our choices, and the triggers that direct the course of our relationships. The series airs at 5 pm Saturdays on WILL-AM 580, starting April 3.



## 99th birthday spring fund drive

On Tuesday, April 6, 1922, WILL (then known as WRM) first went on the air from the University of Illinois' Electrical Engineering Laboratory. In the 99 years since, we have been dedicated to serving central Illinois, expanding our services based on community need. While we are incredibly excited to celebrate our 100th birthday next year, we still think 99 is a pretty exciting milestone. We've made it this far thanks to all of the Friends of WILL, and want to take the opportunity to spread the message that this service only works with community support. We hope you'll help us celebrate with a gift of support during our 99th birthday spring fund drive.



Of all the years we've been around, the last one has certainly been historic, and we are incredibly grateful for your continued support. Whether you listen to **Classic Mornings** in Springfield, you download **The Closing Market Report** in Decatur, you watch **MASTERPIECE** in Bloomington, you stream **The 21st** in Danville, your children do remote learning with PBS Kids in Urbana, or you watch **Mid-American Gardener** in Tuscola, we are dedicated to continuing to be your essential public media station. Make a gift of support today at [willgive.org](http://willgive.org)





*A Writer (1899-1929)*  
7 pm Monday, April 5

Hemingway, yearning for adventure, volunteers for the Red Cross during World War I. He marries Hadley Richardson and moves to Paris, publishes *The Sun Also Rises* and finds critical and commercial success with his second novel, *A Farewell to Arms*.



*The Avatar (1929-1944)*  
7 pm Tuesday, April 6

Hemingway, having achieved a level of fame rarely seen in the literary world, settles in Key West with Pauline Pfeiffer but can't stay put for long. He reports on the Spanish Civil War and begins a tempestuous romance with Martha Gellhorn, another journalist.



*The Blank Page (1944-1961)*  
7 pm Wednesday, April 7

Hemingway follows the Army as they advance through Europe. Afterwards, he tries to start a life with Mary Welsh, but is beset with tragedies. He publishes *The Old Man and the Sea* to acclaim but is overcome by his declining mental condition.



**Hemingway**, a three-part, six-hour documentary film by Ken Burns and Lynn Novick, examines the visionary work and the turbulent life of Ernest Hemingway, one of the greatest and most influential writers America has ever produced. Interweaving his eventful biography—a life lived at the ultimately treacherous nexus of art, fame, and celebrity—with carefully selected excerpts from his iconic short stories, novels, and non-fiction, the series reveals the brilliant, ambitious, charismatic, and complicated man behind the myth, and the art he created.

# HEMINGWAY

A FILM BY KEN BURNS AND LYNN NOVICK



## WEEKDAYS

6 am

### NPR Morning Edition

with Steve Inskeep, Rachel Martin, and Noel King

9 am

### Classic Mornings with Vic Di Geronimo

Join Vic for music and companionship and make each morning a classic morning!

Noon

### Afternoon Classics

NPR News Headlines at 12:01, 1:01, and 3:01.

5 pm

### NPR All Things Considered

with Ailsa Chang, Audie Cornish, Mary Louise Kelly, and Ari Shapiro

## 6 pm Monday-Thursday

### The 21st

with Brian Mackey

7 pm

### The Evening Concert

Great performances from the great concert venues. Also on Sundays from 7-9. Listings are subject to change.

## Monday:

### The New York Philharmonic This Week

- 4/5 **Gilbert and Romanovsky**  
Alexander Romanovsky, piano  
Rachmaninoff: Rhapsody on a Theme of Paganini for Piano and Orchestra
- 4/12 **Gilbert and Blythe**  
Stephanie Blythe, mezzo-soprano  
Corigliano: One Sweet Morning, for Mezzo-Soprano and Orchestra  
Dvorak: Symphony No. 7
- 4/19 **Gilbert and Zimmerman**  
Frank Zimmerman, violin  
Alan Gilbert, violin  
Bach, J.S.: Concerto for Two Violins  
Brahms: Symphony No. 3
- 4/26 **Maazel Conducts Mozart and Debussy**  
Robert Langevin, flute  
Nancy Allen, harp  
Mozart: Symphony No. 38, "Prague"  
Mozart: Concerto for Flute and Harp  
Debussy: Iberia

## Tuesday:

### Chicago Symphony Orchestra

- 4/6 **Chen Leads Mozart**  
Mozart: Eine kleine Nachtmusik, K. 525  
Mozart: Flute Concerto No. 2 in D Major, K. 314  
Stefán Ragnar Höskuldsson, flute  
Mozart: Symphony No. 25 in G Minor, K. 183
- 4/13 **Boulez Conducts Mahler 7**  
Mahler: Symphony No. 7  
Mozart: Divertimento in F Major, K. 138
- 4/20 **Muti and De Maistre**  
Chabrier: España  
Ginastera: Harp Concerto  
Xavier De Maistre, harp  
Ravel: Boléro

## 4/27 Eschenbach and Fray

Weber: Overture to Die Freischütz  
Chopin: Piano Concerto No. 2 in F Minor, Op. 21  
David Fray, piano  
Mendelssohn: Overture to A Midsummer Night's Dream, Op. 21  
Mendelssohn: Symphony No. 4 in A Major

## Wednesday:

### Deutsche Welle Festival Concerts

(new series)

- 4/7 **Berlin Philharmonic's Europe Concert**  
Kirill Petrenko, conductor  
Pärt: Fratres  
Barber: Adagio for Strings  
Mahler: Symphony No. 4 in G Major
- 4/14 **St. John's Passion from Leipzig**  
Bach: St. John Passion, BWV 245  
adapted for tenor, harpsichord, organ, and percussion by Philipp Lamprecht, Elina Albach, and Benedikt Kristjansson
- 4/21 **Cristian Macelaru and Igor Levit**  
West German Radio Symphony Orchestra  
Wagner: Siegfried Idyll  
Mozart: Piano Concerto No. 12 in A Major  
Schubert: Symphony No. 5 in B-flat Major
- 4/28 **Pastoral Plus**  
West German Radio Symphony Orchestra  
Cristian Macelaru, conductor  
Bernstein: Serenade after Plato's Symposium  
Members of the Beethoven Orchestra Bonn  
Beethoven: Symphony No. 6 in F Major, Op. 68

## Thursday:

### Pittsburgh Symphony Orchestra

- 4/1 **Honeck and Rusinek**  
Rossini: Introduction, Theme and Variations for Clarinet and Orchestra  
Weber: Clarinet Concerto No. 1  
Strauss, Jr: Waltzes and Polkas
- 4/8 **Nosedá and Kozhuhkin**  
Rachmaninoff: Piano Concerto No. 3  
Rossini: Overture to William Tell  
Beethoven: Symphony No. 2
- 4/15 **Honeck and Vogt**  
Bruckner: Symphony No. 9  
Schumann: Piano Concerto
- 4/22 **Honeck and Midori**  
Mozart: Symphony No. 35, "Haffner"  
Mendelssohn: Violin Concerto  
Brahms: Symphony No. 1
- 4/29 **Urbanski and Chen**  
Beethoven: Overture to Egmont  
Bruch: Violin Concerto No. 1  
Shostakovich: Symphony No. 5

## Friday:

### Prairie Performances

with Roger Cooper  
Concerts are subject to availability.

- 4/2 **Sinfonia da Camera**  
Fred Stoltzfus, guest conductor  
"Saint Matthew Passion"  
Central Illinois Children's Chorus  
University of Illinois Chorale  
UI Oratorio Society  
Tarik Bousselma, guest artist
- 4/9 **Champaign-Urbana Symphony Orchestra**  
Stephen Alltop, conductor  
University of Illinois Oratorio Society  
Andrew McGill, conductor  
"Resurrection" (10/08/2016)  
Mahler: Symphony No. 2, "Resurrection"  
Sarah Gartshore, soprano  
Julie Miller, mezzo-soprano



- 4/16 **Sinfonia da Camera**  
Ian Hobson, conductor  
"Unfinished Business" (10/21/2017)  
Potter: Overture to The Tempest  
Prior: Concerto for Flute and Orchestra  
Jonathan Keeble, flute  
Saint-Saëns: Piano Concerto No. 2 in G Minor, Op. 22  
Ian Hobson, piano  
Schubert: Symphony No. 8 in B Minor, D. 759, "Unfinished"
- 4/23 **Illinois Symphony Orchestra**  
Andrew Sewell, conductor  
"Fantastic Finale" (05/05/2016)  
Dvorak: Carnival Overture  
Rodrigo: "Concierto de Aranjuez"  
Jason Vieux, guitar  
Berlioz: "Symphonie Fantastique"
- 4/30 **Illinois Symphony Chamber Orchestra**  
Aram Demirjian, conductor  
"April in Paris" (03/31/2017)  
Chabrier: Habanera  
Faure: Pavane, Op 50  
Ravel: Le Tombeau de Couperin, Suite for Orchestra  
Debussy: Clair de lune from Suite Bergamasque  
Mozart: Symphony No. 31 in D, "Paris"

**9 pm****Night Music**

Andrea Blain, Scott Blankenship, and Steve Seel keep you company through the night and into the morning. **NPR News Headlines** at 9:01.

**SATURDAYS****7 am****NPR Weekend Edition**

with Scott Simon

**9 am****Classics By Request**

Submit requests to Vincent Trauth at [classreq@illinois.edu](mailto:classreq@illinois.edu) or leave a message at **217-265-5064**.

**11 am****Classics of the Phonograph**

John Frayne's weekly exploration of memorable recordings from the 20th century.

- 4/3 Glenn Gould Plays Richard Strauss  
4/10 Bach Conductor Karl Richter  
4/17 Famous Woodwind Players  
4/24 The Nonesuch Record Label

**Noon****Afternoon at the Opera**

The Metropolitan Opera Season of Encore Broadcasts.

- 4/3 **Rusalka** (Dvořák). Yannick Nézet-Séguin, cond., with Renée Fleming (Rusalka), Emily Magee (Foreign Princess), Dolora Zajick (Ježibaba), Piotr Beczala (Prince), John Relyea (Water Gnome), and the Met Ensemble. (Performance from February 8, 2014)
- 4/10 **La Bohème** (Puccini). Alexander Soddy, cond., with Angel Blue (Mimi), Brigitte Kele (Musetta), Dmytro Popov (Rodolfo), Lucas Meachem (Marcello), and the Met Ensemble. (Performance from October 2, 2017)
- 4/17 **From the House of the Dead** (Janáček). Esa-Pekka Salonen, cond., with Stefan Margita (Filka Morozov/Kuzmich), Eric Stoklossa (Alyeya), Peter Mattei (Shishkov), Willard White (Gorjanchikov) and the Met Ensemble. (Performance from December 2, 2009)

- 4/24 **Die Frau Ohne Schatten (The Woman Without a Shadow)** (R. Strauss). Vladimir Jurowski, cond., with Anne Schwanewilms (Empress), Christine Goerke (Dyer's Wife), Ildikó Komlósi (Nurse), Torsten Kerl (Emperor), Johan Reuter (Barak), and the Met Ensemble. (Performance from November 26, 2013)

**4 pm****NPR All Things Considered**

with Michel Martin

**5 pm****Performance Today Weekend**

Host Fred Child presents a two-hour weekly program that features classical music in concert from American Public Media studios and sites across the nation and around the world, as well as classical music news, interviews and features. **[Also Sundays at 2]**

**7 pm****The Midnight Special**

Marilyn Rea Beyer offers listeners a lively potpourri of folk, Celtic and bluegrass, show and novelty tunes, and hilarious comedy routines.

**9 pm****American Parlor Songbook**

JP Houston and Julie Van Dusen feature clever songs, charming stories, and hilarious sketches every week.

**NPR News Headlines** at 9:01.

**10 pm****Jazz Night In America**

with Christian McBride

**11 pm****Classics All Night****SUNDAYS****7 am****NPR Weekend Edition**

with Lulu Garcia-Navarro

**9 am****Sunday Baroque**

Hosted by Suzanne Bona. **NPR News Headlines** at 9:01 and 10:01.

**1 pm****The Record Shelf****2 pm****Performance Today Weekend****4 pm****NPR All Things Considered**

with Michel Martin

**5 pm****Classical Music**



# willfm

## 101.1

### WEEKDAYS

6–9 am

**Classical Music**

9 am–noon

**Classic Mornings  
with Vic Di Geronimo**

Join Vic for music and companionship and make each morning a classic morning!

Noon–overnight

**Classical Music**

Friday 7-9 pm

**Prairie Performances**

Roger Cooper presents regional concerts from the WILL listening area.

### SATURDAYS

7–9 am

**Classical Music**

9–11 am

**Classics by Request**

Vincent Trauth plays requests at this time each Saturday. Submit requests at [classreq@illinois.edu](mailto:classreq@illinois.edu) or leave a message at 217-265-5064.

11 am–noon

**Classics of the Phonograph**

John Frayne's weekly exploration of memorable recordings from the 20th century. See page 5 for listings.

Noon–overnight

**Classical Music**

### SUNDAYS

All day

**Classical Music**



ILLINOIS  
**ARTS**  
COUNCIL  
AGENCY

Programs on WILL Radio are partially sponsored by a grant from the Illinois Arts Council, a state agency.

---

7-8 pm

**The Evening Concert**

**Sunday:**

**The Chamber Music Society of Lincoln Center**

- 4/4 Brahms/Dvorák  
Brahms: Zwei Gesänge for Voice, Viola, and Piano, Op. 91  
Dvorák: Trio in F minor for Piano, Violin, and Cello, Op. 65
- 4/11 Thoughtful and Grand  
Adolphe: Couple for Cello and Piano  
Spohr: Grand Nonetto in F major for Flute, Oboe, Clarinet, Bassoon, Horn, Violin, Viola, Cello, and Bass, Op. 31
- 4/18 Baroque Collection  
Telemann: Gulliver Suite in D Major  
Corelli: Concerto Grosso in G Minor for Two Violins, Cello, Strings, and Continuo, Op. 6, No. 8, "Christmas Concerto"
- 4/25 America's Musical Roots  
Burleigh: Southland Sketches for Violin and Piano  
Dvorák: Quintet in G major for Two Violins, Viola, Cello, and Bass, Op. 77

---

8-9 pm

**The Evening Concert**

**Early Music Now with Sara Schneider**

- 4/4 April Fools' Day  
This week's Early Music Now proves that there's some pretty strange early music out there. We'll revel in the weird, wild, and wacky with composers like Heinrich Biber, Solage, Carlo Gesualdo, and Henry Purcell.
- 4/11 Joyful Eastertide!  
This week's show presents an eclectic array of music to celebrate Easter, including motets by François Couperin, Jacob Obrecht, Antoine Busnois, and Orlando Gibbons.
- 4/18 Treasures from Dendermonde Codex  
We'll hear Psallentes, a Belgian ensemble specializing in chant, performing selections by Hildegard of Bingen and others from this codex.
- 4/25 Recent Releases  
"The Mad Lover" features sonatas, suites, grounds, and various bizzarie from 17th century England performed by Théotime Langlois de Swarte (violin) and Thomas Dunford (lute).

---

9 pm

**Jazz Night In America**

with Christian McBride

---

10 pm

**Harmonia**

Angela Mariani presents Baroque and early music.

**NPR News Headlines** at 10:01.

---

11 pm

**The Romantic Hours**

Music, poetry and romance with Mona Golabek.

---

midnight

**Classical Music**



▲ Stephanie Blythe, mezzo-soprano, performs with the New York Philharmonic at 7 pm Monday, April 12.

Monday - Friday		Saturday		Sunday
NPR Morning Edition with Brian Moline		5:00	BBC Overnight Continued	BBC World Service
		6:00	Commodity Week	Inside Europe
		6:30	State Week in Review	
		7:00	NPR Weekend Edition	NPR Weekend Edition
1A		9:00	The Splendid Table	
		10:00	Wait Wait ... Don't Tell Me	It's Been A Minute with Sam Sanders
The 21st	Statewide (F)	11:00	Ask Me Another	Says You
Here & Now with Jason Croft		Noon	This American Life	Wait, Wait ... Don't Tell Me
		1:00	The Moth Radio Hour	The Treatment
		1:30		State Week in Review
The Closing Market Report		2:00	Radiolab	Reveal
BBC Newshour	Commodity Week (F)	2:30		
Fresh Air		3:00	TED Radio Hour	On the Media
All Things Considered with Steve Morck		4:00	All Things Considered	All Things Considered
		5:00	Hidden Brain	People's Pharmacy
		6:00	Big Picture Science	Travel with Rick Steves
The 21st (repeat)	Statewide (F) (repeat)	7:00	Living on Earth	Throughline
Fresh Air (repeat)	Science Friday (F)	8:00	Latino USA	Special Programming
BBC World Service	Fresh Air (F) (repeat)	9:00	Alternative Radio	To the Best of Our Knowledge
		10:00	Science Friday (repeat)	
		11:00	Left, Right, and Center	Le Show
		12:00- 5 am	BBC World Service	BBC World Service

**Bold Listing** = National/International News



AGRICULTURE

Todd Gleason, host, Closing Market Report & Commodity Week

**Opening Market Report:** 8:55 am; **Market Update:** 10:58 am; **Midday Market Report:** 12:58 pm; **Closing Market Report:** 2:06 pm. **Fridays: Commodity Week:** 2:30 pm; **Grain Market Summary:** 4:32 pm. To listen to archived Ag reports, sign up for the Illinois Public Media Ag E-newsletter, or download our agricultural podcasts, visit [www.willag.org](http://www.willag.org).



ILLINOIS PUBLIC MEDIA NEWS

Reginald Hardwick, news and public affairs director, Illinois Public Media

The news from Illinois Public Media's award-winning staff of reporters, hosts, and producers—Anna Casey, Jason Croft, Dana Cronin, Lee Gaines, Christine Herman, Brian Mackey, Jim Meadows, Brian Moline, Steve Morck, Chantal Vaca, and Ryan Wilde—can be heard during **Morning Edition**, **The 21st**, **Here & Now**, and **All Things Considered**.



WEATHER

Monday-Friday

Weather forecasts from meteorologist Andrew Pritchard throughout the day.

**5-6 am****Mon:** Craft In America**Tue:** J. Schwanke's Life in Bloom; Modern Pioneering**Wed:** Make it Artsy; Urban Conversion**Thu:** Why Quilts Matter; Beads, Baubles, and Jewelry**Fri:** Make Your Mark; Growing Bolder**Sat:** Classical Stretch; Yoga In Practice**Sun:** Classical Stretch; Classical Stretch**6-7 am****Mon and Fri:** Best of Sewing with Nancy;

Paint This with Jerry Yarnell

**Tue:** Quilting Arts; Painting And Travel with Roger**Wed:** Knit and Crochet Now; Painting with Wilson Bickford**Thur:** Quilting Arts; Painting with Paulson**Sat:** Fons & Porter's Love of Quilting; Best of Simply Paint**Sun:** It's Sew Easy; Wyland's Art Studio**7-8 am****Mon, Fri:** This Old House; Ask This Old House**Tue, Thurs:** Craftsman's Legacy; Woodsmith Shop**Wed:** American Woodshop; Garage with Steve Butler**Sat:** Ask This Old House; This Old House**Sun:** Classical Stretch**8-9 am****Mon:** Dining with The Chef; Iowa Ingredient**Tue and Thu:** Mike Colameco's Real Food; New Scandinavian Cooking**Wed and Fri:** Hubert Keller: Secrets of a Chef; America's Test Kitchen**Sat:** P. Allen Smith's Garden Home; Growing a Greener World**Sun:** Food Over 50; The Jazzy Vegetarian**9-10 am****Mon:** Let's Go, Minnesota!; Beyond Your Backyard**Tue:** Weekends With Yankee; Travelscope**Wed:** Bare Feet with Mickela Mallozzi; Curious Traveler**Thu:** Weekends With Yankee; Travelscope**Fri:** Cycle Around Japan; Travels with Darley**Sun:** Trails to Oishii Tokyo; Journeys in Japan**10-11 am****Mon-Fri:** Rick Steves' Europe; Best of the Joy of Painting**Sun:** P. Allen Smith's Garden Home; Garden Smart**WEEKEND MARATHONS**

9am-2pm Saturday; 11am-4pm Sunday

**Apr. 3/4:** Spring Fling**Apr. 10/11:** Jacques' Heart and Soul**Apr. 17/18:** Earth Day**Apr. 24/25:** America's Test Kitchen

## will WORLD

**Monday-Friday****9:00** PBS NewsHour**10:00** The Day**10:30** BBC World News**Mondays****7:00** AfroPop: The Ultimate Cultural Exchange**8:00** Reel South**8:30** Stories from the Stage**11:00** Connected: A Search for Unity**Tuesdays****7:00** America Reframed**8:00** Independent Lens: Out of State (4/6); Rebels with a Cause (4/20); Reel South (4/27)**8:30** POV Shorts: In The Absence (4/13)**11:00** America Reframed**Wednesdays****7:30** That Way Madness Lies... (4/21)**8:00** Frontline (4/14, 4/28)**11:00** Butterfly Town, USA (4/7); First Degree (4/14); Independent Lens: Bedlam (4/21); Frontline (4/28)**11:30** I Danced for the Angel of Death—The Dr. Edith Eva Eger Story (4/7); Independent Lens: Down A Dark Stairwell (4/14)**Thursdays****7:00** Climate Change - The Facts (4/1); H2O: The Molecule That Made Us (4/8); The West Is Burning (4/22); Human (4/29)**8:00** Extinction: The Facts (4/1); H2O: The Molecule That Made Us (4/8); Death Is But A Dream (4/15); To Be Announced (4/22); Greta Thunberg: A Year to Save The Planet (4/29)**11:00** NOVA (4/1, 4/15, 4/22, 4/29); H2O: The Molecule That Made Us (4/8)**Fridays****7:00** Hemingway (4/9, 4/16, 4/23)**7:30** Independent Lens: Acorn and the Firestorm (4/2)**11:00** Independent Lens: What Lies Upstream (4/2); Independent Lens: Look & See: Wendell Berry's Kentucky (4/9); W.S. Merwin: to Plant A Tree (4/16); American Experience: Man Who Tried to Feed The World (4/23)**Saturdays****7:00** American Experience: The Blinding of Isaac Woodard (4/3); Independent Lens: Out of State (4/10); Reel South Mossville: When Great Trees Fall (4/24)**7:30** POV Shorts: In The Absence (4/17)**8:00** American Masters: Toni Morrison: The Pieces I Am (4/10); Independent Lens: Coded Bias (4/17); To Be Announced (4/24)**9:00** America Reframed (4/3)**9:30** Reel South (4/17)**10:00** Independent Lens: Decade of Fire (4/10); Variety Studio: Actors On Actors (4/17, 4/24)**10:30** Return: Native American Women Reclaim Foodways For Health & Spirit (4/3); Variety Studio: Actors On Actors (4/17, 4/24)**11:00** American Experience: The Blinding of Isaac Woodard (4/3); Independent Lens: Out of State (4/10); Independent Lens: Coded Bias (4/17); To Be Announced (4/24)**Sundays****7:00** Nature (4/4, 4/18, 4/25); When My Time Comes (4/11)**8:00** To Be Announced**9:00** To Be Announced**10:00** Finding Your Roots**11:00** Nature (4/4, 4/18, 4/25); When My Time Comes (4/11)



Monday - Friday		Saturday	Sunday
Newsline	5:00	Mister Rogers' Neighborhood	Mister Rogers' Neighborhood
Body Electric (M,W,F) Sit and Be Fit (T, Th)	5:30	Arthur	Arthur
Molly of Denali	6:00	Molly of Denali	Molly of Denali
Wild Kratts	6:30	Wild Kratts	Wild Kratts
Hero Elementary	7:00	Hero Elementary	Hero Elementary
Xavier Riddle and the Secret Museum	7:30	Xavier Riddle and the Secret Museum	Xavier Riddle and the Secret Museum
Curious George	8:00	Curious George	Curious George
Daniel Tiger's Neighborhood	8:30	Daniel Tiger's Neighborhood	Daniel Tiger's Neighborhood
Daniel Tiger's Neighborhood	9:00	Daniel Tiger's Neighborhood	Daniel Tiger's Neighborhood
Elinor Wonders Why	9:30	Elinor Wonders Why	Elinor Wonders Why
Sesame Street	10:00	Motorweek	Consuelo Mack WealthTrack
Pinkalicious & Peterrific	10:30	America's Heartland	To the Contrary with Bonnie Erbe
Let's Learn	11:00	Mid-American Gardener	Firing Line with Margaret Hoover
	11:30	J. Schwanke's Life in Bloom	Market to Market
Sesame Street	Noon	America's Test Kitchen	Baseball
Hero Elementary	1:00	Christopher Kimball's Milk Street Television	
Nature Cat	2:00	Kitchen Queens: New Orleans	
Wild Kratts	2:30	Dining with the Chef	Great Performances at the Met: Jonas Kaufman in Concert (4/4) In Concert at the Hollywood Bowl (4/11) Swingin' Sesame Street Celebration (4/18) The Jazz Ambassadors (4/25)
Molly of Denali	3:00	Today's Wild West	Poldark on MASTERPIECE
Xavier Riddle and the Secret Museum	3:30	Make 48	
Odd Squad	4:00		
Arthur	4:30	Ask This Old House	Poldark on MASTERPIECE (4/4, 4/11, 4/25) When My Time Comes (4/18)
DW News	5:00	PBS NewsHour Weekend	PBS NewsHour Weekend
BBC World News	5:30	Rick Steves' Europe	The Whitney Reynolds Show
PBS NewsHour	6:00	Antiques Roadshow	Before We Die

**WILL Kids 24/7 on 12.2**

For the full WILL Kids 24/7 schedule, go to [www.illinois.edu/tv/schedule](http://www.illinois.edu/tv/schedule)



**See the full Create & World schedules at [will.illinois.edu/tv/schedule](http://will.illinois.edu/tv/schedule)**

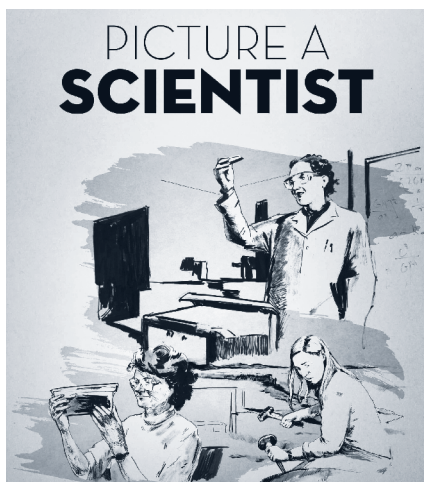


## World War II from a personal side

Combining key moments in history with compelling personal stories, **My Grandparents' War** is a new series that takes a fascinating journey into the past to understand the extraordinary impact of World War II on the families of four British actors. Helena Bonham Carter, Mark Rylance, Kristin Scott Thomas, and Carey Mulligan each host a one-hour journey into their respective family histories as they travel to historic locations, from the beaches of Dunkirk to the former site of a prisoner-of-war camp in Hong Kong, to retrace their grandparents' footsteps during the conflict that changed their lives forever. **My Grandparents' War** airs at 7 pm Sundays in April.

## Equalizing science

Today, women make up less than one quarter of all those employed in STEM occupations in the United States. These numbers are much worse for women of color: Asian, black women, and Latinas made up slightly less than 10% of working scientists and engineers in the United States in 2015. Science is supposed to be built on objectivity, and yet, most researchers agree that these bleak numbers are evidence of deep bias. But now, the terrain is shifting. **NOVA** chronicles the groundswell of women scientists who are changing the face of science in the United States and around the world. *Picture a Scientist* airs at 8 pm Wednesday, April 14.



## The original classic

An original film for television by the National Theatre, **Great Performances** presents *Romeo & Juliet* at 8 pm Friday. This stylized film of Shakespeare's masterpiece celebrates the theatrical imagination, moving from the stripped-down aesthetic of a rehearsal into a cinematic journey that embraces the architecture of the theater space and varied backstage spaces of the National's Lyttelton Theatre. In this contemporary rendering, a company of actors in a shuttered theater bring to life the tale of two young lovers who strive to transcend a world of violence and hate.





## A front-row seat to social justice

In 2017, civil rights attorney Larry Krasner mounted a longshot campaign and ultimately won the District Attorney's seat in Philadelphia. *Philly D.A.* brings viewers inside the emotional, high-stakes work that Krasner and an ensemble of idealistic outsiders from different walks of life take on as they attempt a fundamental overhaul of an expansive, entrenched criminal justice system. The **Independent Lens** film airs at 8 pm Tuesday, April 20 and 27.



## A young leader takes charge

Follow teen environmental activist Greta Thunberg as she seeks to raise awareness of the accelerating climate change. **Greta Thunberg: A Year to Change the World** premieres in its entirety as a special presentation on Earth Day at 7 pm Thursday, April 22. This revealing series follows Greta as she steps from behind the podium and onto the front lines to explore the science as she travels to extraordinary locations across the globe.



## MASTERPIECE brings new drama

A friendship forged in war is beautifully portrayed by Kyle MacLachlan as US President Franklin Roosevelt and Swedish star Sofia Helin as Norwegian Crown Princess Martha in **Atlantic Crossing**, based on a true story of passion and politics, airing in eight episodes on **MASTERPIECE** at 8 pm Sundays, April 4–May 23.

**Atlantic Crossing** ranges back and forth across the North Atlantic throughout World War II, depicting momentous events in the changing fortunes of Norway, Great Britain, and the United States.



# 1 Thursday

- 7:00 Mid-American Gardener** (TV-G)  
*Repeated 11 am 4/3.*
- 7:30 Ask This Old House** (TV-G)  
*Power Washing, Deck Lights. Repeated 4:30 am 4/3; and 4:30 pm 4/3.*
- 8:00 Midsomer Murders** (TV-PG)  
*Death in the Slow Lane, part 1.* Season 14, part 1 of 8. New DCI John Barnaby arrives in Midsomer and is bemused by the quaint villages and their quirky residents. *Repeated 8 pm 4/3.*
- 8:45 Midsomer Murders** (TV-PG)  
*Death in the Slow Lane, part 2.* Season 14, part 1 of 8. *Repeated 8:45 pm 4/3.*
- 9:30 Father Brown**  
*The Skylark Scandal.* Season 7, part 9 of 10. A lord is murdered at the hostel where Father Brown is staying.
- 10:30 Amanpour and Company**
- 11:30 BBC World News**

# 2 Friday

- 7:00 Washington Week**
- 7:30 Firing Line with Margaret Hoover**
- 8:00 American Masters** (TV-G) (DVS)  
*Never Too Late: The Doc Severinsen Story.* See article on page 1. *Repeated 2 am 4/5; and 2 am 4/7.*
- 9:30 Beyond The Canvas** (TV-PG)  
*Visionaries of the Arts.* Season 2, part 2 of 3. What does it take to make it to the top? Meet some of the people recognized at the highest levels in their fields. Conductor Michael Tilson Thomas, filmmaker Sir David Attenborough, and others reveal what it takes to achieve excellence. *Repeated 3:30 am 4/5.*
- 10:30 Amanpour and Company**
- 11:30 BBC World News**

# 3 Saturday

- 7:00 Mum** (TV-PG)
- 7:30 Still Open All Hours** (TV-PG)
- 8:00 Midsomer Murders** (TV-PG)  
*Death in the Slow Lane, part 1.* Season 14, part 1 of 8. New DCI John Barnaby arrives in Midsomer and is bemused by the quaint villages and their quirky residents.
- 8:45 Midsomer Murders** (TV-PG)  
*Death in the Slow Lane, part 2.* Season 14, part 1 of 8.
- 9:30 Shakespeare & Hathaway-Private Investigators** (TV-PG)  
*This Promised End.* Season 1, part 3 of 10. An undertaker is visited one morning by two mysterious hitmen.
- 10:30 Austin City Limits** (TV-PG)  
*Brandi Carlile.* The Seattle singer-songwriter performs highlights from her critically lauded album 'By the Way, I Forgive You.'
- 11:30 State & Water**  
*Mindy Watkins, part 1.*

# 4 Sunday

- 7:00 My Grandparents' War** (TV-PG)  
*Helena Bonham Carter.* Season 1, part 1 of 4. See article on page 10. *Repeated 2 am 4/6; and 3:30 am 4/7.*
- 8:00 Atlantic Crossing On MASTERPIECE** (TV-PG)  
Part 1 of 8. Norwegian Crown Princess Martha and her husband Prince Olav visit U.S. President Franklin Roosevelt in 1939. A year later, they must flee the Nazi invasion of their country. *Repeated 12 am 4/5; and 3 am 4/6.*
- 9:00 World On Fire On MASTERPIECE** (TV-14)  
Part 1 of 7. When war breaks out, young translator Harry vows to help his Polish lover Kasia flee Warsaw, but how will he explain this to his sweetheart Lois, waiting for him at home in Manchester? *Repeated 1 am 4/5; and 4 am 4/6.*
- 10:00 Thou Shalt Not Kill** (TV-14)  
Part 5 of 12. On a dreary, rainy day, Graziano Torri calls the police; his wife, Alessandra, who has just told him that she is pregnant, is missing. When Valeria arrives at the woman's home, she finds a mysterious and recently dug hole.
- 11:00 Thou Shalt Not Kill** (TV-14)  
Part 6 of 12. Guido, Valeria's brother, urges her to stop withdrawing from her family and her mother. After a tense altercation, Lucia understands that her family will never be able to forgive her and that perhaps it would be best for her to disappear.

# 5 Monday

- 7:00 Hemingway** (TV-PG)  
*A Writer (1899-1929).* Part 1 of 3. See article on page 3. *Repeated 9 pm 4/5; and 2 am 4/8.*
- 9:00 Hemingway** (TV-PG)  
*A Writer (1899-1929).* Part 1 of 3. *Repeated 2 am 4/8.*
- 11:00 Amanpour and Company**

# 6 Tuesday

- 7:00 Hemingway** (TV-PG)  
*The Avatar (1929-1944).* Part 2 of 3. See article on page 3. *Repeated 9 pm 4/6; and 2 am 4/9.*
- 9:00 Hemingway** (TV-PG)  
*The Avatar (1929-1944).* Part 2 of 3. *Repeated 2 am 4/9.*
- 11:00 Amanpour and Company**

# 7 Wednesday

- 7:00 Hemingway** (TV-PG)  
*The Blank Page (1944-1961).* Part 3 of 3. See article on page 3. *Repeated 9 pm 4/7.*
- 9:00 Hemingway** (TV-PG)  
*The Blank Page (1944-1961).* Part 3 of 3.
- 11:00 Amanpour and Company**

## 8 Thursday

- 7:00 Mid-American Gardener** (TV-G)  
*Repeated 11 am 4/10.*
- 7:30 Ask This Old House** (TV-G)  
*Move Baseboard, Cooler Bench. Repeated 4:30am 4/10; and 4:30 pm 4/10.*
- 8:00 Midsomer Murders** (TV-PG)  
*Dark Secrets, part 1.* Season 14, part 2 of 8. The reclusive lives of elderly eccentrics William and Mary Bingham come under police scrutiny when a social services investigator is murdered. Barnaby and Jones must unearth generations of family secrets and decipher astronomical charts to find the killer. *Repeated 8 pm 4/10.*
- 8:45 Midsomer Murders** (TV-PG)  
*Dark Secrets, part 2.* Season 14, part 2 of 8. *Repeated 8:45 pm 4/10.*
- 9:30 Father Brown**  
*The Honourable Thief.* Season 7, part 10 of 10. Lady Felicia returns to Kempleford.
- 10:30 Amanpour and Company**
- 11:30 BBC World News**

## 9 Friday

- 7:00 Washington Week**
- 7:30 Firing Line with Margaret Hoover**
- 8:00 American Masters** (TV-MA) (DVS)  
*Oliver Sacks: His Own Life.* Dive into the life and work of the legendary neurologist and beloved author who was a fearless explorer of the brain and mind. Sacks redefined our understanding of the diversity of human experience, and of our shared humanity. *Repeated 12 am 4/11, 2 am 4/11; and 2 am 4/12.*
- 10:30 Amanpour and Company**
- 11:30 BBC World News**

## 10 Saturday

- 7:00 Mum** (TV-PG)
- 7:30 Still Open All Hours** (TV-PG)
- 8:00 Midsomer Murders** (TV-PG)  
*Dark Secrets, part 1.* Season 14, part 2 of 8. The reclusive lives of elderly eccentrics William and Mary Bingham come under police scrutiny when a social services investigator is murdered. Barnaby and Jones must unearth generations of family secrets and decipher astronomical charts to find the killer.
- 8:45 Midsomer Murders** (TV-PG)  
*Dark Secrets, part 2.* Season 14, part 2 of 8.
- 9:30 Shakespeare & Hathaway-Private Investigators** (TV-PG)  
*This Rough Magic.* Season 1, part 4 of 10. Old school magician, Lawrence Pross, is in the midst of his grand finale when tragedy strikes and his unlucky volunteer is fatally trapped in his medieval iron maiden.
- 10:30 Austin City Limits** (TV-MA)  
*Janelle Monae.* Thrill to an hour with progressive R&B maverick Janelle Monae as the singer and actress performs songs from her acclaimed LP *Dirty Computer*.
- 11:30 State & Water**  
*Jared Grabb Among Thieves, part 1.*

## 11 Sunday

- 7:00 My Grandparents' War** (TV-PG)  
Mark Rylance. Season 1, part 2 of 4. Explore the story of actor Mark Rylance's grandfather, a prisoner of war in Hong Kong during WWII. *Repeated 2 am 4/13.*
- 8:00 Atlantic Crossing On MASTERPIECE** (TV-PG)  
Part 2 of 8. Olav and the king plan their escape. Meanwhile, Martha and the children take refuge with her Swedish royal relatives. But the Nazis threaten the king if he harbors the crown princess. *Repeated 12 am 4/12; and 3 am 4/13.*
- 9:00 World On Fire On MASTERPIECE** (TV-14)  
Part 2 of 7. A month into war and with Warsaw destroyed, Harry is desperate for news, while Kasia joins the Polish resistance. *Repeated 1 am 4/12; and 4 am 4/13.*
- 10:00 Thou Shalt Not Kill** (TV-14)  
Part 7 of 12. A woman's body is found on the banks of the Po River. Her name was Stefania, and she worked in a nearby Benedictine monastery. Without overlooking the obvious trail that leads to the monastery, Valeria questions Stefania's lover, Michele.
- 11:00 Thou Shalt Not Kill** (TV-14)  
Part 8 of 12. In addition to trying to discover who murdered Stefania, Valeria also must find her mother. Valeria locates Lucia at the home of Monica, Lucia's former cellmate. Valeria asks her mother to return home.

## 12 Monday

- 7:00 Antiques Roadshow** (TV-G)  
*Vintage Las Vegas 2021.* Part 1 of 2. Watch an antique asscher-cut diamond ring, a 1923 Dempsey vs. Gibbons fight bell, and a 1970 Elvis Presley-signed album and belt. *Repeated 6 pm 4/17.*
- 8:00 Antiques Roadshow** (TV-G)  
*Meadow Brook Hall, Mich.* Part 3 of 3. Magnificent Michigan treasures shine at Meadow Brook Hall, including a Civil War presentation sword and portrait; Danny Lyon Civil Rights posters; and a copy of 'The First Men in the Moon' signed by Neil Armstrong. *Repeated 4 am 4/14.*
- 9:00 Independent Lens** (TV-PG) (DVS)  
*Down A Dark Stairwell.* A Chinese American cop shoots and kills an innocent Black man in the dark stairwell of a Brooklyn housing project. Suddenly, two marginalized communities must navigate an uneven criminal justice system together. *Repeated 2 am 4/14; and 2 am 4/17.*
- 10:30 Amanpour and Company**
- 11:30 BBC World News**

## 13 Tuesday

**7:00 Finding Your Roots** (TV-PG)

*The New World.* Season 7, part 7 of 10. Henry Louis Gates, Jr. traces ancestors of actor John Lithgow and journalist Maria Hinojosa who thrived in North America long before the birth of the United States. *Repeated 4 am 4/15; 3 am 4/18; and 4 am 4/19.*

**8:00 American Experience**

*Ruby Ridge.* Examine the 1992 FBI siege at Ruby Ridge that helped launch the modern militia movement through eyewitness accounts, including Randy Weaver's daughter and federal agents involved in the deadly confrontation.

**9:00 Frontline**

*American Insurrection.* Investigating the rising threat of far-right violence in America. With ProPublica, exposing the individuals and ideologies behind a wave of crimes, culminating in the attack on the Capitol. *Repeated 1 am 4/14; and 3 am 4/15.*

**10:00 Mum** (TV-PG)

**10:30 Amanpour and Company**

**11:30 BBC World News**

## 14 Wednesday

**7:00 Nature** (TV-G) (DVS)

*The Leopard Legacy.* Follow the story of a leopard mother as she raises her cubs near the Luangwa River, facing a constant battle to hunt successfully, defend her territory and protect her cubs against enemies. *Repeated 2 am 4/18.*

**8:00 NOVA** (TV-PG) (DVS)

*Picture A Scientist.* See article on page 10. *Repeated 3 am 4/16; and 12 am 4/18.*

**10:00 Still Open All Hours** (TV-PG)

**10:30 Amanpour and Company**

**11:30 BBC World News**

## 15 Thursday

**7:00 Mid-American Gardener** (TV-G)

*Repeated 11 am 4/17.*

**7:30 Ask This Old House** (TV-G)

*Flickering Lights, Brick Stairs.* *Repeated 4:30 am 4/17; and 4:30 pm 4/17.*

**8:00 Midsomer Murders** (TV-PG)

*Echoes of the Dead, part 1.* Season 14, part 3 of 8. When a young woman is dressed like a bride and drowned in a bath, it triggers a te of ghoulish *Repeated 8 pm 4/17.*

**8:45 Midsomer Murders** (TV-PG)

*Echoes of the Dead, part 2.* Season 14, part 3 of 8. *Repeated 8:45 pm 4/17.*

**9:30 Father Brown** (TV-PG)

*The Celestial Choir.* Season 8, part 1 of 10. The choir reaches the finals, led by Mrs. McCarthy.

**10:30 Amanpour and Company**

**11:30 BBC World News**

## 16 Friday

**7:00 Washington Week**

**7:30 Firing Line with Margaret Hoover**

**8:00 Great Performances** (TV-G)

*Beethoven In Beijing.* Experience the international impact of the Philadelphia Orchestra's historic 1973 trip to China. *Repeated 2 am 4/19.*

**9:30 Beyond The Canvas** (TV-PG)

*Women of Wonder.* Season 2, part 3 of 3. Honor five trailblazing women in the arts. The legendary Dolly Parton, Julie Andrews, and other creative females reveal how the road to success wasn't just one they walked, but one they paved themselves. *Repeated 1:30 am 4/17; 3:30 am 4/17; and 3:30 am 4/19.*

**10:30 Amanpour and Company**

**11:30 BBC World News**

## 17 Saturday

**7:00 Mum** (TV-PG)

**7:30 Still Open All Hours** (TV-PG)

**8:00 Midsomer Murders** (TV-PG)

*Echoes of the Dead, part 1.* Season 14, part 3 of 8. When a young woman is dressed like a bride and drowned in a bath, it triggers a te of ghoulish wedding-themed murders in Great Worthy.

**8:45 Midsomer Murders** (TV-PG)

*Echoes of the Dead, part 2.* Season 14, part 3 of 8.

**9:30 Shakespeare & Hathaway-Private Investigators** (TV-PG)

*Toil and Trouble.* Season 1, part 5 of 10. When the Mayor of Arden is discovered murdered in his isolated cottage suspicion falls on local criminal, Billy the Brick Porters.

**11:30 State & Water**

*Cole Hollow, part 1.*

## 18 Sunday

**7:00 My Grandparents' War** (TV-PG)

*Kristin Scott Thomas.* Season 1, part 3 of 4. Follow actress Kristin Scott Thomas as she pieces together a lost chapter of her family history, learning how her grandfather, a Royal Navy officer, saved thousands at Dunkirk and survived some of World War II's most devastating battles. *Repeated 2 am 4/20.*

**8:00 Atlantic Crossing On MASTERPIECE** (TV-PG)

Part 3 of 8. While bombs fall on Olav and the king in London, Martha and the children are in the U.S., where President Roosevelt extends a special invitation. *Repeated 12 am 4/19; and 3 am 4/20.*

**9:00 World On Fire On MASTERPIECE** (TV-14)

Part 3 of 7. Tom faces the fight of his life aboard HMS Exeter, while Harry and Lois have a more personal battle to fight.

**10:00 Thou Shalt Not Kill** (TV-14)

Part 9 of 12. A young Egyptian woman, Amina Mansour, is found dying in the hammam where she works, having been attacked with a knife. Valeria wonders how Amina's family will react to her dressing in western clothes and having an Italian boyfriend.

**11:00 Thou Shalt Not Kill** (TV-14)

Part 10 of 12. Monica visits the Ferro house and upsets the reestablished harmony between Lucia and Valeria.



## 19 Monday

**7:00 Antiques Roadshow** (TV-G)  
*Vintage Las Vegas 2021.* Part 2 of 2. Have the values of Vegas treasures—including a 1943 Albert Einstein letter, an early 20th-century gold signet ring collection, and a Louis Comfort Tiffany seascape oil from around 1880—gone up, down, or stayed the same since 2007? Repeated 4 am 4/21; and 6 pm 4/24.

**8:00 American Experience** (TV-PG)  
*American Oz.* Explore the life of L. Frank Baum, the man behind one of the most beloved, enduring and quintessential American classics. *The Wonderful Wizard of Oz*, published in 1900, has been reinterpreted through the generations in films, books, and musicals. Repeated 2 am 4/21.

**10:30 Amanpour and Company**

**11:30 BBC World News**

## 20 Tuesday

**7:00 Finding Your Roots** (TV-PG)  
*Laughing on the Inside.* Season 7, part 8 of 10. Henry Louis Gates, Jr. provides comedians Lewis Black and Roy Wood, Jr. with accounts of hardship in their family trees which may have led them to each find humor in adversity. Repeated 4 am 4/22; 3 am 4/25; and 4 am 4/26.

**8:00 Independent Lens**  
*Philly D.A.* Part 1 of 3. See article on page 11. The new Philadelphia District Attorney uncovers a secret the police are desperate to hide.

**9:00 Independent Lens**  
*Philly D.A.* Part 2 of 3. Krasner and his team battle to obtain the complete police misconduct files.

**10:00 Mum** (TV-PG)

**10:30 Amanpour and Company**

**11:30 BBC World News**

## 21 Wednesday

**7:00 Nature** (TV-G) (DVS)  
*Sharks of Hawaii.* Meet the sharks that call the waters near Hawaii's islands their home. Repeated 3 am 4/23; and 1 am 4/25.

**8:00 NOVA** (TV-G) (DVS)  
*Reef Rescue.* If oceans continue to warm at the current pace, coral reefs could be wiped out by the end of the century. But scientists from around the globe are rushing to help corals adapt to a changing climate through assisted evolution. Repeated 4 am 4/23; and 12 am 4/25.

**9:00 Critical Care: America Vs. The World, PBS Newshour Presents**  
 Examine the highs and lows of America's health care system, and travel to four other nations to see how they provide health coverage affordably and thoroughly, even in the face of the pandemic. Repeated 1 am 4/22; 2 am 4/23; and 2 am 4/25.

**10:00 Still Open All Hours** (TV-PG)

**10:30 Amanpour and Company**

**11:30 BBC World News**

## 22 Thursday

**7:00 Greta Thunberg: A Year to Save The Planet** (TV-PG)  
 Part 1 of 3. See article on page 11. Repeated 2 am 4/24.

**10:30 Amanpour and Company**

**11:30 BBC World News**

## 23 Friday

**7:00 Washington Week**

**7:30 Firing Line with Margaret Hoover**

**8:00 Great Performances** (TV-PG)  
*Romeo and Juliet.* Experience a contemporary rendering of Shakespeare's romantic tragedy from the National Theatre where a company of actors in a shuttered theater bring to life the timeless tale of two young lovers. Repeated 2 am 4/26; and 2 am 4/28.

**10:30 Amanpour and Company**

**11:30 BBC World News**

## 24 Saturday

**7:00 Mum** (TV-PG)

**7:30 Still Open All Hours** (TV-PG)

**8:00 Midsomer Murders** (TV-PG)  
*The Oblong Murders, part 1.* Season 14, part 4 of 8. Jones goes undercover at the Oblong Foundation after one of the cult's young female members disappears suddenly. But he and Barnaby soon start digging into an old case involving the death of a couple in a boat explosion.

**8:45 Midsomer Murders** (TV-PG)  
*The Oblong Murders, part 2.* Season 14, part 4 of 8.

**9:30 Shakespeare & Hathaway: Private Investigators** (TV-PG)  
*Exit, Pursued by a Bear.* Season 1, part 6 of 10. It's a slow day in the office for Frank and Lu until a hysterical Sally Balthasar flies into the office in a whirlwind of tears.

**10:30 Austin City Limits** (TV-PG)  
*H.E.R.* The singer-songwriter-multi-instrumentalist plays tracks from her self-titled album and numerous EPs.

**11:30 State & Water**  
*The Kilborn Alley Blues Band, part 2.*

## 25 Sunday

**7:00 My Grandparents' War** (TV-PG)  
*Carey Mulligan.* Season 1, part 4 of 4. Follow actress Carey Mulligan as she travels to Japan to learn about her grandfather's experience as a British naval officer during World War II, including the Kamikaze attack he survived, and the extent of the devastation he witnessed. Repeated 2 am 4/27.

**8:00 Atlantic Crossing On MASTERPIECE** (TV-PG)  
 Part 4 of 8. Martha is pressured to exploit her friendship with the president, who defies isolationists to push the Lend-Lease Act. Martha and the children get a surprise Christmas present. Repeated 12 am 4/26; and 3 am 4/27.

**9:00 World On Fire On MASTERPIECE** (TV-14)  
Part 4 of 7. Harry's courage is tested at Louvain, while Kasia's resistance activity in Warsaw intensifies.

**10:00 Thou Shalt Not Kill** (TV-14)  
Part 11 of 12. Public opinion turns against a mother whose 4-year-old daughter is found dead in the car.

**11:00 Thou Shalt Not Kill** (TV-14)  
Part 12 of 12. As Valeria attempts to prove Arianna's innocence, Monica drops a stunning bombshell about Lucia.

## 26 Monday

**7:00 Antiques Roadshow** (TV-G)  
*Vintage Wichita.* Discover updated appraisals such as an Edward Onslow Ford bronze, a 1962 left-handed Fender Stratocaster, and Goldsmith Chandlee surveyor's compass from around 1790. *Repeated 4 am 4/28; and 2 am 4/29.*

**8:00 Frontline**  
*The Virus That Shook The World.* Part 1 of 2. Living the year of the pandemic, filmed around the world, from lockdowns to funerals to protests. Using extensive personal video and local footage, how people and countries responded to the virus, across cultures, race, faith and privilege.

**10:30 Amanpour and Company**

**11:30 BBC World News**

## 27 Tuesday

**7:00 Finding Your Roots** (TV-PG)  
*On Broadway.* Season 7, part 9 of 10. Henry Louis Gates, Jr. investigates the family histories of Broadway stars Audra McDonald and Mandy Patinkin, discovering ancestors whose struggles laid the groundwork for their success. *Repeated 4 am 4/29.*

**8:00 Independent Lens**  
*Philly D.A.* Part 3 of 3. The murder of a police sergeant tests the D.A.'s resolve to never seek the death penalty.

**9:00 Frontline**  
*The Virus That Shook The World.* Part 2 of 2. Part two of the epic story of people around the world living through the year of the pandemic. With extensive personal video and local footage, the film shows the differing struggles, beliefs and responses, across cultures, race, faith, and privilege. *Repeated 1 am 4/28.*

**10:00 Mum** (TV-PG)

**10:30 Amanpour and Company**

**11:30 BBC World News**

## 28 Wednesday

**7:00 Greta Thunberg: A Year to Save The Planet** (TV-PG)  
Part 1 of 3. See article on page 11.

**8:00 NOVA** (TV-PG) (DVS)  
*Fighting for Fertility.* Whether it's flash-freezing an egg to minus 197 degrees, or searching for sperm where there seems to be none, the high-tech world of assisted reproduction is ushering in a new era of possibilities. As same-sex couples, transgender individuals, single parents, and people with fertility issues have the opportunity to build a family using their own DNA, humanity is redefining what it means to reproduce. *Repeated 4 am 4/30.*

**9:00 Human: The World Within** (TV-PG)  
*React.* Part 1 of 6. Through the lens of a boxer, a first responder, a cell tower climber and a man with a bionic limb, go deep into the universe of the most powerful machine on earth: the human brain and the vast nervous system it controls. *Repeated 1 am 4/29.*

**10:00 Still Open All Hours** (TV-G)

**10:30 Amanpour and Company**

**11:30 BBC World News**

## 29 Thursday

**7:00 Mid-American Gardener** (TV-G)  
*Repeated 11 am 5/1.*

**7:30 Ask This Old House** (TV-G)  
*Echinaceas, Kitchen Punch List.* *Repeated 4:30 am 5/1; and 4:30 pm 5/1.*

**8:00 Midsomer Murders** (TV-PG)  
*The Oblong Murders, part 1.* Season 14, part 4 of 8. Jones goes undercover at the Oblong Foundation after one of the cult's young female members disappears suddenly. But he and Barnaby soon start digging into an old case involving the death of a couple in a boat explosion. *Repeated 8 pm 5/1.*

**8:45 Midsomer Murders** (TV-PG)  
*The Oblong Murders, part 2.* Season 14, part 4 of 8. *Repeated 8:45 pm 5/1.*

**9:30 Father Brown** (TV-PG)  
*The Queen Bee.* Season 8, part 2 of 10. A mother is found dead.

**10:30 Amanpour and Company**

**11:30 BBC World News**

## 30 Friday

**7:00 Washington Week**

**7:30 Firing Line with Margaret Hoover**

**8:00 International Jazz Day** (TV-G)  
*International Jazz Day 10th Anniversary Celebration.* A look back at 10 years of historic International Jazz Day concerts featuring dozens of music icons

**10:30 Amanpour and Company**

**11:30 BBC World News**

# Enjoy these exclusive BBC dramas with WILL Passport

We are excited to announce the acquisition of several new British dramas exclusively available to Friends of WILL through Passport. With streaming becoming a more popular option, the BBC has made some programs available for stations like ours to purchase for members to watch with Passport.



**The Coroner** Jane Kennedy, a solicitor, returns to South Devon, seaside town she left as a teenager to take up the post of coroner, becoming an advocate for the dead as she investigates sudden and unexplained deaths. (Stream through July 31)

**Jane Austen Collection** This special selection of Jane Austen series which includes **Mansfield Park**, **Pride and Prejudice**, **Sense and Sensibility**, and **Sanditon**. (Stream through August 31)

**Dickensian** This drama, set within the fictional world of Charles Dickens critically acclaimed novels, brings together some of his most iconic characters as their lives intertwine in 19th century London. (Stream through October 31)

## « COMING AND GOING THIS MONTH TO »



## WILL | Passport



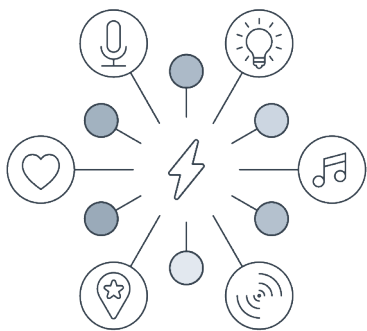
### APRIL HIGHLIGHTS

- **MASTERPIECE**  
**Downton Abbey**  
(all six seasons)  
**Atlantic Crossing**  
(stream the entire first season April 4)
- **Independent Lens**  
*Philly DA*  
(stream the entire series April 20)
- **Reel Midwest**  
*When Billy Broke His Head*  
*Unbroken Glass*
- **Europe's New Wild**

### LEAVING SOON

- **American Experience**  
*The Island Murder*
- **Austin City Limits**  
*Buddy Guy/August Greene*  
*The Best of John Prine*
- **Great Performances**  
*Andrea Bocelli @ 60*  
*will.i.am and Friends featuring*  
*The Black Eyed Peas*
- **Independent Lens**  
*A Woman's Work*
- **Nature**  
*Hotel Armadillo*  
*Spy in the Wild 2 | The Tropics*
- **Poetry in America**
- **The Address**
- **The Forgotten Coast:**  
**Return to Wild Florida**

Go to [will.illinois.edu/passport](http://will.illinois.edu/passport) to download the PBS video app and find out how you can unlock more shows with your WILL Passport.



# The Power of Public Media

## ILLINOIS PUBLIC MEDIA 2020 ANNUAL REPORT

2020 showed what we're made of: information, education, and entertainment for central Illinois. In the best of times. In the worst of times. That's the power of public media.

## From WILLNews to Illinois Newsroom

We reimagined a more statewide approach to news gathering and reporting under a newly-named Illinois Newsroom—expanding our coverage of health, education, agriculture, politics, and the environment. We also added collaborations, including WFYI's **Side Effects** to bring more stories on public health and Harvest Public Media to expand the agricultural stories we tell.



## Trusted COVID information

**166,848**

TOTAL PAGE VIEWS  
Coronavirus Information Center

When the shared experience is a global pandemic, fear of the unknown and isolation from familiar comforts and camaraderie enveloped all of us. Stepping in to inform and unite was the Coronavirus Information Center, spearheaded by Illinois Newsroom. This trusted online source provided not only multiple updates of local and state news each day, but also specialized reports from Illinois Newsroom reporters about the impacts of the coronavirus on education, agriculture, health care, and more. Adding another dimension were the personal experience stories and conversations with experts offered daily on our statewide talkshow **The 21st**.

In addition to making live video from Gov. Pritzker's daily briefings readily available, we created one-minute local coronavirus updates that aired weekdays following the *PBS NewsHour* on WILL-TV.

## Powering at-home learning

Illinois Public Media elevated its commitment to helping students learn at home by providing additional educational offerings for students of all ages, free of charge. One of the first actions was an updated WILL-TV daytime lineup of learning programs for students from pre-kindergarten through 5th grade, plus other TV resources for students in 6th through 12th grade.

Students eagerly accessed new digital resources—including apps, games, and printables, endorsed by local school districts, to support a range of academic subjects—through a dedicated at-home learning website. Parents and caregivers could also find learning materials contained in popular PBS KIDS programs, arranged by topic, on our website.

As always, materials related to those programs were also available for download on the Illinois Edition of PBS Learning Media, an online library of thousands of curated free, standards-aligned videos, interactives, and lesson plans specifically designed for teachers and students.





# Illinois' influence on country music

Serving as a companion documentary to Ken Burns' **Country Music**, Illinois Public Media's **Illinois Country** shared the personal stories of the musicians who have taken their talent from hometowns across the state to stages around the world. It also uncovered the venues and events—including the WLS Barn Dance in Chicago and FarmAid in Champaign—that contributed to the growth of this uniquely American art form.

Additional footage allowed our **Illinois Country** production team to create a six-part web series, **Voices of Illinois Country**, that offered further vignettes and performances from the artists.

Later, **Illinois Country** was honored with two Mid-America EMMY® Awards for outstanding work in the "Documentary-Cultural" category for the film as a whole and "Musical Composition/Arrangement" for its original song, "Backroads."



# Local storytelling captures pandemic experiences

Illinois Public Media also made the most of partnering with **PBS American Portrait**—a national storytelling project that opened a coast-to-coast conversation about what it truly means to be an American today and aligned with PBS's 50th anniversary.

## AMERICAN PORTRAIT:



We produced two 30-minute episodes of **American Portrait: Central Illinois** that aired on WILL-TV and were also available for streaming on the PBS Video app. In the June debut program *Living Through the Pandemic*, we heard from a pastor, a high school senior, a grocery store operator, a nurse and father, a small business owner, and an oil producer on how they were

adjusting to the economic, social, and psychological impact of the COVID-19 pandemic.

The December episode *Lift Every Voice* followed the Windy City Performing Arts choirs in Chicago, the Danville High School Madrigals, and the University of Illinois Black Chorus on the Urbana campus as they navigated new challenges to singing together and keeping people safe.

# Sharing the university's notable discoveries

The University of Illinois System's new **Rising to the Challenge** podcast shared some of the breakthrough discoveries from the Illinois campuses in Urbana-Champaign, Chicago, and Springfield to help meet our world's most pressing challenges.



Debuting in September, this series of six episodes detailed how the university came together to battle the coronavirus—from creating a rapid, saliva-based detection test to addressing the educational, economic, and social challenges brought on by the COVID-19 pandemic.

The entire 2020 Annual Report can be viewed and downloaded at [will.illinois.edu/about/annualreports](http://will.illinois.edu/about/annualreports). To view a complete audited financial statement, please visit [will.illinois.edu/about/compliance](http://will.illinois.edu/about/compliance).

## Uni High students create radio documentary

University of Illinois Laboratory High School students worked with Illinois Public Media to create a powerful documentary focused on local immigrants and their effects in the central Illinois community. **Immigrants' Journeys: Challenges and Opportunities in Champaign-Urbana** will air on WILL-AM at 7 pm Friday, April 23, with repeats at 1 pm and 8 pm Sunday, April 25.

With an immigrant population of about 12%, Champaign County represents one of the largest immigrant communities in Illinois. Of this population, approximately 30% are undocumented. In an effort to share the stories of immigrants in the local community and explore the history and current state of immigration in the United States, Uni High students interviewed immigrants, refugees, asylum seekers, and allies in the Champaign-Urbana community.

"We are grateful for all of the immigrants and migrants who came to Champaign-Urbana against great odds who were willing to tell us their stories as well as those who worked alongside them as advocates. They trusted

both Uni High and WILL and now these stories will help tell the larger story of our rich and diverse community," says Kimberlie Kranich, director of community content and engagement.

The impact of the collaboration was felt by the students as well. "I've learned so much about telling stories through audio, about Champaign-Urbana's rich immigration history, and about the powerful work so many different activists and organizations are doing for our community," said Annette Lee, one of the Uni High students. Nathalie Leifs agreed. "I'm the child of immigrants myself and have always been surrounded by many first-generation Americans, so it's incredibly meaningful to tell their stories. I'm so grateful for the chance to do so, and thankful to everyone at WILL for their support!"

The project also highlights the importance of teaching public media to the next generation. "I learned about the importance of having a conversation. Everyone's perspective has the potential to enrich your own, you just have to open the door," said Uni alum Abraham Han.

## On the next episode of Classical BTS

**Classical:BTS** Season 2 continues with a look at one of the world's premiere pipe organ makers, whose home base just happens to be right here in Champaign-Urbana.

John Paul Buzard was originally captivated by the complex anatomy and sound of pipe organs after an organist asked him to squeeze

into the inner workings of one to make a repair when he was just five years old. Now, he is passionate about making each organ the best piece of artistry he can for the space and the sonic needs of the client.

Buzard imports his pipes from Germany, and his highly specialized staff hand makes almost

every part of the organs they produce, which are constructed in his facility on Hill Street in Champaign. The facility was originally a women's boarding house, but Buzard purchased it back in the 1980s and renovated it specifically for the purpose of building massive pipe organs.

Follow John Paul Buzard's remarkable journey on the next episode of **Classical:BTS**, premiering 7 pm Thursday, April 29 on Facebook, WILL-TV, the PBS Video App, and [will.illinois.edu/classicalbts](http://will.illinois.edu/classicalbts).



## Thank you, Program Underwriters!

Private support accounts for the largest single source of funds necessary to make Illinois Public Media and the WILL stations great resources for communities across central Illinois.

We appreciate the following organizations that have stepped forward to join the individuals and families who support award-winning public media services.

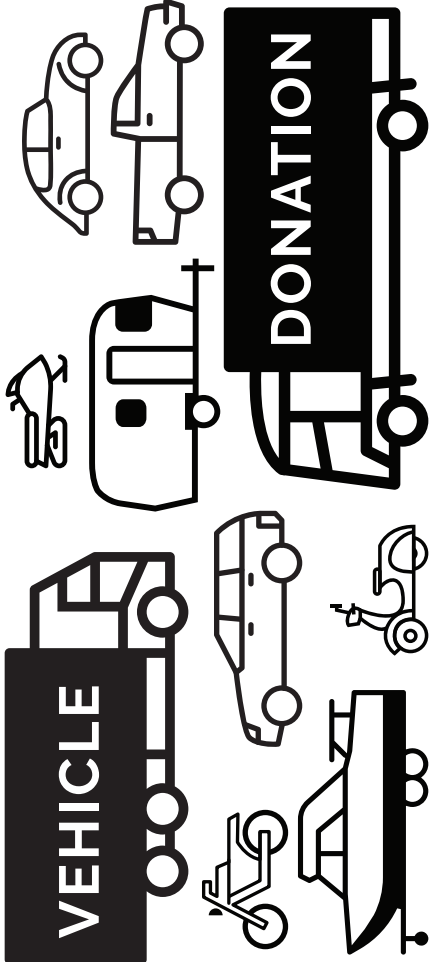
Allerton Park Conference Center  
Ameren IL  
Beckman Institute  
Beef House  
Big Grove Tavern  
Birch Tree Counseling  
Bloomington-Normal CVB  
Blue Moon Farms  
BodyWork Associates  
Busey  
Center for Advanced Study  
Center for Global Studies  
Central Illinois Regional Airport  
Champaign Danville Overhead Doors  
Champaign Public Library  
Champaign-Urbana Spinners and Weavers Guild  
Champaign-Urbana Symphony  
Cheese & Crackers  
Christie Clinic  
City of Urbana – Market @ The Square  
Christie Clinic  
Clark-Lindsey Village

Columbia Street Roastery  
Common Ground  
Community Foundation  
Community Shares of Illinois  
CU Folk and Roots Festival  
CU Woodshop  
Delta Dental  
European Union Center  
Farm Credit  
Great Value Storage  
Humanities Research Institute  
Illinois Arts Council  
Illini Mattress  
Illinois State University  
Krannert Art Museum  
Krannert Center for the Performing Arts  
Landscape Recycling Center  
Leek & Sons Funeral Home  
Midwest Renewable Energy Association  
Minuteman Press  
NAI Central Illinois  
Natural Gourmet  
Office of the Vice Chancellor for Diversity

Patterson Office Supplies  
Prairie Enthusiasts  
Prairie Rivers Network  
Pride Outdoor Services  
Rental City  
Research Park  
Riggs Beer Company  
Silvercreek  
St. Joseph Apothecary  
Strategic Farm Marketing  
Sweeney Brothers Fine Flooring  
Techline  
Ten Thousand Villages  
The Land Connection  
Thomas-Mamer, LLP  
TrophyTime  
The University of Chicago Professional Education  
The University of Chicago-Graham College  
University of Illinois Chancellor's Office  
U of I Press  
Urbana Free Library  
Vision Point Eye Center  
Wesley United Methodist Church



Friends of WILL  
Campbell Hall  
300 North Goodwin Avenue  
Urbana, IL 61801-2316



**Your old vehicle can help drive  
great public media programs.**

To learn more about donating your vehicle to WILL,  
call 855-845-1960 or go to [will.illinois.edu/cardonation](http://will.illinois.edu/cardonation).

## **MOVING?** Let your public broadcasting membership move with you.

Fill out the form below and send it with your address to:

**Friends of WILL, 300 North Goodwin Avenue, Urbana, IL 61801-2316**

- ☐ Check here if you wish to remove your name from our membership list.
- ☐ Please update my membership with this new address:

Name: \_\_\_\_\_

Street: \_\_\_\_\_

City: \_\_\_\_\_ State: \_\_\_\_\_ Zip: \_\_\_\_\_

Phone: (    )       Email: \_\_\_\_\_

Go to [will.illinois.edu/optout](http://will.illinois.edu/optout) to go green & receive *Patterns* digitally.

NONPROFIT  
ORGANIZATION  
U.S. POSTAGE PAID  
CHAMPAIGN, IL  
PERMIT NO. 453