

# Patterns

February 2019

*Won't You Be?  
My Neighbor?*



Membership Hotline: 800-898-1065  
WILL AM-FM-TV: 217-333-7300  
Campbell Hall  
300 N. Goodwin Ave., Urbana, IL 61801-2316

### Mailing List Exchange

Donor records are proprietary and confidential.  
WILL does not sell, rent or trade its donor lists.

### Patterns

*Friends of WILL Membership Magazine*  
Editor/Art Designer: Sarah Whittington  
Art Director: Kurt Bielema

Printed by Premier Print Group.



Printed with SOY INK  
on RECYCLED,  
RECYCLABLE paper.

### RADIO

**90.9 FM:** A mix of classical music and NPR information programs, including local news. (Also with live streaming on [will.illinois.edu](http://will.illinois.edu).)  
*See pages 4-5.*

**101.1 FM and 90.9 FM HD2:** Locally produced music programs and classical music from C24. (101.1 is available in the Champaign-Urbana area.) *See page 6.*

**580 AM:** News and information, NPR, BBC, news, agriculture, talk shows. (Also heard on 90.9 FM HD3 with live streaming on [will.illinois.edu](http://will.illinois.edu).) *See page 7.*

### TELEVISION

#### WILL-HD

All your favorite PBS and local programming, in high definition when available. 12.1; Contact your cable or satellite provider for channel information. *See pages 9-16.*

#### WILL Kids 24/7

Around the clock, award-winning children's programming. 12.2; also available on Comcast and Mediacom.

#### WILL Create

Cooking, travel, gardening and home improvement, arts and crafts. 12.3; also available on Comcast and Mediacom. *See page 8.*

#### WILL World

PBS documentaries, news and public affairs. 12.3; also available on Comcast and Mediacom. *See page 8.*

### ONLINE

[will.illinois.edu](http://will.illinois.edu)



[facebook.com/WILLradiotvonline](https://www.facebook.com/WILLradiotvonline)



[@willpublicmedia](https://twitter.com/willpublicmedia)



[@willpublicmedia](https://www.instagram.com/willpublicmedia)

### Get Aircheck

Video previews, behind-the-scenes information, program schedule updates and more, delivered every weekend to your email inbox.

[will.illinois.edu/aircheck](http://will.illinois.edu/aircheck)

# Patterns

February 2019 Volume XLVI, Number 8



Recently one of our sustaining members emailed to let us know how much she appreciated public media. She said:

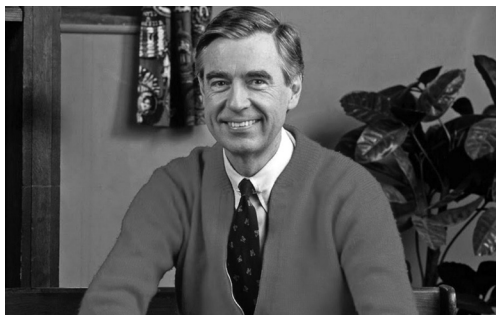
I mostly listen to podcasts: **1A, Believed, Code Switch, Embedded, Fresh Air, Hidden Brain, NPR News Now, NPR Politics, Planet Money, Pop Culture Happy Hour, The Indicator, Up First.**

These podcasts give me my news "on the go"...no matter where I am, when I'm ready to listen, they are downloaded and available to me to digest as my time permits... NPR is my #1 news source, and I greatly appreciate it.

I love to get letters like this because it shows the diversity of public media. Our Friends use our stations in a variety of ways, whether its live radio and television, podcasts, online articles, or streaming through Passport. With a sustaining gift, donors are able to support not only WILL's work directly, but also all that PBS and NPR provide. Whatever your needs, we rise to the challenge and continue our mission of enriching lives through the power of public media.

Moss Bresnahan,  
President and CEO

Twitter: @MossILMedia



# Won't You Be My Neighbor?

## documentary premieres on PBS

For over 30 years, Fred Rogers, an unassuming minister, puppeteer, writer, and producer was beamed daily into homes across America.

In his beloved television program, **Mister Rogers' Neighborhood**, Fred and his cast of puppets and friends spoke directly to young children about some of life's weightiest issues in a simple, direct fashion. There hadn't been anything like Mr. Rogers on television before and there hasn't been since.

Though he may be best known today as a soft-spoken, cardigan-wearing children's television host, in reality, Fred Rogers' career represents a sustained attempt to present a coherent, beneficent view about how we should best

speak to children about important matters and how television could be used as a positive force in our society.

In **Won't You Be My Neighbor?**, Academy Award-winning filmmaker Morgan Neville (*Twenty Feet from Stardom*) looks back on the legacy of Fred Rogers, focusing on his radically kind ideas. While the nation changed around him, Fred Rogers stood firm in his beliefs about the importance of protecting childhood. Neville pays tribute to this legacy with the latest in his series of highly engaging, moving documentary portraits of essential American artists. The film airs at 7 pm Saturday, February 9 for a one-night-only special event.



# Reel Midwest continues at 9pm Thursdays



## **Gun Shop | February 7**



Go behind the scenes at a gun shop in Michigan where customers come to get advice, handle the weapons, and practice at the on-site shooting range.

Each has their own rationale for wanting to own a gun, some thoughtful, and some shocking. All are thought-provoking.

## **In the Game | February 21**



Follow a girls soccer team on Chicago's south side as they face problems at home, uncertain futures, discrimination, and poverty. However, thanks

to their team camaraderie and dedicated coach, they remain undaunted in their pursuits of higher education.

## **On Beauty | February 14**



In hopes to change the way we see and experience beauty, fashion photographer Rick Guidotti refocuses his lens on those too often relegated to the shadows.

His photos challenge our narrow scope of beauty and the dehumanizing black-bar convention of medical textbooks.

## **The Way to Andina | February 28**



This is a witty and surprisingly comical personal journey that begins with the discovery of a long-lost opera. Led by the composer's great-

grandson, who knows nothing about opera, the show will be put on for a world premiere 80 years after it was written.

## American Masters presents Sammy Davis, Jr. and Charley Pride

For Black History Month, **American Masters** presents two specials on great musicians who broke racial barriers.

At 8 pm Tuesday, February 19, *Sammy Davis, Jr.: I've Gotta Be Me* premieres. Explore the entertainer's vast talent and journey for identity through the shifting tides of civil rights and racial progress during 20th-century America. Features Billy Crystal, Whoopi Goldberg, and clips from his TV, film and concert performances.

Then at 8 pm Friday, February 22, watch *Charley Pride: I'm Just Me*. Examine the complicated history of the American South and its music through the life of country star Charley Pride. Raised in segregated Mississippi, his journey shows the ways that artistic expression can triumph over prejudice and injustice. Enjoy this special in anticipation of Ken Burns' country music documentary, premiering on WILL-TV in the fall of 2019.



# AARP honors Shirley MacLaine

Shirley MacLaine will receive AARP The Magazine's 2018 Movies for Grownups Career Achievement Award, the publication announced. MacLaine will be honored at the 18th annual **Movies for Grownups Awards ceremony** at 8 pm Friday, February 15.

The AARP Movies for Grownups multimedia franchise was established in 2002 to celebrate and encourage filmmaking with unique appeal to movie lovers with a grownup state of mind and recognize the inspiring artists who make them.

MacLaine's remarkable career comprises more than 50 feature films highlighted by an Academy Award win and six nominations, seven Golden Globe Awards—including the Cecil B. DeMille Award for Lifetime Achievement—and six Emmy Award nominations. She is also an international bestselling author of 15 books. "The award means a lot to me personally," said MacLaine. "Many thanks to AARP for bestowing this award."



WEEKDAYS

6 am

NPR Morning Edition

with Steve Inskeep, Rachel Martin, David Greene, and Noel King

9 am

Classic Mornings with Vic Di Geronimo

Join Vic for music and companionship and make each morning a classic morning!

Noon

Afternoon Classics

NPR News Headlines at 12:01, 1:01, and 3:01.

5 pm

NPR All Things Considered

with Ailsa Chang, Audie Cornish, Mary Louise Kelly, and Ari Shapiro

7 pm

The Evening Concert

Great performances from the great concert venues. Also on Sundays from 7-9 pm. Listings are subject to change.

Monday:

The New York Philharmonic This Week

- 2/4 **There, in the Night**  
Schoenberg: Verklärte Nacht  
(Transfigured Night)  
Pierre Boulez, conductor  
Stravinsky: The Song of the Nightingale  
Leonard Bernstein, conductor  
Mussorgsky: Night on Bald Mountain  
Alan Gilbert, conductor
- 2/11 Conrad Tao: Everything Must Go  
Bruckner: Symphony No. 8  
Jaap van Zweden, conductor
- 2/18 **Aspects of Love**  
Alan Gilbert, conductor  
Tchaikovsky: Romeo and Juliet Fantasy-Overture  
Wagner: Siegfried-Idyll
- 2/25 Britten: Violin Concerto  
Simone Lamsma, violin  
Shostakovich: Symphony No. 7, "Leningrad"  
Jaap van Zweden, conductor

Tuesday:

Chicago Symphony Orchestra

- 2/5 **Bychkov conducts Brahms**  
Brahms: Violin Concerto in D Major, Op. 77  
Brahms: Symphony No. 1 in C Minor, Op. 68  
Barber: Overture to "The School for Scandal"
- 2/12 **Neeme Järvi and Alisa Weilerstein**  
Smetana: Selections from "The Bartered Bride"  
Barber: Cello Concerto, Op. 22  
Dvořák: Symphony No. 5 in F Major, Op. 76
- 2/19 **Riccardo Muti and Kirill Gerstein**  
Strauss: Suite from "Le bourgeois gentilhomme"  
Brahms: Piano Concerto No. 1 in D Minor  
Mussorgsky: A Night on Bald Mountain
- 2/26 **Riccardo Muti and Yo-Yo Ma**  
Shostakovich: Festive Overture  
Shostakovich: Cello Concerto No. 2  
Prokofiev: selections from "Romeo and Juliet," Op. 64

Wednesday:

Pittsburgh Symphony Orchestra

- 2/6 Manfred Honeck, conductor  
James Ehnes, violin  
Stucky: Silent Spring  
Tchaikovsky: Violin Concerto  
Brahms: Symphony No. 4
- 2/13 Manfred Honeck, conductor  
Beethoven: Leonore Overture No. 3  
Haydn: Symphony No. 88  
Stravinsky: Suite from "The Firebird"
- 2/20 Pablo Heras-Casado, conductor  
Maximilian Hornung, cello  
Rimsky-Korsakov: Capriccio espagnol  
Shostakovich: Cello Concerto No. 1  
Tchaikovsky: Symphony No. 1, "Winter Dreams"
- 2/27 Manfred Honeck, conductor  
Mendelssohn Choir of Pittsburgh  
Matthew Mahaffey, director  
Verdi: Requiem

Thursday:

Deutsche Welle Festival Concerts

- 2/7 **Sound of Dresden**  
Dresden Festival Orchestra  
Brahms: Violin concerto in D Major, Op. 77  
Thomas Zehetmair, violin  
Brahms: Symphony No. 2 in D Major
- 2/14 **Lieder in Heidelberg**  
Anna Stephany, mezzo-soprano  
Schumann: Der Nussbaum (The Nut Tree) and Hochländisches Wiegenlied (Highland Lullaby) from the song cycle "Myrthen"
- 2/21 **Eight Bridges**  
Zimmermann: Symphony in one movement  
Zimmermann: Music for King Ubu's Suppers
- 2/28 **Bachfest Leipzig**  
St. Thomas Boy Choir  
Schein: Herr Gott, dich loben wir (Lord God, we praise you - Te Deum laudamus)  
Bach: Mass in F Major, BWV 233

Friday:

Prairie Performances

Concerts are subject to availability.

- 2/1 Classically Black: Florence Beatrice Price (2006)
- 2/8 Classically Black: William Grant Still (1995)
- 2/15 Classically Black: Duke Ellington (1996)
- 2/22 Classically Black: Paul Robeson (1998)

9 pm

Night Music

Gillian Martin, Bob Christiansen, Ward Jacobson, or Scott Blankenship keep you company through the night and into the morning. **NPR News Headlines** at 9:01.

SATURDAYS

7 am

NPR Weekend Edition

with Scott Simon

9 am

Classics By Request

Submit requests to Vincent Trauth at [classreq@illinois.edu](mailto:classreq@illinois.edu) or **217-265-5064**.

**11 am****Classics of the Phonograph**

John Frayne's weekly exploration of memorable recordings from the 20th century.

- 2/2 The Baroque Revival on 1950s LP Recordings
- 2/9 Great Cellists of the 20th Century
- 2/16 Franz Schubert Piano Music, Turned Into a Symphony!
- 2/23 Post World War German Composers, a Lost Generation on Records?

**Noon****Afternoon at the Opera**

The Metropolitan Opera Series

Operas are sung in the original language, except where noted.

- 2/2 Carmen (Bizet). Louis Langrée cond., with Clémentine Margaine (Carmen); Roberto Alagna (Don José), Alexander Vinogradov (Escamillo), Aleksandra Kurzak (Micaëla) and the Met Opera Ensemble.
- 2/9 Iolanta (Tchaikovsky) and Bluebeard's Castle (Bartók). Henrik Nánási cond. Iolanta cast: Sonya Yoncheva (Iolanta), Matthew Polenzani (Vaudémont), Alexey Markov (Robert), and the Met Ensemble. Bluebeard's Castle: cast: Angela Denoke (Judith), Gerald Finley (Bluebeard), and the Met Ensemble.
- 2/16 Don Giovanni (Mozart). Cornelius Meister, cond., with Luca Pisaroni (Giovanni), Rachel Willis-Sørensen (Anna), Ildar Abrazakov (Leporello), Frederica Lombardi (Elvira), Aida Garifullina (Zerlina), and the Met Ensemble.
- 2/23 Rigoletto (Verdi). Nicola Luisotti, cond., with Roberto Frontali (Rigoletto), Nadine Sierra (Gilda), Vittorio Grigolo (Duke), and the Met Ensemble.

**4 pm****NPR All Things Considered**

with Michel Martin

**5 pm****Performance Today Weekend**

Host Fred Child presents a two-hour weekly program that features classical music in concert from American Public Media studios and sites across the nation and around the world, as well as classical music news, interviews and features. **[Also Sundays at 2 pm]**

**7 pm****The Midnight Special**

Rich Warren presents folk music and farce, show tunes and satire, traditional and contemporary with gentle irreverence and candid observation.

**9 pm****American Parlor Songbook**

JP Houston and Julie Van Dusen feature clever songs, charming stories, and hilarious sketches every week.

**NPR News Headlines** at 9:01.

**10 pm****Classics All Night**

**NPR News Headlines** at 10:01

**SUNDAYS****7 am****NPR Weekend Edition**

with Lulu Garcia-Navarro

**9 am****Sunday Baroque**

**NPR News Headlines** at 9:01 and 10:01.

**1 pm****The Record Shelf****2 pm****Performance Today Weekend****4 pm****NPR All Things Considered**

with Michel Martin

**5 pm****Classical Music****7-8 pm****The Evening Concert****The Chamber Music Society of Lincoln Center**

- 2/3 **Dance!**  
Debussy: Danse sacrée et Danse profane for Harp, Two Violins, Viola, Cello, and Bass  
Dvorak: Quintet in G Major for Two Violins, Viola, Cello, and Bass
- 2/10 **Osvaldo Golijov**  
Golijov: Yiddishbuk: Inscriptions for String Quartet  
St. Lawrence String Quartet  
Golijov: The Dreams and Prayers of Isaac the Blind for Clarinet and String Quartet
- 2/17 **Major to Minor**  
Haydn: Quartet in E-flat Major for Strings, Hob. III:71, Op. 71, No. 3  
Miro Quartet  
Mendelssohn: Trio No. 2 in C Minor for Piano, Violin and Cello, Op. 66
- 2/24 **Korngold**  
Korngold: Four Pieces for Violin and Piano from the Incidental Music to Shakespeare's Much Ado About Nothing, Op. 11  
Danbi Um, violin  
Orion Weiss, piano

▼ The St. Lawrence String Quartet performs at the Chamber Music Society of Lincoln Center at 7 pm Sunday, February 10.





## WEEKDAYS

**6–9 am**

**Classical Music**

**9 am–noon**

**Classic Mornings  
with Vic Di Geronimo**

Join Vic for music and companionship and make each morning a classic morning!

**Noon–overnight  
Classical Music**

**Friday 7-9 pm**

**Prairie Performances**

Roger Cooper presents regional concerts throughout the WILL listening arch.

## SATURDAYS

**7–9 am**

**Classical Music**

**9–11 am**

**Classics by Request**

Vincent Trauth plays requests at this time each Saturday. Submit requests at [classreq@illinois.edu](mailto:classreq@illinois.edu) or 217-265-5064.

**11 am–noon**

**Classics of the Phonograph**

John Frayne's weekly exploration of memorable recordings from the 20th century. See page 5 for listings.

**Noon–overnight  
Classical Music**

## SUNDAYS

**All day**

**Classical Music**



Programs on WILL Radio are partially sponsored by a grant from the Illinois Arts Council, a state agency.

**8-9 pm**

**The Evening Concert**

**Early Music Now**

2/3

**A Lübeck Abendmusik**

Buxtehude's Advent concert series "Abendmusik" was so popular, police had to be on hand for crowd control! This week's show gives an idea of its popularity

2/10

**Dutch Treats**

Many talented composers were born in the Netherlands, like Huygens, Wassenaer, and Reincken plus the most famous Dutch composer of them all: Sweelinck

2/17

**Sounds of Distant Lands**

Italians Geminiani and Matteis were captivated by Scottish melodies, Telemann wrote a Polish Concerto, and Bach was fascinated by the sounds of Italy

2/24

**A More Subtle Art**

The late 14th century was a time of experimentation. Composers attained new heights of rhythmic and melodic complexity

**9 pm**

**Classical Music**

**10 pm**

**Harmonia**

Angela Mariani presents Baroque and early music.

**NPR News Headlines** at 10:01.

**11 pm**

**The Romantic Hours**

Music, poetry and romance with Mona Golabek.

**midnight**

**Classical Music**

▼ Anna Stephany performs at the Deutsche Welle Festival Concert at 7 pm Tuesday, February 14.



Photo: Courtesy of Marco Borggreve

Monday - Friday		Saturday		Sunday
NPR Morning Edition with Brian Moline		5:00	BBC Overnight Continued	BBC World Service
		6:00	Commodity Week	Inside Europe
		6:30	State Week in Review	
		7:00	NPR Weekend Edition	NPR Weekend Edition
1A		9:00	The Splendid Table	It's Been A Minute with Sam Sanders
		10:00	Wait Wait ... Don't Tell Me	
The 21st with Niala Boodhoo	Statewide (F)	11:00	Ask Me Another	Says You
Here & Now with Jason Croft		Noon	This American Life	Wait, Wait... Don't Tell Me
		1:00	The Moth Radio Hour	The Treatment
		1:30		State Week in Review
The Closing Market Report		2:00	Radiolab	Reveal
BBC Business Daily	Commodity Week (F)	2:30		
Fresh Air		3:00	TED Radio Hour	On the Media
All Things Considered with Steve Morck		4:00	All Things Considered	All Things Considered
		5:00	Science Friday	The People's Pharmacy
		6:00	Big Picture Science	Travel with Rick Steves
The 21st (repeat)		7:00	Living on Earth	To the Best of Our Knowledge
Fresh Air (repeat)		8:00	Latino USA	
BBC World Service	Science Friday (F)	9:00	Alternative Radio	New Dimensions
		10:00	Commonwealth Club	Le Show
		11:00	Left, Right, and Center	BBC World Service
		12:00- 5 am	BBC World Service	

Bold Listing = National/International News



AGRICULTURE

Todd Gleason, host, Closing Market Report & Commodity Week

Opening Market Report: 8:55 am; Market Update: 10:58; Midday Market Report: 12:58 pm;  
Closing Market Report: 2:06 pm. Fridays: Commodity Week: 2:36 pm; Grain Market Summary: 4:32 pm.  
To listen to archived ag reports, sign up for the Illinois Public Media Ag E-newsletter,  
or download our agricultural podcasts, visit [www.willag.org](http://www.willag.org)



ILLINOIS PUBLIC MEDIA NEWS

Scott Cameron, executive editor, Illinois Newsroom  
Brian Moline, managing editor, Illinois Public Media

The news from Illinois Public Media's award-winning staff of reporters, hosts, and producers—Niala Boodhoo, Anna Casey, Lee Gaines, Christine Herman, Robin Linn, Jim Meadows, Brian Moline, and Alan Montecillo—can be heard during Morning Edition, The 21st, Here & Now, and All Things Considered.



WEATHER

MONDAY-FRIDAY

AM: 6:09, 6:20, 6:35, 6:50, 7:09, 7:20, 7:35, 7:50, 8:09, 8:20, 8:35, 8:50  
PM: 12:37, 4:06, 4:35, 5:06, 5:35

**Arts and Crafts—5-6 am; 11 am-noon**

**Sun and Wed:** Knit and Crochet Now!; Painting with Wilson Bickford

**Mon:** Quilting Arts; Paint This with Jerry Yarnell

**Fri:** Quilt and Porter's Love of Quilting; Paint This with Jerry Yarnell

**Tue:** Best of Sewing with Nancy; Best of the Joy of Painting

**Thu:** It's Sew Easy; Best of the Joy of Painting

**Cooking—6-8 am; noon-2 pm**

**Sun and Wed:** New Scandinavian Cooking; Ciao Italia; Baking with Julia; George Hirsch Lifestyle

**Mon:** Ellie's Real Food; New Orleans Cooking with Kevin Belton; Jazzy Vegetarian; Food Over 50/Iowa Ingredients (begins 2/25)

**Fri:** Ellie's Real Food; New Orleans Cooking with Kevin Belton; Jazzy Vegetarian; Food Over 50

**Tue:** Healthful Indian Flavors; Julie Taboulie's Lebanese Kitchen; Dining with the Chef; Annabel Langbein: To Dine with Kate Sullivan

**Thur:** Healthful Indian Flavors; Julie Taboulie's Lebanese Kitchen; Mexico—One Plate at a Time/ Yan Can Cook: Spice Kingdom (begins 2/14); To Dine with Kate Sullivan

**Travel—8-9 am; 2-3 pm**

**Sun:** Trails to Tsukui; Journeys in Japan

**Wed:** Smart Travels-Europe with Rudy Maxa; Wild Travels

**Mon:** Destination Craft with Jim West/Mississippi Roads (begins 2/25); Joseph Rosendo's Travelscope

**Fri:** Destination Craft with Jim West; Joseph Rosendo's Travelscope

**Tue and Thu:** Family Travel with Colleen Kelly; Curious Traveler

**Gardening/Home Improvement—9-11 am**

**Mon:** This Old House; American Woodshop; P. Allen Smith's Garden Home; Beads, Baubles, and Jewels

**Fri:** This Old House; American Woodshop; P. Allen Smith's Garden Home; Visionkeepers

**Tue and Thu:** Rough Cut with Fine Woodworking: Craftsman's Legacy; Woodsmith Shop; Growing a Greener World; Make It Artsy

**Wed and Sun:** Ask This Old House; Woodwright's Shop; Garden Smart; Start Up

**Weekend Marathons—5-11 am Saturday;**

**11 am-5 pm Sunday**

**Feb 2/3: Cook's Country Big Game Snack Attack** Impress with a Super spread for the game.

**Feb 9/10: Chinese New Year**

Celebrate the year of the pig and explore China.

**Feb 16/17: Quilt History**

Watch the 7-part documentary *Why Quilts Matter*

**Feb 23/24: Winter Wonderland**

Enjoy the best of wintertime bliss.

**Monday-Friday**

**9:00** PBS NewsHour

**10:00** Nightly Business Report

**10:30** The Day

**Mondays**

**7:00** AfroPop: The Ultimate Cultural Exchange (2/4, 2/11, 2/18)

**8:00** Life on the Line (2/4, 2/11, 2/18); Local USA (2/25)

**8:30** Stories from the Stage

**11:00** Reel South (2/4); Take On America with Ozy (2/11); In Their Own Words (2/18); The Talk-Race In America (2/25)

**Tuesdays**

**7:00** America Reframed

**8:00** Independent Lens: A Ballerina's Tale (2/5); John Lewis-Get in the Way (2/12); AfroPop: The Ultimate Cultural Exchange (2/19)

**8:30** Our American Family: The Clarks (2/26)

**11:00** America Reframed

**Wednesdays**

**7:00** Independent Lens: Black Memorabilia (2/6)

**8:00** Frontline (2/6, 2/13, 2/20); Talking Black In America (2/20)

**11:00** Independent Lens: Black Memorabilia (2/6); Independent Lens: Hale County This Morning, This Evening (2/13); POV: Minding The Gap (2/20); Independent Lens: People's Republic of Desire (2/27)

**Thursdays**

**7:00** Dictator's Playbook (2/7, 2/14); Secrets of the Dead (2/21)

**8:00** Black Women In Medicine (2/7); Power to Heal: Medicare and the Civil Rights Revolution (2/14); Secrets of the Dead (2/21, 2/28)

**11:00** NOVA

**Fridays**

**7:00** American Experience: Surviving The Dust Bowl (2/1); Redeeming Uncle Tom: The Josiah Henson Story (2/8); American Experience: The Greely Expedition (2/15); American Experience: Sealab: (2/22)

**8:00** George Washington Carver: An Uncommon Life (2/1); Backs Against The Wall: The Howard Thurman Story (2/8); 1964: The Fight for a Right (2/15); American Experience: Space Men (2/22)

**11:00** Independent Lens: Birth of a Movement (2/1); Mr. Civil Rights: Thurgood Marshall and the NAACP (2/8); Margaret: The Rebel Princess (2/15, 2/22)

**Saturdays**

**7:00** The Jazz Ambassadors (2/2); Deep City: The Birth of the Miami Sound (2/9); Great Performances: Movies for Grownups Awards 2019 (2/16); American Masters: Sammy Davis, Jr. (2/23)

**8:00** We Knew What We Had: The Greatest Jazz Story Never Told (2/2); Dreamland (2/9)

**9:00** America Reframed

**10:00** John Lewis-Get in the Way (2/16); AfroPop: The Ultimate Cultural Exchange (2/23)

**10:30** Grooming A Generation (2/2)

**11:00** The Jazz Ambassadors (2/2); Deep City: The Birth of the Miami Sound (2/9); Great Performances: Movies for Grownups Awards 2019 (2/16); American Masters: Sammy Davis, Jr. (2/23)

**Sundays**

**7:00** Nature

**8:00** Finding Your Roots

**9:00** Independent Lens: The Black Panthers: Vanguard of the Revolution (2/3); POV: Whose Streets? (2/10); POV: Presenting Princess Shaw (2/17); American Masters: Charley Pride: (2/24)

**10:00** In Tune: The Ben Tucker Story (2/24)

**10:30** Graceful Voices (2/10); Reel South (2/17)

**11:00** Nature



Monday - Friday		Saturday	Sunday
Newsline	5:00	Mister Rogers' Neighborhood	Mister Rogers' Neighborhood
Body Electric (M,W,F) Sit and Be Fit (T, Th)	5:30	Splash and Bubbles	Splash and Bubbles
Ready Jet Go!	6:00	Sesame Street	Sesame Street
Wild Kratts	6:30	Daniel Tiger's Neighborhood	Daniel Tiger's Neighborhood
Nature Cat	7:00	Pinkalicious & Peterrific	Pinkalicious & Peterrific
Curious George	7:30	Curious George	Curious George
Let's Go Luna!	8:00	Let's Go Luna!	Let's Go Luna!
Daniel Tiger's Neighborhood	8:30	Nature Cat	Nature Cat
Daniel Tiger's Neighborhood	9:00	Ready Jet Go!	Ready Jet Go!
Pinkalicious & Peterrific	9:30	Wild Kratts	Cyberchase
Sesame Street	10:00	Motorweek	Consuelo Mack Wealthtrack
Splash and Bubbles	10:30	Around the Farm Table	To the Contrary
Dinosaur Train	11:00	Mid-American Gardener	Firing Line with Margaret Hoover
The Cat in the Hat	11:30	Growing a Greener World	Market to Market
Sesame Street	Noon	America's Test Kitchen	<b>2/3</b> 12:00 The Great British Baking Show 1:00 The Great British Baking Show 2:00 The Great British Baking Show <b>2/10</b> 12:00 Backs Against The Wall: The Howard Thurman Story 1:00 Redeeming Uncle Tom: The Josiah Henson Story 2:00 Talking Black In America <b>2/17</b> 12:00 Confucius Was A Foodie 1:00 Confucius Was A Foodie 2:00 Taste The Florida Keys with Chef Michelle Bernstein <b>2/23</b> 12:00 Great Performances at the Met 2:30 Portraits In Architecture
Super Why!	12:30	Cook's Country	
Sewing Programs M: Fons & Porter's Love of Quilting Tu: Sewing with Nancy W: It's Sew Easy Th: Fit 2 Stitch F: Quilting Arts	1:00	Christopher Kimball's Milk Street Television	
Painting and How To Programs M: American Woodshop Tu: Paint This with Jerry Yarnell W: Beads, Baubles and Jewels Th: Garden Smart F: Ask This Old House	1:30	Martha Bakes	
Nature Cat	2:00	Simply Ming	
Wild Kratts	2:30	Dining with the Chef	
Arthur	3:00	Lidia's Kitchen	
Odd Squad	3:30	Curious Traveler	
Odd Squad	4:00	This Old House Hour	
DW News	4:30		
BBC World News	5:00	PBS NewsHour Weekend	PBS NewsHour Weekend
Nightly Business Report	5:30	Rick Steves' Europe	BBC Newsnight
PBS NewsHour	6:00	Antiques Roadshow	Doc Martin

## WILL Kids 24/7 on 12.2

For the full WILL Kids 24/7 schedule, go to [www.illinois.edu/tv/schedule](http://www.illinois.edu/tv/schedule)



See the full Create & World schedules at [will.illinois.edu/tv/schedule](http://will.illinois.edu/tv/schedule)

# All too human

**Margaret: The Rebel Princess**, an insightful new two-part biography of Princess Margaret, Queen Elizabeth's beautiful and rebellious younger sister, will premiere at 9 pm Sundays, February 10 and 17.

This new special, featuring rare footage and interviews with those who knew her best, offers unparalleled insight into Margaret's turbulent life and times. A complicated and contradictory princess, her story parallels her era when the rules of social norms were being rewritten and a freer, more egalitarian society was emerging.

**Margaret: The Rebel Princess** presents new interviews with several of her closest friends including Lady Anne Glenconner, Lady Jane Rayne and Jane Stevens, and many others. They reveal Margaret as the first truly modern princess — a superstar who introduced a flash of Hollywood glamour into Buckingham Palace and paved the way for Diana, Kate and Meghan.



Photo: Courtesy of Getty/Bettmann/Contributor.com/Beaton

# The unexplored ocean floor

*Sealab* tells the mostly forgotten story of the U.S. Navy's daring program that tested the limits of human endurance, revolutionized the way humans explored the ocean and laid the groundwork for undersea military missions to come. Based in part on the book *SEALAB: America's Forgotten Quest to Live and Work on the Ocean Floor* by Ben Hellwarth, the film premieres on **American Experience** at 8 pm Tuesday, February 5.

An audacious feat of engineering—a pressurized underwater habitat, complete with science labs and living quarters—*Sealab* aimed to prove that humans were capable of spending days or even months at a stretch living and working on the ocean floor. *Sealab* would pioneer was is known as “saturation diving,” which would allow divers to remain undersea—and emerge unscathed—for more extended periods of time.



Photo: Courtesy of the Man in the Sea Museum



Photo: Courtesy of Justin Purefoy © Maramedia

Visit the natural world through the eyes of the Vikings, when nature meets history in a journey showcasing the wildlife of the North Atlantic. Combining blue-chip natural history filmmaking and dramatic recreations, **Nature: Wild Way of the Vikings** at 7 pm Wednesday, February 13 travels from Norway to Newfoundland, just as the seafaring warriors did in 1,000 A.D., to get a glimpse of the Vikings' world in the Americas hundreds of years before Columbus. Experience the deep

history and cultural respect the Vikings had with the land and sea: from the killer whales of the North Sea to the puffins and otters of the Scottish coast to the volcanic mounts of Iceland and the frozen tundra of Greenland.

## The age of the Vikings



Photo: Courtesy of C-line Films

## Black Memorabilia

Traveling from industrial China to the American South to the Bedford-Stuyvesant neighborhood of Brooklyn, Chico Colvard's documentary *Black Memorabilia* takes an intent, close-up look at a category of early-20th-century collectibles sometimes referred to as "black memorabilia"—signs, household goods, figurines, and other unsettling tchotchkes that feature demeaning representations of African Americans. You could call them reminders of America's troubled racial history—except that they continue to be manufactured. **Independent Lens** presents the film at 9 pm Monday, February 4.



Photo: Courtesy of Bing Liu

## What it means to be men

What makes a family? *Minding the Gap* from **POV** gives us an intimate look into friendships initiated via a passion for skateboarding and cemented by shared experience. The resulting bonds are as strong as any between members of a conventional family. This captivating coming-of-age story tackles topics including domestic violence, relationships, and masculinity, all while its three central subjects approach adulthood. Shot in Rockford, Ill., filmmaker Bing Liu (above) tries to understand his own past while exploring the lives of the next generation. *Minding the Gap* at 8 pm Monday, February 18 is a compelling story that is relatable across age, class, and race.





On pledge drive days with this symbol, program start and end times may vary.

## 1 Friday

**7:00 Washington Week**

**7:30 Firing Line with Margaret Hoover**

**8:00 Great Performances at the Met** (TV-PG)  
Marnie. Watch composer Nico Muhly's reimagining of Winston Graham's novel about a beautiful, mysterious woman who assumes multiple identities. *Repeated 2 am 2/3.*

**10:30 Amanpour and Company**

**11:30 BBC World News**

## 2 Saturday

**7:00 Hold The Sunset** (TV-PG)  
Roger The Carer.

**7:30 Still Open All Hours** (TV-PG)

**8:00 Masterpiece Classic** (TV-PG) (DVS)  
*Downton Abbey*. Season 6, part 9 of 9. The finale of the hit series.

**10:00 Red Dwarf** (TV-G)  
Give and Take.

**10:30 Austin City Limits** (TV-PG)  
Buddy Guy/August Greene. Thrill to an hour of blues and hip-hop with Buddy Guy and August Greene.

**11:30 State & Water**

## 3 Sunday

**7:00 Masterpiece Classic** (TV-PG)  
*Victoria*. Season 3, part 3 of 8. Albert relishes family time away from London, but Victoria is desperate to get back to the Palace. *Repeated 1 am 2/5; and 4 am 2/5.*

**8:00 Masterpiece Classic** (TV-PG)  
*Victoria*. Season 3, part 4 of 8. When Albert leaves for Cambridge, Victoria faces the impact of a cholera epidemic in London. *Repeated 2 am 2/5; 2 am 2/9; 7 pm 2/10; 1 am 2/12; and 4 am 2/12.*

**9:00 Tales from the Royal Bedchamber** (TV-PG)  
Lucy Worsley gets into bed with our past monarchs to uncover the Tales from the Royal Bedchamber. *Repeated 3 am 2/5.*

**10:00 Backstage Pass** (TV-PG)  
Karen Lovely. Karen Lovely delivers a strong blues/Americana performance at the outdoor Michigan BluesFest.

**11:00 Bluegrass Underground** (TV-G)  
Turnpike Troubadours.

**11:30 Film-Maker** (TV-14)  
Ronald Baez's *Scenes from our Young Marriage*, where a young couple journeys through seemingly innocuous conversations.

## 4 Monday

**7:00 Antiques Roadshow** (TV-G)  
Ca' D'zan. Part 2 of 3. Head to Ca' d'Zan to discover treasures that are fitting for a celebration of 'The Greatest Show on Earth.' *Repeated 1 am 2/6; 4 am 2/6; 3 am 2/9; 6 pm 2/9, and 12 am 2/11.*

**8:00 Antiques Roadshow** (TV-G)  
*Celebrating Black Americana*. Highlights include an 1821 U.S. citizenship certificate for George Barker, a free man of color; an African-American beauty book written by Madam C.J. Walker, the first American female millionaire; and a trip with host Mark L. Walberg and appraiser Leila Dunbar to the Negro Leagues Baseball Museum in Kansas City, Missouri. *Repeated 2 am 2/6.*

**9:00 Independent Lens** (TV-14) (DVS)  
*Black Memorabilia*. See article on page 11. *Repeated 3 am 2/6.*

**10:00 Hold The Sunset** (TV-PG)  
Roger The Carer.

**10:30 Amanpour and Company**

**11:30 BBC World News**

## 5 Tuesday

**7:00 Finding Your Roots** (TV-PG)  
*Freedom Tales*. Season 5, part 5 of 8. Host Henry Louis Gates, Jr. delves deep into the roots of two African American guests, actor S. Epatha Merkerson and athlete and television personality Michael Strahan. *Repeated 1 am 2/7; 4 am 2/7; and 3 am 2/11.*

**8:00 American Experience** (TV-PG) (DVS)  
*Sealab*. See article on page 10. *Repeated 2 am 2/7.*

**9:00 Frontline**  
*Repeated 3 am 2/7.*

**10:00 Detectorists** (TV-PG)

**10:30 Amanpour and Company**

**11:30 BBC World News**

## 6 Wednesday

**7:00 Nature** (TV-PG) (DVS)  
*Arctic Wolf Pack*. Discover the white wolf, one of the most hardened predators on the planet. *Repeated 1 am 2/8; and 4 am 2/8.*

**8:00 NOVA** (TV-G)  
*Decoding The Pyramids*. How did the ancient Egyptians build the pyramids of Giza with only copper hand tools and none of today's construction and surveying equipment? *Repeated 2 am 2/8; and 12 am 2/10.*

**9:00 Dictator's Playbook** (TV-14)  
Francisco Franco. Part 5 of 6. Learn how Francisco Franco used the tactics of colonial war to win control of Spain. *Repeated 3 am 2/8.*

**10:00 Still Open All Hours** (TV-PG)

**10:30 Amanpour and Company**

**11:30 BBC World News**

## 7 Thursday

- 7:00 Mid-American Gardener (TV-G)**  
*Repeated 11 am 2/9.*
- 7:30 Ask This Old House (TV-G)**  
*Repeated 1:30 pm 2/8.*
- 8:00 Doc Martin (TV-PG)**  
*Accidental Hero.* Season 8, part 6 of 8. Penhale decides to have a police open house to raise community awareness. *Repeated 6 pm 2/10.*
- 9:00 Reel Midwest**  
*Gun Shop.* See article on page 2.
- 10:00 Marley's Ghosts (TV-PG)**
- 10:30 Amanpour and Company**
- 11:30 BBC World News**

## 8 Friday

- 7:00 Washington Week**
- 7:30 Firing Line with Margaret Hoover**
- 8:00 Live from Lincoln Center (TV-PG) (DVS)**  
*Pipeline.* When her son gets in trouble at school, Nya must confront his rage and her choices, and try to reach him before he gets pulled away forever. *Repeated 2 am 2/10.*
- 9:30 Portraits In Architecture (TV-G)**  
Pier Carlo Bontempi is a Parma-based architect who is subtly exploring the vernacular forms of northern Italy.
- 10:00 Upstart Crow (TV-PG)**  
*Love Is Not Love.*
- 10:30 Amanpour and Company**
- 11:30 BBC World News**

## 9 Saturday

- 7:00 Won't You Be My Neighbor? (TV-PG)**  
See article on page 1.
- 9:00 Father Brown (TV-G)**  
*The Crimson Feather.* Season 5, part 8 of 15. Mrs. McCarthy is delighted to have her daughter Joselyn visit.
- 10:00 Red Dwarf (TV-G)**  
*Captain Rimmer.*
- 10:30 Austin City Limits Presents: Americana Music Festival 2011 (TV-PG)**
- 11:30 State & Water**

## 10 Sunday

- 7:00 Masterpiece Classic (TV-PG)**  
**Victoria.** Season 3, part 4 of 8. When Albert leaves for Cambridge, Victoria faces the impact of a cholera epidemic in London. *Repeated 1 am 2/12; and 4 am 2/12.*
- 8:00 Masterpiece Classic (TV-PG)**  
**Victoria.** Season 3, part 5 of 8. The Royals visit Ireland, where intrigue, conflict and romance all blossom during their stay. *Repeated 2 am 2/12; 2 am 2/16; 7 pm 2/17; 1 am 2/19; and 4 am 2/19.*
- 9:00 Margaret: The Rebel Princess (TV-PG)**  
Part 1 of 2. See article on page 10. *Repeated 3 am 2/12.*
- 10:00 Backstage Pass (TV-PG)**  
*Lil' Ed & The Blues Imperials.*
- 11:00 Bluegrass Underground (TV-G)**  
*Mary Gauthier.*
- 11:30 Film-Maker (TV-PG)**  
*Animobiles* from Isaac Bencid, and *The Wrecker Kings* from Robert Colom.

## 11 Monday

- 7:00 Antiques Roadshow (TV-G)**  
*Ca D'zan.* Part 3 of 3. Highlights include a Nakashima table, a Yankees ring and illustrated baseball, and an Elijah Pierce relief-carved plaque. *Repeated 1 am 2/13; 3 am 2/16; 6 pm 2/16; and 12 am 2/18.*
- 8:00 Antiques Roadshow (TV-G)**  
*Miami Beach, Fla.* Part 1 of 3. Highlights include a rare 1960 re-release movie poster for *The Wild One*, a George Ohr vase with a surprising secret, and a 1940s mobile by Alexander Calder. *Repeated 2 am 2/13.*
- 9:00 Independent Lens (TV-14) (DVS)**  
*Hale County This Morning, This Evening.* Composed of intimate and unencumbered moments in the lives of people in the community, the film offers a richly detailed glimpse at life in America's Black Belt. *Repeated 3 am 2/13.*
- 10:30 Amanpour and Company**
- 11:30 BBC World News**

## 12 Tuesday

- 7:00 Finding Your Roots (TV-PG)**  
*Roots In Politics.* Season 5, part 6 of 8. Host Henry Louis Gates, Jr. explores the diverse family histories of politicians Paul Ryan, Tulsi Gabbard, and Marco Rubio. *Repeated 1 am 2/14; 4 am 2/14; and 3 am 2/18.*
- 8:00 Lincoln: Prelude to the Presidency (TV-G) (DVS)**  
To commemorate Abraham Lincoln's 200th birthday in 2009, this documentary immerses viewers in a critical, but often overlooked, time in the statesman's life.
- 9:30 Frontline**  
*Repeated 3 am 2/14.*
- 10:30 Amanpour and Company**
- 11:30 BBC World News**

## 13 Wednesday

- 7:00 Nature (TV-PG)**  
*Wild Way of the Vikings.* See article on page 11. *Repeated 1 am 2/15; and 4 am 2/15.*
- 8:00 NOVA (TV-PG)**  
*Rise of the Rockets.* An explosion of private companies are developing new technologies and lowering costs to bring space closer than ever. *Repeated 2 am 2/15; and 12 am 2/17.*
- 9:00 Dictator's Playbook (TV-14)**  
*Idi Amin.* Part 6 of 6. See how Idi Amin used lessons learned in the colonial British Army to build a powerful dictatorship in Uganda. *Repeated 3 am 2/15.*
- 10:00 Still Open All Hours (TV-PG)**
- 10:30 Amanpour and Company**
- 11:30 BBC World News**

## 14 Thursday

- 7:00 Mid-American Gardener** (TV-G)  
*Repeated 11 am 2/16.*
- 7:30 Ask This Old House** (TV-G)  
*Repeated 1:30 pm 2/15.*
- 8:00 Doc Martin** (TV-PG)  
*Blade on the Feather.* Season 8, part 7 of 8. Penhale and Morwenna participate in the annual gig race against another town. Louisa buys a new car, and Martin's blood phobia causes a disaster with a patient. *Repeated 6 pm 2/17.*
- 9:00 Reel Midwest**  
*On Beauty.* See article on page 2.
- 9:31 Portraits In Architecture** (TV-G)  
David M. Schwarz has a busy office in Washington, D.C. that designs sports facilities, concert halls and shopping centers around the country. But his most significant work was revitalizing the downtown of Ft. Worth, Texas. *Repeated 2:30 pm 2/24.*
- 10:00 Marley's Ghosts** (TV-PG)
- 10:30 Amanpour and Company**
- 11:30 BBC World News**

## 15 Friday

- 7:00 Washington Week**
- 7:30 Firing Line with Margaret Hoover**
- 8:00 Great Performances** (TV-PG)  
*Movies for Grownups Awards 2019 with AARP The Magazine.* See article on page 2. *Repeated 2 am 2/17.*
- 10:00 Upstart Crow** (TV-PG)  
*What Bloody Man Is That?*
- 10:30 Amanpour and Company**
- 11:30 BBC World News**

## 16 Saturday

- 7:00 Hold The Sunset** (TV-PG)  
*Old Flames.*
- 7:30 Still Open All Hours** (TV-PG)
- 8:00 Masterpiece Classic** (TV-PG)  
*Downton Abbey.* Season 1, part 1 of 7. Experience the lives of the noble Crawley family and the staff who serve them, set at their Edwardian country house in 1912.
- 9:30 Upstart Crow** (TV-PG)  
*What Bloody Man Is That?*
- 10:00 Red Dwarf** (TV-G)  
*Krysis.*
- 10:30 Austin City Limits** (TV-PG)  
*Ed Sheeran.* Relish an hour with best-selling pop sensation Ed Sheeran.
- 11:30 State & Water**

## 17 Sunday

- 7:00 Masterpiece Classic** (TV-PG)  
*Victoria.* Season 3, part 5 of 8. The Royals visit Ireland, where intrigue, conflict and romance all blossom during their stay. *Repeated 1 am 2/19; and 4 am 2/19.*
- 8:00 Masterpiece Classic** (TV-PG)  
*Victoria.* Season 3, part 6 of 8. A ball could not come at a worse time as private Royal family pictures are made public. *Repeated 2 am 2/19; 2 am 2/23; 7 pm 2/24; 1 am 2/26; and 4 am 2/26.*
- 9:00 Margaret: The Rebel Princess** (TV-14)  
Part 2 of 2. See article on page 10. *Repeated 3 am 2/19.*
- 10:00 Backstage Pass** (TV-PG)  
*Sister of Your Sunshine Vapor.* Based in Detroit, this guitar, bass, and drums trio revives the psychedelic rock of the 60s.
- 11:00 Bluegrass Underground** (TV-G)  
*Flatt Lonesome.*
- 11:30 Film-Maker** (TV-PG)  
*Fur Elise* by David Jura. While attempting to hide an affair with a woman from her husband, Marie finds herself inexplicably in a psych ward.

## 18 Monday

- 7:00 Antiques Roadshow** (TV-G)  
*Hotel Del Coronado.* Part 1 of 3. Check in to Hotel del Coronado to see sensational finds at a stunning seaside setting. *Repeated 1 am 2/20; 4 am 2/20; 3 am 2/23; 6 pm 2/23; and 12 am 2/25.*
- 8:00 POV** (TV-PG)  
*Minding The Gap.* See article on page 11. *Repeated 2 am 2/20.*
- 9:30 Breaking Big** (TV-PG)  
*Lee Daniels.* Part 9 of 12. Trace Lee Daniels' path from West Philly to his the red-hot center of Hollywood. *Repeated 3:30 am 2/20.*
- 10:00 Hold The Sunset** (TV-PG)  
*Old Flames.*
- 10:30 Amanpour and Company**
- 11:30 BBC World News**

## 19 Tuesday

- 7:00 Finding Your Roots** (TV-PG)  
*No Laughing Matter.* Season 5, part 7 of 8. Henry Louis Gates, Jr. shows comedians Seth Meyers, Tig Notaro, and Sarah Silverman that their family trees are filled with people whose struggles laid the groundwork for their success. *Repeated 1 am 2/21; 4 am 2/21; and 3 am 2/25.*
- 8:00 American Masters** (TV-PG) (DVS)  
*Sammy Davis, Jr.: I've Gotta Be Me.* ESee article on page 2. *Repeated 2 am 2/21.*
- 10:00 Detectorists** (TV-PG)  
Even though Andy, Lance, Becky and Sophie are barely talking to each other, their secrets are on the verge of being revealed.
- 10:30 Amanpour and Company**
- 11:30 BBC World News**



## 20 Wednesday

- 7:00 Nature** (TV-PG)  
*Living Volcanoes.* Uncover the variety of activity that occurs on the slopes of active volcanoes. *Repeated 1 am 2/22; and 4 am 2/22.*
- 8:00 NOVA** (TV-PG)  
*Pompeii.* Could a massive volcanic eruption devastate a major Italian city? The eruption of Mount Vesuvius is the ancient world's most celebrated and haunting catastrophe. *Repeated 2 am 2/22; and 12 am 2/24.*
- 9:00 Secrets of the Dead** (TV-PG)  
*The Nero Files.* Take a closer look at the life and legend of Nero, the infamous Roman emperor. *Repeated 3 am 2/22.*
- 10:00 Illinois Lawmakers**
- 11:00 Amanpour and Company**

## 21 Thursday

- 7:00 Mid-American Gardener** (TV-G)  
*Repeated 11 am 2/23.*
- 7:30 Ask This Old House** (TV-G)  
*Repeated 1:30 pm 2/22.*
- 8:00 Doc Martin** (TV-PG)  
*All My Trials.* Season 8, part 8 of 8. Martin stops practicing the week before his hearing, but patients continue to solicit his advice. *Repeated 6 pm 2/24.*
- 9:00 Reel Midwest**  
*In The Game.* See article on page 2.
- 10:30 Amanpour and Company**
- 11:30 BBC World News**

## 22 Friday

- 7:00 Washington Week**
- 7:30 Firing Line with Margaret Hoover**
- 8:00 American Masters** (TV-PG)  
*Charley Pride.* See article on page 2. *Repeated 2 am 2/24.*
- 9:00 Landmarks Live In Concert: A Great Performances Special** (TV-PG)  
*Brad Paisley.* Country music superstar Brad Paisley returns to his roots in the beautiful Appalachian Mountains for a special outdoor concert at West Virginia University. *Repeated 3 am 2/24.*
- 10:00 Upstart Crow** (TV-PG)  
*The Quality of Mercy.*
- 10:30 Amanpour and Company**
- 11:30 BBC World News**

## 23 Saturday

- 7:00 Hold The Sunset** (TV-PG)  
*Bubbly.*
- 7:30 Still Open All Hours** (TV-PG)
- 8:00 Masterpiece Classic** (TV-PG)  
*Downton Abbey.* Season 1, part 2 of 7. Mary entertains three suitors, including a Turkish diplomat whose boldness leads to a surprising event. Downstairs, the shocking former life of Carson, the butler, is unmasked.
- 9:30 Upstart Crow** (TV-PG)  
*The Quality of Mercy.*
- 10:00 Red Dwarf** (TV-G)  
*Can of Worms.*
- 10:30 Austin City Limits** (TV-PG)  
*Robert Plant & The Sensational Space Shifters.* Enjoy new classics and fan favorites from music icon Robert Plant.
- 11:30 State & Water**

## 24 Sunday

- 7:00 Masterpiece Classic** (TV-PG)  
*Victoria.* Season 3, part 6 of 8. A ball could not come at a worse time as private Royal family pictures are made public. *Repeated 1 am 2/26; and 4 am 2/26.*
- 8:00 Masterpiece Classic** (TV-PG)  
*Victoria.* Season 3, part 7 of 8. Albert and Palmerston put their reputations on the line, and Victoria must fight against her better judgement to decide where to place her allegiance. *Repeated 9 pm 2/24; 2 am 2/26; 3 am 2/26; and 2 am 3/2.*
- 9:00 Masterpiece Classic** (TV-PG)  
*Victoria.* Season 3, part 7 of 8. Albert and Palmerston put their reputations on the line, and Victoria must fight against her better judgement to decide where to place her allegiance. *Repeated 2 am 2/26; 3 am 2/26; and 2 am 3/2.*
- 10:00 Backstage Pass** (TV-PG)  
*Jesse Ray & The Carolina Catfish.* With their blend of rock 'n' roll, blues, and punk, this duo continues to rock stages across the Midwest.
- 11:00 Bluegrass Underground** (TV-G)  
*Brandi Carlile.*
- 11:30 Film-Maker** (TV-G)  
*Alonso Aliaguilla's Reissued: A Rebirth of Vinyl; Full Circle* from Raymond Knudsen; and *Speechless* from Devin Marsh

## 25 Monday

### 7:00 Antiques Roadshow (TV-G)

*Hotel Del Coronado.* Part 2 of 3. Discover covetable California items appraised at Hotel del Coronado like a 1915 San Diego Exposition poster, a Joan Crawford archive from around 1940 and a Margaret Bourke-White photograph of Gandhi. *Repeated 1 am 2/27; and 3 am 3/2.*

### 8:00 Antiques Roadshow (TV-G)

*Miami Beach, Fla.* Part 2 of 3. Highlights include an archive of correspondence and photos marking the friendship between a cigar-loving Winston Churchill and the guest's Cuban great aunt and uncle; a stunning 1908 example of New Orleans' Newcomb College pottery; and an heirloom collection of vintage diamond rings and a necklace. *Repeated 2 am 2/27.*

### 9:00 Independent Lens (TV-14) (DVS)

*People's Republic of Desire.* Meet a generation of young people in China who have come of age online, where virtual relationships are replacing real-life connections. *Repeated 3 am 2/27.*

### 10:30 Amanpour and Company

### 11:30 BBC World News

## 26 Tuesday

### 7:00 Finding Your Roots (TV-PG)

*Hard Times.* Season 5, part 8 of 8. Host Henry Louis Gates, Jr. explores the family stories of filmmaker Michael Moore and actors Laura Linney and Chloe Sevigny. *Repeated 1 am 2/28; and 4 am 2/28.*

### 8:00 American Experience (TV-PG)

*Roads to Memphis.* This film tells the wildly disparate yet fatefully entwined stories of an assassin, James Earl Ray, and his target, Dr. Martin Luther King, Jr., against the backdrop of the seething and turbulent forces in American society. *Repeated 2 am 2/28.*

### 9:00 Frontline

*Repeated 3 am 2/28.*

### 10:00 Detectorists (TV-PG)

A huge hole has been excavated and police are looking into it. Furthermore, Larry Bishop's invisible dogs have disappeared without a trace.

### 10:30 Amanpour and Company

### 11:30 BBC World News

## 27 Wednesday

### 7:00 Nature (TV-G) (DVS)

*Yosemite.* Join scientists, experts, and adventurers as they trudge through mountains of snow, climb trees as tall as buildings, and soar high in the air to spy just how these global changes are affecting one of America's greatest wildernesses. *Repeated 1 am 3/1; and 4 am 3/1.*

### 8:00 NOVA (TV-PG)

*Great Human Odyssey.* Walk in the footsteps of our ancient ancestors as scientists trace the paths that led us out of Africa and around the world. From snowy Siberia to remote Pacific islands, discover how humans survived and thrived in every corner of the planet. *Repeated 2 am 3/1.*

### 10:00 Still Open All Hours (TV-PG)

### 10:30 Amanpour and Company

### 11:30 BBC World News

## 28 Thursday

### 7:00 Mid-American Gardener (TV-G)

*Repeated 11 am 3/2.*

### 7:30 Ask This Old House (TV-G)

*Repeated 1:30 pm 3/1.*

### 8:00 Doc Martin (TV-PG)

*Mysterious Ways.* Season 8, part 1 of 8. After successfully rekindling their relationship, Louisa and Martin are living together again.

### 9:00 Reel Midwest

*The Way to Andina.* See article on page 2.

### 10:30 Amanpour and Company

### 11:30 BBC World News



ILLINOIS STATE  
BAR ASSOCIATION™

ILLINOIS LAWYER FINDER™

### Need legal help?

Search our online directory for lawyers in your area who practice in the field of law you need.

WWW.ILLINOISLAWYERFINDER.COM



# Uni High students tackle affirmative action and inclusion in newest radio documentary

University High School, in collaboration with WILL, presents **Beyond Opening the Gates**, a radio documentary that explores how affirmative action and inclusion became part of higher education. The program airs at 11 am Friday, February 22 on WILL-AM 580.

Every year, Uni High's oral history team begins the two-year process of creating a radio documentary from scratch. Kathryn Dullerud, producer for **Beyond Opening the Gates**, said, "There are a lot of misconceptions about what affirmative action is. This particular topic especially interested me just because college is such a pressing topic as a high school student, and affirmative action gets talked about a lot in the context of the college admissions process. Being able to learn about it more in-depth was especially eye-opening as

I was going through the process of choosing a college myself."

The students also learned about evidence-based reporting. "Speaking to professionals in the field is a lot different than talking to non-experts about the subject. The experts have a lot more evidence to back up what they're arguing, whereas I feel like many debates on the topic are based on emotions," said Dullerud.

"The work the students create for WILL increases our commitment to the telling of local history and how that history connects to what's happening in the country today," said Kimberlie Kranich, director of engagement and educational outreach. "We are grateful for the partnership."

## « COMING AND GOING THIS MONTH TO »



## WILL | Passport



### FEBRUARY HIGHLIGHTS

#### Jamestown

- Season 2

#### Masterpiece Classic's Victoria

- Season 3 episodes added each week

#### Finding Your Roots

- Season 5 episodes added each week

#### Great Performances

- An American in Paris

#### Nature

- Super Cats, parts 1-3

### LEAVING THIS MONTH

#### American Experience

- The Perfect Crime

#### American Masters

- BB King
- August Wilson

#### Antiques Roadshow

- Bismarck, N.D., parts 1 and 2

#### Austin City Limits

- Father John Misty
- Gary Clark, Jr.
- Alabama Shakes

#### Nature

- Owl Power

#### NOVA

- Ice Age Death Trap
- Rise of the Robots
- Memory Hackers

# 2018 Illinois Public Media Member Benefits Survey Results

Thanks to everyone who took the time to provide feedback in our recent member survey! 1278 donors responded, which is just above 10% of our total number of donors. This was very similar to the number of respondents we had to our 2015 Member Survey.

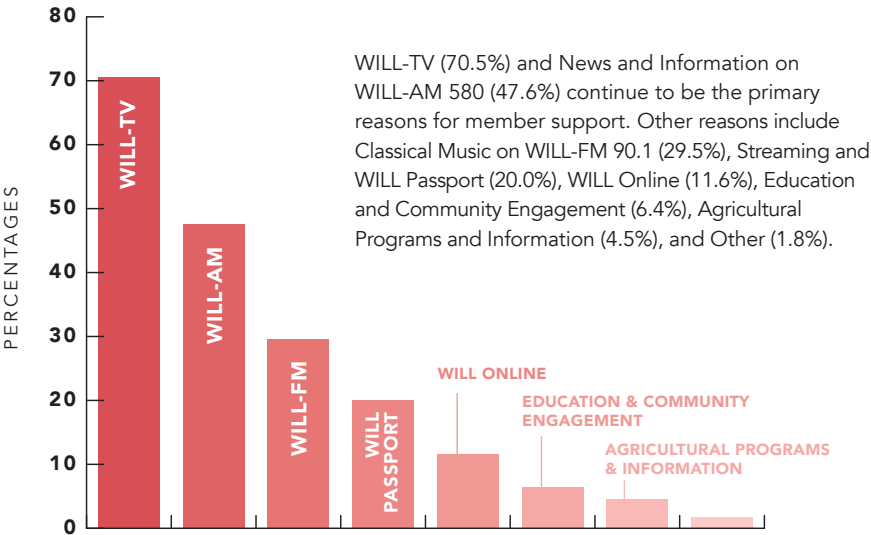
In addition to answering the questions we asked, you shared a lot of very helpful

comments. Many donors remain enthusiastic about *Patterns*, stating that they rely on the print version. For Passport, the most common comment was about difficulty setting it up/using it. Those who use it seem to enjoy it once everything is set up correctly. If you provided specific comments about programming or technical issues, those comments were forwarded to the appropriate department.

## KEY TAKEAWAYS:

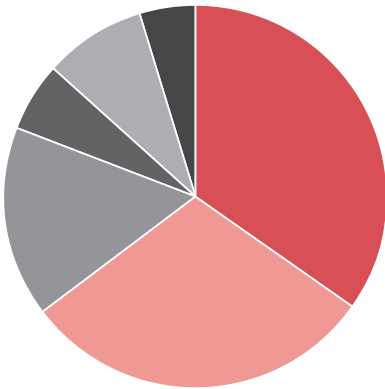
- *Patterns* continues to be a very popular and worthwhile investment by the majority of members. Many donors have indicated that they would choose to receive *Patterns* digitally. Beginning in March, donors that opt out of the print version will receive a digital copy via email.
- Donors would like an easier way to opt out of receiving a print copy of *Patterns* and/or the MemberCard, and we listened! Go to [will.illinois.edu/optout](http://will.illinois.edu/optout) to specify your member benefits. When you do this, more of your donation will go directly to programming. We will continue to provide this information to current and new members.
- While Passport uptake has been great, our donors would like us to do more outreach and education efforts. As PBS continues to tweak and improve the platform, we will redouble our efforts to activate more donors and provide sufficient information/help. In 2019, we will start a series of technical assistance events where we can help you set up Passport, plus we will provide tips on how to better receive WILL TV and radio over the air in your house or car.

## PRIMARY REASON(S) FOR FINANCIAL SUPPORT:





## How do you regard *Patterns* as a benefit?



- Very important (34.8%)
- Somewhat important (29.8%)
- Neutral about it (16.1%)
- Somewhat unimportant (5.8%)
- Very unimportant (8.6%)
- No response (4.6%)

**RESULT:**  
**64.6%** of responding members consider *Patterns* to be a important benefit.

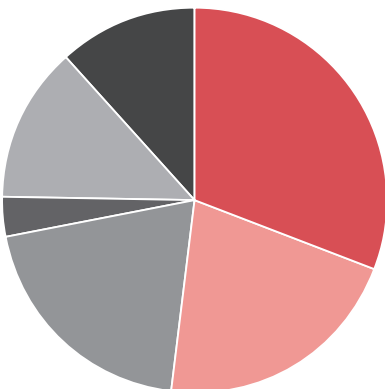
## Have you ever watched PBS or WILL via streaming?



- Yes (49.6%)
- No (43.6%)
- No response (6.7%)

**RESULT:**  
**Almost 50%** of respondents have streamed content from PBS or WILL. This is an increase from 29% in 2015, which was before Passport launched. The majority of donors use PBS and WILL (online or app) to stream our content.

## How do you regard WILL Passport as a member benefit?



- Very important (30.8%)
- Somewhat important (21.2%)
- Neutral about it (19.9%)
- Somewhat unimportant (3.4%)
- Very unimportant (12.9%)
- No response (11.5%)

**RESULT:**  
A fairly recent addition, WILL Passport is already cited by more than **50% of our donors** as an important member benefit.

# A time to celebrate

In 1974, a group of WILL volunteers approached the station's newly appointed General Manager Don Mullally. The volunteers and Mullally were interested in moving the WILL radio and television stations forward with contributed gifts from listeners and viewers. And so, the Friends of WILL were established. On-air fund drives were established later that year, and *Patterns* magazine was published soon thereafter as a member benefit for contributing Friends.

In the 45 years since, WILL's Friends contributed time and effort to our events including Concert in the Park, the WILL Auction, Champaign-Urbana's 4th of July Parade, on-air fund drives, and many more. And, of course, Friends have contributed millions of dollars each year to maintain the service of the WILL radio and television stations.

Throughout our celebratory year, expect to see a few special events, vintage photos, and *Patterns* articles meant to celebrate—and thank you—for your contributions that have made WILL a force for good throughout central Illinois.



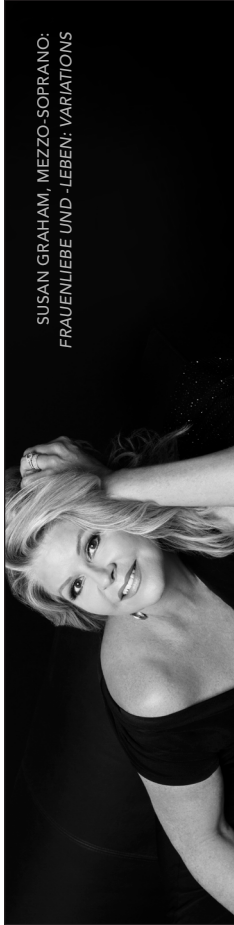
## SPECIAL THANKS TO OUR VICTORIA SEASON 3 SPONSORS



# Thank you, Program Underwriters!

Private support accounts for the largest single source of funds necessary to make Illinois Public Media and the WILL stations great resources for communities across central Illinois. We appreciate the following organizations that have stepped forward to join the individuals and families who support award-winning public media services.

A-A-A Storage	Dancing Dog	Riggs Beer Company
Aging in Place	Danville Gardens, Inc.	Risk Management Commodities, Inc
AgrAbility	Danville Light Opera	Sangamon Auditorium, UIS
Agribble-Morning Farm Report	Danville Symphony Orchestra	Sew Sassy
AgriGold	DTN/The Progressive Farmer	Silvercreek/Courier Cafe
Allerton Park Conference Center	Einstein Bros. Bagels	Sinfonia da Camera
Amasong	Emmanuel Memorial Episcopal Church	Sock Club Enterprises LLC
Archer Daniels Midland Company	Farm Credit Services of Illinois	St. Joseph Apothecary
The Art Theatre	Farmer City Antique Show	St. John the Divine Episcopal Church
Asahel Gridley Antique Shop	First Federal Savings Bank of Champaign-Urbana	Standard Grain, Inc.
Associated Antique Dealers of America	Global Commodity Analytics & Consulting LLC	Stewart-Peterson Group Inc.
Auditory Care Center	Greenview	Strategic Farm Marketing Inc.
Baroque Artists of Champaign-Urbana	Hendrick House	Subaru of Champaign
Bates Commodities	Illini Union Ballroom	Sweeney Brothers Fine Floorcovering
Beckman Institute	Illinois AgriNews	Symphony Orchestra Guild of Decatur
Beef House	Illinois Arts Council	Syngenta Crop Protection
Big Grove Tavern	Illinois Beef Association	Techline
Birch Tree Counseling & Consulting LLC	Illinois Corn Growers Association	Ten Thousand Villages
Blue Moon Farm	Illinois Pork Producers Association	The Andersons, Inc.
Busey	Illinois Program for Research in the Humanites	The Mervis Family Foundation
C-U Overhead Doors, Inc	Illinois Shakespeare Festival	The Organization for Transformative Works
Center for Advanced Study	Illinois Symphony Orchestra	TIAA Center for Farmland Research
Central Illinois Antique Dealers Association	Illinois Times	Todd's Wines at Art Mart
Central Illinois Regional Airport	Institute for Sustainability, Energy, Environment (ISEE)	TrophyTime
Champaign Park District/Virginia Theatre	John Phipps Law Offices PC	U of I Coordinated Science Lab
Champaign-Urbana Mass Transit District	Koester & Bradley, LLP	U of I Department of Electrical and Computer Engineering
Champaign-Urbana Public Health District	Krannert Art Museum	U of I Department of Engineering
Champaign-Urbana Symphony	Krannert Center for the Performing Arts	U of I Department of Physics
Cheese & Crackers	The Land Connection	U of I Extension
Chorale	Leek & Sons Funeral Home	U of I Mens' Glee Club
City of Champaign Community Relations	Levy Company	U of I Office of the Vice Chancellor for Research
City of Urbana	Little Theatre on the Square	U of I Press
Clark-Lindsey Village	Makerspace	U of I School of Social Work
Cline Center for Advanced Social Research	Meredith Foundation	U of I System
College of Media Ebertfest	Meyer Capel Law Office	University High School
Columbia Street Roastery	Mike Weaver Ballroom Dance	University YMCA
Comcast	Monticello Railway Museum	Urbana's Market in the Square
Common Ground Food Co-op	National Shows 2	USDA - Farm Service Agency
Community Foundation of East Central Illinois	Natural Gourmet	Vermilion Voles
Community Shares of Illinois	Parkland College	Weiskamp Screen Printing
Concierge Magazine	Pars Rug Gallery	Wesley United Methodist Church and Student Foundation
CU Folk and Roots Festival	Patterson Office Supplies	Willard Airport
	Prairie Farmer Magazine	Windsor of Savoy
	Prairie Rivers Network	World Harvest Foods
	Preservation Emporium	
	Rental City	



SUSAN GRAHAM, MEZZO-SOPRANO:  
FRAUENLIEBE UND -LEBEN: VARIATIONS

FEBRUARY

1-28	Krannert Center Tours	16	Free Family Fun Concert: Jazzy Ash and the Leaping Lizards
1-10	Illinois Theatre: <i>Hit the Wall</i>	16	Sonic Illinois: Eighth Blackbird and Third Coast Percussion: Steve Reich's <i>Music for 18 Musicians</i>
2	Susan Graham, mezzo-soprano: <i>Frauenliebe und -leben: Variations</i>	21	Krannert Uncorked
7-9	February Dance: Dancing 50: Moving Forward/Looking Back	21-24	Sonic Illinois: Lyric Theatre: <i>The Rape of Lucretia</i>
7	Krannert Uncorked	23-24	Dessert and Conversation: Sonic Illinois: Lyric Theatre: <i>The Rape of Lucretia</i>
7	Sonic Illinois: Jupiter String Quartet with Chungliang Al Huang, Tai Ji master	27	Sonic Illinois: A Thousand Thoughts—A Live Documentary with Kronos Quartet
8	Dessert and Conversation: February Dance	28	Krannert Uncorked
10	Young Concert Artists Winner: Hanzhi Wang, accordion	28	Studiospace I: Dancing 50: Moving Forward/Looking Back
14	Krannert Uncorked	28	Illinois Theatre: <i>The Curious Incident of the Dog in the Night-Time</i>
15	Dance for People with Parkinson's		
15	Sinfonia Da Camera: Lynn Harrell Plays Elgar		



KRANNERT CENTER | 50

217.333.6280 • KRANNERTCENTER.COM

**ILLINOIS**  
College of Fine & Applied Arts

**MOVING?** Let your public broadcasting membership move with you.

Fill out the form below and send it with your address label to:  
**Friends of WILL, 300 North Goodwin Avenue, Urbana, IL 61801-2316**

Let us know six weeks in advance of moving    Go to [will.illinois.edu/optout](http://will.illinois.edu/optout) to go so that we can make the proper change.    green & receive Patterns digitally.

- ☐ Check here if you wish to remove your name from our membership list.  
☐ Please update my membership with this new address:

Name \_\_\_\_\_  
Street \_\_\_\_\_  
City \_\_\_\_\_ State \_\_\_\_\_ Zip \_\_\_\_\_  
Phone day (    ) \_\_\_\_\_ evening (    ) \_\_\_\_\_

**Friends of WILL**  
**Campbell Hall**  
**300 North Goodwin Avenue**  
**Urbana, IL 61801-2316**

NONPROFIT  
ORGANIZATION  
U.S. POSTAGE PAID  
CHAMPAIGN, IL  
PERMIT NO. 453