

FRIENDS OF WILL MEMBERSHIP MAGAZINE

npr



# patterns

february 2018

A black and white portrait of a woman, Winnie, wearing a striped headscarf and a dark jacket. She is looking slightly to the left with a serious expression. The background is blurred.

# WINNIE

BY INDEPENDENT LENS  
9 PM MONDAY, FEBRUARY 5



Illinois Public Media™

WILL radio.tv.online

**Membership Hotline: 800-898-1065**

**WILL AM-FM-TV: 217-333-7300**

Campbell Hall

300 N. Goodwin Ave., Urbana, IL 61801-2316

### Mailing List Exchange

Donor records are proprietary and confidential.

WILL does not sell, rent or trade its donor lists.

### Patterns

**Friends of WILL Membership Magazine**

Editor/Art Designer: Sarah Whittington

Printed by Premier Print Group.



Printed with SOY INK  
on RECYCLED,  
RECYCLABLE paper.

### Radio

**90.9 FM:** A mix of classical music and NPR

information programs, including local news. (Also

heard at 106.5 in Danville and with live streaming on

will.illinois.edu.) See pages 4-5.

**101.1 FM and 90.9 FM HD2:** Locally produced music programs and classical music from C24. (101.1 is available in the Champaign-Urbana area.) See page 6.

**580 AM:** News and information, NPR, BBC, news, agriculture, talk shows. (Also heard on 90.9 FM HD3 with live streaming on will.illinois.edu.) See page 7.

### Television

#### WILL Create

Cooking, travel, gardening and home improvement, arts and crafts. 12.3; also available on Comcast and Mediacom. See page 8.

#### WILL World

PBS documentaries, news and public affairs. 12.3; also available on Comcast and Mediacom. See page 8.

#### WILL Kids 24/7

Around the clock, award-winning children's programming. 12.2; also available on Comcast and Mediacom.

#### WILL-HD

All your favorite PBS and local programming, in high definition when available. 12.1; Contact your cable or satellite provider for channel information. See pages 9-16.

### Online

will.illinois.edu



facebook.com/WILLradiotvonline



@willpublicmedia



@willpublicmedia

### Get WILL eNews

Video previews, behind-the-scenes information, program schedule updates and more, delivered every Wednesday to your email inbox.

go.illinois.edu/WILLsubscribe

# patterns

february 2018 Volume XLV, Number 8



I'm so excited for the new projects on the horizon at Illinois Public Media. Many recent staff hires have brought new faces and fresh talent to the building, while current employees take on new roles as their skills develop. Throughout the coming months, you'll continue to meet these new co-workers and learn just what makes them special.

We also have equipment upgrades in the works. Some came as a surprise, as you will find on page 18! Others are in development right now, with more information coming soon. Stay tuned!

And finally, we have more of what we do best: telling the stories of our community. Page 17 gives a preview of our new spin on our web series **ART/BTS**, currently in production. Our new Illinois Newsroom and our locally-produced radio show **The 21st** are continuing to provide features from across the state, while our WILL Newsroom keeps you updated on all things central Illinois.

It may be cold and dreary outside, but things are definitely heating up at Illinois Public Media!

Moss Bresnahan,  
President and CEO

Twitter: @MossILMedia



# South African Freedom Fighter

Winnie Madikizela-Mandela is one of the most misunderstood and intriguing of contemporary female political figures. Her rise and seeming fall from grace bear the hallmarks of epic tragedy. For the first time on screen, Winnie explores her life and contribution to the struggle to bring down apartheid from the inside, with intimate insight from Winnie herself, those who were closest to her, and the enemies who sought to extinguish her radical capacity to shake up the order of things. *Winnie* premieres on **Independent Lens** at 9 pm Monday, February 5.

While her husband Nelson Mandela was jailed for 27 years, Winnie lived a tumultuous life. She came to symbolize the oppression of her people, and during the long years in which the African National Congress (ANC) languished in exile and incarceration, her fearlessness incited them to get organized.

During the long struggle, Winnie remained her husband's eyes and ears on the ground, his closest advisor. But her insistent and often militant stance did not sit well with the powers that be. She became the target of a government-sponsored smear campaign, her inner circle was infiltrated with spies, and she was eventually betrayed by many of those she most trusted.

"I made three films in South Africa and interviewed Nelson Mandela for two of them, but I was always intrigued by Winnie, and felt a little unsettled by the adulation that was poured on her husband,



Photo: Courtesy of Paul Weinberg/  
South Photos/Africa Media Online



Photo: Courtesy of Pumpenickel Films

while she was cast as the fallen woman," says filmmaker Pascale Lamche. "Her reputation among people I encountered in Europe and the States was unshakably negative and yet in South Africa, Winnie was loved and respected. I became more and more fascinated by the wide chasm between the two images. Something was amiss. A story needed telling."

Lois Vossen, **Independent Lens** executive producer, said "The decades-long impact of Winnie Mandela is often overlooked. Highly provocative and unapologetic, her personal story, like that of many leaders, is flawed. Although deeply controversial throughout her life, the former wife of Africa's first Black president is seen by many in her country as the mother of the anti-apartheid movement, and Winnie is proof that women cannot be written out of history."



Photo: Courtesy of  
Adil Bradlow/Africa  
Media Online

# February is Black History Month

## N.Y. State of Mind



Photo: Courtesy of Mass Appeal

Two decades after the album's critically-acclaimed release, hip-hop artist Nas teamed up with the National Symphony Orchestra at the Kennedy Center in Washington, DC, to stage a symphonic rendition of *Illmatic*, one of the most revered albums in hip-hop history. The new concert film **Great Performances—Nas Live From the Kennedy Center: Classical Hip-Hop** captures the energy and nostalgia of this collaborative performance and premieres at 8 pm Friday, February 2.

Released in 1994, *Illmatic* is the seminal debut album from Nas, and has long been considered one of the greatest hip-hop records of all time. The album is a densely

textured, deeply lyrical portrait of life in the largest public housing project in North America, the Queensbridge Houses, located in the Long Island City area of New York City, home to nearly 7,000 people.

"It's crazy, you know, I wrote this in the projects in New York City. Here we are in the capitol of America, Washington, DC, and, you know, a bunch of white people with strings and all that, playing this album, and they [sic] feeling it," says Nas in exclusive behind-the-scenes footage captured during on-stage rehearsal before the concert.

Photo: Courtesy of VANISH films





# The history of black education in America

The rich history of America's Historically Black Colleges and Universities (HBCUs) began before the end of slavery, flourished in the 20th century and profoundly influenced the course of the nation for more than 150 years—yet remains largely unknown. With *Tell Them We Are Rising: The Story of Black Colleges and Universities*, the latest documentary from Stanley Nelson, America's foremost film chronicler of the African-American experience, the powerful story of the rise, influence and evolution of HBCUs comes to life. *Tell Them We Are Rising*, co-directed and co-produced by Marco Williams, premieres on **Independent Lens** at 8 pm Monday, February 19.

A haven for black intellectuals, artists and revolutionaries—and a path of promise toward the American Dream—HBCUs have educated the architects of freedom movements and cultivated leaders in every field while remaining unapologetically black for more than 150 years. These institutions have nurtured some of the most influential Americans of our time, from Booker T. Washington to Martin Luther King, Jr., W.E.B. Du Bois to Ralph Ellison, Toni Morrison to Oprah Winfrey, Alice Walker to Spike Lee to Common.

A key driver of black social, political and economic progress, HBCUs were also a place of unprecedented freedom for Afri-

Photo: Courtesy of Atlanta University Center



Photo: Courtesy of Morgan State University



can-American students and a refuge from the rampant racism that raged outside the campus walls. Created following the era when it was a crime in many states to teach African Americans to read, HBCUs sprang up following the end of the Civil War, particularly in the rural south. On these campuses were waged the intellectual battles that would determine the future of African-American society, starting with the ideological difference between Booker T. Washington's emphasis on technical trades and W.E.B. Du Bois' more progressive vision of HBCUs as not just institutions for turning out labor for white businesses, but places of intellectual rigor and societal transformation.

## "We need more **Mayberry** and less **Fallujah**"

The son of a SWAT team member in Detroit, Craig Atkinson thought he knew what he was getting into when he started a new documentary project on American policing. But after three years of filming, what he discovered was an unprecedented lurch toward militarization for local police forces since 9/11.

With his award-winning debut documentary *Do Not Resist*, Craig Atkinson gives viewers a boots-on-the-ground look at American policing, bringing in perspectives from

criminal justice reformers, policymakers and law enforcement leaders in this comprehensive look at a chilling new trend.

*Do Not Resist* opens with riveting footage of protesters in Ferguson, Missouri, facing tear gas and cops wearing riot gear and riding in imposing military vehicles. Other engrossing moments in the film include now-familiar faces.

This **POV** film premieres at 9 pm Monday, February 12.

## weekdays

### 6 am

#### NPR Morning Edition

with Steve Inskeep, Rachel Martin, and David Greene

### 9 am

#### Classic Mornings with Vic Di Geronimo

Join Vic for music and companionship and make each morning a classic morning!

### Noon

#### Afternoon Classics

NPR News Headlines at 3:01.

### 5 pm

#### NPR All Things Considered

with Audie Cornish, Kelly McEvers, and Ari Shapiro

### 7 pm

#### The Evening Concert

Great performances from the great concert venues. Also on Sundays from 7-9 pm. Listings are subject to change.

#### Monday:

##### The New York Philharmonic This Week

- 2/5 **Jeffrey Kahane and Mozart**  
Mozart: Keyboard Concerto, K.238  
Mozart: Piano Concerto in C minor, K.491  
Mozart: Piano Concerto in C major, K.503
- 2/12 **Christopher Eschenbach Conducts Berg, Brahms, and Pintscher**  
Matthias Pintscher (b. 1971): towards Osiris: Study for Orchestra  
Berg: Violin Concerto (1935)  
Pinchas Zukerman, violin  
Brahms orch. by Schoenberg: Piano Quartet No. 1 in G minor, Op. 25
- 2/19 **David Robertson Conducts Ravel, Barber, and Bartok**  
Ravel: Suite from Ma Mère l'Oye  
Barber: Concerto for Violin and Orchestra, Op. 14  
Gil Shaham, violin  
Bartók: The Wooden Prince
- 2/26 **Reflections on Love**

#### Tuesday:

##### Chicago Symphony Orchestra

- 2/6 **Riccardo Muti conducts Bruckner 7**  
Mussorgsky: *A Night on Bald Mountain*  
Strauss: Don Juan, Op. 20  
Bruckner: Symphony No. 7 in E Major
- 2/13 **Neeme Järvi and Robert Chen**  
Pärt: *Fratres*  
Robert Chen, violin  
Beethoven: Symphony No. 6 in F, Op. 68  
Sibelius: Symphony No. 5 in E-flat Major,
- 2/20 **Ludovic Morlot conducts Ravel**  
Gershwin: *An American in Paris*  
Ravel: Piano Concerto for the Left Hand in D Major  
Denis Kozhukhin, piano  
Stravinsky: *Jeu de cartes*  
Ravel: *La valse*
- 2/27 **Alain Altinoglu conducts the Saint Cecilia Mass**  
Prokofiev: Suite: The Love for Three Oranges  
Poulenc: Gloria  
Sandrine Piau, soprano  
Gounod: Messe solennelle en l'honneur de Sainte-Cécile  
Chicago Symphony Chorus

#### Wednesday:

##### Deutsche Welle Festival Concerts

- 2/7 **Festival of Early Music Cologne**  
Ensemble Alamire; David Skinner  
Anon: L'homme armé (The Armed Man)  
Desprez: Missa "L'homme armé"  
Palestrina: Missa "L'homme armé"
- 2/14 **Mariinsky Theater Orchestra**  
Valery Gergiev, conductor  
Wagner: Prelude to Act One of "Lohengrin"  
Rimsky-Korsakov: Scheherazade  
Beethoven: Symphony No. 4
- 2/21 **Wartburg Concert**  
Capella de la Torre  
Praetorius: A Mighty Fortress is our God  
Giovanni Gabrieli: Magnificat à 14  
Claudio Monteverdi Salve Regina
- 2/28 **Inspired by Beethoven**  
Radio Hesse Symphony Orchestra, Frankfurt  
Andrés Orozco-Estrada, conductor  
Vladimir Tarnopolski: "Be@thoven" –Invocation (world premiere)

#### Thursday:

##### Los Angeles Philharmonic

- 2/1 Conductor: Zubin Mehta  
Anoushka Shankar, sitar  
R. Shankar: Sitar Concerto No. 2  
Strauss Ein Heldenleben
- 2/8 Conductor: Thomas Adès  
Simon Keenlyside, baritone  
Christianne Stotijn, mezzo-soprano  
Steven Isserlis, cello  
Sibelius: The Bard  
Saint-Saëns: Danse macabre  
Thomas Adès: Lieux retrouvés  
Adès: Totentanz (West Coast premiere)
- 2/15 Conductor: James Gaffigan  
Hélène Grimaud, piano  
Brahms: Piano Concerto No. 2  
James Matheson: Unchained  
Ravel: Daphnis and Chloé Suite No. 2
- 2/22 Conductor: Jaap van Zweden  
Beethoven: Symphony No. 5  
Shostakovich: Symphony No. 5

#### Friday:

##### Prairie Performances

Concerts are subject to availability.

- 2/2 University of Illinois Oratorio Society  
University of Illinois Symphony  
5/29/2016  
Andrew McGill, conductor  
Verdi: Stabat Mater  
Brahms: Nanie  
Steven Stuckey: Oratorio: "August 4, 1964"
- 2/9 Classically Black (2001):  
Leontyne Price-"Voice of the Millennium"  
On February 10th, in celebration of Leontyne Price's 91st birthday-a repeat from the "Classically Black" series. The career of the legendary soprano is spotlighted with recordings from her career and interviews in this unabashed "love-fest" with host Roger Cooper, joined by William Warfield and John Wustman.
- 2/16 Champaign-Urbana Symphony  
Stephen Alltop, conductor  
"Music of the Heartland" (3/17/17)  
Copland: Lincoln Portrait  
Gershwin: Rhapsody in Blue  
(encore: Danny Boy Ridenour and Alltop, piano duo-fun!)  
Copland: Symphony No. 3  
Rich Ridenour, piano  
Roger Cooper, narrator



2/23 Classically Black (1994):  
"Miss Marian Anderson"  
We celebrate Marian Anderson's birthday, February 27 with a repeat from the "Classically Black" series. A musical look at the life and artistry of one of America's most celebrated singers of the twentieth century.

## 9 pm

### Night Music

Gillian Martin, Bob Christiansen, Ward Jacobson, Scott Blankenship or John Zech keep you company through the night and into the morning. **NPR News Headlines** at 9:01.

## saturdays

## 7 am

### NPR Weekend Edition

with Scott Simon

## 9 am

### Classics By Request

Submit requests to Vincent Trauth at [classreq@illinois.edu](mailto:classreq@illinois.edu) or **217-265-5064**.

**NPR News Headlines** at 9:01.

## 11 am

### Classics of the Phonograph

John Frayne's weekly exploration of memorable recordings from the 20th century.

- 2/3 Leonard Bernstein Centennial, The Columbia Years, continued
- 2/10 Hans Pfitzner (1969-1949), Conductor and Composer of "Palestrina"
- 2/17 Gidon Kremer, Violinist and Founder of the Kremerata Baltica Chamber Orchestra
- 2/24 The Hollywood String Quartet

## Noon

### Afternoon at the Opera

The Met Season, Live

- 2/3 Il Trovatore (The Troubador) (Verdi). Marco Armiliato, cond., with Maria Agresta (Leonora), Anita Rachvelishvili (Azucena), Yonghoon Lee (Manrico), Quinn Kelsey (di Luna) and the Met Ensemble.
- 2/10 L'Elisir d'Amore ("The Love Potion") (Donizetti). Domingo Hindoyan, cond., with Pretty Yende (Adina), Matthew Polenzani (Nemorino), Davide Luciano (Belcore), Ildebrando D'Arcangelo (Dulcamara), and the Met Ensemble.
- 2/17 Parsifal (Wagner). Yannik Nézet-Séguin, cond., with Evelyn Herlitzius (Kundry), Klaus Florian Vogt (Parsifal), Peter Mattei (Amfortas), Evgeny Nikitin (Klingsor), René Pape (Gurnemanz), and the Met Ensemble.
- 2/24 La Bohème (Puccini). Marco Armiliato, cond., Sonya Yoncheva (Mimi), Susanna Phillips (Musetta), Michael Fabiano (Rodolfo), Lucas Meacham (Marcello), Alexey Lavrov (Schnaunard), Matthew Rose (Colline), Paul Plishka (Benoit/Alcindoro), and the Met Ensemble.

## 4 pm

### NPR All Things Considered



▲ Celebrate soprano Leontyne Price's birthday with Roger Cooper at 7 pm Friday, February 9.

## 5 pm

### Performance Today Weekend

Host Fred Child presents a two-hour weekly program that features classical music in concert from American Public Media studios and sites across the nation and around the world, as well as classical music news, interviews and features. **[Also Sundays at 2 pm]**

## 7 pm

### The Midnight Special

Rich Warren presents folk music and farce, show tunes and satire, traditional and contemporary with gentle irreverence and candid observation.

## 9 pm

### American Parlor Songbook

JP Houston and Julie Van Dusen feature clever songs, charming stories, and hilarious sketches every week.

## 10 pm

### Classics All Night

**NPR News Headlines** at 10:01

## sundays

## 7 am

### NPR Weekend Edition

with Lulu Garcia-Navarro

## 9 am

### Sunday Baroque

**NPR News Headlines** at 9:01.

## 1 pm

### The Record Shelf

## 2 pm

### Performance Today Weekend

## 4 pm

### NPR All Things Considered

## 5 pm

### Classical Music

**willfm**

**101.1 and 90.9 HD2**

## weekdays

**6-9 am**

**Classical Music**

**9 am-noon**

**Classic Mornings**

**with Vic Di Geronimo**

Join Vic for music and companionship and make each morning a classic morning!

**Noon-overnight**

**Classical Music**

**Friday 7-9 pm**

**Prairie Performances**

(see listings page 4)

## Saturdays

**7-9 am**

**Classical Music**

**9-11 am**

**Classics by Request**

Vincent Trauth plays requests at this time each Saturday. Submit requests at [classreq@illinois.edu](mailto:classreq@illinois.edu) or 217-265-5064.

**11 am-Noon**

**Classics of the  
Phonograph**

John Frayne's weekly exploration of memorable recordings from the 20th century. See page 5 for listings.

**Noon-overnight**

**Classical Music**

## Sundays

**all day**

**Classical Music**



Illinois  
**ARTS**  
Council  
AN AGENCY OF  
THE STATE OF ILLINOIS

Programs on WILL Radio are partially sponsored by a grant from the Illinois Arts Council, a state agency.



▲ The Penderecki String Quartet are joined by Pamela Mia Paul on piano at the Music Mountain Chamber Music Festival at 7 pm Sunday, February 11.

## 7-9 pm

**The Evening Concert**

**Music Mountain Chamber Music Festival**

- 2/4 St. Petersburg String Quartet  
Ricardo Cavalcante de Oliveira, viola  
Bartok: Romanian Dances, BB 68 [8:43]  
Borodin: String Quartet # 2 in D Major  
Dvorak: Viola Quintet in E Flat, Opus 97
- 2/11 The Penderecki String Quartet  
Pamela Mia Paul, piano  
Mozart: String Quartet in D Major, K. 575  
Schumann: String Quartet in A, Opus 41 #3  
Dvorak: Piano Quintet in A Major, Opus 81
- 2/18 The Ariel Quartet  
Soyeon Kate Lee, piano  
Mozart: String Quartet in G Major, K.387  
Dvorak: String Quartet in F Major, Opus 96 'American'  
Schumann: Piano Quintet in E Flat, Opus 44
- 2/25 The Harlem String Quartet  
Fei-Fei Dong, piano  
Mozart: String Quartet In B Flat, K. 458  
Bolcom: Three Rags For String Quartet  
Brahms: Piano Quartet In C Minor, Op. 60

## 9 pm

**Classical Music**

## 10 pm

**Harmonia**

Angela Mariani presents Baroque and early music.  
NPR News Headlines at 10:01.

## 11 pm

**The Romantic Hours**

Music, poetry and romance with Mona Golabek.

## midnight

**Classical Music**



Monday - Friday		Saturday		Sunday
NPR Morning Edition with Brian Moline	5:00	BBC Overnight Continued	BBC World Service	
	6:00	Commodity Week	Inside Europe	
	6:30	State Week in Review		
	7:00	NPR Weekend Edition	NPR Weekend Edition	
1A	9:00	The Splendid Table		
	10:00	Wait Wait ... Don't Tell Me	It's Been A Minute with Sam Sanders	
The 21st with Niala Boodhoo	11:00	Ask Me Another	Says You	
Here & Now with Jason Croft	Noon	This American Life	Wait, Wait... Don't Tell Me	
	1:00	The Moth Radio Hour	The Treatment	
	1:30		State Week in Review	
The Closing Market Report	2:00	Radiolab	Reveal	
BBC Business Daily/ Commodity Week (F)	2:30			
Fresh Air	3:00	TED Radio Hour	On the Media	
All Things Considered with Steve Morck	4:00	All Things Considered	All Things Considered	
	5:00	Science Friday	The People's Pharmacy	
	6:00	Big Picture Science	Travel with Rick Steves	
The 21st (repeat)	7:00	Living on Earth	To the Best of Our Knowledge	
Fresh Air (repeat)	8:00	Latino USA		
BBC World Service	Science Friday (F)	9:00	Alternative Radio	New Dimensions
		10:00	Commonwealth Club	Le Show
		11:00	Left, Right, and Center	BBC World Service
		12:00- 5 am	BBC World Service	

**Bold Listing** = National/International News

## Agriculture

### Todd Gleason, host, Closing Market Report & Commodity Week

Opening Market Report: 8:55 am; Market Update: 10:58; Midday Market Report: 12:58 pm; Closing Market Report: 2:06 pm. **Fridays: Commodity Week: 2:36 pm; Grain Market Summary: 4:32 pm.** To listen to archived ag reports, sign up for the Illinois Public Media Ag E-newsletter, or download our agricultural podcasts, visit [www.willag.org](http://www.willag.org)

## Illinois Public Media News

### Scott Cameron, executive editor, Illinois Newsroom

### Brian Moline, managing editor, Illinois Public Media

The news from Illinois Public Media's award-winning staff of reporters, hosts, and producers—Niala Boodhoo, Lee Gaines, Christine Herman, Robin Linn, Jim Meadows, Brian Moline, Alan Montecillo, and Mark Schultz—can be heard during **Morning Edition**, **The 21st**, **Here & Now**, and **All Things Considered**.

## Weather

### Monday-Friday

**AM:** 6:09, 6:20, 6:35, 6:50, 7:09, 7:20, 7:35, 7:50, 8:09, 8:20, 8:35, 8:50 **PM:** 12:37, 4:06, 4:35, 5:06, 5:35

**Arts and Crafts—5-6 am; 11 am-noon****Sun:** Knitting Daily; Grand View**Wed:** Knit and Crochet Now!; Wyland Art Studio**Mon and Fri:** Quilting Arts; Paint This with Jerry Yarnell**Tue and Thu:** Sewing with Nancy; Best of the Joy of Painting**Cooking—6-8 am; noon-2 pm****Sun and Wed:** New Scandinavian Cooking; Ciao

Italia; Taste of Louisiana with Chef John Folse;

Mexico-One Plate at a Time

**Mon and Fri:** Lucky Chow; Julie Taboulie's Lebanese

Kitchen; Taste the Islands with Chef Irie/Taste the

Islands (begins 2/26); Sara's Weeknight Meals

**Tue:** Chef John Besh's New Orleans; Joanne Weir

Gets Fresh; Dining with the Chef; New Orleans

Cooking with Kevin Belton

**Thur:** Chef John Besh's Family Table; Joanne Weir's

Cooking Confidence; My Greek Table with Diane

Kochilas; Nick Stellino Cooking with Friends

**Travel—8-9 am; 2-3 pm****Sun and Wed:** Rudy Maxa's World; Journeys in Japan**Mon and Fri:** Music Voyager; Travelscope**Tue and Thu:** Fringe Benefits; Bare Feet in NYC with Mickela Mallozzi/Curious Travel (begins 2/20)**Gardening/Home Improvement—9-11 am****Mon:** This Old House; Craftsman's Legacy; Growing a Greener World; Beads, Baubles, and Jewels**Fri:** This Old House; Rough Cut—Woodworking with Tommy Mac; Growing a Greener World; Make It Artsy**Tue and Thu:** Woodwright's Shop; Woodsmith Shop; Growing a Greener World; Start Up**Wed:** Ask This Old House; In the Americas with David Yetman; Garden Smart; Craft in America**Sun:** Ask This Old House; Journeys in Japan;

Growing a Greener World; For Your Home

**Weekend Marathons—5-11 am Saturday;****11 am-5 pm Sunday****Feb 3/4: Big Game Snack Attack**

Plan for all your tailgating essentials.

**Feb 10/11: Let the Good Times Roll**

Celebrate Mardi Gras with the best Cajun and Creole dishes.

**Feb 14: Be Mine**

Today is the day for love!

**Feb 17/18: Chinese New Year**

2018 is the year of the dog.

**Feb 24/25: Souper Weekend**

Nothing warms you up better than a hardy bowl of soup.

**Monday-Friday****9:00** PBS NewsHour**10:00** Nightly Business Report**Mondays****7:00** AfroPop**8:00** Our American Family: The Clarks (2/5); Local USA (2/19, 2/26)**8:30** Stories from the Stage**10:30** To the Contrary with Bonnie Erbe**11:00** Bridging The Divide: Tom Bradley and the Politics of Race (2/5); Independent Lens: Wilhemina's War (2/12); Independent Lens: Birth of a Movement (2/19); Mr. Civil Rights: Thurgood Marshall and the NAACP (2/26)**Tuesdays****7:00** America Reframed**8:30** Karamu: 100 Years in the House (2/6); Fighting on Both Fronts: The Story of the 370th (2/20)**10:30** Global 3000**11:00** America Reframed**Wednesdays****7:00** Independent Lens: Rat Film (2/28)**7:30** Independent Lens: Winnie (2/7); Independent Lens: Tell Them We Are Rising: The Story of Black College (2/21)**8:00** Frontline (2/14); In Their Own Words (2/28)**10:30** Focus On Europe**11:00** Independent Lens: Through a Lens Darkly (2/7); POV: Do Not Resist (2/14); Independent Lens: Tell Them We Are Rising: The Story of Black College (2/21); Independent Lens: Rat Film (2/28)**Thursdays****7:00** Impossible Builds**8:00** Secrets of the Dead (2/1, 2/8, 2/22); Black Women in Medicine (2/15)**10:30** Scully/The World Show**11:00** NOVA**Fridays****7:00** American Experience: Triangle Fire (2/2); American Experience: The Gilded Age (2/9); American Experience: Bombing of Wall Street (2/16); Frontline (2/23)**8:00** John Lewis - Get in the Way (2/2); 1964: The Fight for a Right (2/16)**10:30** Asia Insight**11:00** Queen Elizabeth's Secret Agents (2/2, 2/9, 2/16); Frontline (2/23)**Saturdays****7:00** Deep City: The Birth of the Miami Sound (2/3); Independent Lens: A Ballerina's Tale (2/10); American Masters: Maya Angelou (2/17); Great Performances Movies for Grownups Awards with AARP The Magazine (2/24)**8:00** American Masters: B.B. King (2/3); Black Ballerina (2/10)**9:00** America Reframed**10:00** Colored Frames (2/3)**10:30** Karamu: 100 Years in the House (2/10); Fighting on Both Fronts: The Story of the 370th (2/24)**11:00** Deep City: The Birth of the Miami Sound (2/3); Independent Lens: A Ballerina's Tale (2/10); American Masters: Maya Angelou (2/17); Great Performances Movies for Grownups Awards with AARP The Magazine (2/24)**Sundays****7:00** Animals with Cameras: A Nature Miniseries (2/4, 2/11, 2/18); Nature (2/25)**8:00** We'll Meet Again**9:00** Defeating Cancer: Precision Medicine and Personalized Care (2/4); POV: Presenting Princess Shaw (2/11); Independent Lens: The Black Panthers: Vanguard of the Revolution (2/18); Independent Lens: Accidental Courtesy (2/25)**10:00** What Love Is-The Duke Pathfinders 50 (2/4)**10:30** Graceful Voices (2/11); An Unlikely Friendship (2/25)**11:00** Animals with Cameras: A Nature Miniseries (2/4, 2/11, 2/18); Nature (2/25)



Monday - Friday		Saturday	Sunday
Newsline	5:00	Mister Rogers' Neighborhood	Sid the Science Kid
Body Electric (M,W,F) Sit and Be Fit (T, Th)	5:30	Dinosaur Train	Dinosaur Train
Ready Jet Go!	6:00	Bob the Builder	Sesame Street
The Cat in the Hat	6:30	Daniel Tiger's Neighborhood	Daniel Tiger's Neighborhood
Nature Cat	7:00	Daniel Tiger's Neighborhood/ Pinkalicious & Peterrific (begins 2/24)	Daniel Tiger's Neighborhood/ Pinkalicious & Peterrific (begins 2/25)
Curious George	7:30	Splash and Bubbles	Splash and Bubbles
Curious George/Pinkalicious & Peterrific (begins 2/19)	8:00	Curious George	Curious George
Daniel Tiger's Neighborhood/Mister Rogers' Neighborhood (2/26-3/2)	8:30	Nature Cat	Nature Cat
Daniel Tiger's Neighborhood	9:00	Ready Jet Go!	Ready Jet Go!
Splash and Bubbles	9:30	Wild Kratts	Cyberchase
Sesame Street	10:00	Motorweek	Consuelo Mack Wealthtrack
Super Why	10:30	Samantha Brown's Places to Love	To the Contrary
Dinosaur Train	11:00	Mid-American Gardener	America's Heartland
Peg + Cat	11:30	P. Allen Smith's Garden Home	Market to Market
Sesame Street	Noon	America's Test Kitchen	<b>Specials</b> <b>2/4</b> 12:00 Afropop: The Ultimate Cultural Exchange 1:00 Afropop: The Ultimate Cultural Exchange 2:00 Afropop: The Ultimate Cultural Exchange <b>2/11</b> 12:00 Afropop: The Ultimate Cultural Exchange 1:00 Afropop: The Ultimate Cultural Exchange 2:30 Fighting on Both Fronts: The Story of the 370th <b>2/18</b> 12:00 Vermeer, Beyond Time 1:30 Karamu: 100 Years in the House 2:00 Camp 72: The Quest for Justice and Healing <b>2/25</b> 12:00 Attakapas: The Cajun Story 1:00 Otherwise It's Just Firewood 2:00 Evening with Carrie Newcomer
Splash and Bubbles	12:30	Cook's Country	
Sewing Programs M: Fons & Porter's Love of Quilting Tu: Sewing with Nancy W: It's Sew Easy Th: Fit 2 Stitch F: Quilting Arts	1:00	Christopher Kimball's Milk Street Television	
Painting and How To Programs M: Craftsman's Legacy Tu: Paint This with Jerry Yarnell W: Make48 Th: Garden Smart F: Ask This Old House	1:30	Martha Bakes	
Nature Cat	2:00	Simply Ming	
Wild Kratts	2:30	Dining with the Chef	
Arthur	3:00	Lidia's Kitchen	
Odd Squad	3:30	My Greek Table with Diane Kochilas/Dream of Italy (begins 2/17)	
Odd Squad	4:00	This Old House Hour	
DW News	4:30		
BBC World News	5:00	PBS NewsHour Weekend	PBS NewsHour Weekend
Nightly Business Report	5:30	Rick Steves' Europe	BBC Newsnight
PBS NewsHour	6:00	Antiques Roadshow	Call The Midwife

See the full Create & World schedules  
at [will.illinois.edu/tv/schedule](http://will.illinois.edu/tv/schedule)

## WILL Kids 24/7 on 12.2

For the full WILL Kids 24/7 schedule,  
go to [www.illinois.edu/tv/schedule](http://www.illinois.edu/tv/schedule)





Photo: Courtesy of the Museum of the City of New York

## A tale of today

In the closing decades of the 19th century, during what has become known as the Gilded Age, the population of the United States doubled in the span of a single generation. The nation became the world's leading producer of food, coal, oil, and steel; attracted vast amounts of foreign investment; and pushed into markets in Europe and the Far East. As national wealth expanded, two classes rose simultaneously, separated by a gulf of experience and circumstance that was unprecedented in American life. These disparities sparked passionate and violent debate over questions still being asked in our own times: How is wealth best distributed, and by what process? Does government exist to protect private property or provide balm to the inevitable casualties of a churning industrial system? Should the government concern itself chiefly with economic growth or economic justice? The battles over these questions were fought in Congress, the courts, the polling place, the workplace, and the streets. The outcome of these disputes was both uncertain and momentous, and marked by a passionate vitriol and level of violence that would shock the conscience of many Americans today. ***The Gilded Age***, a film by **American Experience** at 8 pm Tuesday, February 6, presents a compelling and complex story of one of the most convulsive and transformative eras in American history.

One unlucky day 13,000 years ago, a slight, malnourished teenager missed her footing and tumbled to the bottom of a 100-foot pit deep inside a cave in Mexico's Yucatán. Rising seas flooded the cave and cut it off from the outside world—until a team of divers chanced upon her nearly-complete skeleton in 2007. Intricate detective work reveals that the young woman's bones are among the earliest known human remains in the Americas. What drove her to venture nearly a mile underground inside a vast cave? Where did her people come from, and why does she look so distinct from today's Native Americans? From a stunning Mexico cave to the wilderness of the Yukon, from the genetics lab to the forefront of forensics, **NOVA** pursues tantalizing new clues that are rewriting the story of the forgotten first people who ventured into our continent. Watch *First Face of America* at 8 pm Wednesday, February 7 to experience this unique scientific find.

## Perfectly preserved

Photo: Courtesy of WGBH/Francis Cordero Ramirez





Photo: Courtesy of the Library of Congress

## Wall Street explosion

On September 16, 1920, as hundreds of Wall Street workers headed out for lunch, a horse-drawn cart packed with dynamite exploded in front of Morgan Bank—the world’s most powerful banking institution. The blast turned the nation’s financial center into a bloody war zone and left 38 dead and hundreds more seriously injured. As financial institutions around the country went on high alert, many wondered if this was the strike against American capitalism that radical agitators had threatened for so long. A mostly forgotten act of terror that remains unsolved today, the bombing helped launch the career of a young J. Edgar Hoover and sparked a bitter national debate about how far the government should go to protect the nation from acts of political violence. Based on Beverly Gage’s *The Day Wall Street Exploded: A Story of America in its First Age of Terror*, **The Bombing of Wall Street** is executive produced by Mark Samels, written and directed by Susan Bellows, and produced by Michael Rossi and Susan Bellows. The film premieres on **American Experience** at 8 pm Tuesday, February 13.

*AARP The Magazine* announced that Helen Mirren will receive the 2017 Movies for Grownups Career Achievement Award. The AARP Movies for Grownups® multimedia franchise was established in 2002 to celebrate and encourage filmmaking with unique appeal to movie lovers with a grownup state of mind—and recognize the inspiring artists who make them.

Mirren, an Academy®, Golden Globe®, Emmy®, Tony®, BAFTA® & Olivier® Award-winning actress will receive Movies for Grownups® highest honor at the Beverly Wilshire, Beverly Hills. *AARP The Magazine* will host the 17th annual Movies for Grownups® Awards, where many other awards, including best actor, best actress and best director, will be presented. The event proceeds benefit AARP Foundation, which works to end senior poverty by building economic opportunity and social connections for vulnerable older adults in L.A. and across the country. The show premieres at 8 pm Friday, February 23.

“I am greatly honoured by this award. I consider film to be a high art form, that informs, inspires, and entertains,” said Mirren. “It is the ultimate mirror up to nature. I am very grateful for the opportunity to be a part of that culture, both as performer and audience.”

## The lovely Helen Mirren



Photo: Courtesy of Madatory, credit Trevor Leighton



## WILL-TV

### 1 Thursday

- 7:00 Mid-American Gardener** (TV-G)  
*Repeated 11 am 2/3.*
- 7:30 Ask This Old House** (TV-G)  
*Dutch Door, Landscape Checkers. Repeated 1:30 pm 2/2.*
- 8:00 Doc Martin** (TV-PG)  
*Movement.* Season 3, part 2 of 7. In a life-changing decision, Bert Large abandons his plumbing business to open his own restaurant.
- 9:00 Masterpiece Classic** (TV-PG)  
*Victoria. Entente Cordiale.* Season 2, part 3 of 7. Victoria decides to try her hand at foreign relations, and takes the royal court on an adventure to France, stepping toe to toe with the cunning King of the French, Louis Philippe. *Repeated 2 am 2/3; 7 pm 2/4; 1 am 2/6; and 4 am 2/6.*
- 10:00 Last of the Summer Wine**
- 10:30 BBC World News**
- 11:00 Amanpour On PBS**
- 11:30 Beyond 100 Days**

### 2 Friday

- 7:00 Washington Week**
- 7:30 To Be Announced**
- 8:00 Great Performances** (TV-PG)  
*Nas Live from the Kennedy Center: Classical Hip-Hop.* See article on page 2. *Repeated 2 am 2/4.*
- 9:00 Alicia Keys-Landmarks Live In Concert: A Great Performances Special** (TV-PG)  
Enjoy the debut of a pop music series. Grammy-winner Alicia Keys performs in notable locations all around New York, including the world-famous Circle Line, the Unisphere and Harlem's Apollo. Hosted by Chad Smith of the Red Hot Chili Peppers. *Repeated 3 am 2/4.*
- 10:00 Last of the Summer Wine**
- 10:30 BBC World News**
- 11:00 Amanpour On PBS**
- 11:30 BBC World News**

### 3 Saturday

- 7:00 As Time Goes By**
- 7:30 Keeping Up Appearances**
- 8:00 Call The Midwife** (TV-14)  
Season 6, part 5 of 8. Nonnatus House welcomes a new recruit, Nurse Valerie Dyer. A vulnerable young man captures the hearts of Fred and Violet, while the whereabouts of Sister Mary Cynthia causes distress among the team. *Repeated 6 pm 2/4; and 12 am 2/5.*
- 9:00 Doctor Blake Mysteries** (TV-PG)  
*Lucky Numbers.* Season 4, part 3 of 8. A kidnapping involving the winners of the first-ever state lottery leads Blake into a shady world of greed and envy.
- 10:00 Doctor Who: Tom Baker Movies** (TV-PG)  
*Nightmare of Eden.* The TARDIS arrives on the space liner Empress, which has become locked together with a private ship, the Hecate, after colliding with it on emerging from hyperspace.
- 11:30 Austin City Limits** (TV-PG)  
*LCD Soundsystem.* Relish the ACL debut of alternative rock icon LCD Soundsystem.

### 4 Sunday

- 7:00 Masterpiece Classic** (TV-PG)  
*Victoria. Entente Cordiale.* Season 2, part 3 of 7. Victoria decides to try her hand at foreign relations, and takes the royal court on an adventure to France, stepping toe to toe with the cunning King of the French, Louis Philippe. *Repeated 1 am 2/6; and 4 am 2/6.*
- 8:00 Masterpiece Classic** (TV-PG)  
*Victoria. Faith, Hope, and Charity.* Season 2, part 4 of 7. News of the horrific famine in Ireland has finally reached the queen. She is adamant that her government should be doing more to help, but meets with surprising opposition from her prime minister. *Repeated 2 am 2/6; 9 pm 2/8; 2 am 2/10; 7 pm 2/11; 1 am 2/13; and 4 am 2/13.*
- 9:00 Queen Elizabeth's Secret Agents** (TV-PG)  
Part 2 of 3. Elizabeth's enemies grow in strength, but her spymaster Robert Cecil also fights an enemy within. An ambitious aristocrat is trying to take over his network. At stake is control over the aging queen and the power to choose the next King of England. *Repeated 3 am 2/6.*
- 10:00 Front and Center** (TV-PG)  
*CMA Songwriters Series Presents: Miranda Lambert.* Twelve-time CMA Award winner Miranda Lambert at Marathon Music Works in Nashville.
- 11:00 Song of the Mountains** (TV-G)  
*John Cowan with Darin & Brooke Aldridge.*

### 5 Monday

- 7:00 Antiques Roadshow** (TV-G)  
*New Orleans, La.* Part 2 of 3. Incredible stories and items from the Crescent City include a "Blade Runner" set decoration, Agnes Martin mixed-media abstractions, ca. 1955, and a feather golf ball ca. 1840. *Repeated 1 am 2/7; 3 am 2/10; and 6 pm 2/10.*
- 8:00 Antiques Roadshow** (TV-G)  
*Jacksonville, Fla.* Part 1 of 3. Highlights include a Laurel and Hardy 'Swiss Miss' horn that was used as a prop in their 1930 film; a silver presentation cup, ca. 1780, that was gifted from Lafayette to Major General Nathaniel Greene during the Revolutionary War; and a Thomas Hart Benton oil on tin, ca. 1950. *Repeated 2 am 2/7.*
- 9:00 Independent Lens** (TV-14) (DVS)  
*Winnie.* See story on page 1. *Repeated 3 am 2/7.*
- 10:30 BBC World News**
- 11:00 Amanpour On PBS**
- 11:30 Beyond 100 Days**

### 6 Tuesday

- 7:00 We'll Meet Again** (TV-PG)  
*Lost Children of Vietnam.* Part 3 of 6. Join Ann Curry for the dramatic reunions between people separated after the war. Tina, born in Vietnam, searches for her American father. Nam hopes to find the Texas cowboy who saved him as a young boy and inspired him to come to America. *Repeated 1 am 2/8; and 4 am 2/8.*
- 8:00 American Experience** (TV-PG) (DVS)  
*The Gilded Age.* See article on page 10. *Repeated 2 am 2/8.*

- 10:00 **Last of the Summer Wine**  
 10:30 **BBC World News**  
 11:00 **Amanpour On PBS**  
 11:30 **Beyond 100 Days**

## 7 Wednesday

- 7:00 **Animals with Cameras, A Nature Miniseries** (TV-G) (DVS)  
 Part 2 of 3. Witness the secret lives of animals as never before, as this three-part series uncovers truly unprecedented behavior. *Repeated 1 am 2/9; and 4 am 2/9.*
- 8:00 **NOVA** (TV-PG)  
*First Face of America.* See article on page 10. *Repeated 2 am 2/9.*
- 9:00 **Impossible Builds** (TV-G)  
*The Scorpion Tower.* Part 1 of 5. Follow the construction of one of the most complex skyscrapers ever to make it off the drawing board. Its design is so radical that construction experts have turned to a building material never-before used in skyscrapers. *Repeated 3 am 2/9.*
- 10:00 **Last of the Summer Wine**  
 10:30 **BBC World News**  
 11:00 **Amanpour On PBS**  
 11:30 **Beyond 100 Days**

## 8 Thursday

- 7:00 **Mid-American Gardener** (TV-G)  
*Repeated 11 am 2/10.*
- 7:30 **Ask This Old House** (TV-G)  
*Rain Chain, Vanity Installation.* *Repeated 1:30 pm 2/9.*
- 8:00 **Doc Martin** (TV-PG)  
*City Slickers.* Season 3, part 3 of 7. The Oakwoods, a family of city slickers seeking a new life by the sea, set out to disrupt the tranquility of Portwenn.
- 9:00 **Masterpiece Classic** (TV-PG)  
**Victoria.** *Faith, Hope, and Charity.* Season 2, part 4 of 7. News of the horrific famine in Ireland has finally reached the queen. She is adamant that her government should be doing more to help, but meets with surprising opposition from her prime minister. *Repeated 2 am 2/10; 7 pm 2/11; 1 am 2/13; and 4 am 2/13.*
- 10:00 **Last of the Summer Wine**  
 10:30 **BBC World News**  
 11:00 **Amanpour On PBS**  
 11:30 **Beyond 100 Days**

## 9 Friday

- 7:00 **Washington Week**  
 7:30 **To Be Announced**  
 8:00 **American Epic Sessions** (TV-PG)  
 Witness a historic recording session led by Jack White and T Bone Burnett with top artists, including Willie Nelson, Elton John, Nas, Taj Mahal, Alabama Shakes, Beck, and Los Lobos, as they recreate America's musical past using a recording lathe. *Repeated 2 am 2/11*
- 10:00 **Last of the Summer Wine**  
 10:30 **BBC World News**  
 11:00 **Amanpour On PBS**  
 11:30 **BBC World News**

## 10 Saturday

- 7:00 **As Time Goes By**  
 8:00 **Call The Midwife** (TV-14)  
 Season 6, part 6 of 8. Valerie Dyer oversees the care of an expectant Somali woman and is shocked when she uncovers a troubling aspect of this unfamiliar culture. The Nonnatus family unites to provide the very best care for Sister Mary Cynthia. *Repeated 6 pm 2/11; and 12 am 2/12.*
- 9:00 **Doctor Blake Mysteries** (TV-PG)  
*Against The Odds.* Season 4, part 4 of 8. A jockey dies the morning after a big win.
- 10:00 **Doctor Who: Tom Baker Movies** (TV-PG)  
*The Horns of Nimon.* The inhabitants of the planet Skonnos have been promised by an alien Nimon that he will restore their empire to greatness if they in return provide young sacrifices and radioactive hymetosite crystals, both of which they are obtaining from the nearby planet Aneth.
- 11:33 **Austin City Limits** (TV-PG)  
*Dan Auerbach/Shinyribs.* Akron's Dan Auerbach puts the Black Keys on hold to showcase his second solo album *Waiting on a Song.* Fronted by Kevin Russell of the Gourds, Austin's Shinyribs whips up Texas country soul from its new LP *I Got Your Medicine.*

## 11 Sunday

- 7:00 **Masterpiece Classic** (TV-PG)  
**Victoria.** *Faith, Hope, and Charity.* Season 2, part 4 of 7. News of the horrific famine in Ireland has finally reached the queen. She is adamant that her government should be doing more to help, but meets with surprising opposition from her prime minister. *Repeated 1 am 2/13; and 4 am 2/13.*
- 8:00 **Masterpiece Classic** (TV-PG)  
**Victoria.** *The King Over The Water.* Season 2, part 5 of 7. Feeling suffocated by the weight of the crown, Victoria escapes with her court to the Scottish highlands. She and Albert revel in the opportunity to be a normal husband and wife, but the holiday can't last forever. *Repeated 2 am 2/13; 9 pm 2/15; 2 am 2/17; 7 pm 2/18; 1 am 2/20; and 4 am 2/20.*
- 9:00 **Queen Elizabeth's Secret Agents** (TV-PG)  
 Part 3 of 3. England has a new monarch, King James I, and Elizabeth's former spymaster Robert Cecil faces his toughest test. A group of religious extremists plans to blow up the Houses of Parliament with the king inside—what we call the Gunpowder Plot. *Repeated 3 am 2/13.*
- 10:00 **Front and Center** (TV-PG)  
*Sheryl Crow.* Nine-time Grammy Award-winning singer/songwriter Sheryl Crow celebrates her return to the stage at the Iridium. Crow treats fans to a selection of new music and most well-known hits including 'Be Myself,' 'Soak Up the Sun,' and 'All I Wanna Do.'
- 11:00 **Song of the Mountains** (TV-G)  
*Eddy Raven with Lorraine Jordan & Carolina Road.*

## 12 Monday

- 7:00 Antiques Roadshow** (TV-G)  
*New Orleans, La.* Part 3 of 3. Fabulous finds in NOLA include an "Andy Warhol" portrait by Jamie Wyeth from around 1975, a Chinese gold-splashed bronze wine vessel dating to about 1795, and a 1904 English Smith & Son tourbillon pocket watch. *Repeated 1 am 2/14; 3 am 2/17; and 6 pm 2/17.*
- 8:00 Antiques Roadshow** (TV-G)  
*Jacksonville, Fla.* Part 2 of 3. Highlights include a Babyland Rag topsy-turvy doll, a diamond Art Deco bracelet watch, and Robert E. Lee's own map of critical battle areas around Richmond. *Repeated 2 am 2/14.*
- 9:00 POV** (TV-PG)  
*Do Not Resist.* See article on page 3. *Repeated 3 am 2/14.*
- 10:30 BBC World News**
- 11:00 Amanpour On PBS**
- 11:30 Beyond 100 Days**

## 13 Tuesday

- 7:00 We'll Meet Again** (TV-PG)  
*Heroes of 9/11.* Season 1, part 4 of 6. Join Ann Curry for dramatic reunions between people whose lives intersected on 9/11. Patrick searches for the stranger who comforted him after the disaster, and Tim hopes to thank the fellow chaplain who gave him the strength to carry on. *Repeated 1 am 2/15; and 4 am 2/15.*
- 8:00 American Experience** (TV-PG) (DVS)  
*Bombing of Wall Street.* See article on page 11. *Repeated 2 am 2/15.*
- 9:00 Frontline**  
*The Gang Crackdown.* Investigate killings linked to the MS-13 gang and the crackdown that swept up immigrant teens. *Repeated 3 am 2/15.*
- 10:00 Last of the Summer Wine**
- 10:30 BBC World News**
- 11:00 Amanpour On PBS**
- 11:30 Beyond 100 Days**

## 14 Wednesday

- 7:00 Animals with Cameras, A Nature Miniseries** (TV-G) (DVS)  
 Part 3 of 3. Witness the secret lives of animals as never before, as this three-part series uncovers truly unprecedented behavior. *Repeated 1 am 2/16; and 4 am 2/16.*
- 8:00 NOVA** (TV-PG)  
*Great Escape at Dunkirk.* Join archaeologists and divers recovering remains of ships and planes lost during World War II's epic Dunkirk operation. *Repeated 2 am 2/16.*
- 9:00 Impossible Builds** (TV-G)  
*Europe in the Desert.* Part 2 of 5. Can six sand islands, poking out of the Persian Gulf near Dubai, be transformed into the most luxurious holiday destination on earth? One man believes they can and he's risking tens of millions of dollars to prove it. *Repeated 3 am 2/16.*

- 10:00 Last of the Summer Wine**
- 10:30 BBC World News**
- 11:00 Amanpour On PBS**
- 11:30 Beyond 100 Days**

## 15 Thursday

- 7:00 Mid-American Gardener** (TV-G)  
*Repeated 11 am 2/17*
- 7:30 Ask This Old House** (TV-G)  
*Lawn Care, Workshop of the Future.* *Repeated 1:30 pm 2/16.*
- 8:00 Doc Martin** (TV-PG)  
*The Admirer.* Season 3, part 4 of 7. Portwenn looks set to become a hotbed of passion.
- 9:00 Masterpiece Classic** (TV-PG)  
*Victoria. The King Over The Water.* Season 2, part 5 of 7. Feeling suffocated by the weight of the crown, Victoria escapes with her court to the Scottish highlands. She and Albert revel in the opportunity to be a normal husband and wife, but the holiday can't last forever. *Repeated 2 am 2/17; 7 pm 2/18; 1 am 2/20; and 4 am 2/20.*
- 10:00 Last of the Summer Wine**
- 10:30 BBC World News**
- 11:00 Amanpour On PBS**
- 11:30 Beyond 100 Days**

## 16 Friday

- 7:00 Washington Week**
- 7:30 To Be Announced**
- 8:00 American Masters** (TV-PG)  
*Maya Angelou.* Journey through the prolific life of the I Know Why the Caged Bird Sings author and activist who inspired generations with lyrical modern African-American thought. Features new interviews with Oprah Winfrey, Common, the Clintons, and others. *Repeated 2 am 2/18.*
- 10:00 Last of the Summer Wine**
- 10:30 BBC World News**
- 11:00 Amanpour On PBS**
- 11:30 BBC World News**

## 17 Saturday

- 7:00 As Time Goes By**
- 7:30 To Be Announced**
- 8:00 Call The Midwife** (TV-14)  
 Season 6, part 7 of 8. Dr. Turner helps the Mullucks cope with the stresses of caring for a disabled child as the terrible legacy of thalidomide becomes apparent. Nurse Crane faces an unexpected crisis. *Repeated 6 pm 2/18; and 12 am 2/19.*
- 9:00 Doctor Blake Mysteries** (TV-PG)  
*The Price of Love.* Season 4, part 5 of 8. When a soldier is killed during a routine training exercise, Doctor Blake investigates soldiers and their wives.
- 10:00 Doctor Who: Tom Baker Movies** (TV-PG)  
*The Leisure Hive.* The Doctor and Romana visit the Leisure Hive on the planet Argolis, the surface of which is uninhabitable following a twenty minute nuclear war between the Argolins and their enemies the Foamasi.
- 11:30 Austin City Limits** (TV-PG)  
*Chris Stapleton/Turnpike Troubadours.* Enjoy an hour of contemporary country music.



## 18 Sunday

- 7:00 Masterpiece Classic (TV-PG)**  
**Victoria.** *The King Over The Water.* Season 2, part 5 of 7. Feeling suffocated by the weight of the crown, Victoria escapes with her court to the Scottish highlands. She and Albert revel in the opportunity to be a normal husband and wife, but the holiday can't last forever. *Repeated 1 am 2/20; and 4 am 2/20*
- 8:00 Masterpiece Classic (TV-PG)**  
**Victoria.** *The Luxury of Conscience.* Season 2, part 6 of 7. Victoria and Albert have to face their worst nightmare as parents, while Peel takes on the ultimate battle in Parliament. When tragedy strikes, they must confront the true cost of standing by their convictions. *Repeated 2 am 2/20; 9 pm 2/22; 2 am 2/24; 7 pm 2/25; 1 am 2/27; and 4 am 2/27.*
- 9:00 Secrets of the Tower of London (TV-PG)**  
 Standing guard over the city of London for nearly 1000 years, this formidable fortress has been a royal castle, a prison, a place of execution and torture, an armory, and the Royal Mint. *Repeated 3 am 2/20.*
- 10:00 Front and Center (TV-PG)**  
**Seal.** Three-time Brit Award and four-time Grammy Award winner Seal takes center stage at the Vibratto Jazz Club in Los Angeles.
- 11:00 Song of the Mountains (TV-G)**  
*Mountain Faith.*

## 19 Monday

- 7:00 Antiques Roadshow (TV-G)**  
**St. Louis, Mo.** Part 1 of 3. Journey through the Gateway to the West for treasures such as a 1901 "Longest Bearded Man" banner, a 1602 Adam Islip-published book of Chaucer's complete works, and a 15th-century Chinese Bodhisattva gilt bronze. *Repeated 1 am 2/21; 3 am 2/24; and 6 pm 2/24.*
- 8:00 Independent Lens (TV-PG)**  
**Tell Them We Are Rising: The Story of Black College.** See article on page 3. *Repeated 2 am 2/21.*
- 9:30 POV (TV-PG)**  
**All The Difference.** Accompany two African-American teens from the South Side of Chicago on their journey to achieve their dream of graduating from college. Follow the young men through five years of hard work, sacrifice, setbacks, and uncertainty. *Repeated 3:30 am 2/21.*
- 11:00 Amanpour On PBS**
- 11:30 Beyond 100 Days**

## 20 Tuesday

- 7:00 We'll Meet Again (TV-PG)**  
**Freedom Summer.** Season 1, part 5 of 6. Join Ann Curry for the dramatic reunions of people who lost touch after the civil rights movement. Fatima hopes to thank Thelma for her courage in the face of racism, and Sherie searches for the friend who inspired her commitment to social justice. *Repeated 1 am 2/22; and 4 am 2/22.*
- 8:00 Frontline**  
**Bitter Rivals: Iran and Saudi Arabia.** Part 1 of 2. Examine the dangerous rivalry that has plunged the Middle East into sectarian war.. *Repeated 2 am 2/22.*

- 10:00 Last of the Summer Wine**
- 10:30 BBC World News**
- 11:00 Amanpour On PBS**
- 11:30 Beyond 100 Days**

## 21 Wednesday

- 7:00 Nature (TV-PG)**  
**The Last Rhino.** Meet Sudan, the last male of his kind, the northern white rhino, living in a Kenyan sanctuary under 24-hour armed guard. Trace his harrowing journey as scientists and animal experts race to save the species before it dies out forever. *Repeated 1 am 2/23; and 4 am 2/23.*
- 8:00 NOVA (TV-G)**  
**Prediction by the Numbers.** Discover how predictions underpin nearly every aspect of our lives and why some succeed spectacularly while others fail. *Repeated 2 am 2/23.*
- 9:00 Impossible Builds (TV-G)**  
**The Floating House.** Part 3 of 5. Follow the build to make living beneath the waves into a reality as a team in Dubai attempts to construct a floating house combining the best of land and marine design. Will they achieve the impossible? *Repeated 3 am 2/23.*
- 10:00 Last of the Summer Wine**
- 10:30 BBC World News**
- 11:00 Amanpour On PBS**
- 11:30 Beyond 100 Days**

## 22 Thursday

- 7:00 Mid-American Gardener (TV-G)**  
*Repeated 11 am 2/24.*
- 7:30 Ask This Old House (TV-G)**  
**Spitting Faucet, Painting 101.** *Repeated 1:30 pm 2/23.*
- 8:00 Doc Martin (TV-PG)**  
**The Holly Bears A Prickle.** Season 3, part 5 of 7. Doc Martin and Louisa are finally going on their first date.
- 9:00 Masterpiece Classic (TV-PG)**  
**Victoria.** *The Luxury of Conscience.* Season 2, part 6 of 7. Victoria and Albert have to face their worst nightmare as parents, while Peel takes on the ultimate battle in Parliament. When tragedy strikes, they must confront the true cost of standing by their convictions.. *Repeated 2 am 2/24; 7 pm 2/25; 1 am 2/27; and 4 am 2/27.*
- 10:00 Last of the Summer Wine**
- 10:30 BBC World News**
- 11:00 Amanpour On PBS**
- 11:30 Beyond 100 Days**

## 23 Friday

- 7:00 Washington Week**
- 7:30 To Be Announced**
- 8:00 Great Performances (TV-PG)**  
**Movies for Grownups Awards with AARP The Magazine.** See article on page 11. *Repeated 2 am 2/25.*
- 10:00 Last of the Summer Wine**
- 10:30 BBC World News**
- 11:00 Amanpour On PBS**
- 11:30 BBC World News**

## 24 Saturday

- 8:00 Call The Midwife** (TV-14)  
Season 6, part 8 of 8. An unexpected turn of events leads to a hastily arranged wedding. Shelagh finally goes into labor. The arrival of the birth control pill leads to unforeseen consequences. *Repeated 6 pm 2/25; and 12 am 2/26.*
- 9:00 Doctor Blake Mysteries** (TV-PG)  
*A Difficult Lie.* Season 4, part 6 of 8. Blake is called in to investigate Reynolds who had enemies at the golf course and the newspaper.
- 10:00 Doctor Who: Tom Baker Movies** (TV-PG)  
*Meglos.* The Doctor is invited to visit the planet Tigella by its leader, Zastor, who has become concerned about disputes between his people's two opposing factions, the religious Deons and the scientist Savants.
- 11:30 Austin City Limits** (TV-PG)  
*Ms. Lauryn Hill.* The Grammy-winning singer and songwriter performs a set of solo hits, new songs, and Fugees classics.

## 25 Sunday

- 7:00 Masterpiece Classic** (TV-PG)  
*Victoria. The Luxury of Conscience.* Season 2, part 6 of 7. Victoria and Albert have to face their worst nightmare as parents, while Peel takes on the ultimate battle in Parliament. When tragedy strikes, they must confront the true cost of standing by their convictions. *Repeated 7 pm 2/25; 1 am 2/27; and 4 am 2/27*
- 8:00 Masterpiece Classic** (TV-PG)  
*Victoria. Season Finale.* Season 2, part 7 of 7. Albert is intent on re-creating the Christmas-time joy he remembers from his youth. Victoria has more than one surprise visitor and finds herself threatened by a relative. Meanwhile, the festive spirit sparks romantic tension throughout the palace. *Repeated 2 am 2/27; and 9 pm 3/1.*
- 9:30 PBS Previews: The Best of PBS Indies** (TV-PG)  
Preview independent documentaries presented by **POV** and **Independent Lens** in winter and spring 2018. Highlighted films include "I Am Not Your Negro," "Do Not Resist," "Dolores," "No Man's Land," "Bill Nye - Science Guy" and "Served Like a Girl." *Repeated 3:30 am 2/27.*
- 10:00 Front and Center** (TV-PG)  
*Jack Johnson.* Singer/songwriter Jack Johnson appears at the McKittrick Hotel joined by G. Love for performances of some of his greatest hits and new material including 'Better Together,' 'Good People,' and 'Home.'
- 11:00 Song of the Mountains** (TV-G)  
*Bluegrass Sweethearts / Mark Brine / Irene Kelley.*

## 26 Monday

- 7:00 Antiques Roadshow** (TV-G)  
*St. Louis, Mo.* Part 2 of 3. Discover spectacular St. Louis treasures, including 1927 Rookwood Shirayamadani black opal vase, an Elijah Pierce preaching stick from around 1950 and an Ozark Airlines poster dating to around 1960. *Repeated 1 am 2/28; and 4 am 2/28.*
- 8:00 Antiques Roadshow** (TV-G)  
*Jacksonville, Fla.* Part 3 of 3. Highlights include a NASA 'Mercury 7' signed photo, ca. 1960; an 1862 Abraham Lincoln signed document; and a Tiffany & Co. gold necklace. ca. 1875. *Repeated 2 am 2/28.*
- 9:00 Independent Lens** (TV-PG)  
*Rat Film.* Trace the history of Baltimore through the rats and the humans who love, live with, and kill them. *Repeated 3 am 2/28.*
- 10:00 Last of the Summer Wine**
- 10:30 BBC World News**
- 11:00 Amanpour On PBS**
- 11:30 Beyond 100 Days**

## 27 Tuesday

- 7:00 We'll Meet Again** (TV-PG)  
*Coming Out.* Season 1, part 6 of 6. Join Ann Curry as those whose lives were changed by the early days of the gay rights movement reunite. Tom wants to find the childhood friend who urged him to come out, while Paul seeks a fellow student who inspired him to stand up for his beliefs. *Repeated 1 am 3/1; and 4 am 3/1.*
- 8:00 American Creed** (TV-PG) (SPA)  
Condoleezza Rice and David M. Kennedy cross party lines to ask what ideals we share. Stories of unlikely activists including baseball's Joe Maddon, author Junot Diaz and Marine Tegan Griffith show communities striving to come together across divides. *Repeated 2 am 3/1.*
- 9:00 Frontline**  
*Bitter Rivals: Iran and Saudi Arabia.* Part 2 of 2. A special series about how two rivals have plunged the Middle East into sectarian war. *Repeated 3 am 3/1.*
- 10:00 Last of the Summer Wine**
- 10:30 BBC World News**
- 11:00 Amanpour On PBS**
- 11:30 Beyond 100 Days**

## 28 Wednesday

- 7:00 Nature** (TV-PG) (DVS)  
*Snowbound: Animals of Winter.* Travel across the snow globe with wildlife cameraman Gordon Buchanan to meet animal survivors of winter, from the penguins of Antarctica to the Arctic fox and the bison of Yellowstone. Snow looks magical, but it's a harsh reality to these animals. *Repeated 1 am 3/2; and 4 am 3/2.*
- 8:00 Neanderthal** (TV-PG)  
Part 1 of 2. *Repeated 2 am 3/2.*
- 9:00 Neanderthal** (TV-PG)  
Part 2 of 2. *Repeated 3 am 3/2.*
- 10:00 Last of the Summer Wine**
- 10:30 BBC World News**
- 11:00 Amanpour On PBS**
- 11:30 Beyond 100 Days**

# Coming soon: Classical BTS

Fans of our 2-season web series **ART/BTS** will be thrilled to learn a new spinoff is currently in production. The new **Classical BTS** follows musicians in the classical music field as we go behind-the-scenes of their work.

Stay “tuned” for the premiere of the new season sometime this spring. And in the meantime, catch a glimpse BTS of **Classical BTS**!



▼ IPM producer Isaac Musgrave and videographer Ian Mitchell film composer Stephen Taylor as he composes at his home studio in Urbana.



▲ IPM producer Isaac Musgrave and videographers Victoria Shepherd and Ian Mitchell film yoga instructor Gwendolyn Derk and conductor Joseph Baldwin at Iyengar Yoga Urbana Champaign in Urbana.





# Burnout discovered on transmission tower

On December 1, issues with our WILL-FM 90.9 transmission line were discovered. Crews quickly came to investigate and placed a temporary repair approximately 700-800 feet up on the radio transmission tower.

Permanent repairs will take place when weather permits, a difficult task in these cold winter months! "In the interim, we will

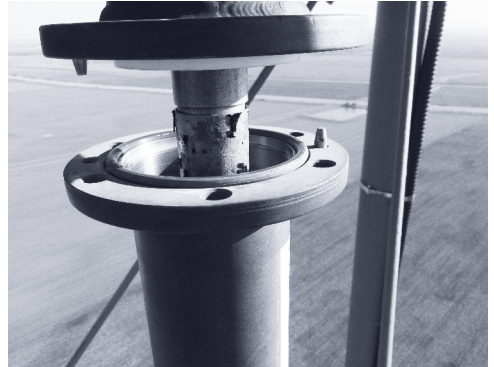
monitor the temporary repair in the FM transmission line for continued stability," says Rick Finnie, associate director of technology for IPM.

Special thanks to Rick and his crew for quickly and safely addressing the situation. We appreciate our listeners' patience as we cooperate with Mother Nature!

▼ Workers climb high above the Illinois Public Media building to investigate the WILL-FM 90.9 transmission issue.



▼ The burnout damage on the transmission line.



## Have you activated **WILL Passport** yet?

If you are a member who donates \$60 or more annually, you can activate your account and get extended access to the on-demand library of quality local and national public television programming. To activate your account, go to <http://www.pbs.org/passport/lookup/> and follow the instructions.

Passport highlights include episodes of **Masterpiece** favorites like *Victoria*, *Downton Abbey*, and *Poldark*. Plus, you can watch hundreds of hours of **Nature**, **NOVA**, **Antiques Roadshow**, **American Experience**, **Finding Your Roots**, **Rick Steves' Europe**, **The Great British Baking Show**, a rotating list of Ken Burns documentaries, and so much more.

You can watch WILL Passport and our on-demand videos on your computer,

smartphone, or tablet through our website or at [PBS.org](http://PBS.org) and within the PBS Video apps for iOS and Android smartphones and tablets. You can also access WILL Passport on Apple TV, Roku, Chromecast, with additional device platforms coming soon.

If you have any questions or need to provide us with an email address to get access, contact our Membership department at [will-membership@illinois.edu](mailto:will-membership@illinois.edu) or 800-898-1065.



## WILL | Passport

Your ticket to on-demand access to the very best in arts, culture, and drama from WILL-TV & PBS



Illinois Public Media™

For more information, visit [will.illinois.edu/passport](http://will.illinois.edu/passport)

# Illinois Newsroom hires Lee Gaines as new education reporter

**L**ee Gaines joins the IPM staff as our new education reporter. Gaines, originally from Newport, RI, lived in Chicago for five years and worked as a freelance reporter before moving to Champaign-Urbana. “I wrote many articles for the *Chicago Tribune*, the *Chicago Reader*, and *Chicago* magazine. I also was a fellow for City Bureau, a nonprofit that works to train journalists and provide better coverage for the south and west sides of Chicago.”

It’s her work through City Bureau that influenced Gaines’ reporting style. “Often reporters will parachute into these areas of Chicago when there is a tragedy, but City Bureau’s mission is to create journalism that is more reflective of the people that live there. I want to bring that same ideology to my work at WILL.”

Gaines’ interest in the educational system began in high school. “Where I grew up, the middle class was shrinking, and that was very obvious in my public school. We were surrounded by ultra-expensive private schools, and the demographics in the public school system were primarily low-income and minorities. Meanwhile, the teachers did not reflect the school’s population. I knew I was being short-changed in my education.

“I began to question why some people get amazing access to a good education and others don’t. Where you live, who you were born to, and how you look affects

Photo: Courtesy of Alexus McLane



your education. I want to closely examine these disparities while also investigating the methods used to even the playing field.”

As the Illinois Newsroom education reporter, Gaines wants to continue public radio’s reputation for reliable news. “I want to continue to be a source for the community. If people have questions, I want them to come to us and trust us to find the truth. We are here to find information and hold people accountable, to bring diverse voices into the conversation, and to push the envelope for what public radio can be.”

## We Care

Huey’s Home Medical and Aging In Place has been proudly servicing Champaign and the surrounding areas for over 12 years and we want to help you Age in Place.

## We Provide:

- Licensed Private Duty Caregivers to assist with care in a facility or private home setting
- Hospital to home discharge coordination
- Hospital to facility admission coordination
- Insurance and benefit navigation
- FREE Home Assessments



**Aging In Place**  
At Home with Huey’s

**Aging In Place ... Living life on your terms with Dignity and Grace**  
**Call or stop in today to find out more about our new services!**

217-531-HOME (4663) • [aginginplaceinc@gmail.com](mailto:aginginplaceinc@gmail.com) • 2024 Glenn Park Dr., Champaign, IL 61821

## Christine Herman joins the WILL Newsroom

Christine Herman has recently taken on a new role at WILL as a general assignment reporter. Herman, formerly a producer for IPM's **The 21st**, is eager for the new challenge. "I worked on **The 21st** for more than a year, promoting conversations around issues that affected communities across the state. Now, I will be focusing more on east-central Illinois specifically, giving me the opportunity to plug into the community on a deeper level."

Despite living in Champaign-Urbana for 10 years, Herman still feels she has a lot to learn about the area. "When I first moved here, it was for grad school, so I was very much in an academia bubble. Then family life took over. So I'm excited that in this new role, I'll have the opportunity to really get acquainted with CU residents. I look forward to the more personal approach."

For Herman, listening will be key to her reporting style. "I want to cover the issues that really matter to people in the area, and that starts with fully immersing myself in the community, taking off my reporter hat, and just listening," she says. "My aim is to serve people by both informing them about matters that affect their lives and allowing their perspectives, concerns and personal stories to really shine through."

While Herman is classified as a general assignment reporter, her background in chemical biology draws her to health and science stories. "I'll be spending a portion of my time participating in a reporting collaboration with **Side Effects**

Photo: Courtesy of Mike Thomas



**Public Media**, a health news initiative that explores the impacts of place, policy and economics on America's health," she says. "Most recently I produced a video story about one Illinois doctor's efforts to stem the tide of opioid misuse."

Herman is already having great success in her new position. "My first day, **NPR** asked the station to do a story on working outdoors in the extreme cold. I volunteered, bundled up, and hit the streets to find people at work, not knowing if **NPR** would actually use the report. But the next afternoon, it aired nationwide. Not only did it make for a really great start, but I learned a lot about the art of audio-rich, character-driven storytelling."

To listen to that report and more of Herman's work, go to [will.illinois.edu](http://will.illinois.edu).



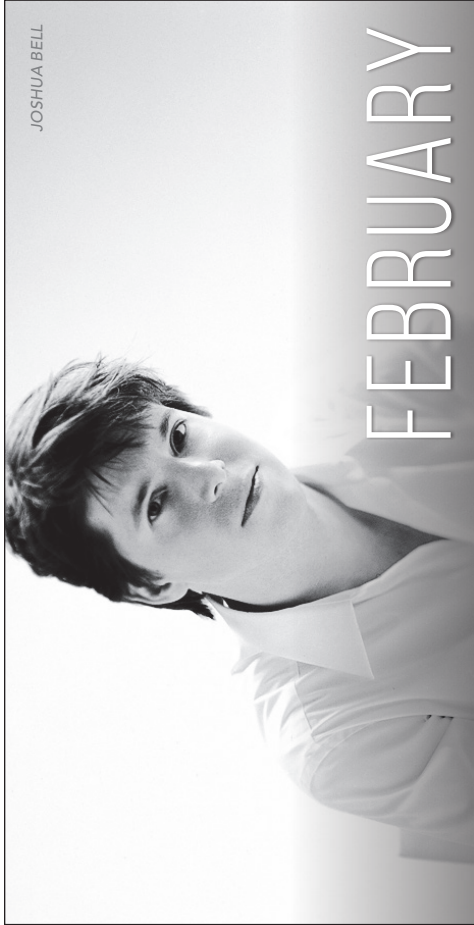
# Thank you, Program Underwriters!

Private support accounts for the largest single source of funds necessary to make Illinois Public Media and the WILL stations great resources for communities across central Illinois. We appreciate the following organizations that have stepped forward to join the individuals and families who support award-winning public media services.

A-A-A Storage  
Academy High  
Agrability  
Agribile-Morning Farm Report  
AgriGold  
Allerton Park Conference Center  
Amasong  
Archer Daniels Midland Company  
Asahel Gridley Antique Shop  
Associated Antique Dealers  
of America  
Auditory Care Center  
Baroque Artists of Champaign-  
Urbana  
Bates Commodities  
Beckman Institute  
Beef House  
Big Grove Tavern  
Birch Tree Counseling &  
Consulting LLC  
Blue Moon Farm  
Breathe Day Spa & Event Center  
Busey  
Campus Middle School  
C-U Overhead Doors Inc  
Center for Advanced Study  
Central Illinois Antique Dealers  
Association  
Central Illinois Regional Airport  
Champaign Park District/  
Virginia Theatre  
Champaign-Urbana Mass Transit  
District  
Champaign-Urbana Schools  
Foundation  
Champaign-Urbana Symphony  
Charleston Community Theater  
Cheese & Crackers  
Childrens' Museum of Indianapolis  
Chorale  
City of Urbana  
Clark-Lindsey Village  
Cline Center for Democracy  
Columbia Street Roastery  
Common Ground Food Co-op  
Community Foundation of East  
Central Illinois  
Community Shares of Illinois  
Complete Care Pharmacy  
Concierge Magazine  
Country Financial  
CU Folk and Roots Festival  
CU Woodshop

Danville Gardens, Inc.  
Danville Light Opera  
Danville Symphony Orchestra  
DTN/The Progressive Farmer  
DuPont Pioneer  
Farm Credit Services of Illinois  
Farmer City Antique Show  
Fein-Bursoni, Inc.  
First Bank (Savoy Division)  
Global Commodity Analytics &  
Consulting LLC  
Harper Community College  
Heath and Vaughn Funeral Home  
Heel to Toe  
Hendrick House  
Illini Pella Windows, Inc.  
Illini Union Ballroom  
Illinois AgriNews  
Illinois Arts Council  
Illinois Beef Association  
Illinois Corn Growers Association  
Illinois Pork Producers Association  
Illinois Program for Research in  
the Humanities  
Illinois Symphony Orchestra  
Illinois Times  
ISU School of Music  
John Phipps Law Offices PC  
Koester & Bradley, LLP  
Krannert Art Museum  
Krannert Center for the  
Performing Arts  
Landscape Recycling Center  
Levy Company  
Lincoln's Trial & Tribulations  
Little Theatre on the Square  
McKinley Church and Foundation  
Meredith Foundation  
Meyer Capel Law Office  
Mike Weaver Ballroom Dance  
Monticello Railway Museum  
Natural Gourmet  
NU-AG Seeds  
Parkland College  
Parkland College Theatre  
Pars Rug Gallery  
Patterson Office Supplies  
Paws & Remember  
Peoria International Airport  
Prairie Farmer Magazine  
Prairie Fire Glass  
Prairieland Feeds  
Preservation Emporium

Radio Maria  
Renewal by Andersen  
Rental City  
Risk Management Commodities Inc  
River Valley Metro Mass Transit  
District  
Ruedi Wealth Management  
Sangamon Auditorium, UIS  
Sew Sassy  
Silvercreek/Courier Cafe  
Sinfonia da Camera  
Sitka Salmon Shares  
Sock Club Enterprises LLC  
Sonified Sustainability Festival  
Spiros Law, P.C.  
St Joseph Apothecary  
St. John the Divine Episcopal Church  
Standard Grain, Inc.  
Stewart-Peterson Group Inc.  
Strategic Farm Marketing Inc.  
Strawberry Fields  
Subaru of Champaign  
Sweeney Brothers Fine Floorcovering  
Symphony Orchestra Guild of  
Decatur  
Syngenta Crop Protection  
Techline  
Ten Thousand Villages  
The Andersons, Inc.  
The Blindman  
The Mervis Family Foundation  
The Organization for Transformative  
Works  
These Four Walls  
TIAA Center for Farmland Research  
Todd's Wines at Art Mart  
TrophyTime  
Twin City Squared  
U of I Center for Global Studies  
U of I Department of Engineering  
U of I Department of Physics  
University Library/ Office or Library  
Advancement  
University YMCA  
USDA - Farm Service Agency  
Wesley United Methodist Church  
and Student Foundation  
Willard Airport  
World Harvest Foods  
Yoga Institute of Champaign-Urbana



JOSHUA BELL

# FEBRUARY

- |             |  |              |  |
|-------------|--|--------------|--|
| <b>1</b>    | Krannert Uncorked  | <b>9-10</b>  | Dublin Irish Dance: <i>Stepping Out</i>                  |
| <b>1-3</b>  | Illinois Theatre: <i>Assassins</i>                                 | <b>16</b>    | Dance for People with Parkinson's                        |
| <b>1-3</b>  | February Dance   | <b>17</b>    | Family Fun Free Concert:<br>Sonia De Los Santos          |
| <b>1</b>    | Joshua Bell, violin  | <b>17</b>    | Sinfonia da Camera:<br><i>An Anniversary Celebration</i> |
| <b>2</b>    | Dessert and Conversation:<br>February Dance                        | <b>22</b>    | Krannert Uncorked  |
| <b>6</b>    | Imago Theatre: <i>La Belle, Lost in the World of the Automaton</i> | <b>22-25</b> | Lyric Theatre: <i>Don Giovanni</i>                       |
| <b>7-11</b> | Illinois Theatre: <i>Assassins</i>                                 | <b>24-25</b> | Dessert and Conversation:<br><i>Don Giovanni</i>         |
| <b>8</b>    | Krannert Uncorked  |              |  |

 **krannert center**  
217.333.6280 • KRANNERTCENTER.COM

COLLEGE OF  
FINE + APPLIED  
**ARTS**



## MOVING?

Let your public broadcasting membership move with you.

Fill out the form below and send it with your address label to:  
**Friends of WILL, 300 North Goodwin Avenue, Urbana, IL 61801-2316**

**Let us know six weeks in advance of moving so that we can make the proper change.**

- ☐ Check here if you wish to remove your name from our membership list.  
☐ Please update my membership with this new address:

Name \_\_\_\_\_

Street \_\_\_\_\_

City \_\_\_\_\_ State \_\_\_\_\_ Zip \_\_\_\_\_

Phone day (    ) \_\_\_\_\_ evening (    ) \_\_\_\_\_

**Friends of WILL**  
**Campbell Hall**  
**300 North Goodwin Avenue**  
**Urbana, IL 61801-2316**

NONPROFIT  
ORGANIZATION  
U.S. POSTAGE PAID  
CHAMPAIGN, IL  
PERMIT NO. 453