

Patterns

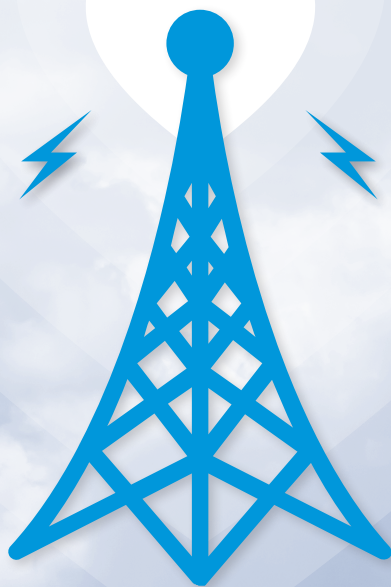
June 2019

FRIENDS OF WILL MEMBERSHIP MAGAZINE

npr



45 FRIENDS OF
1974-2019 will



Thank you, Friends!

Membership Hotline: 800-898-1065
WILL AM-FM-TV: 217-333-7300
Campbell Hall
300 N. Goodwin Ave., Urbana, IL 61801-2316

Mailing List Exchange

Donor records are proprietary and confidential.
WILL does not sell, rent or trade its donor lists.

Patterns

Friends of WILL Membership Magazine

Editor/Art Designer: Sarah Whittington

Art Director: Kurt Bielema

Printed by Premier Print Group.



Printed with SOY INK
on RECYCLED,
RECYCLABLE paper.

RADIO

90.9 FM: A mix of classical music and NPR information programs, including local news. (Also with live streaming on will.illinois.edu.)
See pages 4-5.

101.1 FM and 90.9 FM HD2: Locally produced music programs and classical music from C24. (101.1 is available in the Champaign-Urbana area.) *See page 6.*

580 AM: News and information, NPR, BBC, news, agriculture, talk shows. (Also heard on 90.9 FM HD3 with live streaming on will.illinois.edu.) *See page 7.*

TELEVISION

WILL-HD

All your favorite PBS and local programming, in high definition when available. 12.1; Contact your cable or satellite provider for channel information. *See pages 9-16.*

WILL Kids 24/7

Around the clock, award-winning children's programming. 12.2; also available on Comcast and Mediacom.

WILL Create

Cooking, travel, gardening and home improvement, arts and crafts. 12.3; also available on Comcast and Mediacom. *See page 8.*

WILL World

PBS documentaries, news and public affairs. 12.3; also available on Comcast and Mediacom. *See page 8.*

ONLINE

will.illinois.edu



[facebook.com/WILLradiotvonline](https://www.facebook.com/WILLradiotvonline)



[@willpublicmedia](https://twitter.com/willpublicmedia)



[@willpublicmedia](https://www.instagram.com/willpublicmedia)

Get Aircheck

Video previews, behind-the-scenes information, program schedule updates and more, delivered every weekend to your email inbox.

will.illinois.edu/aircheck

Patterns

June 2019 Volume XLVI, Number 12



It's the start of summer, which means that it's time to wrap up the fiscal year here at Illinois Public Media. It is also the official 45th anniversary for our Friends of WILL program, the beginning of a symbiotic relationship that has led both you and me to this very place.

For 45 years, our wonderful Friends have shown support and dedication to public media in central Illinois. In return, we've provided award-winning local journalism along with high-quality entertainment.

With our significant plans for the future, including our documentary **Illinois Country**, various events across the listening area, news reports, and other new programming, we will continue to uphold our promises to you. I ask that you too continue your role by providing the financial support necessary to fund our next fiscal year.


Public media has changed a lot since 1974, but the fundamental goal of providing for those in need remains the same. I look forward to seeing the amazing strides that we will take together as we tackle another 45 years.



Moss Bresnahan
President and CEO

Twitter: @MossILMedia



*This program is made possible
with support from the*
 friends of **will**

You hear this phrase often as you listen to WILL-AM and WILL-FM or watch WILL-TV. But have you wondered just how the Friends of WILL came to be? On page 2, former Development Director Debbie Day takes us back to 1974, when WILL recognized a need for community ownership in its public media, and how the bond forged then has sustained WILL for 45 years.





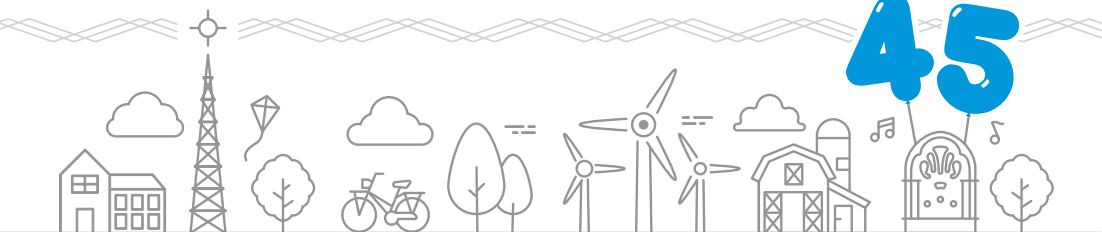
We're thrilled to be celebrating
45 years of the Friends of WILL!



In early 1974, a group of community members sat around a table in the old WILL-Radio studios on the second floor of Gregory Hall on the UIUC campus. They shared with Don Mullally, the recently appointed director of broadcasting, their ideas about ways the WILL listeners and viewers could help the stations expand and enrich their services. The focus was on the need for additional funding and the possibility of appealing directly to WILL's audience for financial and volunteer support. Someone suggested calling those who responded the Friends of WILL.

And respond they did! Later that year, volunteers helped organize the first over-the-air pledge drive and answered pledge phones set up in the Gregory Hall office hallway. They helped process the contributions and put mailing labels on the monthly issues of *Patterns*. Two more pledge drives were held that year, and volunteers cheerfully chatted with donors and provided enthusiastic encouragement to staff.





Through these 45 years, the vital Friends of WILL annual financial support has grown from \$64,000 to more than \$2,200,000. Many made very special gifts to complete the funding of Campbell Hall. And hundreds of Friends of WILL volunteers have provided their energy, creative ideas, and special talents in so many ways. They have helped organize and run special events, been spokespeople on and off the air, served on the Community Advisory board, read books to preschoolers as part of the WILL Book Mentor program, given station tours, and for many years were the mainstay of pledge drives.

Thank you, Friends of WILL, for all you have done and continue to do for your public broadcasting stations.

— Debbie Day, Friend of WILL
and former Director of Development



The Friends of WILL have helped with pledge drives, concerts in the park, vintage vinyl resale events, and were key to the creation and dedication of Friends Plaza at Campbell Hall for Public Telecommunication.

WEEKDAYS

6 am

NPR Morning Edition

with Steve Inskeep, Rachel Martin, David Greene, and Noel King

9 am

Classic Mornings with Vic Di Geronimo
Celebrating its 10th year!

Join Vic for music and companionship and make each morning a classic morning!

Noon

Afternoon Classics

NPR News Headlines at 12:01, 1:01, and 3:01.

5 pm

NPR All Things Considered

with Ailsa Chang, Audie Cornish, Mary Louise Kelly, and Ari Shapiro

7 pm

The Evening Concert

Great performances from the great concert venues. Also on Sundays from 7-9 pm. Listings are subject to change.

Monday:

The New York Philharmonic This Week

- 6/3 **Gergiev conducts Stravinsky**
Stravinsky: Renard
Alexander Timchenko, tenor
Stravinsky: The Soldier's Tale
Alec Baldwin: Narrator
- 6/10 **Mozart, Hersch, and Tan Dun**
Mozart: Concerto for Flute & Orchestra No. 2
Tan Dun: Concerto for Water Percussion
Hersch: Selection(s) from Of Sorrow Born
Mozart: Clarinet Concerto
Rouse: Flute Concerto
- 6/17 **Bernstein and the Mahler Revival**
Mahler: Symphony No. 4 in G Major
Reri Grist, soprano
Mahler: Adagio from Symphony No. 10
- 6/24 **Philharmonic Firsts!**
Dvořák: Symphony No 9
Copland: Connotations for Orchestra
Corigliano: Clarinet Concerto
Carter: A Symphony of Three Orchestras

Tuesday:

Chicago Symphony Orchestra

- 6/4 **Barenboim conducts Smetana**
Smetana: Vyšehrad
Smetana: Vltava (Moldau)
Smetana: Šárka
Smetana: Tábor
Smetana: Blaník
- 6/11 **Sir Mark Elder conducts English Music**
Vaughan Williams: Overture to The Wasps
Vaughan Williams: 5 Variants of Dives & Lazarus
Elgar: Symphony No. 1 in A-flat Major, Op. 55
- 6/18 **Muti conducts Shostakovich's Babi Yar**
Shostakovich: Symphony No. 13, Op. 113
"Babi Yar"
Alexey Tikhomirov, bass
Men of the Chicago Symphony Chorus
George Walker: Lyric for Strings

6/25 **Muti conducts Schubert's Mass in E-flat Major**

Schubert: Mass No. 6 in E-flat Major, D.950
Chicago Symphony Chorus
Duain Wolfe, director
Amanda Forsythe, soprano
Elizabeth Deshong, mezzo-soprano
Paul Appleby, tenor
Nicholas Phan, tenor
Nahuel di Pierro, bass

Wednesday:

San Francisco Symphony

- 6/5 Conductor: Michael Tilson Thomas
Behzod Abduraimov, piano
Wuorinen: Sudden Changes (SFS Commission, world premiere)
Prokofiev: Piano Concerto No. 3 in C Major
Copland: Symphony No. 3
- 6/12 Conductor: Michael Tilson Thomas
Gil Shaham, violin
Berg: Violin Concerto
Mahler: Symphony No. 5 in C-sharp Minor
- 6/19 Conductor: Michael Tilson Thomas
Daniil Trifonov, piano
Sibelius: Symphony No. 6, Op. 104
Sibelius: Symphony No. 7 in C Major, Op. 105
Rachmaninoff: Piano Concerto No. 3 in D Minor
- 6/26 Conductor: Michael Tilson Thomas
Sasha Cooke, soprano
Pacific Boy Choir
Women of the SFS Chorus
Mahler: Symphony No. 3 in D Major

Thursday:

Deutsche Welle Festival Concerts

- 6/6 **Schumann concerto**
Carolyn Widmann, violin
Berlin Radio Symphony Orchestra
Dima Slobodeniouk, conductor
Schumann: Violin Concerto in D Minor
Beethoven: Symphony No. 2 in D Major
- 6/13 **Kopatschinskaja**
Patricia Kopatschinskaja, violin & conductor
Camerata Bern
Zorn: Kol Nidre for string quartet
Martin: Polyptyque—Six Images on the Passion of Christ
- 6/20 **Haydn Festival**
Concerto Köln
Markus Hoffmann, conductor
Haydn: Symphony No. 34 in D Minor
Haydn: Symphony No. 49 in F Minor (La Passione)
- 6/27 **Baltic Sea**
Baltic Sea Philharmonic
Kristjan Järvi, conductor
Wojciech Kilar: Orawa
Arvo Pärt: Fratres

Friday:

Prairie Performances

Concerts are subject to availability.

- 6/7 Champaign-Urbana Symphony Orchestra
Stephen Alltop, conductor
"Music of Destiny" (03/20/18)
Garrop: Mythology Symphony
III. The Lovely Sirens
IV. The Fates of Man
V. Pandora Undone
Mendelssohn: Violin Concerto in E Minor, Op. 64
Beethoven: Symphony No. 5 in C Minor

- 6/14 Champaign-Urbana Symphony Orchestra
Stephen Alltop, conductor
"Music of Titans" (04/28/18)
Sun Chang, piano
Garrop: Mythology Symphony
I. Becoming Medusa
Mozart: Piano Concerto No. 14 in E-flat Major, K. 449
Mahler: Symphony No. 1, "Titan"
- 6/21 Champaign-Urbana Symphony Orchestra
Stephen Alltop, conductor
"All the World's a Stage" (01/26/19)
Carol Cook, viola
Rossini: The Barber of Seville Overture
Schubert: Symphony No. 5 in B-flat Major, D. 485
Garrop: Krakatoa
Stravinsky: Pulcinella Suite
- 6/28 Champaign-Urbana Symphony Orchestra
Stephen Alltop, conductor
"Terra Nostra: An Oratorio About Our Planet" (03/09/19)
University of Illinois Oratorio Society
Central Illinois Children's Chorus
Sarah Gartshore, soprano
Meg Bragle, mezzo-soprano
Steven Soph, tenor
David Govertsen, bass
Garrop: Terra Nostra

9 pm**Night Music**

Gillian Martin, Bob Christiansen, Ward Jacobson, or Scott Blankenship keep you company through the night and into the morning. **NPR News Headlines** at 9:01.

SATURDAYS**7 am****NPR Weekend Edition**

with Scott Simon

9 am**Classics By Request**

Submit requests to Vincent Trauth at classreq@illinois.edu or **217-265-5064**.

11 am**Classics of the Phonograph**

John Frayne's weekly exploration of memorable recordings from the 20th century.

- 6/1 Mussorgsky's Pictures at an Exhibition, Picture by Picture
6/8 Winners of the Van Cliburn Award
6/15 The Art of Conducting: Arthur Nikisch, Felix Weingartner, and Richard Strauss
6/22 The Career of Pianist Evgeny Kissin
6/31 The Also Serve: Chorus Director Joseph Flummerfelt

Noon**Afternoon at the Opera**

This month the WFMT Opera Series continues with performances from the Royal Opera House in London.

- 6/1 Die Walküre (Wagner). Antonio Pappano, cond. with Stuart Skelton (Siegmund), Emily Magee (Sieglinde), John Lundgren (Wotan), Nina Stemme (Brünnhilde), Sarah Connolly (Frika), Ain Anger (Hunding), and the Royal Opera House ensemble.
6/8 Siegfried (Wagner). Antonio Pappano, cond., with Stefan Vinke (Siegfried), Nina Stemme (Brünnhilde), Gerhard Siegel (Mime), John Lundgren (The Wanderer), Johannes-Martin Kränzle (Alberich), Brindley Sherratt (Fafner), Wiebke Lehmkuhl (Erda), and the Royal Opera House ensemble.

- 6/15 Simon Boccanegra (Verdi). Henrik Nánási, cond., with Carlos Álvarez (Simon), Ferruccio Furlanetto, (Jacopo), Hrachuhi Bassenz (Amelia), Francesco Meli (Gabriele), Mark Rucker (Paolo), and the Royal Opera House ensemble.
6/22 The Queen of Spades (Tchaikovsky). Antonio Pappano, cond., with Aleksandrs Antonenko (Herman), Vladimir Stoyanov (Prince Yeletsy), Eva-Maria Westbroek (Lisa), Felicity Palmer (Countess), John Lundgren (Count Tomsy), and the Royal Opera House ensemble.
6/29 La Forza del Destino (Verdi). Antonio Pappano, cond., with Anna Netrebko (Leonora), Jonas Kaufmann (Don Alvaro), Ludovic Tézier (Don Carlos), Ferruccio Furlanetto (Padre Guardiano), Alessandro Corbelli (Fra Melitone), Veronica Simeoni (Preziosilla), and the Royal Opera House ensemble.

4 pm**NPR All Things Considered**

with Michel Martin

5 pm**Performance Today Weekend**

Host Fred Child presents a two-hour weekly program that features classical music in concert from American Public Media studios and sites across the nation and around the world, as well as classical music news, interviews and features. **[Also Sundays at 2 pm]**

7 pm**The Midnight Special**

Rich Warren presents folk music and farce, show tunes and satire, traditional and contemporary with gentle irreverence and candid observation.

9 pm**American Parlor Songbook**

JP Houston and Julie Van Dusen feature clever songs, charming stories, and hilarious sketches every week.

NPR News Headlines at 9:01.

10 pm**Classics All Night**

NPR News Headlines at 10:01

SUNDAYS**7 am****NPR Weekend Edition**

with Lulu Garcia-Navarro

9 am**Sunday Baroque**

NPR News Headlines at 9:01 and 10:01.

1 pm**The Record Shelf****2 pm****Performance Today Weekend****4 pm****NPR All Things Considered**

with Michel Martin

WEEKDAYS

6–9 am

Classical Music

9 am–noon

Classic Mornings with Vic Di Geronimo

Join Vic for music and companionship and make each morning a classic morning!

Noon–overnight

Classical Music

Friday 7-9 pm

Prairie Performances

Roger Cooper presents regional concerts throughout the WILL listening area.

SATURDAYS

7–9 a

Classical Music

9–11 am

Classics by Request

Vincent Trauth plays requests at this time each Saturday. Submit requests at classreq@illinois.edu or 217-265-5064.

11 am–noon

Classics of the Phonograph

John Frayne's weekly exploration of memorable recordings from the 20th century. See page 5 for listings.

Noon–4 pm

Afternoon at the Opera

Complete opera broadcasts followed, time-permitting, by opera previews and excerpts with host John Frayne.

Noon–overnight

Classical Music

SUNDAYS

All day

Classical Music



Programs on WILL Radio are partially sponsored by a grant from the Illinois Arts Council, a state agency.

5 pm

Classical Music

7-8 pm

The Evening Concert

The Chamber Music Society of Lincoln Center

- 6/2 **Extreme Piano Trios**
Smetana: Trio in G Minor for Piano, Violin, and Cello, Op. 15
Babadjanian: Trio in F-sharp Minor for Piano, Violin, and Cello
- 6/9 **Variations**
Grieg: Sonata in A Minor for Cello and Piano
Jakob Koranyi, cello
Juho Pohjonen, piano
Bartók: Quartet No. 2 for Strings, BB 75, Op. 17
Schumann Quartet
- 6/16 **Virtuosity II: Duos**
Saint-Saëns: Sonata No. 1 in D Minor for Violin and Piano, Op. 75
Elmar Oliveira, violin
Juho Pohjonen, piano
- 6/23 **Featured Musicians**
Mozart: Concerto in D Minor for Piano and Strings, K. 466 (arr. Carl Czerny)
- 6/30 **Uneasy Friendships**
Zemlinsky: Quartet No. 3 for Strings, Op. 19
Schoenberg: Kammer-symphonie, arranged for Flute, Clarinet, Violin, Cello, and Piano, Op. 9

8-9 pm

The Evening Concert

Santa Fe Chamber Music Festival

- 6/2 Ravel: Introduction & Allegro for Harp, Flute, Clarinet & String Quartet (1905)
Beethoven: Septet in E-flat Major, Op. 20 (1799)
Walter Braunfels: String Quintet in F-sharp Minor, Op. 63 (1944-45)
- 6/9 Beethoven: Piano Trio in D Major, Op. 70, No. 1, "Ghost" (1808)
Brahms: Piano Trio in C Minor, Op. 101 (1886)
- 6/16 Fauré: Piano Quartet No. 1 in C Minor, Op. 15
Simon Crawford-Phillips, piano
Alan Gilbert, violin
Manabu Suzuki, viola
Eric Kim, cello
- 6/23 Dvořák: String Quintet in E-flat Major, Op. 97
Joel Link, Bryan Lee, violins
Milena Pajaro-van de Stadt, Hsin-Yun Huang, violas
Camden Shaw, cello
- 6/30 Brahms: Selections from Waltzes for Piano, Four Hands, Op. 39
Schubert: Fantasy in C Major for Violin & Piano, D. 934
Daniel Phillips, violin
Haochen Zhang, piano

9 pm

Classical Music

10 pm

Harmonia

Angela Mariani presents Baroque and early music.
NPR News Headlines at 10:01.

11 pm

The Romantic Hours

Music, poetry and romance with Mona Golabek.

midnight

Classical Music

Monday - Friday			Saturday	Sunday
NPR Morning Edition with Brian Moline		5:00	BBC Overnight Continued	BBC World Service
		6:00	Commodity Week	Inside Europe
		6:30	State Week in Review	
		7:00	NPR Weekend Edition	NPR Weekend Edition
1A		9:00	The Splendid Table	It's Been A Minute with Sam Sanders
		10:00	Wait Wait ... Don't Tell Me	
The 21st with Niala Boodhoo	Statewide (F)	11:00	Ask Me Another	Says You
Here & Now with Jason Croft		Noon	This American Life	Wait, Wait ... Don't Tell Me
		1:00	The Moth Radio Hour	The Treatment
		1:30		State Week in Review
The Closing Market Report		2:00	Radiolab	Reveal
BBC Newshour	Commodity Week (F)	2:30		
Fresh Air		3:00	TED Radio Hour	On the Media
All Things Considered with Steve Morck		4:00	All Things Considered	All Things Considered
		5:00	Science Friday	The People's Pharmacy
		6:00	Big Picture Science	Travel with Rick Steves
The 21st (repeat)	Statewide (F) (repeat)	7:00	Living on Earth	To the Best of Our Knowledge
Fresh Air (repeat)		8:00		
BBC World Service	Science Friday (F)	9:00	Alternative Radio	New Dimensions
		10:00	Commonwealth Club	Le Show
		11:00	Left, Right, and Center	BBC World Service
		12:00- 5 am	BBC World Service	

Bold Listing = National/International News



AGRICULTURE

Todd Gleason, host, Closing Market Report & Commodity Week

Opening Market Report: 8:55 am; Market Update: 10:58; Midday Market Report: 12:58 pm;
Closing Market Report: 2:06 pm. Fridays: Commodity Week: 2:30 pm; Grain Market Summary: 4:32 pm.
To listen to archived ag reports, sign up for the Illinois Public Media Ag E-newsletter,
or download our agricultural podcasts, visit www.willag.org



ILLINOIS PUBLIC MEDIA NEWS

Brian Moline, managing editor, Illinois Public Media

The news from Illinois Public Media's award-winning staff of reporters, hosts, and producers—Niala Boodhoo, Anna Casey, Libby Foster, Lee Gaines, Christine Herman, Robin Linn, Jim Meadows, Brian Moline, and Alan Montecillo—can be heard during **Morning Edition**, **The 21st**, **Here & Now**, and **All Things Considered**.



WEATHER

MONDAY-FRIDAY

Weather forecasts from meteorologist Andrew Pritchard throughout the day.S

Arts and Crafts—5-6 am; 11 am-noon

Sun: Knit and Crochet Now!; Painting and Travel with Roger and Sarah Bansemmer/Grand View (begins 6/9)

Wed: Knit and Crochet Now!; Painting with Wilson Bickford

Mon: Quilting Arts; Paint This with Jerry Yarnell

Fri: Fons and Porter's Love of Quilting; Paint This with Jerry Yarnell

Tue: Best of Sewing with Nancy; Best of the Joy of Painting

Thu: It's Sew Easy; Best of the Joy of Painting

Cooking—6-8 am; noon-2 pm

Sun and Wed: Lucky Chow; Ciao Italia; Baking with Julia; Joanne Weir's Plates and Places

Mon: Mike Colameco's Real Food; New Orleans Cooking with Kevin Belton; Jazzy Vegetarian; Iowa Ingredients

Fri: Mike Colameco's Real Food; New Orleans Cooking with Kevin Belton; Jazzy Vegetarian; Healthful Indian Flavors with Alamelu

Tue: P. Allen Smith's Garden to Table; Mexico-One Plate at a Time; Dining with the Chef; Primal Grill

Thur: P. Allen Smith's Garden to Table; Mexico-One Plate at a Time; Yan Can Cook: Spice Kingdom; Primal Grill

Travel—8-9 am; 2-3 pm

Sun: Trails to Oishii Tokyo; Journeys in Japan

Wed: Smart Travels-Europe with Rudy Maxa; Dream of Italy

Mon: Mississippi Roads; Joseph Rosendo's Travelscope

Fri: Bare Feet with Mickela Mallozzi; Joseph Rosendo's Travelscope

Tue and Thu: Family Travel with Colleen Kelly; Travels with Darley

Gardening/Home Improvement—9-11 am

Mon: This Old House; American Woodshop; P. Allen Smith's Garden Home; Beads, Baubles, and Jewels

Fri: This Old House; American Woodshop; P. Allen Smith's Garden Home; Visionkeepers

Tue and Thu: Rough Cut with Fine Woodworking: Craftsman's Legacy; Woodsmith Shop; Growing a Greener World; Baby Makes 3

Wed and Sun: Ask This Old House; Woodwright's Shop; Garden Smart; Make 48

Weekend Marathons—5-11 am Saturday;

11 am-5 pm Sunday

June 1/2: Backyard Makeover

Dress up your backyard for the whole family.

June 8/9: Create Mash-up

Great hosts come together to make magic.

June 15/16: Men of Leisure

Join the Create men for a lovely Father's Day.

June 22/23: Dining Al Fresco

Take your summer meals outside.

June 29/30: ATK Grills

Prepare for your 4th of July barbecue!

Monday-Friday

9:00 PBS NewsHour

10:00 Nightly Business Report

10:30 The Day

Mondays

7:00 To a More Perfect Union (6/10); Local USA (6/17)

7:30 The Committee

8:00 Living in the Overlap (6/10); Penny: Champion of the Marginalized (6/17); Bright Lights Little City (6/24)

8:30 Stories from the Stage

11:00 Forever Painless with Miranda Esmonde-White (6/3); Reel South (6/10); Independent Lens: Real Boy (6/17); The Day It Snowed In Miami (6/24)

Tuesdays

7:00 Personal Statement: America Reframed (6/4); America ReFramed (6/11, 6/18, 6/25)

8:00 Forever Painless with Miranda Esmonde White (6/4)

8:30 First Degree (6/11); Nine to Ninety (6/18); The Committee (6/25)

11:00 Personal Statement: America Reframed (6/4); America ReFramed (6/11, 6/18, 6/25)

Wednesdays

7:00 American Experience: Stonewall Uprising (6/5)

8:00 Frontline (6/12, 6/19, 6/26)

11:00 American Experience: Stonewall Uprising (6/5); POV: From This Day Forward (6/12); POV: Roll Red Roll (6/19); POV: The Gospel of Eureka (6/26)

Thursdays

7:00 Operation Man eater (6/13); John Glenn: A Life of Service (6/27)

8:00 Aging Backwards 2 (6/6); Secrets of the Dead (6/13, 6/20, 6/27)

11:00 Henry Louis Gates, Jr.-Uncovering America (6/6); NOVA (6/13, 6/27); When Whales Walked: Journeys In Deep Time (6/20)

Fridays

7:00 Denial: The Dad that Wanted to Save the World (6/14); Lavender Scare (6/21)

7:47 African Americans: Many Rivers to Cross (6/7)

8:00 We'll Meet Again (6/14); Coming Out: A 50 Year

History (6/21); Reaching West: Dreams of China's New Generation (6/28)

11:00 African Americans: Many Rivers to Cross (6/7); POV: Memories of a Penitent Heart (6/14); Anyone and Everyone (6/21); Tiananmen: The People Versus The Party (6/28)

Saturdays

7:00 American Masters: Terrence McNally (6/15); Stories from the Stage (6/22); American Masters: Sammy Davis, Jr. (6/29)

7:19 African Americans: Many Rivers to Cross (6/8)

7:30 Stories from the Stage (6/22)

8:00 Stories from the Stage (6/22)

8:30 The Committee (6/15); Stories from the Stage (6/22)

9:00 America Reframed (6/1, 6/15, 6/29); Personal Statement: America Reframed (6/8); Stories from the Stage (6/22)

9:30 Stories from the Stage (6/22)

10:00 Forever Painless with Miranda Esmonde-White (6/8); Stories from the Stage (6/22)

10:30 The Last Ring Home (6/1); First Degree (6/15); Stories from the Stage (6/22); The Committee (6/29)

11:00 Monrovia, Indiana (6/1); African Americans: Many Rivers to Cross (6/8); American Masters: Terrence McNally (6/15); Stories from the Stage (6/22); American Masters: Sammy Davis, Jr. (6/29)

11:30 Stories from the Stage (6/22)

Sundays

7:00 Ken Burns: The National Parks (6/9); Nature (6/16); Rivers of Life (6/23, 6/30)

8:00 Reel South (6/2, 6/16); American Masters: Robert Shaw (6/23); Pacific Heartbeat (6/30)

8:30 Henry Louis Gates, Jr.-Uncovering America (6/9)

9:00 Henry Louis Gates, Jr.-Uncovering America (6/2); Doc World (6/16, 6/30); Considering Matthew Shepard (6/23)

10:00 PBS Previews: Chasing The Moon (6/9); To a More Perfect Union (6/16); Independent Lens: Real Boy (6/23); Reaching West: Dreams of China's New Generation (6/30)

11:00 Koko-The Gorilla Who Talks (6/2); Aging Backwards 2 (6/9); Nature (6/16); Rivers of Life (6/23, 6/30)

Monday - Friday		Saturday	Sunday
Newsline	5:00	Mister Rogers' Neighborhood	Mister Rogers' Neighborhood
Body Electric (M,W,F) Sit and Be Fit (T, Th)	5:30	Splash and Bubbles	Splash and Bubbles
Ready Jet Go!	6:00	Sesame Street	Sesame Street
Wild Kratts	6:30	Daniel Tiger's Neighborhood	Daniel Tiger's Neighborhood
Nature Cat	7:00	Pinkalicious & Peterrific	Pinkalicious & Peterrific
Curious George	7:30	Curious George	Curious George
Let's Go Luna!	8:00	Let's Go Luna!	Let's Go Luna!
Daniel Tiger's Neighborhood	8:30	Nature Cat	Nature Cat
Daniel Tiger's Neighborhood	9:00	Ready Jet Go!	Ready Jet Go!
Pinkalicious & Peterrific	9:30	Wild Kratts	Cyberchase
Sesame Street	10:00	Motorweek	Consuelo Mack Wealthtrack
Splash and Bubbles	10:30	America's Heartland	To the Contrary
Dinosaur Train	11:00	Mid-American Gardener	Firing Line with Margaret Hoover
The Cat in the Hat	11:30	J. Schwanke's Life in Bloom	Market to Market
Sesame Street	Noon	America's Test Kitchen	6/2 12:00 Day of Days: June 6, 1944 1:00 D-Day at Pointe-Du-Hoc 2:00 Golden Apple Awards for Excellence in Teaching 6/9 12-8 Masterpiece Classic: Les Miserables 6/16 12:00 PBS Previews: Chasing the Moon 1:00 Magic Moments: The Best of 50s Pop 3:00 Doobie Brothers: Live from the Beacon Theatre 4:30 Story Songs 6:00 Downton Abbey Returns! 6/23 12:00 Great Performances at the Met: Carmen 6/30 12-3 Pacific Heartbeat
Super Why!	12:30	Cook's Country	
Sewing Programs M: Fons & Porter's Love of Quilting Tu: Sewing with Nancy W: It's Sew Easy Th: Fit 2 Stitch F: Quilting Arts	1:00	Mexico-One Plate at a Time with Rick Bayless	
Painting and How To Programs M: Classic Wordworking Tu: Paint This with Jerry Yarnell W: Painting with Paulson Th: Garden Smart F: Ask This Old House	1:30	Martha Bakes	
Nature Cat	2:00	Simply Ming	The Great British Baking Show
Wild Kratts	2:30	Dining with the Chef	
Arthur	3:00	Lidia's Kitchen	
Odd Squad	3:30	Weekends with Yankee	
Odd Squad	4:00	This Old House Hour	Focus On Europe
DW News	4:30		Global 3000
BBC World News	5:00	PBS NewsHour Weekend	PBS NewsHour Weekend
Nightly Business Report	5:30	Rick Steves' Europe	BBC Newsnight
PBS NewsHour	6:00	Antiques Roadshow	Shakespeare & Hathaway- Private Investigators

WILL Kids 24/7 on 12.2

For the full WILL Kids 24/7 schedule,
go to www.illinois.edu/tv/schedule



See the full Create & World schedules
at will.illinois.edu/tv/schedule

Get *Downton Abbey* movie ready!



In anticipation of the September 2019 premiere of the upcoming feature film *Downton Abbey*, **Downton Abbey Returns!** is a nostalgic celebration of all aspects of the most successful British drama ever. **Downton Abbey Returns!** features new interviews with

the cast of the series, writer/creator Julian Fellowes and executive producer Gareth Neame, and exclusive sneak peeks from the upcoming movie based on the PBS hit series throughout the program. The special airs at 8 pm Saturday, June 8.

Evangelical Christians and Drag Queens



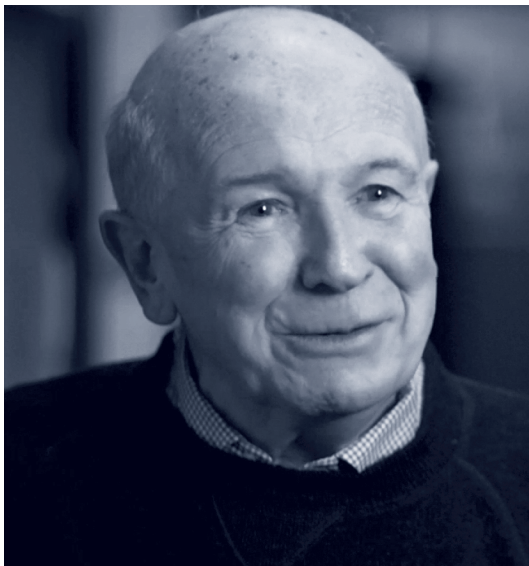
The spotlight is beaming on drag shows and a passion play in a small Arkansas town. *The Gospel of Eureka* takes a personal and often comical look at negotiating differences between religion and belief through performance, political action, and partnership.

With verve, humor and unfailing compassion, Michael Palmieri and Donal Mosher build unexpected bridges between religious faith and sexual orientation. This film from **POV** airs at 9 pm Monday, June 24.



Party like it's 1999

Originally broadcast at the end of 1999 (a fitting year), **Rave Un2 The Year 2000** showcases Prince's legendary musical talent and peerless showmanship as he guided fans from one millennium to another. Recorded at Paisley Park Studios just outside Prince's home base of Minneapolis, this dazzling show features performances of his timeless hits ("Let's Go Crazy," "Kiss," "Purple Rain," "1999") and fan favorites ("She's Always In My Hair," "Nothing Compares 2 U"). It's all backed by a second-to-none band featuring bassist Larry Graham of Sly & The Family Stone. **Prince: Rave Un2 The Year 2000** airs at 10 pm Saturday, June 8.



Love! Valour! Compassion!

Playwright, librettist, scriptwriter, and outspoken LGBTQ activist Terrence McNally has long believed in the power of the arts to transform society and make a difference. The new documentary **American Masters – Terrence McNally: Every Act of Life** premieres at 8 pm Friday, June 14. In addition to new interviews with McNally, the film features insights from his friends, his family and some of the most notable stars of stage and screen who he has worked with and mentored.

Endeavour returns for season six

Shaun Evans returns as DS Endeavour Morse in season 6 of the detective drama **Endeavour**. Presented by **Masterpiece Mystery**, the latest installment of Endeavour is set in 1969. This season, beginning at 8 pm Sunday, June 16, finds Morse in a new role as a uniformed officer at the Woodstock police department and embracing the fashion of the period by growing a moustache. But will he find his feet in this new world?





On pledge drive days with this symbol,
program start and end times may vary.

1 Saturday

- 7:00 Mum** (TV-PG)
December.
- 7:30 Still Open All Hours** (TV-PG)
- 8:00 Masterpiece Classic** (TV-PG) (DVS)
Downton Abbey. Season 3, part 2 of 8. The long-awaited engagement of Lady Mary and Matthew is on.
- 9:00 Masterpiece Classic** (TV-PG) (DVS)
Downton Abbey. Season 3, part 3 of 8. A mysterious conspiracy keeps Anna and Bates apart.
- 10:00 Red Dwarf**
- 10:32 Austin City Limits** (TV-PG)
Jason Isbell & The 400 Unit/Amanda Shires. Savor the best in Americana with Jason Isbell and Amanda Shires.
- 11:30 State & Water**

2 Sunday

- 7:00 Masterpiece Mystery** (TV-14) (DVS)
Endeavour. *Colours.* Season 5, part 4 of 6. A photoshoot on an army base turns sinister when a model is found dead.
- 8:30 Masterpiece Mystery** (TV-14) (DVS)
Endeavour. *Quartet.* Season 5, part 5 of 6. The investigation of an assassination attempt is quickly brought to an unexpected end.
- 10:00 Professor T** (TV-14)
The Inspection. Season 1, part 3 of 13. The murder of a chairwoman shocks the campus.
- 11:00 Sun Studio Sessions** (TV-G)
Chad Elliott & The Redemption. Chad and his band display their dynamic musical prowess on.
- 11:30 Film School Shorts** (TV-PG)
Missing Pieces. Explore loss and longing with an opinionated 6-year-old trying to understand change in *Memories of the Sea*, and follow a woman cleaning out her deceased partner's summer home in *Still*.

3 Monday

- 7:00 Antiques Roadshow** (TV-G)
Biloxi, Miss. Part 3 of 3. Highlights include a suit worn by Olivia de Havilland; a circa 1890 French industrial clock; and four 1827 watercolor portraits attributed to "The Guilford Limner." *Repeated 1 am 6/5; and 3 am 6/8.*
- 8:00 Antiques Roadshow** (TV-G)
San Diego, Cal. Part 1 of 3. Highlights include an original, handwritten draft of the 1933 popular American song "Stormy Weather," recorded by the likes of Lena Horne, Frank Sinatra, and Ella Fitzgerald; and an heirloom circa 1864 Tiffany cameo complete with a collection of authentic period jewelry. *Repeated 2 am 6/5.*

- 9:00 Independent Lens** (TV-PG)
TRAPPED. Go inside the contentious issue of abortion rights through the story of health care providers and others in Texas, Mississippi and Alabama who are fighting against controversial new TRAP laws that are closing clinics. *Repeated 3 am 6/5.*

10:30 Amanpour and Company

11:30 BBC World News

4 Tuesday

- 7:00 Greeks** (TV-PG)
Cavemen to Kings. Part 1 of 3. Uncover the first draft of Western civilization which laid the groundwork for the revolution in human thought that was to come. *Repeated 1 am 6/6; and 4 am 6/6.*
- 8:00 Greeks** (TV-PG)
The Good Strife. Part 2 of 3. Watch as ancient Greeks strive for excellence, and it's not long before the rising civilization and all that it promises will face its gravest tests. *Repeated 2 am 6/6.*
- 9:00 Greeks** (TV-PG)
Chasing Greatness. Part 3 of 3. Watch as ancient Greece's legacy is invoked in Athens and at the steps of the US Supreme Court. *Repeated 3 am 6/6.*
- 10:00 Detectorists** (TV-PG)
- 10:30 Amanpour and Company**
- 11:30 BBC World News**

5 Wednesday

- 7:00 Nature** (TV-PG) (DVS)
My Congo. Cameraman Vianet Djengué returns to the Congo to reveal the beauty and majesty of his homeland. *Repeated 1 am 6/7; and 4 am 6/7.*
- 8:00 NOVA** (TV-PG)
The Impossible Flight. Follow two intrepid pilots as they take on the greatest aviation adventure of our time, overcoming countless challenges as they construct and fly the first solar-powered airplane around the world. *Repeated 2 am 6/7.*
- 10:00 Still Open All Hours** (TV-PG)
- 10:30 Amanpour and Company**
- 11:30 BBC World News**

6 Thursday

- 7:00 Mid-American Gardener** (TV-G)
Repeated 11 am 6/8.
- 7:30 Ask This Old House** (TV-G)
Paint Metal Railing, Wine Rack. *Repeated 1:30 pm 6/7.*
- 8:00 Shakespeare & Hathaway-Private Investigators** (TV-PG)
The Fairest Show Means The Most Deceit. Season 1, part 7 of 10. At the detective agency, Frank is ambushed by larger than life American, Martin.
- 9:00 Father Brown**
The Darkest Noon. Season 7, part 5 of 10. Father Brown is called to Spencer Hall.
- 10:00 Trollied**
- 10:30 Amanpour and Company**
- 11:30 BBC World News**

7 Friday

- 7:00 Washington Week**
- 7:30 Firing Line with Margaret Hoover**
- 8:00 American Masters (TV-PG) (DVS)**
Lorraine Hansberry. Explore the life and work of the A Raisin in the Sun playwright and activist. *Repeated 2 am 6/9.*
- 10:00 Upstart Crow (TV-PG)**
The Most Unkindest Cut of All. Will has decided to write a play about the life of Julius Caesar.
- 10:30 Amanpour and Company**
- 11:30 BBC World News**

8 Saturday

- 6:30 Story Songs (My Music)**
 From the 50s, 60s and 70s, story songs helped us unite through our shared experiences. *Repeated 11:30 pm; and 4:30 pm 6/16.*
- 8:00 Downton Abbey Returns**
 See article on page 10. *Repeated*
- 10:00 Prince: Rave Un2 The Year 2000**
 See article on page 11.
- 11:30 Story Songs (My Music)**
 From the 50s, 60s and 70s, story songs helped us unite through our shared experiences. *Repeated 4:30 pm 6/16.*

9 Sunday

- 8:00 Masterpiece Mystery (TV-14)**
Endeavour. Icarus. Season 5, part 6 of 6. After a teacher mysteriously disappears, Endeavour goes undercover. *Repeated midnight.*
- 10:00 Downton Abbey Returns**
 See article on page 10.

10 Monday

- 7:00 Antiques Roadshow (TV-G)**
San Diego, Cal. Part 2 of 3. Highlights include an 18th-century ivory carved creche that could be worth up to 30 times what the owner paid for it and a beautifully preserved banner from George Washington's inauguration ball. *Repeated 1 am 6/12; 3 am 6/15; and 12 am 6/17.*
- 8:00 Antiques Roadshow (TV-G)**
San Diego, Cal. Part 3 of 3. Highlights include Captain America and Fantastic Four co-creator Jack Kirby's personal collection of comics from the 1930s to the 1970s and a set of circa 1915 Cartier cuff links, buttons, and studs. *Repeated 2 am 6/12.*
- 9:00 Independent Lens (TV-PG) (DVS)**
T-Rex: Her Fight for Gold. Meet Claressa 'T-Rex' Shields, who rose from the streets of Flint, Michigan, and at 17 won the first Olympic gold medal for women's boxing in 2012. *Repeated 3 am 6/12.*
- 10:30 Amanpour and Company**
- 11:30 BBC World News**

11 Tuesday

- 7:00 We'll Meet Again (TV-PG)**
Coming Out. Season 1, part 6 of 6. Join Ann Curry as those whose lives were changed by the early days of the gay rights movement reunite. *Repeated 1 am 6/13; 4 am 6/13; and 3 am 6/17.*
- 8:00 American Experience (TV-14) (DVS)**
Stonewall Uprising. Explore the dramatic event that launched a worldwide rights movement. Told by those who took part, this film revisits a time when homosexual acts were illegal throughout America, and homosexuality itself was seen as a form of mental illness. *Repeated 2 am 6/13; and 2 pm 6/15.*
- 10:00 Detectorists**
- 10:30 Amanpour and Company**
- 11:30 BBC World News**

12 Wednesday

- 7:00 Nature (TV-G) (DVS)**
Nature's Miniature Miracles. This film tells the epic survival stories of the world's smallest animals. *Repeated 1 am 6/14; and 4 am 6/14.*
- 8:00 NOVA (TV-PG)**
Asteroid: Doomsday Or Payday? The asteroid that exploded in the skies over Siberia injuring more than 1,000 and damaging buildings in six cities was a shocking reminder that Earth is a target in a cosmic shooting range. *Repeated 2 am 6/14.*
- 9:00 Operation Maneater (TV-PG)**
Crocodile. Mark Evans travels to Namibia's Chobe River, a place that's known as the croc attack capital of the world. *Repeated 3 am 6/14.*
- 10:00 Still Open All Hours (TV-PG)**
- 10:30 Amanpour and Company**
- 11:30 BBC World News**

13 Thursday

- 7:00 Mid-American Gardener (TV-G)**
Repeated 11 am 6/15.
- 7:30 Ask This Old House (TV-G)**
Repeated 1:30 pm 6/14.
- 8:00 Shakespeare & Hathaway-Private Investigators (TV-PG)**
The Chameleon's Dish. Season 1, part 8 of 10. Awkward teen Hamish is plagued with a recurring dream in which he sees the body of a murdered woman but always wakes up before he can learn anything more.
- 9:00 Father Brown**
The Sacrifice of Tantalus. Season 7, part 6 of 10. Father Brown uncovers a web of police corruption.
- 10:00 Trolliced**
- 10:30 Amanpour and Company**
- 11:30 BBC World News**

14 Friday

- 7:00 Washington Week**
- 7:30 Firing Line with Margaret Hoover**
- 8:00 American Masters (TV-PG)**
Terrence McNally. See article on page 11. Repeated 2 am 6/16.
- 9:30 PBS Previews: Country Music (TV-PG)**
Join celebrated musicians for a concert celebrating the film by Ken Burns. Repeated 3:30 am 6/16.
- 10:00 Upstart Crow (TV-PG)**
Go On and I Will Follow. The day of Will's son Hamnet's Confirmation is approaching.
- 10:30 Amanpour and Company**
- 11:30 BBC World News**

15 Saturday

- 7:00 Les Miserables 25th Anniversary Concert at the 02**
Celebrate the legendary musical with a stellar cast including Alfie Boe, Nick Jonas, Lea Salonga, Colm Wilkinson, Norm Lewis and Ramin Karimloo.
- 11:00 Last of the Breed**
Celebrate the greatest hits of Willie Nelson, Merle Haggard and Ray Price in this 2007 concert.

16 Sunday

- 8:00 Masterpiece Mystery (TV-14) (DVS)**
Endeavour. Pylon. Season 6, part 1 of 4. See article on page 11. The murder of a schoolgirl brings Endeavour back to Oxford. Repeated 2 am 6/18; and 2 am 6/22.
- 9:30 Jamestown (TV-14)**
Season 3, part 1 of 8. After the burning of her plantation, Jocelyn regains her thirst for advancement. Repeated 3:30 am 6/18.
- 10:30 Professor T (TV-14)**
Double Life. Season 1, part 4 of 13. A missing first-year law student puzzles the team.
- 11:30 Sun Studio Sessions (TV-G)**
Rebecca Haviland & The Whiskey Heart. Backed by her band, Whiskey Heart, Haviland delivers a gritty and eclectic Americana sound.

17 Monday

- 7:00 Antiques Roadshow (TV-G)**
Vintage St. Paul. Revisit St. Paul and see how the treasures have appreciated in value. Repeated 1 am 6/19; 3:30 am 6/22; 6 pm 6/22; and 12 am 6/24.
- 8:00 Antiques Roadshow (TV-G)**
Vintage St. Louis. See today's value for items originally appraised 15 years ago. Repeated 2 am 6/19.
- 9:00 POV (TV-MA)**
Roll Red Roll. Go behind the headlines of the assault of a teenage girl by members of a high school football team. Repeated 3 am 6/19.
- 10:30 Amanpour and Company**
- 11:30 BBC World News**

18 Tuesday

- 7:00 Secrets of the Dead (TV-PG) (DVS)**
Cleopatra's Lost Tomb. Learn about the legendary queen Cleopatra, who ruled the Egyptian empire. Will an amateur archaeologist's theory reveal where the queen's lost tomb is hidden? Repeated 1 am 6/20; and 4 am 6/20.
- 8:00 Lavender Scare (TV-PG)**
Learn the untold story of how tens of thousands of homosexual federal workers were either fired or denied employment in the 1950s, stirring outrage in the gay community and starting an LGBTQ rights movement with an unlikely hero at the forefront. Repeated 2 am 6/20.
- 9:00 Frontline**
Documenting Hate: New American Nazis. In the wake of the deadly anti-Semitic attack at the Tree of Life synagogue in Pittsburgh, Frontline and ProPublica present a new investigation into white supremacist groups in America. Repeated 3 am 6/20.
- 10:00 Detectorists**
- 10:30 Amanpour and Company**
- 11:30 BBC World News**

19 Wednesday

- 7:00 Rivers of Life (TV-PG)**
The Nile. The Nile is the world's longest river. From elephants and leopards to extreme kayakers and ancient wonders, its great length provides a lifeline for Africa's wildest beasts and for some of the world's most incredible cultures. Repeated 1 am 6/21; 4 am 6/21; 3 am 6/24; and 3 am 7/1.
- 8:00 When Whales Walked: Journeys In Deep Time (TV-PG)**
Meet the ancient ancestors of four iconic creatures: crocodiles, birds, whales, and elephants. Join top scientists on a global adventure as they follow clues from the fossil record and use 21st century technology to make exciting new discoveries. Repeated 2 am 6/21; and 12 am 6/23.
- 10:00 Still Open All Hours (TV-PG)**
- 10:30 Amanpour and Company**
- 11:30 BBC World News**

20 Thursday

- 7:00 Mid-American Gardener (TV-G)**
Repeated 11 am 6/22.
- 7:30 Ask This Old House (TV-G)**
Deck Staining, Water Monitoring. Repeated 1:30 pm 6/21.
- 8:00 Shakespeare & Hathaway-Private Investigators (TV-PG)**
The Rascal Cook. Season 1, part 9 of 10. When a dead rat makes an unwelcome appearance on Hiverna restaurant's menu on their most important evening, head chef Len Tekler is beyond furious. Repeated 6 pm 6/23.
- 9:00 Father Brown**
The House of God. Season 7, part 7 of 10. A woman dies of cyanide poisoning.
- 10:00 Trolled**
- 10:30 Amanpour and Company**
- 11:30 BBC World News**

21 Friday

- 7:00 Washington Week**
- 7:30 Firing Line with Margaret Hoover**
- 8:00 American Masters (TV-G)**
Robert Shaw. Trace the journey of one of the greatest choral music conductors in the world. *Repeated 2 am 6/23.*
- 9:00 Great Performances (TV-G)**
 The Cleveland Orchestra Centennial Celebration. Celebrate the orchestra's centennial with a gala concert conducted by Franz Welser-Most, featuring pianist Lang Lang and works by Mozart, Strass and Ravel, with vignettes of past music directors. *Repeated 3 am 6/23.*
- 10:30 Amanpour and Company**
- 11:30 BBC World News**

22 Saturday

- 7:00 Mum**
- 7:30 Still Open All Hours (TV-PG)**
- 8:00 Masterpiece Classic (TV-PG) (DVS)**
Downton Abbey. Season 3, part 4 of 8. The Crawley family faces its severest test yet.
- 9:00 Masterpiece Classic (TV-PG) (DVS)**
Downton Abbey. Season 3, part 5 of 8. Things go badly amiss at Downton Abbey. Robert and Cora are not speaking.
- 10:00 Red Dwarf (TV-G)**
Twentica. The Dwarfers find themselves in an alternative version of America.
- 10:30 Austin City Limits (TV-PG)**
Margo Price/Hayes Carll. Welcome up-and-coming country singers Margo Price and Hayes Carll to ACL.
- 11:30 State & Water**

23 Sunday

- 7:00 Masterpiece Classic (TV-PG)**
Poldark. Season 4, part 1 of 8. While Ross watches Cornwall suffer under a new MP, Demelza remains caught between Ross and Hugh. *Repeated 1 am 6/25.*
- 8:00 Masterpiece Classic (TV-14) (DVS)**
Endeavour. *Apollo.* Season 6, part 2 of 4. A car accident proves to be murder, leading Endeavour to investigate suspects in the Oxford astrophysics department and a TV puppet studio. *Repeated 2 am 6/25; and 2 am 6/29.*
- 9:30 Jamestown (TV-14)**
 Season 3, part 2 of 8. Henry and Winganuske clash when their child falls ill. *Repeated 3:30 am 6/25.*
- 10:30 Professor T (TV-14)**
The Hotel Murder. Season 1, part 5 of 13. When Professor T is forbidden by Commissioner Flamant from looking into the murder of a plastic surgeon, the controversial crime-solver decides to launch his own investigation.
- 11:30 Sun Studio Sessions (TV-G)**
Reed Turchi & His Kudzu Choir. Reed & the Kudzu Choir display their authentic musical chops performing several tracks.

24 Monday

- 7:00 Antiques Roadshow (TV-G)**
Vintage Reno. Revisit Reno's highlights and see which ones have gained in value. *Repeated 1 am 6/26; 3:30 am 6/29; 6 pm 6/29; and 12 am 7/1.*
- 8:00 Antiques Roadshow (TV-G)**
Vintage Charleston. Look back to 2000 and learn what has since happened in the antiques market. *Repeated 2 am 6/26.*
- 9:00 POV (TV-14)**
The Gospel of Eureka. See article on page 10. *Repeated 3 am 6/26.*
- 10:30 Amanpour and Company**
- 11:30 BBC World News**

25 Tuesday

- 7:00 Secrets of the Dead (TV-PG)**
World War Speed. Follow historian James Holland on his quest to understand how the use of amphetamines affected the course of World War II and unleashed the first pharmacological arms race. *Repeated 1 am 6/27; and 4 am 6/27.*
- 8:00 Tiananmen: The People Versus the Party (TV-14)**
 On June 4, 1989, a violent and bloody pro-democracy demonstration ended and changed China forever. *Repeated 2 am 6/27.*
- 10:00 Detectorists**
- 10:30 Amanpour and Company**
- 11:30 BBC World News**

26 Wednesday

- 7:00 Rivers of Life (TV-PG)**
Amazon. The Amazon, the greatest river system on Earth, amasses one-fifth of Earth's freshwater as it flows east from the Andes to the Atlantic. *Repeated 1 am 6/28.*
- 8:00 NOVA (TV-G)**
First Man on the Moon. NOVA presents an intimate portrait of Neil Armstrong, the first person to set foot on the moon, through interviews with Armstrong's family and friends. *Repeated 2 am 6/28; and 12 am 6/30.*
- 9:00 POV (TV-PG)**
Bill Nye: Science Guy. Bill Nye is a man on a mission: to stop the spread of anti-scientific thinking across the world. *Repeated 3 am 6/28.*
- 10:30 Amanpour and Company**
- 11:30 BBC World News**

27 Thursday

- 7:00 Mid-American Gardener** (TV-G)
Repeated 11 am 6/29.
- 7:30 Ask This Old House** (TV-G)
Historic Plantings, Wood Utensils. Repeated 1:30 pm 6/28.
- 8:00 Shakespeare & Hathaway-Private Investigators** (TV-PG)
I'll Meet By Moonlight. Season 1, part 10 of 10. An almighty crash in the middle of the night alarms Lady Tania. *Repeated 6 pm 6/30.*
- 9:00 Father Brown**
The Blood of Anarchists. Season 7, part 8 of 10. An actor is found dead.
- 10:00 Trollied**
- 10:30 Amanpour and Company**
- 11:30 BBC World News**

28 Friday

- 7:00 Washington Week**
- 7:30 Firing Line with Margaret Hoover**
- 8:00 Big Pacific** (TV-PG)
Mysterious. Dive into the mysterious Pacific-whose depths we are just beginning to explore. There are many unanswered questions we yearn to unravel, but the ocean doesn't give up its secrets willingly. *Repeated 2 am 6/30.*
- 9:00 Great Yellowstone Thaw** (TV-PG)
Host Kirk Johnson visits this unique wilderness to unravel the story of this particular winter in Yellowstone. *Repeated 3 am 6/30.*
- 10:00 Upstart Crow** (TV-PG)
A Crow Christmas Carol.
- 10:40 Amanpour and Company**

29 Saturday

- 7:00 Mum**
- 7:30 Still Open All Hours** (TV-G)
Christmas 2016. As Christmas approaches, Granville's cost-saving measures are as cunning as ever.
- 8:00 Masterpiece Classic** (TV-PG) (DVS)
Downton Abbey. Season 3, part 6 of 8. A yearly cricket match with the village sees old scores settled and new plots hatched.
- 10:00 Red Dwarf** (TV-G)
Samsara. When the Dwarfers investigate a crashed ship at the bottom of an ocean moon, Lister and Cat become trapped.
- 10:30 Austin City Limits** (TV-PG)
Cece Winans/St. Paul & The Broken Bones. Thrill to an hour of soul and gospel.
- 11:30 State & Water**

30 Sunday

- 7:00 Masterpiece Classic** (TV-PG)
Poldark. Season 4, part 2 of 8. The Poldarks determine to get their relationship on track. *Repeated 1 am 7/2.*
- 8:00 Masterpiece Classic** (TV-14) (DVS)
Endeavour. *Confection.* Season 6, part 3 of 4. A triple murder exposes the secrets of a village in the grip of deadly rumors. *Repeated 2 am 7/2.*
- 9:30 Jamestown** (TV-14)
Season 3, part 3 of 8. Maria forms a plan which could secure a new life for her and Pedro. *Repeated 3:30 am 7/2.*
- 10:30 Professor T** (TV-14)
Tamara. Season 1, part 6 of 13. The suicide of a call girl perplexes the police.
- 11:30 Sun Studio Sessions** (TV-G)
Reba Russell. Reba Russell is a Memphis treasure with a powerful voice that resonates with fans throughout the world.

COUNTRY MUSIC

A FILM BY KEN BURNS

Meet the filmmakers and go behind the scenes of **Country Music**, the sweeping new series from director Ken Burns. **PBS Previews: Country Music** at 9:30 pm Friday, June 14 is hosted by Burns and features performances and appearances by Dierks Bentley, Roseanne Cash, Rhiannon Giddens, Vince Gill, Kathy Mattea, Marty Stuart, Dwight Yoakam, and more.



Award-winning journalism

Jim Meadows, Lee V. Gaines, Christine Herman, and Brian Moline showcase the AP Broadcast Awards won at a special ceremony in April. Gaines won second place in Best Spot News and Best Investigative Report, Herman won first place in Best Series or Documentary and Best Hard News Feature, and Moline won first place for Best Newscast.

« COMING AND GOING THIS MONTH TO » **WILL | Passport**



JUNE HIGHLIGHTS

Jamestown

- Season 3
new episode available weekly
beginning June 16

Endeavour

- Season 6
all four episodes available June 16

Professor T

- Season 1
all 13 episodes available June 20

LEAVING THIS MONTH

Antiques Roadshow

- Vintage Sacramento

Austin City Limits

- Khalid/Mac DeMarco
- James Bay/Rhiannon Giddens
- Cyndi Lauper

Independent Lens

- The Witness

Nature

- Salmon: Running the Gauntles

POV

- Singing with Angry Bird
- Brimstone and Glory

Go to will.illinois.edu/passport to download the PBS video app and unlock more shows with your WILL Passport.

“There’s no person in the whole world like you.”

—Fred Rogers

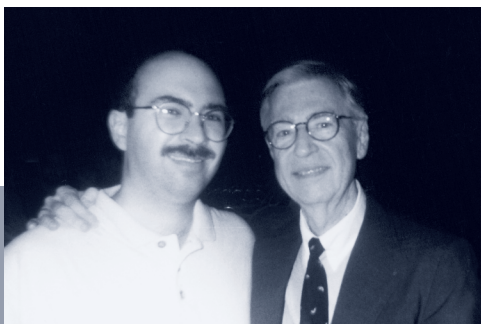


After 30 years, Director of Programming Services David Thiel has announced his retirement. Throughout his time at WILL, Thiel has made an indelible mark on the station, always willing to try something new. His knowledge, experience, and networks in the business are vast, and his enthusiasm to jump feet first into any pledge or marketing strategy is unmatched.

Thiel’s day-to-day tasks have included responding to viewer emails and phone calls, managing the TV and radio programs, and providing excellent proofreading of *Patterns*.

“There’s no way to describe David’s impact on WILL. He will be deeply missed in our everyday work,” said Moss Bresnahan, president and CEO of Illinois Public Media.

Please enjoy David’s lovely farewell letter to our Friends as we wish him the very best in his retirement!



(left) Aboard a WILL float in the Champaign-Urbana 4th of July parade.

(top) David’s official Illinois Public Media photo.

(middle) David with Mr. Rogers

(bottom) Outfitted for a The Red Green Show pledge break in 2010.

"When I first came to work at WILL in April, 1989, my office was in a neglected corner of a windowless, brick building that had once been a bakery. Back then, WILL-TV was a single channel, and signed off around midnight. Videotapes were platter-sized reels, and cassettes the size of hardcover novels.

I met my wife thanks to those videotapes. Vicky worked at WTVP-TV in Peoria, and if one of us were missing a show scheduled to air, the other would pop a tape on the bus for same-day delivery. When she tested the possibility of a relationship with me, it was under the ruse of a desperate need for **Sewing with Nancy**.



My work at WILL has given me so many opportunities over the years. I met Mister Rogers and took Mr. McFeely to dinner. I traveled to Downton Abbey and to Red Green's Possum Lodge. I portrayed a host of costumed characters, from Curious George to Cookie Monster. And I rarely missed the chance to wear a ridiculous outfit or to crack a "dad joke" during a pledge break.

I've met many, many of our viewers and listeners. I'm by no means a celebrity, but I'm recognized just often enough to keep me on my toes, even if people only know me as "that WILL guy." I've accepted both compliments and criticisms, and always tried to explain the 'why' behind a particular programming decision.

As my broadcasting career fades to black, I want to thank the dozens of colleagues you'll find within the pages of this magazine, and the hundreds more I worked with over the past thirty years. And, as always, I thank you for your support of WILL. I couldn't have done any of this without you."

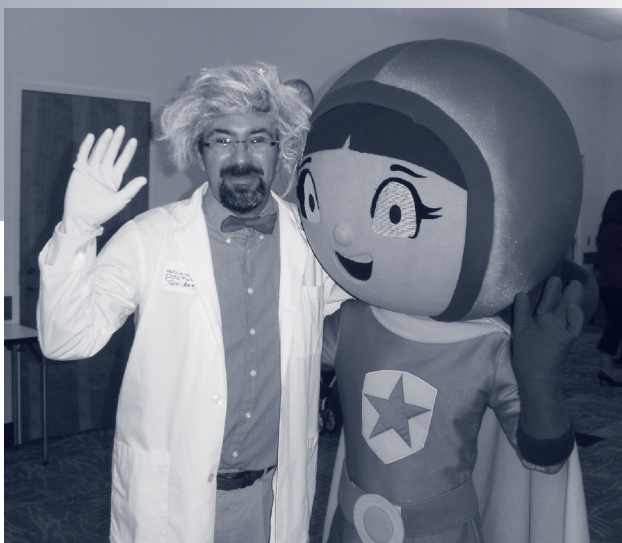
— David Thiel

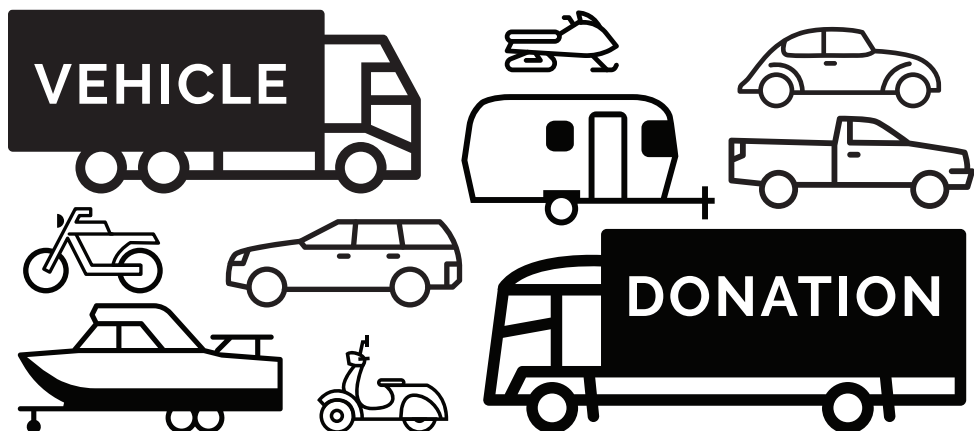


(top) Filming David's marathon training tips for the WILL Marathon in 2018.

(left) With the stars of Barney and Friends

(right) Portraying the villainous Dr. Two B rains at a WordGirl event at the Champaign Public Library.





Your old vehicle can help drive great public media programs.

To learn more about donating your vehicle to WILL, call 855-845-1960 or go to will.illinois.edu/cardonation.



**ILLINOIS STATE
BAR ASSOCIATION™**

ILLINOIS LAWYER FINDER™

Need legal help?

Search our online directory for lawyers in your area who practice in the field of law you need.

WWW.ILLINOISLAWYERFINDER.COM



Preserving Railroad History for Over 50 Years

**Ride Beautifully-Restored Diesel or Steam Trains Every Saturday and Sunday
On Fathers Day Weekend, June 15 & 16,
Dads Ride for Free with a Paid Child's Fare!**



Steam
Weekend
June 22-23

www.mrym.org
for complete fares,
schedules & tickets
I-72 at Exit 166
Monticello IL
Exhibit Cars - Gift Shop

**Climb Up Into the New
Stair Interlocking Tower**



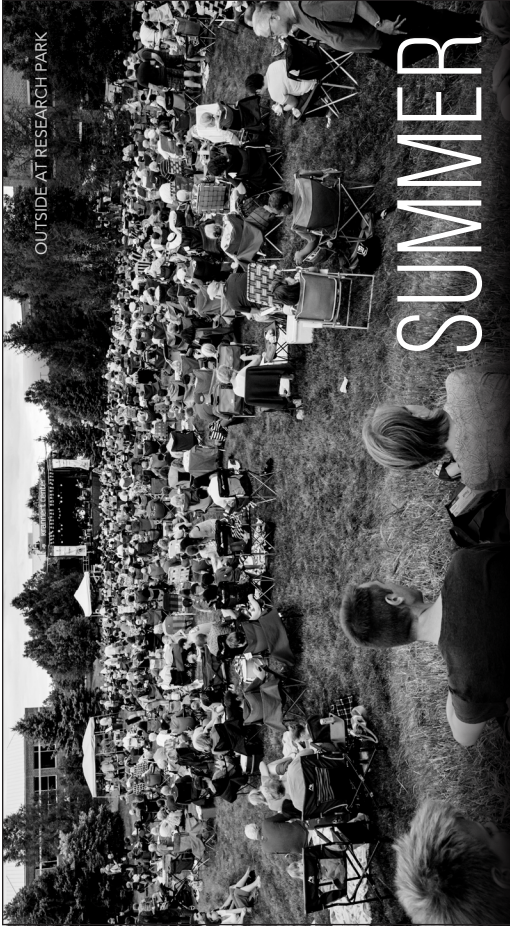
Fireworks Train - July 3
Departs from Wabash Depot Downtown
Reservations Recommended

Thank you, Program Underwriters!

Private support accounts for the largest single source of funds necessary to make Illinois Public Media and the WILL stations great resources for communities across central Illinois.

We appreciate the following organizations that have stepped forward to join the individuals and families who support award-winning public media services.

AARP	Delta Dental	Prairie Rivers Network
Agrability	Dr. G's BrainWorks	Rental City
Allerton Park Conference Center	Earlham College	Riggs Beer Company
Amasong Chorus	Eco Justice Collaborative	St. Joseph Apothecary
Archer Daniels Midland Company	Einstein Bros. Bagels	Sew Sassy
Art Mart	Emmanuel Memorial Episcopal Church	Silvercreek/Courier Cafe
Asahel Gridley Antique Shop	Farm Credit Services of Illinois	Sinfonia da Camera
Audibel	Great Value Storage	Sleepy Creek Vineyard
Baha'i Center	Hendrick House	Sock Club Enterprises LLC
Beckman Institute	Hickory Point Bank & Trust	Spurlock Museum
Beef House	Hindu Temple and Cultural Society of Central Illinois	State Farm Center
Big Grove Tavern	Illinois AgriNews	Stewart-Peterson Group Inc.
Bloomington-Normal CVB	Illinois Arts Council	Strategic Farm Marketing Inc
BodyWork Associates	Illini Mattress	Subaru of Champaign
Busey	Illinois Pork Producers Association	Sweeney Brothers
C-D Overhead Doors Inc	Illinois Program for Research in the Humanites	Symphony Orchestra Guild of Decatur
Center for Advanced Study	Illinois Shakespeare Festival	Syngenta Crop Protection
Central Illinois Antique Dealers Association	Illinois State Bar Association	Techline
Central Illinois Regional Airport	Illinois State University	Ten Thousand Villages
Champaign County Forest Preserve	Illinois Symphony Orchestra	The Art Theater
Champaign Outdoor	Institute for Sustainability iSEE	The Land Connection
Champaign Park District	International Galleries	TIAA-CREF Center for Farmland Research
Champaign-Urbana MTD	Jane Addams Book Shop	Tom Brewer Gallery
Champaign-Urbana Symphony	John Phipps Law Offices PC	TrophyTime
Cheese & Crackers	Krannert Art Museum	U of I Department of Physics
The Chorale	Krannert Center for the Performing Arts	U of I Physics Lab Escape
Christie Clinic	Lodgic Every Day Community	U of I Press
City of Urbana – Market @ The Square	Live Nation	University of Illinois Chicago College of Pharmacy
Christie Clinic	Meyer Capel Law Office	University YMCA
Clark-Lindsey Village	Midwest Renewable Energy Association	Urbana Parks Foundation
Cline Center for Advanced Social Research	Mississippi Valley Blood Center	USDA - Farm Service Agency
Columbia Street Roastery	Monticello Railway	Vermilion Voles Vintage Baseball Club
Comcast	Natural Gourmet	Virginia Theatre
Common Ground	OSF Healthcare	Weiskamp
Community Foundation of East Central Illinois	Patterson Office Supplies	Wesley United Methodist Church
Community Shares of Illinois	Peoria International Airport	Windsor of Savoy
Craft League of Champaign-Urbana	Prairie Farmer Magazine	World Harvest
CU Folk and Roots Festival	Prairie Melody Premium Black Oil Sunflower Seeds	Yoga Institute of Champaign-Urbana
C-U Symphony		



MOVING?

Let your public broadcasting membership move with you.

Fill out the form below and send it with your address label to:
Friends of WILL, 300 North Goodwin Avenue, Urbana, IL 61801-2316

Let us know six weeks in advance of moving **Go to will.illinois.edu/optout to go so that we can make the proper change.** **green & receive Patterns digitally.**

- ☐ Check here if you wish to remove your name from our membership list.
☐ Please update my membership with this new address:

Name _____
Street _____
City _____ State _____ Zip _____
Phone day () _____ evening () _____

JULY

- 19** **OUTSIDE at the Research Park:**
Alma Afrobeat Ensemble
- 20** **2019-20 Season Tickets on Sale**

ALL SUMMER

Krannert Uncorked almost every
Thursday from 5 to 7pm.

COMING THIS FALL—

Krannert Center's 50th Season!

The 2019-20 season featuring ELLINORA | The Guitar Festival: a genre-spanning, three-day event featuring Buddy Guy, Pat Metheny, Kaki King, Stephane Wrembel Band, Tony McManus and Julia Toasperm, Samantha Fish with Luther Dickinson, Bombino, and more!

Visit KrannertCenter.com for all of the latest announcements!



KRANNERT CENTER | 50

217.333.6280 • KRANNERTCENTER.COM



ILLINOIS
College of Fine & Applied Arts

Friends of WILL
Campbell Hall
300 North Goodwin Avenue
Urbana, IL 61801-2316

NONPROFIT
ORGANIZATION
U.S. POSTAGE PAID
CHAMPAIGN, IL
PERMIT NO. 453