

Patterns

January 2020

FRIENDS OF WILL MEMBERSHIP MAGAZINE



MASTERPIECE SANDITON



BASED ON THE UNFINISHED NOVEL BY
JANE AUSTEN

TUNE IN OR STREAM SUNDAY JANUARY 12

Membership Hotline: 800-898-1065
WILL AM-FM-TV: 217-333-7300
Campbell Hall
300 N. Goodwin Ave., Urbana, IL 61801-2316

Mailing List Exchange

Donor records are proprietary and confidential.
WILL does not sell, rent or trade its donor lists.

Patterns

Friends of WILL Membership Magazine

Editor/Art Designer: Sarah Whittington

Art Director: Kurt Bielema

Printed by Premier Print Group.



Printed with SOY INK
on RECYCLED,
RECYCLABLE paper.

RADIO

90.9 FM: A mix of classical music and NPR information programs, including local news. (Also with live streaming on will.illinois.edu.)
See pages 4-5.

101.1 FM and 90.9 FM HD2: Locally produced music programs and classical music from C24. (101.1 is available in the Champaign-Urbana area.) *See page 6.*

580 AM: News and information, NPR, BBC, news, agriculture, talk shows. (Also heard on 90.9 FM HD3 with live streaming on will.illinois.edu.) *See page 7.*

TELEVISION

WILL-HD

All your favorite PBS and local programming, in high definition when available. 12.1; Contact your cable or satellite provider for channel information. *See pages 9-16.*

WILL Kids 24/7

Around the clock, award-winning children's programming. 12.2; also available on Comcast and Mediacom.

WILL Create

Cooking, travel, gardening and home improvement, arts and crafts. 12.3; also available on Comcast and Mediacom. *See page 8.*

WILL World

PBS documentaries, news and public affairs. 12.3; also available on Comcast and Mediacom. *See page 8.*

ONLINE

will.illinois.edu



[facebook.com/WILLradiotvonline](https://www.facebook.com/WILLradiotvonline)



[@willpublicmedia](https://twitter.com/willpublicmedia)



[@willpublicmedia](https://www.instagram.com/willpublicmedia)

Get Aircheck

Video previews, behind-the-scenes information, program schedule updates and more, delivered every weekend to your email inbox.

will.illinois.edu/aircheck

Patterns

January 2020 Volume XLVII, Number 7



Here we are, a new year upon us. And this time it is also a new decade, with the next ten years lying ahead. As we look forward, we ask ourselves: what we would like to accomplish in 2020 and the decade beyond, and how do we plan to reach those goals?

Naturally, unbiased journalism will continue to remain as our top priority. Whether providing the truth on a national level or bringing stories to the forefront in local communities, public media will be crucial to our future.

Please take a few moments to consider your impact on public media throughout the 2020s. Can your long-term financial goals include Illinois Public Media? What part can you play in ensuring quality news and entertainment programming for all? How can you be our ally in providing public media to the next generation?

My staff and I look forward to exploring these ideas and more with you as we look toward our future. Because if there is one thing I know, it is that our Friends will play an integral role in everything we do in the next 10 years.

Moss Bresnahan, President and CEO
Twitter: @MossILMedia

Jane Austen fans, rejoice!

Sanditon comes to WILL Sundays

Jane Austen was chronically ill with a mysterious disease in early 1817, when she turned her thoughts to a happier subject. She started work on a witty and delightful novel set in a seaside town, but she never finished it. Now, noted screenwriter Andrew Davies picks up Austen's plot and takes it in a glorious and satisfying direction, on ***Sanditon***. The eight-episode series will premiere on **MASTERPIECE** at 8 pm Sunday, January 12.

With four acclaimed Austen adaptations to his credit (*Pride and Prejudice*, *Sense and Sensibility*, *Northanger Abbey*, and *Emma*), plus the *Pride and Prejudice* modernization *Bridget Jones's Diary*, Andrew Davies is no stranger to Jane Austen's story strategies—which makes him the perfect candidate to channel the creative spirit of one of the world's most amusing and penetrating novelists.

The storyline, as Austen left it in 11 beautifully crafted chapters, is as follows: Tom Parker is obsessed with turning the sleepy seaside village of Sanditon into a fashionable health resort, and he enlists the backing of local bigwig Lady Denham. Through a mishap, Tom makes the acquaintance of the Heywoods and invites their eldest daughter Charlotte for an extended stay at Sanditon.

There, the sensible Charlotte observes hypochondria, avarice, and attempted seduction run amok. Lady Denham, a widow, is playing matchmaker for her destitute nephew, Sir Edward, who is determined to seduce Lady Denham's ward, Clara. The arrival of wealthy, mixed-race heiress Miss Lambe, under the protection of Tom's upright brother Sidney, adds an interesting complication. Eligible men naturally find Miss Lambe fascinating, while Charlotte is intrigued by Sidney...

With many promising loose ends and romantic possibilities, how will the young people pair off? Who will Lady Denham designate as her heir? Will Tom's tourist spa finally catch on with the public? Where will that lead?

Andrew Davies imaginatively enters this world of Georgian-era suitors, hustlers, and health cranks and boldly tells us what happens next on ***Sanditon***. And as a Friend of WILL, you can stream the entire series upon its premiere January 12 with WILL Passport.



Sunday nights are for British novels on **MASTERPIECE**



Often considered E.M. Forster's greatest work, **Howards End** is the story of two independent and unconventional sisters and the men in their lives seeking love and meaning as they navigate an ever-changing world. Margaret Schlegel is an intelligent, idealistic young woman who is courted by the older Henry Wilcox, a self-made conservative businessman, after his wife Ruth Wilcox dies unexpectedly and he becomes owner of Howards End. Meanwhile, Margaret's passionate and capricious younger sister Helen Schlegel takes up the cause of Leonard Bast, a young bank clerk who falls on hard times at work and at home with his partner Jacky. In the absence of their late parents, the sisters' loving but interfering Aunt Juley, played by Tracey Ullman, tries to keep the young ladies on the straight and narrow. The four-episode series is presented by **MASTERPIECE** and airs at 7 pm Sundays, beginning January 12.

Explore exotic locations from your couch in this new adventure series. **Expedition with Steve Backshall** reveals there are still parts of our planet yet to be discovered. Explorer and naturalist Steve Backshall pursues incredible journeys and world firsts—unclimbed peaks, unexplored cave systems, and uncharted landscapes—setting foot where no human has been before. Join Backshall as he ventures into undiscovered territory, endures extreme physical challenges, encounters extraordinary wildlife, and teams up with remarkable people along the way. From free-diving in underground river systems and kayaking Himalayan whitewater, these expeditions push Backshall and his expert crew to the limit. The series airs at 9 pm Wednesdays, beginning January 15, when episodes 1-6 will also be available via WILL Passport.

“The mountains are
calling and I must go”



Is rehabilitation a right?

Reel Midwest returns in January with a powerful documentary exploring parole reform and the struggle of aging inmates in Illinois. *Stateville Calling* will premiere on WILL-TV at 8 pm Thursday, January 30 as part of Illinois Public Media's independent film series.

Bill Ryan, an 84-year-old Illinois resident, has spent the last several decades befriending and advocating on behalf of a group of men and women

incarcerated for life at Stateville Prison in Cresthill, Illinois. A devout Catholic and former social worker, his belief in forgiveness drives him to do this work. Ryan has helped to abolish the death penalty in Illinois and published a newspaper written by prisoners. Throughout the film, the experiences of current and formerly incarcerated inmates as well as victim's advocates, legislators, and lobbyists from both sides of the issue are highlighted. The film is a production of Scrappers Film Group.

STATEVILLE CALLING



The world's greatest street spectacular!



London's New Year's Day Parade is a cherished turn-of-year tradition bringing pomp, circumstance and good old-fashioned fun to the UK capital. Live coverage begins at 6 am Wednesday, January 1 with London's Deputy Lieutenant Roger Bramble delivering a goodwill message from the Queen. The parade follows with three and a half hours of music, dance, floats,

balloons, and more, all along a route of iconic London locations. The parade showcases the kaleidoscope of culture and color that brings 500,000 spectators to London each year. The 2020 event features more than 8,000 performers from numerous nations, including 20 marching bands and 1,000 cheerleaders from US high schools and universities.

WEEKDAYS

6 am

NPR Morning Edition

with Steve Inskeep, Rachel Martin, David Greene, and Noel King

9 am

Classic Mornings with Vic Di Geronimo
Celebrating its 10th year!

Join Vic for music and companionship and make each morning a classic morning!

Noon

Afternoon Classics

NPR News Headlines at 12:01, 1:01, and 3:01.

5 pm

NPR All Things Considered

with Ailsa Chang, Audie Cornish, Mary Louise Kelly, and Ari Shapiro

7 pm

The Evening Concert

Great performances from the great concert venues. Also on Sundays from 7-9 pm. Listings are subject to change.

Monday:

The New York Philharmonic This Week

- 1/6 **An Evening with Danny Kaye**
Kaye: "An Evening with Danny Kaye"
Zubin Mehta, conductor
Danny Kaye, conductor & host
Strauss, II: Selected Waltzes
(New Year's Program from 1988)
- 1/13 **Bernstein and Boulez conduct Britten, Schuman, and Bartók**
Britten: Suite on English Folk Tunes
Schuman: Concerto on Old English Rounds
Camerata Singers
Bartók: The Wooden Prince, Sz. 60
- 1/20 **Jaap van Zweden conducts Prokofiev and Tchaikovsky**
Prokofiev: Selections from *Romeo and Juliet*
Tchaikovsky: Symphony No. 5
- 1/27 **Jaap van Zweden conducts Erwartung and Bluebeard's Castle**
Schoenberg: Erwartung
Bartók: Bluebeard's Castle

Tuesday:

Chicago Symphony Orchestra

- 1/7 **Conductor David Afkham and Pianist Emanuel Ax**
Beethoven: Piano Concerto No. 1 in C Major
Shostakovich: Symphony No. 10 in E Minor
- 1/14 **Riccardo Muti conducts Verdi's Requiem**
Verdi: Patria oppressa! from *Macbeth*
Verdi: Messa da Requiem
Vittoria Yeo, soprano
Daniela Barcellona, mezzo-soprano
Piotr Beczala, tenor
Dmitry Belosselskiy, bass
- 1/21 **Conductor Susanna Mälkki and Saxophonist Branford Marsalis**
Bizet: Symphony in C
Fauré: Pavane for Soprano Saxophone
Williams: Escapades for Alto Saxophone from *Catch Me If You Can*

1/28 **Conductor Juraj Valčuha and Violinist Christian Tetzlaff**

Haydn: Symphony No. 85 in B-flat Major
Szymanowski: Violin Concerto No. 1, Op. 35
J. Strauss, Jr: Emperor Waltz, Op. 437
R. Strauss: Suite from *Der Rosenkavalier*

Wednesday:

Pittsburgh Symphony Orchestra

(new season)

- 1/1 Manfred Honeck, conductor
Emanuel Ax, piano
Mozart: Piano Concerto No. 17
Tchaikovsky: *Romeo and Juliet* Overture-fantasy
- 1/8 Manfred Honeck, conductor
Schmidt: "Intermezzo" from *Notre Dame*
Von Suppe: Overture to *Poet and Peasant*
Nielsen: Overture to *Maskarade*
- 1/15 Manfred Honeck, conductor
Vilde Frang, violin
Matthias Goerne, baritone
Beethoven: Violin Concerto
Mahler: The Song of the Earth
- 1/22 Manfred Honeck, conductor
Itzhak Perlman, violin
Williams: Three Pieces from *Schindler's List* for Violin and Orchestra
- 1/29 Manfred Honeck, conductor
James Ehnes, violin
Mozart: Violin Concerto No. 4
Borodin: "Polovtsian Dances" from *Prince Igor*

Thursday:

Deutsche Welle Festival Concerts

(new season)

- 1/2 **Schwetzingen Festival**
Andreas Ottensamer, clarinet
J. Stamitz: Clarinet concerto in B-flat Major
Khachaturian: Trio for Clarinet, Violin and Piano
- 1/9 **Schumannfest**
Arttu Kataja, baritone
Paulina Tukiainen, piano
Clara Schumann : Six Songs, Op. 13
Danae Dörken, piano
R. Schumann: Waldszenen (Forest Scenes)
- 1/16 **National Youth Orchestra of Germany**
Varèse: *Amérique* for orchestra
Strauss: An Alpine Symphony, Op. 64
- 1/23 **Weinberg**
Konzerthausorchester Berlin
Weinberg: Symphony No. 22, Op. 154
- 1/30 **Beethoven Week**
Alexander Sitkovetsky, violin
Isang Enders, cello
Wu Qian, piano
Beethoven: Trio in B-flat Major for Piano, Violin, and Cello, Op. 97 (Archduke)

Friday:

Prairie Performances

Concerts are subject to availability.

- 1/3 Champaign-Urbana Symphony
Stephen Alltop, conductor
Apollo Chorus of Chicago
University of Illinois Oratorio Society
Central Illinois Youth Chorus
"Carmina Burana" (10/05/2019)
Stravinsky: The Firebird Suite
Orff: Carmina Burana
- 1/10 Sinfonia da Camera
Ian Hobson, conductor
"Siren Songs" (09/22/2019)
Fauré: Masques et bergamasques
Bizet: Symphony in C Major
Debussy: Nocturnes
Ravel: Daphnis et Chloé

- 1/17 Millikin-Decatur Symphony
Sergey Bogza, conductor
"Shostakovich Symphony No. 5"
Shostakovich: Festive Overture
Mahler: Adagietto
Gounod: Ballet Music from Faust
Shostakovich: Symphony No. 5
- 1/24 Classically Black
"William Warfield: My Life and My Music"
100th anniversary
- 1/31 Illinois Symphony Orchestra
Ken Lam, conductor
"Celebrate the Seasons" (12/16/2017)
Piazzolla: "Spring" Four Seasons of Buenos Aires
Vivaldi: "Vedro con mio diletto" from Giustino
Piazzolla: "Summer" Four Seasons of Buenos Aires
Vivaldi: Selections from "Stabat Mater"
Piazzolla "Autumn" Four Season of Buenos Aires
Vivaldi: "Nel profondo cieco mondo" from Orlando Furioso
Piazzolla: "Winter" Four Seasons of Buenos Aires
Vivaldi: "Sovente il sole" from Perseo

9 pm

Night Music

Gillian Martin, Bob Christiansen, Ward Jacobson, or Scott Blankenship keep you company through the night and into the morning. **NPR News Headlines** at 9:01.

SATURDAYS

7 am

NPR Weekend Edition

with Scott Simon

9 am

Classics By Request

Submit requests to Vincent Trauth at classreq@illinois.edu or leave a message at **217-265-5064**.

11 am

Classics of the Phonograph

John Frayne's weekly exploration of memorable recordings from the 20th century.

- 1/4 Arturo Toscanini conducts Beethoven
1/11 The Casals, Cortot, Thibaud Trio
1/18 Arthur Rubinstein Plays Chopin
1/25 Fritz Kreisler, from Acoustic to Electric Recordings

Noon

Afternoon at the Opera

The Metropolitan Opera Live

- 1/4 Der Rosenkavalier (R. Strauss). Sir Simon Rattle, cond., with Camilla Nylund (Marschallin), Golda Schultz (Sophie), Magdalena Kožená (Octavian), Günther Groissböck (Baron Ochs), and the Met Ensemble.
- 1/11 Wozzeck (Berg). Yannick Nézet-Séguin, cond., with Peter Mattei (Wozzeck), Elza van den Heever (Marie), Gerhard Siegel (Captain), Christian Van Horn (Doctor), and the Met Ensemble.
- 1/18 La Traviata (Verdi). Karel Mark Chichon, cond., with Aleksandra Kurzak (Violetta), Dmytro Popov (Alfredo), Quinn Kelsey (Giorgio Germont), and the Met Ensemble.
- 1/25 La Bohème (Puccini). Marco Armiliato, cond., with Ailyn Pérez (Mimi), Matthew Polenzani (Rodolfo), Olga Kulchynska (Musetta), David Bizic (Marcello), and the Met Ensemble.

4 pm

NPR All Things Considered

with Michel Martin

5 pm

Performance Today Weekend

Host Fred Child presents a two-hour weekly program that features classical music in concert from American Public Media studios and sites across the nation and around the world, as well as classical music news, interviews and features. **[Also Sundays at 2 pm]**

7 pm

The Midnight Special

Rich Warren presents folk music and farce, show tunes and satire, traditional and contemporary, with gentle irreverence and candid observation.

9 pm

American Parlor Songbook

JP Houston and Julie Van Dusen feature clever songs, charming stories, and hilarious sketches every week.

NPR News Headlines at 9:01.

10 pm

Classics All Night

NPR News Headlines at 10:01

SUNDAYS

7 am

NPR Weekend Edition

with Lulu Garcia-Navarro

9 am

Sunday Baroque

NPR News Headlines at 9:01 and 10:01.

1 pm

The Record Shelf

2 pm

Performance Today Weekend

4 pm

NPR All Things Considered

with Michel Martin

5 pm

Classical Music

7-8 pm

The Evening Concert

The Chamber Music Society of Lincoln Center

- 1/5 **Music of the Enlightenment I**
Weber: Quintet in B-flat Major for Clarinet, Two Violins, Viola, and Cello, Op. 34
Mozart: Concerto No. 12 in A Major for Piano and String Quintet, K. 414
- 1/12 **For Three**
Paganini: Terzetto concertante in D Major for Viola, Guitar, and Cello
Beethoven: Serenade in D Major for Flute, Violin, and Viola, Op. 25
- 1/19 **Romantic Sonorities**
Myaskovsky: Quartet No. 13 in A Minor for Strings, Op. 86; Borodin Quartet Dohnányi: Quintet No. 1 in C Minor for Piano, Two Violins, Viola, and Cello, Op. 1

WEEKDAYS

6–9 am

Classical Music

9 am–noon

**Classic Mornings
with Vic Di Geronimo**

Join Vic for music and companionship and make each morning a classic morning!

Noon–overnight

Classical Music

Friday 7-9 pm

Prairie Performances

Roger Cooper presents regional concerts from the WILL listening area.

SATURDAYS

7–9 am

Classical Music

9–11 am

Classics by Request

Vincent Trauth plays requests at this time each Saturday. Submit requests at classreq@illinois.edu or leave a message at 217-265-5064.

11 am–noon

Classics of the Phonograph

John Frayne's weekly exploration of memorable recordings from the 20th century. See page 5 for listings.

Noon-4 pm

Afternoon at the Opera

Complete opera broadcasts followed, time-permitting, by opera previews and excerpts with host John Frayne.

4 pm–overnight

Classical Music

SUNDAYS

All day

Classical Music



Programs on WILL Radio are partially sponsored by a grant from the Illinois Arts Council, a state agency.

1/26 **Bach**

Bach: Ricercar in Six Voices from Musical Offering, BWV 1079
Jupiter String Quartet

Bach: Concerto in C Minor for Oboe, Violin, Strings, and Continuo, BWV 1060R

8-9 pm

The Evening Concert

Early Music Now

1/5 **The Play of Daniel**

... is a 13th century liturgical drama that tells the story of the prophet Daniel at the court of Belshazzar. We'll hear selections performed by The Dufay Collective, directed by William Lyons.

1/12 **The Musical Life of Charles the Bold**

Charles the Bold's died in battle on January 5, 1477... and was a music lover who took musicians and composers with him on all his travels, including his military campaigns.

1/19 **Music from Sicily & Naples**

We'll hear one of the few Requiem Masses to be composed in Sicily during the Baroque era, the Messa di Morti by Bonaventura Rubino, performed by the Namur Chamber Choir.

1/26 **Stop and Smell the Roses**

This week we'll hear The Orlando Consort from their CD *The Rose, The Lily, & The Whortleberry*, plus garden-themed pieces performed by Stile Antico.

9 pm

Classical Music

10 pm

Harmonia

Angela Mariani presents Baroque and early music.

NPR News Headlines at 10:01.

11 pm

The Romantic Hours

Music, poetry and romance with Mona Golabek.

midnight

Classical Music

Has it been a rough year? Did you get a haircut from Boris Johnson's barber? Did you take a job as a public relations spokesperson for Rudy Guiliani? Then you may feel the need to laugh at 2019, and the Capitol Steps could not agree more! So tune in to the Capitol Steps' New Year's edition of "Politics Takes a Holiday," at 11 am, featuring songs from their latest album, *The Lyin' Kings*. What better time to laugh at politics than now, with election season gearing up? After all, the Capitol Steps won't tell you any actual useful information, but they will tell you what rhymes with Pete Buttigieg.



| Monday - Friday | | Saturday | | Sunday |
|---|---------------------------|----------------|-----------------------------|--|
| NPR Morning Edition with Brian Moline | | 5:00 | BBC Overnight Continued | BBC World Service |
| | | 6:00 | Commodity Week | Inside Europe |
| | | 6:30 | State Week in Review | |
| | | 7:00 | NPR Weekend Edition | NPR Weekend Edition |
| 1A | | 9:00 | The Splendid Table | It's Been A Minute with Sam Sanders |
| | | 10:00 | Wait Wait ... Don't Tell Me | |
| The 21st | Statewide (F) | 11:00 | Ask Me Another | Says You |
| Here & Now with Jason Croft | | Noon | This American Life | Wait, Wait ... Don't Tell Me |
| | | 1:00 | The Moth Radio Hour | The Treatment |
| | | 1:30 | | State Week in Review |
| The Closing Market Report | | 2:00 | Radiolab | Reveal |
| BBC Newshour | Commodity Week (F) | 2:30 | | |
| Fresh Air | | 3:00 | TED Radio Hour | On the Media |
| All Things Considered with Steve Morck | | 4:00 | All Things Considered | All Things Considered |
| | | 5:00 | Science Friday | The People's Pharmacy |
| | | 6:00 | Big Picture Science | Travel with Rick Steves |
| The 21st (repeat) | Statewide (F) (repeat) | 7:00 | Living on Earth | To the Best of Our Knowledge |
| Fresh Air (repeat) | | 8:00 | Latino USA | |
| BBC World Service | Science Friday (F) | 9:00 | Alternative Radio | New Dimensions |
| | | 10:00 | Commonwealth Club | Le Show |
| | | 11:00 | Left, Right, and Center | BBC World Service |
| | | 12:00- 5 am | BBC World Service | |

Bold Listing = National/International News



AGRICULTURE

Todd Gleason, host, Closing Market Report & Commodity Week

Opening Market Report: 8:55 am; Market Update: 10:58 am; Midday Market Report: 12:58 pm;
Closing Market Report: 2:06 pm. Fridays: Commodity Week: 2:30 pm; Grain Market Summary: 4:32 pm.
To listen to archived Ag reports, sign up for the Illinois Public Media Ag E-newsletter,
or download our agricultural podcasts, visit www.willag.org



ILLINOIS PUBLIC MEDIA NEWS

Reginald Hardwick, news and public affairs director, Illinois Public Media

The news from Illinois Public Media's award-winning staff of reporters, hosts, and producers—Anna Casey, Jason Croft, Dana Cronin, Libby Foster, Lee Gaines, Christine Herman, Jim Meadows, Brian Moline, and Steve Morck—can be heard during **Morning Edition**, **The 21st**, **Here & Now**, and **All Things Considered**.



WEATHER

MONDAY-FRIDAY

Weather forecasts from meteorologist Andrew Pritchard throughout the day.

5-6 am; 11 am-noon

Mon: Craft in America

Tue: For Your Home; J. Schwanke's Life in Bloom

Wed: Make it Artsy; Growing Bolder

Thu: For Your Home; Baby Makes 3

Fri: Make48; Urban Conversion

Sun: Classical Stretch; Happy Yoga

6-7 am; noon-1 pm

Mon and Fri: Best of Sewing with Nancy; Paint This with Jerry Yarnell

Tue: Fons & Porter's Love of Quilting

Wed: Knit and Crochet Now; Painting with Wilson Bickford

Thur: Fons & Porter's Love of Quilting; Painting with Paulson

Sun: It's Sew Easy; Grand View

7-8 am; 1-2 pm

Mon and Fri: This Old House; Ask This Old House

Tue: American Woodshop; Woodsmith Shop

Wed: Classic Woodworking; The Woodwright's Shop

Thur: American Woodshop; Woodsmith Shop

Sun: Classical Stretch; Classical Stretch

WILL Kids 24/7 on 12.3

For the full WILL Kids 24/7 schedule, go to www.illinois.edu/tv/schedule



8-9 am; 2-3 pm

Mon: Dining with The Chef; Savor Dakota

Tue and Thu: Ciao Italia; Tastemakers

Wed and Fri: Kevin Belton's New Orleans Kitchen; Nick Stellino: Storyteller

Sun: Ellie's Real Good Food; Food Over 50

9-10 am

Mon: Tennessee Crossroads; Beyond Your Backyard; Rick Steves' Europe; Best of the Joy of Painting

Tue: Bare Feet; Travelscope

Wed: Burt Wolf: Travels & Traditions; Samantha Brown's Places to Love

Thu: In the Americas with David Yetman; Travelscope

Fri: Crossing South; Born to Explore with Richard Wies

Sun: Travels to Oishii Toyko; Journeys in Japan

10-11 am

Mon-Fri: Rick Steves' Europe; Best of the Joy of Painting

Sun: Garden Smart; Make 48

Weekend Marathons—9am-2pm Saturday;

11am-4pm Sunday

Jan 4/5: Happy, healthy new year

Jan 11/12: Christopher Kimball's Milk Street Television Season 3 premiere

Jan 18/19: Sara's Weeknight Meals Season 9

Jan 25/26: Martha Bakes Season 10

Monday-Friday

9:00 PBS NewsHour

10:00 Nightly Business Report

10:30 The Day

Mondays

7:00 City Rising (1/6); Reel South (1/13); AfroPop: The Ultimate Cultural Exchange (1/20, 1/27)

8:00 Local USA (1/6, 1/13); POV Shorts (1/27)

8:30 Stories from the Stage

11:00 We Are Superman (1/6); Reel South (1/13); American Experience: Roads to Memphis (1/20); POV: Singing with Angry Bird (1/27)

Tuesdays

7:00 America ReFramed

8:30 POV Shorts (1/7, 1/14, 1/28)

11:00 America ReFramed (1/7, 1/14, 1/28)

Wednesdays

7:00 POV: Farmsteads (1/8); Independent Lens: The First Rainbow Coalition (1/29)

7:30 POV: Midnight Traveler (1/1)

8:00 Frontline (1/8, 1/22, 1/29); Voices On PBS (1/15)

11:00 POV: Raising Bertie (1/1); Independent Lens: My Country No More (1/8); Local, USA (1/15); POV Shorts (1/22); The Salinas Project (1/29)

11:30 POV: All The Difference (1/15); Independent Lens: Accept The Call (1/22)

Thursdays

7:00 Amazing Human Body (1/2); Ozone Hole: How We Saved The Planet (1/9); Expedition with Steve Backshall (1/16, 1/23, 1/30)

8:00 Amazing Human Body (1/2); Sinking Cities (1/9, 1/16, 1/23, 1/30)

11:00 Amazing Human Body (1/2); NOVA (1/9, 1/16, 1/23, 1/30)

Fridays

7:00 Cyberworks and the American Dream (1/3); American Experience: McCarthy (1/10); Frontline (1/17, 1/24); Boss: The Black Experience In Business (1/31)

8:00 Company Town (1/3)

11:00 Employment Matters (1/3); Lavender Scare (1/10); Democracy Rebellion (1/17); After Parkland: Healing A Community and a Nation (1/24); American Experience: Ruby Ridge (1/31)

11:30 Employment Matters Too

Saturdays

7:00 Country Music

9:00 America Reframed

10:30 Life on the Line (1/4); POV Shorts (1/11, 1/18)

11:00 Country Music

Sundays

7:00 Nature

8:00 Finding Your Roots

9:00 Frontline (1/5, 1/12, 1/19); POV: Happy Winter (1/26)

10:00 Our Kids: Narrowing the Opportunity Gap

11:00 Nature

See the full Create & World schedules at will.illinois.edu/tv/schedule

| Monday - Friday | | Saturday | Sunday |
|--|-------|--|---|
| Newsline | 5:00 | Mister Rogers' Neighborhood | Mister Rogers' Neighborhood |
| Body Electric (M,W,F) Sit and Be Fit (T, Th) | 5:30 | Dinosaur Train | Dinosaur Train |
| Curious George | 6:00 | Sesame Street | Sesame Street |
| Nature Cat | 6:30 | Daniel Tiger's Neighborhood | Daniel Tiger's Neighborhood |
| Wild Kratts | 7:00 | Pinkalicious & Peterrific | Pinkalicious & Peterrific |
| Molly of Denali | 7:30 | Molly of Denali | Molly of Denali |
| Xavier Riddle and the Secret Museum | 8:00 | Xavier Riddle and the Secret Museum | Xavier Riddle and the Secret Museum |
| Let's Go Luna! | 8:30 | Let's Go Luna! | Let's Go Luna! |
| Daniel Tiger's Neighborhood | 9:00 | Nature Cat | Nature Cat |
| Daniel Tiger's Neighborhood | 9:30 | Wild Kratts | Cyberchase |
| Sesame Street | 10:00 | Motorweek | Consuelo Mack Wealthtrack |
| Pinkalicious & Peterrific | 10:30 | America's Heartland | To the Contrary |
| Dinosaur Train | 11:00 | Mid-American Gardener | Firing Line with Margaret Hoover |
| The Cat in the Hat | 11:30 | Growing a Greener World | Market to Market |
| Sesame Street | Noon | America's Test Kitchen | 1/5 12:00 American Masters: Alice Walker 1:00 American Masters: Julia Child 2:00 Art & Design in Chicago 2:30 Art & Design in Chicago 1/12 12:00 American Masters: James Beard 1:00 American Masters: Jacques Pepin 2:00 Art & Design in Chicago 2:30 Art & Design in Chicago 1/19 12:00 Great Performances at the Met: Manon 5:00 Great Performances: Movies for Grownups with AARP The Magazine 1/26 12:00 No Passport Required 1:00 No Passport Required 2:00 No Passport Required |
| Splash and Bubbles | 12:30 | Cook's Country | |
| Sewing Programs M: Fons & Porter's Love of Quilting Tu: Sewing with Nancy W: It's Sew Easy Th: Knit and Crochet Now! F: Quilting Arts | 1:00 | Christopher Kimball's Milk Street Television | |
| Painting and How To Programs M: American Woodshop Tu: Paint This with Jerry Yarnell W: Make It Artsy Th: Garden Smart F: Ask This Old House | 1:30 | MotorWeek | |
| Nature Cat | 2:00 | Simply Ming | |
| Wild Kratts | 2:30 | Dining with the Chef | |
| Arthur | 3:00 | Steve Raichlen's Project Fire | |
| Xavier Riddle and the Secret Museum | 3:30 | Joseph Rosendo's Travelscope | |
| Odd Squad | 4:00 | This Old House Hour | DW Focus On Europe |
| Let's Go Luna! | 4:30 | | DW Global 3000 |
| DW News | 5:00 | PBS NewsHour Weekend | PBS NewsHour Weekend |
| BBC World News | 5:30 | Rick Steves' Europe | Whitney Reynolds Show |
| PBS NewsHour | 6:00 | Antiques Roadshow | Shakespeare & Hathaway-Private Investigators |

All things must come to an end and sadly, after 40 years, the producers of **Nightly Business Report** have decided to cease production; the final episode was broadcast Friday, December 27. The series launched in 1979 and became TV's longest-running business news broadcast,

providing coverage of business and economic issues as well as market analysis. While an immediate successor to NBR has not been named, we will continue to deliver a lineup of outstanding economic and public affairs programs on WILL-TV.



A lineup of leading performers, including Bradley Cooper, Tiffany Haddish, Kevin Hart, Trevor Noah, Jon Stewart, John Legend & Chrissy Teigen, and others will salute Dave Chappelle at the 22nd annual **Kennedy Center Mark Twain Prize for American Humor** at 8 pm Monday, January 6. Dave Chappelle is an internationally recognized stand-up comedian and actor whose trademark wit and sharp, irreverent social commentary explores race, popular culture, sex, drugs, politics, and fame. Arguably the most-touring comic on the circuit, Chappelle has performed more than 1,600 sold-out shows worldwide in the past four years.

Annette Bening will receive the 2019 Movies for Grownups Career Achievement Award. Bening—a recipient of two Golden Globes, a Screen Actors Guild Award, and four-time Academy Award nominee—will be honored at the AARP *The Magazine's* 19th annual **Movies for Grownups Awards**, airing at 5 pm Sunday, January 19. Bening said, "I'm really honored that the AARP has selected me, especially since there are so many people that they could have recognized. These awards acknowledge the kinds of movies we need and don't get enough of. In that way, the awards are advocates for good moviemaking, for meaningful moviemaking. And to be a part of this is very gratifying."

Finding Your Roots returns to Tuesdays



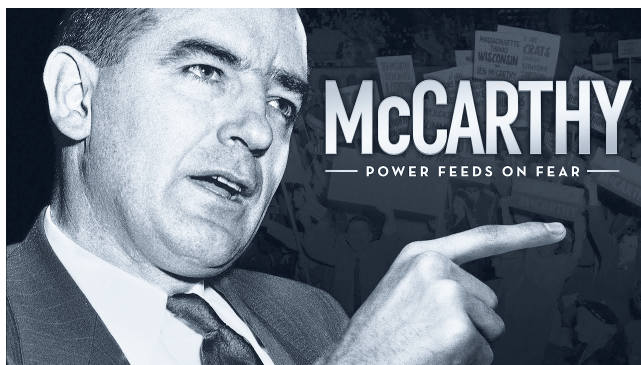
Season 6 of **Finding Your Roots** returns to 7 pm Tuesdays starting January 7. Queen Latifah, Sterling K. Brown, Jeff Goldblum, Sigourney Weaver, Jimmy Kimmel, Marisa Tomei, Lisa Ling, Soledad O'Brien, and NPR's **Fresh Air** host Terry Gross (left) are just some of the guests Henry Louis Gates, Jr. will guide through their family trees. Tune in for the mysteries, surprises, and revelations that entertain your Tuesday evening.



A killer in Vienna

Cultures and ideas collide in 1900s Vienna, Austria, where opulent cafes and opera houses set the scene for heated discussions about philosophy, science and art. When Max Liebermann, one of Sigmund Freud's young, brilliant students, encounters a strange case, he decides to help investigate a series of

unusual and chilling murders. Max draws upon his perception and forensics skills, along with his deep understanding of human behavior and deviance, to solve some of Vienna's most mysterious and deadly cases. **Vienna Blood** airs at 9 pm Sundays, beginning January 19.



The Second Red Scare

McCarthy—Power Feeds on Fear is a new documentary chronicling the remarkable rise and precipitous fall of Joseph McCarthy. The **American Experience** film premieres at 8 pm Monday, January 6 and profiles the Wisconsin senator whose zealous anti-communist crusade would test the limits of American decency and democracy. Joseph McCarthy took office after a stunning victory in an election no one thought he could win. After serving four lackluster years in Congress, he took center stage by declaring that there was a vast conspiracy threatening America—emanating

not from a rival superpower, but from within. Free of restraint or oversight, he conducted a crusade against those he accused of being Communists and enemies of the state, a chilling campaign marked by groundless accusations, bullying intimidation, grandiose showmanship and cruel victimization. With lawyer Roy Cohn at his side, he belittled critics, spinning a web of lies and distortions while spreading fear and confusion. *McCarthy* focuses on the years 1950-54, when the little-known junior senator from Wisconsin swiftly rose to international prominence.

1 Wednesday

- 7:00 Nature** (TV-PG) (DVS)
Animal Reunions. Feel the emotion as keepers and carers reunite with the wild animals that were once in their care. *Repeated* 3 am 1/3; and 1 am 1/5.
- 8:00 Great Performances** (TV-G)
From Vienna: The New Year's Celebration 2020. Celebrate 2020 with the Vienna Philharmonic and host Hugh Bonneville at the Musikverein. *Repeated* 1:30 am 1/3.
- 9:30 Symphony for Nature: The Britt Orchestra at Crater Lake** (TV-G)
Join classical musicians and Klamath drummers for a world premiere inspired by Oregon's breathtaking Crater Lake. *Repeated* 3:30 am 1/5.
- 10:00 Still Open All Hours** (TV-PG)
- 10:30 Amanpour and Company**
- 11:30 BBC World News**

2 Thursday

- 7:00 Mid-American Gardener** (TV-G)
Repeated 11 am 1/4.
- 7:30 Ask This Old House** (TV-G)
- 8:00 Shakespeare & Hathaway-Private Investigators** (TV-PG)
The Play's The Thing. Season 2, part 2 of 10. Frank and Lu investigate a possible cheater. *Repeated* 6 pm 1/12.
- 9:00 Father Brown** (TV-PG)
The Dance of Death. Season 6, part 7 of 10. A ballroom dancer is murdered.
- 10:00 Trollied**
- 10:30 Amanpour and Company**
- 11:30 BBC World News**

3 Friday

- 7:00 Washington Week**
- 7:30 Firing Line with Margaret Hoover**
- 8:00 Ken Burns' Country Music** (TV-PG)
The Rub. Part 1 of 8. See how what was first called "hillbilly music" reaches new audiences through phonographs and radio. *Repeated* 2 am 1/6.
- 10:00 Upstart Crow** (TV-PG)
Lord, What Fools These Mortals Be. Will is just finishing writing *A Midsummer Night's Dream*.
- 10:30 Amanpour and Company**
- 11:30 BBC World News**

4 Saturday

- 7:00 Mum** (TV-PG)
- 7:30 Still Open All Hours** (TV-PG)
- 8:00 MASTERPIECE** (TV-14)
Durrells In Corfu. Season 4, part 4 of 6. With the house guests getting rowdier, Louisa worries about the villa's reputation.
- 9:00 MASTERPIECE** (TV-14)
Press. *Two Worlds.* Part 5 of 6. Ed's pride in his professional achievements is marred by the arrival of a new colleague.

- 10:01 Detectorists** (TV-PG)
Detectorists Special. Andy and his friend Lance spend much of their day traipsing through fields with a metal detector.
- 10:31 Austin City Limits** (TV-PG)
Sharon Van Etten/Lucy Dacus.
- 11:30 State & Water**

5 Sunday

- 7:00 MASTERPIECE** (TV-PG)
Victoria. *A Public Inconvenience.* Season 3, part 7 of 8. Albert and Palmerston put their reputations on the line, and Victoria must fight against her better judgment to decide where to place her allegiance. *Repeated* 2 am 1/7; and 1 am 1/10.
- 8:00 MASTERPIECE** (TV-PG)
Victoria. *The White Elephant.* Season 3, part 8 of 8. The world's eyes are on the Great Exhibitions, and the Royal couple. Does triumph or failure beckon? *Repeated* 12 am 1/6; and 3 am 1/7.
- 9:00 Secrets of Henry VIII's Palace** (TV-PG)
Hampton Court is the ultimate Royal pleasure palace—it embodies the indulgent and grandiose kingship built by Cardinal Wolsey and developed by Henry VIII.
- 10:00 Song of the Mountains** (TV-G)
Charly Markwart/Paul Williams & the Victory Trio/The Chuckwagon Gang.
- 11:00 Lost River Sessions** (TV-G)
The Pennyrilers. Old time folk group The Pennyrilers perform a foot stomping set at the Patent Pending Eatery in Bowling Green, KY.
- 11:30 Film-Maker** (TV-14)
Maya, about a Syrian immigrant newly settled in the US who must take on a job that goes against her moral code.

6 Monday

- 7:00 Antiques Roadshow** (TV-G)
Winterthur Museum, Garden and Library, Del. Part 1 of 3. Kick off a new season of treasures with a \$125,000 appraisal from the grounds of Winterthur Museum. *Repeated* 4 am 1/8; and 6 pm 1/11.
- 8:00 American Experience** (TV-PG)
McCarthy: Power Feeds on Fear. See article on page 11. *Repeated* 2 am 1/12.
- 10:00 Hold The Sunset** (TV-PG)
Roger The Carer.
- 10:30 Amanpour and Company**
- 11:30 BBC World News**

7 Tuesday

- 7:00 Finding Your Roots** (TV-PG)
Homecomings. Season 6, part 3 of 10. Follow Sterling K. Brown, Sasheer Zamata and Jon Batiste as they learn about unknown ancestors. *Repeated* 3 am 1/8; 4 am 1/9; and 4 am 1/13.
- 8:00 Dave Chappelle: The Mark Twain Prize** (TV-14)
See article on page 10. *Repeated* 2 am 1/9; and 2 am 1/11.
- 9:30 Frontline**
Target El Paso. How El Paso became Trump's immigration testing ground and then the target of a white supremacist.
- 10:30 Amanpour and Company**
- 11:30 BBC World News**

8 Wednesday

7:00 Nature (TV-PG)

The Whale Detective. Filmmaker Tom Mustill returns to California to investigate whales after a 30-ton humpback whale breached and landed on his sea kayak in 2015. *Repeated* 3 am 1/10; 1 am 1/12; 1 am 1/15.

8:00 NOVA (TV-PG)

The Planets: Inner Worlds. The rocky planets—Mercury, Venus, Earth and Mars—were born of similar material around the same time, yet only one supports life. *Repeated* 4 am 1/10; and 12 am 1/12.

9:00 Ozone Hole: How We Saved The Planet (TV-G)

Discover the forgotten story of the hole in the ozone layer and how the world came together to fix it. *Repeated* 1 am 1/9; 2 am 1/10; 1 am 1/14; and 1 am 1/18.

10:00 Still Open All Hours (TV-PG)

10:30 Amanpour and Company

11:30 BBC World News

9 Thursday

7:00 Mid-American Gardener (TV-G)

Repeated 11 am 1/11.

7:30 Ask This Old House (TV-G)

8:00 Shakespeare & Hathaway-Private Investigators (TV-PG)

This Cursed Hand. Season 2, part 3 of 10. Frank and Lu look for a missing husband.

9:00 Father Brown (TV-PG)

The Cat of Mastigatus. Season 6, part 8 of 10. A schoolgirl is attacked.

10:00 Trollied

10:30 Amanpour and Company

11:30 BBC World News

10 Friday

7:00 Washington Week

7:30 Firing Line with Margaret Hoover

8:00 Ken Burns' Country Music (TV-PG)

Hard Times. Part 2 of 8. Nashville becomes the heart of the country music industry. *Repeated* 2 am 1/13.

10:00 Upstart Crow (TV-PG)

Wild Laughter in the Throat of Death. Will insists that Hamlet isn't actually meant to be funny.

10:30 Amanpour and Company

11:30 BBC World News

11 Saturday

7:00 Mum (TV-PG)

7:30 Still Open All Hours (TV-PG)

8:00 MASTERPIECE (TV-14)

Durrells In Corfu. Season 4, part 5 of 6. The residents of Corfu are excited at the prospect of a visit from the king of Greece.

9:00 MASTERPIECE (TV-14)

Press. Resonance. Part 6 of 6. Duncan's personal life appears to be in dire straits.

10:03 Detectorists (TV-PG)

10:32 Austin City Limits (TV-PG)

The Raconteurs/Black Pumas.

11:30 State & Water

12 Sunday

7:00 Howards End (TV-PG)

Part 1 of 4. See article on page 10. A misunderstanding, a visit and an umbrella unexpectedly intertwine the lives of three families. *Repeated* 12 am 1/13; 2 am 1/14; and 4 am 1/14.

8:00 MASTERPIECE (TV-14)

Sanditon. Part 1 of 8. See article on page 1. A chance accident takes Charlotte Heywood to Sanditon.

10:00 Song of the Mountains (TV-G)

Tim White & Troublesome Hollow.

11:00 Lost River Sessions (TV-G)

Kent Eugene Goolsby. The Nashville singer-songwriter performs an acoustic session of songs about love and life.

11:30 Film-Maker (TV-14)

Rene De Dios and the South Beach Shark Club is a nostalgic recollection of Miami Beach from the late 60's to modern times *Breathe* is a student film inspired by real life situations involving two young men dealing with stereotypical baggage.

13 Monday

7:00 Antiques Roadshow (TV-G)

Winterthur Museum, Garden and Library, Del. Part 2 of 3. Highlights include Stephen King first editions from 1974-1977; an Ilya Schor silver plate; and a Louis Comfort Tiffany oil, ca. 1870. *Repeated* 4 am 1/15; 1 am 1/17; 2 am 1/18; 6 pm 1/18; and 3 am 1/19.

8:00 Frontline

America's Great Divide: Obama to Trump. Part 1 of 2. See article on page 16. *Repeated* 2 am 1/15.

10:00 Hold The Sunset (TV-PG)

Old Flames.

10:30 Amanpour and Company

11:30 BBC World News

14 Tuesday

7:00 Finding Your Roots (TV-PG)

This Land Is My Land. Season 6, part 4 of 10. Learn more about the unexpected family trees of entertainer Queen Latifah and actor Jeffrey Wright. *Repeated* 4 am 1/16; 4 am 1/20.

8:00 Frontline

America's Great Divide: Obama to Trump. Part 2 of 2. See article on page 16. *Repeated* 2 am 1/16.

10:00 Detectorists (TV-PG)

Andy has been thinking about internet dating. Not for him, but for his friend Lance, who's still not over his ex-wife. .

10:30 Amanpour and Company

11:30 BBC World News

15 Wednesday

- 7:00 Nature** (TV-G)
Hippos: Africa's River Giants. Discover an unexpected side of these aquatic mammals that can't even swim as hippos protect their families, face their enemies and suffer in a drought. *Repeated 3 am 1/17; and 1 am 1/19.*
- 8:00 NOVA** (TV-G)
The Planets: Jupiter. Jupiter's massive gravitational force made it a wrecking ball when it barreled through the early solar system. *Repeated 4 am 1/17; and 12 am 1/19.*
- 9:00 Expedition with Steve Backshall** (TV-PG)
Oman-Desert Canyon. Part 1 of 6. See article on page 2. Head into an Arabian desert canyon that no human has ever explored. *Repeated 1 am 1/16; 2 am 1/17; 3 am 1/18; and 2 am 1/19.*
- 10:00 Still Open All Hours** (TV-PG)
- 10:30 Amanpour and Company**
- 11:30 BBC World News**

16 Thursday

- 7:00 Mid-American Gardener** (TV-G)
Repeated 11 am 1/18.
- 7:30 Ask This Old House** (TV-G)
Cable Railing, Painting Shutters.
- 8:00 Shakespeare & Hathaway-Private Investigators** (TV-PG)
Beware The Ides of March. Season 2, part 4 of 10. When Julianne Fortby is nearly killed, she visits Frank and Lu. *Repeated 6 pm 1/26.*
- 9:00 Father Brown** (TV-PG)
The Flower of the Fairway. Season 6, part 9 of 10. A body is found on a new golf course.
- 10:00 Trollied**
- 10:30 Amanpour and Company**
- 11:30 BBC World News**

17 Friday

- 7:00 Washington Week**
- 7:30 Firing Line with Margaret Hoover**
- 8:00 Ken Burns' Country Music** (TV-PG)
The Hillbilly Shakespeare. Part 3 of 8. meet honky-tonk star Hank Williams. *Repeated 2 am 1/20.*
- 10:00 Upstart Crow** (TV-PG)
If You Prick Us, Do We Not Bleed? London is full of anti-immigrant rioting.
- 10:30 Amanpour and Company**
- 11:30 BBC World News**

18 Saturday

- 7:00 Mum** (TV-PG)
- 7:30 Still Open All Hours** (TV-PG)
- 8:00 MASTERPIECE** (TV-14)
Durrells In Corfu. Season 4, part 6 of 6. The islanders realize they can no longer ignore the rumblings of war.
- 9:00 MASTERPIECE** (TV-PG)
Poldark. Season 5, part 1 of 8. The Poldarks look forward to life together in peace.
- 10:00 Detectorists** (TV-PG)
- 10:30 Austin City Limits** (TV-PG)
Mitski/Rainbow Kitten Surprise.
- 11:30 State & Water**

19 Sunday

- 7:00 Howards End** (TV-G)
 Part 2 of 4. Mrs. Wilcox makes a request. The Schlegels face eviction, while the sisters take up a cause. *Repeated 12 am 1/20; 2:30 am 1/21; and 3:30 am 1/21.*
- 8:00 MASTERPIECE** (TV-14)
Sanditon. Part 2 of 8. Charlotte and Sidney have an awkward encounter.
- 9:00 Vienna Blood** (TV-14)
 Part 1 of 6. See article on page 11. Max and Oskar investigate the seemingly supernatural murder of a beautiful young medium. *Repeated 1 am 1/20; 1:30 am 1/21; and 1 am 1/25.*
- 10:00 Song of the Mountains** (TV-G)
Gary Brewer & the Kentucky Ramblers/The Kevin Prater Band.
- 11:00 Lost River Sessions** (TV-G)
Carl Johnson & Rock Creek Bluegrass. Banjo player Carl Johnson is accompanied by his group Rock Creek Bluegrass as they perform a selection of traditional folk tunes at the A-Frame in Bowling Green, KY.
- 11:30 Film-Maker** (TV-14)
what's more important? shows R.C., a young man in search of a job and car. *Pluto*, a short film about Charlie's pet dog Pluto, who is sent back in time to hopefully save the earth from oblivion.

20 Monday

- 7:00 Antiques Roadshow** (TV-G)
Winterthur Museum, Garden and Library, Del. Part 3 of 3. Incredible appraisals include 1820 J.J. Audubon portraits; a Ming Dynasty Xiwan-gmu figure; and Ric Binkley science fiction illustrations, ca. 1950. *Repeated 4 am 1/22; and 6 pm 1/25.*
- 8:00 No Passport Required** (TV-PG)
Los Angeles. Season 2, part 2 of 6. Explore Los Angeles with Chef Marcus Samuelsson as he discovers the city's Armenian food and culture. *Repeated 2 am 1/23; 1 am 1/24; and 3 am 1/26.*
- 9:00 Independent Lens** (TV-PG)
Accept The Call. An immigrant struggles to understand why his son would attempt to join ISIS. *Repeated 2 am 1/22; and 2 am 1/25.*
- 10:30 Amanpour and Company**
- 11:30 BBC World News**

21 Tuesday

- 7:00 Finding Your Roots** (TV-PG)
Beyond The Pale. Season 6, part 5 of 10. Explore the Jewish heritages of actor Jeff Goldblum, radio host Terry Gross and comedian Marc Maron. *Repeated 4 am 1/23; and 4 am 1/27.*
- 8:00 Secrets of the Dead** (TV-PG)
Bombing Auschwitz. Join historians, survivors, and experts as they consider one of the great moral dilemmas of the 20th century. *Repeated 3 am 1/23.*
- 9:00 Frontline**
Repeated 1 am 1/22.
- 10:00 Detectorists** (TV-PG)
 Andy spots something suspicious.
- 10:30 Amanpour and Company**
- 11:30 BBC World News**

22 Wednesday

- 7:00 Nature** (TV-PG)
Wild Way of the Vikings. Experience the natural world through the eyes of the Vikings. Repeated 3 am 1/24; and 1 am 1/26.
- 8:00 NOVA** (TV-G)
The Planets: Saturn. NASA's Cassini explores Saturn for 13 years, looping through its icy rings and flying by its moons. Repeated 4 am 1/24; and 12 am 1/26.
- 9:00 Expedition with Steve Backshall** (TV-PG)
Greenland-Frozen Frontier. Part 2 of 6. Backshall explores the Arctic during its most volatile time of year. Repeated 1 am 1/23; 2 am 1/24; and 2 am 1/26.
- 10:00 Still Open All Hours** (TV-PG)
- 10:30 Amanpour and Company**
- 11:30 BBC World News**

23 Thursday

- 7:00 Mid-American Gardener** (TV-G)
Repeated 11 am 1/25.
- 7:30 Ask This Old House** (TV-G)
- 8:00 Shakespeare & Hathaway-Private Investigators** (TV-PG)
No More Cakes and Ale. Season 2, part 5 of 10. Portia Montgomery, Solicitor Advocate, visits Frank and Lu with a plea for help.
- 9:00 Father Brown** (TV-PG)
The Two Deaths of Hercule Flambeau. Season 6, part 10 of 10. Father Brown is duped by Flambeau.
- 10:00 Trollied**
- 10:30 Amanpour and Company**
- 11:30 BBC World News**

24 Friday

- 7:00 Washington Week**
- 7:30 Firing Line with Margaret Hoover**
- 8:00 Ken Burns' Country Music** (TV-PG)
I Can't Stop Loving You. Part 4 of 8. Travel to Memphis, where Sun Studios artists Johnny Cash and Elvis Presley usher in the era of rockabilly. Repeated 2 am 1/20.
- 10:00 Upstart Crow** (TV-PG)
Sign No More. With the great fog making London too smelly to stay in Will and his friends have all come to Stratford.
- 10:30 Amanpour and Company**
- 11:30 BBC World News**

25 Saturday

- 7:00 Mum** (TV-PG)
- 7:30 Still Open All Hours** (TV-PG)
- 8:00 MASTERPIECE** (TV-14)
The Miniaturist. Nella marries to rescue her family from financial ruin. Her rich husband is not all she imagined, plus he gives her a very peculiar wedding gift.
- 9:00 MASTERPIECE** (TV-PG)
Poldark. Season 5, part 2 of 8. Demelza and the children become caught in a dangerous web.
- 10:00 Detectorists** (TV-PG)
- 10:30 Austin City Limits** (TV-PG)
Cage The Elephant/Tank and the Bangas.
- 11:30 State & Water**

26 Sunday

- 7:00 Howards End** (TV-PG)
Part 3 of 4. Margaret receives an unexpected offer from Henry. The three families collide at a wedding. Repeated 12 am 1/27; 3 am 1/28; and 4 am 1/28.
- 8:00 MASTERPIECE** (TV-14)
Sanditon. Part 3 of 8. A health emergency throws Charlotte and Sidney together.
- 9:00 Vienna Blood** (TV-14)
Part 2 of 6. The supernatural elements of a murder mystery threaten Oskar's career and ultimately Max's life. Repeated 1 am 1/27; and 2 am 1/28.
- 10:00 Song of the Mountains** (TV-G)
- 11:00 Lost River Sessions** (TV-G)
Tim Easton. Folk troubadour Tim Easton performs an intimate, acoustic set exploring life on the road and the human condition.
- 11:30 Film-Maker** (TV-PG)
The Cardboard King, we meet Gustavo, a Cuban immigrant living in the US. *Flying Solo,* a short documentary about the first Asian woman to fly solo around the world. *Six Toes,* we head to Key West for a dark humor short film about Hemingway cats, accidental suicides, and happy childhood memories.

27 Monday

- 7:00 Antiques Roadshow** (TV-G)
Bonanzaville, N.D. Part 1 of 3. Travel to Bonanzaville in West Fargo for the biggest find of the season. Repeated 4 am 1/29; and 2 am 1/30.
- 8:00 No Passport Required** (TV-PG)
Houston. Season 2, part 3 of 6. Join Chef Marcus Samuelsson to explore the food and culture of Houston's West African community. Repeated 2 am 1/29.
- 9:00 Independent Lens** (TV-PG)
The First Rainbow Coalition. See how community-based movements came together across lines of race and ethnicity to confront issues such as police brutality and substandard housing in 1960s Chicago. Repeated 1 am 1/28; and 3 am 1/29.
- 10:00 Hold The Sunset** (TV-PG)
If I Were A Wiseman.
- 10:30 Amanpour and Company**
- 11:30 BBC World News**

28 Tuesday

- 7:00 Finding Your Roots** (TV-PG)
Secrets & Lies. Season 6, part 6 of 10. Discover the surprising family histories of actors Sigourney Weaver, Justina Machado and Amy Ryan. Repeated 4 am 1/30.
- 8:00 American Experience** (TV-PG)
Ruby Ridge. Examine through eyewitness accounts the 1992 FBI siege at Ruby Ridge that helped launch the modern militia movement. Repeated 3 am 1/30; and 1 am 1/31.
- 9:00 Frontline** (TV-14)
Documenting Hate: New American Nazis. Exposing a neo-Nazi group that has actively recruited inside the US military. Repeated 1 am 1/29.
- 10:00 Detectorists** (TV-PG)
Russell and Hugh embark on their mission to recover the Mayor's chain of office.
- 10:30 Amanpour and Company**
- 11:30 BBC World News**

29 Wednesday

7:00 Nature (TV-PG) (DVS)

The Cheetah Children. For nearly two years in the forested hills of Zimbabwe, wildlife cameraman Kim Wolhuter shadowed a wild cheetah family on foot. *Repeated 3 am 1/31.*

8:00 NOVA (TV-G)

The Planets: Ice Worlds. In the far reaches of the solar system, Uranus and Neptune dazzle with unexpected rings, supersonic winds and dozens of moons. *Repeated 4 am 1/31.*

9:00 Expedition with Steve Backshall (TV-PG)

Suriname-Lost World. Part 3 of 6. Travel to the Guiana Shield to search for new wildlife and natural wonders. *Repeated 1 am 1/30; and 2 am 1/31.*

10:00 Still Open All Hours (TV-PG)

10:30 Amanpour and Company

11:30 BBC World News

30 Thursday

7:00 Mid-American Gardener (TV-G)

Repeated 11 am 2/1.

7:30 Ask This Old House (TV-G)

8:00 Reel Midwest

Stateville Calling. See article on page 3.

9:00 Father Brown

The Great Train Robbery. Season 7, part 1 of 10. Felicia and Mrs McCarthy are kidnapped.

10:00 Trollied

10:30 Amanpour and Company

11:30 BBC World News

31 Friday

7:00 Washington Week

7:30 Firing Line with Margaret Hoover

8:00 Ken Burns' Country Music (TV-PG)

The Sons and Daughters of America. Part 5 of 8. Loretta Lynn speaks to women everywhere. *Repeated 2 am 2/3.*

10:00 Upstart Crow (TV-PG)

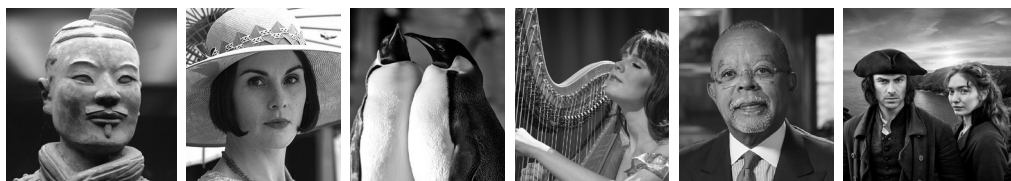
The Most Unkindest Cut of All. Will has decided to write a play about the life of Julius Caesar.

10:30 Amanpour and Company

11:30 BBC World News



Frontline presents *America's Great Divide: From Obama to Trump*, an investigation into America's increasingly bitter, divided, and toxic politics, airing at 8 pm Monday, January 13 and Tuesday, January 14. Part one traces how Barack Obama's promise of unity collapsed as increasing racial, cultural, and political divisions laid the groundwork for the rise of Donald Trump, while part two examines how Donald Trump's campaign exploited the country's divisions and how his presidency has unleashed anger on both sides of the divide..



WILL | Passport workshops

Need help getting started with Passport?

An annual gift to WILL of \$60 or more (\$5/ month or more) entitles you to PBS Passport, a member benefit that allows you extended access to hundreds of hours of additional PBS programming on your computer, plus many mobile devices and streaming platforms! If you haven't activated your Passport benefit or you need a little extra help navigating the programming, you can join us at our WILL-TV Passport drop-in workshops. WILL development staff will be available to show you the various places to find PBS programming, how to activate Passport to access more programs,

and walk you through setting up the PBS app on your mobile device or streaming platform for TV. Go to will.illinois.edu/passport for a current list of available platforms.

- **January 14: 10am–11am at Campbell Hall**
300 N Goodwin Ave, Urbana
(park at meters on Clark or Main Streets)
- **February 11: 10am–11am at Campbell Hall**
- **March 10: 10am–11am at Campbell Hall**
- **April 7: 10am–11am at Danville Public Library**
2nd Fl. Conference Room, 319 N Vermilion St, Danville
- **May 12: 10am–11am at Decatur Public Library**
Board Room, 130 N Franklin St, Decatur

You need an active e-mail address in order to activate Passport.

« COMING AND GOING THIS MONTH TO »



WILL | Passport



JANUARY HIGHLIGHTS

Resistance on Walter's Choice
Entire season available January 2

MASTERPIECE: Sanditon
Entire season available January 12

Expedition
Episodes 1-6 available January 15

LEAVING SOON

American Experience
· The Assassination of Abraham Lincoln

American Masters
· Mike Nichols

Great Performances
· Alicia Keys: Landmarks Live
· Bel Canto from Lyric Opera of Chicago
· Brad Paisley: Landmarks Live

Independent Lens
· The Trails of Muhammad Ali

Go to will.illinois.edu/passport to download the PBS video app and find out how you can unlock more shows with your WILL Passport.



Resistance comes to WILL Passport

Based on true events, **Resistance** tells the story of a group of young heroes fighting for freedom from Nazi occupation during WWII. Together, they join forces to produce a newspaper, and Lili and her friend The Kid accept the dangerous task of distributing copies and begin to fall in love. From Walter's Choice, the six-part series airs in French with English subtitles.



On the road with Kellie!

Kellie Blanden, assistant director of educational outreach and professional development at WILL, is regularly on the road bringing great resources to our littlest Friends. Follow along on her latest road trips!



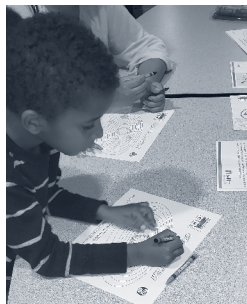
Farmer City



The Farmer City Public Library celebrated the 50th anniversary of Sesame Street in November. Families listened to a story, watched an episode all about showing love, learned a new song in sign language, and created character masks.



Champaign



In October, WILL Education worked with the Champaign Unit 4 ParentComm University program to present "STEAM All Around Us." The family event encouraged kids to look for STEAM activities and innovations through their everyday routines.

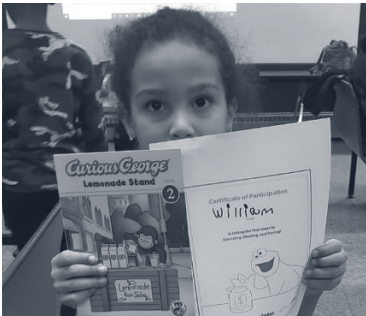


Hoopeston

Kids at the Hoopeston Public Library learned all about ziplines during a session of Design Squad in November. Kellie trains other educators so they can lead the STEM program in various communities.



Rantoul



Families from the We Prep 4 Success program gathered at the Rantoul Youth Center in December to learn about making good choices; understanding value; and spending, sharing, and saving! As William here said, "Elmo makes learning about money fun!"



A special thanks to special Friends Holly and Kurt Hirschert

Holly and Kurt Hirschert are enthusiastic viewers and listeners to WILL, dedicated professionals, and accomplished amateur singers. At some point in the week, they will have watched or listened to every WILL station!

After receiving two math degrees from the University of Illinois, Kurt is now retired from its atmospheric sciences department. Kurt remembers listening to WILL-AM most of the day at work, encouraging colleagues to also listen to all kinds of public radio programming. He was an early user of internet streaming, and sometimes listens to other public radio stations, in addition to WILL. These days he is an enthusiastic WILL-TV viewer—he's an expert on our schedule from top to bottom, from documentaries and news programs to his favorite foreign drama programs, like the Walter's Choice series currently on WILL



Passport and WILL-TV. When he's not home to watch a favorite, Kurt records it for later viewing.

Holly is an environmental protection engineer at the Illinois EPA. Holly graduated with a BA in chemistry from Hendrix College in her native Arkansas and then got an MS in chemical engineering from the University of California, Santa Barbara. She enjoys many of the science, nature, and documentary programs on WILL, of course, but also loves WILL's arts programming.

The Hirscherts have included WILL in their estate plans with help from experts at the University of Illinois Foundation. Their gift will help to ensure a future for public TV and radio here in central Illinois that is rich in diverse programs—from the news to nature and dramas to documentaries. Many thanks to you, Kurt and Holly, from all of us who love Illinois Public Media.

Illinois Public Media welcomes Amanda Hill



Amanda Hill joins the Illinois Public Media staff as the stewardship and member relations manager. In her new role, Hill will work with our many Friends to make sure they are enjoying their many member benefits.

After working at the University Foundation for a few years, Hill decided to be a stay-at-

home parent. Now that her kids are older, Hill is excited to be back working with generous donors. "The best part of working with Friends is that I can tell them first-hand about the amazing work we do with their gifts."

When not chauffeuring her kids to their various activities, Hill loves to read and watch television with her WILL Passport. "I love the dramas on MASTERPIECE: **Downton Abbey**, **Victoria**, **Les Misérables**, as well as historical fiction both on TV and in books. I also love reading suspense and mystery novels."

Hill also spends time attempting to train her lovable labrador Rosco. "He has definitely jumped out of the car window multiple times! He's very lovable, but also rambunctious."

Hill and her family also enjoy the outdoors, hiking in various locations. And this summer, they will head to Italy, 20 years after Hill spent a semester abroad in Florence. "I'm really excited for us all to go together and get to experience it again."

Welcome Amanda!

Thank you, Program Underwriters!

Private support accounts for the largest single source of funds necessary to make Illinois Public Media and the WILL stations great resources for communities across central Illinois.

We appreciate the following organizations that have stepped forward to join the individuals and families who support award-winning public media services.

Allerton Park Conference Center
American Guild of Organists
Art Mart
Asahel Gridley Antique Shop
Audibel
Beckman Institute
Beef House
Big Grove Tavern
Bloomington-Normal CVB
BodyWork Associates
Busey
C-D Overhead Doors Inc
Center for Advanced Study
Central Illinois Antique Dealers Association
Central Illinois Regional Airport
Champaign County Forest Preserve
Champaign Danville Overhead Doors
Champaign Park District
Champaign Urbana Ballet
Champaign-Urbana Spinners and Weavers Guild
Champaign-Urbana Symphony
Cheese & Crackers
Christie Clinic
City of Urbana – Market @ The Square
Christie Clinic
Clark-Lindsey Village

Cline Center for Advanced Social Research
Columbia Street Roastery
Common Ground
Community Shares of Illinois
Corson Music
Craft League of Champaign-Urbana
CU Folk and Roots Festival
Delta Dental
Doudna Fine Arts Center
Eco Justice Collaborative
Emmanuel Memorial Episcopal Church
Farm Credit Services of Illinois
Great Value Storage
Hendrick House
Hickory Point Bank & Trust
Illinois Arts Council
Illini Mattress
Illini Pella
Illinois Program for Research in the Humanities
Illinois Symphony Orchestra
Institute for Sustainability iSEE
Krannert Art Museum
Krannert Center for the Performing Arts
Makerspace Makerfest
Meyer Capel Law Office
Midwest Renewable Energy Association
Mississippi Valley Blood Center

Monticello Railway
Natural Gourmet
Patterson Office Supplies
Prairie Rivers Network
Rental City
Riggs Beer Company
Risk Management Commodities
Rose Bowl Tavern
St. Joseph Apothecary
Sew Sassy
Sinfonia da Camera
Stewart-Peterson Group Inc.
Subaru of Champaign
Sweeney Brothers
Symphony Orchestra Guild of Decatur
Techline
Ten Thousand Villages
The Land Connection
The Upper Bout
Thomas-Mamer, LLP
Tom Brewer Gallery
TrophyTime
U of I Department of Physics
U of I Physics Lab Escape
U of I Press
Urbana Park District
Vermilion Voles Vintage Baseball Club
Virginia Theatre
Windsor of Savoy
World Harvest
Yoga Institute of Champaign-Urbana



BRUSH THEATRE: YAO YAO

JANUARY 2020

- 13** Dance for People with
Parkinson's
- 24** Brush Theatre: Yao Yao

- 26** Naumburg International Violin
Competition Winner:
Grace Park
- 28-29** Shanghai Ballet:
The Butterfly Lovers
- 21-31** Krannert Center Tours



KRANNERT CENTER | 50

217.333.6280 • KRANNERTCENTER.COM



ILLINOIS
College of Fine & Applied Arts

MOVING? Let your public broadcasting membership move with you.

Fill out the form below and send it with your address label to:
Friends of WILL, 300 North Goodwin Avenue, Urbana, IL 61801-2316

Let us know six weeks in advance of moving Go to will.illinois.edu/optout to go so that we can make the proper change. **green & receive Patterns digitally.**

- ☐ Check here if you wish to remove your name from our membership list.
- ☐ Please update my membership with this new address:

Name _____

Street _____

City _____ State _____ Zip _____

Phone day () _____ evening () _____

Friends of WILL
Campbell Hall
300 North Goodwin Avenue
Urbana, IL 61801-2316

NONPROFIT
ORGANIZATION
U.S. POSTAGE PAID
CHAMPAIGN, IL
PERMIT NO. 453