

FRIENDS OF WILL MEMBERSHIP MAGAZINE



Patterns

November 2020



Membership Hotline: 800-898-1065
WILL AM-FM-TV: 217-333-7300
Campbell Hall
300 N. Goodwin Ave., Urbana, IL 61801-2316

Mailing List Exchange

Donor records are proprietary and confidential.
WILL does not sell, rent or trade its donor lists.

Patterns

Friends of WILL Membership Magazine
Editor/Art Designer: Sarah Whittington
Art Director: Kurt Bielema

Printed by Premier Print Group.



Printed with SOY INK
on RECYCLED,
RECYCLABLE paper.

RADIO

90.9 FM: A mix of classical music and NPR information programs, including local news. (Also with live streaming on will.illinois.edu.)
See pages 4-5.

101.1 FM and 90.9 FM HD2: Locally produced music programs and classical music from C24. (101.1 is available in the Champaign-Urbana area.) *See page 6.*

580 AM: News and information, NPR, BBC, news, agriculture, talk shows. (Also heard on 90.9 FM HD3 with live streaming on will.illinois.edu.) *See page 7.*

TELEVISION

WILL-HD

All your favorite PBS and local programming, in high definition when available. 12.1; Contact your cable or satellite provider for channel information. *See pages 9-16.*

WILL Kids 24/7

Around the clock, award-winning children's programming. 12.2; also available on Comcast and Mediacom.

WILL Create

Cooking, travel, gardening and home improvement, arts and crafts. 12.3; also available on Comcast and Mediacom. *See page 8.*

WILL World

PBS documentaries, news and public affairs. 12.3; also available on Comcast and Mediacom. *See page 8.*

ONLINE

will.illinois.edu



[facebook.com/WILLradiotvonline](https://www.facebook.com/WILLradiotvonline)



[@willpublicmedia](https://twitter.com/willpublicmedia)



[@willpublicmedia](https://www.instagram.com/willpublicmedia)

Get Aircheck

Video previews, behind-the-scenes information, program schedule updates and more, delivered every weekend to your email inbox.

will.illinois.edu/aircheck

Patterns

November 2020 Volume XLVIII, Number 5



This month, I write with a sense of gratitude for the many kindnesses you have given us over the last few months. You have continued your support of WILL television and radio even as the pandemic changed the lives of everyone in downstate Illinois.

We are able to serve you radio and television programs, educational curriculum, online resources, and much more created especially for people who live in central Illinois, thanks to the support of Friends like you.

You've sent us notes and emails and left comments about our programs and projects, too, describing our work as challenging, uplifting, thought-provoking, and important, while also calming and peaceful.

Hearing from you and knowing that our projects and programs have connected you to the world outside of central Illinois, enriched your child's learning experiences, or provided a much needed respite from the demands of your day, makes me feel grateful for the time you spend with us, and for the financial support you give. This November when the world seems so different, I'm especially grateful for our Friends.



Moss Bresnahan, President and CEO
Twitter: @MossILMedia



Thank you

While working primarily from home, reporters and producers from Illinois Public Media have been busy creating new programs for you to enjoy and reflect upon this past few months. And in this season of thankfulness, we want to thank the many partners who have worked with us to create these programs.

We are grateful to our area school superintendents and social work professionals, to our police chiefs and mayors, local activists and policy makers who have appeared on our Facebook Live events.

We want to acknowledge the thoughtful, gracious, funny, and open-hearted sharing of fellow central Illinoisans who recorded their thoughts and experiences on their cell phones during the early days of the shutdown, which allowed us to stitch their personal stories together to create our **American Portrait: Central Illinois** special.

Here's a thank you for the quick "yes" responses from the Champaign-Urbana Symphony, Illinois Symphony Orchestra, Millikin-Decatur Symphony Orchestra, and Sinfonia da Camera, who provided recordings of their most recent concerts to **Prairie Performances**. We played "all new" concerts in August and September on FM 90.9's long running series, which is committed to

highlighting brilliant performances from central Illinois musicians.

Thank you to the League of Women Voters of Champaign County and WCIA-TV for partnering with us on the first live debate for the 13th Congressional District on October 5. WILL negotiated the terms with the campaigns of Rep. Rodney Davis and Betsy Dirksen Londrigan and produced the debate that originated from WCIA-TV's studios in Champaign. Brian Mackey, host of **The 21st** talk show from Illinois Public Media, served as debate moderator. Reporters from around the region asked questions of the candidates remotely.

And of course special thanks goes to YOU. We are grateful to you for participating in our work by sending questions to IllinoisNewsroom.org, joining **The 21st's** text club, and calling or tweeting the team at **The 21st**, and emailing Vincent Trauth with your favorites to play on WILL-FM's **Classics By Request**.

Even while it's not possible to connect in person, it's been marvelous to connect with you and the community. We've felt even more keenly these last few months that we are your source for public media, and November felt the perfect time to thank you for making us your public media station.

A Disney princess takes the stage



Great Performances

presents a concert from the Sydney Opera House performed by the internationally acclaimed Lea Salonga and the Sydney Symphony Orchestra featuring selections from her Broadway and Disney career. Salonga is an award-winning actress and singer renown across the world for her powerful voice and perfect pitch. She is best known for her Tony Award winning role in *Miss Saigon*. In addition to the Tony, she has won the Olivier, Drama Desk, Outer Critics Circle, and Theatre World Awards in the field of musical theatre. Many fans of all ages recognize Salonga as the singing voice of Princess Jasmine from *Aladdin* and Fa Mulan from *Mulan* and *Mulan II*. For her portrayal of the beloved princesses, the Walt Disney Company bestowed her with the honor of "Disney Legend." *Lea Salonga in Concert* airs at 8 pm Friday, November 27.

MASTERPIECE™

MASTERPIECE Theatre began its incredible 50-year run on January 10, 1971, becoming the longest-running, most perennially watched weekly drama series in American television history. **MASTERPIECE—50 Fabulous Years!** is a celebration of the iconic PBS series originally called **MASTERPIECE Theatre**—the riveting stories, fabulous acting, magnificent costumes, and the program's astonishing ability to transport us to another time and place. The special features in-depth interviews with Julian Fel-

lowes, writer and creator of **Downton Abbey**; Daisy Goodwin, writer and creator of **Victoria**; Rebecca Eaton, executive producer of **MASTERPIECE** for 35 years; Susanne Simpson, current executive producer of **MASTERPIECE**; award-winning actor Robin Ellis who starred in both **Poldark** series; Phyllis Logan best known to Americans for her portrayal of Mrs. Hughes on **Downton Abbey**; and many others. The special premieres at 7 pm Sunday, November 29.

Ken Burns: Here & There is a poetic and personal look inside the legendary filmmaker's life and four-decade career. Footage of Burns at work and at home, interviews with close collaborators, and the profound observations of Burns himself provide illuminating insights into the man. **Ken Burns: Here & There** airs at 7 pm Monday, November 30.

Burns reveals his life's path, from struggling young filmmaker to award-winning director and producer of some of the most acclaimed historical documentaries ever made, including the Academy Award-nominated **Brooklyn Bridge** in 1981, **The Civil War**, **Baseball**, **Jazz**, **The National Parks**, **Country Music**, and **The Vietnam War**.

The importance of belonging, community and a sense of place emerge as themes in his life. He reflects on his own geographic touchstones, from the Brooklyn Bridge to the tiny town of Walpole, New Hampshire, the safe harbor where he arrived in 1979 and has lived and worked in "splendid isolation" since. Behind-the-scenes video gives an inside look at the filmmaker's process and attention to detail, from sound mixing to scoring sessions with musicians like Yo-Yo Ma to recording the voices of Edward Hermann, Josh Lucas, Paul Giamatti, the late Eli Wallach, and others as they bring characters to life.

Our nation's filmmaker



Burns believes that film has the power to inspire people to action. He relates the impact of a New York Times story about an Idaho family who came to the city and walked the Brooklyn Bridge because "they'd seen a documentary on public television" about it. And the joy he felt when the US Secretary of the Interior called to report that attendance had increased by 15 million visitors after **The National Parks** aired. "That was more than a third of our audience," says Burns, "who got up off their duffs and went out and did something."

"Crime may not pay, but politics sure does"

Hugh Laurie (*House*, *Veep*) stars as a scheming politician in **Roadkill**, a taut scripted drama, airing on **MASTERPIECE** at 8 pm Sundays, November 1-22. Laurie plays Peter Laurence, a self-made former furniture salesman who has risen to the heights of the British government thanks to a natural gift for populism, and a forceful nature, all while excelling at walking the tightrope of Machiavellian party politics. As *Roadkill* opens, he has just won a libel suit against reporter Charmian Pepper, who accused him of accepting payments to help privatize the National Health Service. Saved from being "roadkill" by his legal team, Peter stays in the good graces of the devious prime minister Dawn Ellison, who fears his popularity but is aware of the abundant skeletons, both public and private, in his closet. **Roadkill's** storyline involves the rattling of some of those skeletons and Peter's desperate attempts to deal with the consequences and outrun his own secrets.



WEEKDAYS

6 am

NPR Morning Edition

with Steve Inskip, Rachel Martin, David Greene, and Noel King

9 am

Classic Mornings with Vic Di Geronimo

Join Vic for music and companionship and make each morning a classic morning!

Noon

Afternoon Classics

NPR News Headlines at 12:01, 1:01, and 3:01.

5 pm

NPR All Things Considered

with Ailsa Chang, Audie Cornish, Mary Louise Kelly, and Ari Shapiro

6 pm Monday-Thursday

The 21st

with Brian Mackey

7 pm

The Evening Concert

Great performances from the great concert venues. Also on Sundays from 7-9. Listings are subject to change.

Monday:

The New York Philharmonic This Week

- 11/2 **Mozart's "Great" C Minor Mass**
Emmanuel Ax, piano
Mozart: Piano Concerto No. 22 in Eb, K482
Mozart: Mass in C Minor, "Great"
- 11/9 **Rachmaninoff and Respighi**
Vladimir Horowitz, piano
Rachmaninoff: Piano Concerto No. 3
Respighi: Feste Romana
- 11/16 **Beethoven and Britten**
Simone Lamsma, violin
Britten: Violin Concerto
Beethoven: Symphony No. 5
- 11/23 **Strauss' "Till Eulenspiegel..."**
Lorin Maazel, conductor:
R. Strauss: An Alpine Symphony
R. Strauss: Till Eulenspiegel's Merry Pranks
- 11/30 **Mozart and Brahms**
Julia Fischer, violin
Mozart: Violin Concerto No. 5, "Turkish"
Brahms: Symphony No. 1

Tuesday:

Chicago Symphony Orchestra

- 11/3 **Illinois Public Media Election Coverage 2020**
- 11/10 **Muti conducts Beethoven and Gershwin**
Jennifer Gunn, piccolo
Vivaldi: Piccolo Concerto in C Major, RV 444
Benshoof: Concerto in Three Movements for Piccolo and Orchestra
Beethoven: Symphony No. 2 in D Major, Op. 36
Charles Vernon, trombone
Stephenson: Bass Trombone Concerto
Gershwin: An American in Paris
- 11/17 **Daniel Barenboim conducts Bruckner 4**
Wagner: Overture to "The Flying Dutchman"
Schoenberg: Transfigured Night, Op. 4
Bruckner: Symphony No. 4 in E-flat Major

- 11/24 **Muti conducts Mozart, Strauss, and Liszt**
Mozart: Symphony No. 34 in C Major, K. 338
Strauss: Aus italien, Op. 16
Mozart: Symphony No. 25 in G Minor, K. 183
Liszt: Les Préludes

Wednesday:

Cleveland Orchestra

- 11/4 Herbert Blomstedt, conductor
Bruckner: Symphony No. 5 in B-flat
- 11/11 George Szell, conductor
Weber: "Oberon" Overture
Mozart: Symphony No. 40 in G, K 550
Beethoven: Symphony No. 3 in E-flat, Op. 55 "Eroica"
- 11/18 Pierre Boulez, conductor
Misha Dichter, piano
Handel: Concerto Grosso in G, "Alexander's Feast"
Brahms: Piano Concerto No. 1 in D, Op. 15
Prokofiev: Scythian Suite
- 11/25 Cleveland Orchestra Youth Orchestra
Vinay Parameswaran, conductor
Annie Zhang, cello
Snider, Sarah Kirkland: Something for the Dark
Shostakovich: Cello Concerto No. 1 in E-flat
Sibelius: Symphony No. 2 in D, Op. 43

Thursday:

Collector's Corner with Henry Fogel

- 11/5 **Fritz Wunderlich—Swiss Radio Lieder Recordings**
A compilation of broadcasts of songs by Brahms, Schubert, Beethoven, Wolff, Strauss and Schumann.
- 11/12 **The Berlin Philharmonic's release of Furtwängler Broadcasts, 1939-1945: Program 1**
Strauss: Don Juan
Schumann: Cello Concerto
Tibor de Machula, cello
Beethoven: Symphony No. 7
- 11/19 **The Berlin Philharmonic's release of Furtwängler Broadcasts, 1939-1945: Program 2**
Gluck: Overture to "Alceste"
Beethoven: Symphony No. 9
- 11/26 **Thanksgiving Holiday Special: Giving Thanks: A Celebration of Fall, Food, and Gratitude.**
"Giving Thanks" brings music and stories together for thoughtful reflection on the meaning of the holiday.

Friday:

Prairie Performances

- with Roger Cooper
Concerts are subject to availability.
- 11/6 Champaign-Urbana Symphony
Stephen Alltop, conductor
Rachel Barton Pine, violin
"Magical Delights"
Mozart: The Magic Flute Overture
Barber: Concerto for Violin and Orchestra, Op 14
Smetana: The Bartered Bride Overture
Dvorak: Symphony No.8 Op 88
- 11/13 Eastern Illinois University Choral Ensembles
Richard Robert Rossi, conductor
"Songs of Love"
- 11/20 Millikin-Decatur Symphony
Sergey Bogza, conductor
Amy Catron, cello
"Masterworks V"
Golijov: "Azul" for Cello, Obbligato Group, and Orchestra
Dvorak: Symphony No. 9, "From the New World"

11/27 Illinois Symphony
Ken Lam, conductor
Ruth Marshall, cello
"Rock Me Amadeus"
Mozart: Symphony No.1 in Eb
Mozart: Variations on a Rococo Theme
Mozart: Symphony No. 41 in C Major "Jupiter"

9 pm

Night Music

Andrea Blain, Scott Blankenship, and Steve Seel keep you company through the night and into the morning.
NPR News Headlines at 9:01.

SATURDAYS

7 am

NPR Weekend Edition

with Scott Simon

9 am

Classics By Request

Submit requests to Vincent Trauth at classreq@willinois.edu or leave a message at **217-265-5064**.

11 am

Classics of the Phonograph

John Frayne's weekly exploration of memorable recordings from the 20th century.

- 11/7 Ernest Ansermet: Trailblazing Conductor of Ravel, Debussy, and Stravinsky
- 11/14 Evgeni Kissin, Pianist
- 11/21 Pierre Monteux, Frenchman in San Francisco
- 11/28 Thanksgiving and Family Matters: Richard Strauss's "Sinfonia Domestica"

Noon

Afternoon at the Opera

The operas in the WFMT Series for this month are from Opera Southwest, and the Royal Opera House, Covent Garden.

- 11/7 Scalia/Ginsburg (Derrick Wang). Sara Jobin, cond., with Jennifer Zetlan (Justice Ruth Bader Ginsburg), Brian Cheney (Justice Antonin Scalia), Ben Wager (Commentator), and the Opera Delaware Orchestra.
Trial by Jury (Gilbert and Sullivan). Sara Jobin, cond., with Ben Lowe (The Learned Judge), Anais Naharro-Murphy (Angelina, the Plaintiff), Colin Doyle (Edwin, the Defendant), and the Opera Delaware Orchestra.
- 11/14 Tosca (Puccini). Riccardo Chailly, cond., with Anna Netrebko (Floria Tosca), Francesco Meli (Mario Cavaradossi), Luca Salsi (Baron Scarpia), Carlo Cigni (Cesare Angelotti), Alfonso Antoniozzi (Sacristan), and the La Scala, Milan, Ensemble.
- 11/21 Il Turco in Italia (Rossini). Diego Fasolis, cond., with Alex Esposito (Selim), Rosa Feola (Donna Fiorilla), Giulio Mastrototaro (Don Geronio), Edgardo Rocha (Don Narciso), and the La Scala, Milan, Ensemble.
- 11/28 Cavalleria Rusticana (Mascagni). Henrik Nánási, cond., with Elena Pankratova (Santuzza), Roberto Alagna (Turiddu), Maria Luisa Corbacho (Mamma Lucia), Gabriele Viviani (Alfio), Mercedes Gancedo (Lola), and the Gran Teatre del Liceu, Barcelona, Ensemble.
Pagliacci (Leoncavallo). Henrik Nánási, cond., with Roberto Alagna (Canio), Aleksandra Kurzak (Nedda), Gabriele Viviani (Tonio), Vincenc Esteve (Beppe), Duncan Rock (Silvio), and the Gran Teatre del Liceu, Barcelona, Ensemble.

4 pm

NPR All Things Considered

with Michel Martin

5 pm

Performance Today Weekend

Host Fred Child presents a two-hour weekly program that features classical music in concert from American Public Media studios and sites across the nation and around the world, as well as classical music news, interviews and features. **[Also Sundays at 2]**

7 pm

The Midnight Special

Marilyn Rea Beyer offers listeners a lively potpourri of folk, Celtic and bluegrass, show and novelty tunes, and hilarious comedy routines.

9 pm

American Parlor Songbook

JP Houston and Julie Van Dusen feature clever songs, charming stories, and hilarious sketches every week.
NPR News Headlines at 9:01.

10 pm

Classics All Night

NPR News Headlines at 10:01

SUNDAYS

7 am

NPR Weekend Edition

with Lulu Garcia-Navarro

9 am

Sunday Baroque

Hosted by Suzanne Bona. **NPR News Headlines** at 9:01 and 10:01.

1 pm

The Record Shelf

2 pm

Performance Today Weekend

4 pm

NPR All Things Considered

with Michel Martin

5 pm

Classical Music

7-8 pm

The Evening Concert

The Chamber Music Society of Lincoln Center

- 11/1 **Mozart/Strauss**
Mozart: Piano Trio in B-flat Major, K. 502
Strauss: Violin Sonata in E-flat Major, Op. 18
- 11/8 **The Bach Effect**
Bach: Concerto in D Minor for Keyboard, Strings, and Continuo, BWV 1052
Mendelssohn: Sextet in D Major for Piano, Violin, Two Violas, Cello, and Bass, Op. 110
- 11/15 **Responding to Beethoven**
Beethoven: Trio in C Minor for Violin, Viola, and Cello, Op. 9, No. 3
Schubert: String Quartet in E-flat Major, D. 87
- 11/22 **French and German Masters**
Saint-Saëns: Violin Sonata No. 1 in D Minor
Schumann: Dichterliebe for Voice and Piano

WEEKDAYS

6–9 am

Classical Music

9 am–noon

**Classic Mornings
with Vic Di Geronimo**

Join Vic for music and companionship and make each morning a classic morning!

Noon–overnight

Classical Music

Friday 7-9 pm

Prairie Performances

Roger Cooper presents regional concerts from the WILL listening area.

SATURDAYS

7–9 am

Classical Music

9–11 am

Classics by Request

Vincent Trauth plays requests at this time each Saturday. Submit requests at classreq@illinois.edu or leave a message at 217-265-5064.

11 am–noon

Classics of the Phonograph

John Frayne's weekly exploration of memorable recordings from the 20th century. See page 5 for listings.

Noon–4 pm

Afternoon at the Opera

Complete opera broadcasts followed, time-permitting, by opera previews and excerpts with host John Frayne.

4 pm–overnight

Classical Music

SUNDAYS

All day

Classical Music



Programs on WILL Radio are partially sponsored by a grant from the Illinois Arts Council, a state agency.

11/29 **Haydn and Beethoven**

Haydn: Trio in C Minor for Violin, Viola, and Cello, Op. 9, No. 3
Beethoven: Quartet in E-flat Major for Strings, Op. 74, "Harp"

8–9 pm

The Evening Concert

Early Music Now with Sara Schneider

11/1 **Music from the Baldwin Partbooks**

John Baldwin of Renaissance England is known for having copied My Ladye Nevells Booke, the anthology of keyboard music by William Byrd.

11/8 **Of Palaces and Popes**

Tonight it's music from Spain, including selections from El Cancionero de Palacio (1474-1516), performed by Hesperion XX.

11/15 **For All the Saints**

Tonight it's motets in honor of St. Basil and St. Sebastian by Jacob Obrecht and selections from Dufay's Mass for St. James the Greater

11/22 **Occitan Nights**

Tonight's show presents two recent releases of medieval love songs, including troubadour songs performed by Ensemble Céladon.

11/29 **The Lantins Brothers**

Arnold and Hugo de Lantins were among the earliest oltremontano: singers and composers from the Low Countries in the late 14th century.

9 pm

Classical Music

10 pm

Harmonia

Angela Mariani presents Baroque and early music.

NPR News Headlines at 10:01.

11 pm

The Romantic Hours

Music, poetry and romance with Mona Golabek.

midnight

Classical Music



▲ *Scalia/Ginsburg* is an opera inspired by the opinions of US Supreme Court Justices Ruth Bader Ginsburg and Antonin Scalia, airing at 12 pm Saturday, November 7 on **Afternoon at the Opera**.

Monday - Friday		Saturday		Sunday
NPR Morning Edition with Brian Moline		5:00	BBC Overnight Continued	BBC World Service
		6:00	Commodity Week	Inside Europe
		6:30	State Week in Review	
		7:00	NPR Weekend Edition	NPR Weekend Edition
1A		9:00	The Splendid Table	It's Been A Minute with Sam Sanders
		10:00	Wait Wait ... Don't Tell Me	
The 21st	Statewide (F)	11:00	Ask Me Another	Says You
Here & Now with Jason Croft		Noon	This American Life	Wait, Wait ... Don't Tell Me
		1:00	The Moth Radio Hour	The Treatment
		1:30		State Week in Review
The Closing Market Report		2:00	Radiolab	Reveal
BBC Newshour	Commodity Week (F)	2:30		
Fresh Air		3:00	TED Radio Hour	On the Media
All Things Considered with Steve Morck		4:00	All Things Considered	All Things Considered
		5:00	Science Friday	People's Pharmacy
		6:00	Big Picture Science	Travel with Rick Steves
The 21st (repeat)	Statewide (F) (repeat)	7:00	Living on Earth	To the Best of Our Knowledge
Fresh Air (repeat)		8:00	Latino USA	
BBC World Service	Science Friday (F)	9:00	Alternative Radio	American Amplified (11/1, 11/8, 11/15) New Dimensions (11/22, 11/29)
		10:00	Commonwealth Club	Le Show
		11:00	Left, Right, and Center	BBC World Service
		12:00- 5 am	BBC World Service	

Bold Listing = National/International News



AGRICULTURE

Todd Gleason, host, Closing Market Report & Commodity Week

Opening Market Report: 8:55 am; **Market Update:** 10:58 am; **Midday Market Report:** 12:58; **Closing Market Report:** 2:06. **Fridays: Commodity Week:** 2:30; **Grain Market Summary:** 4:32. To listen to archived Ag reports, sign up for the Illinois Public Media Ag E-newsletter, or download our agricultural podcasts, visit www.willag.org.



ILLINOIS PUBLIC MEDIA NEWS

Reginald Hardwick, news and public affairs director, Illinois Public Media

The news from Illinois Public Media's award-winning staff of reporters, hosts, and producers—Eunice Alpasan, Lecia Bushak, Anna Casey, Jason Croft, Dana Cronin, Lee Gaines, Christine Herman, Brian Mackey, Jim Meadows, Brian Moline, Steve Morck, and Ryan Wilde—can be heard during **Morning Edition**, **The 21st**, **Here & Now**, and **All Things Considered**.



WEATHER

MONDAY-FRIDAY

Weather forecasts from meteorologist Andrew Pritchard throughout the day.

5-6 am

Mon: Great Estates Scotland

Tue: J. Schwanke's Life in Bloom; Growing Passion/ Modern Pioneering (begins 11/24)

Wed: Make it Artsy; You Are Cordially Invited

Thu: Why Quilts Matter; Beads, Baubles, and Jewelry

Fri: For Your Home; Growing Bolder

Sat: Classical Stretch; Step It Up with Steph

Sun: Classical Stretch; Classical Stretch

6-7 am

Mon and Fri: Best of Sewing with Nancy; Paint This with Jerry Yamell

Tue: Quilting Arts; Landscapes Through Time

Wed: Knit and Crochet Now; Painting with Wilson Bickford

Thurs: Quilting Arts; Painting with Paulson

Sat: Fons & Porter's Love of Quilting;

Art of a Cowboy

Sun: It's Sew Easy; Grand View

7-8 am

Mon, Fri: This Old House; Ask This Old House

Tue, Thurs: Craftsman's Legacy; Woodsmith Shop

Wed: American Woodshop; Garage with Steve Butler

Sat: Ask This Old House; This Old House

Sun: Classical Stretch; Classical Stretch

8-9 am

Mon: Dining with The Chef; Iowa Ingredient

Tue and Thu: Mike Colameco's Real Food; Tastemakers

Wed and Fri: Neven's Spanish Food Trails;

America's Test Kitchen

Sat: P. Allen Smith's Garden Home; Growing a Greener World

Sun: Christina Cooks/New Day New Chef (begins 11/8); The Jazzy Vegetarian

9-10 am

Mon: Daytripper; Fly Brother with Ernest White II

Tue: Passion Italy; Travelscope

Wed: Burt Wolf: Travels & Traditions; Curious Traveler

Thu: Wild Travels; Travelscope

Fri: Cycle Around Japan; Travels with Darley

Sun: Trails to Oishii Tokyo; Journeys in Japan

10-11 am

Mon-Fri: Rick Steves' Europe; Best of the Joy of Painting

Sun: P. Allen Smith's Garden Home; Garden Smart

Weekend Marathons—9am-2pm Saturday;

11am-4pm Sunday

Oct. 31/Nov. 1: Storyteller in the Kitchen

Nov. 7/8: America's Test Kitchen Around the World

Nov. 14/15: Legacy List

Nov. 21/22: Thank-full

Nov. 28/29: Julia: Kitchen Queen

Monday-Friday

9:00 PBS NewsHour

10:00 Nightly Business Report

10:30 The Day

Mondays

7:00 We're Still Here (11/2); The Silent Soldier and the Portrait (11/9); Horse Relative (11/16)

8:00 Local USA (11/2, 11/9, 11/16, 11/23)

8:30 Stories from the Stage

11:00 And Now We Rise (11/2); Swamp Ghost (11/9); Art of Home: A Wind River Story (11/16); American Experience: Pilgrims (11/23); Member Favorites (11/30)

Tuesdays

7:00 America Reframed

8:00 Local, USA (11/3); Unspoken: America's Native American Boarding Schools (11/17)

8:30 Local, USA (11/3); Unspoken: America's Native American Boarding Schools (11/17)

11:00 America Reframed

Wednesdays

7:00 POV: 500 Years (11/11)

7:30 Independent Lens: Conscience Point (11/4)

8:00 Frontline (11/11, 11/18, 11/25)

11:00 POV: Tribal Justice (11/4); New Leash On Life: The K9s for Warriors Story (11/11); POV Shorts: Water Warriors (11/18); Our American Family: The Kurowskis (11/25)

11:30 Independent Lens: Jonathan Scott's Power Trip (11/18); Independent Lens: Belly of the Beast (11/25)

Thursdays

7:00 Secrets of the Dead

8:00 Medicine Woman (11/5); Rise of the Nazis (11/12, 11/19, 11/26)

11:00 NOVA

Fridays

7:00 Keep Talking (11/6); The People's Protectors (11/13); Mankiller (11/20); Secrets of Royal Travel (11/27)

8:00 First Language—The Race to Save Cherokee (11/6); Warrior Tradition (11/13); La Loche (11/20); Secrets of Royal Travel (11/27)

11:00 First Language—The Race to Save Cherokee (11/6); Warrior Tradition (11/13); La Loche (11/20); Secrets of Royal Travel (11/27)

Saturdays

7:00 African Americans: Many Rivers to Cross (11/7, 11/14, 11/21); Don't Miss Stories (11/28)

8:00 African Americans: Many Rivers to Cross (11/7, 11/14, 11/21); Stories from the Stage (11/28)

8:30 Stories from the Stage (11/28)

9:00 America Reframed (11/7, 11/14, 11/21); Stories from the Stage (11/28)

9:30 Stories from the Stage (11/28)

10:00 Independent Lens: Dawnland (11/7); We're Still Here (11/21); Stories from the Stage (11/28)

10:30 Homecoming: Sgt. Hamilton's Long Journey (11/14); Stories from the Stage (11/28)

11:00 African Americans: Many Rivers to Cross (11/7, 11/14, 11/21); Don't Miss Stories (11/28)

Sundays

7:00 Nature (11/1, 11/8, 11/15, 11/22); Member Favorites (11/29)

8:00 Racing The Rez (11/1); Medicine Game (11/8); Tending Nature (11/15, 11/22)

8:30 Tending Nature (11/15, 11/22)

9:00 Doc World (11/1, 11/8, 11/15); American Masters: N. Scott Momaday (11/22)

10:00 Smokin' Fish (11/8); Red Power Energy (11/15)

10:30 Sousa on the Rez: Marching to the Beat of a Different Drum (11/1); Badger Creek (11/22)

11:00 Nature (11/1, 11/8, 11/15, 11/22); Member Favorites (11/29)

Monday - Friday		Saturday	Sunday
Newsline	5:00	Mister Rogers' Neighborhood	Mister Rogers' Neighborhood
Body Electric (M,W,F) Sit and Be Fit (T, Th)	5:30	Arthur	Arthur
Molly of Denali	6:00	Molly of Denali	Molly of Denali
Wild Kratts	6:30	Wild Kratts	Wild Kratts
Hero Elementary	7:00	Hero Elementary	Hero Elementary
Xavier Riddle and the Secret Museum	7:30	Xavier Riddle and the Secret Museum	Xavier Riddle and the Secret Museum
Curious George	8:00	Curious George	Curious George
Daniel Tiger's Neighborhood	8:30	Daniel Tiger's Neighborhood	Daniel Tiger's Neighborhood
Daniel Tiger's Neighborhood	9:00	Daniel Tiger's Neighborhood	Daniel Tiger's Neighborhood
Elinor Wonders Why	9:30	Elinor Wonders Why	Elinor Wonders Why
Sesame Street	10:00	Motorweek	Consuelo Mack WealthTrack
Pinkalicious & Peterrific	10:30	America's Heartland	To the Contrary with Bonnie Erbe
Dinosaur Train	11:00	Mid-American Gardener	Firing Line with Margaret Hoover
Clifford the Big Red Dog	11:30	J. Schwanke's Life in Bloom	Market to Market
Sesame Street	Noon	America's Test Kitchen	11/1 12:00 Sinking Cities 1:00 Sinking Cities 2:00 Reel Midwest: On Beauty 2:30 Saving Species Together 3:00 No Passport Required 11/8 12:00 Sinking Cities 1:00 Sinking Cities 2:00 Reel Midwest: All The Queen's Horses 3:30 Florida Keys: Protecting Paradise 11/15 12:00 Unearthing Ogawa 1:00 Swamp Ghost 2:00 Reel Midwest: Stateville Calling 3:00 No Passport Required 11/22 12:00 Grandpa's War Story Goes Viral 1:00 The Silent Soldier and the Portrait 2:00 Reel Midwest: This Has Been to Space/BT Lives in the Stitch 2:30 Reel Midwest: 63 Boycott 3:00 American Experience: Pilgrims
Hero Elementary	1:00	Christopher Kimball's Milk Street Television	
Nature Cat	2:00	Kitchen Queens: New Orleans	
Wild Kratts	2:30	Dining with the Chef	
Molly of Denali	3:00	Today's Wild West	
Xavier Riddle and the Secret Museum	3:30	Make 48	
Odd Squad	4:00		
Arthur	4:30	Ask This Old House	
DW News	5:00	PBS NewsHour Weekend	
BBC World News	5:30	Rick Steves' Europe	
PBS NewsHour	6:00	Antiques Roadshow	No Passport Required
			PBS NewsHour Weekend
			The Whitney Reynolds Show
			Secrets of Britain's Great Cathedrals/The Directors (begins 11/8)

WILL Kids 24/7 on 12.2

For the full WILL Kids 24/7 schedule,
go to www.illinois.edu/tv/schedule



**See the full Create & World schedules
at will.illinois.edu/tv/schedule**

How did it happen?

In 1930, Germany was a liberal democracy, but just four years later the country was ruled by a dictator and its government was in the hands of murderers. **Rise Of The Nazis** is a powerful three-part forensic examination of what happened in those four short years. The series reveals that the Nazification of Germany was as much about ruthless personal ambition and a desire to hold onto power by more moderate politicians as it was about extreme ideology. The series also exposes the power struggles between prominent Nazis which helped transform Germany into a brutal police state, allowing Hitler to transform himself from Chancellor to all-powerful Führer of the Third Reich. **Rise of the Nazis** airs at 8 pm Tuesdays, November 10-24.



Man-made wonders of the world

In *Building Wonders*, **NOVA** presents three groundbreaking shows that investigate engineering mysteries of the ancient world with the help of dramatic hands-on experiments. In *Colosseum: Roman Death Trap* at 8 pm Wednesday, November 4, **NOVA** explores how the ancient Romans built their vast stadium so they could reenact naval battles and stage spectacles involving hundreds of gladiators and wild animals. In the middle of Jordan's parched desert, a **NOVA** team investigates the *Petra: Lost City of Stone* at 8 pm Wednesday, November 11. Once a thriving metropolis of temples, markets, and spectacular tombs carved into cliffs, how did Petra's architects supply running water to this bone-dry canyon for bathhouses, fountains, and pools? Then at 8 pm Wednesday, November 18, modern architects use medieval tools to figure out why Turkey's massive 1,500 year-old cathedral dome has survived countless earthquakes in one of the world's most violent seismic zones in *Hagia Sophia: Istanbul's Ancient Mystery*.





Get to know the many species of primates, from the familiar chimpanzee and gorilla, to the more obscure species like the owl monkey, the tamarin, the barbary macaque, and many more in a three-part miniseries from **Nature**. *Primates* premieres at 7 pm Wednesdays, November 4-18. Filmed across the globe, *Primates* combines family drama with the latest science. Discover the unexpected reason a silverback father chooses not to engage in gorilla warfare, watch macaques go bananas in pursuit of food, and learn why “King of the Swingers” is a gibbon title.

James Corden brings the funny

Great Performances presents *One Man, Two Guvnors* at 8 pm Friday, November 6. Revel in this 1960s-era comedy featuring a Tony-winning performance by James Corden. Adapted from a 1743 farce, Corden stars as Francis Henshall, a musician-turned-bodyguard trying to keep his two mobster clients apart, a tricky predicament resulting in comic mayhem.



In 2015, HGTV's *Property Brothers'* Jonathan Scott decided to power his Las Vegas home with solar in an effort to reduce his carbon footprint and explore ways that solar energy could help clients in his home-renovation work. His experiences revealed a system that seemed broken, and sparked a three-year journey of frustrating interactions with utility companies, government officials, and confusing legislation. Like Scott, many Americans have turned to solar in recent years to generate their own environmentally-friendly source of power and to cut costs. *Jonathan Scott's Power Trip* chronicles Scott's quest to gain a deeper understanding of this issue. The film from **Independent Lens** airs at 9 pm Monday, November 16.



On pledge drive days with this symbol, program start and end times may vary.

1 Sunday

- 7:00 Trouble with Maggie Cole** (TV-PG)
Season 1, part 3 of 6. Peter Cole is visibly jittery from public and press attention following Maggie's interview. Author Marcus bonds with Jill, and Maggie continues her mission to right all of her wrongs with a tense visit to local hairdresser Kelly. *Repeated 2 am 11/3.*
- 8:00 MASTERPIECE** (TV-14)
Roadkill. Season 1, part 1 of 4. See article on page 3. Having just seen off a libel case, U.K. government minister Peter Laurence faces a pair of family scandals. Could the embarrassment derail his political career? *Repeated 12 am 11/2; and 3 am 11/3.*
- 9:00 COBRA** (TV-14)
Season 1, part 5 of 6. With the crisis worsening, Fraser deals with issues in his personal life. The Prime Minister is forced to consider more extreme measures to retain control and apply order over the country. *Repeated 1 am 11/2; and 4 am 11/3.*
- 10:00 Song of the Mountains** (TV-G)
Eddy Davis / Dewey & Leslie Brown & The Carolina Gentlemen.
- 11:00 Songs at the Center** (TV-PG) (DVS)
- 11:30 Songs at the Center** (TV-PG) (DVS)

2 Monday

- 7:00 Antiques Roadshow** (TV-G)
Election Collection. Explore political items from both sides of the aisle, across the history of the United States in this special episode. *Repeated 4 am 11/4; 6 pm 11/7; and 3 am 11/8.*
- 8:00 Frontline** (TV-PG)
The Choice 2020: Trump Vs. Biden. Investigating the lives and characters of Joe Biden and Donald Trump as they compete to be president. Those who know them best reveal key moments that made both men and shape how they would lead America through a time of crisis.
- 10:00 Upstart Crow** (TV-PG)
Lord, What Fools These Mortals Be. Will is just finishing writing *A Midsummer Night's Dream*.
- 10:30 Amanpour and Company**
- 11:30 BBC World News**

3 Tuesday

- 7:00 PBS Newshour Special: Election 2020**

4 Wednesday

- 7:00 Nature** (TV-PG)
Primates: Secrets of Survival. Part 1 of 3. See article on page 11. Discover the survival strategies used by primates, often in the most unexpected places. *Repeated 3 am 11/6; and 1 am 11/8.*
- 8:00 NOVA** (TV-PG)
Colosseum—Roman Death Trap. See article on page 10. Archaeologists and engineers team up to re-create ancient Roman techniques to build a 25-foot lifting machine and trap-door system capable of releasing a wolf into the Colosseum's arena for the first time in 1,500 years. *Repeated 4 am 11/6; 12 am 11/8; and 2 am 11/11.*
- 9:00 Secrets of the Dead** (TV-PG)
Abandoning The Titanic. Join a team of investigators as they search for the identity of the captain of a 'mystery ship' that turned away from the 'unsinkable' Titanic in its darkest hour. *Repeated 1 am 11/5; 2 am 11/6; 2 am 11/8; and 1 am 11/11.*
- 10:00 Still Open All Hours** (TV-PG)
- 10:30 Amanpour and Company**
- 11:30 BBC World News**

5 Thursday

- 7:00 Mid-American Gardener** (TV-G)
Repeated 11 am 11/7.
- 7:30 Ask This Old House** (TV-G)
Installing Water Features. *Repeated 4:30 am 11/7; and 4:30 pm 11/7.*
- 8:00 Midsomer Murders** (TV-PG)
Blood on the Saddle, part 1. Season 13, part 5 of 16. A Wild West show comes to Ford Florey and a serial killer starts to eliminate villagers in a 'wild west' fashion, all related to a parcel of disputed swampland. *Repeated 8 pm 11/21.*
- 9:00 Father Brown** (TV-PG)
The Fall of the House of St Gardner. Season 8, part 9 of 10. Bunty helps her boyfriend hold a fashion show.
- 10:00 A Chef's Life** (TV-G)
More Than One Way to Skin A Catfish. Season 4, part 7 of 10. An up-close-and-personal experience with farm-raised catfish offers Vivian an enlightened perspective on the industry.
- 10:30 Amanpour and Company**
- 11:30 BBC World News**

6 Friday

- 7:00 Washington Week**
- 7:30 Firing Line with Margaret Hoover**
- 8:00 Great Performances** (TV-PG)
One Man, Two Guvnors. See article on page 11. *Repeated 1 am 11/7; and 2 am 11/9.*
- 10:30 Amanpour and Company**
- 11:30 BBC World News**

7 Saturday

- 7:00 Mum** (TV-PG)
- 7:30 Still Open All Hours** (TV-PG)
- 8:00 Midsomer Murders** (TV-PG)
The Sword of Guillaume, part 1. Season 13, part 3 of 16. When the Causton Chamber of Commerce takes a bus trip to Brighton, a serial killer swinging an ancient sword decapitates some of the members in the seaside resort.
- 9:00 Shakespeare & Hathaway-Private Investigators** (TV-PG)
In My Memory Lock'd.
- 10:00 Upstart Crow** (TV-PG)
Wild Laughter in the Throat of Death. Will Shakespeare's been working on his masterpiece.
- 10:30 Austin City Limits** (TV-PG)
John Legend & The Roots: Wake Up!
- 11:30 State & Water**
Edward David Anderson. Part 1 of 2.

8 Sunday

- 7:00 Trouble with Maggie Cole** (TV-PG)
 Season 1, part 4 of 6. As Maggie continues to seek amends with her neighbors, she makes a horrifying discovery in a confrontation with Roxanna. Gambling debts plague Alex, and the community's continued pressure on Peter threatens his job and family. *Repeated 2 am 11/10.*
- 8:00 MASTERPIECE** (TV-14)
Roadkill. Season 1, part 2 of 4. Promoted to justice minister, Peter deals with a prison riot, an angry daughter and alarming contacts from a stranger. Meanwhile, an unknown threat looms abroad. *Repeated 12 am 11/9; and 3 am 11/10.*
- 9:00 COBRA** (TV-14)
 Season 1, part 6 of 6. As the crisis reaches boiling point, Fraser and his team reach the endgame, while the Prime Minister and Anna are forced to fight for their political lives with Archie firing his first shots. *Repeated 1 am 11/9; 1 am 11/10; and 4 am 11/10.*
- 10:00 Song of the Mountains** (TV-G)
The Highwaymen—A Musical Tribute.
- 11:00 Songs at the Center** (TV-PG) (DVS)
- 11:30 Songs at the Center** (TV-PG) (DVS)

9 Monday

- 7:00 Antiques Roadshow** (TV-G)
Junk in the Trunk 10. Discover never-before-seen surprises from the Season 24 tour: an antique Scottish golf club, a 1777 William Faden Philadelphia map and Andy Warhol 'Fiesta Pig' & 'Turtle' prints. *Repeated 3 am 11/11; 2 am 11/12; and 6 pm 11/14.*
- 8:00 Antiques Roadshow** (TV-G)
Palm Springs, Calif. Part 1 of 3. Journey to Palm Springs for vintage and antique finds such as a 1965 Noah Purifoy sculpture, Carroll O'Connor's Archie Bunker coat, ca. 1970, and a Franz Bergman foundry Vienna bronze lamp from around 1920. *Repeated 4 am 11/11; and 3 am 11/15.*
- 10:30 Amanpour and Company**
- 11:30 BBC World News**

10 Tuesday

- 7:00 Finding Your Roots** (TV-PG)
War Stories. Season 6, part 13 of 16. Henry Louis Gates, Jr. explores the roots of actor Julianne Moore, comedian Bill Hader and painter Kehinde Wiley, revealing how their ancestors' military service left an indelible mark on their families—and on their country. *Repeated 4 am 11/12; and 4 am 11/16.*
- 8:00 Rise of the Nazis** (TV-PG)
Politics. Part 1 of 3. Learn the chain of events that propels Hitler from the fringes to the heart of the government. After leading a failed coup in 1923, he turns the Nazis into a legitimate, mainstream party and plots to overthrow Germany's political elite. *Repeated 3 am 11/12; 1 am 11/13; and 2 am 11/14.*
- 10:00 Mum** (TV-PG)
- 10:30 Amanpour and Company**
- 11:30 BBC World News**

11 Wednesday

- 7:00 Nature** (TV-PG)
Primates: Family Matters. Part 2 of 3. Family is everything for primates. Meet devoted monkey dads, playmate apes and tender troops. *Repeated 3 am 11/13; 1 am 11/14; and 1 am 11/15.*
- 8:00 NOVA** (TV-PG)
Petra—Lost City of Stone. The race is on to discover how nomads created this oasis of culture in one of the harshest climates on earth, and ultimately, why Petra disappeared. *Repeated 4 am 11/13; 3 am 11/14; and 12 am 11/15.*
- 9:00 Secrets of the Dead** (TV-14) (DVS)
Nero's Sunken City. Baiae... An escape for ancient Rome's powerful elite, the Las Vegas of its day. Now, follow archaeologists who are mapping underwater ruins and piecing together what life was like in this playground for the rich. *Repeated 1 am 11/12; 2 am 11/13; and 2 am 11/15.*
- 10:00 Still Open All Hours** (TV-PG)
- 10:30 Amanpour and Company**
- 11:30 BBC World News**

12 Thursday

- 7:00 Mid-American Gardener** (TV-G)
Repeated 11 am 11/14.
- 7:30 Ask This Old House** (TV-G)
All About Fireplaces. *Repeated 4:30 am 11/14; and 4:30 pm 11/14.*
- 8:00 Midsomer Murders** (TV-PG)
Blood on the Saddle, part 2. Season 13, part 6 of 16. A Wild West show comes to Ford Florey and a serial killer starts to eliminate villagers in a 'wild west' fashion, all related to a parcel of disputed swampland.
- 9:00 Father Brown** (TV-PG)
The Tower of Lost Souls. Season 8, part 10 of 10. Father Brown investigates a suicide.
- 10:00 A Chef's Life** (TV-G)
All Sunchoke Up. Season 4, part 8 of 10. Flo and Theo's pre-school class visit the restaurant for a meal where table manners are the focus.
- 10:30 Amanpour and Company**
- 11:30 BBC World News**

13 Friday

- 7:00 Washington Week**
- 7:30 Firing Line with Margaret Hoover**
- 8:00 Great Performances (TV-PG)**
Fiddler: A Miracle of Miracles. Travel through the history of the iconic musical exploring its reach across time and cultures featuring appearances by composer and lyricist Jerry Bock and Sheldon Harnick as well as famous fans including Lin-Manuel Miranda, Topol, and more. *Repeated 2 am 11/16.*
- 9:30 Beyond The Canvas (TV-PG)**
Taking The Stage. Season 1, part 2 of 4. Ultimate creative bravery is putting your work on the theater stage in front of a live audience. It takes courage and an acceptance of artistic vulnerability. Lin-Manuel Miranda, Bryan Cranston, and others share their passion for the theater. *Repeated 3:30 am 11/16.*
- 10:00 To Be Announced**
- 10:30 Amanpour and Company**
- 11:30 BBC World News**

14 Saturday

- 7:00 Mum (TV-PG)**
- 7:30 Still Open All Hours (TV-PG)**
- 8:00 Midsomer Murders (TV-PG)**
The Sword of Guillaume, part 2. Season 13, part 4 of 16. When the Causton Chamber of Commerce takes a bus trip to Brighton, a serial killer swinging an ancient sword decapitates some of the members in the seaside resort.
- 9:00 Shakespeare & Hathaway-Private Investigators (TV-PG)**
The Envious Court.
- 10:00 Upstart Crow (TV-PG)**
If You Prick Us, Do We Not Bleed? London is full of anti-immigrant rioting.
- 10:30 Austin City Limits (TV-PG)**
White Denim/Jackie Venson.
- 11:30 State & Water**
The Blank Stairs. Part 1 of 2.

15 Sunday

- 7:00 Trouble with Maggie Cole (TV-PG)**
 Season 1, part 5 of 6. Devastated Maggie heads to the local pub to obtain a room, only to face another towns person wronged by radio-gate. Becka and Maggie share a rare moment, putting things into perspective for Maggie. Karen surprises Peter in a borderline terrifying way. *Repeated 3 am 11/17.*
- 8:00 MASTERPIECE (TV-14)**
Roadkill. Season 1, part 3 of 4. Peter is the defendant at the family dinner table. As friends, family, employees and even a dead person turn against him, he follows his motto: keep moving forward. *Repeated 12 am 11/16; and 4 am 11/17.*
- 9:00 Secrets of Royal Travel (TV-PG)**
Secrets of the Royal Train. Climb aboard for an inside look at the history of the 'palace on wheels,' from its lavish past as the royal 'express of excess' to Her Majesty Queen Elizabeth's mobile home away from home. *Repeated 1 am 11/16.*

- 10:00 Song of the Mountains (TV-G)**
Emery Adeline / Jim & Lynna Woolsey / The Family Sowell.
- 11:00 Songs at the Center (TV-PG) (DVS)**
- 11:30 Songs at the Center (TV-PG) (DVS)**

16 Monday

- 7:00 Antiques Roadshow (TV-G)**
Palm Springs, Calif. Part 2 of 3. Learn more about fantastic Palm Springs finds including a 1966 Roy Lichtenstein screenprint, a NASA Apollo archive, ca. 1965, and a Tiffany Studios mosaic panel, ca. 1905. *Repeated 4 am 11/18; and 6 pm 11/21.*
- 8:00 Antiques Roadshow Recut (TV-G)**
Newport, R.I. Part 4 of 6. Travel to Rosecliff mansion in this half-hour Recut for finds like a Jean-Michel Basquiat oil stick drawing, dragon dog bronze ornaments and a 1910 Whiting & Co. silver basket. *Repeated 3:30 am 11/18; and 2 am 11/19.*
- 8:30 Generation Nation: A PBS American Portrait Story (TV-PG)**
 Explore how people in different age groups see themselves and their place in the America. Through self-shot video, they share common experiences that bind age groups together and generational differences that put them at odds with one another. *Repeated 1 am 11/17; 2:30 am 11/19; and 3:30 am 11/22.*
- 9:00 Independent Lens (TV-PG) (DVS)**
Jonathan Scott's Power Trip. See article on page 11. *Repeated 1:30 am 11/17; 2 am 11/18; and 2 am 11/22.*
- 10:30 Amanpour and Company**
- 11:30 BBC World News**

17 Tuesday

- 7:00 Finding Your Roots (TV-PG)**
Flight. Season 6, part 14 of 16. Henry Louis Gates, Jr. meets actors Scarlett Johansson and Lupita Nyong'o and chef Lidia Bastianich, whose families crisscrossed the globe to escape oppression and find opportunity. *Repeated 1 am 11/18; 4 am 11/19; and 4 am 11/23.*
- 8:00 Rise of the Nazis (TV-PG)**
The First Six Months In Power. Part 2 of 3. Discover the measures Chancellor Hitler takes to dismantle the German state. The Nazis have the power to ban free speech, books are burned, and Jewish people, gay people, and those holding anti-Nazi beliefs begin to disappear. *Repeated 3 am 11/19; and 1 am 11/20.*
- 10:00 Mum (TV-PG)**
- 10:30 Amanpour and Company**
- 11:30 BBC World News**

18 Wednesday

- 7:00 Nature (TV-PG)**
Primates: Protecting Primates. Part 3 of 3. More than half of the world's primates are under threat. Meet the scientists making groundbreaking discoveries to safeguard their future. *Repeated 3 am 11/20; and 1 am 11/22.*
- 8:00 NOVA (TV-G)**
Hagia Sophia—Istanbul's Ancient Mystery. NOVA follows the team's discoveries as they examine the building's unique structure and other ingenious design strategies that have insured the dome's survival. *Repeated 4 am 11/20; and 12 am 11/22.*

9:00 Secrets of the Dead (TV-PG)
Gangster's Gold. Join three groups of treasure hunters, armed with modern technology and newly uncovered clues, as they set out to find the lost treasure of notorious Prohibition-era gangster Dutch Schultz and solve an 85-year-old mystery. *Repeated 1 am 11/19; 2 am 11/20; and 3 am 11/21.*

10:00 Still Open All Hours (TV-PG)
 David Jason heads the cast in this one-off special revisiting the popular sitcom *Open All Hours*.

10:31 Amanpour and Company

11:30 BBC World News

19 Thursday

7:00 Mid-American Gardener (TV-G)
Repeated 11 am 11/21.

7:30 Ask This Old House (TV-G)
Happy Holidays from AskTOH. *Repeated 4:30 am 11/21; and 4:30 pm 11/21.*

8:00 Midsomer Murders (TV-PG)
The Silent Land, part 1. Season 13, part 7 of 16. Jeff Bowmaker runs a profitable business in Midsomer Magna conducting spooky night-time ghost tours. During one of the nights, the unpopular village librarian turns up dead.

9:00 Father Brown (TV-PG)
The Angel of Mercy. Season 6, part 4 of 10. Mrs McCarthy's friend dies in her sleep.

10:00 A Chef's Life (TV-G)
Heavenly Hocks. Season 4, part 9 of 10. A view behind-the-scenes reveals the hot and cold of curing ham.

10:30 Amanpour and Company

11:30 BBC World News

20 Friday

7:00 Washington Week

7:30 Firing Line with Margaret Hoover

8:00 Great Performances (TV-PG)
Irving Berlin's Holiday Inn—The Broadway Musical. Enjoy the hit Broadway adaptation of the classic 1942 movie musical, showcasing an Irving Berlin score including the Oscar-winning 'White Christmas' with big dance numbers, comedy and a hit parade of the great songwriter's famous tunes.

10:30 Amanpour and Company

11:30 BBC World News

21 Saturday

7:00 Mum (TV-PG)

7:30 Still Open All Hours (TV-PG)

8:01 Midsomer Murders (TV-PG)
Blood on the Saddle, part 1. Season 13, part 5 of 16. A Wild West show comes to Ford Florey and a serial killer starts to eliminate villagers in a 'wild west' fashion, all related to a parcel of disputed swampland.

9:00 Shakespeare & Hathaway-Private Investigators (TV-PG)
Too Cold for Hell.

10:00 Upstart Crow (TV-PG)
Sign No More. With the great fug making London too smelly to stay in Will and his friends have all come to Stratford.

10:30 Austin City Limits (TV-PG)
The Mavericks: En Espanol.

11:30 State & Water
Mindy Watkins. Part 1 of 2.

22 Sunday

7:00 Trouble with Maggie Cole (TV-PG)
 Season 1, part 6 of 6. It's the day of the village celebrations, but not everyone is in the mood. Maggie still has to make amends with Jill and Marcus, but is most concerned with reuniting with her family. A series of events could change life in Thurlbury forever. *Repeated 2 am 11/24.*

8:00 MASTERPIECE (TV-14)
Roadkill. Season 1, part 4 of 4. With the prime minister in trouble, Peter makes a shocking announcement to the nation. Is this the end for him or the start of something new? *Repeated 12 am 11/23; and 3 am 11/24.*

9:00 Secrets of Royal Travel (TV-PG)
Secrets of the Royal Flight. Take to the skies for an insider's look at the regal luxury of royal air travel. From 1936 when Edward became Britain's first reigning monarch to fly as both passenger and pilot, to the present, discover how jet-setting has defined the modern royals. *Repeated 1 am 11/23; 1 am 11/24; and 4 am 11/24.*

10:00 Song of the Mountains (TV-G)
Abby the Spoon Lady & Chris Rodrigues / Chatham Rabbits / Merle Monroe.

11:00 Songs at the Center (TV-PG) (DVS)

11:30 Songs at the Center (TV-PG) (DVS)

23 Monday

7:00 Antiques Roadshow (TV-G)
Palm Springs, Calif. Part 3 of 3. Travel to Palm Springs with ROADSHOW, featuring Charles Schreyvogel's oil A Lone Horse, ca. 1900, Disneyland hand-colored architectural elevations, ca. 1954, and a 1982 Bob Mackie beaded gown, made for Brooke Shields. *Repeated 6 pm 11/28.*

8:00 Antiques Roadshow (TV-G)
Salt Lake City, Utah. Part 1 of 3. Utah's capital city is brimming with antique and vintage finds including an 1844 "Bellows Falls" LDS church hymnal, a 1914 Olaf Carl Seltzer oil on board and a 1969 prototype Hot Wheels "Beach Bomb." *Repeated 4 am 11/25; and 2 am 11/26.*

9:00 Independent Lens (TV-PG) (DVS)
Belly of the Beast. *Repeated 2 am 11/25; 1:30 am 11/28; and 3 am 11/29.*

10:30 Amanpour and Company

11:30 BBC World News

24 Tuesday

7:00 Finding Your Roots (TV-PG)

The Impression. Season 4, part 1 of 10. Comedian Larry David and politician Bernie Sanders discover they have more in common than they thought as they trace their roots from 1940s Brooklyn back to Jewish communities in Eastern Europe. Repeated 1 am 11/25; 4 am 11/26; and 4 am 11/30.

8:00 Rise of the Nazis (TV-PG)

Night of the Long Knives. Part 3 of 3. See how Hitler finds himself caught between Germany's president and the Nazis' power base. His advisors persuade him to destroy the Nazi stormtroopers and their leader—one of his oldest friends—to make the SS Germany's only paramilitary force. Repeated 3 am 11/26; and 1 am 11/27.

10:00 Mum (TV-PG)

January.

10:30 Amanpour and Company

11:30 BBC World News

25 Wednesday

7:00 Nature (TV-G)

Santa's Wild Home. Get an intimate look at the wildlife of Lapland, a region in northern Finland, the fabled home of Santa Claus. Repeated 3 am 11/27; and 1 am 11/29.

8:00 NOVA (TV-PG)

Saving Notre Dame. When the Notre Dame cathedral caught fire in April 2019, Paris came perilously close to losing over 800 years of history. As engineers rebuild, researchers use cutting-edge technology to piece together what happened and restore the cathedral. Repeated 4 am 11/27; and 12 am 11/29.

9:00 Secrets of the Dead (TV-PG)

Building Notre Dame. Follow an investigation into the centuries-long construction of Notre Dame de Paris, uncovering the vast architectural, technical, and human challenges that played out during the turbulent history of one of the world's most celebrated buildings. Repeated 1 am 11/26; 2 am 11/27; 3 am 11/28; and 2 am 11/29.

10:00 Still Open All Hours (TV-PG)

10:30 Amanpour and Company

11:30 BBC World News

26 Thursday

8:00 Midsomer Murders (TV-PG)

The Silent Land, part 2. Season 13, part 8 of 16. Jeff Bowmaker runs a profitable business in Midsomer Magna conducting spooky nighttime 'ghost tours.' During one of the nights, the unpopular village librarian turns up dead.

9:00 Father Brown (TV-PG)

The Face of the Enemy. Season 6, part 5 of 10. Felicia finds herself blackmailed by a MI5 agent.

10:00 A Chef's Life (TV-G)

Mayo—The Mother Sauce. Season 4, part 10 of 10. Vivian holds a mayo blind taste test and a surprise brand takes top prize.

10:30 Amanpour and Company

11:30 BBC World News

27 Friday

7:00 Washington Week

7:30 Firing Line with Margaret Hoover

8:00 Great Performances (TV-G)

Lea Salonga In Concert. See article on page 2. Repeated 2 am 11/30.

9:30 Beyond The Canvas (TV-PG)

Happiness. Season 1, part 3 of 4. What does it take to be truly happy? For many artists, taking the stage or singing their hearts out is what brings ultimate joy. Learn the emotional motivation that pushes some artists to chase their dreams and leads others to decide to give it up. Repeated 3:30 am 11/30.

10:00 To Be Announced

10:30 Amanpour and Company

11:30 BBC World News

28 Saturday

7:00 Josh Groban: An Evening of Harmony

A new concert produced virtually and showcasing Josh Groban greatest hits and featuring music from his upcoming album.

8:30 Joe Bonamassa: Royal Tea Live

Joe Bonamassa hosted his final performance of 2020 during a livestream concert from the Ryman theater in Nashville, Tennessee.

9:30 Eric Clapton Crossroads Guitar Festival 2019

Eric Clapton presents the 2019 Crossroads Guitar Festival, hosted in Dallas, Texas on September 20-21. The Festival, which has become legendary in its own right, hosts performances and impromptu collaborations for the world's most legendary guitar players.

10:00 Upstart Crow (TV-PG)

The Most Unkindest Cut of All. Will has decided to write a play about the life of Julius Caesar.

10:30 Austin City Limits (TV-PG)

Rosalia.

11:30 State & Water

Jared Grabb Among Thieves. Part 1 of 2.

29 Sunday

7:00 MASTERPIECE: 50 Fabulous Years! (TV-G)

Repeated 8:30 pm 11/29; and 12:30 am 11/30.

8:30 MASTERPIECE: 50 Fabulous Years! (TV-G)

Repeated 12:30 am 11/30.

10:00 To be announced

30 Monday

7:00 Ken Burns: Here and There

See article on page 3.

8:30 Independent Lens (TV-14)

Won't You Be My Neighbor? Celebrate the legacy of icon Fred Rogers in a film from Academy Award winner Morgan Neville.

11:00 Amanpour and Company

IRR and Book Mentor Project renew funding

Illinois Radio Reader, a free service for the reading impaired community in east central Illinois, received a \$30,000 grant from the Secretary of State and State Librarian Jesse White's office. The funding guarantees that IRR's more than 80 hours of weekly programming of local newspapers and ads continues to reach those in need.



The Book Mentor Project received a \$30,000 grant from PNC Bank to continue its work in local Head Start and early childhood programs. The program distributes more than 5,000 free books a year to families to encourage building a home library and increase family reading time.



« COMING AND GOING THIS MONTH TO »



WILL | Passport



NOVEMBER HIGHLIGHTS

- **The Trouble with Maggie Cole**
- **Great Performances**
Now Hear This
Season 2
- **Thou Shalt Not Kill (Walter's Choice)**
Season 2
Stream all 12 episodes on November 19
- **Islands of Wonder**

LEAVING SOON

- **American Masters**
This is Bob Hope
- **Austin City Limits**
Janelle Monae
John Prine
Kacey Musgraves
Herbie Hancock
- **Great Performances**
The Sound of Music
- **Independent Lens**
Charm City
- **NOVA**
Killer Floods
Killer Hurricanes
- **The Durrells in Corfu**
Season 1

Go to will.illinois.edu/passport to download the PBS video app and find out how you can unlock more shows with your WILL Passport.

Interns get the full experience

Despite the challenges of COVID-19, Illinois Public Media is proud to introduce a new set of interns for the fall semester.

Through the generosity of donors, these students get to experience real-world journalism while also contributing to Illinois Public Media's daily content.

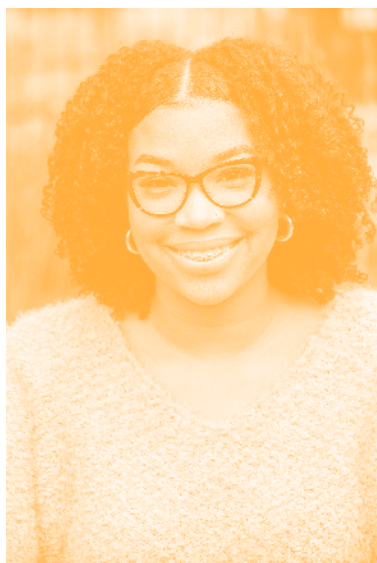


Chantal Vaca joins **The 21st** team as the latest assistant producer intern. Vaca, a native of the northwest Chicago suburbs, is working on her master's degree in journalism. "I chose to study journalism because I like to know what's going on in the world, and I love talking to people and hearing their stories."

A first-generation Mexican-American, Vaca loves cooking, playing video games, and listening to podcasts. Some favorites include **How I Built This** and **Code Switch**.

In her role as assistant producer, Vaca is producing one segment a week. "My internship is so exciting because I get to work with the host and producers of **The 21st** and plan and produce segments for the show. I was a fan of **The 21st** before I started

interning, so it's an honor to help produce it!" she said. The experience is helping Vaca hone her journalistic skills of booking guests, prepping questions and scripts, and directing the conversation during the show.



Brielle Scullark joins **The 21st** team as the 2020-2021 Robert O. Endres intern. She is also an assistant producer for the show, preparing various segments and working with guests. Scullark is a southside Chicago native with Illini in her blood. "My mom is an alumna of UIUC so the Illini spirit has been pushed on me since birth!"

A junior in journalism, Scullark's high school experience influenced her major. "I worked as a features reporter for my high school newspaper. I felt so excited to tell the interesting stories of the people I casually passed in the halls every day. In my senior year, I became the editor for the features section and hosted my own radio show with some of my friends. It was called *The Strange Show*. Those two experiences made me want to pursue journalism."

During her spare time, Scullark reads and journals, and is working on a food blog to highlight her cooking and baking talents. She also enjoys listening to podcasts, especially any involving true crime.

Premiering later this month, it's the second season of **Classical:BTS**—our popular docuseries devoted to revealing the lesser-seen and -heard stories around classical music in central Illinois. For this new season, the series is focusing on each performer's personal journey and elevating the beauty of their music with in-depth portraits of six very different performers and classical craftspeople. You can look forward to stories from cellist Nomin Zolzaya, bass performer and vocalist Tonina, conductor William McClain, and luthier Richard Brune—to name a few

"It was important to us to find six different stories bred out of vastly different experiences and backgrounds. And it was through that lens that we wanted to focus on their inner struggles to be the best they can be, and what it means to come to terms with the ups and downs of a career in music, especially in COVID times," said Sarah Edwards, director and producer of the series.

New episodes will drop monthly, and you will be able to catch them in between your favorite programs on WILL-TV and streaming anytime on the PBS Video App and will.illinois.edu/classicalBTS.

There's more to classical than meets the ear



The first installment of Season Two of **Classical:BTS** follows the journey, inspiration, and music of Acting Principal Cello for the Illinois Symphony Orchestra, Nomin Zolzaya

techline®

VISIT OUR WEBSITE:
www.techline-cu.com

Working from home these days?



Partner work spaces by Techline.



Home office spaces by Techline.

Green Street Studio, Inc. furniture and cabinetry for home and office

307 S. Locust St. Champaign, IL 61820 • 217.352.5570 • M-F: 9-4

New partnership provides students with Illinois Newsroom experience

Illinois Public Media and the College of Media have created a new collaboration to get journalism students on-the-air. Led by Professor Chris Evans, a new clinical assistant professor in the Department of Journalism, the new program allows journalism students to work directly with Illinois Newsroom reporters for editorial and professional mentorship.

It's this real-life experience that excites Evans about the new position. "The ability to be able to work in education, but actually be located in a working newsroom, is sort of beyond my wildest dreams." And he has large aspirations for his students. "My goal is to make it something where people have to attain a certain level of expertise in order to get the work and to be a beat reporter," Evans said. "You might go and be the one who is covering the school board meetings for the education reporter, while she works on bigger projects and longer-term things. But she would also be your main contact for improving your work and be a constant source of support to you."

Prior to coming to the University of Illinois, Evans worked at the University of Vermont as the student life assistant director and the student media advisor. He worked with students on the weekly newspaper, 24/7 radio station, streaming television station, and related websites. He also taught courses in news writing, media law, and leadership.

Evans received his BS in journalism and his BA in French at the University of Kansas. He also received an MA in English at the University of Central Florida, his MFA in fiction writing from New York University, and he is in the process of getting his PhD in English at



the University of Albany, which includes writing a novel. "I'm kind of addicted to education," Evans said.

He has a variety of journalism and teaching experience, but this is Evans' first time working in public radio. However, he is no stranger to the medium. "I've been listening to NPR since I was in high school. **Morning Edition** is the first thing I hear every day, and then I catch **Up First** on my morning run. I've been a fan of **Wait Wait, Don't Tell Me** since its first year on the air, and it was kind of a major event when we finally got to see the show in Chicago. We even splurged for the front-row seats."

His other teaching experience includes working as a faculty writing instructor and teaching mentor at NYU and a news advisor and communications professor at Valencia Community College. He was also the president of the College Media Association, an organization of more than 600 college media advisors.

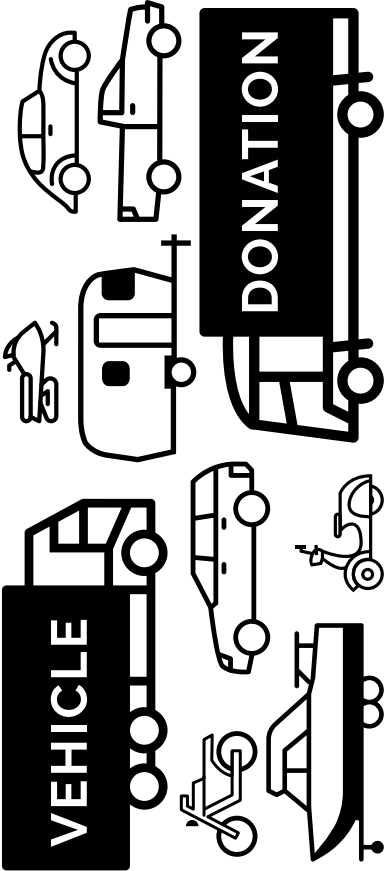
Welcome to the team, Professor Evans!

Thank you, Program Underwriters!

Private support accounts for the largest single source of funds necessary to make Illinois Public Media and the WILL stations great resources for communities across central Illinois.

We appreciate the following organizations that have stepped forward to join the individuals and families who support award-winning public media services.

Allerton Park Conference Center	Community Shares of Illinois	Prairie Rivers Network
American Guild of Organists	Corson Music	Rental City
Art Mart	Craft League of Champaign-Urbana	Riggs Beer Company
Asahel Gridley Antique Shop	CU Folk and Roots Festival	Risk Management Commodities
Audibel	Delta Dental	Rose Bowl Tavern
Beckman Institute	Doudna Fine Arts Center	St. Joseph Apothecary
Beef House	Eco Justice Collaborative	Seattle Sutton
Big Grove Tavern	Emmanuel Memorial Episcopal Church	Sew Sassy
Bloomington-Normal CVB	Farm Credit Services of Illinois	Sinfonia da Camera
BodyWork Associates	Great Value Storage	Stewart-Peterson Group Inc.
Busey	Hendrick House	St. Olaf College
C-D Overhead Doors Inc	Hickory Point Bank & Trust	Sweeney Brothers
Center for Advanced Study	Illinois Arts Council	Symphony Orchestra Guild of Decatur
Central Illinois Antique Dealers Association	Illinois Biotech Center	Techline
Central Illinois Regional Airport	Illini Mattress	Ten Thousand Villages
Champaign County Forest Preserve	Illini Pella	The Land Connection
Champaign Danville Overhead Doors	Illinois Program for Research in the Humanites	The Upper Bout
Champaign Park District	Illinois State University	Thomas-Mamer, LLP
Champaign Urbana Ballet	Illinois Symphony Orchestra	Tom Brewer Gallery
Champaign-Urbana Spinners and Weavers Guild	Institute for Sustainability iSEE	TrophyTime
Champaign-Urbana Symphony	Krannert Art Museum	U of I Department of Electrical and Computer Engineering
Cheese & Crackers	Krannert Center for the Performing Arts	U of I Extension
Christie Clinic	Makerspace Makerfest	U of I Department of Physics
City of Urbana – Market @ The Square	Meyer Capel Law Office	U of I Physics Lab Escape
Christie Clinic	Midwest Renewable Energy Association	U of I Press
Clark-Lindsey Village	Minuteman Press	Urbana Park District
Cline Center for Advanced Social Research	Mississippi Valley Blood Center	Vermilion Voles Vintage Baseball Club
Columbia Street Roastery	Monticello Railway	Virginia Theatre
Common Ground	Natural Gourmet	Vision Point Eye Center
Community Foundation	Patterson Office Supplies	Windsor of Savoy
		World Harvest
		Yoga Institute of Champaign-Urbana



**Your old vehicle can help drive
great public media programs.**

To learn more about donating your vehicle to WILL,
call 855-845-1960 or go to will.illinois.edu/cardonation.

MOVING? Let your public broadcasting membership move with you.

Fill out the form below and send it with your address label to:
Friends of WILL, 300 North Goodwin Avenue, Urbana, IL 61801-2316

Let us know six weeks in advance of moving Go to will.illinois.edu/optout to go so that we can make the proper change. green & receive Patterns digitally.

☐ Check here if you wish to remove your name from our membership list.

☐ Please update my membership with this new address:

Name _____

Street _____

City _____ State _____ Zip _____

Phone day () evening ()

**Friends of WILL
Campbell Hall
300 North Goodwin Avenue
Urbana, IL 61801-2316**

NONPROFIT
ORGANIZATION
U.S. POSTAGE PAID
CHAMPAIGN, IL
PERMIT NO. 453