

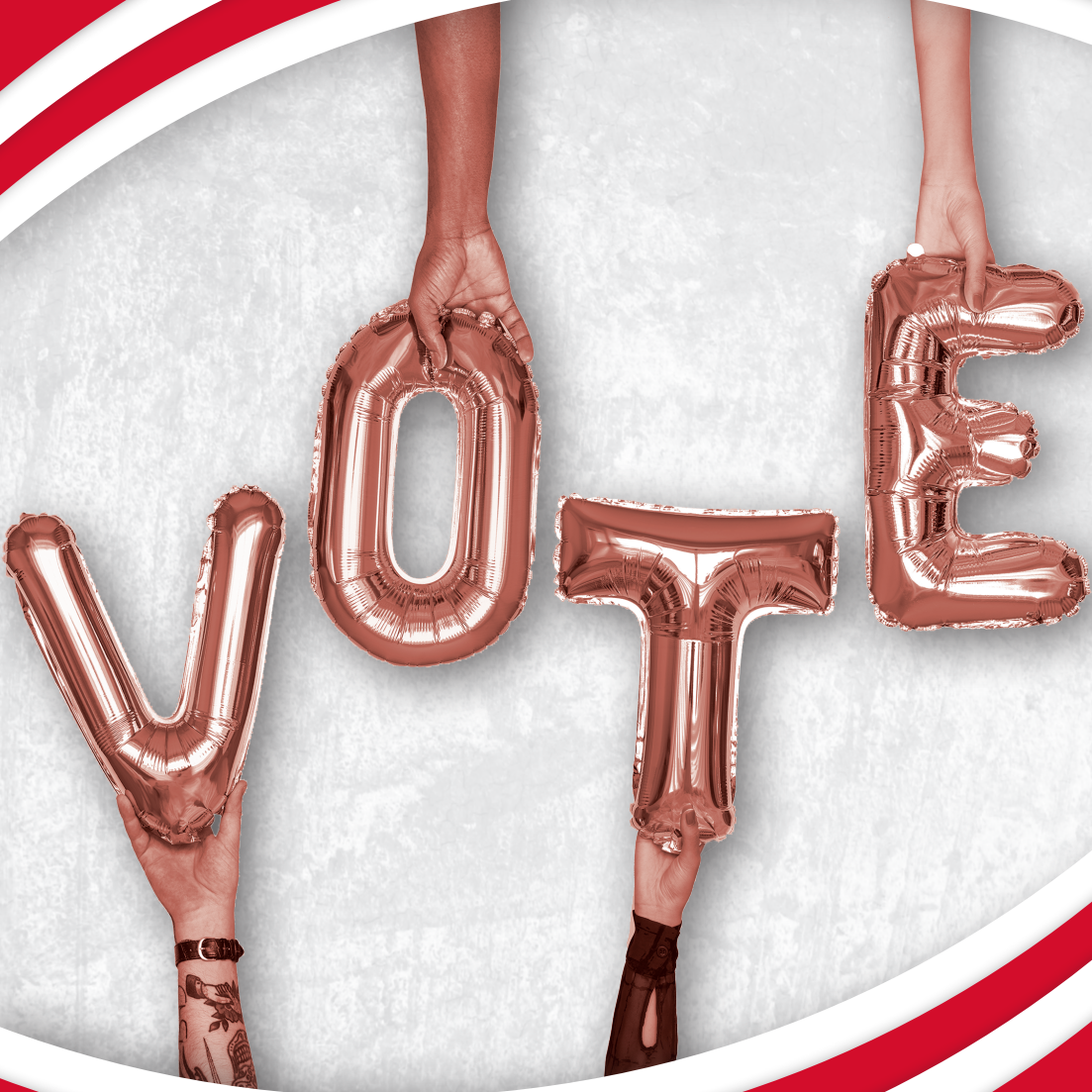
FRIENDS OF WILL MEMBERSHIP MAGAZINE

npr

PBS

# patterns

october 2018



**THE  
ELECTION  
EDITION**

***Your guide to cast  
an informed vote.***



Illinois Public Media™

WILL radio.tv.online

**Membership Hotline: 800-898-1065**

**WILL AM-FM-TV: 217-333-7300**

Campbell Hall

300 N. Goodwin Ave., Urbana, IL 61801-2316

### Mailing List Exchange

Donor records are proprietary and confidential.

WILL does not sell, rent or trade its donor lists.

### Patterns

#### Friends of WILL Membership Magazine

Editor/Art Designer: Sarah Whittington

Art Director: Kurt Bielema

Printed by Premier Print Group.



Printed with SOY INK  
on RECYCLED,  
RECYCLABLE paper.

## Radio

**90.9 FM:** A mix of classical music and NPR

information programs, including local news. (Also with live streaming on will.illinois.edu.) See pages 4-5.

**101.1 FM and 90.9 FM HD2:** Locally produced music programs and classical music from C24. (101.1 is available in the Champaign-Urbana area.) See page 6.

**580 AM:** News and information, NPR, BBC, news, agriculture, talk shows. (Also heard on 90.9 FM HD3 with live streaming on will.illinois.edu.) See page 7.

## Television

### WILL-HD

All your favorite PBS and local programming, in high definition when available. 12.1; Contact your cable or satellite provider for channel information. See pages 9-16.

### WILL Kids 24/7

Around the clock, award-winning children's programming. 12.2; also available on Comcast and Mediacom.

### WILL Create

Cooking, travel, gardening and home improvement, arts and crafts. 12.3; also available on Comcast and Mediacom. See page 8.

### WILL World

PBS documentaries, news and public affairs. 12.3; also available on Comcast and Mediacom. See page 8.

## Online

will.illinois.edu



facebook.com/WILLradiotvonline



@willpublicmedia



@willpublicmedia

## Get WILL eNews

Video previews, behind-the-scenes information, program schedule updates and more, delivered every Wednesday to your email inbox.

go.illinois.edu/WILLsubscribe

# patterns

october 2018 Volume XLVI, Number 4



It's fall in an election year, which is a time of hustle and bustle at Illinois Public Media. With headlines of "fake news" and constant criticism of the media, it is more important than ever for voters to make a well-informed choice in the various races.

You'll find that this issue of *Patterns* has everything you need to do just that. Page 1 has the details on the Illinois 13th congressional debate we will host this month, while page 2 tells you all about our joint initiative with BallotReady, where you can see your individual ballot and facts about each race and referendum. And page 3 invites you to Riggs eer Company for the latest event in our News & Brews series—The Midterm Election: What's On Your Ballot?

It's also a time of reflection for Illinois Public Media. Pages 19-20 have a member survey where we want your honest feedback on all your member benefits. Please take just a few moments to fill it out and mail it in, or go to will.illinois.edu/membersurvey and complete the survey online.

Enjoy this change in the season, Friends.

Moss Bresnahan,  
President and CEO

Twitter: @MossILMedia

# Illinois Public Media hosts debate for Illinois' 13th Congressional race

Illinois Public Media will host Republican incumbent Rodney Davis and Democrat challenger Betsy Dirksen Londrigan for an hour-long debate on Thursday, October 18. The event will be held in WILL-TV studio and broadcast live on WILL-AM 580 and WILL-FM 90.9 at 7 pm.

Moderated Niala Boodhoo, host of **The 21st**, the debate will feature questions from the constituents of the 13th District. Tune in to WILL-TV at 8 pm Monday, October 22 for the television broadcast of the debate.

If you would like to submit a question for the debate, head to [ilvotes2018.com](http://ilvotes2018.com) and follow the prompts. Questions will be chosen by the debate's editorial board.

Special thanks to our event partners:

- Illinois Newsroom
- League of Women Voters of Champaign County
- NAACP of Champaign County
- Illinois Student Government



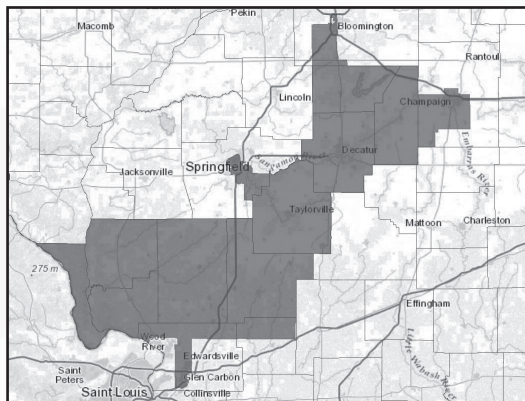
▲ Rodney Davis



▲ Betsy Dirksen Londrigan

## About the district:


Illinois' 13th Congressional District is 5,794 square miles and covers parts of Bond, Champaign, Madison, McLean, and Sangamon counties, and all of Christian, Calhoun, De Witt, Greene, Jersey, Macon, Macoupin, Montgomery, and Piatt counties. The district was redrawn in 2011, following the 2010 census, and serves 712,716 constituents.





# Are you ready to vote?

## Illinois Public Media teams up with **BallotReady**

The logo for BallotReady, featuring the words "Ballot Ready" in a white, sans-serif font. "Ballot" is on the top line and "Ready" is on the bottom line. The text is set against a dark brown rectangular background. Above the top-left corner of this rectangle is a small, dark brown triangle pointing downwards.

# Ballot Ready

Illinois Public Media has teamed up with BallotReady to ensure you cast an informed vote on November 6. Formed in 2015, BallotReady saw too many voters guess, leave blanks, or stay home from Election Day altogether due to lack of information on every race or referendum. That's why their mission is to make democracy work the way it should by informing voters of their entire ballot.

BallotReady aggregates content from candidates' websites, social media, press, endorsers, and boards of elections for comprehensive, nonpartisan information about the candidates and referendums on your ballot. They link everything back to its original source so voters can verify any piece of information, and they make every effort to confirm details with the candidates themselves, giving them the opportunity to share even more information.

BallotReady is funded by the National Science Foundation, the Knight Foundation, and the University of Chicago's Institute of Politics.

BallotReady strives to include the following information on each candidate:

- Biography—get to know candidates as you learn about their education, careers, and families.
- Stances—see what candidates are saying about issues relevant to the offices they seek.
- Endorsements—find out which organizations, newspapers, and elected officials are backing each candidate.
- News—check out the latest news about local candidates from WILL and Illinois Newsroom.

To see all the information on your ballot before November 6, go to [ilvotes2018.com](http://ilvotes2018.com) and click on the BallotReady link. Fill in your address to see the exact same ballot you will receive at your voting booth, and feel confident as you cast your vote!

Photo: Courtesy of Dark Money



## Campaign finance reform

Your vote can be bought, but at what cost? ***Dark Money*** follows Montana journalist John S. Adams who is determined to uncover the truth about funding in his state's elections. The film gains insights over the course of three election cycles as it solves an increasingly complicated and blurred puzzle. ***Dark Money*** traces Adams' steps and sheds light on the grassroots movement to unveil the mysterious financing behind our elections. The film offers numerous perspectives on dark money donations—the unlimited campaign contributions from undisclosed donors, individuals, and corporations that have been allowed since the 2010 Supreme Court ruling on Citizens United. ***Dark Money***, a **POV** film, premieres at 9 pm Monday, October 1.




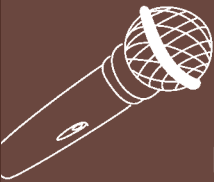
# News & Brews returns

Illinois Newsroom presents the next News & Brews event at 6 pm Tuesday, October 9. This month's gathering focuses on the midterm elections and the information you need to be an informed voter.

Featured guests will include Brian Mackey, **Statehouse** reporter at NPR Illinois, and Urbana Mayor Diane Marlin. This event is open to the general public.

*the conversations public media was made for*

# NEWS & BREWS






LET'S TALK

## THE MIDTERM ELECTIONS: WHAT'S ON YOUR BALLOT?

**TUES  
OCT 9  
6-7:30**

Riggs Beer Company  
1901 S High Cross Rd  
Urbana, IL 61802

Convening our community for stories and solutions.  
More info on Facebook. Email [kwaltrs2@illinois.edu](mailto:kwaltrs2@illinois.edu) with questions.



## weekdays

**6 am****NPR Morning Edition**

with Steve Inskeep, Rachel Martin, David Greene, and Noel King

**9 am****Classic Mornings with Vic Di Geronimo**

Join Vic for music and companionship and make each morning a classic morning!

**Noon****Afternoon Classics**

**NPR News Headlines** at 12:01, 1:01, and 3:01.

**5 pm****NPR All Things Considered**

with Ailsa Chang, Audie Cornish, Mary Louise Kelly, and Ari Shapiro

**7 pm****The Evening Concert**

Great performances from the great concert venues. Also on Sundays from 7-9 pm. Listings are subject to change.

**Monday:****The New York Philharmonic This Week**

- 10/1 Dvorak: Violin Concerto  
John Corigliano, violin  
Aaron Copland, conductor  
Herbert: Cello Concerto  
Yo Yo Ma, cello  
Kurt Masur, conductor
- 10/8 Barber: Medea's Meditation and Dance of Vengeance  
Dimitri Mitropoulos, conductor  
Schuman: In Praise of Shahn  
Leonard Bernstein, conductor
- 10/15 Tchaikovsky: Piano Concerto No. 1  
Elisabeth Leonskaja, piano  
Kurt Masur, conductor  
Tchaikovsky: Symphony No. 5
- 10/22 Berg: Lyric Suite  
Pierre Boulez, conductor  
Janacek: Glagolitic Mass  
Helga Plarczyk, soprano  
Westminster Choir
- 10/29 Rachmaninoff: Piano Concerto No. 3  
Vladimir Horowitz, piano  
Eugene Ormandy, conductor  
Respighi: Feste Romana  
Giuseppe Sinopoli, conductor

**Tuesday:****Chicago Symphony Orchestra**

- 10/2 **Riccardo Muti & Bruckner's Fourth**  
Rossini: Overture to *William Tell*  
Bruckner: Symphony No. 4 in E-flat Major  
Prokofiev: Symphony No. 1 in D Major
- 10/9 **Riccardo Muti & Schubert Mass in E-flat**  
Schubert: Mass No. 6 in E-flat Major, D. 950  
Chicago Symphony Chorus  
Duain Wolfe, director  
Amanda Forsythe, soprano
- 10/16 **Edo de Waart conducts Beethoven**  
Mozart: Horn Concerto No. 3 in E-flat Major, K. 447  
Daniel Gingrich, horn  
Beethoven: Symphony No. 2 in D Major

- 10/23 **Giovanni Antonini conducts Baroque and Classical Treasures**  
Vivaldi: Mandolin Concerto, RV 425  
Haydn: Symphony No. 103 in E-flat Major
- 10/30 **Riccardo Muti & Liszt's Dante Symphony**  
Liszt: A Symphony to Dante's *Divine Comedy*  
Alison Wahl, soprano  
Women of the Chicago Symphony Chorus)

**Wednesday:****Cleveland Orchestra**

- 10/3 Franz Welser-Möst, conductor  
Beethoven: Quartet No. 15 (for string orchestra, augmented by Welser-Möst)  
Stravinsky: The Rite of Spring
- 10/10 Concert from the Musikverein  
Franz Welser-Möst, conductor  
Debussy: Nocturnes: *Nuages et Fêtes*  
Mahler: Symphony No. 6 "Tragic"
- 10/17 Vladimir Ashkenazy, conductor  
Emanuel Ax, piano  
Beethoven: Piano Concerto No. 1  
Elgar: Enigma Variations
- 10/24 Nicholas McGegan, conductor  
Marc-André Hamelin, piano  
Mozart: Piano Concerto No. 9  
Mozart: Symphony No. 36 "Linz"
- 10/31 Franz Welser-Möst, conductor  
Staud: Stromab (a Cleveland Orchestra commission)  
Mahler: Symphony No. 9

**Thursday:****Milwaukee Symphony Orchestra**

- 10/4 Conductor: Cristian Măcelaru  
Bernstein: Overture to *Candide*  
Anna Clyne: Masquerade  
Jake Heggie: Suite from *Moby Dick*  
Beethoven: Symphony No. 7 in A Major
- 10/11 Conductor: Edo de Waart  
Katherine Young Steele, oboe  
Catherine Chen, bassoon  
Ilana Setapen, violin  
Susan Babini, cello  
Haydn: Sinfonia concertante in B-flat Major
- 10/18 Illinois 13th Congressional Debate  
featuring Republican incumbent Rodney Davis and Democrat challenger Betsy Dirksen Londrigan
- 10/25 Conductor: Edo de Waart  
Matthew Ernst, trumpet  
Copland: Quiet City  
Bernstein: Serenade  
John Adams: Harmonielehre

**Friday:****Prairie Performances**

*Concerts are subject to availability.*

Please see the schedule at [will.illinois.edu/fm/schedule](http://will.illinois.edu/fm/schedule).

**9 pm****Night Music**

Gillian Martin, Bob Christiansen, Ward Jacobson, Scott Blankenship or John Zech keep you company through the night and into the morning. **NPR News Headlines** at 9:01.

## saturdays

**7 am**

**NPR Weekend Edition**  
with Scott Simon

**9 am**

**Classics By Request**  
Submit requests to Vincent Trauth at [classreq@illinois.edu](mailto:classreq@illinois.edu) or **217-265-5064**.  
**NPR News Headlines** at 9:01.

**11 am**

**Classics of the Phonograph**  
John Frayne's weekly exploration of memorable recordings from the 20th century.

- 10/6 Ruggiero Ricci, American Violinist, and Paganini Specialist
- 10/13 Deutsche Grammophon Remembers the Mono Era (1948-1957), on 51 CDs!
- 10/20 Henry Purcell's Theatre Music
- 10/27 Fritz Busch, Conductor of Operas and Symphony Orchestras

**Noon**

**Afternoon at the Opera**  
The Los Angeles Opera broadcasts end on October 6th. The rest of the month is devoted to San Francisco Opera Broadcasts. Opera are sung in the original languages, except as noted.

- 10/6 Moby Dick (Heggie). James Conlon, cond. with Jay Hunter Morris (Captain Ahab), Joshua Guerrero (Greenhorn), Morgan Smith (Starbuck), Musa Ngqungwana (Queequeg), and the San Francisco Opera Ensemble.
- 10/13 Andrea Chénier (Giordano). Nicola Luisotti, cond. with Yonghoon Lee (Chénier), Anna Pirozzi (Maddalena), George Gagnize (Gerard) and the San Francisco Opera Ensemble.
- 10/20 The Barber of Seville (Rossini). Giuseppe Finzi, cond., with Lucas Meachem (Figaro), Daniela Mack (Rosina), René Barbera (Almaviva), Alessandro Corbelli (Doctor Bartolo), Andrea Silvestrelli (Don Basilio), and the San Francisco Opera Ensemble.
- 10/27 Don Pasquale (Donizetti). Giuseppe Finzi, cond., with Maurizio Muraro (Don Pasquale), Heidi Stober (Norina), Lawrence Brownlee (Ernesto), Lucas Meachem (Doctor Malatesta), and the San Francisco Opera Ensemble.

**4 pm**

**NPR All Things Considered**  
with Michel Martin

**5 pm**

**Performance Today Weekend**  
Host Fred Child presents a two-hour weekly program that features classical music in concert from American Public Media studios and sites across the nation and around the world, as well as classical music news, interviews and features. **[Also Sundays at 2 pm]**

**7 pm**

**The Midnight Special**  
Rich Warren presents folk music and farce, show tunes and satire, traditional and contemporary with gentle irreverence and candid observation.

**9 pm**

**American Parlor Songbook**  
JP Houston and Julie Van Dusen feature clever songs, charming stories, and hilarious sketches every week.  
**NPR News Headlines** at 9:01.

**10 pm**

**Classics All Night**  
**NPR News Headlines** at 10:01

## sundays

**7 am**

**NPR Weekend Edition**  
with Lulu Garcia-Navarro

**9 am**

**Sunday Baroque**  
**NPR News Headlines** at 9:01 and 10:01.

**1 pm**

**The Record Shelf**

**2 pm**

**Performance Today Weekend**

**4 pm**

**NPR All Things Considered**  
with Michel Martin

**5 pm**

**Classical Music**

▼ Meena Bhasin performs Schubert at the Spoleto Chamber Music Festival at 8 pm Sunday, October 14.





**willfm**

**101.1 and 90.9 HD2**

## weekdays

**6-9 am**

**Classical Music**

**9 am-noon**

**Classic Mornings**

**with Vic Di Geronimo**

Join Vic for music and companionship and make each morning a classic morning!

**Noon-overnight**

**Classical Music**

**Friday 7-9 pm**

**Prairie Performances**

(see listings page 4)

## Saturdays

**7-9 am**

**Classical Music**

**9-11 am**

**Classics by Request**

Vincent Trauth plays requests at this time each Saturday. Submit requests at [classreq@illinois.edu](mailto:classreq@illinois.edu) or 217-265-5064.

**11 am-Noon**

**Classics of the  
Phonograph**

John Frayne's weekly exploration of memorable recordings from the 20th century. See page 5 for listings.

**Noon-overnight**

**Classical Music**

## Sundays

**all day**

**Classical Music**



Programs on WILL Radio are partially sponsored by a grant from the Illinois Arts Council, a state agency.

## 7-8 pm

**The Evening Concert**

**The Chamber Music Society of Lincoln Center**

**10/7 Classical Winds**

Mozart: Serenade in E-flat Major for Winds, K. 375  
Stephen Taylor, oboe  
Beethoven: Quintet in E-flat Major for Oboe, Clarinet, Bassoon, Horn, and Piano

**10/14 Modern Masters**

Ives: Quartet No. 1 for Strings: "From the Salvation Army"  
Hindemith: Quartet for Clarinet, Violin, Cello, and Piano

**10/21 Bruch/Beethoven**

Bruch: Selections from Eight Pieces for Clarinet, Viola, and Piano, Op. 83  
Beethoven: Quartet in E-flat Major for Strings, Op. 74  
"The Harp"

**10/28 Trio and Quintet**

Beethoven: Trio in D Major for Violin, Viola, and Cello, Op. 9, No. 2  
Dohnanyi: Quintet No. 2 in E-flat Minor for Piano, Two Violins, Viola, and Cello, Op. 26

## 8-9 pm

**The Evening Concert**

**Spoleto Chamber Music Festival**

**10/7** Antonio Vivaldi: Oboe Concerto in D Minor, RV 454

James Austin Smith, oboe  
Louise Farrenc: Piano Quintet No. 1 in A Minor, Op. 30  
Inon Barnatan, piano  
Geoff Nuttall, violin  
Hsin-Yun Huang, viola

**10/14** Franz Schubert: Piano Quintet in A Major, D 667, "The Trout"

Pedja Muzijevic, piano  
Owen Dalby, violin  
Meena Bhasin, viola  
Christopher Costanza, cello  
Anthony Manzo, double bass

**10/21** Jarosław Kapuściński: Alikeless

Geoff Nuttall and Owen Dalby, violin  
Meena Bhasin, viola  
Felix Mendelssohn: Piano Trio No. 2 in C Minor, Op. 66  
Pedja Muzijevic, piano

**10/28** Bach: Concerto for Oboe and Violin in C Minor, BWV 1060

James Austin Smith, oboe  
Chausson: Concerto for Violin, Piano, and String Quartet in D Major, Op. 21  
Livia Sohn, violin  
Inon Barnatan, piano

## 9 pm

**Classical Music**

## 10 pm

**Harmonia**

Angela Mariani presents Baroque and early music.

**NPR News Headlines** at 10:01.

## 11 pm

**The Romantic Hours**

Music, poetry and romance with  
Mona Golabek.

## midnight

**Classical Music**

- Composer Anne Clyne's song "Masquerade" is performed by the Milwaukee Symphony Orchestra at 7 pm Thursday, October 4.



Monday - Friday		Saturday		Sunday
NPR Morning Edition with Brian Moline		5:00	BBC Overnight Continued	BBC World Service
		6:00	Commodity Week	Inside Europe
		6:30	State Week in Review	
		7:00	NPR Weekend Edition	NPR Weekend Edition
1A		9:00	The Splendid Table	
		10:00	Wait Wait ... Don't Tell Me	It's Been A Minute with Sam Sanders
The 21st with Niala Boodhoo	Statewide (F)	11:00	Ask Me Another	Says You
Here & Now with Jason Croft		Noon	This American Life	Wait, Wait... Don't Tell Me
		1:00	The Moth Radio Hour	The Treatment
		1:30		State Week in Review
The Closing Market Report		2:00	Radiolab	Reveal
BBC Business Daily	Commodity Week (F)	2:30		
Fresh Air		3:00	TED Radio Hour	On the Media
All Things Considered with Steve Morck		4:00	All Things Considered	All Things Considered
		5:00	Science Friday	The People's Pharmacy
		6:00	Big Picture Science	Travel with Rick Steves
The 21st (repeat)		7:00	Living on Earth	To the Best of Our Knowledge
Fresh Air (repeat)		8:00	Latino USA	
BBC World Service	Science Friday (F)	9:00	Alternative Radio	New Dimensions
		10:00	Commonwealth Club	Le Show
		11:00	Left, Right, and Center	BBC World Service
		12:00- 5 am	BBC World Service	

**Bold Listing** = National/International News

## Agriculture

### Todd Gleason, host, Closing Market Report & Commodity Week

Opening Market Report: 8:55 am; Market Update: 10:58; Midday Market Report: 12:58 pm; Closing Market Report: 2:06 pm. **Fridays: Commodity Week:** 2:36 pm; **Grain Market Summary:** 4:32 pm. To listen to archived ag reports, sign up for the Illinois Public Media Ag E-newsletter, or download our agricultural podcasts, visit [www.willag.org](http://www.willag.org)

## Illinois Public Media News

**Scott Cameron, executive editor, Illinois Newsroom**

**Brian Moline, managing editor, Illinois Public Media**

The news from Illinois Public Media's award-winning staff of reporters, hosts, and producers—Niala Boodhoo, Anna Casey, Lee Gaines, Christine Herman, Robin Linn, Jim Meadows, Brian Moline, and Alan Montecillo—can be heard during **Morning Edition**, **The 21st**, **Here & Now**, and **All Things Considered**.

## Weather

### Monday-Friday

**AM:** 6:09, 6:20, 6:35, 6:50, 7:09, 7:20, 7:35, 7:50, 8:09, 8:20, 8:35, 8:50 **PM:** 12:37, 4:06, 4:35, 5:06, 5:35

**Arts and Crafts—5-6 am; 11 am-noon**

**Sun and Wed:** Knit and Crochet Now!; Painting with Wilson Bickford

**Mon:** Quilting Arts; Paint This with Jerry Yarnell

**Fri:** Fons and Porter's Love of Quilting; Paint This with Jerry Yarnell

**Tue:** Sewing with Nancy; Best of the Joy of Painting

**Thu:** It's Sew Easy; Best of the Joy of Painting

**Cooking—6-8 am; noon-2 pm**

**Sun and Wed:** New Scandinavian Cooking; Ciao Italia; Baking with Julia; George Hirsch Lifestyle

**Mon and Fri:** Food Over 50/Ellie's Real Food (begins 10/5); Christopher Kimball's Milk Street Television; P Allen Smith Garden to Table; Julie Taboulie's Lebanese Table

**Tue:** Primal Grill/Taste of Louisiana (begins 10/18);

Steven Raichlen's Project Smoke; Dining with the Chef; Cooking with Nick Stellino/Nick Stellino:

Storyteller (begins 10/11)

**Thur:** Primal Grill/Taste of Louisiana (begins 10/18);

Steven Raichlen's Project Smoke; Mexico—One Plate

at a Time; Cooking with Nick Stellino/Nick Stellino:

Storyteller (begins 10/11)

**Travel—8-9 am; 2-3 pm**

**Sun:** Trails to Tsukui; Journeys in Japan

**Wed:** Smart Travels-Europe with Rudy Maxa; Into the Americas

**Mon and Fri:** Rhythm Abroad; Joseph Rosendo's Travelscope

**Tue and Thu:** Travels with Darley; Weekend with Yankee

**Gardening/Home Improvement—9-11 am**

**Mon:** This Old House; American Woodshop; P. Allen Smith's Garden Home; Beads, Baubles, and Jewels

**Fri:** This Old House; American Woodshop; P. Allen Smith's Garden Home; Visionkeepers

**Tue and Thu:** Rough Cut with Fine Woodworking: Woodsmith Shop; Growing a Greener World; Start Up

**Wed:** Ask This Old House; Woodwright's Shop;

Garden Smart, Craft in America

**Sun:** Ask This Old House; Woodwright's Shop;

Garden Smart; Make Your Mark

**Weekend Marathons—5-11 am Saturday;**

**11 am-5 pm Sunday**

**Oct 6/7: Sweet Italian Dreams**

Gelato, pizza, chocolate, and truffles-delizioso!

**Oct 12/13: Pati's Food and Fiesta**

Bring authentic Mexican cuisine to your kitchen.

**Oct 20/21: European Vacation**

Armchair travelers go on an unforgettable excursion.

**Oct 27/28: California Eatin'**

Spend the day on the west coast.

**Monday-Friday**

**9:00** PBS NewsHour

**10:00** Nightly Business Report

**Mondays**

**7:00** Latino Americans (10/1); Major League Cuban Baseball (10/15); Proof of Loyalty (10/29)

**7:30** Beyond La Bamba (10/8)

**8:00** Local USA (10/1, 10/8); Head of Joaquin Murrieta (10/15); Living in the Overlap (10/22); The Committee (10/29)

**8:30** Stories from the Stage

**10:30** To the Contrary with Bonnie Erbe

**11:00** Latino Americans (10/1); On Two Fronts: Latinos & Vietnam (10/8); Oceans of Pink (10/15); Silent Sacrifice (10/22); Sweden: Lessons for America? (10/29)

**Tuesdays**

**7:00** America Reframed

**8:00** Place to Stand (10/23)

**8:30** Living in the Overlap (10/2); Our American

Family: The Barreras (10/9); Karamu: 100 Years in the House (10/16)

**10:30** Global 3000

**11:00** America Reframed

**Wednesdays**

**7:00** POV Shorts (10/3); God Knows Where I Am

(10/17); Frontline: The Facebook Dilemma: Part 1 (10/31)

**7:30** POV: Dark Money (10/3); Cuba: The Forgotten Revolution (10/10)

**8:00** Frontline (10/24, 10/31)

**10:30** Focus On Europe

**11:00** POV: Dark Money (10/3); Cuba: A Lifetime of Passion (10/10); God Knows Where I Am (10/17); POV: The Apology (10/24); POV: Memories of a Penitent Heart (10/31)

**Thursdays**

**7:00** Secrets of the Dead (10/4); NOVA (10/11); Neanderthal (10/18, 10/25)

**8:00** Secrets of the Dead

**10:30** Breaking Big (10/4); GZero World with Ian

Bremmer (10/11, 10/18, 10/25)

**11:00** NOVA

**Fridays**

**8:00** Great American Read

**10:30** Asia Insight

**11:00** Frontline (10/5); Independent Lens: Dolores (10/12); Storied Life of Millie Benson (10/19); Plain-spirits (10/26)

**Saturdays**

**7:00** Annual Imagen Awards (10/6) American Experience: Circus (10/13, 10/20); Considering Matthew Shepard (10/27)

**8:00** Voces On PBS (10/6); Attakapas: The Cajun Story (10/27)

**9:00** America Reframed

**10:00** Place to Stand (10/27)

**10:30** Living in the Overlap (10/6); Our American Family: The Barreras (10/13); Karamu: 100 Years in the House (10/20)

**11:00** Annual Imagen Awards (10/6) American Experience: Circus (10/13, 10/20); Considering Matthew Shepard (10/27)

**Sundays**

**7:00** Nature (10/7, 10/14, 10/28); American Experience: Eugenics Crusade (10/21)

**8:00** Amazing Human Body (10/7); Born to Explore: Namibia-Land of Cheetahs (10/14); Good Work: Masters of the Building Arts (10/28)

**9:00** Doc World (10/7, 10/28); Reel South (10/14, 10/21)

**10:00** Reel South (10/14, 10/28); Doc World (10/21)

**10:30** Our American Family : The Barreras (10/7)

**11:00** Nature (10/7, 10/14, 10/28); American Experience: Eugenics Crusade (10/21)



Monday - Friday		Saturday	Sunday
Newsline	5:00	Mister Rogers' Neighborhood	Sid the Science Kid
Body Electric (M,W,F) Sit and Be Fit (T, Th)	5:30	Dinosaur Train	Dinosaur Train
Ready Jet Go!	6:00	Bob the Builder	Sesame Street
The Cat in the Hat	6:30	Daniel Tiger's Neighborhood	Daniel Tiger's Neighborhood
Nature Cat	7:00	Pinkalicious & Peterrific	Pinkalicious & Peterrific
Curious George	7:30	Splash and Bubbles	Splash and Bubbles
Pinkalicious & Peterrific	8:00	Curious George	Curious George
Daniel Tiger's Neighborhood	8:30	Nature Cat	Nature Cat
Daniel Tiger's Neighborhood	9:00	Ready Jet Go!	Ready Jet Go!
Splash and Bubbles	9:30	Wild Kratts	Cyberchase
Sesame Street	10:00	Motorweek	Consuelo Mack Wealthtrack
Super Why	10:30	Make48	To the Contrary
Dinosaur Train	11:00	Mid-American Gardener	Firing Line with Margaret Hoover
Peg + Cat	11:30	Growing a Greener World	Market to Market
Sesame Street	Noon	America's Test Kitchen	<b>10/7</b> 12:00 President at the Crossroads 1:00 My Dear Children 2:00 Rick Steves: The Story of Fascism in Europe <b>10/14</b> 12:00 Good Work: Masters of the Building Arts 1:00 Place to Stand 2:00 The Annual Imagen Awards <b>10/21</b> 12:00 Talent Has Hunger 1:30 Bright Lights Little City 2:00 Free: The Power of Performance <b>10/28</b> 12:00 The Invisible Man: Theater of the Mind 1:00 Werewolf of the Bayou: Theater of the Mind 2:00 Call of the Mummy: Theater of the Mind
Splash and Bubbles	12:30	Cook's Country	
Sewing Programs M: Fons & Porter's Love of Quilting Tu: Sewing with Nancy W: It's Sew Easy Th: Knit and Crochet Now F: Quilting Arts	1:00	Christopher Kimball's Milk Street Television	
Painting and How To Programs M: Woodsmith Shop Tu: Paint This with Jerry Yarnell W: Make It Artsy Th: Garden Smart F: Ask This Old House	1:30	Martha Bakes	
Nature Cat	2:00	Sara's Weeknight Meals	
Wild Kratts	2:30	Dining with the Chef	
Arthur	3:00	Stephen Raichlen's Project Fire	
Odd Squad	3:30	Curious Traveler	
Odd Squad	4:00	This Old House Hour	
DW News	4:30		
BBC World News	5:00	PBS NewsHour Weekend	PBS NewsHour Weekend
Nightly Business Report	5:30	Rick Steves' Europe	BBC Newsnight
PBS NewsHour	6:00	Antiques Roadshow	Jamestown

**WILL Kids 24/7 on 12.2**

For the full WILL Kids 24/7 schedule,  
go to [www.illinois.edu/tv/schedule](http://www.illinois.edu/tv/schedule)



See the full Create & World schedules  
at [will.illinois.edu/tv/schedule](http://will.illinois.edu/tv/schedule)



## The Bard of Avon

The fascinating history behind Shakespeare's greatest plays continues with a third series of **Shakespeare Uncovered**, premiering at 8 pm Fridays, October 12-26. The ambitious series concludes with celebrated new hosts Helen Hunt (*left*), F. Murray Abraham, Romola Garai, Brian Cox, Simon Russell Beale, and Sir Antony Sher, who seamlessly weave their personal passions with history, biography, iconic performances, and new analysis to tell the stories behind the stories of Shakespeare's famous works. The final season investigates *Much Ado About Nothing*, *The Merchant of Venice*, *Measure for Measure*, *Julius Caesar*, *The Winter's Tale*, and *Richard III*.

Watch the 3-part live event series **Autumnwatch-New England** at 7 pm Wednesday, October 17 and Thursday, October 18, and 7:30 pm Friday, October 19. Travel journalist Samantha Brown, BBC presenter Chris Packham, and wildlife cinematographer Bob Poole will host the multi-platform television experience from alongside Squam Lake, New Hampshire. The event will focus on cultural traditions and historical sites in addition to local wildlife and the colorful gold and red landscapes in the region that's best known for them.

## Nature's beauty



Photo: Courtesy of DenisTangney Jr./Getty Images

Photo: Courtesy of Kahlil Hudson



## Hot to the touch

Every summer, the American West burns. As climate change has increased, average temperatures have risen, resulting in a sudden increase in both the frequency and intensity of wildfires. Inside each of these fires are small crews who work to contain them by hand, using shovels, pickaxes, and methods that haven't changed in sixty years. Filmed during two recent wildfire seasons, **Young Men and Fire** is a sweeping yet deeply personal account of a single wildland firefighting crew as they struggle with fear, loyalty, dreams, and demons. What emerges is a rich story of working-class men—their exterior world, their interior lives, and the fire that lies between. **Young Men and Fire** kicks off the new season of **Independent Lens** at 9 pm Monday, October 29.





Photo: Courtesy of Collection of The John and Mable Ringling Museum of Art, the State Art Museum of Florida, Florida State University

## The greatest show on Earth

A transformative place for reinvention, where young women could become lion tamers and young men traveled the world as roustabouts, the circus allowed people to be liberated from the roles assigned by society and find an accepting community that had eluded them elsewhere. Drawing upon a vast and richly visual archive, and featuring a host of performers, historians and aficionados, **American Experience's *The Circus*** brings to life an era when Circus Day would shut down a town, its stars were among the most famous people in the country, and multitudes gathered to see the improbable and the impossible, the exotic and the spectacular. The two-part series airs at 8 pm Monday, October 8 and Tuesday, October 9.

## God knows where I am

The body of a homeless woman is found in an abandoned New Hampshire farmhouse. Beside the body lies a diary that documents a journey of starvation and the loss of sanity, but told with poignance, beauty, humor, and spirituality. **God Knows Where I Am**, at 9 pm Monday, October 15, explores the nearly four months Linda Bishop, a prisoner of her own mind, survived on apples and rain water, waiting for God to save her, during one of the coldest winters on record. As her story unfolds from different perspectives, including her own, we learn about our systemic failure to protect those who cannot protect themselves.



Photo: Courtesy of Wilder Film Projects



Photo: Courtesy of Wilder Film Projects

## Classic violin

From Schubert to Strauss, Bach to Brahms, Mozart to Billy Joel, Itzhak Perlman's violin playing transcends mere performance to evoke the celebrations and struggles of real life. **American Masters** presents ***Itzhak***, a new documentary that provides an intimate, cinéma vérité look at the remarkable life and career of this musician, widely considered the world's greatest violinist.

The film airs at 9 pm Sunday, October 14 and looks beyond the 16-time Grammy-winning musician to see the polio survivor whose parents emigrated from Poland to Israel, and the young man who struggled to be taken seriously as a music student when schools saw only his disability. In the film, Perlman's life story unfolds through conversations with fellow musicians and friends. ***Itzhak*** is a portrait of musical virtuosity that explores themes of Jewish identity, Jewish history, humor, and love.



## WILL-TV

### 1 Monday

- 7:00 Antiques Roadshow (TV-G)**  
*New York City, N.Y.* Part 1 of 3. Highlights include an unpublished Art Spiegelman book proposal; a headboard from the set of *The Godfather*, Part II; and an archive of rare photographic baseball cards. *Repeated 1 am 10/3; 3 am 10/6; and 6 pm 10/6.*
- 8:00 Antiques Roadshow (TV-G)**  
*New York City, N.Y.* Part 2 of 3. Highlights include a Tiffany Studios mosaic inkwell, a show run from the Beatles' first 'Ed Sullivan Show' appearance along with an autographed photograph of the band, and a Joseph Kleitsch oil painting. *Repeated 2 am 10/3; and 12 am 10/8.*
- 9:00 POV (TV-PG)**  
*Dark Money.* See article on page 2. *Repeated 3 am 10/3.*
- 10:30 Amanpour and Company**
- 11:30 BBC World News**

### 2 Tuesday

- 7:00 Great American Read (TV-PG)**  
*Villains & Monsters.* Part 5 of 8. Learn why literature's most notorious villains began behaving badly. *Repeated 1 am 10/4; and 4 am 10/4.*
- 8:00 Frontline**  
*Trump's Showdown.* Go inside Donald Trump's fight against the investigation of his presidential campaign. *Repeated 2 am 10/4.*
- 10:00 Last of the Summer Wine**
- 10:30 Amanpour and Company**
- 11:30 BBC World News**

### 3 Wednesday

- 7:00 Nature (TV-PG) (DVS)**  
*Animal Misfits.* Alongside the fastest, strongest, smartest animals are nature's misfits, odd, bizarre and unlikely creatures that at first glance seem ill-equipped for survival. *Repeated 1 am 10/3; and 4 am 10/5.*
- 8:00 NOVA (TV-G)**  
*Operation Bridge Rescue.* Follow the rebuilding of the 19th century Blenheim Covered Bridge. *Repeated 2 am 10/5; and 12 am 10/7.*
- 9:00 Secrets of the Dead (TV-PG)**  
*The Woman in the Iron Coffin.* Follow a team of forensic experts as they investigate the preserved remains of a young African American woman from 19th century New York. *Repeated 3 am 10/5; and 3 am 10/8.*
- 10:00 Last of the Summer Wine**
- 10:30 Amanpour and Company**
- 11:30 BBC World News**

### 4 Thursday

- 7:00 Mid-American Gardener (TV-G)**  
*Repeated 11 am 10/6.*
- 7:30 Ask This Old House (TV-G)**  
*Metal Railing, Tile Replacement.* *Repeated 1:30 pm 10/5.*
- 8:00 Jamestown (TV-14)**  
Season 1, part 2 of 8. Blacksmith James Read seeks to marry Alice. *Repeated 6 pm 10/7.*

- 9:00 Father Brown (TV-PG)**  
*The Rod of Asclepius.* Season 4, part 6 of 10. Lady Felicia has an accident.
- 10:00 Last of the Summer Wine**
- 10:30 Amanpour and Company**
- 11:30 BBC World News**

### 5 Friday

- 7:00 Washington Week**
- 7:30 Breaking Big (TV-PG)**  
*Jason Aldean.* Part 4 of 12. Learn how country singer Jason Aldean battled through constant setbacks early in his career, and ultimately found success in country music superstardom. *Repeated 1:30 am 10/7; and 4:30 am 10/7.*
- 8:00 Great Performances (TV-PG)**  
*Grammy Salute to Music Legends 2018.* Enjoy an all-star concert honoring Neil Diamond, Tina Turner, Queen, and other recipients of the Grammy Lifetime Achievement, Trustee and Music Educator awards. *Repeated 2 am 10/7.*
- 10:00 Last of the Summer Wine**
- 10:30 Amanpour and Company**
- 11:30 BBC World News**

### 6 Saturday

- 7:00 As Time Goes By**
- 7:30 Marley's Ghosts (TV-PG)**  
The ghosts are still in residence at Marley's home, and they're driving her up the wall and out of the house.
- 8:00 Masterpiece Classic (TV-PG) (DVS)**  
*Downton Abbey.* Season 5, part 1 of 8. Robert is snubbed by the village, while Baxter tells all, and Edith plays with fire.
- 9:30 Doctor Blake Mysteries (TV-PG)**  
*Hear The Angels Sing.* Season 5, part 8 of 8. A policeman is brutally murdered.
- 10:30 Austin City Limits (TV-PG)**  
*St. Vincent.*
- 11:30 Songs at the Center (TV-PG)**  
*Jasey Schnaars, Donna Mogavero, Matt Munhall.*

### 7 Sunday

- 7:00 Masterpiece Classic (TV-14)**  
*The Durrells In Corfu.* Season 3, part 2 of 8. When Aunt Hermione dies suddenly, Louisa has to accompany her body back to England. *Repeated 1 am 10/9; and 4 am 10/9.*
- 8:00 Masterpiece Classic (TV-PG)**  
*Poldark.* Season 4, part 2 of 8. The Poldarks determine to get their relationship on track, and the Enyses announce they're expecting a child. *Repeated 2 am 10/9; and 2 am 10/13.*
- 9:00 Masterpiece Classic (TV-PG)**  
*My Mother and Other Strangers.* Part 5 of 5. See how an unwelcome note leads to a disastrous meeting. *Repeated 3 am 10/9.*
- 10:00 Song of the Mountains (TV-G)**  
*Jeff Little Trio with Wayne Henderson.*

- 11:00 Roadtrip Nation: Room to Grow (TV-G)**  
*Make Your Own Path.* Three local students explore their futures on road trip through northwestern Texas.
- 11:30 Film-Maker (TV-PG)**  
 Cheryl Maeder's *Play* is a whimsical look into the magic of children; get lost through the endless array of books in *Labyrinth*; and in Gabriel Rhenals' *The Promotion* a young woman is all about her career.

## 8 Monday

- 7:00 Antiques Roadshow (TV-G)**  
*New York City, N.Y.* Part 3 of 3. Highlights include a Tiffany presentation watch, a 1943 Irving Berlin manuscript, and a collection of rare 1903 American Beauty-backed tobacco baseball cards. *Repeated 1 am 10/10; 4 am 10/10; 3 am 10/13; and 6 pm 10/13*
- 8:00 American Experience (TV-PG) (DVS)**  
*Circus.* Part 1 of 2. See article on page 11. Travel back to 1793 Philadelphia, when America's first circus was established, and witness its crash into American culture. The arrival of P. T. Barnum in 1871 transformed the trade, and the five Ringling brothers created a spectacle of their own. *Repeated 2 am 10/10.*
- 10:00 Last of the Summer Wine**
- 10:30 Amanpour and Company**
- 11:30 BBC World News**

## 9 Tuesday

- 7:00 Great American Read (TV-PG)**  
*What We Do for Love.* Part 6 of 8. Fall in love with some of literature's most beautiful romances and explore the many forms of love. *Repeated 1 am 10/11; 4 am 10/11; and 3 am 10/15.*
- 8:00 American Experience (TV-PG) (DVS)**  
*Circus.* Part 2 of 2. See article on page 11. See how Ringling Bros. and Barnum & Bailey merged to create a circus of more than 1,100 people and 1,000 animals, only to limp through the Great Depression against competition from radio and movies. *Repeated 2 am 10/11.*
- 10:00 Last of the Summer Wine**
- 10:30 Amanpour and Company**
- 11:30 BBC World News**

## 10 Wednesday

- 7:00 Nature (TV-PG) (DVS)**  
*Animal Reunions.* Feel the emotion as keepers and carers reunite with the wild animals that were once in their care. *Repeated 1 am 10/12; and 4 am 10/12.*
- 8:00 NOVA (TV-PG)**  
*Volcano On Fire.* Climb up the cone of Nyiragongo, one of the world's least studied volcanoes, and join volcanologists as they descend into its crater. *Repeated 2 am 10/12; and 12 am 10/14.*
- 9:00 NOVA (TV-PG)**  
*Volcano on the Brink.* Volcanologists explore Nyamuragira in central Africa. *Repeated 3 am 10/12.*
- 10:00 Last of the Summer Wine**
- 10:30 Amanpour and Company**
- 11:30 BBC World News**

## 11 Thursday

- 7:00 Mid-American Gardener (TV-G)**  
*Repeated 11 am 10/13.*
- 7:30 Ask This Old House (TV-G)**  
*Repeated 1:30 pm 10/12.*
- 8:00 Jamestown (TV-14)**  
 Season 1, part 3 of 8. A Native American is caught stealing. *Repeated 6 pm 10/14.*
- 9:00 Father Brown (TV-PG)**  
*The Missing Man.* Season 4, part 7 of 10. A pilot returns from the dead.
- 10:00 Last of the Summer Wine**
- 10:30 Amanpour and Company**
- 11:30 BBC World News**

## 12 Friday

- 7:00 Washington Week**
- 7:30 Breaking Big (TV-PG)**  
*Danai Gurira.* Part 3 of 12. See how Tony Award-nominated writer Gurira made the leap from storyteller to Hollywood superstar. *Repeated 1:30 am 10/14; and 4:30 am 10/14.*
- 8:00 Shakespeare Uncovered (TV-PG)**  
*Much Ado About Nothing with Helen Hunt.* Season 3, part 1 of 6. See article on page 10. Explore this exquisite comedy of comparison and contrast. *Repeated 2 am 10/14.*
- 9:00 Shakespeare Uncovered (TV-PG)**  
*The Merchant of Venice with F. Murray Abraham.* Season 3, part 2 of 6. The episode looks at the efforts over the years, for better or worse, to rescue Shakespeare from any taint of anti-Semitism. *Repeated 3 am 10/14.*
- 10:00 Last of the Summer Wine**
- 10:30 Amanpour and Company**
- 11:30 BBC World News**

## 13 Saturday

- 7:00 As Time Goes By**
- 7:30 Marley's Ghosts (TV-PG)**  
 The Vicar's developed an infatuation with neighbor Tina's son Gary.
- 8:00 Masterpiece Classic (TV-PG) (DVS)**  
*Downton Abbey.* Season 5, part 2 of 8. Rose hits on a strategy to get a radio in the house, while Sarah tutors Daisy.
- 9:00 Doctor Blake Mysteries (TV-PG)**  
*Family Portrait.* A groom's wedding night ends in murder.
- 11:00 Austin City Limits (TV-PG)**  
*John Prine.*

## 14 Sunday

- 7:00 Masterpiece Classic (TV-14)**  
*The Durrells In Corfu.* Season 3, part 3 of 8. Louisa and Larry arrive in England for Aunt Hermione's burial. *Repeated 1 am 10/16.*
- 8:00 Masterpiece Classic (TV-PG)**  
*Poldark.* Season 4, part 3 of 8. Ross makes his maiden speech in Parliament and finds some notoriety. *Repeated 2 am 10/16; and 2 am 10/20.*
- 9:00 American Masters (TV-PG) (DVS)**  
*Itzhak.* See article on page 11. *Repeated 3 am 10/16.*

## WILL-TV

- 10:30 Song of the Mountains (TV-G)**  
*Brandon Lee Adams/The Gravy Boys.*
- 11:30 Film-Maker (TV-PG)**  
Freddie of Wynwood features a chance encounter of two strangers, and McClintock features a stranger in the shadows.

## 15 Monday

- 7:00 Antiques Roadshow (TV-G)**  
*Santa Clara, Cal.* Part 1 of 3. Highlights include an Italian hotel proprietor's autograph book that includes signatures from John Steinbeck, Leo Tolstoy, and Mark Twain; and a collection of 1936-1939 Edward Weston photographs. *Repeated 1 am 10/17; and 6 pm 10/20.*
- 8:00 Antiques Roadshow (TV-G)**  
*Santa Clara, Cal.* Part 2 of 3. Highlights include a Lambert magician automaton that is still in working condition, a Ray Bradbury archive, and Fred Myrick scrimshaw tooth. *Repeated 2 am 10/17; and 12 am 10/22.*
- 9:00 God Knows Where I Am (TV-PG)**  
See article on page 11. *Repeated 3 am 10/17.*
- 11:00 Amanpour and Company**

## 16 Tuesday

- 7:00 Great American Read (TV-PG)**  
*Other Worlds.* Part 7 of 8. From Middle Earth to Lilliput, the trials and tribulations of these alternate universes help us to better understand our own world. *Repeated 1 am 10/18; 4 am 10/18; and 3 am 10/22.*
- 8:00 American Experience (TV-PG) (DVS)**  
*Eugenics Crusade.* Learn the story of the unlikely—and largely unknown—campaign to breed a 'better' American race. *Repeated 2 am 10/18.*
- 10:00 Last of the Summer Wine**
- 10:30 Amanpour and Company**
- 11:30 BBC World News**

## 17 Wednesday

- 7:00 Autumnwatch New England (TV-G)**  
Part 1 of 3. See article on page 10. A live event that focuses on cultural traditions and historical sites in addition to local wildlife and the colorful gold and red landscapes. *Repeated 1 am 10/19; and 4 am 10/19.*
- 8:00 NOVA (TV-PG)**  
*Addiction.* In a world in which many other diseases can be traced to addictive behavior, how do addictions work? *Repeated 2 am 10/19; and 12 am 10/21.*
- 9:00 Neanderthal**  
Part 1 of 2. Experts create a scientifically accurate 3D Neanderthal. *Repeated 3 am 10/19.*
- 10:00 Last of the Summer Wine**
- 10:30 Amanpour and Company**
- 11:30 BBC World News**

## 18 Thursday

- 7:00 Autumnwatch New England (TV-G)**  
Part 2 of 3. See article on page 10. A live event that focuses on cultural traditions and historical sites in addition to local wildlife and the colorful gold and red landscapes. *Repeated 1 am 10/20; and 4 am 10/20.*
- 8:00 Jamestown (TV-14)**  
Season 1, part 4 of 8. Alice and Silas marry. *Repeated 6 pm 10/21.*
- 9:00 Father Brown**  
*The Resurrectionists.* Season 4, part 8 of 10. A body is missing from a recent burial.
- 10:00 Last of the Summer Wine**
- 10:30 Amanpour and Company**
- 11:30 BBC World News**

## 19 Friday

- 7:00 Washington Week**
- 7:30 Autumnwatch New England (TV-G)**  
Part 3 of 3. See article on page 10. A live event that focuses on cultural traditions and historical sites in addition to local wildlife and the colorful gold and red landscapes. *Repeated 1:30 am 10/21.*
- 8:30 Shakespeare Uncovered (TV-14)**  
*Measure for Measure with Romola Garai.* Season 2, part 3 of 6. Measure for Measure takes an astonishingly timely look at sexual morality, hypocrisy and harassment. *Repeated 2:30 am 10/21.*
- 9:30 Shakespeare Uncovered (TV-14)**  
*Julius Caesar with Brian Cox.* Season 3, part 4 of 6. Shakespeare's Julius Caesar is a play that upholds liberty against tyranny. But what is tyranny? And who decides? *Repeated 3:30 am 10/21.*
- 10:30 Amanpour and Company**
- 11:30 BBC World News**

## 20 Saturday

- 7:00 As Time Goes By**
- 7:30 Marley's Ghosts (TV-PG)**  
*Dead Man's Chest.* Marley moves into her new home and receives a visit from a handsome policeman.
- 8:00 Masterpiece Classic (TV-PG) (DVS)**  
*Downton Abbey.* Season 5, part 3 of 8. Mary and Lord Gillingham put their love to the test.
- 9:00 Hillary (TV-PG)**  
*Standing Tall.* Part 1 of 6. Ed becomes fascinated with the Himalayas after reading about the range.
- 10:00 Red Dwarf Series X**
- 10:32 Austin City Limits (TV-PG)**  
*Sam Smith/Anderson East.*
- 11:30 State & Water**  
*The Accidentals.* Part 1 of 2.



## 21 Sunday

- 7:00 Masterpiece Classic (TV-14)**  
**The Durrells In Corfu.** Season 3, part 4 of 8. Larry's friend Gigi comes to visit, as does Captain Creech. *Repeated 1 am 10/23; and 4 am 10/23.*
- 8:00 Masterpiece Classic (TV-PG)**  
**Poldark.** Season 4, part 4 of 8. While George continues plotting his return to Westminster, Ross is reunited with his family at home. *Repeated 2 am 10/23; and 2 am 10/27.*
- 9:00 The Woman In White (TV-PG)**  
 Part 1 of 5. Walter Hartright encounters Anne, a woman dressed all in white, on Hampstead Heath and learns she escaped from a nearby asylum. *Repeated 3 am 10/23.*
- 10:00 Song of the Mountains (TV-G)**  
*Jesse Alexander Band / Etsiu Bluegrass Pride Band.*
- 11:00 Roadtrip Nation: Room to Grow (TV-G)**  
 Allow Yourself Time. Three students set out on a road trip through the greater Austin area to discover real-world applications for their interests in business, STEM, and education.
- 11:30 Film-Maker (TV-PG)**  
*Tears of Joi* features a mime looking for a break, and *Tesla* which follows the trials and tribulations of the famed inventor.

## 22 Monday

- 7:00 Antiques Roadshow (TV-G)**  
*Santa Clara, Cal.* Part 3 of 3. Finds include a Booker T. Washington archive, a 17th-century Chinese transitional wine pot that was mistaken for a teapot, and an Eanger Irving Couse painting. *Repeated 1 am 10/24; 3 am 10/27; and 6 pm 10/27.*
- 8:00 Illinois 13th District Representative Debate**  
 See article on page 1. *Repeated 2 am 10/24.*
- 9:00 POV (TV-PG)**  
**The Apology.** Meet three of the 200,000 former 'comfort women' kidnapped and forced into military sexual slavery by the Imperial Japanese Army during World War II. *Repeated 3 am 10/24.*
- 10:30 Amanpour and Company**
- 11:30 BBC World News**

## 23 Tuesday

- 7:00 Great American Read (TV-PG)**  
**Grand Finale.** Part 8 of 8. And the winner is... after millions of votes, find out which of the 100 nominated books is crowned America's best-loved novel. *Repeated 1 am 10/25; 4 am 10/25; and 3 am 10/29.*
- 8:00 Native America (TV-PG)**  
**From Caves to Cosmos.** Part 1 of 4. Combine ancient wisdom and modern science to answer a 15,000-year-old question: who were America's First Peoples? *Repeated 2 am 10/25.*
- 9:00 Frontline**  
**The Pension Gamble.** How state governments and Wall Street led America's public pensions into a \$4-trillion hole. *Repeated 3 am 10/25.*
- 10:00 Last of the Summer Wine**
- 10:30 Amanpour and Company**
- 11:30 BBC World News**

## 24 Wednesday

- 7:00 Nature (TV-PG)**  
**Super Cats: Extreme Lives.** Meet the planet's ultimate cats. *Repeated 1 am 10/26; and 4 am 10/26.*
- 8:00 NOVA (TV-G)**  
**Flying Supersonic.** A history of the legendary Concorde, the passenger plane that flew from the late 70s till 2003 at twice the speed of sound. *Repeated 2 am 10/26; and 12 am 10/28.*
- 9:00 Neanderthal**  
 Part 2 of 2. Experts create a scientifically accurate 3D Neanderthal. *Repeated 3 am 10/26.*
- 10:00 Last of the Summer Wine**
- 10:30 Amanpour and Company**
- 11:30 BBC World News**

## 25 Thursday

- 7:00 Mid-American Gardener (TV-G)**  
*Repeated 11 am 10/27.*
- 7:30 Ask This Old House (TV-G)**  
*Repeated 1:30 pm 10/26.*
- 8:00 Jamestown (TV-14)**  
 Part 5 of 8. Governor Yeardley is taken ill. *Repeated 6 pm 10/28.*
- 9:00 Father Brown**  
*The Sins of the Father.* Season 4, part 9 of 10. A man's son is threatened if he does not talk.
- 10:00 Last of the Summer Wine**
- 10:30 Amanpour and Company**
- 11:30 BBC World News**

## 26 Friday

- 7:00 Washington Week**
- 7:30 TBA**
- 8:00 Shakespeare Uncovered (TV-PG)**  
**The Winter's Tale with Simon Russell Beale.** Season 3, part 5 of 6. Shakespeare's *The Winter's Tale*, written during the period 1613-14, is classified as one of his late romances. *Repeated 2 am 10/28.*
- 9:00 Shakespeare Uncovered (TV-PG)**  
**Richard III with Antony Sher.** Season 3, part 6 of 6. Shakespeare's *Richard III* is one of the most infamous villains of all time—and one of the most relished. *Repeated 3 am 10/28.*
- 10:00 Last of the Summer Wine**
- 10:30 Amanpour and Company**
- 11:30 BBC World News**

## 27 Saturday

- 7:00 As Time Goes By**
- 7:30 Marley's Ghosts (TV-PG)**  
*Fit.* Marley's attempts to befriend her neighbors are disrupted.
- 8:00 Masterpiece Classic (TV-PG) (DVS)**  
**Downton Abbey.** Season 5, part 4 of 8. Lord Merton delivers a bombshell to Isobel, and Mary does likewise to Tony.
- 9:00 Hillary (TV-PG)**  
*Louise.* Part 2 of 6. Hillary falls in love with Louise, but is too shy to approach her.
- 10:00 Red Dwarf Series X**

## WILL-TV

**10:32 Austin City Limits (TV-PG)**

*Brandi Carlile.*

**11:30 State & Water**

*Alexandra Fisher. Part 1 of 2.*

## 28 Sunday

**7:00 Masterpiece Classic (TV-PG)**

**The Durrells In Corfu.** Season 3, part 5 of 8. A new Italian family takes up residence in Corfu. *Repeated 1 am 10/30; and 4 am 10/30.*

**8:00 Masterpiece Classic (TV-14)**

**Poldark.** Season 4, part 5 of 8. To his frustration, Ross faces successive failures in Westminster. *Repeated 2 am 10/30, and 2 am 11/3.*

**9:00 The Woman In White (TV-PG)**

Part 2 of 5. Walter is sent away before he can learn the truth about Anne. *Repeated 3 am 10/30.*

**10:00 Song of the Mountains (TV-G)**

*Seldom Scene.*

**11:00 Roadtrip Nation: Room to Grow (TV-G)**

*Keep Your Mind Open.* On a road trip through Dallas, high school students Sophia, Sam, and Saba meet a photographer, a medtech CEO, and a lawyer-turned-wind energy pioneer.

**11:30 Film-Maker (TV-PG)**

*Zindagi* a bittersweet tale of lost love; and *No Trespassing*, a documentary on forgotten urban spaces.

## 29 Monday

**7:00 Antiques Roadshow (TV-G)**

*Kooky to Spooky.* Celebrate Halloween with finds that are thrilling and chilling. *Repeated 1 am 10/31; and 4 am 10/31.*

**8:00 Frontline**

*The Facebook Dilemma.* Part 1 of 2. Early warnings about Facebook's impact on privacy and democracy. *Repeated 2 am 10/31.*

**9:00 Independent Lens (TV-PG)**

*Young Men and Fire.* See article on page 10. *Repeated 3 am 10/31.*

**10:00 Last of the Summer Wine**

**10:30 Amanpour and Company**

**11:30 BBC World News**

## 30 Tuesday

**7:00 TBA**

**8:00 Native America (TV-PG)**

*Nature to Nations.* Part 2 of 4. Investigate lost cities in Mexico and a temple in Peru. *Repeated 2 am 11/1.*

**9:00 Frontline**

*The Facebook Dilemma.* Part 2 of 2. Facebook's response to charges of promoting "fake news" and disrupting American politics. *Repeated 3 am 11/1.*

**10:00 Last of the Summer Wine**

**10:30 Amanpour and Company**

**11:30 BBC World News**

## 31 Wednesday

**7:00 Nature (TV-PG)**

*Super Cats: Cats In Every Corner.* Discover how cats have conquered the world. *Repeated 1 am 11/2; and 4 am 11/2.*

**8:00 NOVA (TV-14)**

*Ghosts of Murdered Kings.* Follow archaeologists and forensic experts in Ireland's County Tipperary. *Repeated 2 am 11/2.*

**9:00 Sinking Cities**

Part 1 of 4. See how cities are preparing for rising seas. *Repeated 3 am 11/2.*

**10:00 Last of the Summer Wine**

**10:30 Amanpour and Company**

**11:30 BBC World News**

## One Day Only – Pvt. Roy W. Tribute Train

**Honoring Monticello's first casualty in WWI.**

Recreating the arrival home of his body on the Illinois Central Railroad. Four steam trains starting at 11 am with soldiers riding aboard every train.

**Tickets at [www.MRYM.org](http://www.MRYM.org)**



Honor Guard of dough boys from the Illinois State Military Museum.  
Herbert Hoover's Armistice Speech as performed by Brian Fox Ellis at Noon.

Music by Barry Cloyd from Peoria at 1pm at the depot in downtown Monticello.

Sponsored by the Monticello Railway Museum, the Illinois State Military Museum and Monticello Main Street. Trains depart from the museum grounds-I-72 at Exit No. 166, Monticello, IL.

Visit the Monticello Railway Museum's website  
[www.mrym.org](http://www.mrym.org) for complete details and tickets.

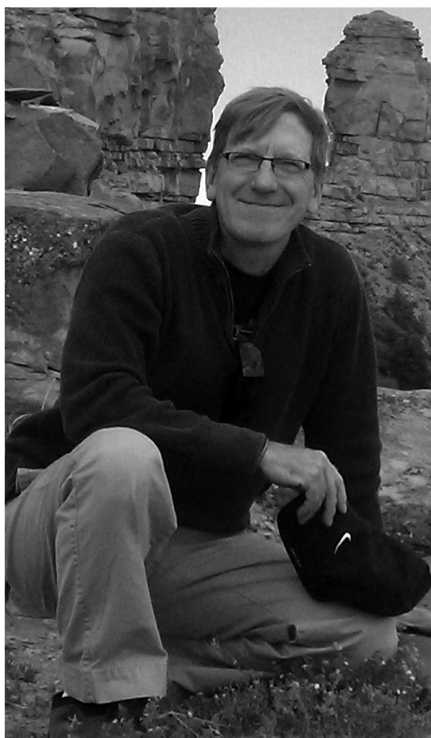


# U of I professor featured on PBS series

University of Illinois anthropology professor Dr. Timothy Pauketat is featured in an episode of the new PBS series **Native America**. The 4-part series, 8 pm Tuesdays, October 23-30 and November 13, weaves history and science with living Indigenous traditions.

Dr. Pauketat, a visiting research scientist with the Illinois State Archaeological Survey, part of the Prairie Research Institute, was approached for the third episode, *Cities in the Sky*, because of his research at the Cahokia Mounds State Historic Site—a 2,200-acre tract that contains the archaeological remnants of an ancient settlement. Located near St. Louis, Missouri, Dr. Pauketat's interest in Cahokia began as a young enthusiast, and later developed in his graduate and doctoral studies. Almost 30 years later, Dr. Pauketat is still doing field research at the mounds, investigating the beginnings of organized religion. "I was interested in the development of early cities and governments, and Cahokia represented an unsolved problem just waiting for someone asking the right research questions and then doing archaeology in the right way to answer those questions," says Dr. Pauketat.

Working with Providence Pictures to create the episode was a good experience for Dr. Pauketat, who has already been part of several documentaries and television shows. "I think the series does a great job of blending American Indian voices and materials with the interpretations of archaeologists... I'm particularly impressed with the respectful and yet informative sense of the cosmos—and people's relationships to the moving parts of the sky—that comes through in the Cahokia episode."



▲ (top) Dr. Timothy Pauketat, anthropology professor at Illinois. (bottom) Dr. Pauketat works with archaeologist Kristin Hedman in front of Cahokia's Mound 72.

## Enjoy a free screening of **Native America's Cities of the Sky**

Join Illinois Public Media for a special screening of the **Native America** episode featuring Dr. Pauketat at 7 pm Wednesday, October 10 at Spurlock Museum, followed by a panelist-led discussion. Then be sure to visit Spurlock Museum during normal business hours and explore their exhibit of flint clay figures and ceramic pottery from the Cahokia region.

# Illinois Public Media member survey

**We greatly appreciate your partnership** in making it possible for Illinois Public Media and the WILL stations to offer PBS and NPR programs, news, agricultural information, public affairs, classical music, community engagement activities, and educational resources to everyone across central Illinois.

Our goal is to provide you with helpful member benefits while also ensuring we maximize the amount of your gift that goes toward programs and services. To help us better achieve this goal, please take a few moments to provide feedback about current benefits offered to the Friends of WILL. We have included a shortened version of our member survey here for donors who would prefer to mail their responses. **However, if possible, please take the full survey online at [will.illinois.edu/membersurvey](http://will.illinois.edu/membersurvey).**

If you choose to take the printed survey on the following page (front and back), please tear it out and return it in an envelope to:

WILL Member Survey  
300 N. Goodwin Ave  
Urbana, IL 61801

**Thank you for sharing your opinions with us!**



**ILLINOIS STATE  
BAR ASSOCIATION™**

**ILLINOIS LAWYER FINDER™**

**Need legal help?**

Search our online directory for lawyers in your area  
who practice in the field of law you need.

[WWW.ILLINOISLAWYERFINDER.COM](http://WWW.ILLINOISLAWYERFINDER.COM)



**“design”**

**isn't just talk...  
it's a promise.**



**techline®**

*Functional. By design.*

[TECHLINE-CU.com](http://TECHLINE-CU.com)

**307 South Locust • Champaign • 217.352.5570  
Mon. – Fri. 9 am to 5 pm • Saturdays by appointment**





For full version of survey, go to [will.illinois.edu/membersurvey](http://will.illinois.edu/membersurvey)

## Your relationship with Illinois Public Media/WILL

**1. Of the following choices, which area(s) would you consider the *primary* basis for your financial support of Illinois Public Media and the WILL stations?**

- ☐ WILL-AM (News and information)
- ☐ WILL-FM (Classical music)
- ☐ WILL-TV
- ☐ WILL Online (Website, WILL/PBS/NPR apps, podcasts)
- ☐ Agricultural programs and information
- ☐ Educational and community engagement activities
- ☐ Streaming and WILL Passport
- ☐ Other

**2. How does being connected in each of the following ways affect your support of WILL?**

	Strengthens relationship	No impact on relationship	I'm not connected in this way
Receiving <i>Patterns</i> member magazine	<input type="radio"/>	<input type="radio"/>	<input type="radio"/>
Receiving a MemberCard	<input type="radio"/>	<input type="radio"/>	<input type="radio"/>
WILL Passport access	<input type="radio"/>	<input type="radio"/>	<input type="radio"/>
Receiving weekly eNewsletter, Aircheck	<input type="radio"/>	<input type="radio"/>	<input type="radio"/>
Being a Facebook friend	<input type="radio"/>	<input type="radio"/>	<input type="radio"/>
Following on Twitter	<input type="radio"/>	<input type="radio"/>	<input type="radio"/>
Following on Instagram	<input type="radio"/>	<input type="radio"/>	<input type="radio"/>
Receiving monthly Families eNewsletter	<input type="radio"/>	<input type="radio"/>	<input type="radio"/>

## *Patterns* member magazine

**3. How do you regard *Patterns* as a benefit of your membership in WILL?**

- ☐ Very important
- ☐ Somewhat important
- ☐ Neutral about it
- ☐ Somewhat unimportant
- ☐ Very unimportant

**4. \$5.98\* of your annual Friends of WILL donation is designated for the *Patterns* member magazine. Do you feel this is an important allocation of the station's financial resources?**

\*Includes production, printing, and mailing.

- ☐ Yes
- ☐ No

**5. Please assign value of each of the following sections of *Patterns***

	Very important	Somewhat important	Neutral	Somewhat important	Very important
FM schedule	<input type="radio"/>	<input type="radio"/>	<input type="radio"/>	<input type="radio"/>	<input type="radio"/>
AM schedule	<input type="radio"/>	<input type="radio"/>	<input type="radio"/>	<input type="radio"/>	<input type="radio"/>
Create TV schedule	<input type="radio"/>	<input type="radio"/>	<input type="radio"/>	<input type="radio"/>	<input type="radio"/>
World TV schedule	<input type="radio"/>	<input type="radio"/>	<input type="radio"/>	<input type="radio"/>	<input type="radio"/>
Daytime TV schedule	<input type="radio"/>	<input type="radio"/>	<input type="radio"/>	<input type="radio"/>	<input type="radio"/>
Primetime TV schedule	<input type="radio"/>	<input type="radio"/>	<input type="radio"/>	<input type="radio"/>	<input type="radio"/>
News about Illinois Public Media	<input type="radio"/>	<input type="radio"/>	<input type="radio"/>	<input type="radio"/>	<input type="radio"/>
Featured TV programs	<input type="radio"/>	<input type="radio"/>	<input type="radio"/>	<input type="radio"/>	<input type="radio"/>
Featured radio programs	<input type="radio"/>	<input type="radio"/>	<input type="radio"/>	<input type="radio"/>	<input type="radio"/>

For full version of survey, go to [will.illinois.edu/membersurvey](http://will.illinois.edu/membersurvey)

**WILL membercard**

**6. How do you regard the Membercard\* as a benefit of your membership in WILL?**

\*Only applicable to donors who give \$72 or more annually

- ☐ Very important
- ☐ Somewhat important
- ☐ Neutral about it
- ☐ Somewhat unimportant
- ☐ Very unimportant

**7. \$3.50\* of your annual Friends of WILL membership is designated for the Membercard. Do you feel it is an important allocation of the station's financial resources?**

\*Includes card, mailing materials, and postage

- ☐ Yes
- ☐ No

**WILL Passport access**

**8. Have you used/activated your WILL Passport\* account, which allows you to watch additional content on the various PBS streaming platforms?**

\*Only applicable to donors who give \$60 or more annually

- ☐ Yes
- ☐ No

**9. How do you regard WILL Passport as a benefit of your membership in WILL?**

- ☐ Very important
- ☐ Somewhat important
- ☐ Neutral about it
- ☐ Somewhat unimportant
- ☐ Very unimportant

**Demographics**

**10. Please indicate your level of annual giving to WILL**

- ☐ \$1-\$39
- ☐ \$40-\$59
- ☐ \$60-\$99
- ☐ \$100-\$249
- ☐ \$250-\$499
- ☐ \$500-\$999
- ☐ \$1000 or more

**11. How long have you been a Friend of WILL?**

- ☐ Less than one year
- ☐ 1-3 years
- ☐ 4-6 years
- ☐ 7-10 years
- ☐ 11-15 years
- ☐ 16-19 years
- ☐ 20 or more years

**11. Please indicate your age category**

- ☐ 18-24
- ☐ 25-34
- ☐ 35-44
- ☐ 45-54
- ☐ 55-64
- ☐ 65-74
- ☐ 75-84
- ☐ 85 or more

**Comments:**

---

---

---

---

# Thank you, Program Underwriters!

Private support accounts for the largest single source of funds necessary to make Illinois Public Media and the WILL stations great resources for communities across central Illinois. We appreciate the following organizations that have stepped forward to join the individuals and families who support award-winning public media services.

A-A-A Storage	Dancing Dog	Rental City
Aging in Place	Danville Gardens, Inc.	Riggs Beer Company
AgrAbility	Danville Light Opera	Risk Management Commodities, Inc
Agribile-Morning Farm Report	Danville Symphony Orchestra	Sangamon Auditorium, UIS
AgriGold	DTN/The Progressive Farmer	Sew Sassy
Allerton Park Conference Center	Einstein Bros. Bagels	Silvercreek/Courier Cafe
Amasong	Emmanuel Memorial Episcopal Church	Sinfonia da Camera
Archer Daniels Midland Company	Farm Credit Services of Illinois	Sock Club Enterprises LLC
The Art Theatre	Farmer City Antique Show	St. Joseph Apothecary
Asahel Gridley Antique Shop	First Federal Savings Bank of Champaign-Urbana	St. John the Divine Episcopal Church
Associated Antique Dealers of America	Global Commodity Analytics & Consulting LLC	Standard Grain, Inc.
Auditory Care Center	Greenview	Stewart-Peterson Group Inc.
Baroque Artists of Champaign-Urbana	Hendrick House	Strategic Farm Marketing Inc.
Bates Commodities	Illini Union Ballroom	Subaru of Champaign
Beckman Institute	Illinois AgriNews	Sweeney Brothers Fine Floorcovering
Beef House	Illinois Arts Council	Symphony Orchestra Guild of Decatur
Big Grove Tavern	Illinois Beef Association	Syngenta Crop Protection
Birch Tree Counseling & Consulting LLC	Illinois Corn Growers Association	Techline
Blue Moon Farm	Illinois Pork Producers Association	Ten Thousand Villages
Busey	Illinois Program for Research in the Humanities	The Andersons, Inc.
C-U Overhead Doors, Inc	Illinois Shakespeare Festival	The Mervis Family Foundation
Center for Advanced Study	Illinois Symphony Orchestra	The Organization for Transformative Works
Central Illinois Antique Dealers Association	Illinois Times	TIAA Center for Farmland Research
Central Illinois Regional Airport	Institute for Sustainability, Energy, Environment (ISEE)	Todd's Wines at Art Mart
Champaign Park District/Virginia Theatre	John Phipps Law Offices PC	TrophyTime
Champaign-Urbana Mass Transit District	Koester & Bradley, LLP	U of I Coordinated Science Lab
Champaign-Urbana Public Health District	Krannert Art Museum	U of I Department of Electrical and Computer Engineering
Champaign-Urbana Symphony	Krannert Center for the Performing Arts	U of I Department of Engineering
Cheese & Crackers	The Land Connection	U of I Department of Physics
Chorale	Leek & Sons Funeral Home	U of I Extension
City of Champaign Community Relations	Levy Company	U of I Mens' Glee Club
City of Urbana	Little Theatre on the Square	U of I Office of the Vice Chancellor for Research
Clark-Lindsey Village	Makerspace	U of I Press
Cline Center for Advanced Social Research	Meredith Foundation	U of I School of Social Work
College of Media Ebertfest	Meyer Capel Law Office	U of I System
Columbia Street Roastery	Mike Weaver Ballroom Dance	University High School
Comcast	Monticello Railway Museum	University YMCA
Common Ground Food Co-op	National Shows 2	Urbana's Market in the Square
Community Foundation of East Central Illinois	Natural Gourmet	USDA - Farm Service Agency
Community Shares of Illinois	Parkland College	Vermilion Voles
Concierge Magazine	Pars Rug Gallery	Weiskamp Screen Printing
CU Folk and Roots Festival	Patterson Office Supplies	Wesley United Methodist Church and Student Foundation
	Prairie Farmer Magazine	Willard Airport
	Prairie Rivers Network	Windsor of Savoy
	Preservation Emporium	World Harvest Foods
	Radio Maria	



MARCUS TARDELLI, GUITAR



OCTOBER

3	ELLNORA Reverb: Marcus Tardelli, guitar	20	Dessert and Conversation: <i>A Funny Thing Happened on the Way to the Forum</i>
4-14	Illinois Theatre: <i>An American Daughter</i>	20	Sinfonia da Camera: <i>Sounds of Youth</i>
4	Jupiter String Quartet and Jasper Quartet with Michael Cameron, bass	25	Daniel Hope and Friends: <i>Air-A Baroque Journey</i>
6	Nathan and Julie Gunn and Friends: <i>An Evening on Broadway</i>	25-28 26	Lyric Theatre: <i>La Bohème</i> Dessert and Conversation: <i>A Funny Thing Happened on the Way to the Forum</i>
18-28	Illinois Theatre: <i>A Funny Thing Happened on the Way to the Forum</i>	27-28	Dessert and Conversation: <i>La Bohème</i>
18-20	Ann Hampton Callaway and Susan Werner		



KRANNERT CENTER | 50

217.333.6280 • KRANNERTCENTER.COM

**ILLINOIS**  
College of Fine & Applied Arts

**MOVING?** Let your public broadcasting membership move with you.

Fill out the form below and send it with your address label to:  
**Friends of WILL, 300 North Goodwin Avenue, Urbana, IL 61801-2316**

Let us know six weeks in advance of moving  
so that we can make the proper change.

- ☐ Check here if you wish to remove your name from our membership list.  
☐ Please update my membership with this new address:

Name \_\_\_\_\_

Street \_\_\_\_\_

City \_\_\_\_\_ State \_\_\_\_\_ Zip \_\_\_\_\_

Phone day (    ) \_\_\_\_\_ evening (    ) \_\_\_\_\_

**Friends of WILL**  
**Campbell Hall**  
**300 North Goodwin Avenue**  
**Urbana, IL 61801-2316**

NONPROFIT  
ORGANIZATION  
U.S. POSTAGE PAID  
CHAMPAIGN, IL  
PERMIT NO. 453