

Patterns

FEBRUARY 2026

Friends of WILL Membership Magazine



Celebrate two years of Illinois Soul with local performances

SEE PAGE 7

willtv BLACK HISTORY
MONTH FEATURES

SEE PAGES 2-3

Membership Hotline: 800-898-1065
 General inquiries: 217-333-7300
 Campbell Hall
 300 N. Goodwin Ave., Urbana, IL 61801-2316

Mailing List Exchange

Donor records are proprietary and confidential. IPM does not sell, rent, or trade its donor lists.

Patterns

Friends of WILL Membership Magazine
 Editor & Designer: Doris Dahl
 Art Director: Kurt Bielema

RADIO

90.9 FM

Illinois Classical is a mix of classical and other music and NPR information programs, including local news. Also with live streaming on will.illinois.edu. *See pages 4-5.*

101.1 FM

Illinois Soul is a mix of Black-hosted NPR and local news programs, smooth jazz, neo soul, R&B, and throwback jams. 101.1 FM is available in the Champaign-Urbana area. It is also heard on 90.9 FM HD2 with live streaming on illinoisoul.org. *See pages 6-7.*

580 AM

News and information, NPR, BBC, agriculture, talk shows. Also heard on 90.9 FM HD3 with live streaming on will.illinois.edu. *See page 8.*

TELEVISION

WILL-HD


All your favorite PBS and local programs, in high definition when available. 12.1: Contact your cable or satellite provider for channel information. Also live streaming at will.illinois.edu. *See pages 9-16.*


WILL Kids 24/7

Around the clock, award-winning children's programming. 12.2: also available on Comcast and Mediacom. Stream at will.illinois.edu.

WILL Create

Cooking, travel, home improvement, arts and crafts, and gardening. 12.3: also on Comcast and Mediacom. Stream at video.will.illinois.edu/livestream/.

 will.illinois.edu

 @ILPublicMedia

 @ILPublicMedia

 @ILPublicMedia

 @ILPublicMedia

Powering your inbox!

Browse our e-newsletters and sign up to receive behind-the-scenes information in your email inbox that is targeted to your interests. Whether it's news, classical music, or general information about our stations — we have you covered.
will.illinois.edu/signup



Printed with soy ink on recycled, recyclable paper. Printed by Premier Print Group.

Patterns

February 2026, Vol. LI, No. 8



By now, many of you are aware of the impact of the removal of federal funding for Illinois Public Media. This shift was formalized with the official dissolution of the Corporation for Public Broadcasting in January. As previously shared, the loss of federal support created an approximate \$1.5 million gap in our annual budget. While we have worked hard to minimize any short-term disruption to the programming you rely on, the effects behind the scenes have been significant and continue to shape how we plan for our future.

However, our community's response has been truly inspiring. Through the first six months of this fiscal year, your generosity has helped us raise an incredible \$850,000 more than we raised by Dec. 31 last year! And we have welcomed more than 1,000 new members. Your support has been a powerful reminder of why public media *still* matters.

At the same time, uncertainties remain. We do not yet know what our fees for PBS, NPR, or individual national programs will be in the coming year. While those fees were significantly reduced this year and appear likely to remain lower than in years past, there are still a lot of unknowns as we finalize plans and priorities for our next fiscal year, which begins July 1. While we have made meaningful progress, there is still work to be done to fully close the funding gap.

Even so, your support has helped place us on steadier footing as we continue forward. Because of your generosity in the first half of our fiscal year, we are better prepared to navigate the challenges while continuing to serve central Illinois. We remain hopeful and optimistic about the months ahead. We are deeply grateful to all of you who make up this community, and we are appreciative of your role in sustaining Illinois Public Media for everyone we serve.

John Steinbacher, director of development, budget and resource planning

Join us for primary coverage

On March 17, Illinois will hold its primary election. IPM News is partnering with the League of Women Voters of Champaign County to provide crucial voter information and critical news coverage leading up to the primaries. Stay tuned to AM 580 and IPMnewsroom.org (QR Code at right) for the latest updates. We will pay particularly close attention to the following races and topics:



- **Champaign County executive race**

- **Gubernatorial race**

We have extended interview invitations to incumbent Gov. JB Pritzker (D) and former State Sen. Darren Bailey (R) and others. As of this writing, no appearances on **The 21st Show** have been confirmed.

- **U.S. Senate race**

Listen to interviews on **The 21st Show** with U.S. Senate candidates Lt. Gov. Juliana Stratton online at go.illinois.edu/stratton-26, Rep. Robin Kelly (go.illinois.edu/kelly-26), and Don Tracy (go.illinois.edu/tracy-26). Rep. Raja Krishnamoorthi has been invited but at this time has not agreed to an interview.

- **Illinois congressional races**

Listen to interviews on Illinois 13th congressional district race online at go.illinois.edu/IL13-26 or scan QR Code at right.



- **Voting resources and security**

- **Links to local candidates and issues**

Go to IPMnewsroom.org (or scan the QR Code top right) for direct access to the Vote411.org site. Vote411 local information is provided by the League of Women Voters of Champaign County.

- **Candidate forums**

In partnership with the League of Women Voters we will record and distribute candidate forums regarding Illinois' 13th district and the county executive races. Details will be announced.



Candidates for Illinois' 13th congressional district, from left: Dylan Blaha, Rep. Nikki Budzinski (incumbent), Joshua Loyd, and Jeff Wilson.

Weekend PBS News programs premiere



Two new 30-minute weekend programs were launched by PBS News in January airing nationally on PBS stations in the time slots previously held by **PBS News Weekend**. **Horizons from PBS**

News (Saturdays at 5 pm) and **Compass Points from PBS News** (Sundays at 5 pm) also stream online and are distributed as video podcasts across PBS News' digital, podcast, and social platforms.

Photos by Mike Morgan



William Brangham



Nick Schiffrin

Horizons from PBS News features experts and professionals in the world of science, health, technology, and the environment, and dives into a single issue each week, such as the Artificial Intelligence race, advances in medicine, and the latest developments in climate science. **Horizons** is hosted by Peabody and Emmy award-winning journalist and **PBS News Hour** correspondent William Brangham.

Compass Points from PBS News takes an all-encompassing look at a prominent international topic each week and provides timely analysis with a panel of experts, including former government officials and journalists, on issues such as America's power and influence abroad, the shifting world order under the Trump Administration, and what global conflicts and rising tensions could mean for America's interests. **Compass Points** is hosted by Peabody and duPont-Columbia award-winning journalist and **PBS News Hour** foreign affairs and defense correspondent Nick Schiffrin.

Black Chorus Camp and more featured



Prairie Fire will feature a segment on the University of Illinois Black Chorus Camp at 7:30 pm Thursday, Feb. 19.



Founded by Ollie Watts Davis, a professor of voice and the director of the university's Black Chorus, the camp is part of the Illinois Summer Youth Music program. The camp is designed to attract high school students from central Illinois, in particular. Students are exposed to a range of repertoire — spirituals, hymns, anthems, gospel, jazz, pop, hip-hop, soul and R&B — and develop skills for the practice and performance of the

vocal music of Black Americans. **Prairie Fire** documented the camp from start to finish and spoke to students and staffers throughout the week about their experience. You can watch **Prairie Fire** episodes on demand on YouTube, the PBS App, or on our website at will.illinois.edu/prairiefire.

The life and legacy of Barbara Jordan

As a young girl in Houston, Barbara Jordan understood that to succeed, she would need to forge her own path. With relentless determination and unyielding tenacity, Jordan made history as Texas' first Black state senator (1967–1973) and the first Southern Black woman elected to the U.S. House of Representatives (1973–1979). Her sharp intellect and moral clarity transformed U.S. politics. From Nixon's impeachment to civil rights battles, her voice demanded accountability, while she privately faced struggles few ever knew of. **The Inquisitor**, airing at 9 pm Monday, Feb. 23 on **Independent Lens**, chronicles Jordan's meteoric rise offering a blueprint for uniting a divided America through a turbulent political era.



Meet sister athletes Venus and Serena



The remarkable journey of two athletic titans is the focus of **Venus & Serena, The Game Changers**, a compelling biographical profile that showcases the remarkable journeys of Venus and Serena Williams, two of tennis' greatest athletes. The film explores the sisters' careers while highlighting their resilience against discrimination, bigotry, and sexism and their contributions to tennis, fashion, and women's rights. **Venus & Serena, The Game Changers** airs at 10 pm Monday, Feb. 16 and also can be watched with WILL Passport.

The shared experiences of Black and Jewish Americans

A new four-part docuseries explores the rich, complex relationship between Black and Jewish Americans — forged in shared struggle, tested by division, and representing a uniquely American experience. From executive producer, host, and writer Henry Louis Gates Jr., **Black and Jewish America: An Interwoven History** airs Tuesdays at 8 pm, beginning Feb. 3 with the final episode airing at 9 pm Feb. 17 (after part 3). While shared ideals of justice united Black and Jewish people, they also were divided by the realities of race in America. The full series is available with the PBS App on Feb. 3.

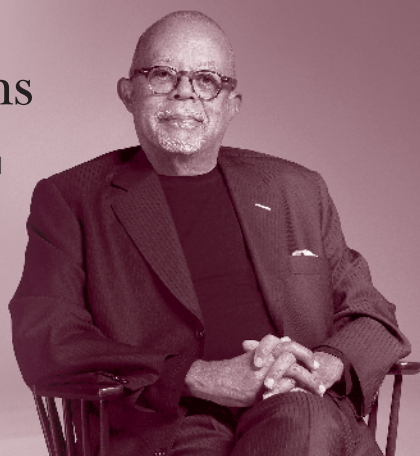




Photo by Hans Kumpf

‘American Masters’ features music icons

American Masters features documentaries on history-making African American artists Roberta Flack and Sun Ra on Friday, Feb. 20.

At 8 pm, the encore broadcast of **Roberta Flack** provides an intimate look into the soul pioneer’s artistry, life, and triumphs over racism and sexism within and outside the recording industry. The film follows Flack from a piano lounge through her rise to stardom. Detailing her story in her own words, the film features exclusive access to Flack’s archives and interviews with Rev. Jesse Jackson, Peabo Bryson, and more.

At 9:30 pm, **Sun Ra: Do the Impossible** is a kaleidoscopic portrait of the visionary jazz musician, composer, and poet known as Sun Ra and the musical, historical, and philosophical currents that shaped him. The film takes us on an illuminating journey through his life gracefully balancing recollections from his still-devout band members and dancers with insightful interviews from music scholars, and unforgettable film and performance footage of Sun Ra himself.

Meet the queen of pop and her soul sister

A new film provides a double portrait of two exceptional artists. Beyoncé is arguably the biggest pop star of our time, while Solange prioritizes her complex artistic aspirations over commercial success. The program explores the sisters’ roots in Houston: Beyoncé’s rise to fame and success as a solo artist, and Solange’s journey to establish herself as an independent artist. **Beyoncé & Solange — The Queen of Pop and her Soul Sister** features insight from friends and companions, shedding light on the lives and careers of both sisters. Airing at 9 pm Monday, Feb. 16, the program also is available with WILL Passport.



Photo by Alberto E. Rodriguez

Celebrating gospel’s origins and expression

Echoes of Praise: Gospel Music in NY’s Capital Region highlights the tradition and legacy of gospel music. Through interviews and performances, the program celebrates gospel’s spiritual and artistic expression as a source for community and inspiration. Viewers go inside some of the hallowed congregations in New York’s capital region, offering insight into a musical form that moves people from Sunday morning to Saturday night. From notable artists and religious leaders to people whose lives have been shaped by song, the film presents a moving tribute to an African American art form that has enriched and defined the region’s culture. **Echoes of Praise: Gospel Music in NY’s Capital Region** airs at 10 pm Friday, Feb. 27.





WEEKDAYS

6 am

NPR Morning Edition with Leila Fadel, Steve Inskip, A Martínez, and Michel Martin

9 am

Classic Mornings with Vic Di Geronimo
Vic makes each morning a classic morning!

Noon

Performance Today

2 pm

Classical Music

5 pm

NPR All Things Considered with Ailsa Chang, Scott Detrow, Mary Louise Kelly, and Juana Summers

6 pm

The 21st Show with Brian Mackey

7 pm Monday-Wednesday

The Evening Concert

Monday–Wednesday and Friday at 7 pm and 6 and 7 pm Sundays. Listings may change.

Monday:

The New York Philharmonic This Week

- 2/2 Jaap van Zweden, conductor
Brahms: A German Requiem
Ying Fang, soprano
Matthias Goerne, baritone
- 2/9 Magnus Lindberg, conductor
Lei Liang: Verge, for 18 Strings (2009)
Marc-André Dalbavie: Melodia for Instrumental Ensemble (2009)
- 2/16 Manfred Honeck, conductor
Vivier: Orion
Bruckner: Symphony No. 9
- 2/23 Leonard Bernstein, conductor
Bernstein: Chichester Psalms (world premiere)
Bernstein: Kaddish, Symphony No. 3
Bernstein: Suites 1 and 2 from the Dybbuk

Tuesday:

Chicago Symphony Orchestra Radio Broadcast

- 2/3 Esa-Pekka Salonen, conductor
Esa-Pekka Salonen: Sinfonia Concertante for Organ and Orchestra; Ivetta Apkalna, organ
Béla Bartók Concerto for Orchestra
- 2/10 Sir Georg Solti, conductor
Beethoven: Piano Concerto No. 2 in B-flat
Vladimir Ashkenazy, piano
Liszt: A Faust Symphony
- 2/17 Bernard Haitink, conductor
Mahler: Symphony No. 2 in C Minor
Miah Persson, soprano
Christianne Stotijn, mezzo-soprano
- 2/24 Klaus Mäkelä, conductor
Brahms: Piano Concerto No. 2 in B-flat Major
Daniil Trifonov, piano
Dvořák: Symphony No. 7 in D Minor, Op. 70

Wednesday:

WFMT Orchestra Series: Orchestras of the European Broadcasting Union

- 2/4 Orchestre National de France
Ravel: La Valse
Gershwin: Piano Concerto in F
Ravel: Piano Trio in A minor
- 2/11 Vienna Philharmonic Orchestra
Riccardo Muti, conductor
Schubert: Symphony No. 4 in C Minor, D. 417
Bruckner: Mass No. 3 in F Minor
- 2/18 NDR Elbphilharmonie Orchestra
Richard Strauss: Don Juan, Op. 20
Saint-Saëns Violin Concerto No. 3 in B minor
Prokofiev: Symphony No. 1 in D major, Op. 25

- 2/25 Danish National Symphony Orchestra
Anne-Sophie Mutter, violin
Beethoven: Violin Concerto in D
Brahms: Symphony No. 2 in D Major, Op. 73

7 pm Thursday

Prairie Performances with Mel Miller

The best of classical and jazz music in central Illinois.

8 pm Thursday

The Middle with Jeremy Hobson

This nonpartisan live call-in talk show focuses on elevating the voices of the people in the middle of the country.

7 pm Friday

Heifetz On Air

2/6 Mostly Mendelssohn

Mendelssohn: Song Without Words, Op. 109
Fanny Mendelssohn Hensel: Piano Trio in D Minor, Op. 11: Ill. Lied. Allegretto

2/13 Thanks and Prayers

Beethoven: String Quartet No. 15 in A Minor, Op. 132: Ill. Holy Song of Thanksgiving to the Deity, in the Lydian Mode

2/20 Winter Dreams

Vivaldi: "Winter" Concerto No. 4 in F Minor, Op. 8, RV 297 fr. The Four Seasons
Dvořák, arr. Julia Egan: Silent Woods

2/27 The Beethoven Experience & Sibelius Sensation

To be announced

8 pm Friday

Atomic Age Cocktail Party with Jason Croft

2/6 Vegas

Big swinging sounds from Sin City!

2/13 Valentine's Day Special 2026 (2 hours)

See top of page 5.

2/20 Far Away Places (encore)

Tunes that take you around the world!

2/27 Tijuana Brass & Beyond

Music from and inspired by the early days of Herb Alpert!

9 pm Friday

Classical Music

SATURDAYS

7 am

NPR Weekend Edition

with Scott Simon

9 am

Classics By Request

Send requests to Vincent Trauth at classreq@illinois.edu or leave a message at **217-265-5064**.

11 am

Classics of the Phonograph

John Frayne's weekly exploration of memorable recordings from the 20th century.

2/7 Sir Thomas Beecham, Champion of Mozart

2/14 Artur Schnabel's Early Recordings of the Beethoven Piano Concertos

2/21 The Late 1920s Race by His Master's Voice and Columbia to Get Italian Opera on Records

2/24 The Long Playing Record Opens the Gates for the Broadway Music on Records

Illinois
ARTS
Council

Programs on WILL Radio are partially sponsored by a grant from the Illinois Arts Council, a state agency.

Noon**Afternoon at the Opera**

All performances with the Metopera Ensemble.

- 2/7 **Werther** (Massenet). Richard Bonyngne, cond., with Alfredo Kraus (Werther), Regine Crespin (Charlotte), and Kathleen Battle (Sophie). *(Performance of Feb. 3, 1979)*
- 2/14 **Idomeneo** (Mozart). Jeffrey Tate, cond, with David Rendall (Idomeneo), Frederica von Stade (Idamante), Hildegard Behrens (Elettra), and Benita Valente (Ilya). *(Performance of Feb. 15, 1986)*
- 2/21 **Manon Lescaut** (Puccini). Nello Sant, cond., with Mirella Freni (Manon), Peter Dvorsky (Des Grieux), and Brian Schexnayder (Lescaut). *(Performance of March 17, 1990)*
- 2/28 **Les Troyens, Part I, The Fall of Troy** (Berlioz). Rafael Kubelik, cond., with Jon Vickers (Aeneas)), Shirley Verrett (Cassandra), and Louis Quilico (Chorebus). *(Performance of March 16, 1974)*

4 pm

Classical Guitar Alive! with Tony Morris

5 pm

Performance Today Weekend with Valerie Kahler
Classical music in concert from American Public Media studios and sites across the nation and around the world, as well as classical music news, interviews, and features.

7 pm

The Midnight Special with Marilyn Rea Beyer
A lively potpourri of folk, Celtic and bluegrass, show and novelty tunes, and hilarious comedy routines.

9 pm**Tiny Desk Radio**

with Bobby Carter and Anamaria Sayre
Performances, interviews and behind-the-scenes stories made exclusively for public radio stations.

NPR News Headlines at 9:01.

10 pm

Atomic Age Cocktail Party (See 8 pm Friday)
with Jason Croft

11 pm

Atomic Age Double Shot with Jason Croft
An episode from our archives.

- 2/7 **Count Em Up**
- 2/14 **Valentine's Day Special 2026** (continued)
- 2/21 **Grooving Guitars**
- 2/28 **Cool**

Midnight

Classical Music

SUNDAYS**6 am**

Classical Music

7 am

NPR Weekend Edition with Ayesha Rascoe

9 am

Sunday Baroque with Suzanne Bona
NPR News Headlines at 9:01 and 10:01

1 pm

Pipedreams with Michael Barone

Celebrate love

Tune in at 8 pm Friday, Feb. 13 (repeated at 10 pm Saturday, Feb. 14) for a two-hour

Atomic Age Cocktail Party Valentine's Day special. Host Jason Croft has curated a playlist with minimal interruptions to provide background music for Valentine's Day. Featured artists include Vic Damone, Jackie Gleason, Julie London, Nelson Riddle, and more.

**3 pm**

Performance Today Weekend

5 pm

Reel Music with Matt Rogers

Music from the movies each week with an hour of orchestral themes from cinema's best film scores.

6 pm**The Evening Concert**

The Chamber Music Society of Lincoln Center

- 2/1 Schubert: Sonata in A Minor for Cello and Piano, D. 821 "Arpeggione"
Beethoven: Trio in E-flat Major for Piano, Violin, and Cello, Op. 1, No. 1
- 2/8 Shostakovich: String Quartet No. 13 in B-flat Minor, Op. 138
Shostakovich: From Jewish Folk Poetry for Soprano, Alto, Tenor, and Piano, Op.79
- 2/15 Mozart: Quintet in C Minor for Two Violins, Two Violas, and Cello, K. 406
Felix Mendelssohn: String Quartet No. 2 in A Minor, Op. 13
- 2/22 Schubert: Death and the Maiden for Voice and Piano, D. 531
Bloch: Suite hébraïque for Viola and Piano
Prokofiev: Sonata for Two Violins, Op. 56

7 pm

Fiesta! with Elbio Barilari

- 2/1 **Manuel Castillo: Spanish Composer**
Some of Castillo's great works including the Symphony No. 3 "Poemas de Luz."
- 2/8 **Fresh Ink: Recent Orchestral Pieces from Chile and Brazil**
Music by Chilean composer Hernán Ramírez as well as Brazilian composers Roberto Prado and Felipe Monteforte.
- 2/15 **Two Mexican Giants: Carlos Chávez & Silvestre Revueltas**
Bringing together some remarkable compositions by these two giants of 20th-century music.
- 2/22 **Hidden Jewels by Camargo Guarnieri**
Guarnieri brought the music of Brazil to the concert stage through symphonies, operas, dance music and song.

8 pm

Prairie Performances (encore)

9 pm

Jazz Night In America with Christian McBride

10 pm

Classical Music

NPR News Headlines at 11:01

Overnight

Classical Music



Share your love for Illinois Soul!
 Email us at Illinois-Soul@illinois.edu
 or leave a voicemail at 217-244-1989.

Monday - Friday		Saturday	Sunday
Neo + SMJ	5:00	Neo + SMJ	Jazz Network
NPR Morning Edition with Kimberly Schofield	6:00	R&B/Throwbacks	NPR Weekend Edition
	7:00		
R&B Smooth Jazz Neo-Soul	8:00		The Cut (featuring gospel music)
	9:00		
Funk on Fridays Funk Ride (Fridays at 5 pm)	10:00	Dialogue	Illinois Soul Gospel
	11:00		
	Noon	R&B/Throwbacks	R&B Dusties
	1:00		
	2:00		
	3:00		
	4:00		
	5:00		
Code Switch/Life Kit (M), Dialogue (Tu), Reveal (W), Throughline (Th), Funk Ride continues (F)	6:00	The Wind Down with Will Downing	
The Quiet Storm	7:00	Catch the Flo	Soul of Jazz
	8:00		
	9:00	New Urban Jazz	Pillow Talk
	10:00		
	11:00	Jazz Night in America	Overnight: Neo + SMJ
	midnight to 6 am	Overnight: Jazz Network	



facebook.com/IllinoisSoul



[@illinoissoul](https://www.instagram.com/illinoissoul)



[@illinois_soul](https://twitter.com/illinois_soul)

Jill Clements, Illinois Soul Manager

TOP 5 *R&B Artists*

Tying in to our on-air series, we will feature the Top 5 R&B artists according to community members, staff members, and VIPs.



Sheila Johnson is an author, philanthropist, and trailblazing businesswoman, best known as co-founder of BET, the first cable television network dedicated to African American audiences, and the creator of the groundbreaking youth series Teen Summit. A proud University of Illinois alumna, she continues to influence culture through her leadership and philanthropy. Her top 5:

1. James Brown
2. Luther Vandross
3. Whitney Houston
4. Earth, Wind & Fire
5. Marvin Gaye

Celebrate an Illinois Soul milestone with us

9 EVENTS. 28 DAYS. 2 YEARS!

Jill Clements, co-founder and station manager of Illinois Soul

As Illinois Soul celebrates its second anniversary this month, we're excited to amplify Black voices, music, and culture in a major way. This milestone is more than a birthday — it's a reflection of our unwavering commitment to R&B, Black news stories, and the community that continues to shape Illinois Soul into a trusted cultural platform. Since Illinois Soul went on the air in February 2024, we've grown together, creating space for soulful expression, connection, and joy through music that truly moves us all.

At the heart of this celebration is our marquee event on Feb. 7 featuring the incomparable **Maysa**, who will grace the Tryon Festival Theatre at Krannert Center for the Performing Arts. With a sound that seamlessly blends smooth jazz, neo-soul, and R&B, Maysa is a rare artist whose talent defies genre. Her voice is elegant, powerful, and deeply soulful, delivering performances that resonate long after the final note. She doesn't just sing — she commands the moment, creating an experience that feels both intimate and unforgettable. Tickets are available at KrannertCenter.com.



Jill Clements



Erech Bruce

Our anniversary celebration continues in partnership with Krannert Center through the 2026 Uncorked Special Edition series. This four-part soul showcase takes place every Thursday in February at 5:30 pm on Krannert Center's Stage 5. Designed as an intimate, free, after-work experience, Uncorked brings together live music, culture, and community in a relaxed yet elevated setting where the grooves are always right.

Join us immediately following each Uncorked at the Gallery Art Bar, 119 W. Main St., Urbana, for the **Illinois Soul Certified Organic Jam Sessions**, featuring tributes to D'Angelo, Angie Stone, and more.



Zo! & Tall Black Guy featuring Debórah Bond

Hailing from Peoria, Erach delivers soulful, hard-hitting blues with powerful vocals and undeniable authenticity. A familiar face at the Peoria Blues & Heritage Music Festival, Erach kicks off the Uncorked series on Feb. 5, setting the tone with music rooted in lived experience.

On Feb. 12, we welcome acclaimed saxophonist **Chris Greene**, an artist respected across genres and generations. His résumé includes performances with Common, The Temptations, and Midnight Sun. Though he appeared on the TV series "Empire," he has always prioritized musical excellence and community impact, earning him the Mayor's Award for the Arts from the Evanston Arts Council. His Uncorked set blends jazz, soul, and funk with precision and purpose.

On Feb. 19, Champaign-Urbana's favorite R&B band **Ther'Up.Y** takes over Stage 5, bringing the funk, the classics, and of course the fun.

Our series concludes on Feb. 26, with the baddest neo-soul band in the land — **Zo! & Tall Black Guy** — joined by **Deborah Bond** for an electrifying performance from this nationally acclaimed band demonstrating all the things a live performance should be.

Thank you, Soul mates, for your generosity during our challenging year. We're giving back the love tenfold.

Monday - Friday			Saturday		Sunday		
NPR Morning Edition with Kimberly Schofield			5:00	The Middle (encore)	Thoroughline		
			6:00	Commodity Week	Inside Europe		
			6:30	State Week in Review			
			7:00	NPR Weekend Edition	NPR Weekend Edition		
			8:00				
1A			9:00	The Splendid Table	It's Been a Minute/ Wild Card		
			10:00	Wait Wait ... Don't Tell Me!			
The 21st Show with Brian Mackey			11:00	Weather Realness	Code Switch/Life Kit		
Here & Now with Jason Croft			Noon	Statewide	Wait Wait ... Don't Tell Me! (repeat)		
			The Middle (F repeat)	1:00	This American Life	The Treatment	
						State Week in Review	
The Closing Market Report 2:06 pm			2:00	Radiolab	Reveal		
BBC Newshour	Commodity Week (F)	2:30					
Fresh Air with Terry Gross & Tonya Mosley			3:00	TED Radio Hour	On the Media		
All Things Considered			4:00	All Things Considered	All Things Considered		
			5:00	Hidden Brain	The New Yorker Radio Hour		
			6:00	Left, Right & Center	Travel with Rick Steves		
The 21st Show (repeat)			7:00	Ezra Klein	This Old House Radio		
On the Media (M), Ezra Klein (Tu), Dialogue (W), The Middle (Th), Science Friday (F)			8:00	Latino USA	Weather Realness		
The Daily/Today Explained			9:00	Dialogue	Tiny Desk Radio		
On Point			10:00	Embodied	Sports in America		
BBC World Service			11:00	Moth Radio Hour	Not By the Playbook		
			Midnight	Sam Sanders Show	Le Show		
			1 am to 5 am	BBC World Service	BBC World Service		

Bold Listing = National/International News

Lillie Duncanson, Director of Broadcast Operations



AGRICULTURE • www.willag.org

Todd Gleason, host, **Closing Market Report** and **Commodity Week**:
Opening Market Report: 8:49 am; **Market Update**: 10:58 am; **Midday Market Report**: 12:58; **Closing Market Report**: 2:06. **Fridays: Commodity Week**: 2:30; **Grain Market Summary**: 4:32.
To listen to archived Ag reports, sign up for the Illinois Public Media Ag e-newsletter, or download our agricultural podcasts.



IPM NEWS • IPMnewsroom.org

Reginald Hardwick, news and public affairs director, Illinois Public Media
The news from Illinois Public Media's award-winning staff of reporters, hosts, and producers can be heard during **Morning Edition**, **The 21st Show**, **Here & Now**, and **All Things Considered**:
Jason Croft, Christine Hatfield, Emily Hays, Kulsoom Khan, Brian Mackey, Steve Morck, Stephanie Mosqueda, David Pierce, Kimberly Schofield, Tinisha Spain, Arjun Thakkar, and Jose Zepeda.
WILL Call: Wednesdays at 6:45 and 9:45 am and Thursdays at 5:44 pm on AM 580 and FM 90.9



WEATHER

Monday-Friday
Weather forecasts from meteorologist Andrew Pritchard throughout the day.

For details on 2026 primary election coverage, see page 1.

Monday - Friday		Saturday	Sunday
Newsline	5:00	Mister Rogers' Neighborhood	Mister Rogers' Neighborhood
Classical Stretch (M,W,F) Sit and Be Fit (T, Th)	5:30	Arthur	Arthur
Wild Kratts	6:00	Wild Kratts	Wild Kratts
Weather Hunters	6:30	Weather Hunters	Weather Hunters
Lyla in the Loop	7:00	Lyla in the Loop	Lyla in the Loop
Carl the Collector	7:30	Carl the Collector	Carl the Collector
Daniel Tiger's Neighborhood	8:00	Daniel Tiger's Neighborhood	Daniel Tiger's Neighborhood
Phoebe & Jay (see page 11)	8:30	Phoebe & Jay	Phoebe & Jay
Sesame Street	9:00	Sesame Street	Sesame Street
Work It Out Wombats!	9:30	Skillsville (See page 13)	Opportunity Knock\$
Donkey Hodie	10:00	MotorWeek	Consuelo Mack WealthTrack
Rosie's Rules	10:30	Garden SMART	To the Contrary with Bonnie Erbe
Elinor Wonders Why	11:00	Mid American Gardener	Rick Steves' Europe 2/22 Prairie Fire
Alma's Way	11:30	My Greek Table w D. Kochilas	Market to Market
Molly of Denali	Noon	America's Test Kitchen	Feb. 1 Noon Midsomer Murders 1:50 Midsomer Murders 3:31 The Evolving Legacy of HBCUS 4:00 Tampa's Untold Chapter in the Civil Rights Movement 5:00 Compass Points from PBS News (see page 1) 5:30 Rick Steves' Europe 6:00 Miss Fisher's Murder Mysteries Feb. 8 Noon Midsomer Murders 1:50 Midsomer Murders 3:31 Black College Football Hall of Fame: Journey to Canton Pullman and the Railroad Rebellion: American Stories 5:00 Compass Points from PBS News (see page 1) 5:30 Rick Steves' Europe 6:00 Miss Fisher's Murder Mysteries Feb. 15 Noon Midsomer Murders 1:40 Midsomer Murders 3:20 Midsomer Murders 5:00 Compass Points from PBS News (see page 1) 5:30 Rick Steves' Europe 6:00 Miss Fisher's Murder Mysteries Feb. 22 Noon Midsomer Murders 1:45 Midsomer Murders 3:25 Beyonce & Solange 4:30 Venus & Serena, Game Changers 5:30 Rick Steves' Europe 6:00 Great Performances: Movies for Grownups with AARP the Magazine (see p. 11)
Xavier Riddle and the Secret Museum	12:30	Cook's Country	
Arthur	1:00	Christopher Kimball's Milk Street Television	
Odd Squad	1:30	Relish	
M Miss Fisher's Murder Mysteries Tu Antiques Roadshow W Finding Your Roots 2/18 Black & Jewish America: parts 3 & 4 of 4 (see page 2) Th Nature F NOVA	2:00	Sara's Weeknight Meals	
	2:30	Lidia's Kitchen	
M Sister Boniface Mysteries Tu Celebrity Antiques Road Trip W Black and Jewish America: An Interwoven History (see p. 2) Th 2/5 Safe Harbors: Lighthouses of Maine 2/12, 19, 26 Animal Babies F Secrets of the Dead	3:00	Ireland with Michael	
	3:30	Samantha Brown's Places to Love	
Antiques Roadshow	4:00	This Old House	
	4:30	Ask This Old House	
DW News	5:00	Horizons from PBS News (see page 1)	
BBC World News America	5:30	Antiques Roadshow	
PBS News Hour	6:00		
	6:30	As Time Goes By	

During pledge programming, the schedule will vary, including Saturday, Feb. 28.

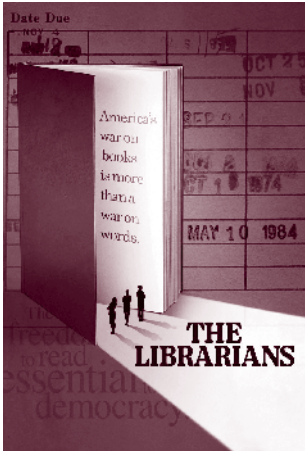
Lillie Duncanson, Director of Broadcast Operations



WILL Kids 24/7 on 12.2
For the full WILL Kids 24/7 schedule,
go to www.illinois.edu/tv/schedule



Create 24/7 on 12.3
View the Create schedule,
at www.illinois.edu/tv/schedule



Librarians fight to protect First Amendment rights

In Texas, the Krause List targets 850 books focused on race and LGBTQia+ stories, triggering sweeping book bans across the U.S. at an unprecedented rate. As tensions escalate, librarians find themselves united on the front lines of a national battle. Controlling the flow of ideas means control over communities. Despite facing harassment, threats, and laws aimed at criminalizing their work — the librarians' rallying cry for freedom to read is a chilling cautionary tale. **Independent Lens** explores the broader implications for education and public life in **The Librarians** airing at 9 pm Monday, Feb. 9. The film is available with the PBS App on the same day.

The high stakes game of animal parenting



Narrated by Sir David Attenborough, a new five-part natural history series from **Nature** explores the extraordinary strategies and ingenious tricks that animal parents employ to ensure the survival of their offspring. Just like us, animal parents can be caring, patient, dedicated, short-tempered, and foolish. Elephant mothers will dedicate themselves to showing their calves where to find water, Cardinalfish fathers endure housing their fry inside their own mouths, while a lion pride adopts the cubs of a recently killed matriarch and



raise them to become giant hunters. Filmed over three years on six continents, and in 26 countries, the series captures never-before-seen behaviors, revealing the joy and drama of animal parenthood in a rapidly changing world. **Parenthood** airs on **Nature** Wednesdays at 7 pm beginning Feb. 4.

‘NOVA’ asks ‘Can Dogs Talk?’

A growing number of dog owners claim their dogs talk to them thanks to innovative word buttons that seem to unlock a new realm of canine communication. But are these dogs truly understanding what we're saying — and talking back? To find out, scientists are conducting the largest animal communication study in history, analyzing millions of button presses from thousands of dogs worldwide. Prepare to question everything you thought you knew about the minds of dogs and discover just how far their linguistic abilities might stretch. Season 53 of **NOVA** continues Wednesdays at 8 pm with **Can Dogs Talk?** on Feb. 4. Other new episodes this month include **Mammal Origins** (Feb. 11), **Rain Bombs** (Feb. 18), and **Stone Age Temple Mystery** (Feb. 25).





Series aims to boost literacy skills in pre-K

A new animated series for preschoolers from PBS KIDS premieres Feb. 2. **Phoebe & Jay**, a fun, literacy-focused animated series for children ages 3-5 will air daily at 8:30 am on WILL-TV. The show, which follows the adventures of the curiously charismatic 6-year-old fraternal twins, Phoebe and Jay Yarber, highlights a variety of texts that preschoolers encounter in their daily lives to foster their early literacy skills and help them navigate the world around them. The twins uncover adventures in their new home — a flyer to help a neighbor find a lost pet, clothing labels to find the right size shirt — showing young viewers how they, too, can utilize these skills to explore their surroundings, pursue their interests, and accomplish tasks big and small in their own lives.

In addition, **Phoebe and Jay's Dance Party** game will debut on pbskids.org and the PBS KIDS Games app in tandem with the series launch.

'Movies for Grownups' awards return



This was a fantastic year for entertainment by and for people age 50 and up (aka "grown-ups"). Nearly half of the most recent acting Emmys went to older actors, and nine of the 20 nominees for acting at the 2025 Oscars were over 50 too. Discover the year's best films, shows, and talents during the annual **Movies for Grownups Awards with AARP the Magazine**. Iconic and beloved screen and stage performer Alan Cumming returns as host during this year's awards show in which Adam Sandler receives the Career Achievement Award.

Movies for Grownups Awards with AARP the Magazine airs on **Great Performances** at 6 pm Sunday, Feb. 22.

Does Camelot have roots in British history?

Can the stories about King Arthur be proven true? Was the legendary court of Camelot a real place? Join professor Mark Horton on his journey across Britain to prove real events and places that inspired the chivalric myths. Horton scours medieval texts and archaeological sites for a new understanding of the Arthurian legends and what Britain was like after the Romans left in the fifth century. **The Quest for Camelot** airs on **Secrets of the Dead** at 9 pm Wednesday, Feb. 4.



1 Sunday

- 7:00 Miss Scarlet on MASTERPIECE** (TV-PG) (DVS)
Bad Blood. Season 6, episode 4 of 6. Charlie Phelps, the new Detective Inspector at the City of London Police, hires Eliza for a case involving his uncle. However, Scotland Yard also is after the man, leaving Eliza caught in the middle. *Repeated 2 am 2/3.*
- 8:00 All Creatures Great and Small on MASTERPIECE** (TV-PG) (DVS)
Jenny Wren. Season 6, episode 4 of 7. Helen struggles when Jenny gets some exciting news. Tristan doubts himself when he tries to fit into Charlotte's world. *Repeated 12 am 2/2 & 3 am 2/3.*
- 9:00 Bookish** (TV-14)
Deadly Nitrate, Part 2 of 2. Episode 4 of 6. Book and his team race to unmask the film-set killer before someone else is left on the cutting room floor — permanently. *Repeated 1 am 2/2 & 4 am 2/3.*
- 10:00 Velvet** (TV-14)
White Christmas. Season 2, episode 8 of 13. When snow arrives in time for Christmas, Ana organizes a celebration. Rita is left heartbroken after Pedro's announcement.
- 11:30 Energy Switch** (TV-G)
Air Conditioning. Explore new ideas that could bring the benefits of cooling to more people.

2 Monday

- 7:00 Antiques Roadshow** (TV-G)
Georgia State Railroad Museum, Hour 2.
- 8:00 Antiques Roadshow** (TV-G)
Old Sturbridge Village, Hour 2.
- 9:00 Pullman and the Railroad Rebellion: American Stories** (TV-PG) (DVS)
Railroad titan George Pullman's sleeping cars changed how some Americans rode the rails. Produced by WTTW, this film tells the story of the Black civil rights movement in Chicago. *Repeated 4 pm 2/8, 3 am 2/14 & 4 am 2/15.*
- 10:00 Harriet Tubman: Visions of Freedom** (TV-14)
Harriet Tubman was an Underground Railroad conductor, a Civil War scout, and a spy, who repeatedly risked her own life and freedom to liberate others from slavery. *Repeated 1 am 2/3, 2 am 2/4, 10 pm 2/24 & 3 am 2/26.*
- 11:00 Amanpour and Company**

3 Tuesday

- 7:00 Finding Your Roots** (TV-PG)
Love & Basketball. Henry Louis Gates Jr. explores the roots of basketball superstars Brittney Griner and Chris Paul, revealing stories of courage, talent and grit. *Repeated 1:30 pm 2/4, 4 am 2/5 & 4 am 2/9.*
- 8:00 Black and Jewish America: An Interwoven History** (TV-14)
Let My People Go. See page 2. Part 1 of 4. *Repeated 2:30 pm 2/4, 3 am 2/5 & 3 am 2/9.*
- 9:00 Frontline**
Contaminated: The Carpet Industry's Toxic Legacy. How carpet mills contaminated Southern communities with forever chemicals, known as PFAS. *Repeated 1 am 2/4.*
- 10:00 Lithium Rising: The Race for Critical Minerals**
- 11:00 Amanpour and Company**

4 Wednesday

- 7:00 Nature** (TV-PG) (DVS)
Parenthood: Grasslands. See page 10. Part 1 of 5. *Repeated 2 pm 2/5.*
- 8:00 NOVA** (TV-PG) (DVS)
Can Dogs Talk? See page 10. *Repeated 2 pm 2/6.*
- 9:00 Secrets of the Dead** (TV-PG)
The Quest for Camelot. See page 11. *Repeated 1 am 2/5, 3 pm 2/6 & 1:01 am 2/8.*
- 10:00 Secrets of the Dead** (TV-PG)
King Arthur's Lost Kingdom. Uncover new archaeological evidence at Tintagel that suggests the legend of King Arthur started in a prosperous and sophisticated trading village in fifth-century Britain following the departure of the Romans. *Repeated 2 am 2/5.*
- 11:00 Amanpour and Company**

5 Thursday

- 7:00 Mid American Gardener**
- 7:30 Ask This Old House** (TV-G)
3-Way Switch, Split Rail Fence.
- 8:00 Secrets of the Royal Palaces** (TV-PG)
Hampton Court: Upstairs, Downstairs. Part 5 of 8. Henry VIII turned Hampton Court into a palace masterpiece, complete with the Great Hall. *Repeated 1 am 2/6.*
- 9:00 Miss Fisher's Murder Mysteries** (TV-14)
Deadweight. Season 2, episode 4 of 13. When Phryne investigates a coach's missing "lucky cap," she discovers a gruesome murder instead. *Repeated 2 am 2/6, 6 pm 2/8 & 2 pm 2/9.*
- 10:00 Grantchester on MASTERPIECE** (TV-14) (DVS)
Season 2, episode 4 of 6. An apparent suicide leads Sidney to perform an exorcism. Gary goes on trial. *Repeated 3 am 2/6.*
- 11:00 Amanpour and Company**

6 Friday

- 7:00 Washington Week with The Atlantic**
- 7:30 Firing Line with Margaret Hoover**
- 8:00 The American Revolution** (TV-14) (DVS)
The Soul of All America. Part 5 of 6. After Valley Forge and Monmouth, the French-American alliance changes the war and moves it to other theaters. Navies battle off England and in the Caribbean, while armies advance in Indian Country and the South. The British take Charleston. *Repeated 1 am 2/7.*
- 10:30 History with David Rubenstein** (TV-PG)
Stuart Eizenstat.
- 11:00 Amanpour and Company**

Program helps kids learn to solve problems



A new animated children's series will help children ages 4 to 8 develop critical executive functioning skills that lay the groundwork for future success in school and the workplace. Produced by Twin Cities PBS, the show follows the adventures of Cora, Dev, and Rae as they learn and solve problems in the virtual world of **Skillville**. They transform into avatars and take on jobs to help the city thrive. Airing Saturdays at 9:30 am beginning Feb. 7, **Skillville** features the trio also applying these skills outside the game, demonstrating how to use these strategies to overcome challenges with creativity, flexibility, and confidence.

7 Saturday

- 7:00 Sister Boniface Mysteries** (TV-PG)
Toast to the Newly Dead. Season 3, episode 8 of 8. A village resident makes an unexpected and unwelcome cameo at a wedding rehearsal. *Repeated 3 pm 2/9.*
- 8:00 Midsomer Murders** (TV-PG)
Sins of Commission, Parts 1 & 2 of 2. Season 7, episodes 7 & 8 of 14. A prize-winning author is murdered on the eve of the Midsomer Literary Festival.
- 9:35 Sherlock on MASTERPIECE** (TV-14) (DVS)
The Six Thatchers. Season 4, episode 1 of 3. Sherlock (Benedict Cumberbatch) takes on the case of finding out who is going around and smashing six unique head statues of late Prime Minister Margaret Thatcher.
- 11:07 Austin City Limits** (TV-PG)
Leon Thomas.

8 Sunday

- 7:00 Miss Scarlet on MASTERPIECE** (TV-PG) (DVS)
The Night Shift. Season 6, episode 5 of 6. Dylan Cooper has been nabbed and is being held in the cells at Scotland Yard. His gang wants to spring him out. *Repeated 2 am 2/10.*
- 8:00 All Creatures Great and Small on MASTERPIECE** (TV-PG) (DVS)
Fixes. Season 6, episode 5 of 6. James gets more than he expected when he becomes the attending veterinarian at the Hensfield dog track. Meanwhile, Jimmy inadvertently shares some hard truths with Siegfried. *Repeated 12 am 2/9 & 3 am 2/10.*
- 9:00 Bookish** (TV-14)
Such Devoted Sisters, Part 1 of 2. Episode 5 of 6. A grand hotel, exiled royalty, a poisoned army captain and Trottie as a suspect. Could this prove to be Book's toughest case yet? *Repeated 1 am 2/9 & 4 am 2/10.*
- 10:00 Velvet** (TV-14)
Twelfth Night. Season 2, episode 9 of 13. Secrets are revealed as Carlos and Ana's relationship grows stronger.
- 11:30 Energy Switch** (TV-G)
Russian Energy. Russia's energy exports fund its government and war efforts.

9 Monday

- 7:00 Antiques Roadshow** (TV-G)
Georgia State Railroad Museum, Hour 3.
- 8:00 Antiques Roadshow** (TV-G)
Old Sturbridge Village, Hour 3.
- 9:00 Independent Lens** (TV-14) (DVS)
The Librarians. See page 10. *Repeated 2 am 2/11.*
- 10:30 The Committee** (TV-PG)
Taxation with Representation. This documentary is about the little-known Florida Legislative Investigative Committee of the State Legislature from 1956-1965, whose goal was to root out communist and homosexual teachers and students from state universities.
- 11:00 Amanpour and Company**

10 Tuesday

- 7:00 Finding Your Roots** (TV-PG)
Westward Bound. Henry Louis Gates Jr. traces the family trees of talk show host Sara Haines and playwright Tracy Letts, revealing the complexity at our nation's core. *Repeated 4 am 2/12, 4 am 2/16 & 2 pm 2/11.*
- 8:00 Black and Jewish America: An Interwoven History** (TV-14)
Strange Fruit. See page 2. Part 2 of 4. *Repeated 3 pm 2/11, 3 am 2/12 & 3 am 2/16.*
- 9:00 Frontline** (TV-14) (DVS)
Crisis in Venezuela. *Repeated 1 am 2/11.*
- 10:00 Freedom House Ambulance: The First Responders**
1967, inner city Pittsburgh produced America's first EMT service.
- 10:30 Swing Lo'** (TV-PG)
This film explores the life and art of visual artist Michael Richards, a New Yorker of Jamaican descent who died in the 9/11 terrorist attacks.
- 11:00 Amanpour and Company**

11 Wednesday

- 7:00 Nature** (TV-PG) (DVS)
Parenthood: Freshwater. See page 10. Part 2 of 5. Repeated 2 pm 2/12 & 1 am 2/15.
- 8:00 NOVA** (TV-PG) (DVS)
Mammal Origins. Uncover the surprising ancient origins of mammals, a story that began long before the dinosaurs' reign. Surveying Earth's tumultuous past reveals how some of our earliest ancestors survived multiple global catastrophes. Repeated 2 pm 2/13 & 2 am 2/15.
- 9:00 Secrets of the Dead** (TV-PG)
The Herculaneum Scrolls. Uncover the groundbreaking science being used by computer scientist Brent Seales as he attempts to be the first person in nearly 2,000 years to read inside hundreds of carbonized ancient scrolls found at the archaeological site of Herculaneum in Italy. Repeated 1 am 2/12, 3 pm 2/13 & 3 am 2/15.
- 10:00 Julius Caesar: The Making of a Dictator** (TV-14) (DVS)
High Priest. Part 1 of 3. Caesar enters into dangerous alliances and bends the rules of the Republic in his bid to become Consul: the highest political position in Rome. But one man is hellbent on bringing him down.
- 11:00 Amanpour and Company**

12 Thursday

- 7:00 Mid American Gardener**
- 7:30 Ask This Old House** (TV-G)
Toys and Color, Air Switch.
- 8:00 Secrets of the Royal Palaces** (TV-PG)
St. James's Palace. Part 6 of 8. Exploring St. James', the palace at the heart of the monarchy built by Henry VIII. Repeated 1 am 2/13.
- 9:00 Miss Fisher's Murder Mysteries** (TV-14)
Murder a la Mode. Season 2, episode 5 of 13. When Phryne arrives for a fitting at a fashion salon, she finds herself at a crime scene. Repeated 2 am 2/13, 6 pm 2/15 & 2 pm 2/16.
- 10:00 Grantchester on MASTERPIECE** (TV-14) (DVS)
Season 2, episode 5 of 6. The case of a suspicious death takes a surprising turn. Will Gary go to the gallows? Will Geordie go to prison? Are Sidney and Geordie's crime fighting days over. Repeated 3 am 2/13.
- 11:00 Amanpour and Company**

13 Friday

- 7:00 Washington Week with The Atlantic**
- 7:30 Firing Line with Margaret Hoover**
- 8:00 The American Revolution** (TV-14) (DVS)
The Most Sacred Thing. Part 6 of 6. British General Cornwallis struggles to pacify the southern states. Supported by the French, Washington wins the decisive victory at Yorktown. With independence secured, Americans aspire for a more perfect union. Repeated 12:57 am 2/14.
- 11:00 Amanpour and Company**

14 Saturday

- 7:00 Sister Boniface Mysteries** (TV-PG)
Don't Try This at Home. Season 2, episode 1 of 10. Great Slaughter plays host to the summer roadshow of kids' TV show 'Jolly Roger', much to the annoyance of editor Dinah Morgan. Repeated 3 pm 2/16.
- 8:00 Midsomer Murders**
The Maid In Splendour, Parts 1 & 2 of 2. Season 7, episodes 9 & 10 of 14. A barman from the 'Maid in Splendour' pub is shot dead as he walks near a ruined cottage in the woods.
- 9:30 Sherlock on MASTERPIECE** (TV-14) (DVS)
The Lying Detective. Season 4, episode 2 of 3. Sherlock faces perhaps the most chilling enemy of his long career: the powerful and seemingly unassailable Culverton Smith, a man with a very dark secret.
- 11:02 Austin City Limits** (TV-PG)
Wynonna.

15 Sunday

- 7:00 Miss Scarlet on MASTERPIECE** (TV-PG) (DVS)
The Line of Duty. Season 6, episode 6 of 6. When the mysterious death of a foreign ambassador sparks political intrigue, Eliza is called to investigate at the request of the governess. Repeated 2 am 2/17.
- 8:00 All Creatures Great and Small on MASTERPIECE** (TV-PG) (DVS)
Our Hearts Are Full. Season 6, episode 6 of 7. As VJ Day is announced, Mrs. Hall assists in planning the celebrations. Tristan leans on his brother when his past experiences come home to roost. Repeated 12 am 2/16 & 3 am 2/17.
- 9:00 Bookish** (TV-14)
Such Devoted Sisters, Part 2 of 2. Episode 6 of 6. As tension builds, the staff rebel and the Walsingham Hotel lists like an old ship. Can Book unmask Captain Orr's murderer? Repeated 1 am 2/16 & 4 am 2/17.
- 10:00 Velvet** (TV-14)
The Moment of Truth. Season 2, episode 10 of 13. Cristina is devastated after learning of Alberto's infidelity, while Patricia and Enrique rekindle their romance.
- 11:30 Energy Switch** (TV-G)
Air Quality In America. The Clean Air Act has reduced particulate matter pollution, ground-level ozone, carbon monoxide and more.

16 Monday

- 7:00 Antiques Roadshow** (TV-G)
Coastal Maine Botanical Gardens, Hour 1.
- 8:00 Antiques Roadshow** (TV-G)
LSU Rural Life Museum, Hour 1.
- 9:00 Beyonce & Solange — The Queen of Pop and Her Soul Sister** (TV-PG)
See page 3. Repeated 3:25 pm 2/22.
- 10:00 Venus & Serena, The Game Changers** (TV-14)
See page 2. Repeated 4:30 pm 2/22.
- 11:00 Amanpour and Company**

17 Tuesday

- 7:00 Finding Your Roots (TV-PG)**
Family Harmonies. Henry Louis Gates Jr. explores the family trees of two celebrated musicians: Lizzo and Flea. *Repeated 4 am 2/19, & 4 am 2/23.*
- 8:00 Black and Jewish America: An Interwoven History (TV-14)**
The Grand Alliance. See page 2. Part 3 of 4. *Repeated 2 pm 2/18, 3 am 2/19 & 3 am 2/23.*
- 9:00 Black and Jewish America: An Interwoven History (TV-14)**
Crossroads. See page 2. Part 4 of 4. *Repeated 1 am 2/18 & 3:30 pm 2/18.*
- 10:00 I'm Goin' Home**
 The story about an enslaved man's journey to freedom on the Underground Railroad.
- 11:00 Amanpour and Company**

18 Wednesday

- 7:00 Nature (TV-PG) (DVS)**
Parenthood: Oceans. See page 10. Part 3 of 5. *Repeated 2 pm 2/19.*
- 8:00 NOVA (TV-PG) (DVS)**
Rain Bombs. An invisible, unpredictable atmospheric force is wreaking havoc across the globe, sinking super yachts, flattening forests, and bringing down airliners. Follow scientists as they race to understand these catastrophic weather events. *Repeated 2 pm 2/20.*
- 9:00 Secrets of the Dead (TV-PG)**
Mozart's Sister. For the first 16 years of her life, Wolfgang Mozart's sister, Maria Anna, shared equal billing with her brother. A stunning new investigation explores why she was retired at age 16 and what happened to her music. *Repeated 1 am 2/19, 3 pm 2/20 & 1:30 am 2/22.*
- 10:00 Julius Caesar: The Making of a Dictator (TV-14) (DVS)**
Veni Vidi Vici. Part 2 of 3. Events beyond Caesar's control threaten to unravel his plans and leave him isolated. Pushed into a corner, he makes a decision that will change the course of the Republic and Western history forever.
- 11:00 Amanpour and Company**

19 Thursday

- 7:00 Mid American Gardener**
- 7:30 Prairie Fire**
 See page 2.
- 8:00 Secrets of the Royal Palaces (TV-PG)**
Osborne House. Part 7 of 8. Queen Victoria and Prince Albert bought Osborne House in 1840 as their perfect hideaway. *Repeated 1 am 2/20.*
- 9:00 Miss Fisher's Murder Mysteries (TV-14)**
Marked for Murder. Season 2, episode 6 of 13. Phryne's investigation leads her into the world of fight rigging and tribal payback. *Repeated 2 am 2/20 & 2 pm 2/23.*
- 10:00 Grantchester on MASTERPIECE (TV-14) (DVS)**
 Season 2, episode 6 of 6. Sidney seeks oblivion. His friend Sam seeks forgiveness. A dead girl's parents seek revenge. *Repeated 3 am 2/20.*
- 11:00 Amanpour and Company**

20 Friday

- 7:00 Washington Week with The Atlantic**
- 7:30 Firing Line with Margaret Hoover**
- 8:00 American Masters (TV-14) (DVS)**
Roberta Flack. See page 3.
- 9:30 American Masters (TV-14) (DVS)**
Sun Ra: Do The Impossible. See page 3. *Repeated 12:30 am 2/21.*
- 11:00 Amanpour and Company**

21 Saturday

- 7:00 Sister Boniface Mysteries (TV-PG)**
The Shadow of Baron Battenburg. Season 2, episode 2 of 10. A sighting of the mysterious missing Baron Brattenburg sends the press and police into a frenzy. *Repeated 3 pm 2/23.*
- 8:00 Midsomer Murders**
The Straw Woman, Parts 1 & 2 of 2. Season 7, episodes 11 & 12 of 14. The revival of a traditional festival at Midsomer Parva ends in tragedy when the curate is burned alive inside a straw effigy of a woman.
- 9:30 Sherlock on MASTERPIECE (TV-14) (DVS)**
The Final Problem. Season 4, episode 3 of 3. Long buried secrets finally catch up with the Baker Street duo. Is the game finally over?
- 11:30 Austin City Limits (TV-PG)**
 Jon Batiste.

22 Sunday

- 6:00 Great Performances (TV-14)**
Movies for Grownups with AARP the Magazine. See page 11. *Repeated 3 am 2/24.*
- 8:00 All Creatures Great and Small on MASTERPIECE (TV-PG) (DVS)**
Comfort and Joy. Season 6, episode 7 of 7. *Repeated 12 am 2/23 & 1:30 am 2/23.*
- 9:30 Rick Steves' Europe (TV-G)**
The Heart of England. The heartland of England has sights that put the 'Great' in Britain, including its venerable universities, its royal heritage, and reminders of its industrial might. All along the way, Rick drives on the left and polishes his pub etiquette. *Repeated 4:30 am 2/27.*
- 10:00 Velvet (TV-14)**
Today Is Valentine's Day. Season 2, episode 11 of 13. Valentine's Day brings ups and downs for everyone. Ana has doubts. Pedro and Rita are on cloud nine. Blanca and Estaban are making up for the time they lost. And Alberto does what he can to keep his mother with him.
- 11:30 Energy Switch (TV-G)**
Fertilizers. Benefits, challenges and potential solutions to using fertilizer.

23 Monday

- 7:00 Antiques Roadshow** (TV-G)
Coastal Maine Botanical Gardens, Hour 2.
- 8:00 Antiques Roadshow** (TV-G)
LSU Rural Life Museum, Hour 2.
- 9:00 Independent Lens** (TV-PG) (DVS)
The Inquisitor. See page 2. *Repeated 1:30 am 2/24 & 2 am 2/25.*
- 10:30 Fannie Lou Hamer: Stand Up** (TV-PG)
This film examines the life of civil rights legend Fannie Lou Hamer, offering first-hand accounts by those who knew her and worked side by side with her in the struggle for voting rights.
- 11:00 Amanpour and Company**

24 Tuesday

- 7:00 Finding Your Roots** (TV-PG)
Artistic Roots. *Repeated 2 pm 2/25 & 4 am 2/26.*
- 8:00 2026 State of the Union Address — A PBS News Special** (LIVE)
- 10:00 Harriet Tubman: Visions of Freedom**
See 10 pm 2/2.
- 11:00 Amanpour and Company**

25 Wednesday

- 7:00 Nature** (TV-PG) (DVS)
Parenthood: Jungles. See page 10. Part 4 of 5. *Repeated 2 pm 2/26.*
- 8:00 NOVA** (TV-PG) (DVS)
Stone Age Temple Mystery. On a remote hillside in modern-day Turkey sits Göbekli Tepe, the oldest temple on Earth. Follow experts as they use new digs and shattered skulls to piece together a captivating story that could forever change our understanding of the roots of civilization. *Repeated 2 pm 2/27.*
- 9:00 Secrets of the Dead** (TV-G) (DVS)
Hannibal in the Alps. Follow a team of experts as they solve the enduring mystery of exactly where Hannibal and his troops crossed the Alps to launch a surprise attack on Rome. *Repeated 1 am 2/26 & 3 pm 2/27.*
- 10:00 Julius Caesar: The Making of a Dictator** (TV-14) (DVS)
Ides of March. Part 3 of 3. A handful of senators plot to end his rule in the only way they can: by taking his life. But will it be enough to save the Republic?
- 11:00 Amanpour and Company**

26 Thursday

- 7:00 Mid American Gardener**
- 7:30 Ask This Old House** (TV-G)
Split Water Heater, Attic Ladder.
- 8:00 Secrets of the Royal Palaces** (TV-PG)
Kensington Palace. Part 8 of 8. How Nottingham House was renovated by William III and turned into Kensington Palace. *Repeated 1 am 2/27.*
- 9:00 Miss Fisher's Murder Mysteries** (TV-14)
Blood at the Wheel. Season 2, episode 7 of 13. In the fast-moving world of an all-women's motorcar garage, a team member is found dead.
- 10:00 Grantchester on MASTERPIECE** (TV-14) (DVS)
Season 3, episode 1 of 7. See why an impossible situation distracts Sidney from his Christmas duties. Then, when a would-be groom is found dead with the wedding rings lodged in his mouth, Georgie is horrified. *Repeated 3 am 2/27.*
- 11:30 Amanpour and Company**

27 Friday

- 7:00 Washington Week with The Atlantic**
- 7:30 Firing Line with Margaret Hoover**
- 8:00 To be announced**
- 10:00 Echoes of Praise: Gospel Music In NY's Capital Region** (TV-G)
See page 3.
- 10:30 History with David Rubenstein** (TV-PG)
Harold Holzer.
- 11:00 Amanpour and Company**

28 Saturday

Programs to be announced.
See March Patterns for details.

A new puzzling murder mystery plus a new season of 'Call the Midwife'

Phyllis Logan stars in the new six-part British crime drama **The Puzzle Lady**. Based on the best-selling novels of Parnell Hall, the cozy mystery series follows Cora Felton, an eccentric puzzle expert who lives in the fictional town of Bakerbury. When a crossword clue is found on a murder victim, DCI Hooper enlists her help. Felton proves to be quite adept at cracking the case using her quirky puzzle-solving skills, despite having personal puzzles to solve. **The Puzzle Lady** will be available to binge with WILL Passport starting Feb. 19.



All the **Call the Midwife** favorite cast members are set to return for season 15 when the series makes its broadcast premiere in March. You can watch season 15 early with WILL Passport, with new episodes released weekly starting Feb. 20. You also can binge season 14 now. In the new season, the women of Nonnatus House tackle a range of issues, including the Women's Liberation Movement, premature birth, placenta previa, kidney cancer, tuberculosis, and slavery.

« COMING AND GOING THIS MONTH TO »

WILL Passport



FEBRUARY HIGHLIGHTS

Bring Them Home, 2/23

American Masters

- Elie Wiesel: Soul on Fire, 2/25

Climate California

- Reclamation, 2/11
- Second Language, 2/25
- The Songs of Strangers, 2/18

History with David Rubenstein

Independent Lens

- Life After, 2/1

Islam's Greatest Stories of Love

World's Greatest Transportation

Marvels, season 10, 2/2

Walter Presents (with English subtitles)

- The Intern (French), season 5, 2/27
- La Favorita 1922 (Spanish), 2/13
- Rocco Schiavone: Ice Cold Murders (Italian), season 5, 2/20
- Velvet Collection (Spanish), 2/6

LEAVING SOON

America ReFramed

- The Death of My Two Fathers, 2/23
- Fannie Lou Hamer's America, 2/22

American Masters

- Marian Anderson: The Whole World in Her Hands, 2/8

Best of The Joy of Painting with Bob Ross

2/4 (various episodes)

Great Performances

- The Magic of Spirituals, 2/24

History with David Rubenstein

- Candice Millard, 2/21
- Fredrick Logevall, 2/28
- Mari Arana, 2/14

The Iranian Americans

Nature

- Animals with Cameras, ep. 1–3, 2/2
- The Ocean's Greatest Feast, 2/16
- Penguins: Meet the Family, 2/9

NOVA

- London Super Tunnel

Rick Steves' Europe

Go to will.illinois.edu/passport, your TV's app menu, or your preferred streaming device, to unlock more shows with WILL Passport via the PBS App.



Fans gather for advance screening of new season of 'All Creatures Great and Small'

Last month, 150 WILL-TV viewers braved the rainy weather and joined Illinois Public Media staff members for an advanced screening of the first episode of season 6 of **All Creatures Great and Small**, a fan-favorite presented by **MASTERPIECE**. The Abraham Lincoln Presidential Library and Museum in Springfield hosted this event for the third year, allowing attendees to see the episode larger than life on the big screen in the museum's Union Theater.

The event also featured a screening of IPM's Emmy-winning **Prairie Fire** with an episode featuring Bloomington-area artist Herb Eaton.

All episodes of season 6 of **All Creatures Great and Small** are now available to stream through the PBS App and on [pbs.org](https://www.pbs.org).



Christina Shutt, the executive director of the Abraham Lincoln Presidential Library and Museum, speaks to the audience in the theater prior to the screening.



Above and at left: 'All Creatures Great and Small' fans enter a drawing at the Illinois Public Media table to win WILL and 'MASTERPIECE' swag.



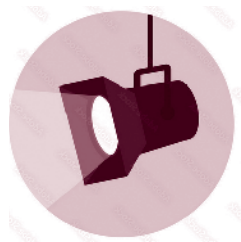
Donate your old vehicle to preserve the programs you love!





To learn more about donating your vehicle to Illinois Public Media, call 855-845-1960 or go to will.illinois.edu/cardonation.

community advisor SPOTLIGHT



In this periodic feature, we introduce members of Illinois Public Media's Community Advisors committee. Members assist us in many ways, including gathering information about community issues and needs, increasing community awareness of the WILL stations and its services, and encouraging new sources of funding for specific projects.

BELINDA DE LA ROSA, CHAIR

Belinda De La Rosa is a longtime supporter of public media, including as a Friend of WILL since moving to Champaign in 2006 to take a position in Student Affairs at the University of Illinois Urbana-Champaign. She has served as a Community Advisor off and on for more than 15 years and was named CA chair in September 2025. Since retiring in 2021, Belinda has devoted her time to community-based organizations, including serving as treasurer of Rape Advocacy, Counseling, and Educational Services and as a member of the Board of Governors of the University YMCA.



Why is public media important to you and for central Illinois?

Over 30 years ago, as a new mother, I was concerned with educational programming for my children. It was then that I discovered PBS. Not only did it enrich my children's lives, but also my own. I started to watch PBS news and other programs. We need truthful accounts of what is going on in our nation and the world.

Why have you agreed to serve as CA chair at this time? And what do you hope to contribute?

As a longtime member, I continue to utilize WILL as a valuable community resource and I know that my opinion will be taken seriously. I bring my life and work experiences as a higher education professional, mother, widow, and Latina with the hopes of benefiting the entire local community. I strive to provide constructive ideas to help the IPM leadership staff weather any challenges that may arise.

Public media nationwide is at a critical juncture due to the elimination of the Corporation for Public Broadcasting and public funding. What do you think is key for the survival of stations such as IPM?

All public media stations are struggling with the loss of the Corporation for Public Broadcasting. Now more than ever donations of any size are critical to continue the outstanding programming we are all accustomed to enjoying.

Moss Bresnahan recently moved to a public media advisory role in the College of Media at Illinois with Lillie Duncanson and John Steinbacher stepping in to serve as co-executive officers. Can you tell us about IPM leadership (past and present)?

Moss was a great leader at IPM. He oversaw the development of new programming, improvement of infrastructure, and garnered recognition for WILL through multiple national and regional awards throughout his tenure. He also cultivated a great staff that I'm sure will continue his legacy of innovative programming that serves our community. Moss will be a great asset to the College of Media.

I have worked with Lillie and John for many years. I expect they will take on the new duties of co-executive officers without any glitches. They make a great well-rounded team with decades of experience at IPM.

What do you see as the strengths of IPM and its stations?

IPM listens to and is responsive to its regional community. IPM also provide wonderful hands-on learning opportunities — including with Illinois Soul and the Illinois Student Newsroom — for students both at University Laboratory High School and the University of Illinois Urbana-Champaign.

What do you foresee for Illinois Public Media in the future?

With strong community support, I expect IPM to weather the elimination of the CPB and the federal funding cuts, continue to be responsive to our local community, and provide excellent programming. Strong local support is vital for the growth of IPM.



Students contribute, learn as Brandt Fellows

Since 2022, the College of Media has provided undergraduate students with real-world experiences through the Mark L. Brandt Public Engagement Fellows program for undergraduates. An estate gift from the U. of I. alumnus provides up to 40 internships each year to College of Media students who work on a variety of college and department initiatives. The students provide key services while gaining vital hands-on experience.



Megan Harding joined IPM last fall as a Crisis Communications Fellow through the Brandt Fellows program. A senior in the College of Media studying journalism and minoring in public relations, her specialized training in crisis communications made her uniquely qualified for the role.

Harding helped IPM by conducting research on how other public media stations were responding to the elimination of federal funding, and she provided recommendations on IPM's communications strategy. She then produced short-form videos in support of public media as an essential resource worthy of investment for our end-of-year fundraising campaign.

"Working with Megan last semester was a distinct pleasure," said Nicky Bennett, digital fundraising manager. "The research and video content she produced was especially helpful to IPM as we continue to grapple with the loss of federal funding. Megan's efforts greatly enhanced IPM's end-of-year fundraising efforts and helped chart the course forward in the new funding landscape."

"This fellowship allowed me to apply concepts and skills I have learned in my classes to a real-world situation," Harding said. "Public media is an invaluable resource, and this fellowship aligned with my values of service and preserving access to information."



A senior in journalism in the College Media, **Adelyn Mui** worked for IPM News as a Brandt Fellow last semester. Prior to her fellowship, Mui had been a reporter for the Illinois Student Newsroom since 2024. The newsroom is a joint effort between IPM and the U. of I. Department of Journalism.

As part of her fellowship, Mui produces and co-hosts the weekly arts/entertainment calendar called WILL Call. She helps curate incoming emails, confirms events, and helps write and deliver the script with IPM **Morning Edition** host Kimberly Schofield. She also updates the accompanying website. She is expected to continue these duties as a Brandt Fellow during the spring semester.

"Adelyn brings a high level of enthusiasm to all of her work," said Reginald Hardwick, IPM news and public affairs director. "The weekly WILL Call segments are a fan favorite of many listeners. In addition to the research, she injects energy and fun into the segments that inform Champaign-Urbana about local activities. She's also quite the audio storyteller. Her segment on Hardy's Reindeer Ranch also aired on NPR's **Morning Edition**, making her one of a few university students nationwide who can claim this honor."

"Through the Brandt Fellow scholarship, I've been able to continue my position as an editor for the Illinois Student Newsroom as well as a radio host for WILL Call," Mui said. "Both of these have given me invaluable experience in hands-on journalism and what it means to work within a newsroom. I'm very grateful to have these opportunities, as they have profoundly shaped me into the journalist I am today."

Thank you, Program Underwriters!

Private support accounts for the largest single source of funds necessary to make Illinois Public Media and the WILL stations great resources for communities across central Illinois.

We appreciate the following organizations that have stepped forward to join the individuals and families who support award-winning public media services.

40 North/88 West	CU Schools Foundation	NAACP of Champaign County
7 Senses	CVH Entertainment	Natural Gourmet
AARP	Dance at Illinois	Neil Street Blues
Abraham Lincoln Presidential Library and Museum	Danville Symphony Orchestra	New Prairie Solar
Abyss Wares	Delta Dental	Osher Lifelong Learning Institute
Allerton Park and Retreat Center	Des Moines Art Center	The Prairie Enthusiasts
Amara Yoga & Arts	Development Foundation	Prairieland Feeds
Ameren Illinois	Divine Not Divided	Pygmalion
Art Mart	Dixon Graphics	Record Swap
Baroque Artists of Champaign-Urbana	Douglass Branch Library	Rental City
Beard Culture Barbershop & Gallery	Enchanted Viola	Russ Rybicki SharePower Responsible Investing
The Beat @ Market Street	European Union Center	Sinfonia da Camera
Beckman Institute for Advanced Science and Technology	Exceptional Artists	Soul on Sunday
Birch Tree Counseling	Experience Champaign-Urbana	Spurlock Museum of World Cultures
Busey	The Gillette Group – Keller Williams	State Farm Center
Campus Middle School for Girls	The Glenwood of Mahomet	Sweeney Brothers Fine Flooring
Center for Advanced Study	Health in Harmony Wellness Center	Symphony Orchestra Guild of Decatur
Champaign County Chamber of Commerce	Housing Authority of Champaign County	Ten Thousand Villages
Champaign Park District	Humanities Research Institute	TrophyTime
Champaign Urbana Public Health District	The Idea Store	TUNE CHI
Champaign-Urbana Spinners and Weavers Guild	Illini Mattress	University of Illinois Department of Electrical and Computer Engineering
Champaign-Urbana Symphony	Illinois Arts Council	University of Illinois Entomology Grad Student Association
Christie Clinic	Illinois State Board of Education	University of Illinois Physics
The CHORALE	Illinois Symphony Orchestra	University of Illinois Student Affairs
City of Champaign Community Coalition	International Galleries	University YMCA
City of Champaign — Equity and Engagement Department	Institute for Genomic Biology	The Upper Bout
City of Urbana Arts and Culture	Iyengar CU Yoga Institute	Urbana 116 Family Engagement Committee
City of Urbana — Market @ The Square	JAC Local 149 Plumbers, Pipefitters & Service Technicians	Urbana Acupuncture
Common Ground Food Co-op	Jay Goldberg Events	Virginia Theatre
Community Shares of Illinois	Krannert Center for the Performing Arts	Wayne Strong Foundation
Countryside School	Landscape Recycling Center	Western Illinois University
C-U BIPOC Artist Collective	Leek and Sons Funeral Home & Cemetery	Winding Ivy Community
C-U Jazz Festival	The Literary	World Harvest Foods
	Live Nation	Yoga Institute of Champaign-Urbana
	Lonestar Lodge #18	
	Mammoth, Inc.	
	Mashawee Restaurant	
	MedServ Equipment Corp	

73% of the NPR audience prefers to shop at businesses that support public radio.

Join this illustrious group of business owners who benefit from reaching an influential audience by underwriting quality and award-winning programs such as: **Morning Edition**, **The 21st Show**, and **All Things Considered**.

Contact our development department at 217-300-3019 for details.

Friends of will
Campbell Hall
300 North Goodwin Avenue
Urbana, IL 61801-2316

MOVING? Let your public broadcasting membership move with you.

Fill out the form below and send it with your address to:

Friends of WILL, 300 North Goodwin Avenue, Urbana, IL 61801-2316

- ☐ Check here if you wish to remove your name from our membership list.
- ☐ Please update my membership with this new address:

Name: _____

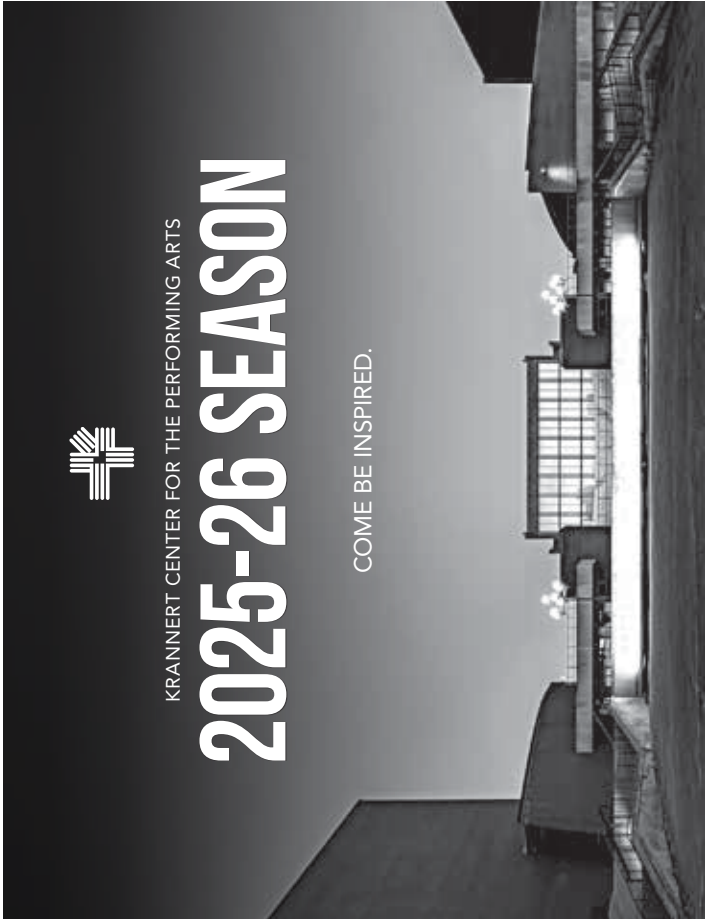
Street: _____

City: _____ State: _____ Zip: _____

Phone: () _____ Email: _____

Go to **will.illinois.edu/optout** to go green & receive Patterns digitally.

NONPROFIT
ORGANIZATION
U.S. POSTAGE PAID
CHAMPAIGN, IL
PERMIT NO. 453



KRANNERT CENTER FOR THE PERFORMING ARTS

2025-26 SEASON

COME BE INSPIRED.



krannert center



LEARN MORE AT
KRANNERTCENTER.COM



**College of Fine
& Applied Arts**