

Patterns

npr PBS

MAY 2025

Friends of WILL Membership Magazine



STORIES OF HOPE

Supporting those with mental
and physical health challenges

Membership Hotline: 800-898-1065
General inquiries: 217-333-7300
Campbell Hall
300 N. Goodwin Ave., Urbana, IL 61801-2316

Mailing List Exchange

Donor records are proprietary and confidential.
IPM does not sell, rent, or trade its donor lists.

Patterns

Friends of WILL Membership Magazine

Editor & Designer: Doris Dahl

Art Director: Kurt Bielema

RADIO
90.9 FM

A mix of classical and other music and NPR information programs, including local news. Also with live streaming on will.illinois.edu.

See pages 4-5.

101.1 FM

Illinois Soul is a mix of Black-hosted NPR and local news programs, smooth jazz, neo soul, R&B, and throwback jams. 101.1 FM is available in the Champaign-Urbana area. It is also heard on 90.9 FM HD2 with live streaming on illinoisoul.org.

See pages 6-7.

580 AM

News and information, NPR, BBC, agriculture, talk shows. Also heard on 90.9 FM HD3 with live streaming on will.illinois.edu. See page 8.

TELEVISION
WILL-HD

All your favorite PBS and local programs, in high definition when available. 12.1: Contact your cable or satellite provider for channel information. See pages 9-16.

WILL Kids 24/7

Around the clock, award-winning children's programming. 12.2: also available on Comcast and Mediacom.

WILL Create

Cooking, travel, home improvement, arts and crafts, and gardening. 12.3: also available on Comcast and Mediacom.

WILL World

PBS documentaries, news, and public affairs. 12.3: also available on Comcast and Mediacom.



will.illinois.edu



facebook.com/ILPublicMedia



[@ILPublicMedia](https://www.instagram.com/ILPublicMedia)



[@ILPublicMedia](https://www.youtube.com/ILPublicMedia)



[@ILPublicMedia](https://twitter.com/ILPublicMedia)

Powering your inbox!

Browse our e-newsletters and sign up to receive behind-the-scenes information in your email inbox that is targeted to your interests. Whether it's news, classical music, or general information about our stations — we have you covered.

will.illinois.edu/signup



**PRINTED WITH
SOY INK™**

Printed with soy ink on recycled, recyclable paper. Printed by Premier Print Group.

Patterns

May 2025, Vol. L, No. 11



May means another school year is winding down on college campuses nationwide as students cram for finals and many prepare to walk across the stage for graduation. It's always a bittersweet time for our staff at Illinois Public Media as we say goodbye to many of the student workers and interns who have contributed so much to our stations and community over the last nine months. (See page 18 for a feature on some of our recent interns.)

This year is especially poignant for the entire University of Illinois Urbana-Champaign campus as we also prepare to say goodbye to U. of I. Chancellor Robert Jones. (See page 7.) After leading our campus for nine years, he will become the new president of the University of Washington system. Chancellor Jones has been an inspiring champion for our entire university community, leading the institution through the uncharted course of a worldwide pandemic and expanding access to low-income in-state students. Chancellor Jones helped Illinois Public Media celebrate two huge milestones — as the featured speaker at our 100th anniversary celebration in 2022, and as the first guest (and a voice in the first song) marking the launch of Illinois Soul in 2024.

So, we bid a fond farewell to Chancellor Jones and the hundreds of students who have contributed to public media's continuous excellence. Good luck to all of you in your future endeavors!

And as always, we deeply appreciate your support that enables Illinois Public Media to continue to provide the programming and services you value.

Moss Bresnahan, Executive Director

X (formerly Twitter): @MossILMedia

**BLOOMINGTON-NORMAL
COMCAST UPDATE:**

We are pleased to share that Comcast has decided to continue to provide WILL-TV to the Bloomington-Normal community (now on channel 1012-HD only). We appreciate all of your passion for our station! If you have any questions, please feel free to reach out to our membership department.

PROGRAMS ON MENTAL HEALTH AND HEALTH & WELLNESS

Life interrupted: When the caregiver needs care

A new film explores the story of Mama Joe, a champion for community and a maternal force whose life of service was interrupted by the early onset of dementia. It also shares the family experience of caring for a loved one with Alzheimer's disease. With the inclusion of scholars and leaders in public health, **My Mama Joe: Hope & Help** is an educational tool to help raise awareness around health and caregiving for elders.



Paul Caldwell is shown caring for his wife, JoeAnna, known to many as 'Mama Joe.'

Mama Joe was a mother to 10 and unofficial mother to many more. Her years of service positively impacted thousands, garnering recognition from the local mayor to the White House. Then in 2015, she was diagnosed with Alzheimer's disease. The film's story arc contrasts her distinguished record of serving others, with her need for full-time compassionate care. The film was produced by Herb Caldwell, who chronicles his family's caregiving journey. Illinois Student Newsroom Editor Christine Herman served as a writer and editor on the production.

"Alzheimer's is a devastating disease that has ripple effects far beyond the patient, impacting their families and loved ones," Herman said. "Caregivers can be caught off guard navigating all the medical and nonmedical challenges that come with the illness, often not knowing where to turn. This film couples powerful storytelling with vital information about this disease, including appearances from professionals in health care, education, research, financial services, senior living, and other industries, highlighting that there is hope and help available."

My Mama Joe: Hope & Help airs at 10 pm Monday, May 5. The film is a core part of The Mama Joe Project, a multimedia and outreach initiative focused on aging and care for elders with Alzheimer's disease and other forms of dementia.

In addition, a film presented by **Independent Lens** follows three families confronting the unique challenges of Alzheimer's. **Matter of Mind: My Alzheimer's** airs at 9 pm Monday, May 5. This film is the final installment in a trilogy on neurodegenerative diseases. **Matter of Mind: My Parkinson's** and **Matter of Mind: My ALS** are available now on the PBS App.

Struggling with mental illness

Great Performances will air a recording of the musical **Next to Normal** that tells the story of a suburban family struggling with the effects of mental illness. Experience this Tony and Pulitzer Prize-winning Broadway musical directed by Michael Longhurst from London's Donmar Warehouse. Grammy nominee Caissie Levy stars. **Next to Normal** airs at 8 pm Friday, May 9.

willam580 SPECIALS

Sundays at 8 pm WILL-AM 580 will present five compelling new mental health programs from APM's **Call to Mind** series.

May 4: Beyond the Mirror: The Challenge of Eating Disorders

Revealing conversations about eating disorders and treatments.

May 11: The Aging Mind

Exploring the unique mental health challenges for older adults.

May 18: Promise and Peril: Technology and Mental Health

Insights into technology's influence on mental health.

May 25: Treating the Young Mind

New ideas on treating children with mental health challenges.

June 1: Silent Battles: Mental Health and Military Service

Understanding the mental health needs of people in the military.

CELEBRATING ASIAN AMERICAN AND PACIFIC ISLANDER HERITAGE MONTH



Artist posts life-size versions of his photos

After a long career as a commercial and portrait photographer, San Francisco artist Michael Jang had a hidden treasure of pictures taken in his 20s — both candid celebrity shots and a down-to-earth cross-section of Chinese American family life rarely captured so playfully. During the pandemic, he set out to share his work with the world via boarded-up storefronts that Jang used to showcase life-size reproductions of his vintage prints. The documentary captures Jang's exploits as his experimental street art morphs into an exploration of his own history and identity. **Who is Michael Jang?** airs on **Independent Lens** at 9 pm Monday, May 19.

A recent political chapter of the Philippines

And So It Begins follows the Philippines' turbulent 2022 presidential race, with the son of ousted former dictator Ferdinand Marcos waging a combative social media campaign against his more progressive opponent, incumbent Vice President Leni Robredo. Following it all is independent journalist and Nobel-winner Maria Ressa, with an eye toward the specter of increasing autocracy. Multiple narratives combine within this no-holds-barred campaign for the most powerful office in the Philippines. **Independent Lens** presents **And So It Begins** at 9 pm Monday, May 12.



America's national night of remembrance

National Memorial Day Concert

2025 honors our country's veterans, servicemen and women, and military families. The concert unites the country in remembrance and appreciation of those who gave their lives for our nation and those who are grieving. Now in its 36th year, this award-winning television event features uplifting musical performances, documentary footage, and dramatic readings. Top pops conductor Jack Everly conducts the National Symphony Orchestra. Military leaders also participate in the concert, offering their unique perspectives on the value and honor of military service and acknowledging the challenges that veterans and their families face. **National Memorial Day Concert 2025** airs at 7 pm and 8:30 pm Sunday, May 25.



Jack Everly

‘Yellow Face’ features playwright’s dilemma

Great Performances presents the Roundabout Theatre Company’s production of David Henry Hwang’s **Yellow Face** at 8 pm Friday, May 16. Inspired by real events, an Asian American playwright (Daniel Dae Kim) who leads protests against yellowface casting in “Miss Saigon,” then mistakenly casts a white actor as the Asian lead in one of his own plays. The repercussions resonate in this farce about the complexities of race. Directed by Leigh Silverman, the acclaimed play was captured during the final week of performances at the Todd Haimes Theatre, a Broadway theater in New York City.



Daniel Dae Kim and Greg Keller.

WWII: Japanese Americans incarcerated



Amache: An American Injustice tells the story of the unjust incarceration of 120,000 innocent Japanese Americans during World War II after the bombing of Pearl Harbor. With a peak population of 7,500, Amache in southeast Colorado became the 10th largest city in the state. Through interviews with survivors and their families, historians, and archeologists, the documentary explores the unconstitutional suspension of the civil rights of Japanese Americans, who — despite the extraordinary loss of homes, property, and freedom — survived their imprisonment with dignity and resilience. **Amache: An American Injustice** airs at 4:30 pm Tuesday, May 6.

Bob Hope performing for our troops

Legendary entertainer Bob Hope and his troupe of performers traveled more than 80,000 miles during World War II to entertain the troops. There were several close calls where Hope and his fellow entertainers were almost killed. They often performed near the frontlines in Europe and the Pacific as part of an overall Hollywood effort to make sure stars brought some of America to the battle zones. Using animated maps and interviews with Hollywood historians, authors, and combat veterans, **Miles, Morale, and Memories: Bob Hope and World War II** examines Hope’s impact on World War II and why President Franklin D. Roosevelt asked some of Hollywood’s top radio and movie stars to hold a microphone instead of a gun in the war. The special airs at 9 pm Monday, May 26.



WEEKDAYS

6 am

NPR Morning Edition with Leila Fadel, Steve Inskip, A Martínez, and Michel Martin

9 am

Classic Mornings with Vic Di Geronimo
Vic makes each morning a classic morning!

Noon

Anytime Classical

NPR News Headlines at 1:01 and 3:01.

1 pm

Afternoon Classics

5 pm

NPR All Things Considered with Ailsa Chang, Mary Louise Kelly, Ari Shapiro, and Juana Summers

6 pm

The 21st Show with Brian Mackey

7 pm Monday-Wednesday

The Evening Concert

Monday-Wednesday and Friday at 7 pm and 6 and 7 pm Sundays. Listings may change.

Monday:

The New York Philharmonic This Week

- 5/5 Brahms: Symphony No. 4
Schoenberg: Gurrelieder: "Song of the Wood"
Schoenberg: Verklarte Nacht
Brahms: Variations on a Theme of Haydn
- 5/12 Milhaud: Suite française, Op. 248
Stravinsky: Firebird Suite
Hindemith: When Lilacs Last in the Dooryard Bloom'd: Requiem for Those We Love
Rodgers: The Carousel Waltz
- 5/19 Haydn: Symphony No. 95 in C Minor, Hob. I:95
Martinu: Incantation, Piano Concerto No. 4
Sibelius: Symphony No. 1 in E Minor, Op. 39
- 5/26 Wagner (Arr. Maazel): The Ring Without Words

Tuesday:

Chicago Symphony Orchestra Radio Broadcast

- 5/6 **Mäkelä Conducts Mahler 5**
Jean Sibelius: The Swan of Tuonela
Jimmy López: Aino
Gustav Mahler: Symphony No. 5
- 5/13 **Thielemann Conducts Bruckner**
Anton Bruckner: Symphony No. 8 in C Minor
Richard Wagner: Prelude and Liebestod from Tristan and Isolde
- 5/20 **Giulini Conducts Mahler 9**
Sergei Prokofiev: Symphony No. 1 in D Major
Gustav Mahler: Symphony No. 9
- 5/27 **Haitink Conducts Mahler 2**
Alexander Scriabin: The Poem of Ecstasy, Op. 54
Gustav Mahler: Symphony No. 2 in C Minor

Wednesday:

WFMT Orchestra Series: San Francisco Symphony

- 5/7 **California Festival: From the Edge**
Stravinsky: Octet for Wind Instruments
Gabriella Smith: Breathing Forests
Stravinsky: (Orch. Steven Stucky): Les Noces
- 5/14 **Dudamel Conducts Brahms 2**
Gabriela Ortiz: Kauyumari
Gonzalo Grau: Odisea Concerto for Venezuelan Cuatro and Orchestra
Brahms: Symphony No. 2 in D Major
- 5/21 **MTT Conducts Mahler 5**
Mahler: Symphony No. 5 in C-sharp Minor
- 5/28 **Esa-Pekka Salonen & Julia Fischer**
Stravinsky: Pulcinella
Brahms: Violin Concerto in D major, Op. 77

7 pm Thursday

Classical Music

8 pm Thursday

The Middle with Jeremy Hobson

This nonpartisan live call-in talk show focuses on elevating the voices of the people in the middle of the country.

7 pm Friday

The Santa Fe Chamber Music Festival

- 5/2 Handel: Water Music Suite in D Major
Handel: Water Music Suite in G Major
Bernard Herrmann: Souvenirs de Voyage
Jean-Philippe Rameau: Concert No. 1 in C Minor
Brahms: Piano Quintet in F Minor
- 5/16 John Williams: Theme from Schindler's List
Mieczyslaw Weinberg: Piano Quintet, Op. 18
- 5/23 Schumann: Arabeske in C Major, Op. 18
Schubert: Piano Trio in E-flat Major, D. 929
- 5/30 Mauro Giuliani: Grand duo concertante in A Major for Violin and Guitar, Op. 85
Béla Bartók Sonata No. 1 in C-sharp Minor for Violin and Piano, Sz. 75

8 pm Friday

Atomic Age Cocktail Party with Jason Croft

- 5/2 **Atomic Sampler Spring 2025**
A tasting menu, of sorts, for all the great styles you hear on the program.
- 5/9 **Change in the Weather** (encore)
Hi-fi songs about all sorts of weather.
- 5/16 **Light and Breezy**
Soft sounds just right for springtime.
- 5/23 **Irving Berlin** (encore)
Spotlight on one of the big Great American Songbook composers!
- 5/30 **That Nelson Riddle Touch**
A look at all the musical magic that Nelson Riddle brought to recording sessions.

9 pm Friday

Classical Music

SATURDAYS

7 am

NPR Weekend Edition
with Scott Simon

9 am

Classics By Request

Send requests to Vincent Trauth at classreq@illinois.edu or leave a message at **217-265-5064**.

11 am

Classics of the Phonograph

John Frayne's weekly exploration of memorable recordings from the 20th century.

- 5/3 **Kurt Weil: Successful Cross-Over from Weimar Berlin to Broadway**
- 5/10 **Some of the Mysteries of the Mozart Requiem**
- 5/17 **The Bell Telephone and Many Other Hours**
- 5/24 **Duo Piano Teams, the Labeques, and Others**
- 5/31 **Great Opera Recordings: Erich Kleiber Conducts Richard Strauss' "Der Rosenkavalier"**

Noon**Afternoon at the Opera**

All performances with the Metopera Ensemble.

- 5/3 **Il Trovatore** (Verdi) Daniele Callegari, cond., with Michael Fabiano (Manrico), Rachel Willis-Sørensen (Leonora), Jamie Barton (Azucena), and Igor Golovatenko (Count di Luna).
- 5/10 **Listeners' Choice: Great Opera Broadcasts:** Turandot (Puccini), with Birgit Nilsson (Turandot), Franco Corelli (Calaf), Mirella Freni (Liu), and Bonaldo Giaiotti (Timur).
- 5/17 **Salome** (R. Strauss). Yannick Nézet-Séguin, cond., with Elza van den Heever (Salome), Peter Mattei (Jochanaan), Gerhard Siegel (Herod), and Michelle DeYoung (Herodias).
- 5/24 **Antony and Cleopatra** (John Adams). John Adams, cond., with Julia Bullock (Cleopatra), Gerald Finley (Antony), Paul Appleby (Caesar), and Elizabeth DeShong (Octavia).
- 5/31 **Il Barbiere di Siviglia** (Rossini). Giacomo Sagripanti, cond., with Andrey Zhilikhovsky (Figaro), Aigul Akhmetshina (Rosina), Jack Swanson (Count Almaviva), and Peter Kálmán (Dr. Bartolo).

4 pm

Classical Guitar Alive! with Tony Morris

5 pm

Performance Today Weekend with Fred Child
Classical music in concert from American Public Media studios and sites across the nation and around the world, as well as classical music news, interviews, and features.

7 pm

The Midnight Special with Marilyn Rea Beyer
A lively potpourri of folk, Celtic and bluegrass, show and novelty tunes, and hilarious comedy routines.

9 pm

American Parlor Songbook with JP Houston and Julie Van Dusen features clever songs, charming stories, and hilarious sketches.

NPR News Headlines at 9:01.

10 pm

Jazz Night In America with Christian McBride

11 pm

Atomic Age Cocktail Party with Jason Croft
(See Friday at 8 pm.)

midnight

Classics All Night

SUNDAYS**6 am**

A Joyful Noise with Brian Lauritzen

7 am

NPR Weekend Edition with Ayesha Rascoe

9 am

Sunday Baroque

Hosted by Suzanne Bona.

NPR News Headlines at 9:01 and 10:01.

1 pm

Pipedreams with Michael Barone

3 pm

Performance Today Weekend

5 pm

Reel Music with Matt Rogers

Featuring music from the movies every week for an hour of orchestral themes from cinema's best film scores.

6 pm

The Evening Concert

The Chamber Music Society of Lincoln Center

- 5/4 Mikhail Glinka: Variations on a theme of Mozart Mily Balakirev: "Song of the Goldfish" for Voice and Piano
Mikhail Glinka: "The Lark" from A Farewell to St. Petersburg for Voice and Piano
Sergei Rachmaninoff: "These Summer Nights" for Voice and Piano, Op. 14, No. 5
Rimsky-Korsakov: Quintet in B-flat Major for Flute, Clarinet, Bassoon, Horn, and Piano
- 5/11 Puccini: Scherzo for String Quartet
Anton Reicha: Quintet in B-flat Major for Clarinet, Two Violins, Viola, and Cello, Op. 89
Jiping Zhao/Lin Zhao: Red Lantern for Pipa and String Quartet
- 5/18 Josef Suk: Quartet in A Minor for Piano, Violin, Viola, and Cello, Op. 1
Mendelssohn: Trio No. 2 in C Minor for Piano, Violin, and Cello, Op. 66
- 5/25 Samuel Coleridge-Taylor: Quintet in G Minor for Piano, Two Violins, Viola, and Cello, Op. 1
Dvořák: Sextet in A Major for Two Violins, Two Violas, and Two Cellos, Op. 48

7 pm

Fiesta! with Elbio Barilari

5/4 **Paquito D'Rivera**

Winner of 12 Grammys, D'Rivera is also a very exciting composer of chamber and orchestra music.

5/11 **Living Composers from Mexico**

A selection of delightful pieces by living Mexican composers.

5/18 **Symphonic Poems from Venezuela and Mexico**

Celebrating the symphonic poem.

5/25 **Leo Brouwer: A Living Master**

Now in the ninth decade of his life, Brouwer is one of the few great living masters of classical music.

8 pm

Harmonia with Angela Mariani

Baroque and early music.

9 pm

Jazz Night In America with Christian McBride

10 pm

Classical Music

NPR News Headlines at 11:01

overnight

Classical Music

Illinois
ARTS
Council

Programs on WILL Radio are partially sponsored by a grant from the Illinois Arts Council, a state agency.



Share your love for Illinois Soul
You can email us Illinois-Soul@illinois.edu
or leave a voicemail at 217-244-1989

WILL-FM 101.1 and 90.9 FM HD2 · streaming at illinoissoul.org

Monday - Friday		Saturday	Sunday
Jazz Network	5:00	Jazz Network	Jazz Network
NPR Morning Edition with Kimberly Schofield	6:00	R&B	NPR Weekend Edition
	7:00		
	8:00		
R&B Smooth Jazz Neo-Soul	9:00	Dialogue with Kennedy Vincent 5/3 Interview with Chancellor Robert Jones	The Cut (featuring gospel music)
	10:00		
	11:00		
	Noon	Cafe Mocha Radio	Classic R&B
	1:00	R&B	
	2:00		
	3:00		
	4:00	The Wind Down with Will Downing	
	5:00		
1A	6:00	Cool Jazz Countdown	Roots of Smooth
It's Been a Minute (M) Dialogue (Tu) Reveal (W) Throughline (Th) Code Switch/Life Kit (F)	7:00	Catch the Flo	New Urban Jazz Lounge
Jazz Network	8:00	The Soul of Jazz	Pillow Talk
	9:00		
	10:00	Jazz After Hours	Jazz Network
	11 pm- 2 am		
	3-4 am	Jazz Network	

facebook.com/IllinoisSoul

[@illinoissoul](https://instagram.com/illinoissoul)

[@illinois_soul](https://twitter.com/illinois_soul)

Jill Clements, Illinois Soul Manager

TOP 5 R&B Artists

Tying in to our on-air series, we feature the Top 5 R&B artists according to community members, staff members, and VIPs.



Tracy Parsons is responsible for coordinating and facilitating the work of the Champaign Community Coalition. He helps the coalition successfully implement sustainable strategies that improve the lives of area youth and families through an effective collaboration of diverse community partners and service agencies.

- His top 5:
- 1. James Brown
 - 2. George Duke
 - 3. Roy Ayers
 - 4. Soul II Soul
 - 5. Loose Ends



Chancellor Jones interview to air this month

Nearly nine years after arriving at the University of Illinois Urbana-Champaign, Chancellor Robert Jones will soon step down. He will begin his role as president of the University of Washington on Aug. 1. Illinois Public Media News and Public Affairs Director Reginald Hardwick sat down with Chancellor Jones in our studio to reflect on his time here and the future.

A Georgia native and son of a sharecropper, Jones is a crop scientist who served as president of the State University of New York in Albany prior to coming to the U. of I. in 2016. He also is a Grammy Award winner who performed with the Sounds of Blackness, a Minneapolis-based gospel music ensemble.

Jones and Hardwick covered many topics during the interview on April 4.

"We are hiring the best and the brightest faculty. We have 15,000 more students at this university than we had when I came here (in the fall of) 2016," Jones said. "We hope we've left a very broad, sweeping impact. And my goal is to always come into a place and do all you can to leave it better than you found it, and I think we've had some success in that regard."

Jones also talked about the lessons learned during the COVID-19 pandemic and the state budget impasse, the current battle in higher education with the Trump administration, and why he's leaving Illinois, which is like "leaving home."

Interview with Chancellor Robert Jones, an **IPM News Special**, will air on WILL-TV at 7:30 pm, Thursday, May 1, and on Illinois Soul at 11 am Saturday, May 3 and at 7 pm Tuesday, May 6.



**IPM News Special:
Interview with Chancellor
Robert Jones**

WILL-TV

7:30 pm Thursday, May 1

**Illinois Soul's
Dialogue**

• 11 am Saturday, May 3

• 7 pm Tuesday, May 6

Illinois Soul co-hosts Juneteenth concert

Join us on Wednesday, June 18 for the second annual Illinois Soul Juneteenth communitywide concert in conjunction with Krannert Center for the Performing Arts. This free celebration on the eve of Juneteenth will be from 6–7:30 pm on Krannert Center's Stage 5. Join us to celebrate the holiday that commemorates the end of slavery in the U.S. Stay tuned to Illinois Soul for our big artist announcement. There will be plenty of promotional giveaways, along with a cash bar. Join us immediately following the concert for the "official" after party at Neil Street Blues, 301 N. Neil St. #106 in downtown Champaign.



Chicago native and national recording artist Syleena Johnson performed at our Uncorked Juneteenth celebration last year with record-breaking attendance.

Monday - Friday				Saturday		Sunday		
NPR Morning Edition with Kimberly Schofield				5:00	BBC World Service	BBC World Service		
				6:00	Commodity Week	Inside Europe		
				6:30	State Week in Review			
				7:00	NPR Weekend Edition	NPR Weekend Edition		
1A				9:00	The Splendid Table	It's Been A Minute		
				10:00	Wait Wait ... Don't Tell Me!			
The 21st Show with Brian Mackey				11:00	Statewide	Code Switch/Life Kit		
Here & Now with Jason Croft				Noon	This American Life	Wait Wait ... Don't Tell Me!		
				The Middle (F repeat)	1:00	The Moth Radio Hour	The Treatment	
							State Week in Review	
The Closing Market Report				2:00	Radiolab	Reveal		
BBC Newshour	Commodity Week (F)			2:30				
Fresh Air				3:00	TED Radio Hour	On the Media		
All Things Considered with Jim Meadows				4:00	All Things Considered	All Things Considered		
				5:00	Hidden Brain	People's Pharmacy		
				6:00	Big Picture Science	Travel with Rick Steves		
The 21st Show (repeat)				7:00	Living on Earth	Throughline		
Fresh Air (M-Tu)	Dialogue (W)	The Middle (Th)	Science Friday (F)	8:00	Latino USA	Special Programming		
BBC World Service		Fresh Air (W –F repeat)		9:00	Alternative Radio	To the Best of Our Knowledge		
				10:00	Science Friday (repeat)			
				11:00	Left, Right, and Center	Le Show		
				12:00- 5 am	BBC World Service	BBC World Service		

Bold Listing = National/International News Lillie Duncanson, Director of Broadcast Operations



AGRICULTURE

Todd Gleason, host, **Closing Market Report** and **Commodity Week**:

Opening Market Report: 8:55 am; **Market Update:** 10:58 am; **Midday Market Report:** 12:58; **Closing Market Report:** 2:06. **Fridays: Commodity Week:** 2:30; **Grain Market Summary:** 4:32.

To listen to archived Ag reports, sign up for the Illinois Public Media Ag e-newsletter, or download our agricultural podcasts. Visit www.willag.org.



IPM NEWS • IPMnewsroom.org

Reginald Hardwick, news and public affairs director, Illinois Public Media

The news from Illinois Public Media's award-winning staff of reporters, hosts, and producers can be heard during **Morning Edition**, **The 21st Show**, **Here & Now**, and **All Things Considered**:

Mae Antar, Jason Croft, Christine Hatfield, Emily Hays, Kulsoom Khan, Linda Kenyon, Brian Mackey, Jim Meadows, Steve Morck, Stephanie Mosqueda, David Pierce, Kimberly Schofield, Tinisha Spain, Arjun Thakkar, Kennedy Vincent, and Jose Zepeda.

WILL Call: Wednesdays at 6:45 & 9:45 am and Thursdays at 5:44 pm on AM 580 and FM 90.9



WEATHER

Monday-Friday

Weather forecasts from meteorologist Andrew Pritchard throughout the day.

Monday - Friday		Saturday	Sunday
Newsline	5:00	Mister Rogers' Neighborhood	Mister Rogers' Neighborhood
Classical Stretch (M,W,F) Sit and Be Fit (T, Th)	5:30	Arthur	Arthur
Wild Kratts	6:00	Wild Kratts	Wild Kratts
Alma's Way 5/1 Acoustic Rooster (p.13)	6:30	Alma's Way	Alma's Way
Lyla in the Loop	7:00	Lyla in the Loop	Lyla in the Loop
Carl the Collector	7:30	Carl the Collector	Carl the Collector
Daniel Tiger's Neighborhood	8:00	Daniel Tiger's Neighborhood	Daniel Tiger's Neighborhood
Rosie's Rules	8:30	Rosie's Rules	Rosie's Rules
Sesame Street	9:00	Sesame Street	Sesame Street
Work It Out Wombats!	9:30	Work It Out Wombats!	Work It Out Wombats!
Donkey Hodie 5/23 Acoustic Rooster (p. 13)	10:00	MotorWeek	Consuelo Mack WealthTrack
Pinkalicious & Peterrific	10:30	Garden SMART	To the Contrary with Bonnie Erbe
Elinor Wonders Why	11:00	Mid American Gardener	Rick Steves' Europe
Nature Cat	11:30	Christina Cooks: Back to the Cutting Board 5/31 Easy Yoga: The Secret to Strength and Balance	Market to Market
Molly of Denali 5/27 Acoustic Rooster (p. 13)	Noon	America's Test Kitchen	5/4 Noon Sanditon on MASTERPIECE 5:00 PBS News Weekend 5:30 Ireland with Michael 6:00 Miss Fisher's Murder Mysteries 5/11 Noon Sanditon on MASTERPIECE 5:00 PBS News Weekend 5:30 Ireland with Michael 6:00 Miss Fisher's Murder Mysteries 5/18 Noon Sanditon on MASTERPIECE 5:00 PBS News Weekend 5:30 Ireland with Michael 6:00 Miss Fisher's Murder Mysteries 5/25 Noon Sanditon on MASTERPIECE 5:00 PBS News Weekend 5:30 Rick Steves' Europe 6:00 Miss Fisher's Murder Mysteries Note: We will have special programming throughout the day on Saturday, May 31. See page 16.
Xavier Riddle and the Secret Museum	12:30	Cook's Country 5/31 ATK Celebrates 25 Years	
Arthur	1:00	Christopher Kimball's Milk Street Television	
Odd Squad	1:30	America the Bountiful	
M Father Brown Tu Antiques Roadshow W Finding Your Roots Th Nature F NOVA	2:00	Key Ingredient with Sherri Castle 5/31 Cooking with Legends	
	2:30	Lidia's Kitchen	
M 5/5, 12 Miss Fisher Mod. Murder Mysteries 5/19, 26 Sister Boniface Mysteries Tu American Masters/American Experience 5/27 Bob Hope & WWII (see p. 3) W 5/7, 14 Pati Jinich Explores PanAmericana 5/21 Am. Exp.: Mr. Polaroid (p. 11) 5/28 Armed with Language Th 5/1 Rivers of Life: Mississippi 5/8 Bugs That Rule the World (3:30) 5/15, 22, 29 Bugs That Rule the World F NOVA	3:00	Joseph Rosendo's Steppin' Out	
	3:30	Samantha Brown's Places to Love 5/31 Rick Steves Experiencing Europe	
M Secrets of the Royal Palaces Tu 5/6 Amache: An American Injustice (4:30) 5/13 Beyond the Canvas (4:30) 5/27 Timeless Patriotism: Guam and WWII W 5/7 Pati Jinich Explores PanAmericana 5/14 Boblo Boats: A Detroit Ferry Tale 5/21 Photographic Justice: Corky Lee Story 5/28 Aging in America: Survive or Thrive Th Spy in the Ocean, A Nature Miniseries 5/8 Insecta: Science That Stings (4:30) F Genius by Steven Hawking 5/30 NOVA	4:00	This Old House	
	4:30	Ask This Old House	
DW News	5:00	PBS News Weekend	
BBC World News America	5:30	Antiques Roadshow	
PBS News Hour	6:00		
	6:30	As Time Goes By	



See page 13 for more about **Acoustic Rooster** a new animated special on jazz.

Lillie Duncanson, Director of Broadcast Operations



WILL Kids 24/7 on 12.2
For the full WILL Kids 24/7 schedule, go to www.illinois.edu/tv/schedule



View the Create & World schedules at www.illinois.edu/tv/schedule

‘Miss Austen’ premieres May 4



Miss Austen on **MASTERPIECE** takes a literary mystery and reimagines it as a fascinating, witty, and heart-breaking story of sisterly love. Notoriously known for burning her sister Jane's letters, did Cassandra Austen truly protect her famous sister's reputation? The drama begins in 1830 as Cassandra races to see her friend Isabella following her father's death. Of course she is there to help, but she is desperate to find a stash of private letters which could destroy Jane's reputation. **Miss Austen** premieres on **MASTERPIECE** at 8 pm Sunday, May 4, and concludes with a special two-episode series finale on May 18. All four episodes are available to binge on May 4 in WILL Passport.

The lives and loves of the medical team of Good Karma

Set in a coastal town in tropical South India, **The Good Karma Hospital** tells the story of junior doctor, Ruby Walker, who arrives in India looking for a job and a distraction from her heartbreak. She anticipates the sunshine, the palm trees, and picture-perfect beaches, but not the realities of work, life, and even love at an under-resourced and overworked cottage hospital. The series follows the lives and loves of a team of hardworking medics as they travel the red dirt roads to patients staying in five-star beach resorts or inland through lush green jungles to help local villagers. **The Good Karma Hospital** premieres at 10 pm Thursday, May 15.



‘Kiss Me, Kate’ performance featured



Stephanie J. Block and Adrian Dunbar.

Great Performances presents last year's West End production of **Kiss Me, Kate**, a "Golden Age" Broadway musical comedy that centers on a battle of the sexes behind the scenes of a production of Shakespeare's "The Taming of the Shrew." The original production was Cole Porter's most successful musical and opened on Broadway in 1948, running for more than 1,000 performances. In this production, Tony Award winner Stephanie J. Block makes her West End debut as Lilli Vanessi joined by Irish actor Adrian Dunbar as Fred Graham in a backstage comedy of star-crossed romance. Tony winner Bartlett Sher directs. The production features classic songs, including "Another Op'nin,' Another Show," "So In Love," and "Brush Up Your Shakespeare." **Kiss Me, Kate** airs at 8 pm Friday, May 30.



Credit: Ann Johnson Prum



Credit: Geraint Warrington



Credit: Andy Young

The crucial role of bugs

Explore the fascinating world of bugs, the planet's most populous but least appreciated creatures in a new four-part series. **Bugs that Rule the World** recognizes their beauty and ecological importance. From pollinators and insect predators to the clean-up crews purifying our planet, scientists examine the decline of these essential yet least recognized creatures. **Bugs that Rule the World** airs Wednesdays at 9 pm beginning May 7.

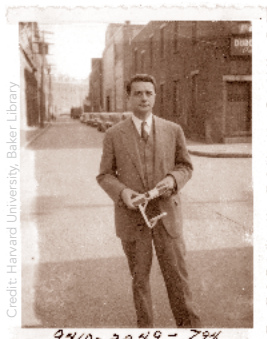
Discover a hummingbird rescue in LA

Amid the glamour of Hollywood, a woman finds herself on a transformative journey as she nurtures wounded hummingbirds, unraveling a visually captivating tale of love, fragility, and healing. Meet Terry Masear, a retired UCLA professor who rescues the hummingbirds that descend on Los Angeles every spring in a seasonal frenzy of breeding. The compassion and empathy that Masear shows her Lilliputian charges serves as a lesson to us all — the delicate beauty in profound acts of kindness. **Nature** presents **Hummingbirds of Hollywood** at 7 pm Wednesday, May 7.



Hummingbird rehabber Terry Masear

The camera that revolutionized an industry



Credit: Harvard University, Baker Library

American Experience introduces viewers to Edwin Land, the visionary scientist and inventor of the Polaroid camera. When it was introduced in 1948, the Polaroid revolutionized amateur photography by providing a photo instantly. By the 1970s, people across the globe were shooting over a billion Polaroids a year. Land became known as one of the most visionary and prolific inventors and entrepreneurs of the 20th century, inspiring the leaders of the 1990s tech boom. **Mr. Polaroid** premieres on **American Experience** at 8 pm Monday, May 19.

Edwin Land holding a Land Camera test photo.

Crashing cars to save lives

Scientists have conducted vehicle safety tests for over 80 years, yet 1.3 million people still die in road accidents annually. While cars are safer than ever, safety experts rely on analyzing individual, small-scale crashes. In **Ultimate Crash Test: Countdown**, **NOVA** reveals a world-first experiment that is enabled by remote-control driving technology. The test will involve triggering and analyzing a multi-vehicle motorway pile-up. **Ultimate Crash Test: Countdown** on **NOVA** aims to unravel the science behind deadly motorway crashes and potentially save lives. It airs in two parts at 8 pm Wednesday, May 7 and May 14.



1 Thursday

- 7:00 Mid American Gardener**
- 7:30 IPM News Special** (TV-G)
Interview with Chancellor Robert Jones. See page 7.
- 8:00 Father Brown** (TV-PG)
The Serpent Within. Season 10, episode 10 of 10. Sullivan's dream of leaving Kembleford is scuppered when he is arrested for receiving stolen goods. *Repeated 1 am 5/2, 7 pm 5/3 & 2 pm 5/5.*
- 9:00 Miss Fisher's Murder Mysteries** (TV-14)
Death Comes Knocking. Season 2, episode 2 of 13. Phryne plays host to ghostly soldiers and exotic spiritualists. *Repeated 2 am 5/2 & 6 pm 5/4.*
- 10:00 Death In Paradise** (TV-PG)
Season 13, episode 7 of 8. The team finds themselves split between Saint Marie and the gorgeous island of Saint Auguste, attempting to investigate the mysterious death of a British tourist. *Repeated 3 am 5/2.*
- 11:00 Amanpour and Company**

2 Friday

- 7:00 Washington Week with the Atlantic**
- 7:30 Firing Line with Margaret Hoover**
- 8:00 Great Performances** (TV-G)
Now Hear This: Barrios: Chopin of the Guitar. Host Scott Yoo explores Agustín Barrios' journey from rural Paraguay to global recognition as a guitar composer. His innovative compositions and passion for Latin American folk music made him a 20th-century icon. *Repeated 3 am 5/5.*
- 9:00 Lang Lang — Favourite Melodies** (TV-G)
This special features world-famous pianist Lang Lang as he takes us on a personal journey through his favorite melodies, often incorporating beautiful movie soundtracks. *Repeated 1 am 5/3 & 4 am 5/5.*
- 10:00 Secrets of the Royal Palaces** (TV-PG)
Greenwich Palace. *Repeated 4 pm 5/5.*
- 11:00 Amanpour and Company**

3 Saturday

- 7:00 Father Brown** (TV-PG)
The Serpent Within. See 8 pm 5/1.
- 8:00 Midsomer Murders** (TV-PG)
A Talent for Life, Parts 1 & 2 of 2. Season 6, episodes 1 & 2 of 10. When the corpses of an affluent pensioner and his young lover are discovered alongside one another by the river, Barnaby and Troy uncover a deep vein of resentment running through the village.
- 10:00 The Brokenwood Mysteries** (TV-14)
Leather and Lace. Season 2, episode 1 of 4. Breen and his rugby team find their coach's body at practice.
- 11:30 ACL 10th Annual Hall of Fame Honors Garth Brooks** (TV-PG)
Austin City Limits Hall of Fame honoree Garth Brooks shares classics and the stories behind the songs in an epic, singalong hour for the series' 50th. The country superstar performs career highlights including "The Dance" and "Friends in Low Places."

4 Sunday

- 7:00 Call the Midwife** (TV-14) (DVS)
Season 14, episode 6 of 8. It's September 1970 and the local dustbin strike leads to a refuse site established outside Nonnatus House. With Rosalind unwell, Joyce takes over her rounds, including a visit to a rude patient. *Repeated 12 am 5/5 & 2 am 5/6.*
- 8:00 Miss Austen on MASTERPIECE** (TV-PG) (DVS)
See page 10. Part 1 of 4. *Repeated 1 am 5/5 & 3 am 5/6.*
- 9:00 Marie Antoinette** (TV-14)
Madame Deficit. Season 2, episode 7 of 8. Marie Antoinette deals with personal grief after the death of her daughter Sophie and faces extortion over stolen love letters. *Repeated 2 am 5/5 & 4 am 5/6.*
- 10:00 The Paris Murders** (TV-14)
Predators. Season 2, episode 7 of 12. After a woman files a rape charge, dozens of similar charges are found in her name. But Chloe sets out to understand what is behind her alleged lies.
- 11:00 Flesh and Blood on MASTERPIECE** (TV-14)
Part 1 of 4. When Vivien introduces Mark to her three grown children, they are suspicious. Meanwhile, their own lives are a mess.

5 Monday

- 7:00 Antiques Roadshow** (TV-G)
Celebrating Asian-Pacific Heritage.
- 8:00 Antiques Roadshow** (TV-G)
Santa Clara, Hour 3.
- 9:00 Independent Lens** (TV-PG) (DVS)
Matter of Mind: My Alzheimer's. See page 1. *Repeated 1 am 5/6, 3 am 5/7 & 4 am 5/11.*
- 10:00 My Mama Joe: Hope & Help** (TV-G)
See page 1.
- 11:00 Amanpour and Company**

6 Tuesday

- 7:00 Finding Your Roots** (TV-PG) (DVS)
Children of Exile. Henry Louis Gates Jr. retraces the ancestral journeys of David Chang and Raul Esparza, whose families fled their homelands, leading them to find lost parts of themselves along the way. *Repeated 2 pm 5/7 & 4 am 5/8.*
- 8:00 Pati Jinich Explores Panamericana** (TV-PG)
Juneau & Whitehorse — Sister Cities. Part 2 of 3. Jinich explores the sister cities of Alaska's capital, Juneau, and the capital of Canada's Yukon Territory, Whitehorse. She finds a pioneering culture of artistry and entrepreneurship thriving alongside the unforgiving wilderness. *Repeated 12:30 am 5/7 & 3 am 5/8.*
- 9:00 Frontline**
Antidote. This film is a stunning and immersive look at the cost of opposing Russian President Vladimir Putin. It chronicles the lives of Christo Grozev, a Bulgarian investigative journalist, and Evgenia Kara-Murza, the wife of a prominent political activist. *Repeated 1:30 am 5/7.*
- 10:30 History with David Rubenstein**
- 11:00 Amanpour and Company**

Let's groove with 'Acoustic Rooster'

A new one-hour special from PBS KIDS features a guitar-strumming rooster who joins a barnyard band and uses the magic of jazz to spark a love for music as it supports personal growth.

Acoustic Rooster and his Barnyard Band, based on the award-winning children's book of the same name by Kwame Alexander, features four original songs and introduces Rooster and his friends. The talented but self-centered rooster is a star on solo guitar, but he must learn new skills to play together in a jazz band. The special premieres on WILL-TV at 6:30 am Thursday, May 1 (see



page 9 for other broadcast times). You also can stream it on pbskids.org and the PBS KIDS YouTube channel.

In addition, there is an interactive game that allows kids to create their own music and play along with their favorite songs from the show. Twenty three-minute long digital shorts called **Jazzy Jams** offer a fresh adventure and original song. Learn more at pbskids.org.

7 Wednesday

- 7:00 Nature** (TV-PG) (DVS)
Hummingbirds of Hollywood. See page 11. Repeated 2 pm 5/8.
- 8:00 NOVA** (TV-14)
Ultimate Crash Test: Countdown. See page 11. Part 1 of 2. Repeated 2 pm 5/9.
- 9:00 Bugs That Rule the World** (TV-PG)
Insect Apocalypse. Part 1 of 4. See page 11. Repeated 1 am 5/8, 3:30 pm 5/8 & 1 am 5/11.
- 10:00 Spy in the Ocean, A Nature Miniseries** (TV-G) (DVS)
Deep Thinkers. Part 1 of 4.
- 11:00 Amanpour and Company**

8 Thursday

- 7:00 Mid American Gardener**
- 7:30 Ask This Old House** (TV-G)
AC Airflow Issue, Shellac Removal.
- 8:00 Father Brown**
The Kembleston Olimpicks. Season 11, episode 1 of 10. Brown investigates when rivalries escalate to murderous heights. Repeated 1 am 5/9, 7 pm 5/10 & 2 pm 5/12.
- 9:00 Miss Fisher's Murder Mysteries** (TV-14)
Dead Man's Chest. Season 2, episode 3 of 13. Buried treasure and pirate legends bubble to the surface. Repeated 2 am 5/9 & 6 pm 5/11.
- 10:00 Death In Paradise** (TV-PG)
Season 13, episode 8 of 8. A passenger boards a flight to Dominica, vanishes mid-flight, and then is found dead in Saint Marie. Repeated 3 am 5/9.
- 11:00 Amanpour and Company**

9 Friday

- 7:00 Washington Week with the Atlantic**
- 7:30 Firing Line with Margaret Hoover**
- 8:00 Great Performances** (TV-14)
Next to Normal. See page 1. Repeated 1:30 am 5/10.
- 10:30 Secrets of the Royal Palaces** (TV-PG)
Love and Marriage. Repeated 4 pm 5/12.
- 11:30 Amanpour and Company**

10 Saturday

- 7:00 Father Brown**
The Kembleston Olimpicks. See 8 pm 5/8.
- 8:00 Midsomer Murders** (TV-PG)
Death and Dreams, Parts 1 & 2 of 2. Season 6, episodes 3 & 4 of 10. Reunited with an old acquaintance in the guise of Dr. Jane Moore, Barnaby is called in to investigate an apparent suicide.
- 10:00 The Brokenwood Mysteries** (TV-14)
To Die Or Not to Die. Season 2, episode 2 of 4. A young cast member, Ben Faulkner, dies at the end of a Hamlet performance.
- 11:30 Austin City Limits** (TV-PG)
Maren Morris.

11 Sunday

- 7:00 Call the Midwife** (TV-14) (DVS)
Season 14, episode 7 of 8. Joyce faces a disciplinary hearing over a recent complaint. Dr. Turner volunteers at a methadone clinic to treat heroin addiction. Repeated 12 am 5/12 & 2 am 5/13.
- 8:00 Miss Austen on MASTERPIECE** (TV-PG) (DVS)
See page 10. Part 2 of 4. Repeated 1 am 5/12 & 3 am 5/13.
- 9:00 Marie Antoinette** (TV-14)
The End of the Beginning. Season 2, episode 8 of 8. Amid the revolution's advance, Marie Antoinette struggles to support Louis' rule. When he succumbs to depression, she bravely steps up to rule in his place. Repeated 2 am 5/12 & 4 am 5/13.
- 10:00 The Paris Murders** (TV-14)
Between Two. Season 2, episode 8 of 12. When the lifeless body of a sports teacher is found castrated, the prime suspect is a woman who seems to have a personal vendetta against men.
- 11:00 Flesh and Blood on MASTERPIECE** (TV-14)
Part 2 of 4. Vivien and Mark grow closer as Helen, Jake, and Natalie get progressively unhinged. Mary does some investigating.

12 Monday

- 7:00 Antiques Roadshow** (TV-G)
Never Seen That Before!
- 8:00 Antiques Roadshow** (TV-G)
Charleston, Hour 1.
- 9:00 Independent Lens** (TV-14) (DVS)
And So It Begins. See page 2. *Repeated* 2 am 5/14 & 2 am 5/18.
- 10:30 Aging Matters: Women Unseen** (TV-PG)
This special explores ways to empower older women to ensure continued dignity and a consistent quality of life.
- 11:00 Amanpour and Company**

13 Tuesday

- 7:00 Finding Your Roots** (TV-PG) (DVS)
Far from Home. Henry Louis Gates Jr. maps the family trees of pop icon Cyndi Lauper and actors Jamie Chung and Danny Trejo, exploring records in Italy, Korea, and Mexico to uncover ancestors whose stories were lost when their families immigrated to America. *Repeated* 2 pm 5/14 & 4 am 5/15.
- 8:00 Patti Jinich Explores Panamericana** (TV-PG)
Alberta — Canada's Changing Heartland. Part 3 of 3. In Canada's heartland, Alberta, Jinich dives into cowboy culture and learns how thriving immigrant communities in Edmonton and Calgary are reshaping the Canadian identity. *Repeated* 3 pm 5/14 & 3 am 5/15.
- 9:00 American Experience** (TV-PG) (DVS)
Plague at the Golden Gate. Over 100 years before the COVID-19 pandemic set off a nationwide wave of fear and anti-Asian sentiment, an outbreak of bubonic plague in San Francisco's Chinatown unleashed a similar crisis. *Repeated* 3 pm 5/20.
- 11:00 Amanpour and Company**

14 Wednesday

- 7:00 Nature** (TV-G) (DVS)
My Garden of a Thousand Bees. A wildlife cameraman spends his time during the pandemic lockdown filming the bees in his urban garden and discovers the many diverse species and personalities that exist in this insect family. *Repeated* 2 pm 5/15.
- 8:00 NOVA** (TV-14)
Ultimate Crash Test: Impact. See page 11. Part 2 of 2. *Repeated* 2 pm 5/9.
- 9:00 Bugs That Rule the World** (TV-PG)
Lifegivers. Part 2 of 4. See page 11. *Repeated* 1 am 5/15, 3 pm 5/15 & 1 am 5/18.
- 10:00 Spy in the Ocean, A Nature Miniseries** (TV-PG) (DVS)
Deep Feelings. Part 2 of 4. Spy creatures explore animal emotions and the deep feelings we share. *Repeated* 4 pm 5/15.
- 11:00 Amanpour and Company**

15 Thursday

- 7:00 Mid American Gardener**
- 7:30 Prairie Fire** (TV-G)
See page 19 for more on our collaboration with the College of Media to mentor students in filmmaking.
- 8:00 Father Brown**
The Forensic Nun. Season 11, episode 2 of 10. Father Brown investigates when his old friend Sister Boniface is implicated in the murder of a renowned artist. *Repeated* 1 am 5/16, 7 pm 5/17 & 2 pm 5/19.
- 9:00 Miss Fisher's Murder Mysteries** (TV-14)
Deadweight. Season 2, episode 4 of 13. The gaiety of St. Kilda's famous Esplanade is marred by the violence of gang warfare and the police who struggle to control it. *Repeated* 2 am 5/16 & 6 pm 5/18.
- 10:00 The Good Karma Hospital** (TV-14)
Season 1, episode 1 of 6. See page 10. *Repeated* 3 am 5/16.
- 11:00 Amanpour and Company**

16 Friday

- 7:00 Washington Week with the Atlantic**
- 7:30 Firing Line with Margaret Hoover**
- 8:00 Great Performances** (TV-14)
Yellow Face. See page 3. *Repeated* 1 am 5/17 & 3 am 5/19.
- 10:00 Secrets of the Royal Palaces** (TV-PG)
Private Life. *Repeated* 4 pm 5/19.
- 11:00 Amanpour and Company**

17 Saturday

- 7:00 Father Brown**
The Forensic Nun. See 8 pm 5/15.
- 8:00 Midsomer Murders** (TV-PG)
Painted In Blood, Parts 1 & 2 of 2. Season 6, episodes 5 & 6 of 10. Joyce Barnaby finds a dead woman and unwittingly uncovers a nest of plots and double-dealings.
- 10:00 The Brokenwood Mysteries** (TV-14)
Catch of the Day. Season 2, episode 3 of 4. Jared discovers a severed human hand in a crayfish pot.
- 11:30 Austin City Limits** (TV-PG)
Pavement.

18 Sunday

- 7:00 Call the Midwife** (TV-14) (DVS)
Season 14, episode 8 of 8. The challenges of midwifery hit close to home when a home for mothers and babies is evacuated. *Repeated* 12 am 5/19 & 2 am 5/20.
- 8:00 Miss Austen on MASTERPIECE** (TV-PG) (DVS)
See page 10. Part 3 of 4. *Repeated* 1 am 5/19 & 3 am 5/20.
- 8:57 Miss Austen on MASTERPIECE** (TV-PG) (DVS)
See page 10. Part 4 of 4. *Repeated* 1:57 am 5/19 & 3:57 am 5/20.
- 10:00 The Paris Murders** (TV-14)
In My Son's Name. Season 2, episode 9 of 12. A serial killer dies in a car crash while carrying an abducted woman in the trunk.
- 11:00 Flesh and Blood on MASTERPIECE** (TV-14)
Part 3 of 4. As Vivien and Mark prepare for a trip to India, Jake gets a hot tip.

19 Monday

- 7:00 Antiques Roadshow** (TV-G)
Junk in the Trunk 14.
- 8:00 American Experience** (TV-PG) (DVS)
Mr. Polaroid. See page 11. *Repeated 3 am 5/21 & 3 pm 5/21.*
- 9:00 Independent Lens** (TV-14) (DVS)
Who Is Michael Jang? See page 2. *Repeated 1 am 5/20, 2 am 5/21 & 4 am 5/25.*
- 10:00 Photographic Justice: The Corky Lee Story** (TV-PG)
Photographer Corky Lee's art is his activism. This intimate portrait reveals the triumphs and tragedies of the man behind the lens. *Repeated 4 pm 5/21.*
- 11:00 Amanpour and Company**

20 Tuesday

- 7:00 Finding Your Roots** (TV-PG)
Larger Than Life. Henry Louis Gates Jr. introduces actors Lea Salonga and Amanda Seyfried to their ancestors. *Repeated 2 pm 5/21 & 4 am 5/22.*
- 8:00 Deadlock** (TV-PG)
Part 2 of 4. *Repeated 3 am 5/22.*
- 9:00 Frontline**
Hurricane Helene's Deadly Warning. *Repeated 1 am 5/21.*
- 10:00 Eagles of Mercy** (TV-PG)
In the opening moments of D-Day, two young American medics parachuted into France and soon found themselves trapped in a church. They end up providing first aid to the first casualties while a battle raged outside between American and German forces.
- 11:00 Amanpour and Company**

21 Wednesday

- 7:00 Nature** (TV-PG) (DVS)
Equus: Story of the Horse: Origins. Part 1 of 2. *Repeated 2 pm 5/22.*
- 8:00 NOVA** (TV-G) (DVS)
Decoding The Universe: Cosmos. See how mind-bending discoveries over the past 50 years have revolutionized our understanding of the universe. *Repeated 2 pm 5/23.*
- 9:00 Bugs That Rule the World** (TV-PG)
Eat or Be Eaten. Part 3 of 4. See page 11. *Repeated 1 am 5/22, 3 pm 5/22 & 1 am 5/25.*
- 10:00 Spy in the Ocean, A Nature Miniseries** (TV-G) (DVS)
Deep Relationships. Part 3 of 4. Spy creatures uncover surprising undersea relationships as sharks befriend fish, whales play with dolphins, and lobsters do the conga in seas where even spider crabs have friends. *Repeated 4 pm 5/22.*
- 11:00 Amanpour and Company**

22 Thursday

- 7:00 Mid American Gardener**
- 7:30 Ask This Old House** (TV-G)
Thank You, Roger Cook.
- 8:00 Father Brown**
The Hermit of Hazelnut Cottage. Season 11, episode 3 of 10. Brenda faces ghosts from her past and becomes embroiled in a local dispute that ends in murder. *Repeated 1 am 5/23, 7 pm 5/24 & 2 pm 5/26.*
- 9:00 Miss Fisher's Murder Mysteries** (TV-14)
Murder a la Mode. Season 2, episode 5 of 13. When Phryne arrives at Madame Fleuri's for a fitting, she unexpectedly finds herself amidst a crime scene. *Repeated 2 am 5/23 & 6 pm 5/25.*
- 10:00 The Good Karma Hospital**
Season 1, episode 2 of 6. See page 10. *Repeated 3 am 5/23.*
- 11:00 Amanpour and Company**

23 Friday

- 7:00 Washington Week with the Atlantic**
- 7:30 Firing Line with Margaret Hoover**
- 8:00 Great Performances** (TV-PG)
Girl from the North Country. This spiritually uplifting story is set in Duluth, Minnesota, in 1934, when a group of wanderers' lives intersect at a house full of music, life, and hope as it reimagines 20 legendary songs by Bob Dylan as they've never been heard before. *Repeated 1:30 am 5/24.*
- 10:30 Secrets of the Royal Palaces** (TV-PG)
Royal Scandals. *Repeated 4 pm 5/26.*
- 11:30 Amanpour and Company**

24 Saturday

- 7:00 Father Brown**
The Hermit of Hazelnut Cottage. See 8 pm 5/22.
- 8:00 Midsomer Murders** (TV-PG)
Tale of Two Hamlets, Parts 1 & 2 of 2. Season 6, episodes 7 & 8 of 10. A young film star dies at the opening of a "satanic experience" at his family's ancestral home
- 10:00 The Brokenwood Mysteries** (TV-14)
Blood Pink. Season 2, episode 4 of 4. Shepherd's favorite musician is found electrocuted in her bathtub the next morning after a show.
- 11:30 Austin City Limits** (TV-PG)
Adrian Quesada Boleros Psicodelicos.

25 Sunday

- 7:00 National Memorial Day Concert 2025** (TV-PG)
See page 2. *Repeated 8:30 pm 5/25, 12 am 5/26, 1:30 am 5/26 & 3 am 5/27.*
- 8:30 National Memorial Day Concert 2025** (TV-PG)
See 7 pm.
- 10:00 The Paris Murders** (TV-14)
Until The Break of Dawn. Season 2, episode 10 of 12. A woman is found running half-naked and covered in blood in the middle of the night. What happened at the abandoned castle's party she was fleeing?
- 11:00 Flesh and Blood on MASTERPIECE** (TV-14)
Part 4 of 4. Four romantic relationships spiral out of control. Mary responds to an emergency.

26 Monday

- 7:00 Antiques Roadshow** (TV-G)
Charleston, Hour 2.
- 8:00 Antiques Roadshow** (TV-G)
Charleston, Hour 3.
- 9:00 Miles, Morale and Memories: Bob Hope and World War II** (TV-PG)
See page 2. Repeated 3 pm 5/27.
- 10:00 Independent Lens** (TV-14) (DVS)
Make Peace Or Die: Honor the Fallen. A Marine veteran carves and delivers battlefield crosses to each of the families of the fallen from his unit. Repeated 1:30 am 5/27 & 2 am 5/28.
- 11:30 Amanpour and Company**

27 Tuesday

- 7:00 Finding Your Roots** (TV-14)
Stranger Than Fiction. Henry Louis Gates Jr. explores the family trees of writers: novelist Amy Tan and poet Rita Dove. Repeated 2 pm 5/28, 4 am 5/29 & 4 am 5/31.
- 8:00 Aging In America: Survive or Thrive** (TV-14)
Narrated by Martin Sheen, this documentary explores the challenges and opportunities of a rapidly aging population with renowned experts and personal stories. Repeated 1 am 5/28 & 4 pm 5/28.
- 9:00 Defying Death on the Atlantic** (TV-PG)
A team of four Air Force veterans compete in an extreme rowing race while raising funds and awareness for vets with mental illness.
- 10:00 Epic Bill** (TV-PG)
A bankrupt self-made millionaire encounters a race he can't win.
- 11:00 Amanpour and Company**

28 Wednesday

- 7:00 Nature** (TV-PG) (DVS)
Equus: Story of the Horse: Chasing The Wind. Part 2 of 2. Repeated 2 pm 5/29.
- 8:00 NOVA** (TV-G) (DVS)
Decoding The Universe: Quantum. Repeated 2 pm 5/30.
- 9:00 Bugs That Rule the World** (TV-PG)
Beetle Mania. Part 4 of 4. See page 11. Repeated 1 am 5/29 & 3 pm 5/29.
- 10:00 Spy in the Ocean, A Nature Miniseries** (TV-PG) (DVS)
Deep Trouble. Part 4 of 4. Repeated 4 pm 5/29.
- 11:00 Amanpour and Company**

29 Thursday

- 7:00 Mid American Gardener**
- 7:30 Ask This Old House** (TV-G)
Mudroom Cubbies.
- 8:00 Father Brown**
The Last Supper. Season 11, episode 4 of 10. A food fayre comes to Kembleford. Repeated 1 am 5/30.
- 9:00 Miss Fisher's Murder Mysteries** (TV-14)
Marked for Murder. Season 2, episode 6 of 13. Phryne investigates a missing cap and discovers a murder. Repeated 2 am 5/30.
- 10:00 The Good Karma Hospital**
Season 1, episode 3 of 6. See page 10. Repeated 3 am 5/30.
- 11:00 Amanpour and Company**

30 Friday

- 7:00 Washington Week with the Atlantic**
- 7:30 Firing Line with Margaret Hoover**
- 8:00 Great Performances** (TV-PG)
Kiss Me, Kate. See page 10. Repeated 1:30 am 5/31.
- 11:00 Secrets of the Royal Palaces** (TV-PG)
Royal Duty. Includes the controversy around Russian spy Anthony Blunt's long stay at the Palace in the 1980s.

Join us for special
programming all day on
Saturday, May 31



- 11:00 Mid American Gardener**
- 11:30 Easy Yoga: The Secret to Strength and Balance with Peggy Cappy**
Discover how yoga can help anyone, regardless of age, increase strength and mobility.
- 12:30 America's Test Kitchen Celebrates 25 Years**
Hosts Bridget Lancaster and Julia Collin Davison and the test cooks highlight the food, science, kitchen ingenuity, and fun that have made the show a fan favorite for over 600 episodes. Also go behind-the-scenes to see how it all gets made.
- 2:00 Cooking with Legends: Lidia Bastianich & Jacques Pepin**
These legendary chefs (and longtime friends) pair up for a lively program that showcases each chef's remarkable ability to teach from their lifetimes of experience on air, and, in the kitchen.
- 3:30 Rick Steves Experiencing Europe**
Lessons from a lifetime of European travel help viewers learn from Steves' experiences and travel with minimal hiccups.
- 5:00 PBS News Weekend**
- 5:30 Classical Rewind (My Music)**
From the romantic mood of Beethoven's "Moonlight Sonata" to the dramatic emotions of Orff's "O Fortuna," this special visits the greatest compositions and composers of all time.
- 7:00 '60s and '70s Soul Celebration (My Music Presents)** (TV-G)
The legends of 1960s and '70s soul music return to perform their biggest hits.
- 10:00 Bruce Springsteen & The E Street Band — No Nukes** (TV-PG)
The Legendary 1979 MUSE benefit concert recorded at New York's Madison Square Garden.

'Little Women' now streaming on Passport

Little Women on MASTERPIECE is a captivating adaptation of Louisa May Alcott's beloved novel. Set during the Civil War, the three-part miniseries follows the lives of the four March sisters — Meg, Jo, Beth, and Amy — as they grow from girls into young women. With warmth, humor, and heartache, the series explores themes of family, love, ambition, and resilience. Jo's fierce independence, Meg's traditional dreams, Beth's quiet strength, and Amy's artistic passion create a rich, emotional journey. The stellar cast, lush period details, and faithful storytelling bring new depth to this classic tale. **Little Women on MASTERPIECE** is available for members to stream with WILL Passport through May 19.



If you'd like to learn about the visionary author behind this American classic, then be sure to stream **Louisa May Alcott: The Woman Behind 'Little Women'** from **American Masters**, which is available to stream anytime with WILL Passport. The documentary offers a compelling look at the life and legacy of the groundbreaking author, exploring Alcott's journey from poverty to literary fame and revealing the complexities behind her iconic work. Through dramatic reenactments, expert interviews, and archival materials, viewers gain insight into Alcott's progressive views on women's rights, her struggles with societal expectations, and her personal sacrifices. Narrated with depth and nuance, the film uncovers the real woman who defied convention and created one of the most enduring novels in American literature.

« COMING AND GOING THIS MONTH TO »

WILL Passport



MAY HIGHLIGHTS

My Music with Rhiannon Giddens

- Roisin Elsafty, 5/1

Aging in America: Survive or Thrive, 5/1

Great Performances

- Now Hear This: Barrios: Chopin of the Guitar, 5/2

Independent Lens

- Bike Vessel, 5/25
- The In Between, 5/11
- The Strike, 5/4

Miss Austen on MASTERPIECE, 5/4

NOVA

- Critical Condition: Health in Black America, 5/29

Walter Presents (with English subtitles)

- Cold Summer, season 1, 5/2 (Italian)
- The Intern, season 3, 5/23 (French)
- The Legacy, season 2, 5/23 (Danish)
- Pale Mountains, season 1, 5/9 (Italian)

LEAVING SOON

America ReFramed

- Curtain Up!, 5/11

American Experience

- Plague at the Golden Gate, 5/24

If Everyone Knew, 5/2

Little Women on MASTERPIECE, 5/20

Nature

- Salmon: Running the Gauntlet, 5/1
- Bears of the Last Frontier: City of Bears, 5/8
- Bears of the Last Frontier: The Road North, 5/8
- Bears of the last Frontier: Arctic Wanderers, 5/8

Tulsa: The Fire and the Forgotten, 5/31

We are Family: Songs of Hope and Unity, 5/14

Go to will.illinois.edu/passport, your TV's app menu, or your preferred streaming device, and find out how you can unlock more shows with your WILL Passport via the PBS App.



Interns provide services, gain experience

We are proud to offer a range of opportunities to students from the University of Illinois and the wider community to challenge themselves and grow professionally. Year after year, students play a vital role at Illinois Public Media, from reporting the news to producing segments for our ongoing programs to helping on-air elements flow smoothly on our WILL stations.

Grace Merki received the Donald P. Mullally Internship Scholarship for 2024-2025 and assisted our broadcast operations team in the day-to-day operations of WILL Radio.



Merki edited daily on-air promotional messages across AM and FM platforms and helped bring community voices from the studio to Illinois Soul's airwaves.

She has also worked with members of our traffic team to enable automation of music on Illinois Soul.

"I was particularly grateful for the Donald P. Mullally Internship Scholarship, as I am eager to gain more hands-on experience in sound design. As a theatre major, I was excited to explore all aspects of sound," Merki said. "My passion for sound design began in high school, and I knew then that I wanted to build a career in this field. Whether in theatre, radio, concerts, or film, I am committed to deepening my understanding of sound and broadcasting."

Merki is a first year in the College of Fine and Applied Arts (BFA) in theatre, with a concentration in sound design and technology at the University of Illinois.

Stephanie Mosqueda received the Robert O. Endres Endowed Internship for 2024-2025 and served as the producer for our daily morning podcast, **217 Today**. Prior to her stepping into this internship role, Mosqueda was a reporter for the Illinois Student Newsroom at Illinois Public Media, covering stories that spotlighted minority communities in Champaign-Urbana — such as the Immigration Welcome Awards and local food pantries.



In her time as a Robert O. Endres Endowed Intern, she also worked as a digital producer for **The 21st Show** and reported for IPM News.

"These roles have provided invaluable insights into live show production and the diverse opportunities within journalism," Mosqueda said. "They have helped me immerse myself in the community and connect with the people around me. These experiences have sharpened my skills in sourcing and storytelling, and I appreciated the opportunity to serve in that capacity."

Mosqueda is a senior in journalism in the College of Media.

Brandt Fellows contribute to IPM mission

Since 2022, the College of Media has provided undergraduate students with real-world experiences with the Mark L. Brandt Public Engagement Fellows program for undergraduates. An estate gift from the U. of I. alumnus provides up to 40 internships each year to Media students who work on a variety of college and department initiatives.

Mary Piacente is a junior in journalism in the College of Media and joined IPM News as a student reporter with a focus on politics. Piacente produced stories heard on WILL Radio and seen on ipmnewsroom.org, and covered protests and rallies across the listening area, including in Champaign-Urbana



and Mahomet. She also assisted with local election coverage for locations such as Savoy and Rantoul.

"IPM News has given me invaluable experience reporting in the field and deepening my knowledge of local politics," Piacente said. "Everyone has been so helpful and accommodating, and I can't wait to see what else I will do."

See **BRANDT FELLOWS** on page 20



Students create short docs for ‘Prairie Fire’

Alison Davis, lecturer of journalism in the College of Media at Illinois, is no stranger to **Prairie Fire**. In fact, she started out on the original show, which aired from 1992 to 2008, first as a production assistant then later as the show's producer and host. With eight regional Emmy Awards, she is now guiding the next generation of filmmakers.

With the relaunch of the program in 2023 and Davis' new role teaching, a collaboration seemed inevitable. Davis has been working with the **Prairie Fire** team to take her students' work from the classroom to broadcast television, ultimately making it available to a larger audience while also giving budding filmmakers real-world experience.

"We thought it would be a great way to be able to teach young filmmakers about our process and how documentaries are made, from the idea stage to execution to the final product," said DJ Roach, video production manager at Illinois Public Media. "We also thought it would be a great way for Illinois Public Media and the College of Media to collaborate on a project that gives students an outlet to showcase their talents."

This spring semester, the project is underway in Davis' "Advanced Documentary Production" journalism course. Initially, the class was tasked with learning more about **Prairie Fire** by meeting with its producers and watching several episodes. Later each student put together a presentation to pitch their story idea to the **Prairie Fire** team.

"Each student worked really hard on their pitches, and I loved that some of the ideas were totally new to DJ, Sarah (Edwards), and Taylor (Plantan)," Davis said. "The producers selected the top four stories and then the students self-selected into groups to work on each story."

The stories that were chosen by the **Prairie Fire** team: **The Idea Store**, a unique business in Champaign; **The Station Theatre**, a local theater group as they get ready for a show; **K-pop dance**, a community created over a love of dance; and **A profile** of Toni Gist, a clinical

assistant professor of food science and human nutrition in the College of Agricultural, Consumer, and Environmental Sciences, who is known as the "food professor."

"I was impressed with not only the quality of the ideas the students proposed, but how well thought out they were and how serious they took it," Roach said. "They really seemed interested in wanting to tell stories and were engaged in the process."

After the selection process, the teams of students researched the subjects, conducted pre-interviews, and scouted for locations. Teams handled all the field production including getting all needed equipment, organizing transportation, and communicating with the subject.

"DJ provided a hands-on workshop on producing and lighting interviews, which gave my students a chance to practice with some of IPM's equipment and learn new techniques. IPM has been amazing in sharing some valuable audio and video equipment and additional videography assistance," Davis said.

The **Prairie Fire** team will review final submissions from the students with the hopes of airing some, if not all, of the segments in May's edition of the program, which airs at 7:30 pm Thursday, May 15. Davis will join host Sarah Edwards during the program to discuss the students' work and take a look behind the scenes at the process and how each segment came together.





Join us on an exclusive Scottish tour this fall

Taking place this fall from Sept. 17–25, our latest Friends of WILL tour combines culture and history as we travel through the breathtaking scenery of Scotland. From castles to whisky to witch trials, this excursion is filled with special features and amazing experiences that make our station tours so unique. Director of



Development John Steinbacher will join the journey along with a local guide who will offer special details and insight about Scotland's most famous and beautiful features. Highlights of the trip include visits to St. Andrews, Inverness, Dunrobin Castle & Gardens, Loch Ness, Fort William, a distillery tour, the National Museum of Scotland, Abbotsford House, the Falkirk Wheel, Archerfield Walled Garden, and Edinburgh Castle. For more details, a full itinerary, and pricing information, contact Steinbacher at 217-300-5742 or stnbchr@illinois.edu.



BRANDT FELLOWS from page 18



Lily Cohen is a senior in advertising in the College of Media and joined the Development Department at Illinois Public Media to enhance our fundraising and member recruitment efforts within the realm of

social media. Cohen researched other public media organizations' efforts, assessed their successes, and provided recommendations, suggestions, and best practices adapted to fit IPM's unique use case. She also created a suite of sample social media content based on predictors of success identified throughout the project.

"I have had an incredible experience at IPM, especially because of the wonderful people who work here. Working with Nicky to research and strategize how to better IPM's fundraising on social media has been a great learning experience," Cohen said.

Sydney Gardner is a junior in the College of Liberal Arts and Sciences with a minor in advertising in the College of Media. She joined the IPM Marketing Department to help create social media content promoting Illinois Soul's public engagement efforts. Gardner has made videos showcasing events such as HER Story II at Gallery Art Bar in Urbana, celebrating blues legend Candy Foster prior to a documentary on Foster airing on WILL-TV, and illustrating the importance of **News, Brews & Beatz** that hosts events to facilitate community conversations.



"Working as an intern for Illinois Soul has given me so much inspiration to use for my creative work. I knew how meaningful the station was to the community, but seeing first-hand the positive response Illinois Soul receives from the community has been truly moving," Gardner said.

Thank you, Program Underwriters!

Private support accounts for the largest single source of funds necessary to make Illinois Public Media and the WILL stations great resources for communities across central Illinois.

We appreciate the following organizations that have stepped forward to join the individuals and families who support award-winning public media services.

7 Senses	Danville Symphony Orchestra	Neil Street Blues
AARP	Delta Dental	New Prairie Solar
Abraham Lincoln Public Library and Museum	Experience Champaign-Urbana	Office of the Vice Chancellor for Diversity, Equity, and Inclusion
Abyss Wares	Forage Kitchen	Office of the Vice Chancellor for Research and Innovation
Allerton Park and Retreat Center	Furniture Warehouse	OSF Healthcare
Amara Yoga & Arts	The Gallery Art Bar	Osher Lifelong Learning Institute
Ameren Illinois	The Gillette Group – Keller Williams	Pour Bros. Craft Taproom Champaign
Art Mart	The Glenwood of Mahomet	The Prairie Enthusiasts
Baldarotta Sandwiches & Gelateria	Health Alliance	Prairie Rivers Network
Baroque Artists of Champaign-Urbana	Health in Harmony Wellness Center	Pygmalion
Beard Culture Barbershop & Gallery	Housing Authority of Champaign County	Record Swap
The BEAT	Humanities Research Institute	Rental City
Beckman Institute for Advanced Science and Technology	The Idea Store	The Salt Shed
Beringer Realty	Illini Mattress	Sinfonia da Camera
The Best of Africa Food Store	Illinois Arts Council	Smith Photography
Birch Tree Counseling	Illinois Division of Rehabilitation Services	Spurlock Museum of World Cultures
Bruce D. Nesbitt African American Cultural Center, University of Illinois	Illinois Secretary of State	State Farm Center
Busey	Illinois State Board of Education	Strictly Wicks Candle Company
Campus Middle School for Girls	Illinois Symphony Orchestra	Sweeney Brothers Fine Flooring
Casablanca Bazar	Innovation Arts and Entertainment	Symphony Orchestra Guild of Decatur
Center for Advanced Study	International Galleries	Ten Thousand Villages
Central State Marketing	JAC Local 149 Plumbers, Pipefitters & Service Technicians	Thomas-Mamer, LLP
Champaign County Christian Health Center	Jay Goldberg Events	TrophyTime
Champaign Urbana Public Health District	Juneteenth Inc. Springfield	TUNE CHI
Champaign-Urbana Spinners and Weavers Guild	Krannert Art Museum	University of Illinois Physics
Champaign-Urbana Symphony	Krannert Center for the Performing Arts	University of Illinois Student Affairs
Christie Clinic	Kreative Vision Photography	University YMCA
City of Urbana Arts and Culture	The Land Connection	Urbana 116 Family Engagement Committee
City of Urbana — Market @ The Square	Landscape Recycling Center	Urbana Acupuncture
Cloud Mountain Kombucha	Leek and Sons Funeral Home & Cemetery	Urbana Arts & Culture Program
Common Ground Food Co-op	The Literary	Urbana Family Engagement
Community Foundation	Live Nation	Urbana Park District
Community Shares of Illinois	Mama's African Kitchen Restaurant	Urbana Parks Foundation
College of Fine & Applied Arts	Mammoth, Inc.	Virginia Theatre
C-U BIPOC Artist Collective	MedServ Equipment Corp	Visit Pensacola
C-U MTD	Midwest Renewable Energy Association	Western Illinois University
CU Schools Foundation	NAACP of Champaign County	WETA
CVH Entertainment	Natural Gourmet	Winding Ivy Community Development Foundation
		Yoga Institute of Champaign-Urbana

36% of the PBS audience is more likely to research a company, product, or service that sponsors programs.

Join this illustrious group of business owners who benefit from reaching an influential audience by underwriting quality and award-winning programs such as: **Finding Your Roots, Prairie Fire, and Mid American Gardener.**

Contact our development department at 217-300-3019 for details.

Friends of will
Campbell Hall
300 North Goodwin Avenue
Urbana, IL 61801-2316

MOVING? Let your public broadcasting membership move with you.
Fill out the form below and send it with your address to:

Friends of WILL, 300 North Goodwin Avenue, Urbana, IL 61801-2316

- ☐ Check here if you wish to remove your name from our membership list.
- ☐ Please update my membership with this new address:

Name: _____

Street: _____

City: _____ State: _____ Zip: _____

Phone: () _____ Email: _____

Go to **will.illinois.edu/optout** to go green & receive Patterns digitally.

NONPROFIT
ORGANIZATION
U.S. POSTAGE PAID
CHAMPAIGN, IL
PERMIT NO. 453

