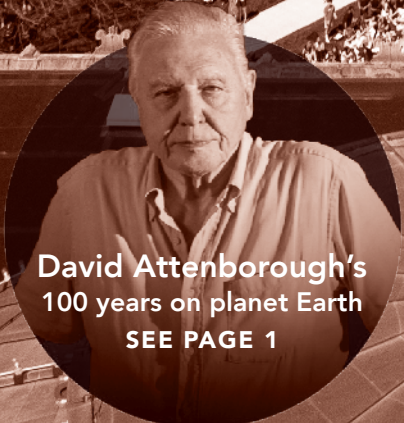


npr PBS

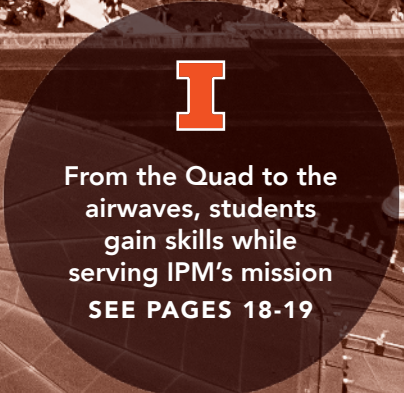
# Patterns

MAY 2026

Friends of WILL Membership Magazine



David Attenborough's  
100 years on planet Earth  
SEE PAGE 1



From the Quad to the  
airwaves, students  
gain skills while  
serving IPM's mission  
SEE PAGES 18-19

Membership Hotline: 800-898-1065  
General inquiries: 217-333-7300  
Campbell Hall  
300 N. Goodwin Ave., Urbana, IL 61801-2316

### Mailing List Exchange

Donor records are proprietary and confidential. IPM does not sell, rent, or trade its donor lists.

### Patterns

*Friends of WILL Membership Magazine*  
Editor & Designer: Doris Dahl  
Art Director: Kurt Bielema

### RADIO

#### 90.9 FM

Illinois Classical is a mix of classical and other music and NPR information programs, including local news. Also with live streaming on [will.illinois.edu](http://will.illinois.edu). See pages 4-5.

#### 101.1 FM

Illinois Soul is a mix of Black-hosted NPR and local news programs, smooth jazz, neo soul, R&B, and throwback jams. 101.1 FM is available in the Champaign-Urbana area. It is also heard on 90.9 FM HD2 with live streaming on [illinoisoul.org](http://illinoisoul.org). See pages 6-7.

#### 580 AM

News and information, NPR, BBC, agriculture, talk shows. Also heard on 90.9 FM HD3 with live streaming on [will.illinois.edu](http://will.illinois.edu). See page 8.

### TELEVISION

#### WILL-HD


All your favorite PBS and local programs, in high definition when available. 12.1: Contact your cable or satellite provider for channel information. Also live streaming at [will.illinois.edu](http://will.illinois.edu). See pages 9-16.

#### WILL Kids 24/7


Around the clock, award-winning children's programming. 12.2: also available on Comcast and Mediacom. Stream at [will.illinois.edu](http://will.illinois.edu).

#### WILL Create

Cooking, travel, home improvement, arts and crafts, and gardening. 12.3: also on Comcast and Mediacom. Stream at [video.will.illinois.edu/livestream/](http://video.will.illinois.edu/livestream/).

 [will.illinois.edu](http://will.illinois.edu)

 @ILPublicMedia

 @ILPublicMedia

 @ILPublicMedia

 @ILPublicMedia

### Powering your inbox!

Browse our e-newsletters and sign up to receive behind-the-scenes information in your email inbox that is targeted to your interests. Whether it's news, classical music, or general information about our stations — we have you covered.

[will.illinois.edu/signup](http://will.illinois.edu/signup)



Printed with soy ink on recycled, recyclable paper. Printed by Premier Print Group.

# Patterns

May 2026, Vol. LI, No. 11



May brings a natural moment of transition across central Illinois. The academic year winds down, seasons shift, and there's a sense of both reflection and forward movement. At Illinois Public Media, we're feeling that as well.

This time of year also puts a spotlight on one of the most important parts of our work — our students. Across the newsroom, our studios, and our programming, students from the College of Media and across the University of Illinois are contributing in real, professional ways. You'll see that in this month's student edition of **Prairie Fire**, across our Illinois Student Newsroom, and in the work students are doing across departments to help extend our reach into the community. See pages 19–20 for more about student contributions here at IPM.

At the same time, we're continuing to do the work behind the scenes — aligning resources, strengthening how we operate, and supporting the journalism and programming you rely on. Much of that work isn't always visible, but it matters. It helps keep our service steady, supports the next generation of journalists and creators, and allows us to keep adapting in a continuously evolving media landscape.

This month's *Patterns* reflects that work in action. It's all part of the work already underway as we continue building what comes next.

Thank you for being part of it.

Lillie Duncanson, director of broadcast operations and content



Photo: Gareth Whyre, © BBC Studios

## HONORING THE LEGACY OF DAVID ATTENBOROUGH

Sir David Attenborough with the restored Pliosaur skull in the workshop of the Etches Collection Museum of Jurassic Marine Life in Kimmeridge, Dorset, UK.

# Behind the scenes of the groundbreaking wildlife series that changed television



Photo: Anuschka Schofield

Sir David Attenborough, 2024.

Fifty years after production began, and in celebration of Attenborough's 100th birthday on May 8, **Life on Earth: Attenborough's Greatest Adventure** offers rare, behind-the-scenes insight into the making of the groundbreaking series. Featuring exclusive interviews with Attenborough and his original crew, the special captures the triumphs and setbacks of filming the series during a pivotal era in television history, when jet travel and color filming were relatively new. **Life on Earth: Attenborough's Greatest Adventure** premieres at 7 pm Wednesday, May 6.

**Life on Earth** was the first series to combine cutting-edge camera technology and techniques. Time-lapse, microphotography, and filming speeds of up to 10,000 frames per second were used to capture animal movement in ways never before seen — from striking rattlesnakes to leaping lemurs and hovering hummingbirds. The new documentary details how the team captured some of the series' most astounding moments — a lioness ferociously taking down a wildebeest, the rare moment a male Darwin's frog "gives birth" by mouth, and Attenborough's unforgettable encounter with mountain gorillas in Rwanda, often voted one of the greatest television moments of all time.

Upon its broadcast on PBS in 1982, **Life on Earth** quickly became a global phenomenon, commanding the attention of over 500 million people in more than 100 territories. Its extraordinary success launched five decades of ambitious wildlife storytelling and cemented Attenborough's legacy as the most successful and influential wildlife filmmaker of our time.

Other Attenborough documentaries airing this month: **Nature: Attenborough and the Sea Dragon** (7 pm Wednesday, May 13); **Nature: Attenborough's Wonder of Song** (7 pm Wednesday, May 20); **Nature: Attenborough and the Jurassic Sea Monster** (7 pm Wednesday, May 27); **NOVA: Great Mammoth Mystery** (8 pm Wednesday, May 27), plus **The Green Planet** continues this month Wednesdays at 10 pm.

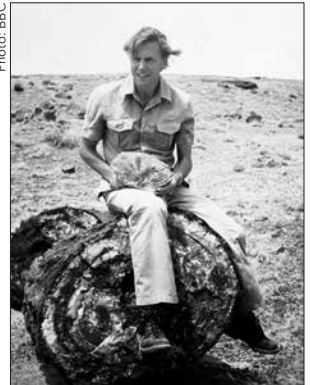


Photo: BBC

David Attenborough during filming for the 1979 'Life on Earth' series.



## Concert honors our servicemen and women

The **National Memorial Day Concert 2026** honors our country's veterans, servicemen and women, and military families. Scheduled for 7 pm Sunday, May 24 (and rebroadcast again at 8:30 pm the same evening), the concert unites the country in remembrance and appreciation of those who gave their lives for our nation and also serves those who are grieving. Now in its 37th year, this award-winning television event features uplifting musical performances, documentary footage, and dramatic readings. The special has become an American tradition and is one of PBS' highest-rated programs. On the broadcast, celebrities share real-life stories spanning the broad history of our nation's military conflicts, award-winning musicians perform songs in tribute to our country's true heroes, and the finest performers from the United States premier military choirs and ensembles are featured.

## The heroism of World War II paratroopers

Narrated by actor Paul Giamatti, **Waal River Crossing: 1944** is an hourlong documentary that reveals the story behind one of World War II's most heroic missions. The paratroopers of the 82nd Airborne Division were given a suicide mission: to cross one of Europe's largest and fastest-flowing rivers in broad daylight under the watchful eye of their German adversaries. They were outmanned and outgunned, but somehow the American paratroopers were able to complete their mission and wrestle two bridges away from German troops in Holland. **Waal River Crossing: 1944**, airing at 8 pm Thursday, May 21, tells the story of the mission in intimate detail through archival footage and interviews that celebrate the incredible bravery displayed by the soldiers involved.



## It's all about the 'Wow'!

A new puppet special for preschoolers celebrates the emotion of awe

This month, the Jim Henson Company debuts a new live-action preschool special starring new puppet characters who celebrate the power of awe. **Wowsabout** premieres at 9:30 am Friday, May 1, with encore presentations throughout the month. The special is about the unlikely friendship of Ronald, a fastidious little pig, and Roxy, a musical hedgehog, as they explore the "wows" of one of America's most extraordinary places: Sequoia National Park. Shot on location in the breathtaking park, the special aims to help children recognize and name the feeling of awe by experiencing moments of wonder alongside Roxy and Ronald. Through nature, music, storytelling, and friendship, children learn how awe sparks curiosity, creativity, kindness, and a desire to explore and care for the world around them.



## ASIAN AMERICAN PACIFIC ISLANDER HERITAGE MONTH

## One family's multigenerational trauma

A Chinese family's multigenerational trauma unfolds across time, place, and identity. Turning the camera inward, filmmaker Vicky Du traces her family's mental illness back to the Chinese Communist Revolution of 1949. Using archival, first-person voiceover and intimate interviews with family members, Du pieces together her family's war-torn past across three generations and three countries: China, Taiwan, and the United States. What results is an honest, empathetic, and nuanced portrait of the costs of survival of a post-war, diaspora family. **Light of the Setting Sun** explores identity, gender roles, and whether or not healing can break the cycle for future generations. The film airs on **Independent Lens** at 9 pm Monday, May 18.



## A filmmaker honors his father's legacy



Generations of artists call Robert A. Nakamura the godfather of Asian American film. Tadashi Nakamura calls him Dad. As the filmmaking son of a filmmaking legend, Tad uses the lessons his dad taught him to decipher the legacy of an aging man who was a child survivor of the World War II incarceration of Japanese Americans, a successful photographer who gave it up to tell his own story, an activist at the dawn of a social movement — and a father whose struggles have won his son freedoms that eluded Japanese Americans of his generation. As Parkinson's

disease clouds his memory, Tad sets out to retrieve his story and in the process discovers his own. **Third Act** airs on **Independent Lens** at 9 pm Monday, May 25.

## The discovery of a lost kingdom in China

A mysterious ancient city lies hidden in the mountains of Sichuan — remnants of a kingdom consigned to oblivion for thousands of years — until the chance discovery of a jade artifact in 1986. More than 10,000 unusual items have been found at the site, including curiously shaped bronze heads and masks covered in gold foil. Experts believe the discovery may be as archaeologically important as the Terracotta Army of Xi'an. Could this be the capital of the ancient Shu kingdom? **Secrets of the Dead** reveals **China's Bronze Kingdom** at 9 pm Wednesday, May 27.



## WEEKDAYS

### 6 am

**NPR Morning Edition** with Leila Fadel, Steve Inskip, A Martínez, and Michel Martin

### 9 am

#### **Classic Mornings with Vic Di Geronimo**

Vic makes each morning a classic morning!

### Noon

#### **Performance Today**

### 2 pm

#### **Classical Music**

### 5 pm

**NPR All Things Considered** with Ailsa Chang, Scott Detrow, Mary Louise Kelly, and Juana Summers

### 6 pm

**The 21st Show** with Brian Mackey

### 7 pm Monday-Wednesday

#### **The Evening Concert**

Monday–Wednesday and Friday at 7 pm and 6 and 7 pm Sundays. Listings may change.

#### **Monday:**

##### **The New York Philharmonic This Week**

5/4 Mahler: Symphony No. 8  
Lorin Maazel, conductor  
New York Choral Artists  
The Dessoff Choirs  
Brooklyn Youth Chorus

5/11, 5/18, 5/25 To be announced

#### **Tuesday:**

##### **Chicago Symphony Orchestra Radio Broadcast**

5/5 Wagner: Prelude to Act I of Lohengrin  
Lowell Liebermann: Flute Concerto No. 2  
Mahler: Symphony No. 4 in G Major  
5/12 Rachmaninov: Piano Concerto No. 1 in F-sharp Minor  
Shostakovich: Symphony No. 11 in G Minor  
5/19 Beethoven: Overture to The Creatures of Prometheus  
Mozart: Sinfonia concertante in E-flat Major for Violin, Viola, and Orchestra  
Tchaikovsky (arr. Glazunov): Meditation from Souvenir d'un lieu cher, Op. 42  
5/26 Dvořák: Cello Concerto in B Minor  
Dvořák: Symphony No. 8 in G Major

#### **Wednesday:**

##### **WFMT Orchestra Series: San Francisco Symphony**

5/6 Ravel: Piano Concerto in G Minor  
Fauré: Requiem  
5/13 Schubert: Symphony No. 5 in B-flat Major  
Brahms: Symphony No. 1 in C Minor  
5/20 Debussy: Gigue, Rondes de printemps, and Ibéria from Images pour orchestre  
Ravel: Piano Concerto for the Left Hand  
Einojuhani Rautavaara: Piano Concerto No. 1  
5/27 Tchaikovsky: Selections from Swan Lake:  
Act II: No. 10 Scene Moderato  
Act I: No. 2 Valse  
Act II: No. 13 Danse des cygnes: (IV) Allegro moderato – Pas d'action; (V) Andante  
Act IV: No. 29 Scène finale  
Tchaikovsky: Symphony No. 6 in B Minor

### 7 pm Thursday

**Prairie Performances** with Mel Miller

The best of classical and jazz music in central Illinois.

### 8 pm Thursday

#### **The Middle with Jeremy Hobson**

This nonpartisan live call-in talk show focuses on elevating the voices of the people in the middle of the country.

### 7 pm Friday

#### **Heifetz On Air**

5/1 Mozart: Violin Concerto No. 1 in B-flat Major:  
Allegro Moderato  
César Franck: Sonata for Violin and Piano in A Major: IV. Allegretto poco mosso  
5/8 Telemann: Viola Concerto in G Major, TWV 51:G9: I. Largo, and II. Allegro  
Paganini: Quartet for String Trio and Guitar No. 15 in A Minor: III. Recitativo: Andante sostenuto con sentimento: IV. Adagio Cantabile, and V. Rondo: Allegretto  
Tchaikovsky: Variations on a Rococo Theme  
5/15 Shostakovich: String Quartet No. 3 in F Major: I. Allegretto, II. Moderato con moto, and III. Allegro non troppo  
5/22 Astor Piazzolla: Oblivion  
Irene Britton Smith: Passacaglia  
Shostakovich: Concertino for Two Pianos  
Saint-Saëns: Danse Macabre, Op. 40  
5/29 Moritz Moszkowski: Suite for Two Violins, Op. 71: IV. Molto Vivace  
Niccolò Paganini: Caprice Nos. 4, 6, and 24  
Albert Lavignac: Galop-Marche  
Marin Marais: Suite of Old French Dances: V. La Basque  
Giovanni Bottesini: Gran' Duo Concertante

### 8 pm Friday

**Atomic Age Cocktail Party** with Jason Croft

5/1 **Great Arrangers: Billy May** (encore)  
Showingcase one of the coolest arrangers of the hi-fi era.  
5/8 **Phase 4 Stereo**  
Deep dive into the stereophonic series from London Records.  
5/15 **Sax Appeal** (encore)  
Wailing away with the big sounds of Atomic Age saxophone players.  
5/22 **Hawaiian Holiday**  
A musical trip to the islands.  
5/29 **Hi-Fi Hammond**  
Swinging tunes featuring the Hammond organ.

### 9 pm Friday

#### **Classical Music**

## SATURDAYS

### 7 am

#### **NPR Weekend Edition**

with Scott Simon

### 9 am

#### **Classics By Request**

Send requests to Vincent Trauth at [classreq@illinois.edu](mailto:classreq@illinois.edu) or leave a message at **217-265-5064**.

### 11 am

#### **Classics of the Phonograph**

John Frayne's weekly exploration of memorable recordings from the 20th century.

5/2 **Chamber Orchestras: Boyd Neel and Karl Munchinger**  
5/9 **Violinists: Erica Morini and Ginette Neveu**  
5/16 **Arturo Toscanini and Vladimir Horowitz play Tchaikovsky**  
5/23 **Mozart Music Used in the Film "Amadeus"**  
5/30 **The Brazilian Pianist Ghiomar Novaes**

**Noon****Afternoon at the Opera**

All performances are with the Met Opera Ensemble

- 5/2 **Eugene Onegin** (Tchaikovsky). Timur Zangiev, cond., with Iurii Samoilov (Onegin), Asmik Grigorian (Tatiana), Stanislav de Barbeyrac (Lenski), Maria Barakova (Olga), and Alexander Tsybalyuk (Gremmin).
- 5/9 **La Fille du Régiment** (Donizetti). Giocomo Sagripanti, cond., with Erin Morley (Marie), Lawrence Brownlee (Tonio), Susan Graham (Marquise of Berkenfield), and Peter Kálmán (Sulpice). *Performance of Oct. 31, 2025*
- 5/16 **Don Carlo** (Verdi). Fritz Stiedry, cond., with Jussi Björling (Don Carlo), Delia Rigal (Elizabeth), Cesare Siepi (Philip II), Fedora Barbieri, (Princess Eboli), Robert Merrill (Rodrigo), and Jerome Hines (Grand Inquisitor). *Performance from Nov. 11, 1950*
- 5/23 **Turandot** (Puccini). Oksana Lyniv, cond., with Anna Pirozzi (Turandot), Brian Jagde (Calaf), Angel Blue (Liu), and John Relyea (Timur).
- 5/30 **El Último Sueño de Frida y Diego** (Gabriela Lena Frank). Yannick Nézet-Séguin, cond., with Isabel Leonard (Frida), Carlos Alvarez (Diego), Gabriella Reyes (Catrina), Nils Wanderer (Leonardo).

**4 pm**

**Classical Guitar Alive!** with Tony Morris

**5 pm**

**Performance Today Weekend** with Valerie Kahler  
Classical music in concert from American Public Media studios and sites across the nation and around the world, as well as classical music news, interviews, and features.

**7 pm**

**The Midnight Special** with Marilyn Rea Beyer  
A lively potpourri of folk, Celtic and bluegrass, show and novelty tunes, and hilarious comedy routines.

**9 pm****Tiny Desk Radio**

with Bobby Carter and Anamaria Sayre  
Performances, interviews and behind-the-scenes stories made exclusively for public radio stations.

**NPR News Headlines** at 9:01.

**10 pm**

**Atomic Age Cocktail Party** (See 8 pm Friday)  
with Jason Croft

**11 pm**

**Atomic Age Double Shot** with Jason Croft

An episode from our archives.

- 5/2 **Big Band Hi Fi**  
5/9 **Strangers In The Night**  
5/16 **At The Movies**  
5/23 **Soft Sounds**  
5/30 **Musical Questions**

**Midnight**

**Classical Music**

Illinois  
**ARTS**  
Council

Programs on WILL Radio are partially sponsored by a grant from the Illinois Arts Council, a state agency.

**SUNDAYS****6 am**

**Classical Music**

**7 am**

**NPR Weekend Edition** with Ayesha Rascoe

**9 am**

**Sunday Baroque** with Suzanne Bona  
**NPR News Headlines** at 9:01 and 10:01

**1 pm**

**Pipedreams** with Michael Barone

**3 pm**

**Performance Today Weekend**

**5 pm**

**Reel Music** with Matt Rogers  
Music from the movies each week with an hour of orchestral themes from cinema's best film scores.

**6 pm**

**The Evening Concert**

**The Chamber Music Society of Lincoln Center**

- 5/3 Samuel Coleridge Taylor: Four African Dances for Violin and Piano  
Schumann: Quintet in E-flat Major for Piano, Two Violins, Viola, and Cello
- 5/10 Grieg: Sonata in A minor for Cello and Piano  
Béla Bartók: Quartet No. 2 for Strings
- 5/17 Schubert (arr. Kreisler): Ballet Music No. 2 for Violin and Piano from Rosamunde  
Schubert: Quartet in G major for Strings
- 5/24 Nikolai Myaskovsky: String Quartet No. 13 in A Minor
- 5/31 Mozart: Trio in C major for Piano, Violin, and Cello, K. 548  
Schumann: Trio No. 1 in D Minor for Piano, Violin, and Cello

**7 pm**

**Fiesta! with Elbio Barilari**

- 5/3 **Astor Piazzolla's Universal Appeal**  
Piazzolla's music performed by an amazing collection of international musicians.
- 5/10 **Transatlantic Music**  
Music by Latin American composers who had successful careers in Europe and from European composers that migrated to Latin America.
- 5/17 **Orchestra Music from Uruguay**  
Uruguayan orchestral music by Lamarque Pons, Fernando Condon, Sergio Cervetti, and José Serebrier.
- 5/24 **Symphonic Music of Carlos Chávez**  
We'll hear some of Chávez's best-known works as well as some hidden treasures.
- 5/31 **Teresa Carreño: Composer and Pianist**  
Carreño was one of the first Latin American women with an international career as a pianist, composer, and teacher.

**8 pm**

**Prairie Performances** (encore)

**9 pm**

**Jazz Night In America** with Christian McBride

**10 pm**

**Classical Music**

**NPR News Headlines** at 11:01

**Overnight**

**Classical Music**



**Share your love for Illinois Soul!**  
 Email us at [Illinois-Soul@illinois.edu](mailto:Illinois-Soul@illinois.edu)  
 or leave a voicemail at 217-244-1989.

Monday - Friday		Saturday	Sunday
Neo + SMJ	5:00	Neo + SMJ	Jazz Network
NPR Morning Edition with Kimberly Schofield	6:00	R&B/Throwbacks	NPR Weekend Edition
	7:00		
R&B Smooth Jazz Neo-Soul	8:00	Dialogue	The Cut (featuring gospel music)
	9:00		
Funk on Fridays Funk Ride (Fridays at 5 pm)	10:00	R&B/Throwbacks	R&B Dusties
	11:00		
	Noon		
	1:00		
	2:00		
	3:00		
	4:00		
Code Switch/Life Kit (M), Dialogue (Tu), Reveal (W), Throughline (Th), Funk Ride continues (F)	5:00	The Wind Down with Will Downing	Illinois Soul Gospel
	6:00		
The Quiet Storm	7:00	Catch the Flo	Soul of Jazz
	8:00		
	9:00	New Urban Jazz Lounge	Pillow Talk
	10:00		
Overnight: Neo + SMJ	11:00	Jazz Night in America	Overnight: Neo + SMJ
	midnight to 6 am	Overnight: Jazz Network	



[facebook.com/IllinoisSoul](https://facebook.com/IllinoisSoul)



[@illinoissoul](https://instagram.com/illinoissoul)



[@illinois\\_soul](https://twitter.com/illinois_soul)

Jill Clements, Illinois Soul Manager

## TOP 5 R&B Artists

Tying in to our on-air series, we feature the Top 5 R&B artists of community members, staff members, and VIPs.

**Dionne Clifton** is a senior lecturer in the Charles H. Sandage Department of Advertising in the College of Media at the University of Illinois Urbana-Champaign. A U. of I. alumna, she specializes in teaching courses related to business. Her Top 5:

1. Beyoncé
2. Toni Braxton
3. Brandy
4. Jodeci
5. D'Angelo





## Juneteenth communitywide concert features the sound of soul

Get ready to catch a whole groove as Illinois Soul partners with Krannert Center for the Performing Arts for the Juneteenth Communitywide Concert. The festivities begin at 5:30 pm Thursday, June 18 on Krannert Center's Stage 5.

This is more than a concert. It's a celebration of culture, freedom, and soul, bringing communities together through music that moves you. In past years, the stage has been ablaze with unforgettable performances from powerhouse vocalist Syleena Johnson and hip-hop icon Talib Kweli, drawing packed crowds and unmatched energy. Each year raises the bar, and this year will be no different.

So who's next to bless the stage? You don't want to miss this announcement. Stay locked to Illinois Soul for the official artist reveal ... coming soon!

## Illinois Soul announces the date of next year's anniversary celebration

Save the date and get ready for a whole experience when the Third Annual Illinois Soul Celebration hits the stage of Krannert Center's Tyron Festival Theatre at 7:30 pm Saturday, Feb. 6.



From the music to the love, the laughter to the fashion, this night will drip with beauty and swag. Expect full-on R&B flow, grown and sexy energy, and looks that turn heads while the music moves your soul. This isn't just a show — it's an epic celebration of style, sound, and soul you won't forget. Stay tuned to Illinois Soul for the official announcement dropping at 10 am Monday, May 11.



## Program spotlight: 'The Soul of Jazz'

Tune in for **The Soul of Jazz with Jamal Ahmad** on Illinois Soul Sunday's at 7 pm (or stream at [Illinoisoul.org](http://Illinoisoul.org)).

The show combines the best in classic and contemporary soul/jazz, international rhythms, dance music and other genre-bending styles. The eclectic mix has garnered fans from all over the world. Using jazz as the foundation, host Jamal Ahmad creates a sound that blurs the lines between style and category. Mixed with jazz, you'll hear touches of new urban sounds from Brazil, Africa, and the United Kindom. It's almost

impossible to listen to the show without hearing a new tune you'll want to add to your playlist.

Monday - Friday		Saturday	Sunday
NPR Morning Edition with Kimberly Schofield	5:00	The Middle (encore)	Thoroughline
	6:00	Commodity Week	Inside Europe
	6:30	State Week in Review	
	7:00	<b>NPR Weekend Edition</b>	<b>NPR Weekend Edition</b>
	8:00		
1A	9:00	The Splendid Table	It's Been a Minute/ Wild Card
	10:00	Wait Wait ... Don't Tell Me!	
The 21st Show with Brian Mackey	11:00	Weather Realness	Code Switch/Life Kit
Here & Now with Jason Croft	Noon	Statewide	Wait Wait ... Don't Tell Me! (repeat)
	The Middle (F repeat)	1:00	This American Life
The Closing Market Report   2:06 pm	2:00	Radiolab	Reveal
BBC Newshour	Commodity Week (F)	2:30	
Fresh Air with Terry Gross & Tonya Mosley	3:00	TED Radio Hour	On the Media
All Things Considered	4:00	<b>All Things Considered</b>	<b>All Things Considered</b>
	5:00	Hidden Brain	The New Yorker Radio Hour
	6:00	Left, Right & Center	Travel with Rick Steves
The 21st Show (repeat)	7:00	Ezra Klein	This Old House Radio
On the Media (M), Ezra Klein (Tu), Dialogue (W), The Middle (Th), Science Friday (F)	8:00	Latino USA	Weather Realness
The Daily/Today Explained	9:00	Dialogue	Tiny Desk Radio
On Point	10:00	Embodied	Sports in America
BBC World Service	11:00	Moth Radio Hour	Not By the Playbook
	Midnight	Sam Sanders Show	Le Show
	1 am to 5 am	<b>BBC World Service</b>	<b>BBC World Service</b>

**Bold Listing** = National/International News

Lillie Duncanson, Director of Broadcast Operations & Content



**AGRICULTURE** • [www.willag.org](http://www.willag.org)

Todd Gleason, host, **Closing Market Report** and **Commodity Week**:

**Opening Market Report**: 8:49 am; **Market Update**: 10:58 am; **Midday Market Report**: 12:58; **Closing Market Report**: 2:06. **Fridays: Commodity Week**: 2:30; **Grain Market Summary**: 4:32.

To listen to archived Ag reports, sign up for the Illinois Public Media Ag e-newsletter, or download our agricultural podcasts.



**IPM NEWS** • [IPMnewsroom.org](http://IPMnewsroom.org)

Reginald Hardwick, news and public affairs director, Illinois Public Media

The news from Illinois Public Media's award-winning staff of reporters, hosts, and producers can be heard during **Morning Edition**, **The 21st Show**, **Here & Now**, and **All Things Considered**:

Abigail Bottar, Jason Croft, Christine Hatfield, Emily Hays, Kulsoom Khan, Brian Mackey, Steve Morck, Stephanie Mosqueda, Kimberly Schofield, Tinisha Spain, Arjun Thakkar, and Jose Zepeda.

**Yale Climate Connections**: Monday-Friday at 5:34 and 9:30 pm

**WILL Call**: Wednesdays at 6:45 and 9:45 am and Thursdays at 5:44 pm on AM 580 and FM 90.9



**WEATHER**

Monday-Friday

Weather forecasts from meteorologist Andrew Pritchard throughout the day.

Monday - Friday		Saturday	Sunday
Newsline	5:00	Mister Rogers' Neighborhood	Mister Rogers' Neighborhood
Classical Stretch (M,W,F) Sit and Be Fit (T, Th)	5:30	Arthur	Arthur
Wild Kratts	6:00	Wild Kratts	Wild Kratts
Weather Hunters	6:30	Weather Hunters	Weather Hunters
Lyla in the Loop	7:00	Lyla in the Loop	Lyla in the Loop
Carl the Collector	7:30	Carl the Collector	Carl the Collector
Daniel Tiger's Neighborhood	8:00	Daniel Tiger's Neighborhood	Daniel Tiger's Neighborhood
Phoebe & Jay	8:30	Phoebe & Jay	Phoebe & Jay
Sesame Street	9:00	Sesame Street	Sesame Street
Work It Out Wombats! 5/1 Wowsabout premieres (See page 2)	9:30	Skillsville	Opportunity Knock\$ My Money Mentors (begins 5/10)
Donkey Hodie	10:00	MotorWeek	Consuelo Mack WealthTrack
Rosie's Rules	10:30	Garden SMART 5/23 Prairie Fire 5/30 Celebrating America 250	To the Contrary with Bonnie Erbe
Elinor Wonders Why	11:00	Mid American Gardener	American Muslims: A History Revealed (See page 11) 5/24 Prairie Fire
Alma's Way	11:30	The Life of Loi: Mediterranean Secrets	Market to Market
Molly of Denali	Noon	America's Test Kitchen	<b>May 3</b> Noon Our Vanishing Americana: Florida 1:00 World on Fire on MASTERPIECE
Xavier Riddle and the Secret Museum	12:30	Cook's Country	<b>May 10</b> Noon Grandma Stand 1:00 World on Fire on MASTERPIECE
Arthur	1:00	Christopher Kimball's Milk Street Television	<b>May 17</b> Noon Gene Hackman: Star of the Silver Screen 1:00 World on Fire on MASTERPIECE
Odd Squad	1:30	Kitchen Curious with Vivian Howard	4:00 Trolley Park: Great Lakes 4:30 This Moment In America: Artists in the Heartland
<b>M</b> Miss Fisher's Murder Mysteries <b>Tu</b> Antiques Roadshow <b>W</b> Finding Your Roots <b>Th</b> Nature 5/7 Life on Earth: Attenborough's Greatest Adventure (See page 1) <b>F</b> NOVA	2:00	Weekends with Yankee	<b>May 24</b> Noon Miles, Morale, and Memories: Bob Hope and World War II 1:00 Dad's Secret War: France 1944 2:00 Waal River Crossing: 1944 (See page 2) 3:00 The Eyes of the World: From D-Day to VE Day
<b>M</b> Sister Boniface Mysteries <b>Tu</b> Celebrity Antiques Road Trip <b>W</b> Asian Americans <b>Th</b> Nature: Dogs in the Wild 5/7 Life Unearthed (Waldman) (3:30) <b>F</b> 5/1 Space Explorers: Moonrise on ISS 5/8, 15, 22 Ancient Skies 5/29 Secrets of the Dead (See p. 3)	2:30	Lidia's Kitchen	<b>May 31</b> Noon Rick Steves Art of Europe: Beauty Through the Ages 12:30 Great Performances: Broadway Musicals: Jewish Legacy (p. 11) 2:30 The Count of Monte Cristo & 5:00
<b>M</b> Sister Boniface Mysteries <b>Tu</b> Celebrity Antiques Road Trip <b>W</b> Asian Americans <b>Th</b> Nature: Dogs in the Wild 5/7 Life Unearthed (Waldman) (3:30) <b>F</b> 5/1 Space Explorers: Moonrise on ISS 5/8, 15, 22 Ancient Skies 5/29 Secrets of the Dead (See p. 3)	3:00	Outside: Beyond The Lens	
	3:30	Samantha Brown's Places to Love 5/30 The Making of the American Revolution	
Antiques Roadshow 5/27 Asian Americans	4:00	This Old House	
	4:30	Ask This Old House	
DW News	5:00	Horizons from PBS News	Compass Points from PBS News
BBC World News America	5:30	Antiques Roadshow	Rick Steves' Europe
PBS News Hour	6:00		Miss Fisher's Murder Mysteries
	6:30	As Time Goes By	

During the fund drive, May 30-June 7, start and end times may vary.

Lillie Duncanson, Director of Broadcast Operations & Content



**WILL Kids 24/7 on 12.2**  
For the full WILL Kids 24/7 schedule, go to [www.illinois.edu/tv/schedule](http://www.illinois.edu/tv/schedule)



**Create 24/7 on 12.3**  
View the Create schedule, at [www.illinois.edu/tv/schedule](http://www.illinois.edu/tv/schedule)



## Season 4 of French crime thriller premieres

Astrid Nielsen works in the library of the judicial police, where she uses her incredible memory to analyze the files of ongoing investigations. With her partner, Inspector Raphaëlle Coste, they work to crack complex cases that remain unsolved while dealing with the communication barriers that may arise because Astrid is autistic. During season 4 of **Astrid**, airing Saturdays at 10 pm beginning May 2, Astrid investigates an infamous green diamond that is stolen, a supernatural killing, a serial killer that dies on an airplane, a prestigious chess tournament that turns deadly, and other difficult cases. From Walter Presents, **Astrid** is presented in French with English subtitles.

## Stories share insight into Native cultures

Follow along with emerging Native American storytellers as they share personal stories about their lives, experiences, and Tribal communities in **First Peoples, First Stories**. From learned Indigenous wisdom to reconnection with traditional knowledge, the series' visionary and innovative storytelling helps bring insight into Native culture. The program features four unique short films shared through two half-hour episodes, including "Buffalo Spirit," "Four Nights and a Fire," "liná," and "The Love for the Game." **First Peoples, First Stories** airs at 10:30 pm Monday May 18 and May 25.



## The global collaboration that resulted in 'We Are the World'



Forty years after the recording of "We Are the World," the pop anthem still resonates for music lovers worldwide, and the global concert Live Aid remains the benchmark for what's possible when musicians come together in a common cause. The documentary **Stand Together as One** explores what motivated this epic collaboration and highlights how artists, journalists, activists, filmmakers, and health care workers can work together to engage in the fight for equality, justice, and positive change. The program features interviews with artist-activist Harry Belafonte (shown at left), "We Are The World"

organizer Ken Kragen, composer and renowned entertainer Lionel Richie, singer Dionne Warwick, and the celebrated BBC correspondent Michael Buerk, among others. It also features a rare interview with Ethiopian Prime Minister Meles Zenawi, along with never-before-seen footage and still photos of the 1983 Ethiopian famine that were restored for this production. **Stand Together as One** airs at 10 pm Friday, May 1.

## The incredible legacy of W.E.B. Du Bois

**American Masters** premieres a documentary this month that examines the remarkable life of W.E.B. Du Bois. Born in 1868, William Edward Burghardt Du Bois was an American sociologist, writer, historian, and Pan-Africanist civil rights activist. Narrated by Viola Davis, the film follows his life chronologically, enriched by commentary from leading scholars, historians, artists, and biographers. **W.E.B. Du Bois: Rebel With A Cause** airs on **American Masters** at 8 pm Tuesday, May 19.



## Little known history of Muslims in America



**American Muslims: A History Revealed** is a series of six short documentary films that reveal and explore the early history of Muslims in America. Airing Sundays at 11 am beginning May 3, the series is hosted by three leading American Muslim journalists: Malika Bilal, Aymann Ismail, and Asma Khalid. Over the course of the series, they travel the country to piece together stories spanning over 200 years. (Note: **Prairie Fire** airs in this time slot on May 24.)

## Broadway's Best on 'Great Performances'

**Great Performances**, America's preeminent performing arts television series, returns Fridays at 8 pm to raise the curtain on its popular annual Broadway's Best lineup with two full-length musicals, a concert, and a documentary.

The lineup includes:

Featuring book, music and lyrics by Tony Award-winner Shaina Taub, **Suffs** (May 8) tells the story of the American suffragist movement and the remarkable friendships, heartbreak, and action that brought women together — 'or, in some cases, tore them apart.

Inspired by the iconic 1935 movie musical starring Fred Astaire and Ginger Rogers, **Irving Berlin's Top Hat** (May 15) is the acclaimed Chichester Festival Theatre revival recorded from the West End in January 2026. It is directed and choreographed by three-time Tony winner Kathleen Marshall. The musical features classics such as "Cheek to Cheek," "Let's Face the Music and Dance," and "Puttin' on the Ritz."

**An Evening with Nicole Scherzinger** (May 22) features Scherzinger performing at London's Royal Albert Hall for the first time in her first major UK solo show in 13 years. Accompanied by a full orchestra, Scherzinger sings a mix of beloved Broadway standards and pop hits from her career as lead singer of The Pussycat Dolls.

Narrated by Broadway legend Joel Grey, the documentary **Broadway Musicals: A Jewish Legacy** (May 29) explores the role of Jewish composers and lyricists in the creation of the modern American musical and showcases the work of some of the nation's preeminent creators of musical theater including Irving Berlin, Jerome Kern, George and Ira Gershwin, Lorenz Hart, Richard Rodgers, Oscar Hammerstein II, Kurt Weill, Sheldon Harnick, Jerry Bock, Leonard Bernstein, Stephen Sondheim, Stephen Schwartz, Jule Styne, and many others.



'Irving Berlin's Top Hat' will be featured on 'Great Performances' at 8 pm Friday, May 15.

## 1 Friday

- 7:00 Washington Week with the Atlantic**
- 7:30 Firing Line with Margaret Hoover**
- 8:00 Great Performances (TV-G)**  
*Now Hear This : The Iceland Sound.* Journey across Iceland with host Scott Yoo to uncover how volcanoes and tight-knit communities inspire artists like Anna Thorvaldsdottir and Daniel Bjarnason, revealing why this small nation produces extraordinary music.
- 9:00 Great Performances (TV-G)**  
*Now Hear This: The Composer Is Yoo.* Follow host Scott Yoo's journey to compose a piece of music for the first time. *Repeated 1 am 5/2 & 3 am 5/4.*
- 10:00 Stand Together As One (TV-PG)**  
See page 10.
- 11:00 Amanpour and Company**

## 2 Saturday

- 7:00 Sister Boniface Mysteries (TV-PG)**  
*Stage Fright.* Season 2, episode 9 of 10. Great Slaughter's Amateur Dramatic Society's upcoming production turns from drama to disaster once the leading actor is killed by the leading actress. *Repeated 3 pm 5/4.*
- 8:00 Midsomer Murders (TV-PG)**  
*Death and Dreams, Parts 1 & 2 of 2.* Season 6, episodes 3 & 4 of 10. Reunited with an old acquaintance in the guise of Dr. Jane Moore, Barnaby is called in to investigate an apparent suicide. Martin (the dead man) turns out to be a divorced gambler who was being treated for depression. Barnaby suspects murder.
- 10:00 Astrid (TV-14)**  
*Eye of the Dragon.* Season 4, episode 1 of 8. See page 10.
- 11:00 Austin City Limits (TV-PG)**  
*Pat Benatar & Neil Giraldo.*

## 3 Sunday

- 7:00 Call the Midwife (TV-14) (DVS)**  
Season 15, episode 7 of 8. Despite the closure notice, a new cohort of junior doctors joins the midwives. *Repeated 2 am 5/5.*
- 8:00 Miss Austen on MASTERPIECE (TV-PG) (DVS)**  
Part 1 of 4. Cassandra Austen arrives in Kintbury after hearing of her friend Eliza's husband's impending death. When visiting, she finds letters her sister Jane wrote to Eliza. *Repeated 12 am 5/4 & 3 am 5/5.*
- 9:00 The Count of Monte Cristo on MASTERPIECE (TV-14) (DVS)**  
*The Duel.* Episode 7 of 8. As Edmond's revenge continues, Fernad's misdeeds are made public. *Repeated 1 am 5/4 & 4 am 5/5.*
- 10:00 Seaside Hotel (TV-14)**  
*Resistance and Hope.* Season 10, episode 5 of 9. Amanda is pressured by the hotel's suppliers, and Weyse is confronted by the theatre.
- 11:00 Murder in the Mountains (TV-14)**  
*Dangerous Game.* Episode 5 of 13. A street golfer is set up to look as if he was killed in a hit-and-run.

## 4 Monday

- 7:00 Antiques Roadshow (TV-G)**  
*Grants Farm, Hour 2.*
- 8:00 The American Revolution (TV-14) (DVS)**  
*The Soul of All America.* Part 5 of 6. Concludes tomorrow. After Valley Forge and Monmouth, the French-American alliance changes the war and moves it to other theaters.
- 10:00 Unveiled: Daisy Bates and Johnny Cash (TV-PG)**  
This film follows the creation and installation of two statues from Arkansas of Daisy Bates and Johnny Cash in the U.S. Capitol's National Sanctuary Hall, exploring the profound impact of their lives on history, from their humble beginnings to their lasting influence. *Repeated 1 am 5/5.*
- 11:00 Amanpour and Company**

## 5 Tuesday

- 7:00 Finding Your Roots (TV-PG) (DVS)**  
*In the Blood.* Henry Louis Gates Jr. uncovers the surprising roots of two people who were raised by artists: actor Michael Douglas and writer/director Lena Dunham. *Repeated 2 pm 5/6 & 4 am 5/7.*
- 8:00 The American Revolution (TV-14) (DVS)**  
*The Most Sacred Thing.* Part 6 of 6. British General Cornwallis struggles to pacify the southern states. Supported by the French, Washington wins the decisive victory at Yorktown. With independence secured, Americans aspire for a more perfect union.
- 10:11 WW2: Women on the Frontline**  
*Behind Enemy Lines.* Part 1 of 3. Brave women across Europe risked everything to battle against Hitler's Nazi hordes behind enemy lines. *Repeated 1 am 5/6.*
- 11:00 Amanpour and Company**

## 6 Wednesday

- 7:00 Life on Earth: Attenborough's Greatest Adventure (TV-PG)**  
See page 1. *Repeated 2 pm 5/7.*
- 8:00 NOVA (TV-G) (DVS)**  
*Decoding The Universe: Cosmos.* How big is the universe? Will it ever end? Why is so much of it made of mysterious dark matter and energy? See how mind-bending discoveries over the past 50 years have revolutionized our understanding of the universe. *Repeated 2 pm 5/8.*
- 9:00 Shared Planet (TV-PG)**  
*Open Spaces.* Part 2 of 4. Despite the loss of 90% of the world's grasslands on some continents, a new wave of optimism is rising. From Kenya to Mexico, witness how people and wildlife are finding a harmonious balance in Earth's most vulnerable landscapes. *Repeated 1 am 5/7 & 1 am 5/10.*
- 10:00 The Green Planet (TV-PG) (DVS)**  
*Water Worlds.* Part 2 of 5. Sir David Attenborough discovers bizarre and beautiful water plants, which use nature's superglue, counting, and killer spikes to get a leaf up. Some escape from animals by rolling away while others create bubbles in a magical river in Brazil.
- 11:00 Amanpour and Company**

## 7 Thursday

- 7:00 Mid American Gardener**
- 7:30 Ask This Old House** (TV-G)  
*Paver Walkway, Mowing a Lawn 101.*
- 8:00 Grandma Stand** (TV-G)  
At a time when the lack of connection is epidemic, wise and witty grandmothers sit behind a lemonade-style stand in New York City's Central Park, offering heartfelt life lessons to passersby. *Repeated 1 am 5/8 & 12 pm 5/10.*
- 9:00 Miss Fisher's Murder Mysteries** (TV-14)  
*Death Defying Feats.* Season 3, episode 1 of 8. When the unfortunate assistant in a magic show is beheaded on stage, Jack and Phryne's investigation unravels a secret murder in the past. Phryne's estranged father makes a surprise visit. *Repeated 2 am 5/8, 6 pm 5/10 & 2 pm 5/11.*
- 10:00 Grantchester on MASTERPIECE** (TV-14) (DVS)  
Season 4, episode 2 of 5. When a professor dies at a cutting-edge computer laboratory, Geordie turns to Leonard for assistance. As they discover the messy love lives of the computer laboratory team, Cathy is tricked, Will returns, and Mrs. C makes a shocking discovery. *Repeated 3 am 5/8.*
- 11:00 Amanpour and Company**

## 8 Friday

- 7:00 Washington Week with the Atlantic**
- 7:30 Firing Line with Margaret Hoover**
- 8:00 Great Performances** (TV-14)  
*Suffs.* See page 11. *Repeated 1 am 5/9 & 2 am 5/11.*
- 10:30 Happiness** (TV-14)  
Episode 1 of 6. After a setback on Broadway, director Charlie Summers returns to his hometown, where he reluctantly joins the amateur musical theater society.
- 11:00 Amanpour and Company**

## 9 Saturday

- 7:00 Sister Boniface Mysteries** (TV-PG)  
*Good Samaritan.* Season 2, episode 10 of 10. The language of flowers figures heavily in Sister Boniface's ability to identify the killer. *Repeated 3 pm 5/11.*
- 8:00 Midsomer Murders** (TV-PG)  
*Painted In Blood, Parts 1 & 2 of 2.* Season 6, episodes 5 & 6 of 10. When Joyce Barnaby finds a dead woman while painting watercolors of Midsomer Florey, she unwittingly uncovers a nest of plots and double-dealings.
- 10:00 Astrid** (TV-14)  
*The Arabian Nights.* Season 4, episode 2 of 8. See page 10. A supernatural killing puzzles Astrid in a case where all is not as it seems.
- 11:00 Austin City Limits** (TV-PG)  
*Gary Clark Jr./Black Pumas.*

## 10 Sunday

- 7:00 Call the Midwife** (TV-14) (DVS)  
Season 15, episode 8 of 8. As Sister Veronica weighs her future with The Order, Dr. Turner makes a final stand against the council's news before the maternity home closes. *Repeated 2 am 5/12.*
- 8:00 Miss Austen on MASTERPIECE** (TV-PG) (DVS)  
Part 2 of 4. Cassandra is determined to keep Jane's letters private. *Repeated 12 am 5/11 & 3 am 5/12.*
- 9:00 The Count of Monte Cristo on MASTERPIECE** (TV-14) (DVS)  
*The Last Two.* Episode 8 of 8. With one enemy out of the way, Edmond works to ensure that the remaining two pay for their crimes against him. *Repeated 1 am 5/11 & 4 am 5/12.*
- 10:00 Seaside Hotel** (TV-14)  
*Buy, Sell, and Rosita.* Season 10, episode 6 of 9. Amanda has to give up the hotel if she and Frida are to have a future with Uwe in Germany.
- 11:00 Murder in the Mountains** (TV-14)  
*Blood Ties.* Episode 6 of 13. Hannes runs into an old friend when the Countess goes harp shopping in a sleepy town.

## 11 Monday

- 7:00 Antiques Roadshow** (TV-G)  
*Grants Farm, Hour 3.*
- 8:00 Antiques Roadshow** (TV-G)  
*Santa Fe's Museum Hill, Hour 3.*
- 9:00 Independent Lens** (TV-14) (DVS)  
*Natchez.* In a Mississippi town, historic homes fuel a tourism economy rooted in antebellum nostalgia. Through tour guides, homeowners, and activists, Natchez captures how public history is performed, and how unresolved racial tensions have shaped the town. *Repeated 2 am 5/13.*
- 10:30 Two Wars: The Road to Integration** (TV-PG)  
This film documents the tremendous endeavor to integrate the U.S. Armed Forces and what that meant for Black service members and their families. *Repeated 1 am 5/12.*
- 11:00 Amanpour and Company**

## 12 Tuesday

- 7:00 Finding Your Roots** (TV-PG) (DVS)  
*Far from Home.* Henry Louis Gates Jr. maps the family trees of pop icon Cyndi Lauper and actors Jamie Chung and Danny Trejo, exploring records in Italy, Korea, and Mexico. *Repeated 2 pm 5/13 & 4 am 5/14.*
- 8:00 Finding Your Roots** (TV-PG)  
*Larger Than Life.* Henry Louis Gates Jr. introduces actors Lea Salonga and Amanda Seyfried to ancestors who are every bit as dramatic as the characters they've played on stage and screen. *Repeated 3 am 5/14 & 4 am 5/18.*
- 9:00 Frontline**  
*The President vs. the Fed.*  
*Repeated 1 am 5/13.*
- 10:00 WW2: Women on the Frontline**  
*The War in the Air.* Part 2 of 3. Meet the female flying aces who took on Hitler's aerial threat and helped win the war.
- 11:00 Amanpour and Company**

## 13 Wednesday

- 7:00 Nature** (TV-PG)  
*Attenborough and the Sea Dragon.* Join Sir David Attenborough as he pieces together the remarkable discovery of the Ichthyosaur, a fearsome fish lizard that lived during the age of dinosaurs. *Repeated 2 pm 5/14.*
- 8:00 NOVA** (TV-G) (DVS)  
*Decoding The Universe: Quantum.* Welcome to the quantum universe, where particles can spin in two directions at once, observing something changes it, and a thing on one side of the galaxy can instantly affect something on the other, as if the space between them didn't exist. *Repeated 2 pm 5/15.*
- 9:00 Shared Planet** (TV-PG)  
*Forests.* Part 3 of 4. Forests are the lungs of our planet, yet millions of hectares vanish every year. Journey from Guatemala to Japan to meet the pioneers sharing space with wildlife and restoring the way we coexist and cultivate among the trees. *Repeated 1 am 5/14 & 1 am 5/17.*
- 10:00 The Green Planet** (TV-PG) (DVS)  
*Seasonal Worlds.* Part 3 of 5. Sir David Attenborough reveals the surprising and dramatic effects of the four seasons on plant life.
- 11:00 Amanpour and Company**

## 14 Thursday

- 7:00 Mid American Gardener**
- 7:30 Ask This Old House** (TV-G)  
*Tile Soap Holders; Swirl Ceiling.*
- 8:00 Gene Hackman: Star of the Silver Screen** (TV-PG)  
This film explores the remarkable career of the legendary Gene Hackman (1930-2025), a two-time Academy Award winner and native of Danville, Illinois. *Repeated 1 am 5/15 & 12 pm 5/17.*
- 9:00 Miss Fisher's Murder Mysteries** (TV-14)  
*Murder and the Maiden.* Season 3, episode 2 of 8. When a high-ranking RAAF officer disappears without explanation from an RAAF Base, Phryne is called upon by an old flame to discreetly solve the mystery. *Repeated 2 am 5/15, 6 pm 5/17 & 2 pm 5/18.*
- 10:00 Grantchester on MASTERPIECE** (TV-14) (DVS)  
Season 4, episode 3 of 5. When a child from an isolated farming family is accused of murder, Will is the only one able to reach him, and it brings out an unexpected side of the young vicar. *Repeated 3 am 5/15.*
- 11:00 Amanpour and Company**

## 15 Friday

- 7:00 Washington Week with the Atlantic**
- 7:30 Firing Line with Margaret Hoover**
- 8:00 Great Performances** (TV-PG)  
*Irving Berlin's Top Hat.* See page 11. *Repeated 1 am 5/16 & 2:30 am 5/17.*
- 10:30 Happiness** (TV-PG)  
Episode 2 of 6. Charlie's desperation to get back to Broadway draws him into Pizazz's rehearsals for 'The Trojan Horse.'
- 11:00 Amanpour and Company**

## 16 Saturday

- 7:00 Sister Boniface Mysteries** (TV-PG)  
*The Star of the Orient, Part 1 of 2.* Season 2. When a precious jewel is stolen from a snowbound train, the crime-solving nun turns from passenger to detective. *Repeated 3 pm 5/18.*
- 8:00 Midsomer Murders**  
*Tale of Two Hamlets, Parts 1 & 2 of 2.* Season 6, episodes 7 & 8 of 10. The death of a young film star at the opening of a 'satanic experience' at his family's ancestral home brings Barnaby and Troy to the feuding villages of Upper and Lower Warden.
- 10:00 Astrid** (TV-14)  
*30,000 Feet.* Season 4, episode 3 of 8. See page 10. Raphaelle escorts a repatriated serial killer on a plane, but the killer dies mid-flight.
- 11:00 Austin City Limits** (TV-PG)  
*Jelly Roll/The War and Treaty.*

## 17 Sunday

- 7:00 Miss Austen on MASTERPIECE** (TV-PG) (DVS)  
Part 3 of 4. Through her feverish delirium, Cassandra guards Jane's letters from Mary Austen. As she drifts in and out of consciousness, she relives the dramatic events of her youth. *Repeated 12:30 am 5/18 & 1:30 am 5/19.*
- 8:00 Miss Austen on MASTERPIECE** (TV-PG) (DVS)  
Part 4 of 4. Cassandra uncovers the truth about Isabella and Lidderdale's past. *Repeated 1:20 am 5/18 & 2:30 am 5/19.*
- 9:00 Downton Abbey on MASTERPIECE** (TV-PG)  
Season 1, episode 1 of 4. Laura Linney hosts. When the Titanic goes down, Lord Grantham loses his immediate heirs and his daughter Mary loses her fiancé, throwing Downton Abbey and its servants into turmoil.
- 10:30 Seaside Hotel** (TV-14)  
*Small Changes.* Season 10, episode 7 of 9. Seerup wants to keep the hotel as it is. Madsen and Weyse receive an offer from Odegaard Andersen, and Otilia gets a letter.
- 11:30 Murder in the Mountains** (TV-14)  
*Rubbish Diver.* Episode 7 of 13. Nina and Lukas connect a poisoning case to the murder of a prostitute.

## 18 Monday

- 7:00 Antiques Roadshow** (TV-G)  
*Junk in the Trunk 15.*
- 8:00 Antiques Roadshow** (TV-G)  
*Cheekwood Estate & Gardens, Hour 1.*
- 9:00 Independent Lens** (TV-14)  
*Light of the Setting Sun.* See page 3. *Repeated 2 am 5/20.*
- 10:30 First Peoples, First Stories** (TV-PG)  
See page 10. Part 1 of 2. *Repeated 1 am 5/20.*
- 11:00 Amanpour and Company**

## 19 Tuesday

- 7:00 Finding Your Roots** (TV-14)  
*Stranger Than Fiction.* Henry Louis Gates Jr. explores the family trees of two award-winning writers: novelist Amy Tan and poet Rita Dove, traveling across China and the American South. *Repeated 2 pm 5/20, 4 am 5/21 & 4 am 5/25.*
- 8:00 American Masters** (TV-14) (DVS)  
*W.E.B. Du Bois: Rebel with a Cause.* See page 11. *Repeated 2 am 5/21 & 1:30 am 5/26.*
- 10:00 WW2: Women on the Frontline**  
*Boots on the Ground.* Part 3 of 3. In this episode, the little-known feats of journalists, nurses and guerilla fighters take center stage.
- 11:00 Amanpour and Company**

## 20 Wednesday

- 7:00 Nature** (TV-PG) (DVS)  
*Attenborough's Wonder of Song.* David Attenborough presents seven of the most remarkable animal songs found in nature and explores the significance of these songs in the lives of their species. *Repeated 2 pm 5/21.*
- 8:00 NOVA** (TV-PG) (DVS)  
*When Whales Could Walk.* Egyptian desert fossils reveal clues to the evolution of the biggest animals on Earth. *Repeated 2 pm 5/22.*
- 9:00 Shared Planet** (TV-PG)  
*Waters.* Part 4 of 4. From the reefs of Indonesia to an Idaho beaver dam, dive into the stories of people setting a new standard for aquatic wildlife protection, key to a hopeful future for the largest and most essential habitat on our planet. *Repeated 1 am 5/21 & 1 am 5/24.*
- 10:00 The Green Planet** (TV-PG) (DVS)  
*Desert Worlds.* Part 4 of 5. Sir David Attenborough explores the hostile world of the desert, where plants can spend decades waiting for rain or travel to find it. Survival tactics include using weapons, camouflage, and forming surprising alliances with animals.
- 11:00 Amanpour and Company**

## 21 Thursday

- 7:00 Mid American Gardener**
- 7:30 Prairie Fire**  
See page 19.
- 8:00 Waal River Crossing: 1944** (TV-PG)  
See page 2. *Repeated 1 am 5/22 & 2 pm 5/24.*
- 9:00 Miss Fisher's Murder Mysteries** (TV-14)  
*Murder and Mozzarella.* Season 3, episode 3 of 8. In the world of family Italian restaurants, old grudges from the village are stirred up when matriarch Nonna Luisa dies and the ownership of a secret book of recipes becomes the suspected motive. *Repeated 2 am 5/22, 6 pm 5/24 & 2 pm 5/25.*
- 10:00 Grantchester on MASTERPIECE** (TV-14) (DVS)  
Season 4, episode 4 of 5. When Will asks for Geordie's help with a family matter, Geordie is surprised to discover where Will really grew up: a house filled with secrets and lies. *Repeated 3 am 5/22.*
- 11:00 Amanpour and Company**

## 22 Friday

- 7:00 Washington Week with the Atlantic**
- 7:30 Firing Line with Margaret Hoover**
- 8:00 Great Performances** (TV-G)  
*An Evening with Nicole Scherzinger.* See page 11. *Repeated 1:30 am 5/23 & 2 am 5/24.*
- 9:30 Great Performances** (TV-G)  
*Now Hear This: Rising Stars.* Visit Julliard Pre-College with Scott Yoo to play with some of tomorrow's virtuosos and travel to Singapore to meet rising star, Chloe Chua, who reminds Yoo of the dedication and passion required to prepare for a professional career. *Repeated 3 am 5/23 & 3:30 am 5/24.*
- 10:30 Happiness** (TV-14)  
Episode 3 of 6. Charlie champions Gloria's vision, despite Adrian's resistance, unintentionally encouraging the ensemble to look to Charlie as the new director.
- 11:00 Happiness** (TV-PG)  
Episode 4 of 6. Under Charlie's direction, rehearsals flourish; Mia shines; Gloria and Connor grow closer; and Jacqui's jealousy stirs conflict.
- 11:30 Amanpour and Company**

## 23 Saturday

- 7:00 Sister Boniface Mysteries** (TV-PG)  
*The Star of the Orient, Part 2 of 2.* Season 2. See 7 pm 5/16. *Repeated 3 pm 5/25.*
- 8:00 Midsomer Murders**  
*Birds of Prey, Parts 1 & 2 of 2.* Season 6, episodes 7 9 & 10 of 10. Troy and Constable Sarah Pearce are in Midsomer investigating a wildlife crime while Barnaby follows up on the discovery of a local man's car — and body — in the river.
- 10:00 Astrid** (TV-14)  
*Immortal.* Season 4, episode 4 of 8. See page 10. Astrid and Raphaëlle investigate when a man is stabbed outside his home.
- 11:00 Austin City Limits** (TV-PG)  
*Chris Stapleton.*

## 24 Sunday

- 7:00 National Memorial Day Concert 2026** (TV-G)  
See page 2. *Repeated at 8:30 pm.*
- 8:30 National Memorial Day Concert 2026** (TV-G)  
See page 2.
- 10:00 Downton Abbey on MASTERPIECE** (TV-PG)  
Season 1, episode 2 of 4. Laura Linney hosts. Mary entertains three suitors, including a Turkish diplomat whose boldness leads to a surprising event. Downstairs, the shocking former life of Carson, the butler, is unmasked and Bates risks his health to remain valet.
- 11:30 Murder in the Mountains** (TV-14)  
*Firestarter.* Episode 8 of 13. A biker gang's member is poisoned by snake venom.

**25** Monday

- 7:00 Antiques Roadshow** (TV-G)  
*Celebrating Asian-Pacific Heritage.*
- 8:00 Antiques Roadshow** (TV-G)  
*Cheekwood Estate & Gardens, Hour 2.*
- 9:00 Independent Lens** (TV-14) (DVS)  
*Third Act.* See page 3. Repeated 3 am 5/27.
- 10:30 First Peoples, First Stories** (TV-PG)  
See page 10. Part 2 of 2.
- 11:00 Amanpour and Company**

**26** Tuesday

- 7:00 Finding Your Roots** (TV-PG)  
*Dreamers One and All.* Henry Louis Gates Jr. explores the ancestry of actor Sharon Stone and model Chrissy Teigen, traveling across Europe and Thailand. Repeated 2 pm 5/27 & 4 am 5/28.
- 8:00 Seabiscuit: American Experience** (TV-G) (DVS)  
Seabiscuit's unlikely career illuminates the precarious economic conditions that defined America in the 1930s and explores the behind-the-scenes world of thoroughbred racing. Repeated 3 am 5/28.
- 9:00 Frontline**  
*The War Cabinet.* Repeated 1:30 am 5/27.
- 10:30 Compass Points from PBS News**
- 11:00 Amanpour and Company**

**27** Wednesday

- 7:00 Nature** (TV-PG) (DVS)  
*Attenborough and the Jurassic Sea Monster.* Follow Sir David Attenborough and a team of forensic experts as they unearth the fossil of a giant Pliosaur, the largest Jurassic predator ever known. Repeated 2 pm 5/28.
- 8:00 NOVA** (TV-PG) (DVS)  
*Great Mammoth Mystery.* Featuring hands-on experiments with replicas of Neanderthal-era spears and photorealistic reconstructions of the site's ancient riverside setting, the world of prehistoric Britain is brought vividly to life, hosted by Sir David Attenborough. Repeated 2 pm 5/29.
- 9:00 Secrets of the Dead** (TV-PG)  
*China's Bronze Kingdom.* See page 3. Repeated 1 am 5/28 & 3 pm 5/29.
- 10:00 The Green Planet** (TV-PG) (DVS)  
*Human Worlds.* Part 5 of 5. Sir David Attenborough reveals how humans are helping plants, many of which face extinction. From projects in Africa to re-seeding the landscape to rebuilding a Brazilian rainforest tree by tree, everyone can work to make our world a little wilder.
- 11:00 Amanpour and Company**

**28** Thursday

- 7:00 Mid American Gardener**
- 7:30 Ask This Old House** (TV-G)  
*Outdoor TV; Granite Firepit.*
- 8:00 Britain by the Book** (TV-PG)  
Inspired by her passion for books, actor and comedian Me! Giedroyc explores the spectacular scenery and iconic locations made famous by some of Britain's favorite books and films. Repeated 1 am 5/29.
- 9:00 Miss Fisher's Murder Mysteries** (TV-14)  
*Blood and Money.* Season 3, episode 4 of 8. The same morning Phryne is approached by a young boy whose brother has gone missing, Dr. Mac calls her to advise that another boy has been found in a shallow grave near the hospital where she works. Repeated 2 am 5/29.
- 10:00 Grantchester on MASTERPIECE** (TV-14) (DVS)  
Season 4, episode 5 of 5. While Will struggles with a decision that will determine his future, the violent death of a young man becomes conclusive proof to Georgie that the country's gone to the dogs. Repeated 3 am 5/29.
- 11:00 Amanpour and Company**

**29** Friday

- 7:00 Washington Week with the Atlantic**
- 7:30 Firing Line with Margaret Hoover**
- 8:00 Great Performances**  
*Broadway Musicals: A Jewish Legacy.* See page 11.
- 10:00 Happiness** (TV-14)  
Episode 5 of 6. Charlie's impulsive vision disrupts Nicky's schedule; tensions flare at Pizazz, leading to a frustrated Charlie showing his true feelings.
- 10:30 Happiness** (TV-14)  
Episode 6 of 6. Opening night dazzles the audience but simmering resentment could undo all Charlie's hard work.
- 11:00 Amanpour and Company**

**30** Saturday

- 5:30 Barbra Streisand: Timeless — Live in Concert**
- 7:30 Great Performances**  
*Josh Groban: An Evening at Union Chapel.*
- 9:30 Celtic Woman 20th Anniversary Concert**
- 11:30 Riverdance 25th Anniversary**

**31** Sunday

- 5:00 The Count of Monte Cristo on MASTERPIECE**  
*The Treasure / The Red Room.* Episodes 3 & 4 of 8.
- 7:30 All Creatures Great and Small: Seasons of the Dales**
- 9:00 Downton Abbey on MASTERPIECE** (TV-PG)  
Season 1, episode 3 of 4.
- 11:00 The All New Rock, Pop and Doo Wop (My Music)**

# Stream season 6 of 'The Nordic Murders'

Starting on May 1, season 6 of **The Nordic Murders** will be available to binge with WILL Passport. In this intense detective drama, former prosecutor Karin Lossow (Katrin Sass) solves criminal cases on the picturesque and usually peaceful island of Usedom on Germany's Baltic Sea. This season will cover the dark story lines that draw the characters closer to understanding their mysterious and murderous pasts.



A new murder case is taken on by Detective Rainer Witt and his team, Holm Brendel and Dorit Martens, who investigate the mysterious death of a man found on a snowy bench, as well as the murder of a regular on the Baltic Sea. As the season picks up and connections are made, the psychological tension of the series builds to a crescendo of excitement. Everyone is looking for justice, but what will they actually find? Friends of WILL can watch all five previous seasons any time with Passport. This Walter Presents series is presented in German with English subtitles.

## « COMING AND GOING THIS MONTH TO WILL Passport



### MAY HIGHLIGHTS

#### Independent Lens

- The Inquisitor, 5/24, above
- The Librarians, 5/10

#### Climate California

- Flow, 5/5
- RPG, 5/19
- Run Towards the Fire, 5/12
- Machina Ex Deo, 5/26

#### The M Factor: Before the Pause, 5/18

#### POV

- The Body Politic, 5/24

#### Walter Presents (with English subtitles)

- Carpe Diem, 5/15 (French)
- The Nordic Murders, season 4, 5/1 (German)
- Murder in the Mountains, 5/22 (German)
- Velvet Collection, season 2, 5/8 (Spanish)
- The Wagner Method, season 4, 5/29 (French)

### LEAVING SOON

**Agatha and the Midnight Murders**, 5/11

**Boblo Boats: A Detroit Ferry Tale**, 5/1

**Colombia — Wild and Free**, 5/25

#### David Holt's State of Music

- Becky Buller Band, 5/15
- Jontavious Willis, 5/8
- Ruthie Foster, 5/22

**Gershwin Prize: Lionel Richie**, 5/17

**Journey of the Bonesetter's Daughter**, 5/1

#### Lidia Celebrates America

- Flavors That Define Us, 5/30

#### Nature, 5/1

- America's Wild Horses
- Cowboys, Caimans, and Capybaras
- Rhino on the Run
- Yellowstone in Winter

#### NOVA

- Bombing Hitler's Supergun, 5/11
- Saving the Right Whale, 5/3

#### POV

- Through the Night, 5/11

**Reunions**, episodes 1–6, 5/1

**Transfers**, 5/1

Go to [will.illinois.edu/passport](http://will.illinois.edu/passport), your TV's app menu, or your preferred streaming device, to unlock more shows with WILL Passport via the PBS App.





# Interns support news service, gain experience

Students continue to play a vital role at Illinois Public Media. From reporting the news to producing segments for our ongoing programs to helping on-air elements flow smoothly on our WILL stations, students support our services while the experience provides an opportunity for them to challenge themselves and grow professionally. We are proud to offer a range of opportunities to students from the University of Illinois. Here are two students who served in roles at IPM over the past year.

**Giuliana Means**, a sophomore journalism student at the University of Illinois Urbana-Champaign from the California

Bay Area, received the Robert O. Endres Endowed Internship for 2025-26 year, although she joined Illinois Student Newsroom in the spring of 2025. In the 2025-26 Hearst Journalism Awards

Program's Audio News and/or Features Competition, Means tied for 19th with her story on how voting will affect Champaign County's only low-barrier shelter.

During her time at IPM, her primary job was producing the daily 217 Today podcast and reporting.

"I created and published stories for 217 Today on Spotify, WILL and Illinois Public Media websites along with a written article. I also reported on various stories needing coverage requested by editors," Means said.

"I learned to utilize multiple publishing engines and story databases while working closely with hosts to produce the series. I was also able to use my skills with audio and image editing software to create a podcast with brand continuity that both looked and sounded the same across different days."

**Grace Merki**, a sophomore studying sound design and technology in the College of Fine and Applied Arts with a

minor in journalism, completed the final year of the Donald P. Mullally Internship Scholarship she received for 2024-2026. She assisted our broadcast operations team in the day-to-day operations of WILL Radio. This included editing on-air promos, adding (program) drops into the system, and recording broadcast continuity announcements.

"Being entrusted with real production work has helped me build both confidence and technical skills, while also giving me a clearer understanding of what goes into daily radio operations," Merki said.

"Everything I have worked on this year has contributed to my growth, both creatively and professionally. Through this internship, I have been able to apply what I am learning in the classroom to real-world situations, reinforcing my coursework in a way that simply wouldn't be possible otherwise. It has also helped me refine my interests and better understand the career path I hope to pursue."



## Students gain experience as Brandt Fellows

In our February issue of Patterns, we featured two students who worked for us last fall as Mark L. Brandt Public Engagement Fellows.

Senior **Megan Harding** (top right) worked as a Crisis Communications Fellow, and

**Adelyn Mui** produced and co-hosted the weekly arts/entertainment calendar called **WILL Call**.

Read our story online at [go.illinois.edu/BrandtFellows2025](http://go.illinois.edu/BrandtFellows2025).



# Students create short docs for 'Prairie Fire'

## PRAIRIE & FIRE

Students in the Advanced Documentary Production course in the University of Illinois College of Media have been busy planning, pitching, filming, editing, and producing



segments to possibly air on **Prairie Fire**, Illinois Public Media's magazine program that airs on the third Thursday of each month on WILL-TV. The course is taught by Alison Davis, lecturer of journalism in the college, who worked on the original **Prairie Fire**, which aired from 1992 to 2008 — first as a production assistant then later as the show's producer and host.

"We've really enjoyed partnering with Alison's class these past two years," said Taylor Plantan, **Prairie Fire** producer. "It's truly a full circle moment to have Alison — the original **Prairie Fire** host — guide these students through the production process, and we've been really impressed with the production quality and care the students give to each of their stories."

Students in the course produced five short documentaries. Segments that will air on this month's **Prairie Fire** will be chosen by the production team. The possible stories include:



**Central Illinois Aikikai**, a community martial arts dojo that brings people together with physical movement and a welcoming social setting; **Live at The Mirror**, a 137-old house in Urbana that is in its final days as a hub for traveling college bands; **Orange Krush**, one of the most electric student sections in the country at the last home game of a historic Illinois basketball season; **Skeuwep**, skating culture in central Illinois through a skate shop in Urbana; and **The Space**, a downtown Champaign restaurant that also serves as a community hub for music, art, and self-expression.

The selected student segments will air on **Prairie Fire** at 7:30 pm Thursday, May 21. Davis and/or some of the students also may appear with behind-the-scenes commentary.

You also can watch **Prairie Fire** episodes on demand on YouTube, the PBS App or on our website at [will.illinois.edu/prairiefire](http://will.illinois.edu/prairiefire).

## Bellizzi contributes to Book Mentor Project



For the past two years, University of Illinois student worker **Amelia Bellizzi** has worked for Illinois Public Media's Book Mentor Project.

Since 2004, the program has been connecting pre-kindergarten students with books, learning activities, and caring volunteers from across east central Illinois. The initiative, funded by a grant from PNC's Grow Up Great Foundation, makes reading an exciting, shared experience for children, educators, and families.



During her time at IPM, Bellizzi provided administrative support and helped organize and streamline our books and materials. She created a system to file and inventory the books and then prepped the books (roughly 1,300 each semester) and materials each month for the Headstart programs, including dropping off all of these materials.

"Being part of the Book Mentor Project gave me a unique connection to the community," Bellizzi said. "Working alongside Head Start staff, families, the volunteers, and IPM team members showed me how powerful it is to invest in younger generations. Seeing that impact firsthand made me grateful to play even a small role and to feel genuinely connected to the community around me in a newfound way."

# IPM nominated for four Crystal Mic Awards, including Best Station

The Illinois News Broadcasters Association has announced finalists for its annual Crystal Mic Awards, and Illinois Public Media has placed in four categories for small market radio. The annual awards honor the best radio and television work serving Illinois audiences.

"Being a journalist in the Illinois Public Media newsroom means bringing our community up-to-the-minute breaking news and providing in-depth information with context and empathy," said Reginald Hardwick, IPM director of news and public affairs. "It's our honor and we appreciate the recognition."



The nominations:

## Best Station

"Our Best Small Market Radio Station entry included breaking news and weather coverage, a segment from **The 21st Show**, interviews from our series about the impact of Donald Trump returning to office as president, as well as our **Dialogue** and **Weather Realness** podcasts," Hardwick said. "Every day, we're committed to providing high quality journalism to the people of Illinois."

## "Farm Fields on Fire," Breaking News

Jim Meadows and meteorologist Andrew Pritchard scrambled on the air when a large wildfire consumed acres of farm fields in eastern Champaign County, closing I-74. They provided necessary information to drivers with nowhere to go on the interstate during the emergency. *Read/listen online: [go.illinois.edu/farm-fields-on-fire](http://go.illinois.edu/farm-fields-on-fire)*

## "Eleven People, Five Seats," Political Reporting

Emily Hays produced an easy-to-understand guide to help people interested in the Champaign Unit 4 School Board race meet the candidates and know their positions. Because it was tied to an election, the coverage was nominated for a political reporting award. *Listen/Read online: [go.illinois.edu/eleven-people-five-seats](http://go.illinois.edu/eleven-people-five-seats)*

## "What We Brought," Podcasting

This informational and emotional podcast is produced and edited by journalists Nidhi Shastri, Kulsoom Khan, Arielle Raveney, and Arjun Thakkar. It brought to life some of the personal stories of Asian immigrants to Champaign County. *Listen at [will.illinois.edu/whatwebrought](http://will.illinois.edu/whatwebrought) or anywhere you get your podcasts*

Winners were announced after this issue went to the printer at an awards dinner in Champaign. We will include the winners in our June issue.

## More ways to support, advocate for IPM

Illinois Public Media joins more than 100 other public media stations for the fourth annual Public Media Giving Days. The two-day event provides a great opportunity for you to celebrate what public media gives to you and your community and to join together in giving back. As we continue to try to compensate for the loss of \$1.5 million in federal funding last year, your support is more important than ever. During the event, which runs May 1-2, we encourage you to GIVE and ADVOCATE for our stations. Thank you for everything you do to support our stations.

To GIVE to IPM, go to [willgive.org](http://willgive.org) or scan the QR Code. Every gift is important.

To ADVOCATE for our stations, tell others — through social media or informal conversations with those you know — why you value our stations. Sharing your "why" may help others discover public media or nudge current viewers and listeners to financially support our stations. Tag your online posts with #PublicMediaGives and #IllinoisPublicMedia.



## Thank you, Program Underwriters!

Private support accounts for the largest single source of funds necessary to make Illinois Public Media and the WILL stations great resources for communities across central Illinois.

40 North/88 West  
7 Senses  
AARP  
Abraham Lincoln Presidential  
Library and Museum  
Abyss Wares  
Allerton Park and Retreat  
Center  
Amara Yoga & Arts  
Ameren Illinois  
Art Mart  
Baroque Artists of Champaign-  
Urbana  
Beard Culture Barbershop &  
Gallery  
The Beat @ Market Street  
Beckman Institute for Advanced  
Science and Technology  
Birch Tree Counseling  
Busey  
Campus Middle School for Girls  
Center for Advanced Study  
Champaign County Chamber  
of Commerce  
Champaign County  
Environmental Stewards  
Champaign Park District  
Champaign Urbana Public  
Health District  
Champaign-Urbana Spinners  
and Weavers Guild  
Champaign-Urbana Symphony  
Christie Clinic  
The CHORALE  
City of Champaign Community  
Coalition  
City of Champaign —  
Equity and Engagement  
Department  
City of Urbana Arts and  
Culture  
City of Urbana — Market @  
The Square  
Clean Grid Alliance  
Common Ground Food Co-op  
Community Shares of Illinois  
Countryside School  
C-U BIPOC Artist Collective

C-U Jazz Festival  
CU Schools Foundation  
CVH Entertainment  
Dance at Illinois  
Danville Symphony Orchestra  
Delta Dental  
Des Moines Art Center  
Development Foundation  
Divine Not Divided  
Dixon Graphics  
Don Moyer Boys & Girls Club  
Douglass Branch Library  
Enchanted Viola  
European Union Center  
Exceptional Artists  
Experience Champaign-Urbana  
The Gillette Group – Keller  
Williams  
Health in Harmony Wellness  
Center  
Housing Authority of  
Champaign County  
Humanities Research Institute  
The Idea Store  
Illini Mattress  
Illinois Arts Council  
Illinois State Board of  
Education  
Illinois Symphony Orchestra  
The Initiative in Holocaust,  
Genocide, and Memory  
Studies  
International Galleries  
Institute for Genomic Biology  
Iyengar CU Yoga Institute  
JAC Local 149 Plumbers,  
Pipefitters & Service  
Technicians  
Jay Goldberg Events  
Krannert Center for the  
Performing Arts  
Landscape Recycling Center  
Leek and Sons Funeral Home &  
Cemetery  
The Literary  
Live Nation  
Lonestar Lodge #18  
Mammoth, Inc.

We appreciate the following organizations that have stepped forward to join the individuals and families who support award-winning public media services.

Mashawee Restaurant  
MedServ Equipment Corp  
NAACP of Champaign County  
Natural Gourmet  
Neil Street Blues  
New Prairie Solar  
Osher Lifelong Learning  
Institute  
Pixo  
The Prairie Enthusiasts  
Prairieland Feeds  
Pygmalion  
Record Swap  
Rental City  
Russ Rybicki SharePower  
Responsible Investing  
Sinfonia da Camera  
Soul on Sunday  
Spurlock Museum of World  
Cultures  
State Farm Center  
Sweeney Brothers Fine Flooring  
Symphony Orchestra Guild of  
Decatur  
Ten Thousand Villages  
TrophyTime  
TUNE CHI  
University of Illinois  
Department of Electrical and  
Computer Engineering  
University of Illinois  
Entomology Grad Student  
Association  
University of Illinois Physics  
University of Illinois Student  
Affairs  
University YMCA  
The Upper Bout  
Urbana 116 Family Engagement  
Committee  
Urbana Acupuncture  
Virginia Theatre  
Wayne Strong Foundation  
Western Illinois University  
Winding Ivy Community  
World Harvest Foods  
Yoga Institute of Champaign-  
Urbana

73% of the NPR  
audience prefers to  
shop at businesses  
that support public  
radio.

Join this illustrious group of business owners who benefit from reaching an influential audience by underwriting quality and award-winning programs such as: **Morning Edition**, **The 21st Show**, and **All Things Considered**. Contact our development department at 217-300-3019 for details.

**Friends of will**

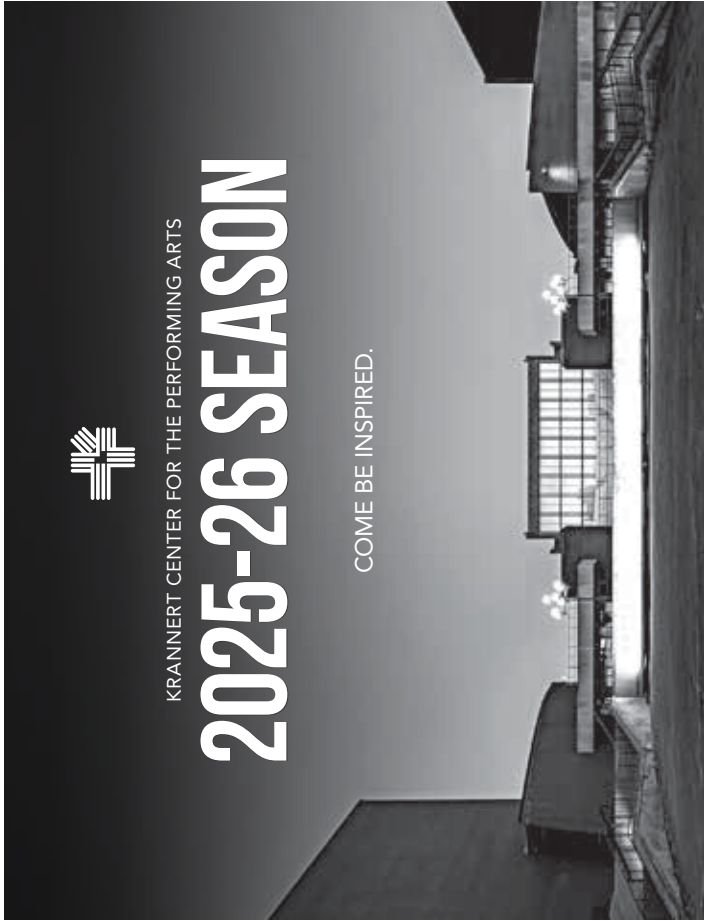
Campbell Hall  
300 North Goodwin Avenue  
Urbana, IL 61801-2316



KRANNERT CENTER FOR THE PERFORMING ARTS

# 2025-26 SEASON

COME BE INSPIRED.



**MOVING?** Let your public broadcasting membership move with you.

Fill out the form below and send it with your address to:

**Friends of WILL, 300 North Goodwin Avenue, Urbana, IL 61801-2316**

- Check here if you wish to remove your name from our membership list.
- Please update my membership with this new address:

Name: \_\_\_\_\_  
Street: \_\_\_\_\_  
City: \_\_\_\_\_ State: \_\_\_\_\_ Zip: \_\_\_\_\_  
Phone: (    ) \_\_\_\_\_ Email: \_\_\_\_\_

Go to [will.illinois.edu/optout](http://will.illinois.edu/optout) to go green & receive Patterns digitally.

NONPROFIT  
ORGANIZATION  
U.S. POSTAGE PAID  
CHAMPAIGN, IL  
PERMIT NO. 453