

# Patterns

npr PBS

NOVEMBER 2024

Friends of WILL Membership Magazine



## STATE OF CHANGE

Our annual environmental series explores the impact of invasive species in Illinois

JOIN US FOR

*Friendsgiving*

2024

SEE PAGE 20

## College of Media

Membership Hotline: 800-898-1065  
General inquiries: 217-333-7300  
Campbell Hall  
300 N. Goodwin Ave., Urbana, IL 61801-2316

## Mailing List Exchange

Donor records are proprietary and confidential.  
IPM does not sell, rent, or trade its donor lists.

## Patterns

*Friends of WILL Membership Magazine*  
Editor & Designer: Doris Dahl  
Art Director: Kurt Bielema

## RADIO

### 90.9 FM

A mix of classical and other music and NPR information programs, including local news. Also with live streaming on [will.illinois.edu](http://will.illinois.edu).  
*See pages 4-5.*

### 101.1 FM

Illinois Soul is a mix of Black-hosted NPR and local news programs, smooth jazz, neo soul, R&B, and throwback jams. 101.1 FM is available in the Champaign-Urbana area. It is also heard on 90.9 FM HD2 with live streaming on [illinoisoul.org](http://illinoisoul.org).  
*See pages 6-7.*

### 580 AM

News and information, NPR, BBC, agriculture, talk shows. Also heard on 90.9 FM HD3 with live streaming on [will.illinois.edu](http://will.illinois.edu). *See page 8.*

## TELEVISION

### WILL-HD

All your favorite PBS and local programs, in high definition when available. 12.1: Contact your cable or satellite provider for channel information. *See pages 9-16.*

### WILL Kids 24/7

Around the clock, award-winning children's programming. 12.2: also available on Comcast and Mediacom.

### WILL Create


Cooking, travel, home improvement, arts and crafts, and gardening. 12.3: also available on Comcast and Mediacom.


### WILL World

PBS documentaries, news, and public affairs. 12.3: also available on Comcast and Mediacom.

 [will.illinois.edu](http://will.illinois.edu)

 [facebook.com/ILPublicMedia](https://facebook.com/ILPublicMedia)

 @ILPublicMedia

 @IllinoisPublicMedia

 @ILPublicMedia

## Powering your inbox!

Browse our e-newsletters and sign up to receive behind-the-scenes information in your email inbox that is targeted to your interests. Whether it's news, classical music, or general information about our stations — we have you covered.

[will.illinois.edu/signup](http://will.illinois.edu/signup)



Printed with soy ink on recycled, recyclable paper. Printed by Premier Print Group.

# Patterns

November 2024, Vol. L, No. 5



November is the month to express gratitude, so I want to take a moment to thank our hard-working TV and news production staff who are completing another episode of **State of Change** to air later this month. (See our cover story at right.) It continues to be an incredibly thought-provoking program focused on the impact of climate change right here in Illinois. I also want to thank the Backlund Charitable Trust for their continued support in ensuring our citizens can stay informed about their local environment.

I also am thankful for the unparalleled election coverage provided by PBS, NPR, and our IPM News team. As media platforms continue to be more and more splintered, it is essential to have trusted sources for news. I hope you will tune in for results and analysis on election night and the weeks following.

And last, but certainly not least, I'm thankful to all of you for helping us continue to bring our community this essential service. If you are able, I hope you will visit us at Campbell Hall on the University of Illinois campus for our annual Friendsgiving event coming up on Wednesday, Nov. 20. This year's theme will be the 50th anniversary of the Friends of WILL. It is always an inspiring event for me and staff members as we share our latest projects and get your feedback. I hope I can thank you in person later this month. But even if you can't make it, please know that your support is greatly appreciated!



Moss Bresnahan, Executive Director  
X (formerly Twitter): @MossILMedia



## ‘State of Change’ explores invasive species



Because of a combination of factors, including a warmer climate, invasive species are increasing in Illinois. This year, Illinois Public Media’s **State of Change** focuses on invasive species in Illinois, including aquatic creatures, birds, insects, and plants. Illinois scientists explain how they monitor and, in some cases, mitigate non-native species. Additionally, we are empowering viewers with how they can help limit the increase of these species.

The episode is the fourth edition of Illinois Public Media’s award-winning environmental series. The half-hour special airs at 7:30 pm

Thursday, Nov. 14, and on PBS stations across Illinois.

### State of Change

7:30 pm Thursday, Nov. 14

#### More about the series and archival episodes

[will.illinois.edu/  
stateofchange](http://will.illinois.edu/stateofchange)



**Past episodes also  
are available with  
the PBS App**



In the special, you will meet researchers who catch and categorize migrating birds that are killing native Illinois birds and eating crops. Wade with us into Illinois rivers to study the mussel species that appeared in 1988 in the U.S. and now has infiltrated Illinois waterways. Learn how invasive plant species got here, how to spot them, and why you’re encouraged to destroy them.

The show also covers the nine-banded armadillo.

This mammal

usually associated with the southern United States and central and south America, has expanded its territory into half of Illinois. We’ll show the extensive process researchers undertake to observe these mysterious animals.

Illinois Public Media’s Tinisha Spain is the host/reporter/producer. The stories were shot by DJ Roach, Sam Mirpoorian, and Jiyen “Jenny” Shi. IPM News and Public Affairs Director Reginald Hardwick is the executive producer.

Funds to produce **State of Change** are generously provided by the Backlund Charitable Trust.

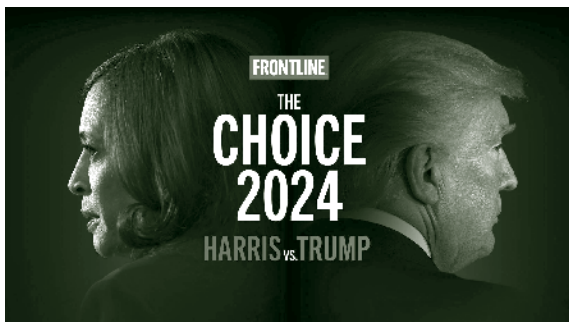


## WE ARE YOUR ELECTION HEADQUARTERS

### Before you vote, 'Frontline' specials provide perspective on the candidates

On the eve of Election Day, **Frontline** repeats its popular **The Choice** episodes that provide an up-close look at the candidates for president and vice president. In a historic election, those who know the candidates best reveal the influences and ideas they would bring to the White House.

The **Choice 2024: Harris vs. Trump** airs at 8 pm Monday, Nov. 4, with **The VP Choice: Vance vs. Walz** airing the same evening at 10 pm.



### Join us on Election Day for results, analysis

Tune to WILL-TV beginning at 5 pm on Election Day, Nov. 5, for live special coverage of the 2024 presidential and congressional elections. Co-anchored by Anna Nawaz and Geoff Bennett, coverage will include reporting from **PBS News**



**Hour** Capitol Hill; Trump campaign correspondent Lisa Desjardins; White House and Harris campaign correspondent Laura Barrón-López; with analysis from guests and results for the presidential, House of Representatives, and Senate elections.



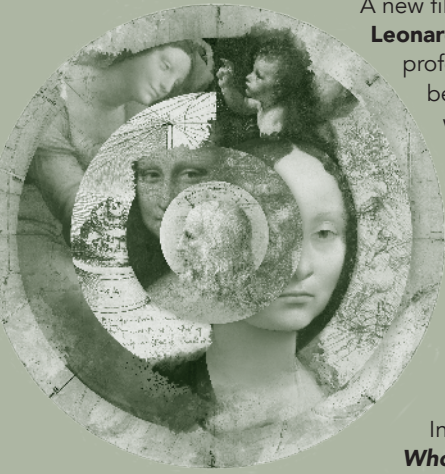
We will have hourly local updates on Election Day from 7-10 pm on WILL-AM 580, Classical FM 90.9, and Illinois Soul 101.1 FM during national NPR coverage. There will be results from the Associated Press with interactive graphics on [IPMnewsroom.org](http://IPMnewsroom.org). You also can look up results by county. And we will have IPM reporters and student reporters monitoring turnout and getting reaction to race results from around central Illinois.

## PRAIRIE & FIRE

**Prairie Fire**, WILL's monthly magazine show, features central Illinois stories at 7:30 pm Thursday, Nov. 21. Topics are subject to change.

This month, one of the segments of **Prairie Fire** takes you inside Fire Doll Studio, an independent woman-owned chandlery with a passion for health, sustainability, and the art of candle making. What started in a very small kitchen over a decade ago has turned into a bustling business in downtown Champaign. We'll introduce you to owner and artist Kayla Brown, and take you inside this beautiful shop. We even get our hands dirty and create a candle that captures the essence of **Prairie Fire**.

## Exploring the world of Leonardo da Vinci



A new film from executive producer Ken Burns tells the story of **Leonardo da Vinci**, a 15th-century Italian of soaring imagination and profound intellect. Da Vinci left behind artistic works of staggering beauty and detailed sketches of futuristic contraptions of warfare and flight that today are marveled at for their technical ingenuity and foresight. **Leonardo da Vinci** will bring da Vinci and his towering achievements to life through his personal notebooks, primary and secondary accounts of his life, and interviews with modern scholars, artists, engineers, inventors, and admirers. The film was directed and produced by Ken Burns, Sarah Burns, and David McMahon; and written by David McMahon and Sarah Burns. The four-hour film will air at 7 pm over two nights, Monday-Tuesday, Nov. 18-19 (repeated at 9 pm each night).

In addition, **Secrets of the Dead** features **Leonardo, The Man Who Saved Science** at 9 pm Wednesday Nov. 6. New evidence shows that many of his ideas were realized long before he sketched them out in his notebooks — some even 1,700 years before. Was Leonardo a copycat?

## This Native American is an Olympic medalist

The late Henry Boucha was a celebrated National Hockey League Player, a U.S. Olympic silver medalist, a United States Hockey Hall of Fame member, and a proud Ojibwa Native American. His story is one of struggle, tragedy, and triumph. **The Electric Indian** follows his journey from high school hockey standout to Olympic medalist and from professional stardom to crushing defeat. The film provides an in-depth look at his life and how he overcame the obstacles he faced on and off the ice. **The Electric Indian** airs at 3 pm Tuesday, Nov. 19.



## A portrait of Sir David Attenborough

**Nature** presents **Attenborough's Life Journey**, an intimate portrait of Sir David Attenborough's life and career in natural history. Airing at 7 pm Wednesday, Nov. 20, the special features the life of the 98-year-old British broadcaster, writer, and naturalist. From his boyhood days as a fossil hunter through his early days as a BBC host to his revered status as the foremost natural history presenter, **Nature** highlights Attenborough's grand career and his legacy of innovative educational television programs.



## WEEKDAYS

## 6 am

**NPR Morning Edition** with Leila Fadel, Steve Inskip, A Martínez, and Michel Martin

## 9 am

**Classic Mornings with Vic Di Geronimo**

Vic makes each morning a classic morning!

## Noon

**Anytime Classical with John Clare**

**NPR News Headlines** at 1:01, and 3:01.

## 1 pm

**Afternoon Classics**

## 5 pm

**NPR All Things Considered** with Ailsa Chang, Mary Louise Kelly, Ari Shapiro, and Juana Summers

## 6 pm

**The 21st Show** with Brian Mackey

## 7 pm Monday-Thursday

**The Evening Concert**

Monday-Friday at 7 pm and 6–9 pm Sundays.

Listings may change.

## Monday:

**The New York Philharmonic This Week**

- 11/4 Bach: Toccata and Fugue in D Minor  
Liszt: A Faust Symphony
- 11/11 Ravel: Mother Goose Suite  
Salonen: Violin Concerto  
Sibelius: Symphony No. 5
- 11/18 Milhaud: Suite française, Op. 248  
Stravinsky: Firebird Suite
- 11/25 Nielsen: Maskerade Overture  
Nielsen: Symphony No. 5  
Nielsen: Symphony No. 6, Sinfonia semplice

## Tuesday:

**Chicago Symphony Orchestra**

- 11/5 CSO pre-empted for election coverage  
See page 2.
- 11/12 Beethoven: Coriolan Overture  
Beethoven: Symphony No. 8 in F Major, Op. 93  
Beethoven: Symphony No. 5 in C Minor, Op. 67
- 11/19 Tzvi Avni: Prayer  
Mason Bates: Piano Concerto  
Tchaikovsky: Symphony No. 6 in B Minor
- 11/26 Bartók: Music for Strings, Percussion and Celesta  
Stravinsky: The Firebird

## Wednesday:

**WFMT Orchestra Series: European Broadcasting Union**

- 11/6 Nielsen: Violin Concerto, Op. 33  
Rachmaninoff: Symphony No. 2, Op. 27
- 11/13 J. Haydn: Te Deum No. 2, Hob. XXIIIC:2  
Schubert: Mass No. 2, D. 167  
Richard Strauss: Aus Italien, Op. 16
- 11/20 Antonín Dvořák: Slavonic Dances, Op. 72  
Leoš Janáček: Sinfonietta
- 11/27 Rachmaninoff: Piano Concerto No. 3  
Shostakovich: Symphony No. 10

## Thursday:

**The Sound of 13** with Loki Karuna

- 11/7 **Engaging the Canon**  
Traditional works from western Europe.
- 11/14 **Women of the Movement**  
A celebration of Black women in western classical music.
- 11/21 **The Movies**  
A look at Black achievement in film.
- 11/28 **Thanksgiving Special: Every Good Thing**  
Stories and music to celebrate Thanksgiving.

## 8 pm Thursday

**The Middle with Jeremy Hobson**

A nonpartisan live call-in talk show that focuses on elevating the voices of the people in the middle of the country.

## 7 pm Friday

**Early Music Now With Sara Schneider**

- 11/1 **For All the Saints**  
Settings of the motet Tu es Petrus in honor of St. Peter by Victoria and Palestrina.
- 11/8 **A 15th Century Influencer**  
Johannes Tinctoris (c.1430-1511), composer and music theorist.
- 11/15 **Sad pleasure and sorrowful joy**  
Explore how feelings have been expressed in music through the centuries.
- 11/22 **La Reverdie**  
The ensemble was founded in 1986 and has released more than 20 recordings.
- 11/29 **Feasting with a Renaissance Confraternity**  
Imagine a feast where the centerpiece isn't a turkey, but two swans!

## 8 pm Friday

**Atomic Age Cocktail Party** with Jason Croft

- 11/1 **Lucky Day**  
Songs about luck, chance, gambling, and other things left up to fate.
- 11/8 **Samba Rhumba Cha Cha Cha** (encore)  
Musical crazes of the Atomic Age.
- 11/15 **Gershwin**  
George and Ira a la hi-fi!
- 11/22 **Blue Plate Special** (encore)  
Songs about food!
- 11/29 **Shall We Dance?**  
We're headed to the dance floor for an hour of dancing tunes.

## 9 pm Friday

**Night Music** Andrea Blain, Scott Blankenship, and Steve Seel keep you company through the night and into the morning.

## SATURDAYS

## 7 am

**NPR Weekend Edition**

with Scott Simon

## 9 am

**Classics By Request**

Send requests to Vincent Trauth at [classreq@illinois.edu](mailto:classreq@illinois.edu) or leave a message at 217-265-5064.

## 11 am

**Classics of the Phonograph**

John Frayne's weekly exploration of memorable recordings from the 20th century.

- 11/2 **Conductor Thomas Beecham and Composer Frederick Delius**
- 11/9 **Pianist Van Cliburn's Victory in Moscow**
- 11/16 **Conductor Raphael Kubelik's Recordings with the Chicago Symphony Orchestra**
- 11/23 **Early Recordings by Leonard Bernstein**
- 11/30 **Duo of Pianist Martha Argerich and Violinist Gidon Kremer**

## Noon

**Afternoon at the Opera**

- 11/2 **La sonnambula** (Bellini). Daniel Oren, cond., with Dilbèr (Amina), Antonino Siragusa (Elvino), ZHANG Wenwei (Il Conte Rodolfo), and the National Centre for the Performing Arts, Beijing Orchestra and Chorus.

- 11/9 **LAN Huahua** (ZHANG Qianyi). ZHANG Guoyong, cond. With ZHAO Lili (LAN Huahua), GUAN Zhijing (Lord ZHOU), XUE Haoyin (Ganyang), and the National Centre for the Performing Arts opera house (Beijing, China) and the Qingdao Symphony Orchestra.
- 11/16 **Der fliegende Holländer "The Flying Dutchman"** (Wagner). Marcus Bosch, cond., with Olafur Sigurdarson (Dutchman), Diana Lamar (Senta), Dimitry Ulyanov (Daland), Tuomas Katajala (erik), and the National Centre for the Performing Arts opera house, Beijing Orchestra and Chorus.
- 11/23 **Un ballo in maschera** (Verdi). LLU Jia, cond., with Marius Manea (Gustav III), Karine Babajanyan (Amelia), Lado Ataneli (Renato), Gladys Rossi (Oscar), Bernadett Wiedemann (Ulrica), and the National Centre for the performing Arts Opera House, Beijing, Orchestra and chorus.
- 11/30 **Capriccio** (Richard Strauss). Christian Thielemann, cond., with Elsa Dreisig (The Countess), Bo Skovhus (The Count), Sebastian Kohlhepp (Flamand), Konstantin Krimmel (Olivier), Mika Kares (La Roche), and the Vienna Philharmonic at the Salzburg Festival.

**4 pm****NPR All Things Considered****5 pm**

**Performance Today Weekend** with Fred Childs Classical music in concert from American Public Media studios and sites across the nation and around the world, as well as classical music news, interviews, and features. **[Also Sundays at 2 pm]**

**7 pm**

**The Midnight Special** with Marilyn Rea Beyer A lively potpourri of folk, Celtic and bluegrass, show and novelty tunes, and hilarious comedy routines.

**9 pm**

**American Parlor Songbook** with JP Houston and Julie Van Dusen features clever songs, charming stories, and hilarious sketches.

**NPR News Headlines** at 9:01.

**10 pm**

**Jazz Night In America** with Christian McBride

**11 pm**

**Atomic Age Cocktail Party** with Jason Croft (See Friday at 8 pm.)

**midnight**

**Classics All Night**

**SUNDAYS****7 am**

**NPR Weekend Edition** with Ayesha Rascoe

**9 am**

**Sunday Baroque** Hosted by Suzanne Bona. **NPR News Headlines** at 9:01 and 10:01.

**1 pm**

**Feminine Fusion** Host Diane Jones highlights the influence of women in classical music.

**2 pm**

**Performance Today Weekend**

**4 pm**

**NPR All Things Considered**

**5 pm**

**Classical Music**

**6 pm**

**The Evening Concert**

**The Chamber Music Society of Lincoln Center**

- 11/3 Bach: Brandenburg Concerto No. 3 in G Major  
Beethoven: String Quartet No. 12 in E-flat Major
- 11/10 Schubert: Fantasie in F minor for Piano, Four Hands  
Schumann: Piano Quintet in E-flat Major
- 11/17 György Ligeti: Six Bagatelles for Flute, Oboe, Clarinet, Bassoon, and Horn  
Louis Spohr: Grand Nonetto in F major for Winds and Strings, Op. 31
- 11/24 William Bolcom: Three Rags for String Quartet  
Ned Rorem: Winter Pages for Clarinet, Bassoon, Violin, Cello, and Piano

**7 pm**

**Fiesta! with Elbio Barilari**

- 11/3 **Día de los Muertos (Day of the Dead)** Day of the Dead has inspired music in the Latin American culture throughout history.
- 11/10 **Padre Antonio Soler** Soler was a very prominent Spanish composer of the late Baroque and early Classical period.
- 11/17 **Music from Mexico and Argentina** Mexican living composers Eduardo Angulo, Leonardo Coral, and Arturo Rodriguez.
- 11/24 **Three Fantasies** Since the Renaissance, many composers have used the word "fantasy" as a title for pieces outside of the traditional musical forms.

**8 pm**

**The Evening Concert**

- Gateways Radio** with Loki Karuna
- 11/3 Valerie Coleman: Red Clay & Mississippi Delta  
Brahms: "Haydn" Variations  
Florence Price: Symphony No. 3
- 11/10 R. Nathaniel Dett: Madrigal Divine  
Florence Price: Violin Concerto No. 2  
James Cockerham: Fantasia on Lift Every Voice and Sing
- 11/17 Gabriela Lena Frank: Coqueteos  
Gernot Wolfgang: Common Ground  
Scott Joplin: Cascades  
William Grant Still: Symphony No. 1
- 11/24 Buskaid: Sunrise  
Florence Price: Piano Sonata  
William Levi Dawson: Negro Folk Symphony

**9 pm**

**Jazz Night In America** with Christian McBride

**10 pm**

**Classical Music**

**11 pm**

**Harmonia** with Angela Mariani Baroque and early music. **NPR News Headlines** at 11:01

**overnight**

**Classical Music**

Illinois  
**ARTS**  
Council

Programs on WILL Radio are partially sponsored by a grant from the Illinois Arts Council, a state agency..



Share your love for Illinois Soul  
 You can email us [Illinois-Soul@illinois.edu](mailto:Illinois-Soul@illinois.edu)  
 or leave a voicemail at 217-244-1989

WILL-FM 101.1 and 90.9 FM HD2 · streaming at [illinoissoul.org](http://illinoissoul.org)

Monday - Friday		Saturday	Sunday
Jazz Network	5:00	Jazz Network	Jazz Network
NPR Morning Edition with Kimberly Schofield	6:00	R&B	NPR Weekend Edition
	7:00		
	8:00		
	9:00		
R&B Smooth Jazz Neo-Soul	10:00	Dialogue with Kennedy Vincent	The Cut (featuring gospel music)
	11:00		
	Noon		
	1:00	Classic R&B	
	2:00		R&B
	3:00		
	4:00		
		5:00	The Wind Down with Will Downing
1A	6:00	Cool Jazz Countdown	Roots of Smooth
It's Been a Minute (M) Dialogue (Tu) Reveal (W) Throughline (Th) Code Switch/Life Kit (F)	7:00	Catch the Flo	New Urban Jazz Lounge
	8:00		
Jazz Network	9:00	The Soul of Jazz	Pillow Talk
	10:00	Jazz After Hours	Jazz Network
	11 pm- 2 am		
	3-4 am		

[facebook.com/IllinoisSoul](https://facebook.com/IllinoisSoul)
[@illinoissoul](https://instagram.com/illinoissoul)
[@illinois\\_soul](https://twitter.com/illinois_soul)
 Jill Clements, Illinois Soul Manager

## TOP 5 R&B Artists

Tying in to our on-air series, we will feature the Top 5 R&B artists according to community members, staff members, and VIPs.



As director of the Arts Impact Initiative in the College of Fine and Applied Arts at the University of Illinois Urbana-Champaign, **Carolyn Randolph Kato** oversees applied research efforts that foster understanding of the roles of art and artists in community development. She also is an Illinois Soul Community Advisory member. Her top 5:

1. Anita Baker
2. Ledisi
3. KIRBY
4. Erykah Badu
5. Aretha Franklin



# IPM receives two INBA awards

The Illinois News Broadcasters Association has honored two Illinois Public Media programs with a 2024 Crystal Mic Award. The awards were presented Sept. 21 during the organization's fall convention in East Peoria.

■ An episode of **Dialogue**, our new community affairs program airing on Illinois Soul and hosted by Kennedy Vincent, was honored with second place in Podcasting (small market radio). The episode focused on the Congolese community in Champaign-Urbana.

"There are thousands of people in our region who have immigrated from the Democratic Republic of the Congo," said Reginald Hardwick, IPM news and public affairs director. "We don't often know about them because they're quietly operating businesses, churches, and enriching schools in Champaign-Urbana. And they speak French. Kennedy Vincent took time to produce a quality podcast that explores what brought them to the U.S. and how their lives have changed in central Illinois. She also was in the kitchen for preparation of a Congolese meal. This is exactly why we created the **Dialogue** show."

Listen: [go.illinois.edu/dialogue-DRC](http://go.illinois.edu/dialogue-DRC)



Kennedy Vincent hosts 'Dialogue.'

■ The INBA award for Investigative Reporting (small radio market) was awarded to a piece for IPM News by former intern Farrah Anderson about inconsistencies in following protocol during domestic violence cases by the Champaign Police. It's the same story that Anderson won an SPJ award for. She was a senior in the College of Media at the University of Illinois Urbana-Champaign when she produced the story in a partnership with the Invisible Institute. The story also was recognized with a regional award from the Society of Professional Journalists and Collaborative Effort from the Public Media Journalists Association. Anderson, who graduated in May with a bachelor's in journalism, is now a full-time reporter at WFYI in Indianapolis.

Listen: [go.illinois.edu/domviolence-reporting](http://go.illinois.edu/domviolence-reporting)



Farrah Anderson

# Clements, Hardwick honored by NAACP



Jill Clements, Illinois Soul manager, and Reginald Hardwick, IPM director of news and public affairs, were honored by the local NAACP.

Illinois Public Media's Jill Clements and Reginald Hardwick were honored on Sept. 28 during the NAACP's Champaign County branch's annual Freedom Fund celebration. Clements was honored with the Media Trailblazer Award for her contributions to launching Illinois Soul FM 101.1. Hardwick, also a driving force behind the launch of Illinois Soul, was honored with the Media Expansion Award.

Monday - Friday				Saturday		Sunday		
NPR Morning Edition with Kimberly Schofield				5:00	BBC World Service		BBC World Service	
				6:00	Commodity Week		Inside Europe	
				6:30	State Week in Review			
				7:00	NPR Weekend Edition		NPR Weekend Edition	
1A				9:00	The Splendid Table		It's Been A Minute	
				10:00	Wait Wait ... Don't Tell Me!			
The 21st Show with Brian Mackey				11:00	Statewide		Code Switch/Life Kit	
Here & Now with Jason Croft				Noon	This American Life		Wait Wait ... Don't Tell Me!	
				The Middle (F repeat)	1:00	The Moth Radio Hour		The Treatment
							State Week in Review	
The Closing Market Report				2:00	Radiolab		Reveal	
BBC Newshour		Commodity Week (F)		2:30				
Fresh Air				3:00	TED Radio Hour		On the Media	
All Things Considered with Jim Meadows				4:00	All Things Considered		All Things Considered	
				5:00	Hidden Brain		People's Pharmacy	
				6:00	Big Picture Science		Travel with Rick Steves	
The 21st Show (repeat)				7:00	Living on Earth		Throughline	
Fresh Air (M-Tu)	Dialogue (W)	The Middle (Th)	Science Friday (F)	8:00	Latino USA		Special Programming	
BBC World Service		Fresh Air (W-F repeat)		9:00	Alternative Radio		To the Best of Our Knowledge	
				10:00	Science Friday (repeat)			
		11:00	Left, Right, and Center		Le Show			
		12:00-5 am	BBC World Service		BBC World Service			

**Bold Listing** = National/International News

Lillie Duncanson, Director of Broadcast Operations



## AGRICULTURE

Todd Gleason, host, **Closing Market Report** and **Commodity Week**:

**Opening Market Report**: 8:55 am; **Market Update**: 10:58 am; **Midday Market Report**: 12:58; **Closing Market Report**: 2:06. **Fridays: Commodity Week**: 2:30; **Grain Market Summary**: 4:32.

To listen to archived Ag reports, sign up for the Illinois Public Media Ag e-newsletter, or download our agricultural podcasts. Visit [www.willag.org](http://www.willag.org).



## IPM NEWS • [IPMnewsroom.org](http://IPMnewsroom.org)

Reginald Hardwick, news and public affairs director, Illinois Public Media

The news from Illinois Public Media's award-winning staff of reporters, hosts, and producers can be heard during **Morning Edition**, **The 21st Show**, **Here & Now**, and **All Things Considered**:

Mae Antar, Anna Casey, Jason Croft, Christine Hatfield, Emily Hays, Kulsoom Khan, Linda Kenyon, Brian Mackey, Jim Meadows, Steve Morck, Stephanie Mosqueda, Anulika Ochuba, David Pierce, Kimberly Schofield, Tinisha Spain, Arjun Thakkar, Kennedy Vincent, and Jose Zepeda.

**WILL Call**: Wednesdays at 6:45 & 9:45 am and Thursdays at 5:44 pm on AM 580 and FM 90.9



## WEATHER

Monday-Friday

Weather forecasts from meteorologist Andrew Pritchard throughout the day.

Monday - Friday		Saturday	Sunday
Newsline	5:00	Mister Rogers' Neighborhood	Mister Rogers' Neighborhood
Classical Stretch (M,W,F) Sit and Be Fit (T, Th)	5:30	Arthur	Arthur
Wild Kratts	6:00	Wild Kratts	Wild Kratts
Alma's Way	6:30	Alma's Way	Alma's Way
Lyla in the Loop	7:00	Lyla in the Loop	Lyla in the Loop
Wild Kratts Carl the Collector (begins Th 11/14; see page 13)	7:30	Wild Kratts Carl the Collector (11/16)	Wild Kratts Carl the Collector (11/17)
Daniel Tiger's Neighborhood	8:00	Daniel Tiger's Neighborhood	Daniel Tiger's Neighborhood
Rosie's Rules	8:30	Rosie's Rules	Rosie's Rules
Sesame Street	9:00	Sesame Street	Sesame Street
Work It Out Wombats!	9:30	Work It Out Wombats!	Work It Out Wombats!
Donkey Hodie	10:00	MotorWeek	Consuelo Mack WealthTrack
Pinkalicious & Peterrific	10:30	Garden SMART	To the Contrary with Bonnie Erbe
Elinor Wonders Why	11:00	Mid American Gardener	11/3 Rick Steves' Europe 11/10 Market to Market 11/17 State of Change (page 1) 11/24 Prairie Fire (page 2)
Nature Cat	11:30	Sara's Weeknight Meals	Market to Market
Molly of Denali	Noon	America's Test Kitchen	<b>11/3</b> Noon Mr Bates vs The Post Office on MASTERPIECE (Parts 1-4 of 4)
Xavier Riddle and the Secret Museum	12:30	Cook's Country	4:00 The Real Story of Mr Bates vs The Post Office
Arthur	1:00	Christopher Kimball's Milk Street Television	5:00 PBS News Weekend 5:30 Curious Traveler 6:00 Sister Boniface Mysteries
Odd Squad	1:30	Milk Street's My Family Recipe	<b>11/10</b> Noon Atlantic Crossing on MASTERPIECE (Parts 1-4 of 8)
<b>M</b> Father Brown <b>Tu</b> Antiques Roadshow <b>W</b> Finding Your Roots <b>Th</b> Nature <b>F</b> NOVA	2:00	Life of Loi: Mediterranean Secrets	4:00 Tales from the Royal Bedchamber
	2:30	Patti's Mexican Table	5:00 PBS News Weekend 5:30 Curious Traveler 6:00 Sister Boniface Mysteries
<b>M</b> Agatha Christie's Poirot <b>Tu</b> Miscellaneous 11/19 The Electric Indian (see p. 3)	3:00	Lidia's Kitchen	<b>11/17</b> Noon Atlantic Crossing on MASTERPIECE (Parts 5-8 of 8)
<b>W</b> Native America <b>Th</b> 11/7 & 11/14 Wild Metropolis <b>F</b> Miscellaneous	3:30	Curious Traveler	4:00 JFK: The Making of a President 5:00 PBS News Weekend 5:30 Curious Traveler 6:00 Sister Boniface Mysteries
<b>M</b> The Marlow Murder Club on MASTERPIECE 11/25 Inside the Court of Henry VIII	4:00	This Old House	<b>11/24</b> Noon Leonardo Da Vinci (Parts 1 & 2 of 2)
<b>Tu</b> Miscellaneous <b>W</b> Native America <b>Th</b> Miscellaneous <b>F</b> Secrets of the Dead	4:30	Ask This Old House	5:00 PBS News Weekend 5:30 Curious Traveler 6:00 Sister Boniface Mysteries
DW News	5:00	PBS News Weekend	
BBC World News America	5:30	Antiques Roadshow	
PBS News Hour	6:00		
	6:30	As Time Goes By	

Lillie Duncanson, Director of Broadcast Operations



**WILL Kids 24/7 on 12.2**  
For the full WILL Kids 24/7 schedule,  
go to [www.illinois.edu/tv/schedule](http://www.illinois.edu/tv/schedule)



View the Create & World schedules  
at [will.illinois.edu/tv/schedule](http://will.illinois.edu/tv/schedule)

Note: We will have special programming throughout the day Thanksgiving weekend, Thursday-Saturday, Nov. 28-30, including a two-day 'All Creatures Great and Small' marathon. See page 16.



## A young mayor tries to combat gun violence

**POV** presents **The Body Politic**, a harbinger of hope in a country plagued by gun violence. In Baltimore, Brandon Scott is an idealistic young leader who grew up during Baltimore's most troubling years. Elected Mayor amid the George Floyd uprising, he introduces an ambitious plan for violence reduction and police reform that he promises will lower the city's murder rate. Pundits claim Brandon's political health and the city's health are tied to the number 348 — the total murders Baltimore had the previous year, more homicides than New York City, a city 15 times its size. After entering office and barely getting a chance to enact his first safety reforms, violence surges to new highs. **The Body Politic** airs on **POV** at 9 pm Monday, Nov. 25.

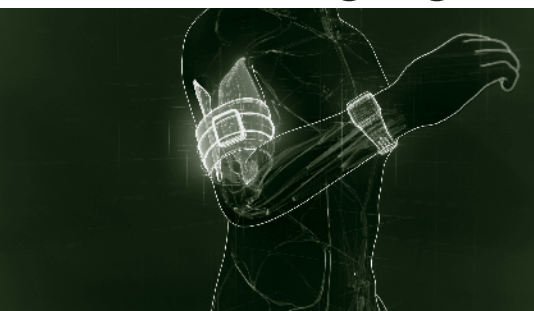
## 1898: A deadly race massacre and insurrection

**American Experience** tells the little-known story of a deadly race massacre and carefully orchestrated insurrection in North Carolina's largest city in 1898 — the only coup d'état in the history of the U.S. Stoking fears of "Negro Rule," self-described white supremacists used intimidation and violence to destroy Black political and economic power and overthrow Wilmington's democratically-elected, multi-racial government. The story of what happened in Wilmington was suppressed for decades. **American Experience** presents **American Coup: Wilmington 1898** at 8 pm Tuesday, Nov. 12.



A mob outside the burned offices of The Daily Record, November 1898.

## 'NOVA' highlights engineering feats



Around the world, engineers are finding ingenious ways to amplify our abilities and senses — allowing us to access and shape the world way beyond our natural abilities. From helping a blind man see without the use of his eyes to building a sling so powerful it can shoot rockets into space, see why engineering just might be the closest thing to a superpower we humans have. **NOVA: Building Stuff** airs in three parts Wednesdays at 8 pm beginning Nov. 13.

# The music of the legendary Patsy Cline

Country music legend Patsy Cline was a trailblazer in her genre, paving the way for artists who followed in her footsteps.

**Great Performances** presents **Patsy Cline: Walkin' After Midnight**, a star-studded concert filmed at the historic Ryman Auditorium, Patsy's home stage in Nashville. The special celebrates her life, legacy, and music featuring artists from numerous genres like country, pop, rock, gospel, bluegrass, and more. The program also features archival interviews and commentary from fellow artists and those who knew Patsy including her husband, Charlie Dick, and friends like Loretta Lynn, Dottie West, Roy Clark, and Owen Bradley. **Patsy Cline: Walkin' After Midnight** airs on **Great Performances** at 8 pm Friday, Nov. 22.



Beverly D'Angelo, Kristin Chenoweth, and Mickey Guyton celebrate Patsy Cline.

# The musical genius of Henry Mancini



Celebrate the centennial birthday of composer Henry Mancini with Michael Bublé (pictured), Cynthia Erivo, saxophonist Dave Koz, Monica Mancini, and host Jeff Goldblum. The special features Mancini's signature songs and clips from his beloved movies and TV shows. **Henry Mancini 100 at the Hollywood Bowl** airs on **Great Performances** at 8 pm Friday, Nov. 29.

## HONORING AND REMEMBERING OUR VETERANS

Join us for a musical salute to service, hosted by Jon Stewart and featuring the United States Army Field Band. This is a heartfelt Veterans Day celebration honoring heroes past and present, uniting us in gratitude as we reflect on their service, sacrifice, and the enduring spirit of America. **Salute to Service 2024: A Veterans Day Celebration** airs at 8 pm Friday, Nov. 8.

Riddled with survivor's guilt after his unit lost 17 men during "Operation Enduring Freedom" in Afghanistan, Marine veteran Anthony Marquez makes it his mission to reconnect with the Gold Star families of the fallen. By carving and hand-delivering a battlefield cross for each of the families affected by loss, Marquez finds the path to heal himself. **Independent Lens** documents Marquez's story in **Make Peace or Die: Honor the Fallen**, airing at 9 pm Monday, Nov. 11.



## 1 Friday

- 7:00 Washington Week with the Atlantic**
- 7:30 Firing Line with Margaret Hoover**
- 8:00 Great Performances (TV-14)**  
*Land of Gold.* Explore the making of John Adams and Peter Sellars' San Francisco Opera premiere of their latest collaboration, "Girls of the Golden West," which dramatizes the turbulent history of the California Gold Rush. Repeated 1 am 11/2 & 2:30 am 11/4.
- 9:30 Great Performances (TV-G)**  
*San Francisco Symphony Reopening Night.* Celebrate opening night of San Francisco Symphony's 110th season as it welcomes its new Grammy-winning music director Esa-Pekka Salonen with music by John Adams, Esperanza Spalding, and Wayne Shorter, and performances by Alonzo King LINES Ballet. Repeated 2:30 am 11/2.
- 11:00 Amanpour and Company**

## 2 Saturday

- 7:00 Father Brown (TV-PG)**  
*The Cat of Mastigatus.* Season 6, episode 8 of 10. Father Brown investigates a girl who is left for dead at a boys' school fete. Repeated 2 pm 11/4.
- 8:00 Midsomer Murders (TV-PG)**  
*Garden of Death, Parts 1 & 2 of 2.* Season 4, episode 1 & 2 of 10. A commercial decision to turn Midsomer Deverell's memorial garden into a tea shop proves to be a fatal mistake.
- 10:00 Agatha Christie's Poirot**  
*Problem at Sea.* Season 1, episode 7 of 10. An obnoxious passenger threatens Poirot's hopes of resting on a Mediterranean cruise. Repeated 3 pm 11/4.
- 11:00 Austin City Limits (TV-PG)**  
*Jelly Roll/The War and Treaty.*

## 3 Sunday

- 7:00 Ridley (TV-14) (DVS)**  
*The Memory Jar, Part 2 of 2.* Season 2, episode 8 of 8. Ridley intensifies his efforts to unravel what happened to the missing mother and wife. Repeated 3 am 11/5.
- 8:00 The Marlow Murder Club on MASTERPIECE (TV-14) (DVS)**  
 Season 1, episode 2 of 4. Despite Tanika's warnings to stay away from the case, Judith, Becks, and Suzie continue to investigate. Repeated 12 am 11/4, 4 pm 11/4 & 4 am 11/5.
- 9:00 Wolf Hall on MASTERPIECE (TV-PG)**  
 Season 1, episode 2 of 6. See page 20. Cardinal Wolsey has been forced to move to York. Cromwell remains in London, seeking to return the cardinal to the king's favor. Repeated 1 am 11/4.
- 10:03 Luna & Sophie (TV-14)**  
*Deadly Formula.* Season 3, episode 6 of 13. There are many suspects when a nutrition researcher is found dead on the terrace of her villa. *German with English subtitles.*
- 11:00 Miss Friman's War (TV-PG)**  
 Season 1, episode 2 of 6. The city's grocery retailers are determined to stop Dagmar from opening her store. *Swedish with English subtitles.*

## 4 Monday

- 7:00 Antiques Roadshow (TV-G)**  
*Celebrating Native American Heritage.*
- 8:00 Frontline**  
*The Choice 2024: Harris vs. Trump.* See page 2. Repeated 1 am 11/5.
- 10:00 Frontline (TV-PG)**  
*The VP Choice: Vance vs. Walz.* See page 2.
- 11:00 Amanpour and Company**

## 5 Tuesday

- 5:00 PBS News VOTE 2024: Election Coverage**  
 See page 2. Live special coverage of the 2024 presidential and congressional elections.
- 11:00 Amanpour and Company**

## 6 Wednesday

- 7:00 Nature (TV-14) (DVS)**  
*San Diego: America's Wildest City.* Discover the hidden wonders of the country's most biodiverse urban landscape, where humans and wildlife collide in spectacular fashion. This film showcases nature's resilience and beauty amid the urban sprawl. Repeated 2 pm 11/7 & 3 am 11/8.
- 8:00 NOVA (TV-PG) (DVS)**  
*Decoding The Universe: Quantum.* When we look at the world at the subatomic realm, we find the discoveries that have paved the way for current digital technologies and the powerful quantum sensors and computers of tomorrow. Repeated 4 am 11/8 & 2 pm 11/8.
- 9:00 Secrets of the Dead (TV-PG) (DVS)**  
*Leonardo, The Man Who Saved Science.* See page 3. Repeated 1 am 11/7, 2 am 11/8, 4 pm 11/8 & 1 am 11/10.
- 10:00 Secrets of the Dead (TV-PG)**  
*Hindenburg's Fatal Flaws.* A fresh look at the science and conditions surrounding the Hindenburg explosion reveals 10 flaws that directly led to the infamous disaster in 1937.
- 11:00 Amanpour and Company**

## 7 Thursday

- 7:00 Mid American Gardener**
- 7:30 Ask This Old House (TV-G)**  
*Wallpaper Installation, Sump Pump.*
- 8:00 Father Brown (TV-PG)**  
*The Flower of the Fairway.* Season 6, episode 9 of 10. Local feathers are ruffled when an ostentatious American opens up a golf club near Kembleford and a body is discovered in the reeds. Repeated 7 pm 11/9 & 2 pm 11/11.
- 9:00 Sister Boniface Mysteries (TV-PG)**  
*House of Misfit Dolls.* Season 3, episode 2 of 8. The team tries to uncover the death behind the stabbing of the owner of Salem's Dolls. Repeated 6 pm 11/10.
- 10:00 Death In Paradise (TV-PG)**  
 Season 13, episode 4 of 8. An electrocution at a substation causes an islandwide blackout and introduces the team to the baffling world of cryptocurrency.
- 11:00 Amanpour and Company**

## 8 Friday

- 7:00 Washington Week with the Atlantic**
- 7:30 Firing Line with Margaret Hoover**
- 8:00 Salute to Service 2024: A Veterans Day Celebration** (TV-PG)  
See page 11. *Repeated 1 am 11/9.*
- 9:00 The Eyes of the World: from D-Day to V-E Day** (TV-PG)  
Join historian John Monsky, conductor Keith Lockhart, and the Boston Pops for a Veterans Day tribute to remember. The show centers around first-hand accounts of four war correspondents. Their rare photographs and the stories they crafted bring history to life and illuminate the bravery and sacrifices of the men and women who served in World War II. *Repeated 2 am 11/9 & 2 am 11/10.*
- 11:00 Amanpour and Company**

## 9 Saturday

- 7:00 Father Brown** (TV-PG)  
*The Flower of the Fairway.* See 8 pm 11/7.
- 8:00 Midsomer Murders** (TV-PG)  
*Destroying Angel, Parts 1 & 2 of 2.* Season 4, episode 3 & 4 of 10. With the death of owner Karl Wainwright, the Easterly Grange Hotel falls into the hands of four beneficiaries.
- 10:00 Agatha Christie's Poirot**  
*The Incredible Theft.* Season 1, episode 8 of 10. *Repeated 3 pm 11/11.*
- 11:00 Austin City Limits** (TV-PG)  
*Chris Stapleton.*

## 10 Sunday

- 7:00 Nolly on MASTERPIECE** (TV-14) (DVS)  
Episode 1 of 3. At the height of her fame, British soap opera star Noele "Nolly" Gordon is suddenly fired from her hit series "Crossroads." *Repeated 2 am 11/12.*
- 8:00 The Marlow Murder Club on MASTERPIECE** (TV-14) (DVS)  
Season 1, episode 3 of 4. With the team in a race against time to stop the killer, Tanika decides to bring Judith, Becks, and Suzie into the police investigation. *Repeated 12 am 11/11, 4 pm 11/11 & 3 am 11/12.*
- 9:00 Wolf Hall on MASTERPIECE** (TV-PG)  
Season 1, episode 3 of 6. See page 20. With the cardinal dead, it falls to Cromwell to orchestrate a marriage between the king and Anne Boleyn. *Repeated 1 am 11/11.*
- 10:00 Luna & Sophie** (TV-14)  
*Death Flight.* Season 3, episode 7 of 13. An aircraft crashes at a small local airfield, and traces of sleeping pills are found in the dead pilot's blood. *German with English subtitles.*
- 11:00 Miss Friman's War** (TV-14)  
Season 1, episode 3 of 6. Dagmar grieves Ruben as she readies to open the shop; other grocers initiate a boycott. *Swedish with English subtitles.*



## New children's show celebrates our differences

**Carl the Collector** breaks new ground as PBS KIDS' first series centering on an autistic main character, as well as other central characters on the autism spectrum. The animated series for children ages 4-8 premieres Nov. 14 and will air daily at 7:30 am on WILL-TV. The series follows the everyday adventures of Carl, a warm-hearted raccoon who enjoys collecting things and loves his friends and family in Fuzzytown. His friends include Sheldon, an empathetic beaver with a knack for connecting people; Lotta, a quiet and self-assured fox; Nico and Arugula, identical twin bunny sisters whose personalities couldn't be more different; and Forrest, a hyperactive and impulsive squirrel with a tree nut allergy. Through its relatable stories, characters, and messages, **Carl the Collector** showcases and celebrates our differences and commonalities, and demonstrates that we all have something unique to offer.

## 11 Monday

- 7:00 Antiques Roadshow** (TV-G)  
*Extraordinary Finds 3.* Some remarkable finds whose stories didn't stop after the show.
- 8:00 Antiques Roadshow** (TV-G)  
*Somethings Wild.* Uncover an animal attraction to this collection of critters and creatures.
- 9:00 Independent Lens** (TV-14) (DVS)  
*Make Peace or Die: Honor The Fallen.* See page 11. *Repeated 2 am 11/13.*
- 10:30 Shrapnel Down: My Korean War Story**  
Korean War veteran Bill Rector, who served as a Gunner's Mate on the USS Los Angeles, tells his story using war footage he recorded.
- 11:00 Amanpour and Company**

## 12 Tuesday

- 7:00 Finding Your Roots (TV-PG)**  
*Write My Name in the Book of Life.* Henry Louis Gates Jr. helps musician Pharrell Williams and filmmaker Kasi Lemmons uncover rare first-person accounts of their enslaved ancestors. *Repeated 2 pm 11/13, 4 am 11/14 & 2:03 am 11/18.*
- 8:00 American Experience (TV-14) (DVS)**  
*American Coup: Wilmington 1898.* See page 10. *Repeated 2 am 11/14 & 2 am 11/17.*
- 10:00 JFK: The Making of a President (TV-PG)**  
 The life of John F. Kennedy is often defined by his death. His glamorous marriage and his meteoric rise to become a senator and then president captured the imagination of the public. But much of his personal life was hidden from the public. *Repeated 4 pm 11/17.*
- 11:00 Amanpour and Company**

## 13 Wednesday

- 7:00 Nature (TV-PG) (DVS)**  
*Lions of the Skeleton Coast.* In this captivating tale, a lion researcher follows three orphaned desert lion cubs as they try to survive in Namibia's brutal Skeleton Coast. *Repeated 2 pm 11/14 & 3 am 11/15.*
- 8:00 NOVA (TV-G) (DVS)**  
*Building Stuff: Boost It!* Part 1 of 3. See page 10. *Repeated 4 am 11/15 & 2 pm 11/15.*
- 9:00 Secrets of the Dead (TV-PG)**  
*Lost Treasures of Angkor — The Discovery.* Part 1 of 2. A recent discovery of gold and silver artifacts in Laos tells the story of the Khmer Empire. *Repeated 1 am 11/14, 2 am 11/15, 4 pm 11/15 & 1 am 11/17.*
- 10:00 Secrets of the Dead (TV-PG)**  
*A Samurai in the Vatican.* In 1613, a samurai feudal lord, Date Masamune, sent a Japanese Emissary to sail off to Europe to negotiate with the Pope and the King of Spain the opening of a new sea route.
- 11:00 Amanpour and Company**

## 14 Thursday

- 7:00 Mid American Gardener**
- 7:30 State of Change 2024 (TV-PG)**  
 See cover story on page 1. *Repeated 11 am 11/17.*
- 8:00 Father Brown (TV-PG)**  
*The Two Deaths of Hercule Flambeau.* Season 6, episode 10 of 10. Following reports of Flambeau's death, Father Brown races to protect a crown that contains a nail from the crucifixion of Christ. *Repeated 7 pm 11/16 & 2 pm 11/18.*
- 9:00 Sister Boniface Mysteries (TV-PG)**  
*Professor Y.* Season 3, episode 3 of 8. A fan convention for a classic sci-fi series sees the writer being taken hostage by one of the creations. *Repeated 6 pm 11/17.*
- 10:00 Death In Paradise (TV-PG)**  
 Season 13, episode 5 of 8. As Marlon faces a difficult decision about his future, he's also forced to confront his past when his old boss is murdered, and the only witness is his pet parrot.
- 11:00 Amanpour and Company**

## 15 Friday

- 7:00 Washington Week with the Atlantic**
- 7:30 Firing Line with Margaret Hoover**
- 8:00 Great Performances (TV-PG)**  
*Rodgers & Hammerstein's 80th Anniversary.* Explore the vast repertoire of these musical theater pioneers in a star-studded concert featuring Aaron Tveitt, Patrick Wilson, and more performing from shows like "Carousel," "South Pacific," "The King and I," "The Sound of Music," and more. *Repeated 1 am 11/16 & 3 am 11/18.*
- 10:00 Lang Lang — Favourite Melodies (TV-G)**  
 This special features world-famous pianist Lang Lang as he takes us on a personal journey through his favorite melodies, including works by Beethoven, Bach, and Brahms. Filmed in Paris, the Chinese pianist also incorporates beautiful movie soundtracks, captivating the listener's fantasy and awakening memories. *Repeated 3 am 11/16.*
- 11:00 Amanpour and Company**

## 16 Saturday

- 7:00 Father Brown (TV-PG)**  
*The Two Deaths of Hercule Flambeau.* See 8 pm 11/14.
- 8:00 Midsomer Murders (TV-PG)**  
*Electric Vendetta, Parts 1 & 2 of 2.* Season 4, episode 5 & 6 of 10. A series of murders unfolds in Midsomer Parva with the discovery of a naked body in the center of a mysterious crop circle in a field.
- 10:00 Agatha Christie's Poirot**  
*The King of Clubs.* Season 1, episode 9 of 10. Poirot uncovers deception at a film studio. *Repeated 3 pm 11/18.*
- 11:00 Austin City Limits (TV-PG)**  
*Juanes.*

## 17 Sunday

- 7:00 Nolly on MASTERPIECE (TV-14) (DVS)**  
 Episode 2 of 3. Nolly's last day on "Crossroads" is approaching, and she is desperate to know what will happen to her character. *Repeated 4 am 11/19.*
- 8:00 The Marlow Murder Club on MASTERPIECE (TV-14) (DVS)**  
 Season 1, episode 4 of 4. The women wonder if they've got what it takes to solve this case. *Repeated 12 am 11/18, 4 pm 11/18 & 3 am 11/19.*
- 9:00 Wolf Hall on MASTERPIECE (TV-PG)**  
 Season 1, episode 4 of 6. See page 20. Anne gives birth to a baby girl, failing to produce Henry's longed-for male heir. *Repeated 1 am 11/18.*
- 10:03 Luna & Sophie (TV-MA)**  
*A Mother's Love.* Season 3, episode 8 of 13. An ambitious mother is found dead at a climbing center and her body has been staged to make it look like an accident. *German with English subtitles.*
- 11:01 Miss Friman's War (TV-14)**  
 Season 1, episode 4 of 6. The women of Swedish Homes start to campaign for women's suffrage. *Swedish with English subtitles.*



# 'Father Brown' returns with season 11



Enjoy more captivating mysteries with the charming clergyman sleuth in season 11 of **Father Brown**, airing Thursdays at 8 pm beginning Nov. 21. Set in 1955 in a picturesque English countryside, Father Brown and his friends have plenty to investigate, including a food fayre to die for, a real life crime at a crime writing festival, and a village rivalry that turns deadly at the local Olympics. In addition, Father Brown and Sister Boniface become embroiled in a murder at an arts and crafts fair, and Father Brown's frenemy returns with a dangerous mission in mind.

## 18 Monday

- 7:00 Leonardo da Vinci** (TV-14) (DVS)  
*The Disciple of Experience.* Part 1 of 2. See page 3. Repeated 9 pm today, 1 am 11/19 & 12 pm 11/24.
- 9:00 Leonardo da Vinci** (TV-14) (DVS)  
See 7 pm.
- 11:00 Amanpour and Company**

## 19 Tuesday

- 7:00 Leonardo da Vinci** (TV-14) (DVS)  
*Painter-God.* Part 2 of 2. See page 3. Repeated at 9 pm today, 1 am 11/20 & 2:30 pm 11/24.
- 9:00 Leonardo da Vinci** (TV-14) (DVS)  
See 7 pm.
- 11:00 Amanpour and Company**

## 20 Wednesday

- 7:00 Nature** (TV-PG) (DVS)  
*Attenborough's Life Journey.* See page 3. Repeated 2 pm 11/21 & 3 am 11/22.
- 8:00 NOVA** (TV-PG) (DVS)  
*Building Stuff: Reach It!* Part 2 of 3. See page 10. Repeated 4 am 11/22 & 2 pm 11/22.
- 9:00 Secrets of the Dead** (TV-PG)  
*Lost Treasures of Angkor — King's Gold.* Part 2 of 2. The discovery of gold and silver artifacts leads to ancient sites of worship from the Khmer Empire. Repeated 1 am 11/21, 2 am 11/22, 4 pm 11/22 & 1 am 11/24.
- 10:00 Secrets of the Dead** (TV-14)  
*The Caravaggio Heist.* The director of museums in Malta risks his life to recover a masterpiece stolen from a cathedral in 1984.
- 11:00 Amanpour and Company**

## 21 Thursday

- 7:00 Mid American Gardener**
- 7:30 Prairie Fire**  
See page 2. Repeated 11 am 11/24.
- 8:00 Father Brown**  
*The Kembleston Olympics.* Season 11, episode 1 of 10. See article above. Repeated 7 pm 11/23 & 2 pm 11/25.
- 9:00 Sister Boniface Mysteries** (TV-PG)  
*A Fragrant Scandal.* Season 3, episode 4 of 8. The owner of a perfume company ends up dead. Repeated 6 pm 11/24.
- 10:00 Death In Paradise** (TV-PG)  
Season 13, episode 6 of 8. A tourist is stabbed in a hotel lift.
- 11:00 Amanpour and Company**

## 22 Friday

- 7:00 Washington Week with the Atlantic**
- 7:30 Firing Line with Margaret Hoover**
- 8:00 Great Performances** (TV-14)  
*Patsy Cline: Walkin' After Midnight.* See page 11. Repeated 1 am 11/23, 2 am 11/24 & 3 am 11/25.
- 10:00 Judy Collins: Wildflowers In Concert** (TV-G)  
Filmed before a live audience at Town Hall in New York City, this special features the legendary folk singer performing her groundbreaking 1967 album, "Wildflowers." Repeated 3 am 11/23 & 2 am 11/25.
- 11:00 Amanpour and Company**

## 23 Saturday

- 7:00 Father Brown**  
*The Kembleston Olympics.* See 8 pm 11/21.
- 8:00 Midsomer Murders** (TV-PG)  
*Who Killed Cock Robin? Parts 1 & 2 of 2.* Season 4, episode 7 & 8 of 10. After a horse whisperer disappears, Barnaby comes face to face with a long-standing adversary.
- 10:00 Agatha Christie's Poirot**  
*The Dream.* Season 1, episode 10 of 10. An industrialist consults Poirot about his suicidal dreams. Repeated 3 pm 11/25.
- 11:00 ACL Presents: 23rd Annual Americana Honors** (TV-PG)  
Austin City Limits presents performances from the 23rd Annual Americana Awards & Honors.

## 24 Sunday

- 7:00 Nolly on MASTERPIECE** (TV-14) (DVS)  
Episode 3 of 3. Nolly is now working in the cut-throat world of theatre.
- 8:00 Inside The Court of Henry VIII** (TV-PG) (DVS)  
A look beyond the facade of King Henry VIII's glamorous court to understand the danger and intrigue that routinely cost courtiers their heads. Repeated 12 am 11/25 & 4 pm 11/25.
- 9:00 Wolf Hall on MASTERPIECE** (TV-PG)  
Season 1, episode 5 of 6. See page 20. With Anne pregnant again, Henry begins to take notice of Jane Seymour. Repeated 1 am 11/25.
- 10:04 Luna & Sophie** (TV-14)  
*It's Your Fault.* Season 3, episode 9 of 13. A traffic warden is found dead. *German with English subtitles.*
- 11:01 Miss Friman's War** (TV-14)  
Season 1, episode 5 of 6. Johannesson is elected to parliament; Kinna and Tomasina's relationship is in danger. *Swedish with English subtitles.*

## 25 Monday

- 7:00 Antiques Roadshow** (TV-G)  
*Out of This World.* Explore the universe of space-themed treasures.
- 8:00 Antiques Roadshow** (TV-G)  
*The Gen X Years.* Explore the era between Boomers and Millennials for exciting treasures from the mid-1960s to early 1980s.
- 9:00 POV** (TV-14) (DVS)  
*The Body Politic.* See page 10. Repeated 3 am 11/26.
- 10:30 Run, Hide, Fight: Growing Up Under The Gun** (TV-14) (DVS)  
This documentary shows how gun violence affects young Americans. From PBS News Hour Student Reporting Labs in collaboration with 14 student journalists from five U.S. cities (Philadelphia, Oakland, Washington D.C., Nashville, and East Lansing) young people highlight how they're leading the fight for a safer future.
- 11:00 Amanpour and Company**

## 26 Tuesday

- 7:00 Finding Your Roots** (TV-PG)  
*Country Roots.* Henry Louis Gates Jr. uncovers the remarkably diverse backgrounds of country music icons Clint Black and Rosanne Cash. Repeated 1 am 11/27, 2 pm 11/27 & 4 am 11/28.
- 8:00 Lidia Celebrates America** (TV-PG)  
*Changemakers.* Follow Lidia on her 13th journey across America as she meets chefs, farmers, and entrepreneurs who are hard at work trying to change, not only what is available, but the way Americans see and think about food in the future. Repeated 2 am 11/27 & 1 am 11/29.
- 9:00 Frontline**  
*China, The U.S. and The Rise of Xi Jinping.* Correspondent Martin Smith traces the defining moments for the Chinese leader, how he's exercising power and the impact on China and relations with the U.S. and the world. Repeated 3 am 11/27.
- 11:00 Amanpour and Company**

## 27 Wednesday

- 7:00 Nature** (TV-G) (DVS)  
*Woodpeckers: The Hole Story.* With over 240 species of woodpeckers identified, explore their unique evolutionary journey and the powerful role they play in every ecosystem except Antarctica and Australia. Repeated 1 am 11/28 & 3 am 11/29.
- 8:00 NOVA** (TV-G) (DVS)  
*Building Stuff: Change It!* Part 3 of 3. See page 10.
- 9:00 Secrets of the Dead** (TV-14) (DVS)  
*Jamestown's Dark Winter.* Follow forensic anthropologists as they excavate the early American colony and uncover dark secrets. What really happened during the winter of 1609? Repeated 3 am 11/28 & 2 am 11/29.
- 10:00 Secrets of the Dead** (TV-PG)  
*The Woman in the Iron Coffin.* Follow a team of forensic experts as they investigate the preserved remains of a young African American woman from 19th-century New York.
- 11:00 Amanpour and Company**



## Join us Thanksgiving weekend

### 28 Thursday

- 6:30 am–6 pm** **All Creatures Great and Small on MASTERPIECE marathon**  
Season 1; and season 2, episodes 1 & 2 of 7.
- 6:00** **PBS News Hour**
- 7:00** **Mid American Gardener**
- 7:30 pm–12:30 am** **All Creatures Great and Small on MASTERPIECE continues**  
Season 2, episodes 3–6 of 7.

### 29 Friday

- 6 am–6 pm** **All Creatures Great and Small on MASTERPIECE continues**  
Season 2, episode 7 of 7; season 3, episodes 1–7 of 7; and *Tricki & Friends*.
- 6:00** **PBS News Hour**
- 7:00** **Washington Week with the Atlantic**
- 7:30** **Firing Line with Margaret Hoover**
- 8:00** **Great Performances** (TV-G)  
*Henry Mancini 100 at the Hollywood Bowl.* See page 11. Repeated 1 am 1/30.
- 10:00** **Peter Bence: Pianosphere in Paris**
- 11:30** **Amanpour and Company**

### 30 Saturday

- 11:30 am** **America's Test Kitchen Celebrates 25 Years**
- 1:00 pm** **Mary Berry's Highland Christmas**
- 2:30** **Rick Steves Tasty Europe**
- 3:00** **Rick Steves European Christmas**
- 5:30** **Mexico Made with Love**
- 7:00** **'60s and '70s Soul Celebration**
- 10:00** **Leonard Cohen — Live in Dublin**

For the full schedule, go to [will.iillinois.edu/tv/schedule](http://will.iillinois.edu/tv/schedule) or scan the QR Code.



# Find great music on WILL Passport

It's no secret that WILL Passport is a gateway to the very best of public television. But did you know it's also where you can find your favorite music legends? Friends of WILL have extensive access to a rich collection of performances featuring the most recognized names in music. Whether you're moved by timeless classical works or energized by the pulsating beats of today's pop hits, Passport has something for all music lovers. And the selection keeps growing.

Now in its 50th season, **Austin City Limits** continues to bring the biggest names in music to homes across the country. The PBS series showcases the most popular and innovative performers from every corner of the music scene. Members can stream all episodes from the show's previous three seasons, in addition to its current season and several specials. If you're ready to enjoy performances by some of the most talented musical artists of our time, look no further than Passport.



« COMING AND GOING THIS MONTH TO »

## WILL Passport



### NOVEMBER HIGHLIGHTS

**Call the Midwife Holiday Specials**, seasons 10–13

**All Heart**, season 3

**Broadway's Leading Men: A Musical Celebration**

**HAUSER — Classic Gala Concert Live at the Royal Albert Hall**

**Leonard Cohen — Live in Dublin**

**Mexico Made with Love**

**Peter Bence: Pianosphere in Paris**

**Run, Hide, Fight: Growing Up Under the Gun**

**Shamrock Tenors: Live from Belfast**

**The Who: The Kids are Alright**

**Walter Presents** (with English subtitles)

- Black Forest Crime, season 1 (German)
- Helsinki Crimes, season 1 (Finnish)
- Morten, season 1 (Dutch)
- Syndrome E, season 1 (French)

### LEAVING SOON

#### America ReFramed

- The Blessing

#### Austin City Limits

- Brittany Howard
- Jackson Browne
- Leon Bridges/Khruangbin

#### Independent Lens

- Belly of the Beast

#### NOVA

- Emperor's Ghost Army

#### POV

- Wisdom Gone Wild

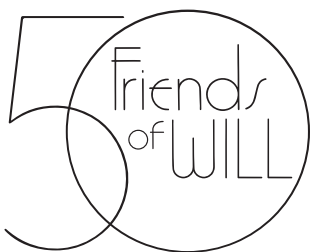
#### The Oratorio: A Documentary with Martin Scorsese

#### Secrets of the Dead

- A Samurai in the Vatican
- Hindenburg's Fatal Flaws
- Gangster's Gold
- The Caravaggio Heist
- The First Circle of Stonehenge

Go to [will.illinois.edu/passport](http://will.illinois.edu/passport), your TV's app menu, or your preferred streaming device, and find out how you can unlock more shows with your WILL Passport via the PBS App.





## Getting to know our Friends

*In honor of the 50th anniversary of the Friends of WILL, we will introduce a Friend in Patterns each month. Every person is different, and we want to know what they value about our stations and why they give. This month, we talked to Belinda De La Rosa, of Champaign.*

**Q. (When) and why did you first start donating to the Friends of WILL?**

A. I have contributed to PBS stations in every city I've lived in. I moved to Champaign-Urbana in 2006 and have contributed to WILL ever since. I love the programming and know that without commercial advertising it is difficult to pay for all the great shows I enjoy.

**Q. Why do you think it's important to give?**

A. It's important for the health of our community to maintain a news organization that is fact-based and unbiased. I trust the reporting on the **PBS News Hour**. When my sons were young, they learned a great deal from the children's programming. My personal favorite was **Sesame Street**. These shows are costly to create and need the support of those who benefit from them.

**Q. What are some of your favorite WILL, PBS, or NPR shows?**

A. The NPR shows I listen to regularly are **Wait, Wait ... Don't Tell Me!**, **Marketplace**, **Here &**



**Now**, and **Fresh Air** with Terry Gross. I like all the mysteries and detective shows on PBS. I also listen to Illinois Soul and watch **Prairie Fire** on WILL-TV. I am a lifelong learner. PBS, WILL, and NPR provide a wealth of informational programming.

**Q. How long have you been a Community Advisor and what motivated you to serve in this capacity?**

A. I have been a Community Advisor on and off for over 15 years. I feel it's important to give back to the community and help make it a better place. Illinois Public Media is a valuable and important resource for our region. I am proud and honored to be able to assist in its mission in any way.

As a Community Advisor, I sometimes assist with events at WILL. I enjoy being helpful and meeting new people. I met Nina Totenberg 10 years ago, and my (now deceased) husband just gushed over her! Good thing I'm not the jealous type.

## 'Rushmore' featured at Virginia Theatre

### Arthouse EXPERIENCE

The Arthouse Experience Film Series will present "Rushmore" (1998) at 7 pm Friday, Nov. 22 at the Virginia Theatre. Jason Schwartzman is a precocious and eccentric 15-year-old at Rushmore Academy, who falls for his teacher (Olivia Williams) and befriends a middle-aged industrialist

(Bill Murray). Later, he finds out that his love interest and his friend are having an affair, which prompts him to begin a vendetta.

Illinois Public Media sponsors the film series that includes limited-release, high-quality titles that have captured the imagination of movie lovers.

General admission tickets (\$7 per film) are available at the Virginia Theatre box office, online at [thevirginia.org](http://thevirginia.org), or charge by phone at 217-356-9063.

Bill Murray and Jason Schwartzman star in the 1998 movie 'Rushmore.'



# ‘Prairie Fire’ nominated for seven Mid-America regional Emmys

WILL-TV's **Prairie Fire** has been nominated for seven regional Emmy awards by the Mid-America chapter of the National Academy of Television Arts and Sciences. Illinois Public Media's popular magazine show, which first aired 1992-2009, was rebooted last year. We wanted to highlight the achievement of each nomination although by the time *Patterns* arrives in your mailbox or email in box, the winners will have been announced. Visit [will.illinois.edu](http://will.illinois.edu) for more.

- **Prairie Fire** was nominated in the *Best Magazine Program* category for its first season, which ran May 2023 through June 2024.

Other nominations:

- **“Preston Jackson”**  
*Arts/Entertainment, Short Form*  
A profile of renowned artist and musician Preston Jackson from Peoria, whose works document the Black experience.  
*Taylor Plantan, Isaac Musgrave*
- **“The Underground Railroad in Illinois”**  
*Informational/Instructional, Short Form*  
The role Illinois played in facilitating escapes through the Underground Railroad.  
*DJ Roach, Taylor Plantan*
- **“Charles Dickens Visits Illinois”**  
*Entertainment, Short or Long Form*  
Charles Dickens' not-so-flattering thoughts about Illinois and the Midwest prairie.  
*Sarah Edwards, Daniel Clarke, Taylor Plantan, and Alan Parker*
- **“Operation Wild Horse”**  
*Diversity-Equity Inclusion, Short Form*  
A visit to Operation Wild Horse, a nonprofit organization that partners wild mustangs and burros with U.S. military veterans.  
*Taylor Plantan, Isaac Musgrave*

## PRAIRIE FIRE

Watch **Prairie Fire** on WILL-TV every third Thursday of the month at 7:30 pm or on demand on YouTube, WILL Passport, or on our website at [will.illinois.edu/prairiefire](http://will.illinois.edu/prairiefire).

To specifically watch one of the segments that was nominated, scroll through *Prairie Fire* stories below the current episode featured on our website (above or scan the QR Code).



- **“Susannah Scaroni”**  
*Human Interest, Short Form*  
The remarkable journey of Paralympian Susannah Scaroni — from her days growing up to adapting to life in a wheelchair to the winner's circle of the 2023 Boston Marathon.  
*Sarah Edwards, Daniel Clarke*
- **“Prairie Fire” theme song**  
*Musical Composition-Arrangement*  
This original song was written by Grammy-nominated songwriters for the return of **Prairie Fire**. It was performed by Leah Marlene and recorded in Nashville.  
*Graham Edwards, John Pennell*

## IPM shows its Pride!

Illinois Public Media brought the power of public media to Pride Fest 2024, the second largest event in the state celebrating the LGBTQ+ experience. The weeklong festival offers organizations opportunities to demonstrate their commitment to serving the LGBTQ+ community. IPM was represented by staff members and their families in the festival's culminating events — a vibrant parade and bustling street fair in downtown Urbana.



“Having a strong and visible presence at Pride Fest demonstrates our commitment to serve central Illinois with equity and inclusion front of mind,” said Nicky Bennett, digital fundraising manager. “Part of the magic of public media is its ability to help listeners and viewers find a sense of belonging. Our participation in Pride Fest sends a powerful message to LGBTQ+ members of our community: There's a place for you in public television and radio.”

# ILLINOIS PUBLIC MEDIA Friendsgiving



In honor of the 25th anniversary of Campbell Hall, we repainted and spruced up the commemorative donor benches in Friends Plaza.

Join us as we celebrate the 50th anniversary of the Friends of WILL and open our doors for Illinois Public Media's annual Friendsgiving celebration on Wednesday, Nov. 20! Stop by Campbell Hall between 5 and 7 pm to learn about Illinois Public Media through a self-guided interactive tour. You'll get a behind-the-scenes look at what we do, meet many of our on-air hosts, and also pick up some vintage WILL swag! Light refreshments will be provided. We are located at 300 N. Goodwin Ave., Urbana. Parking is available in lots B-22 and B-17, north and east of our building. We hope to see you on Nov. 20!

## Exploring the music of 'Wolf Hall'

By Katie Buzard

**Wolf Hall on MASTERPIECE** returns to WILL-TV this fall, airing Sundays at 9 pm beginning Oct. 27 and streaming now on WILL Passport. Adapted from Hilary Mantel's historical novels, the award-winning six-part miniseries charts Thomas Cromwell's rise to political power within the court of King Henry VIII. From humble beginnings as the son of an abusive blacksmith, Cromwell (Mark Rylance) works his way up to the role of chief minister to Henry VIII (Damian Lewis) during the tumultuous Protestant Reformation.



Damian Lewis as King Henry VIII and Mark Rylance as Thomas Cromwell in 'Wolf Hall.'

Music plays an integral role in setting the mood of the show, be it through composer Debbie Wiseman's contemporary score featuring Tudor instruments or the integration of authentic music from the era played by the Musicians of Shakespeare's Globe, some of which was written by Henry VIII himself. While today Henry VIII is most remembered for his six wives and founding the Church of England, he was an accomplished musician and composer and prominent patron of the arts.

Let's examine Henry VIII's musical contributions and attempt to separate fact from fiction.

A love of music was a constant throughout Henry VIII's long and tumultuous reign (1509–1547), and his court flourished with cultural activity. Not only was music an essential part of daily life — accompanying meetings, processions, banquets, tournaments, and religious services — but employing the best musicians in the land demonstrated Henry VIII's wealth and power to his rivals, both foreign and domestic.

Henry VIII was a competent musician himself. He sang and played the lute, harpsichord, cornet, regal, flute, virginals, recorder, and organ. As a composer, his works are preserved in a volume known as the Henry VIII Manuscript. Compiled around 1518, the volume includes 109 secular songs and instrumental works by various English and continental European composers. Around a third of the pieces were allegedly penned by the king, including the song "Pastyme with Good Companye," which was hugely popular in its day.

Henry VIII's compositions — along with descriptions of his musical activities — help to paint a more nuanced picture of the complex figure, particularly during his younger, less despotic years. They also illustrate what courtly life was like and the musical tastes of the time. The historical importance of the author also helped preserve what little does survive, including the works of the other composers contained in the Henry VIII Manuscript, which otherwise might have been lost.

If you enjoy the series, there's good news. PBS and the BBC announced that **Wolf Hall: The Mirror and the Light**, based on the Mantel's final novel, is in production.

Read the full version of this story by visiting [will.illinois.edu/clefnotes](http://will.illinois.edu/clefnotes) or scan the QR Code.



## Thank you, Program Underwriters!

Private support accounts for the largest single source of funds necessary to make Illinois Public Media and the WILL stations great resources for communities across central Illinois.

7 Senses  
Abraham Lincoln National Heritage Area  
Abyss Wares  
Allerton Park and Retreat Center  
Amara Yoga & Arts  
Ameren Illinois  
Art Coop  
Art Mart  
Baldarotta Sandwiches & Gelateria  
Baroque Artists of Champaign-Urbana  
Beard Culture Barbershop & Gallery  
The BEAT  
Beckman Institute for Advanced Science and Technology  
Beringer Realty  
The Best of Africa Food Store  
Birch Tree Counseling  
Busey  
Campus Middle School for Girls  
Casablanca Bazar  
Center for Advanced Study  
Central State Marketing  
Champaign Center Partnership  
Champaign County Christian Health Center  
Champaign Danville Overhead Doors  
Champaign-Urbana Spinners and Weavers Guild  
Champaign-Urbana Symphony  
CHM Bible Theatre Productions  
Christie Clinic  
City of Urbana — Market @ The Square  
Cloud Mountain Kombucha  
Common Ground  
Community Foundation  
Community Shares of Illinois  
College of Applied Health and Sciences  
College of Fine & Applied Arts

C-U BIPOC Artist Collective  
C-U MTD  
Delta Dental  
Everyday Quilting  
Experience Champaign-Urbana  
Farm Credit  
Forage Kitchen  
Furniture Warehouse  
The Glenwood of Mahomet  
Health Alliance  
Health in Harmony Wellness Center  
Humanities Research Institute  
The Idea Store  
Illinois Arts Council  
Illinois Division of Rehabilitation Services  
Illinois Secretary of State  
Illinois State University  
Illinois Symphony Orchestra  
Innovation Arts and Entertainment  
Institute for Sustainability, Energy, and Environment  
International Galleries  
Jay Goldberg Events  
Juneteenth Inc. Springfield  
Krannert Art Museum  
Krannert Center for the Performing Arts  
Kreative Vision Photography  
The Land Connection  
Landscape Recycling Center  
Leek and Sons  
The Literary  
Mama's African Kitchen Restaurant  
MedServ Equipment Corp  
Midwest Renewable Energy Association  
NAACP of Champaign County  
Natural Gourmet  
New Prairie Solar  
Office of the Vice Chancellor for Diversity, Equity, and Inclusion

We appreciate the following organizations that have stepped forward to join the individuals and families who support award-winning public media services.

Office of the Vice Chancellor for Research and Innovation  
OSF Healthcare  
Osher Lifelong Learning Institute  
pmcarpenter.com  
Pour Bros. Craft Taproom Champaign  
The Prairie Enthusiasts  
Prairie Rivers Network  
PYGMALION  
Record Swap  
Rental City  
The Salt Shed  
Sinfonia da Camera  
Smith Photography  
State Farm Center  
Steve Litman Presents  
St. Joseph Apothecary  
Strictly Wicks Candle Company  
Sweeney Brothers Fine Flooring  
Symphony Orchestra Guild of Decatur  
Ten Thousand Villages  
Thomas-Mamer, LLP  
Town of Normal  
TrophyTime  
University of Illinois Physics  
University YMCA  
Urbana 116 Family Engagement Committee  
Urbana Acupuncture  
Urbana Arts & Culture Program  
Urbana Family Engagement  
Urbana Park District  
Urbana Parks Foundation  
Virginia Theatre  
Visit Pensacola  
WETA  
Winding Ivy Community Development Foundation  
World Harvest/Strawberry Fields  
Yoga Institute of Champaign-Urbana

36% of the PBS audience is more likely to research a company, product, or service that sponsors programs.

Join this illustrious group of business owners who benefit from reaching an influential audience by underwriting quality and award-winning programs such as:

**Finding Your Roots, Prairie Fire, and Mid-American Gardener**

Contact our development department at 217-300-3019 for details.

**Friends of will**

Campbell Hall  
300 North Goodwin Avenue  
Urbana, IL 61801-2316

# JOIN US!

## November Events at Krannert Center

**INCLUDING**

- NOV 9** Michael Feinstein in *Because of You: My Tribute to Tony Bennett*, featuring the Carnegie Hall Big Band
- NOV 10** Jaeden Izik-Djurko, piano
- NOV 16** Michael Cleveland & Flamekeeper

...and more!



VIEW COMPLETE SCHEDULE AND BUY TICKETS AT  
[KRANNERTCENTER.COM](http://KRANNERTCENTER.COM)

## **MOVING?** Let your public broadcasting membership move with you.

Fill out the form below and send it with your address to:

**Friends of WILL, 300 North Goodwin Avenue, Urbana, IL 61801-2316**

- Check here if you wish to remove your name from our membership list.
- Please update my membership with this new address:

Name: \_\_\_\_\_

Street: \_\_\_\_\_

City: \_\_\_\_\_ State: \_\_\_\_\_ Zip: \_\_\_\_\_

Phone: (    ) \_\_\_\_\_ Email: \_\_\_\_\_

Go to [will.illinois.edu/optout](http://will.illinois.edu/optout) to go green & receive Patterns digitally.

NONPROFIT  
ORGANIZATION  
U.S. POSTAGE PAID  
CHAMPAIGN, IL  
PERMIT NO. 453