

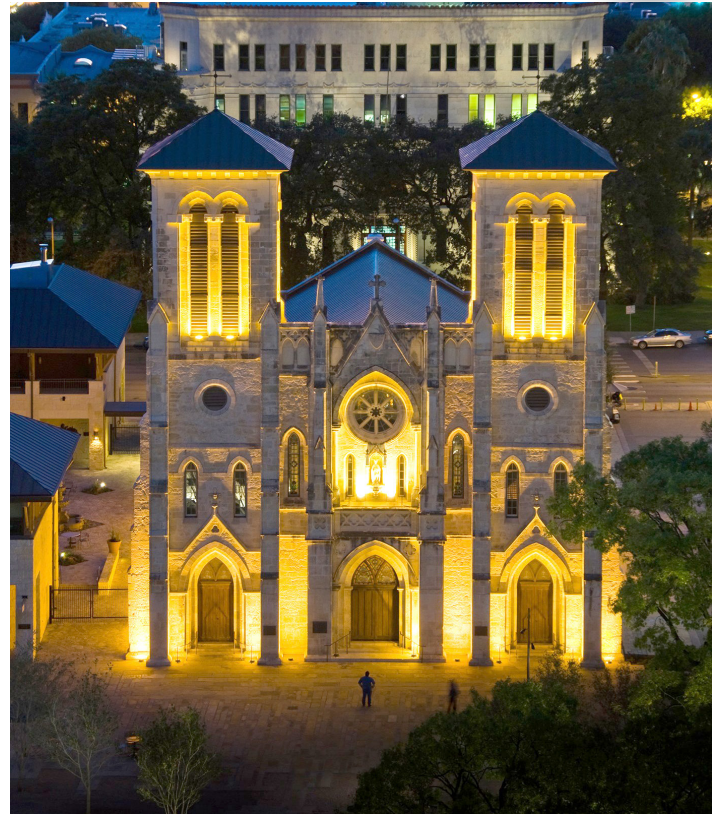
HISTORY TRAIN 2017

Featuring the Golden Age of Trains & the South

**Book now
to avoid a price
increase after
Dec. 31**



Our lounge car, Royal Street, is at the end of the train



San Fernando Cathedral of San Antonio

9 Days May 3-11, 2017 From \$4272*

- **Unique rail journey itinerary** • **Private restored train cars from 1950s** • **Fine dining** • **Premium beverages and snacks** • **Sleeping accommodations**
- **Chicago** • **St. Louis** • **San Antonio** • **Mission Concepcion** • **Menger Hotel lunch** • **The Alamo**

- **LBJ Ranch** • **“Nimitz Museum”** • **Cinco de Mayo**
- **Fredericksburg** • **Texas Transportation Rail Museum** • **New Orleans** • **National World War II Museum** • **Confederate Museum** • **Plantation Tour** • **Texas Eagle** • **Sunset Limited** • **City of New Orleans**

Mission Concepcion in San Antonio



Destrehan Plantation near New Orleans





San Antonio's Riverwalk



President General Antonio López de Santa Anna and his Mexican troops. We have a delicious buffet lunch at 1859's historic Menger Hotel, the oldest continuously operating hotel west of the Mississippi. Visit Mission Concepcion founded in 1716 authorized by the Spanish to serve as a buffer against the threat of French incursion from Louisiana. We make a fun stop at the SAS Shoe Factory before ending at the Market Square. You may wish to celebrate Cinco de Mayo here tonight or enjoy time on the River Walk. No dinner served on the train tonight. The evening is free. (B, L)

Day 4 Saturday: San Antonio-Fredericksburg

We drive out of the city to the LBJ ranch via Johnson City which was the boyhood home of President Lyndon B Johnson. The ranch has been restored as the Texas White House like it was in 1964. Then we continue on to German-founded Fredericksburg in wine country. History buffs will appreciate the National Pacific War Museum built to honor local son, Chester Nimitz, commander in chief of the US fleet who led the war against Japan. The outdoor Plaza of the Presidents is a tribute to the ten United States Presidents who served in World War II. Featured relics include an I.J.N. Ko-hyoteki class midget submarine that participated in the attack on Pearl Harbor, a Japanese "Rex" floatplane, and an American B-25 bomber. We return to San Antonio where drinks and dinner await us aboard our train. (B, D)



The Alamo

Day 5 Sunday: San Antonio-New Orleans

Depart at 6:20 A.M. Heading east to New Orleans on the **SUNSET LIMITED**, we have another relaxing day of scenery riding the rails with free-flowing adult beverages plus snacks and fine dining in our private rail cars. We are scheduled to

ALL ABOARD for our 6th private rail journey. Join our history-themed tour as we travel south to Texas and Louisiana. At historic sites we include guided sightseeing and museum visits. Travel with us this spring and celebrate the golden age of trains on private restored train cars from the 1950s.

Itinerary

Day 1 Wednesday: St. Louis-Overnight Train

Our private train cars are scheduled to depart Chicago at 1:45 P.M. attached to train 21, the **TEXAS EAGLE**, picking up in Illinois cities en route to St. Louis arriving at 8:00 P.M. Continue south through the night. (D)

Day 2 Thursday: En Route-San Antonio

Enjoy American vistas at "see level". Fine dining and premium beverages are included throughout the day as we glide south. Arrive in San Antonio at 9:55 P.M. Our private cars are detached from the train and parked in the station's yard where we stay for three nights. (B, L, D)

Day 3 Friday: San Antonio

This morning we visit the Texas Transportation Museum and ride on The Longhorn and Western Railroad. The museum's collection includes a 1926 business car built for the Atchison, Topeka and Santa Fe Railway's Division Superintendents. See also old autos, fire trucks and horse-drawn carriages.

We will hear about the six national flags that have flown over Texas and a highlight is a visit to the Alamo. Here the Texan defenders were wiped out but inspired revenge against

El Mercado in San Antonio





In Fredericksburg, Texas grandfather of US Fleet Admiral Chester Nimitz operated the Nimitz Steamboat Hotel which then became the National Museum of the Pacific War's original building (complex now spreads across six acres).

arrive New Orleans at 9:40 P.M. Our private cars are parked in the station where we stay for three nights. (B, L, D)

Day 6 Monday: New Orleans

This morning we visit the National WWII Museum including the 4D show, *Beyond All Boundaries*, taking us on a journey through the war that changed the world. This explosive show is narrated by executive producer, Tom Hanks. Originally opened in 2000 as the D-Day Museum, the focus has expanded across three buildings to feature wide range of campaigns in Europe and the Pacific using artifacts of the war and expansive presentations.

This afternoon you can see more of the museum or use the included streetcar pass to head to the French Quarter. We suggest treating yourself to a beignet at the world-famous Cafe du Monde, a must-do when in New Orleans! Dinner is included aboard the train. (B, D)

Day 7 Tuesday: New Orleans

Today we head to the countryside to tour the Destrehan Plantation built in 1790 patterned after the great sugar plantations' homes in the West Indies. After lunch we head back into the city for a guided visit to an ornate cemetery. Finally, we make a stop at the Civil War Museum at Confederate Hall. This evening is free giving you the opportunity to sample the varied cuisine and night life of New Orleans. (B, L)

Day 8 Wednesday: New Orleans-Chicago

Use your included streetcar pass for transportation from the train station to the French Quarter. Enjoy free time until 1:00 P.M. when you should return to the train station to reboard our train. Our 1:45 P.M. scheduled departure on the **CITY OF NEW ORLEANS** begins our journey north. (B, D)

You will have time to explore the French Quarter

Day 9 Thursday: Chicago-St. Louis

We are scheduled to arrive in Chicago at 9:00 A.M. Today we have an optional tour which includes admission to Chicago's impressive Museum of Science & Industry. Don't miss the huge "cross-country" train layout (and for an extra charge, the well-restored U-505 submarine exhibit). Downstate travelers have free time in the city until our 7:00 P.M. departure for central Illinois or St. Louis, wherever you began the trip. (B)



Jackson Square in New Orleans



Featured at the World War II Museum are Higgins boats, landing craft, that were vital to amphibious operations. They were designed, built, and tested in New Orleans.

What's Included: • Rail transportation • Admissions • Motor coach transportation • Sightseeing per itinerary • 3-day New Orleans streetcar pass • All drinks and snacks aboard the train • 18 Meals: 8 Breakfasts, 4 Lunches & 6 Dinners • Sleeper accommodations • Led by Joe Luka

Accommodations: (#) total number of nights
Private Train Car (8) Sleeping Berth, en route or in the station yard



Mariachi girl solos in San Antonio





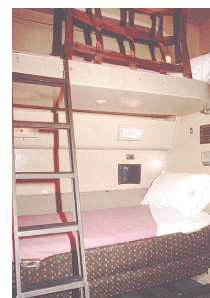
New Orleans' Cafe du Monde serves cafe du lait and beignets, a square piece of dough, fried and covered with powdered sugar.

What's Not Included: • Meals not noted in itinerary • Travel insurance
 • Rail staff gratuities \$135 • Discount for paying balance by check or cash \$50/person

*All prices are per person, based on occupancy, double: \$4272, single (roomette): \$4697, triple: \$6399, quad: \$4272. One suite in Hollywood Beach with private toilet and shower: double \$8500, triple \$5667, quad \$4250. • Document required is driver's license or other government-issued photo ID. • Insurance coverage is Deluxe Group Plan from Travel Guard (at a cost of 6.5%; for coverage details see www.tourgroupplanners.com/insurance.html) to cover cancellation charges if canceling for a covered reason; other terms at www.tourgroupplanners.com/terms.html incorporated by reference. • Price and trip components are subject to change. Departing from any station on the Chicago to St. Louis line. If fewer than 26 people book, a small group surcharge of \$150 will apply.

Acct#170503r 200CT16 14:29

Join us from: • Chicago • Bloomington/Normal
 • Lincoln • Springfield • Alton • St. Louis



Above left, interior of **Royal Street** (1950) lounge car owned by the Louisville & Nashville. Middle left: exterior of **Hollywood Beach** (1956) Bar/Lounge/Sleeper Car with Skylights. Upper right interior photo of **Pacific Union**, a 1950 Budd-built stainless steel classic sleeper that operated with the Union Pacific. *All pictures of accommodations on this page are of double bedrooms.*



Note on baggage: because of limited space in accommodations, we strongly request that each traveler limit their luggage to two carry-on bags, the larger with total dimensions (length + width + height) of 46" and the other 36". Dress for trip is casual.



Hollywood Beach is new to History Train; it has sleepers, lounge and skylights.

Tour Coordinator is Judy McElfresh, email: Judy@TourGroupPlanners.com; call 217 422-5002 to charge your credit card for the \$900 per person deposit including insurance. Or mail check (payable to **Rio Grande Travel**) to **Tour Group Planners**, 363 S Main St Ste 175, Decatur IL 62523

Private rail travel is a privilege Amtrak currently provides. This privilege can be removed at any time, discontinuing private rail journeys. Sign up today to join our rail trip next year, we will not know in advance when it will be our last.

Optional visit on Day 9 to Chicago's **Museum of Science & Industry** costs \$50 with admission and transportation.

 **TOUR GROUP PLANNERS**

A private rail car tour is like having your hotel on the rails ...a fine restaurant with a five star chef and an ever-changing view ...a swank night club to enjoy friendship & fellowship with other passengers and of course ...room to move around and your own personal window to view America as we traverse this great country of ours.

For a travel experience you will never forget, step away from the crowds at the airports... enjoy a little slower pace, travel at "see" level and witness America.



Tell your friends how to find this tour on the web: www.TourGroupPlanners.com

Details about our Vintage Train Cars

The **Pacific Union** is a 1950 Budd built stainless steel classic 10-6 sleeper that operated on Union Pacific's Chicago to the west coast "City" trains. Prior to entering into "private car" service in 1996, it underwent a heavy mechanical overhaul.

2 Pacific Union's 6 **double bedrooms** provide guests with a large sofa, table and a private annex (washroom with a toilet, sink and mirror) or a small sofa, comfortable lounge chair, comfortable sleeping accommodations with two beds, one upper and one lower.

Another feature is that all six of Pacific Union's bedrooms are ensuitable in which the room divider walls may be folded down to form one larger room (suite) accommodating up to four guests.

1 Pacific Union also features 10 roomettes. **Roomettes are smaller bedrooms for single occupancy.** Roomettes feature a small couch, overhead luggage rack, closet for hanging garments, fold down sink, illuminated oversize wall mirror, door mirror and in-room toilet. By night, this space-thrifty room converts into a bedroom with the bed folding out of the wall. A general bathroom is located across the hall from the shower. Stereo tape player provides the entertainment. Pacific Union is self-sufficient in every way.

Some additional functional modifications include:

- Electric baseboard heat throughout the car with individual thermostats for each room
- Air conditioning with individual room controls
- A newly constructed full-size stainless steel shower with changing area

Royal Street (pictures shown on the cover and previous page), 1950, rounded-end Sleeper/Lounge designed for great views from the end of the train.

Hollywood Beach (pictures shown on the previous page), 1956, is a streamlined Sleeper/Lounge Car with seating for 16 to 24 guests plus three double bedrooms and a suite. Only three Sun Lounges were built by Pullman-Standard for the Seaboard Air Line Railroad for service between New York City and Miami. Two remain today, under private ownership. The cars featured a distinctive glazed roof area meant to capture the ambience of a dome car in a lower profile, as tun-

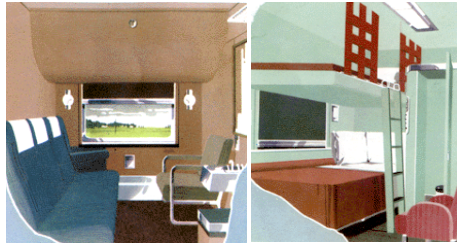
nels on the East Coast of the United States prevented the use of dome cars there. This will be the last car added to our train.



City of Angels (above) is the former New York Central's Laurel Stream with 6 double bedrooms, buffet and lounge built by Budd Co. in 1949.

Sleeping Accommodations

Double Bedroom



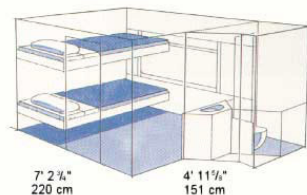
Two double bedrooms may be converted to a quad bedroom by removing the partition and used for a party of 3 or 4 people.

Double bedroom with upper and lower twin berths.

En-Suite bedroom with 2 lower twin berths is 2 double bedrooms with partition removed.

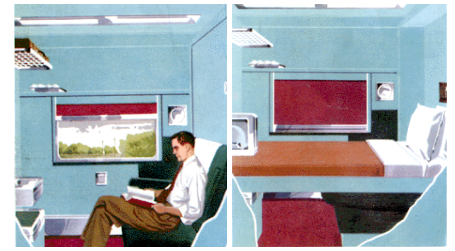
Triple bedrooms cost more because it is actually a Quad bedroom with an unused berth.

Quad bedroom is actually 2 Double bedrooms with the partition removed.



By night, the upper berth is lowered and the couch (or chairs, used by day) converts to a lower berth. Each bedroom has a small room for facilities (sink and toilet accessible day and night), facilities door opens into the bedroom. There is also a door on the bedroom.

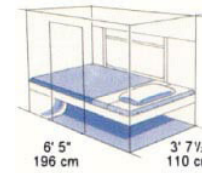
Roomette



In addition to the seat(s) or couch in your compartment, there is seating in the lounge car (which is at the back of the train).

Single roomette for one person is available.

Single occupancy of a double bedroom is at a higher cost.



By day, your roomette has a seat, toilet and sink. There is a door on the roomette. By night, the berth takes up the whole roomette. To use the toilet during the night, you must lift the berth or go down the hall (each car has a toilet).

Diagram and pictures are for a general indication. Accommodations vary in configuration. While completely refurbished and modern features added, a key goal of the restoration is to maintain the 1950s look and feel.

Unique tours since 1972

Located in the Professional Plaza at Decatur & South Main



Where travel dreams become reality.



Booking form: To reserve your place, please fill in & return to Tour Group Planners

WILL History Train May 3-11, 2017

Full Name as on ID (including Middle name/initial if any)

Nickname

Gender

Birthdate for Insurance

Exact Name as on ID Verified, for office use

1 _____

M

F

M

F

2 _____

Address _____

Insurance: Yes No

City St Zip _____

Phone _____

Cell _____

Balance of tour payment due January 3, 2017. Confirmation & statement will be sent after the receipt of this booking form. Name must match ID.

E-Mail optional _____

Credit Card # _____

Expires _____ / _____

Cash

Check: made out to *Rio Grande Travel*

Security Code _____

\$900/person deposit due, Payment enclosed \$ _____

I want to board the train at (circle): Chicago / Bloomington / Lincoln / Springfield / St. Louis or Other: _____

Occupancy 1 2 3 4 I want to share a room; with _____

Accommodation: (per person, pp) Double Bedroom for 2 or 4 persons \$4272 pp Roomette for 1 person \$4697

Book the following optional tour: Chicago tour, Museum of Science & Industry, \$50 pp

Food allergies/medical/meal requests _____

Emergency Contact _____ Relationship _____ Phone _____

Send to:

Thank you!

Tour Group Planners
363 S Main St Ste 175
Decatur IL 62523

For Office use:

Group # 170503r [] Sabre [] TT by Agt. _____

Travel Guard®

Deluxe Group Plan

Travel Insurance & Global Assistance

Cover your investment from these unforeseen circumstances.

Details at www.tourgroupplanners.com/insurance.html

SCHEDULE OF BENEFITS	
MAXIMUM LIMIT	COVERAGE PER PERSON
Trip Cost	Trip Cancellation
125% of Trip Cost	Trip Interruption
\$500	Trip Delay (Maximum \$150 per day)
\$500	Missed Connection
\$1,000	Baggage & Personal Effects

\$500	Baggage Delay
\$20,000	Accident Sickness Medical Expense*
\$50,000	Emergency Evacuation* and Repatriation of Remains
\$50,000	Accidental Death & Dismemberment
Included	Travel Medical Assistance
Included	Worldwide Travel Assistance
Included	LiveTravel® Emergency Assistance